



FOR SALE COMMERCIAL PROPERTY

OFFERED AT **\$ 80,000**

816 MAIN STREET, ALMA, NE 68920

PROPERTY TAXES - \$ 416.56



Harlan15



ROSS POYSER
FARM & RANCH SPECIALIST
REPUBLICAN CITY, NE
(308) 920-2235
ROSS.POYSER@AGWESTLAND.COM



PO BOX 1098, HOLDREGE, NE 68949



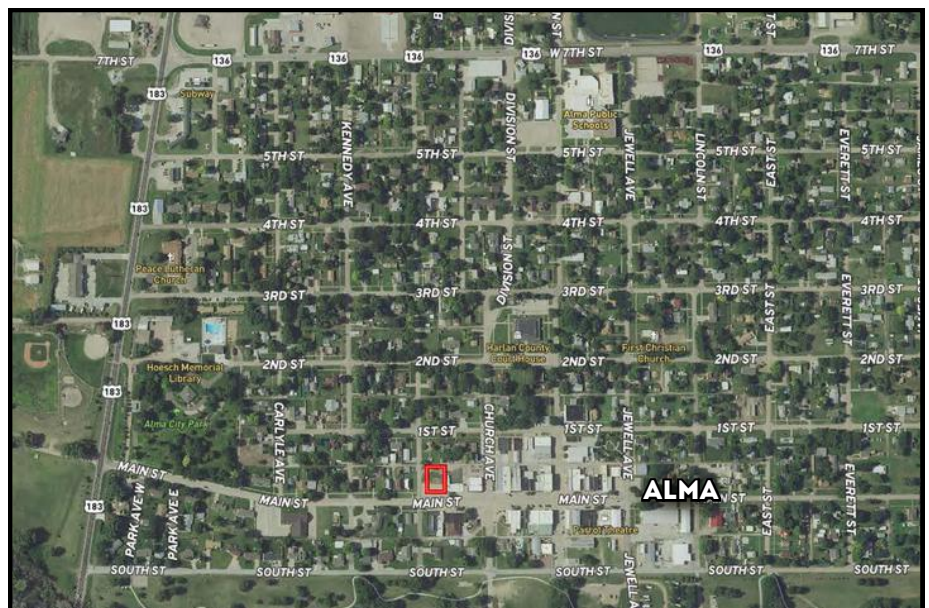
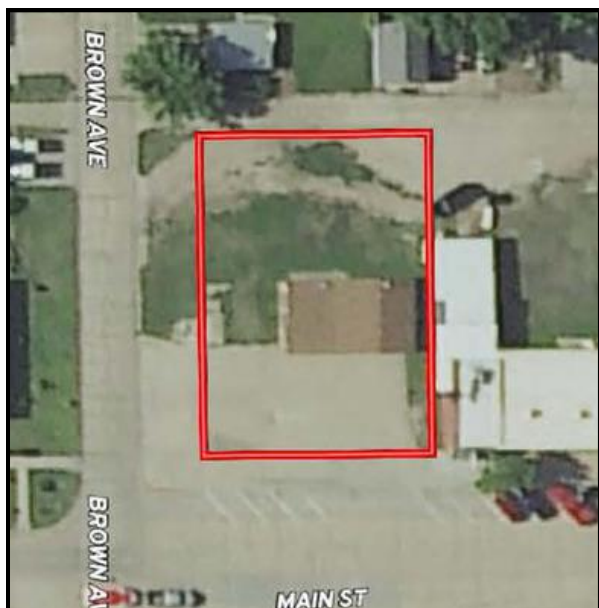
866-995-8067



AGWESTLAND.COM



Don't miss the chance to become the owner of a commercial property located on Main Street in downtown Alma, Nebraska. This property, spanning 0.27 acres across four commercially zoned lots, offers ample space for future expansion and development. The block-framed building, measuring 48'x28', provides generous storage capacity and includes two bays large enough to accommodate vehicles or boats. Additionally, the building features a newer sloped roof, 10'x10' large overhead doors, and 14' ceilings. For more details about this property, call Ross Poyser at (308) 920-2235.



The information contained herein is as obtained by AgWest Land Brokers LLC—Holdrege, NE from the owner and other sources. Even though this information is considered reliable, neither broker nor owner make any guarantee, warranty or representation as to the correctness of any data or descriptions. The accuracy of such statements should be determined through independent investigation made by the prospective purchaser. This offer for sale is subject to prior sale, errors and omissions, change of price, terms or other conditions or withdrawal from sale in whole or in part, by seller without notice and at the sole discretion of seller. Readers are urged to form their own independent conclusions and evaluations in consultation with legal counsel, accountants, and/or investment advisors concerning any and all material contained herein. Maps are for illustrative purposes only and are not intended to represent actual property lines.