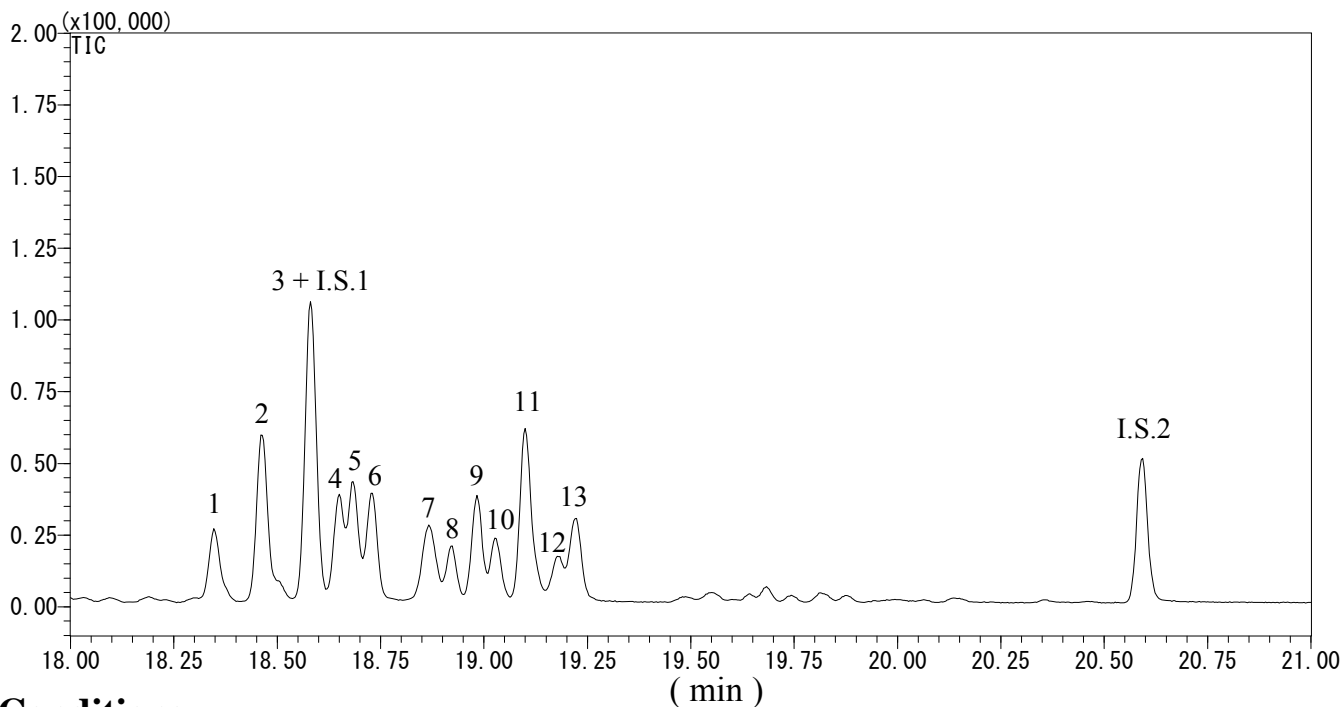


InertSearch™ for GC

InertCap® Applications

4-Nonylphenol

Data No. GA 241-0644



Conditions

System : GC-MS

Column : InertCap 5MS/NP
0.25 mm I.D. x 30 m df = 0.25 µm

Col. Cat. No. : 1010-18642

Col. Temp. : 50 °C(1 min hold) - 8 °C/min - 280 °C

Carrier Gas : He 36.3 cm/sec

Injection : Splitless 1min
250 °C

Detection : MS SIM
Interface Temp. 280 °C

Sample Size : 1 µg/mL (Isomer Mixture) in Dichloromethane
1 µL

Analyte :

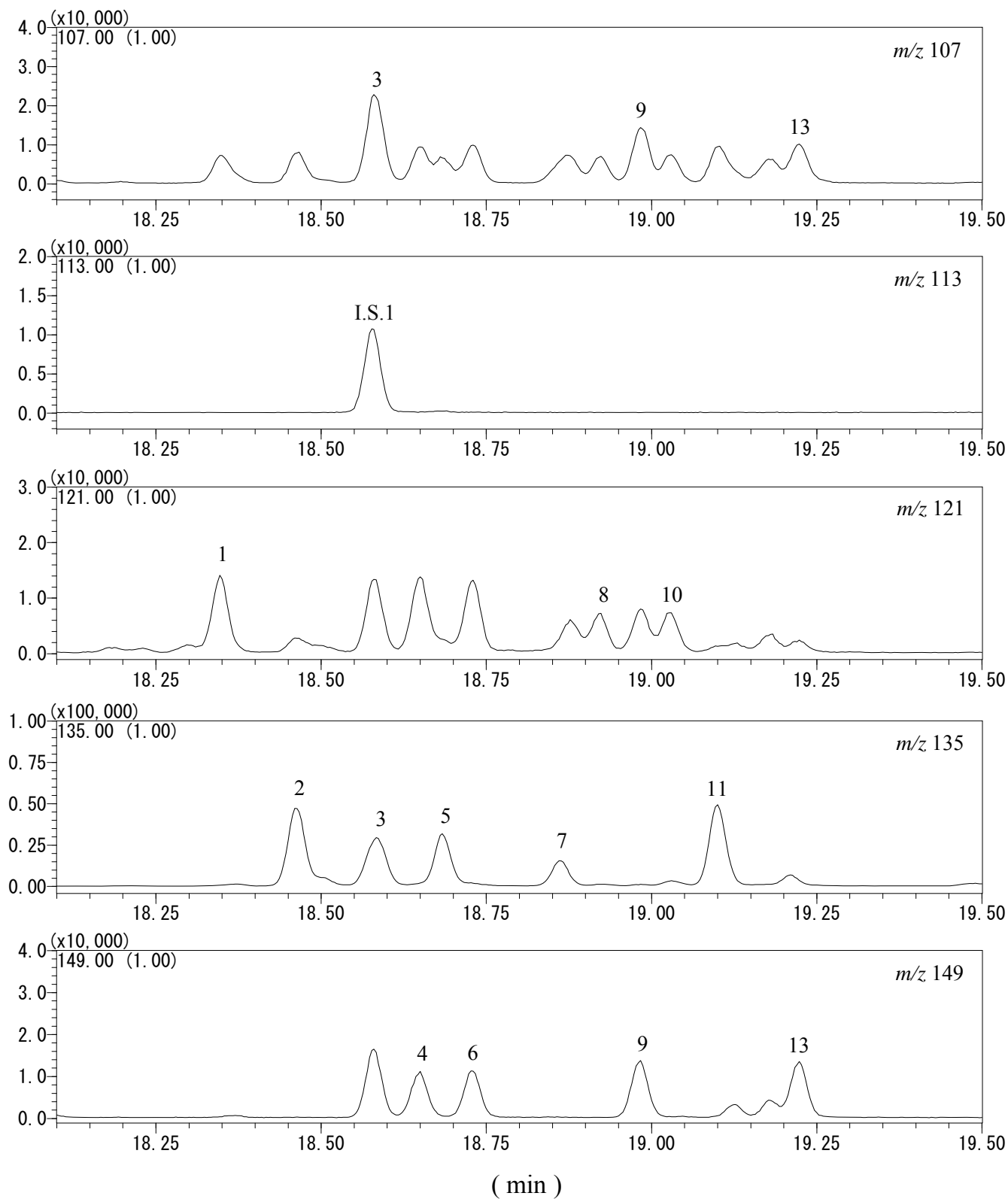
1. 4-(2,4-Dimethylheptan-4-yl)phenol	I.S.1. 4-(3,6-Dimethyl-3-heptyl)phenol
2. 4-(2,4-Dimethylheptan-2-yl)phenol	-ring- ¹³ C ₆ (0.1 µg/mL)
3. 4-(3,6-Dimethylheptan-3-yl)phenol	I.S.2. 4- <i>n</i> -Nonylphenol- <i>d</i> 4 (0.1 µg/mL)
4. 4-(3,5-Dimethylheptan-3-yl)phenol	
5. 4-(2,5-Dimethylheptan-2-yl)phenol	
6. 4-(3,5-Dimethylheptan-3-yl)phenol	
7. 4-(3-Ethyl-2-methylhexane-2-yl)phenol	
8. 4-(3,4-Dimethylheptan-4-yl)phenol	
9. 4-(3,4-Dimethylheptan-3-yl)phenol	
10. 4-(3,4-Dimethylheptan-4-yl)phenol	
11. 4-(2,3-Dimethylheptan-2-yl)phenol	
12. 4-(3-Methyloctan-3-yl)phenol	
13. 4-(3,4-Dimethylheptan-3-yl)phenol	

InertSearch™ for GC

InertCap® Applications

4-Nonylphenol

Data No. GA 216-0644



InertSearch™ for GC

InertCap® Applications

4-Nonylphenol

Data No. GA 216-0644

