

# Workplace storage equipment

**bott**

Product highlights



Efficient workspace





## Improve your efficiency - choose bott

Thank you for considering bott to deliver your workplace storage solution.

We're focussed on creating efficient, organised workspaces - for customers who want to improve and evolve and get the best out of their working environments. Our experience shows that investments in modern fit-for-purpose equipment, results in greater efficiencies, increased productivity and long-term operational success.

With a strong commitment to delivering excellent customer service, you can be confident that our products and services will support your ongoing business success.

Our offer goes beyond the simple supply of products - we regularly design, manufacture and install customised solutions. Our project design engineers can visit your site for a free design consultation and propose a solution based around your individual needs.

**Choose a workplace storage solution from bott and help drive efficiencies in your business.**



## A partner you can trust

With over 90 years of industry experience, the Bott Group are world-leading manufacturers and suppliers of efficient workspace solutions; with three manufacturing sites in Europe and a fully integrated global sales network.

In the UK, Bott Ltd. have been manufacturing high-quality workplace storage equipment for over 40 years.

Innovation is key to bott's success. We develop and create market led solutions, based on a real understanding of our customers' needs. We are agile and flexible and collaborate on a group level to develop new and relevant products.

As a trusted partner to many specialist brands from a wide range of industries, we are well prepared to assist you with your workplace storage requirements.

**Choose bott and benefit from a wealth of knowledge, skill and expertise.**



## Delivering value for customers

We are proud to be a British manufacturing success story. From our UK facility in Cornwall, we ensure that the technologies and processes we use, are focused on delivering the best value for our customers.

Through the application of LEAN manufacturing principles and investments into automated production; our state-of-the-art factory delivers consistent high-quality - from raw materials through to our finished products. Our flexible manufacturing capability and customer focused approach, enables us to offer both comprehensive ranges and bespoke requirements, with reliable delivery.

As a company, we take a proactive approach to reducing our environmental impact and are committed to protecting our natural resources. We've invested heavily in green technologies such as electric company vehicles, rainwater harvesting, energy efficiency, intelligent lighting and solar power.

**Choose bott for reliable quality and delivery.**



## Designed to perform, built to last

Choosing functional, sustainable products that stand the test of time, is now more important than ever. A long-term investment today, helps to prepare for the challenges of tomorrow.

At bott, we're in the business of producing high-quality storage solutions that deliver excellent customer value. Our in-house design, test and manufacturing processes, mean that we can be confident in the quality and longevity of our products.

To ensure your equipment is up to the job, our products have exceptionally high capacities including; 100% drawer extension, 200kg U.D.L capacity drawers and 1200kg U.D.L. rated benches.

Our 'Built to Last' approach guarantees that our workplace storage equipment will stand the test of time and match the exacting demands of your operations. Our UK manufactured products carry a 10-year extended guarantee and support is only a phone call away.

**Choose bott and you'll be investing in a high-quality, professional long-term solution.**



## Turning your ideas into reality

Our custom design and build service was developed to help customers choose the most beneficial solution, when creating their new working environments. Whether kitting out a new facility, or simply transforming an existing area, projects can be time-consuming, demanding and costly if things don't go to plan.

With many years of experience in a wide range of sectors, our project management team are specialists in the field. They can visit your site to gain an in-depth understanding of your operational needs, the size of your working area, budgetary considerations and timescales.

By working together, we can discuss the most suitable products, materials and configurations, then create detailed 3D visuals of your workspace proposal, ensuring it's perfect for you.

With a wide-ranging product offer and the flexibility that comes from having our own manufacturing plant, we can transform your ideas into reality.

**Choose bott and you'll receive a truly tailored solution.**



## Installations, scheduled to suit you

As an optional extra and to finish off the process, we can install your workplace storage equipment so that it's ready for use.

To keep disruption down to a minimum, our installations are scheduled to fit around you and your business, ensuring a swift and easy transfer into your new workspace.

Our highly trained engineers will meet the delivery, unwrap and assemble the equipment and efficiently install your system in accordance with site requirements. They will handle every part

of the build - leaving you with a fully functional working environment to be proud of.

You can be confident that from consultation and design, through to delivery and completed installation, we provide a reliable, professional, high-quality service.

**Choose bott for peace of mind.**

# cubio cabinets - overview



## Robust Housing

With reinforced steel housings, heavy-duty cubio cabinets offer a total capacity of up to 1.5 tonnes and are available in a wide range of plan sizes and height options.

## High-capacity Drawers

Standard duty fitment drawers have a 75kg U.D.L. capacity, with full 100% extension roller bearing slides and scuff resistant galvanised pans. Optional heavier-duty 200kg drawers are available. Small parts can be efficiently organised with trough blocks, storage boxes and adjustable metal dividers.

## Drawer Locking & Blocking

All cubio cabinets are centrally lockable, with integrated drawer blocking mechanism as standard.

## Practical Work Surfaces

40mm thick Multiplex or Lino worktops are available for all cubio cabinets. Raised edged top trays with quality inlaid mats are also an option, designed to prevent items from rolling off the work surface.

## Wide Range of Accessories

Optional fork lift bases help to make light work of moving heavy cabinets. Enclosed fixed height base kits, internal shelves and a variety of drawer storage solutions are also available.

Contact our sales team for more information about our wide range of accessories.



## cubio cabinets 650mm wide

## 800mm high



Depth [mm]	650
Version	standard duty
Quantity of drawers/doors	5
Front height [mm]	2x100, 2x150, 1x200
<b>Order ref.</b>	<b>40019035.**V</b>

## 900mm high



Depth [mm]	650	650
Version	standard duty	standard duty
Quantity of drawers/doors	6	7
Front height [mm]	3x100, 2x150, 1x200	5x100, 2x150
<b>Order ref.</b>	<b>40019049.**V</b>	<b>40019051.**V</b>

## 1000mm high



Depth [mm]	650
Version	standard duty
Quantity of drawers/doors	7
Front height [mm]	2x75, 2x100, 1x150, 2x200
<b>Order ref.</b>	<b>40019063.**V</b>

## Housing:

RAL 7035 – light grey

## Top, bottom and fronts:

RAL 7016 – anthracite grey

RAL 5010 – gentian blue

RAL 7035 – light grey

RAL 3004 – crimson red

## Housing:

RAL 7016 – anthracite grey

## Top, bottom and fronts:

RAL 7016 – anthracite grey

## cubio cabinets 800mm wide

## 900mm high



Depth [mm]	650	650
Version	standard duty	heavy duty
Quantity of drawers/doors	7	7
Front height [mm]	5x100, 2x150	5x100, 2x150
<b>Order ref.</b>	<b>40020041.**V</b>	<b>40020042.**V</b>

## 1000mm high



Depth [mm]	650	650
Version	standard duty	heavy duty
Quantity of drawers/doors	7	7
Front height [mm]	2x75, 2x100, 1x150, 2x200	2x75, 2x100, 1x150, 2x200
<b>Order ref.</b>	<b>40020053.**V</b>	<b>40020054.**V</b>

## 1200mm high



Depth [mm]	650	650
Version	standard duty	heavy duty
Quantity of drawers/doors	10	10
Front height [mm]	8x100, 2x150	8x100, 2x150
<b>Order ref.</b>	<b>40020065.**V</b>	<b>40020066.**V</b>

# cubio cabinets 800mm wide

1600mm high



Depth [mm]	650	650
Version	standard duty	heavy duty
Quantity of drawers/doors	11	11
Front height [mm]	4x100, 2x125, 3x150, 2x200	4x100, 2x125, 3x150, 2x200
Order ref.	<b>40020069.**V</b>	<b>40020070.**V</b>



## Housing:

RAL 7035 – light grey

## Top, bottom and fronts:

.19
.11
.16
.24

RAL 7016 – anthracite grey   RAL 5010 – gentian blue   RAL 7035 – light grey   RAL 3004 – crimson red

## Housing:

RAL 7016 – anthracite grey

## Top, bottom and fronts:

.77

RAL 7016 – anthracite grey

## cubio cabinets 1050mm wide

## 1000mm high



Depth [mm]	750	750	750	750
Version	standard duty	standard duty	heavy duty	heavy duty
Quantity of drawers/doors	7	8	7	8
Front height [mm]	2x75, 2x100, 1x150, 2x200	2x75, 3x100, 3x150	2x75, 2x100, 1x150, 2x200	2x75, 3x100, 3x150
Order ref.	<b>40029021.**V</b>	<b>40029025.**V</b>	<b>40029022.**V</b>	<b>40029026.**V</b>

## 1200mm high



Depth [mm]	750	750
Version	standard duty	heavy duty
Quantity of drawers/doors	8	8
Front height [mm]	2x75, 1x100, 3x150, 2x200	2x75, 1x100, 3x150, 2x200
Order ref.	<b>40029031.**V</b>	<b>40029032.**V</b>

## 1600mm high



Depth [mm]	750	750
Version	standard duty	heavy duty
Quantity of drawers/doors	9	9
Front height [mm]	2x100, 4x150, 2x200, 1x300	2x100, 4x150, 2x200, 1x300
Order ref.	<b>40029035.**V</b>	<b>40029036.**V</b>

**Housing:**

RAL 7035 – light grey

**Top, bottom and fronts:**

.19 RAL 7016 – anthracite grey  
 .11 RAL 5010 – gentian blue  
 .16 RAL 7035 – light grey  
 .24 RAL 3004 – crimson red

**Housing:**

RAL 7016 – anthracite grey

**Top, bottom and fronts:**

.77 RAL 7016 – anthracite grey

# cubio mobile cabinets - overview



## Robust Housing

With reinforced steel housings, cubio mobile cabinets offer an overall load capacity of up to 600kg and are available in a wide range of plan sizes and height options.

## Efficient Drawer Storage

Standard duty fitment drawers have a 50kg U.D.L. capacity with full 100% extension roller bearing slides and scuff resistant galvanised pans. Small parts can be efficiently organised with trough blocks, storage boxes and adjustable metal dividers.

## Drawer Locking & Blocking

Mobile cubio cabinets are centrally lockable, with integrated drawer blocking mechanism and safety trigger locking as standard. The trigger locking ensures that drawers remain closed in transit, even when unlocked.

## Practical Work Surfaces

Mobile cubio cabinets are fitted with either raised edged top trays with quality inlaid mats, designed to prevent items from rolling off the surface or tough, 20mm thick Multiplex or Lino worktops.

## Enhanced Mobility

High-quality castors and comfort grip handles are used throughout the range. Swivel and brake versions enhance mobility and stability.

Contact our sales team for more information about our wide range of accessories.

## cubio mobile cabinets

## 650mm wide



Depth [mm]	650	650
Height [mm]	785	985
Quantity of drawers/doors	4	6
Front height [mm]	3x100, 1x200	2x75, 2x100, 1x150, 1x200
Order ref.	<b>40402023.**V</b>	<b>40402035.**V</b>

## 800mm wide



Depth [mm]	650	650
Height [mm]	785	1085
Quantity of drawers/doors	5	6
Front height [mm]	2x75, 2x100, 1x150	3x100, 2x150, 1x200
Order ref.	<b>40402107.**V</b>	<b>40402063.**V</b>

## 1050mm wide



Depth [mm]	525
Height [mm]	885
Quantity of drawers/doors	4, 1 Door
Front height [mm]	1x100, 2x150, 1x200
Order ref.	<b>41006006.**V</b>

## Housing:

RAL 7035 – light grey

## Top, bottom and fronts:

RAL 7016 – anthracite grey

RAL 5010 – gentian blue

RAL 7035 – light grey

RAL 3004 – crimson red

## Housing:

RAL 7016 – anthracite grey

## Top, bottom and fronts:

RAL 7016 – anthracite grey

15

# cubio cupboards - overview



## Robust Housing

With reinforced steel housings, heavy-duty cubio cupboards offer up to 1.5 tonne total storage capacity and are available in a wide range of plan sizes and height options.

## Multiple Door Options

Choose from sliding, up/over roller shutter, window panel or reinforced panel lined doors.

## Galvanised Steel Shelves

Durable scuff resistant shelves in full and half-depth styles, with 100kg U.D.L capacity. 160kg U.D.L capacity shelves are standard in 1300mm wide cupboards.

## High-capacity Drawers

Standard duty fitment drawers offer 75kg U.D.L capacity, with full 100% extension roller bearing slides and scuff resistant galvanised pans. Optional heavier-duty 200kg drawers are available. Tough plastic troughs, boxes and adjustable metal dividers, provide multiple storage solutions.

## Fittings & Accessories

A wide range of internal fittings are available to kit out cubio cupboards; including perfo and louvre backpanels, hook, bin and divider kits, Multiplex worktops, sliding shelves, hanging rails and CNC storage systems. Optional fork lift bases make light work of moving heavy cupboards. Enclosed fixed height base kits are also available.

Contact our sales team for more information about our wide range of accessories.

# cubio shelf cupboards

## 525mm wide



Dimensions W x D x H [mm]	525 x 525 x 600	525 x 525 x 700	525 x 525 x 800	525 x 525 x 900	525 x 525 x 1000	525 x 525 x 1200
Quantity of doors	1	1	1	1	1	1
Version door	perfo	perfo	perfo	perfo	perfo	perfo
Quantity of shelves	1	1	2	2	2	3
Order ref.	40010095.**V	40010096.**V	40010097.**V	40010125.**V	40010098.**V	40010099.**V

## 800mm wide



Dimensions W x D x H [mm]	800 x 525 x 800	800 x 525 x 900	800 x 525 x 1000	800 x 525 x 1200	800 x 525 x 1600	800 x 525 x 2000
Quantity of doors	2	2	2	2	2	2
Version door	perfo	perfo	perfo	perfo	perfo	perfo
Quantity of shelves	2	2	2	3	3	4
Order ref.	40012077.**V	40012115.**V	40012078.**V	40012079.**V	40012081.**V	40012084.**V

## 1050mm wide



Dimensions W x D x H [mm]	1050 x 525 x 800	1050 x 525 x 900	1050 x 525 x 1000	1050 x 525 x 1200	1050 x 525 x 1600	1050 x 525 x 2000
Quantity of doors	2	2	2	2	2	2
Version door	perfo	perfo	perfo	perfo	perfo	perfo
Quantity of shelves	2	2	2	3	3	4
Order ref.	40013046.**V	40013077.**V	40013047.**V	40013048.**V	40013050.**V	40013053.**V

### Housing:

RAL 7035 – light grey

### Top, bottom and fronts:

.19
.11
.16
.24

RAL 7016 – anthracite grey RAL 5010 – gentian blue

RAL 7035 – light grey

RAL 3004 – crimson red

### Housing:

RAL 7016 – anthracite grey

### Top, bottom and fronts:

.77

RAL 7016 – anthracite grey

## cubio shelf cupboards

## 1300mm wide



Dimensions W x D x H [mm]	1300 x 525 x 800	1300 x 525 x 900	1300 x 525 x 1000	1300 x 525 x 1200	1300 x 525 x 1600	1300 x 525 x 2000
Quantity of doors	2	2	2	2	2	2
Version door	perfo	perfo	perfo	perfo	perfo	perfo
Quantity of shelves	2	2	2	3	3	4
<b>Order ref.</b>	<b>40014046.**V</b>	<b>40014066.**V</b>	<b>40014047.**V</b>	<b>40014048.**V</b>	<b>40014050.**V</b>	<b>40014053.**V</b>

## Cupboard shelves 525mm deep



- Two support brackets for mounting in 25 mm increments
- Load bearing capacity: 100 kg, from width 1300 mm 160 kg
- Surface: galvanised

For system width [mm]	525	800	1050	1300
<b>Order ref.</b>	<b>42101006.51V</b>	<b>42101014.51V</b>	<b>42101018.51V</b>	<b>42101022.51V</b>

## cubio shelf cupboards

### 650mm wide



Dimensions W x D x H [mm]	650 x 650 x 800	650 x 650 x 900	650 x 650 x 1000	650 x 650 x 1200	650 x 650 x 1600	650 x 650 x 2000
Quantity of doors	1	1	1	1	1	1
Version door	perfo	perfo	perfo	perfo	perfo	perfo
Quantity of shelves	2	2	2	3	3	4
<b>Order ref.</b>	<b>40019120.**V</b>	<b>40019163.**V</b>	<b>40019121.**V</b>	<b>40019122.**V</b>	<b>40019158.**V</b>	<b>40019125.**V</b>

### 800mm wide



Dimensions W x D x H [mm]	800 x 650 x 800	800 x 650 x 900	800 x 650 x 1000	800 x 650 x 1200	800 x 650 x 1600	800 x 650 x 2000
Quantity of doors	2	2	2	2	2	2
Version door	perfo	perfo	perfo	perfo	perfo	perfo
Quantity of shelves	2	2	2	3	3	4
<b>Order ref.</b>	<b>40020110.**V</b>	<b>40020144.**V</b>	<b>40020111.**V</b>	<b>40020112.**V</b>	<b>40020114.**V</b>	<b>40020117.**V</b>

### 1050mm wide



Dimensions W x D x H [mm]	1050 x 650 x 800	1050 x 650 x 900	1050 x 650 x 1000	1050 x 650 x 1200	1050 x 650 x 1600	1050 x 650 x 2000
Quantity of doors	2	2	2	2	2	2
Version door	perfo	perfo	perfo	perfo	perfo	perfo
Quantity of shelves	2	2	2	3	3	4
<b>Order ref.</b>	<b>40021094.**V</b>	<b>40021205.**V</b>	<b>40021095.**V</b>	<b>40021096.**V</b>	<b>40021098.**V</b>	<b>40021101.**V</b>

#### Housing:

RAL 7035 – light grey

#### Top, bottom and fronts:

.19
.11
.16
.24

RAL 7016 – anthracite grey RAL 5010 – gentian blue

RAL 7035 – light grey

RAL 3004 – crimson red

#### Housing:

RAL 7016 – anthracite grey

#### Top, bottom and fronts:

.77

RAL 7016 – anthracite grey

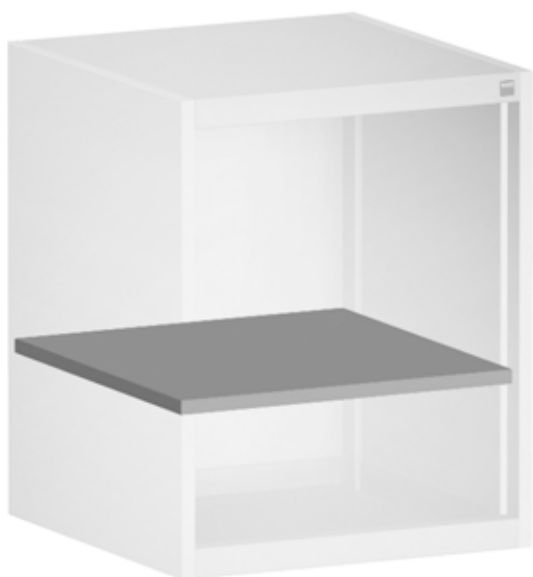
## cubio shelf cupboards

## 1300mm wide



Dimensions W x D x H [mm]	1300 x 650 x 800	1300 x 650 x 900	1300 x 650 x 1000	1300 x 650 x 1200	1300 x 650 x 1600	1300 x 650 x 2000
Quantity of doors	2	2	2	2	2	2
Version door	perfo	perfo	perfo	perfo	perfo	perfo
Quantity of shelves	2	2	2	3	3	4
Order ref.	40022046.**V	40022102.**V	40022047.**V	40022048.**V	40022050.**V	40022053.**V

## Cupboard shelves 650mm deep



- Two support brackets for mounting in 25 mm increments
- Load bearing capacity: 100 kg, from width 1300 mm 160 kg
- Surface: galvanised

For system width [mm]	650	800	1050	1300
Order ref.	42101011.51V	42101015.51V	42101019.51V	42101023.51V

# cubio kitted cupboards

## perfo doors, 3 drawers, 3 shelves



- 2 Hinged doors
- 3 Shelves
- 3 Internal drawers H 125mm

Dimensions W x D x H [mm]	1050 x 650 x 2000	1300 x 650 x 2000
Quantity of shelves	3	3
Version door	perfo	perfo
<b>Order ref.</b>	<b>40021109.**V</b>	<b>40022087.**V</b>

## perfo doors, 4 drawers, 2 shelves



- 2 Hinged doors
- 2 Shelves
- 4 Internal drawers H 125mm

Dimensions W x D x H [mm]	1050 x 650 x 2000	1300 x 650 x 2000
Quantity of shelves	2	2
Version door	perfo	perfo
<b>Order ref.</b>	<b>40021108.**V</b>	<b>40022088.**V</b>

### Housing:

RAL 7035 – light grey

### Top, bottom and fronts:

RAL 7016 – anthracite grey

RAL 5010 – gentian blue

RAL 7035 – light grey

RAL 3004 – crimson red

### Housing:

RAL 7016 – anthracite grey

### Top, bottom and fronts:

RAL 7016 – anthracite grey

21

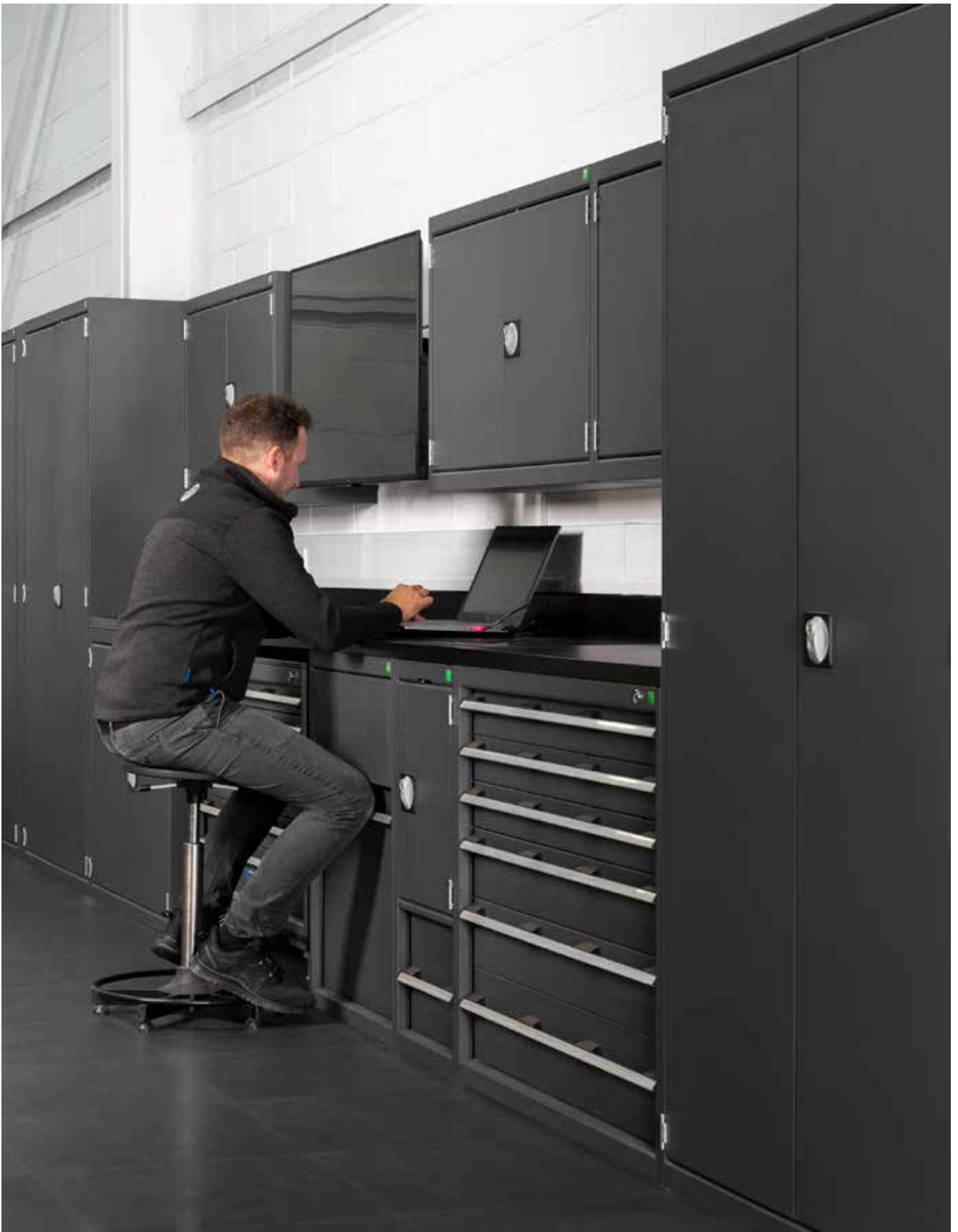
## cubio kitted cupboards

## perfo doors, 9 drawers, 3 shelves



- 2 Hinged doors
- 3 Shelves
- 9 Internal drawers H 125mm

Dimensions W x D x H [mm]	1050 x 650 x 2000	1300 x 650 x 2000
Quantity of shelves	3	3
Version door	perfo	perfo
<b>Order ref.</b>	<b>40021114.**V</b>	<b>40022089.**V</b>



**Housing:**

RAL 7035 – light grey

**Top, bottom and fronts:**

.19
.11
.16
.24

RAL 7016 – anthracite grey   RAL 5010 – gentian blue   RAL 7035 – light grey   RAL 3004 – crimson red

**Housing:**

RAL 7016 – anthracite grey

**Top, bottom and fronts:**

.77

RAL 7016 – anthracite grey

# cubio benches - overview



## Maximum Stability

With robust construction and up to 1200kg U.D.L total capacity, heavy-duty cubio benches are designed to perform and built to last.

## Durable Worktops

Hard-wearing 40mm worktops are used across the range. Choose from Multiplex or Beech, Stainless Steel or Steel Clad, Lino, Laminate or ESD Laminate. Custom corner joints, T-joints and special lengths, are available upon request.

## Ergonomic Working

Many cubio bench styles offer fixed or height adjustable options and mobile alternatives are available for framework, workstand and storage benches. Rear and overhead frame kits can be used to create efficient and ergonomic workstations; including, swivel arms, storage panels, adjustable shelves, service ducts and lighting.

## Wide Range of Accessories

Create custom configurations by combining cubio bench systems with our wide range of accessories; including, backpanels, base shelves, drawer cabinets and hook and bin kits.

Contact our sales team for more information about our wide range of accessories.

## cubio framework benches

## 1500mm wide x 840mm high



- Heavy duty, braced steel section construction
- Durable, 40mm thick worktop
- Durable powder coat finish
- Add bott cubio cabinets as required



Dimensions W x D [mm]	1500 x 750	1500 x 750	1500 x 900	1500 x 900
Stringers	Yes	Yes	Yes	Yes
Load capacity [kg]	800	450	800	450
Worktop	mpx	lino	mpx	lino
<b>Order ref.</b>	<b>41003082.16V</b>	<b>41003084.16V</b>	<b>41004001.16V</b>	<b>41004021.16V</b>

## 2000mm wide x 840mm high



- Heavy duty, braced steel section construction
- Durable, 40mm thick worktop
- Durable powder coat finish
- Add bott cubio cabinets as required



Dimensions W x D [mm]	2000 x 750	2000 x 750	2000 x 900	2000 x 900
Stringers	Yes	Yes	Yes	Yes
Load capacity [kg]	600	350	600	350
Worktop	mpx	lino	mpx	lino
<b>Order ref.</b>	<b>41003178.16V</b>	<b>41003180.16V</b>	<b>41004003.16V</b>	<b>41004023.16V</b>

## cubio framework benches

## 1500mm wide x 740 - 1140mm high



- Heavy duty, braced steel section construction
- Adjustable height
- Durable, 40mm thick worktop
- Durable powder coat finish
- Add bott cubio cabinets as required



Dimensions W x D [mm]	1500 x 750	1500 x 750	1500 x 900	1500 x 900
Adjustable height [mm]	740 - 1.140	740 - 1.140	740 - 1.140	740 - 1.140
Stringers	Yes	Yes	Yes	Yes
Load capacity [kg]	800	450	800	450
Worktop	mpx	lino	mpx	lino
<b>Order ref.</b>	<b>41003118.16V</b>	<b>41003120.16V</b>	<b>41004125.16V</b>	<b>41004126.16V</b>

## 2000mm wide x 740 - 1140mm high



- Heavy duty, braced steel section construction
- Adjustable height
- Durable, 40mm thick worktop
- Durable powder coat finish
- Add bott cubio cabinets as required



Dimensions W x D [mm]	2000 x 750	2000 x 750	2000 x 900	2000 x 900
Adjustable height [mm]	740 - 1.140	740 - 1.140	740 - 1.140	740 - 1.140
Stringers	Yes	Yes	Yes	Yes
Load capacity [kg]	600	350	600	350
Worktop	mpx	lino	mpx	lino
<b>Order ref.</b>	<b>41003214.16V</b>	<b>41003216.16V</b>	<b>41004127.16V</b>	<b>41004128.16V</b>

## cubio suspended cabinets

**650mm wide x 250mm high** (Note: use 650mm deep cabinets for 700mm deep benches, use 750mm deep cabinets for 900mm deep benches)


Depth [mm]	650	750
Version	standard duty	standard duty
Quantity of drawers/doors	1	1
Front height [mm]	1x150	1x150
Order ref.	<b>40019001.**V</b>	<b>40027092.**V</b>

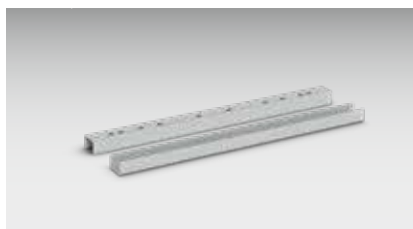
**650mm wide x 400mm high** (Note: use 650mm deep cabinets for 700mm deep benches, use 750mm deep cabinets for 900mm deep benches)


Depth [mm]	650	650	750	750
Version	standard duty	standard duty	standard duty	standard duty
Quantity of drawers/doors	2	3	2	3
Front height [mm]	2x150	3x100	2x150	3x100
Order ref.	<b>40019005.**V</b>	<b>40019009.**V</b>	<b>40027108.**V</b>	<b>40027096.**V</b>

**650mm wide x 600mm high** (Note: use 650mm deep cabinets for 700mm deep benches, use 750mm deep cabinets for 900mm deep benches)


Depth [mm]	650	650	650	750	750	750
Version	standard duty	standard duty		standard duty	standard duty	
Quantity of drawers/doors	4	5	1 Door	4	5	1 Door
Front height [mm]	2x75, 1x150, 1x200	2x75, 2x100, 1x150		2x75, 1x150, 1x200	2x75, 2x100, 1x150	
Order ref.	<b>40019015.**V</b>	<b>40019152.**V</b>	<b>40019118.**V</b>	<b>40027100.**V</b>	<b>40027102.**V</b>	<b>40027098.**V</b>

## Suspension channels



- Carrier rails required for each suspended cabinet fitted to a framework bench

Version	for 750mm deep benches	for 900mm deep benches
Dimensions W x D x H [mm]	45 x 640 x 29	45 x 790 x 29
Order ref.	<b>41010026.16V</b>	<b>41010093.16V</b>

## Housing:

RAL 7035 – light grey

## Top, bottom and fronts:

RAL 7016 – anthracite grey

RAL 5010 – gentian blue

RAL 7035 – light grey

RAL 3004 – crimson red

## Housing:

RAL 7016 – anthracite grey

## Top, bottom and fronts:

RAL 7016 – anthracite grey

27

## cubio storage benches

## 1500mm wide



- 2 Hinged doors, height 500 mm
- 2 Shelves

Dimensions W x D x H [mm]	1500 x 750 x 840	1500 x 750 x 840
Quantity of drawers/doors	2 Doors	2 Doors
Front height [mm]	2x500	2x500
Load capacity [kg]	800	450
Worktop	mpx	lino
<b>Order ref.</b>	<b>41002022.**V</b>	<b>41002024.**V</b>

## 1500mm wide



- 3 Drawers with standard duty slide (W 650 x D 650 mm)
- 1 Hinged door, height 500 mm
- 1 Shelf

Dimensions W x D x H [mm]	1500 x 750 x 840	1500 x 750 x 840
Quantity of drawers/doors	3, 1 Door	3, 1 Door
Front height [mm]	2x150, 1x200, 1x500	2x150, 1x200, 1x500
Load capacity [kg]	800	450
Worktop	mpx	lino
<b>Order ref.</b>	<b>41002025.**V</b>	<b>41002027.**V</b>

## cubio storage benches

## 2000mm wide



- 5 Drawers with standard duty slide (W 650 x D 650 mm)
- 2 Hinged doors, height 350 mm

Dimensions W x D x H [mm]	2000 x 750 x 840	2000 x 750 x 840
Quantity of drawers/doors	5, 2 Doors	5, 2 Doors
Front height [mm]	4x150, 1x200, 2x350	4x150, 1x200, 2x350
Load capacity [kg]	600	350
Worktop	mpx	lino
Order ref.	<b>41002064.**V</b>	<b>41002066.**V</b>

## 2000mm wide



- 3 Drawers with standard duty slide (W 650 x D 650 mm)
- 2 Hinged doors, height 500 mm
- 2 Shelves

Dimensions W x D x H [mm]	2000 x 750 x 840	2000 x 750 x 840
Quantity of drawers/doors	3, 2 Doors	3, 2 Doors
Front height [mm]	2x150, 1x200, 2x500	2x150, 1x200, 2x500
Load capacity [kg]	600	350
Worktop	mpx	lino
Order ref.	<b>41002055.**V</b>	<b>41002057.**V</b>

## Housing:

RAL 7035 – light grey

## Top, bottom and fronts:

RAL 7016 – anthracite grey

RAL 5010 – gentian blue

RAL 7035 – light grey

RAL 3004 – crimson red

## Housing:

RAL 7016 – anthracite grey

## Top, bottom and fronts:

RAL 7016 – anthracite grey

29

## cubio mobile storage benches

## 1500mm wide



- 6 Drawers with standard duty slide (W 650 x D 650 mm)
- 4 Swivel castors with brake

Dimensions W x D x H [mm]	1500 x 750 x 840	1500 x 750 x 840
Quantity of drawers/doors	6	6
Front height [mm]	4x150, 2x200	4x150, 2x200
Load capacity [kg]	300	300
Worktop	mpx	lino
<b>Order ref.</b>	<b>41002106.**V</b>	<b>41002108.**V</b>

## 1500mm wide



- 3 Drawers with standard duty slide (W 650 x D 650 mm)
- 1 Hinged door, height 500 mm
- 1 Shelf
- 4 Swivel castors with brake

Dimensions W x D x H [mm]	1500 x 750 x 840	1500 x 750 x 840
Quantity of drawers/doors	3, 1 Door	3, 1 Door
Front height [mm]	2x150, 1x200, 1x500	2x150, 1x200, 1x500
Load capacity [kg]	300	300
Worktop	mpx	lino
<b>Order ref.</b>	<b>41002100.**V</b>	<b>41002102.**V</b>

## cubio mobile storage benches

## 2000mm wide



- 5 Drawers with standard duty slide (W 650 x D 650 mm)
- 2 Hinged doors, height 350 mm
- 4 Swivel castors with brake

Dimensions W x D x H [mm]	2000 x 750 x 840	2000 x 750 x 840
Quantity of drawers/doors	5, 2 Doors	5, 2 Doors
Front height [mm]	4x150, 1x200, 2x350	4x150, 1x200, 2x350
Load capacity [kg]	300	300
Worktop	mpx	lino
Order ref.	<b>41002133.**V</b>	<b>41002135.**V</b>

## 2000mm wide



- 3 Drawers with standard duty slide (W 650 x D 650 mm)
- 2 Hinged doors, height 500 mm
- 2 Shelves
- 4 Swivel castors with brake

Dimensions W x D x H [mm]	2000 x 750 x 840	2000 x 750 x 840
Quantity of drawers/doors	3, 2 Doors	3, 2 Doors
Front height [mm]	2x150, 1x200, 2x500	2x150, 1x200, 2x500
Load capacity [kg]	300	300
Worktop	mpx	lino
Order ref.	<b>41002124.**V</b>	<b>41002126.**V</b>

## Housing:

RAL 7035 – light grey

## Top, bottom and fronts:

RAL 7016 – anthracite grey

RAL 5010 – gentian blue

RAL 7035 – light grey

RAL 3004 – crimson red

## Housing:

RAL 7016 – anthracite grey

## Top, bottom and fronts:

RAL 7016 – anthracite grey

31

# perfo - overview



## Flexible Storage

Steel panels are the heart of the perfo system, with wall mount, free-standing and mobile variations. Available in perfo, louvre or combi styles, the system is exceptionally versatile, with a diverse range of sizes and accessories.

## Reinforced Panels

Perfo, combi and all horizontal louvre panels, feature return edges and reinforcing strips, providing high strength and great rigidity.

## Range Integration

The perfo system is designed to integrate with storage cupboards, wall cupboards and benches, from both the cubio and verso ranges.

## Perfo Accessories

For quick access to tools and equipment, a variety of steel hooks, clips and holders are available to suit almost every requirement. Pre-selected kits make easy work of ordering.

## Louvre Accessories

Louvre panels work with plastic bins to create high-capacity component storage. Bins are available in many sizes, colours and pack quantities.

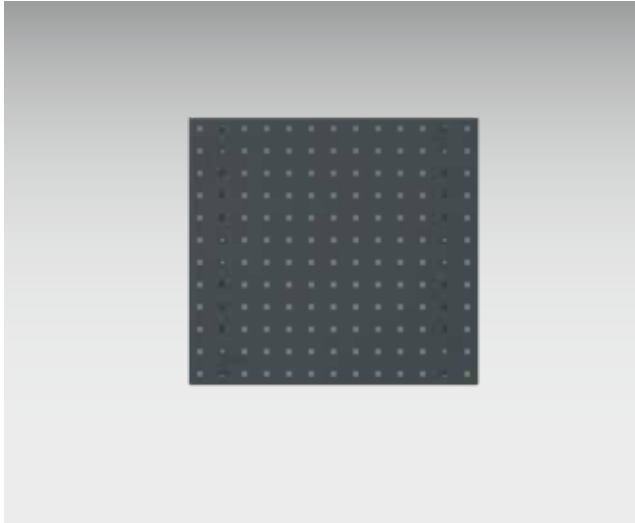
## Mobile Solutions

For mobile efficiency, panel racks and trolleys allow tools and components to be easily moved around the workplace.

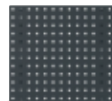
Contact our sales team for more information about our wide range of accessories.

## perfo wall panels

## perfo wall panels



- Powder coated perforated steel panels for use with perfo hooks and holders
- High rigidity due to side folds
- Additional reinforcements on the back
- Perforation: 9.2 x 9.2 mm, hole spacing: 38.1 mm
- Accessories lock into place with the supplied clip
- Hole spacing is maintained across the panel edge in multiple panel installations



Design	perfo	perfo	perfo
Dimensions W x H [mm]	495 x 457	991 x 457	1486 x 457
Order ref.	14025115.**	14025117.**	14025118.**



## Panel colour:



RAL 7016 – anthracite grey   RAL 5010 – gentian blue   RAL 7035 – light grey   RAL 3004 – crimson red

## perfo hook kits

## perfo hook kit 10 piece



- 5 Hooks D 25 mm
- 5 Spring clips Ø 13 mm

Order ref.

14031410

## perfo hook kit 11 piece



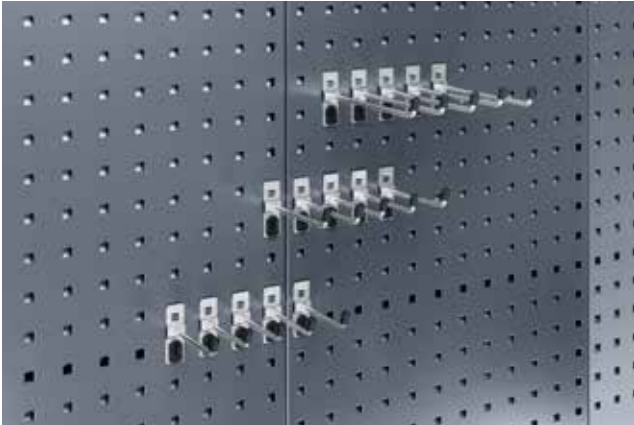
- 5 Hooks D 75 mm
- 5 Double hooks D 75 mm
- 1 Spanner holder

Order ref.

14030064

## perfo hook kits

## perfo hook kit 15 piece



- 5 Hooks D 75 mm
- 5 Hooks D 100 mm
- 5 Hooks D 150 mm

Order ref.

14031427

## perfo hook kit 15 piece



- 5 Hooks D 25 mm
- 5 Double hooks D 75 mm
- 1 Spanner holder
- 1 Saw holder
- 1 Screwdriver holder
- 1 Allen key holder
- 1 Drill holder

Order ref.

14031411

## perfo hook kits

## perfo hook kit 20 piece



- 5 Hooks D 25 mm
- 5 Double hooks D 75 mm
- 5 Spring clips Ø 13 mm
- 1 Spanner holder
- 1 Saw holder
- 1 Screwdriver holder
- 1 Allen key holder
- 1 Drill holder

Order ref.

14031412

## perfo hook kit 21 piece



- 5 Hooks D 100 mm
- 6 Pipe bracket holders 60 dia x 35 mm wide
- 5 Power tool holders 40 dia.
- 5 Power tool holders 60 dia.

Order ref.

14031418

## perfo hook kits

## perfo hook kit 25 piece



- 5 Extended hooks D 25 mm
- 5 Extended hooks D 50 mm
- 5 Extended hooks D 75 mm
- 5 Double hooks D 50 mm
- 5 Spring clips Ø 19 mm

Order ref.

14030101

## perfo hook kit 30 piece



- 5 Hooks D 25 mm
- 5 Hooks D 50 mm
- 5 Double hooks D 25 mm
- 5 Spring clips Ø 6 mm
- 5 Spring clips Ø 13 mm
- 5 Spring clips Ø 25 mm

Order ref.

14031413

## perfo hook kits

## perfo hook kit 60 piece



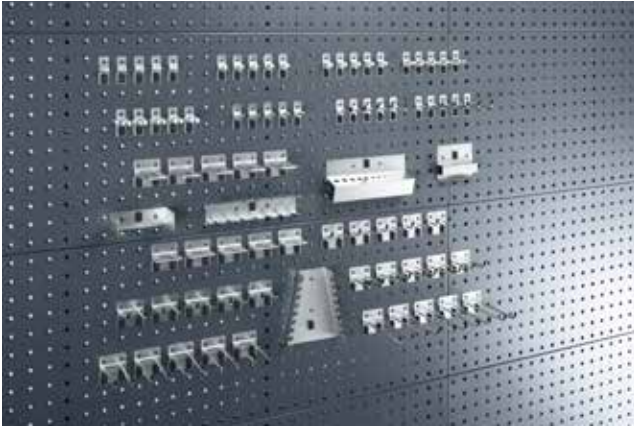
- 5 Hooks D 25 mm
- 5 Hooks D 50 mm
- 5 Double hooks D 25 mm
- 5 Double hooks D 75 mm
- 5 Double hooks D 100 mm
- 5 Double hooks D 150 mm
- 5 U-Holder 56 x 20 mm
- 5 Spring clips Ø 6 mm
- 5 Spring clips Ø 13 mm
- 5 Spring clips Ø 19 mm
- 5 Spring clips Ø 25 mm
- 1 Spanner holder
- 1 Saw holder
- 1 Screwdriver holder
- 1 Allen key holder
- 1 Drill holder

Order ref.

14031415

## perfo hook kits

## perfo hook kit 80 piece



- 5 Hooks D 25 mm
- 5 Hooks D 50 mm
- 5 Hooks D 100 mm
- 5 Double hooks D 25 mm
- 5 Double hooks D 50 mm
- 5 Double hooks D 75 mm
- 5 Double hooks D 100 mm
- 5 Double hooks D 150 mm
- 5 U-Holder 56 x 20 mm
- 5 U-Holder 32 x 75 mm
- 5 Spring clips Ø 6 mm
- 5 Spring clips Ø 10 mm
- 5 Spring clips Ø 13 mm
- 5 Spring clips Ø 19 mm
- 5 Spring clips Ø 25 mm
- 1 Spanner holder
- 1 Saw holder
- 1 Screwdriver holder
- 1 Allen key holder
- 1 Drill holder

Order ref.

14031416



## perfo wall cupboards

## perfo wall cupboard



- Robust and sturdy steel construction
- Rear panel with perforation or louvred form, depending on version
- Hinged doors, with perfo perforated lining
- Usable depth: 300mm



Version	empty	empty
Rear panel	perfo	perfo
Dimensions W x D x H [mm]	1050 x 325 x 700	1050 x 325 x 1000
<b>Order ref.</b>	<b>40031053.**V</b>	<b>40031062.**V</b>

## perfo wall cupboard with hook kit



- Robust and sturdy steel construction
- Rear panel with perforation or louvred form, depending on version
- Hinged doors, with perfo perforated lining
- Usable depth: 300mm
- Includes 40 piece hook kit



Version	with 40 piece hook kit	with 40 piece hook kit
Rear panel	perfo	perfo
Dimensions W x D x H [mm]	1050 x 325 x 700	1050 x 325 x 1000
<b>Order ref.</b>	<b>40031055.**V</b>	<b>40031067.**V</b>

## perfo wall cupboards

## perfo wall cupboard with shelf



- Robust and sturdy steel construction
- Rear panel with perforation or louvred form, depending on version
- Hinged doors, with perfo perforated lining
- Usable depth: 300mm



Version	with shelf	with shelf
Rear panel	perfo	perfo
Dimensions W x D x H [mm]	1050 x 325 x 700	1050 x 325 x 1000
<b>Order ref.</b>	<b>40031054.**V</b>	<b>40031069.**V</b>

## Additional shelves



- Two support brackets for mounting in 25 mm increments
- Load bearing capacity: 75 kg
- Surface: galvanised

Dimensions W x D x H [mm]	1050 x 325 x 25
For system width [mm]	1050
<b>Order ref.</b>	<b>42101069.51V</b>

## Housing:

RAL 7035 – light grey

## Top, bottom and fronts:

.19 RAL 7016 – anthracite grey  
 .11 RAL 5010 – gentian blue  
 .16 RAL 7035 – light grey  
 .24 RAL 3004 – crimson red

## Housing:

RAL 7016 – anthracite grey

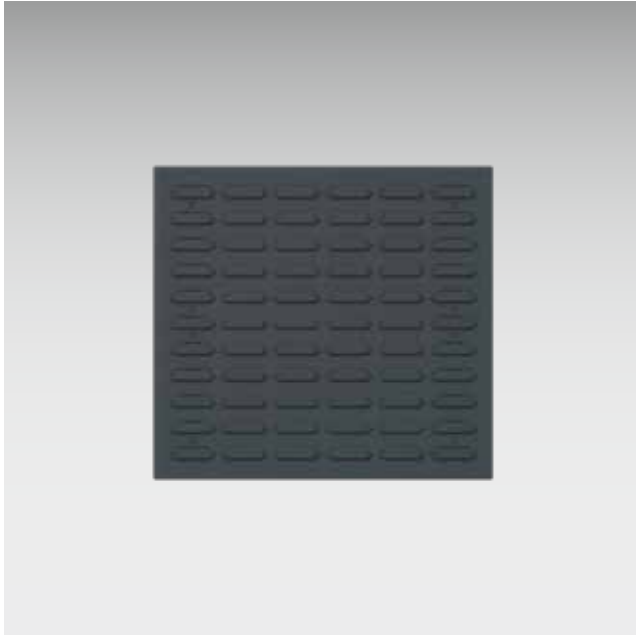
## Top, bottom and fronts:

.77 RAL 7016 – anthracite grey

41

# louvre wall panels

## Horizontal louvre wall panels



- Embossed sheet steel panels for attaching plastic bins and tool blocks
- High rigidity due to side folds
- Additional reinforcements on the back



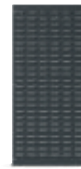
Design	Horizontal	Horizontal	Horizontal
Dimensions W x H [mm]	495 x 457	990 x 457	1486 x 457
<b>Order ref.</b>	<b>14025137.**</b>	<b>14025139.**</b>	<b>14025140.**</b>

# louvre wall panels

## Vertical louvre wall panels







- Embossed sheet steel panels for attaching plastic bins and tool blocks
- High rigidity due to side folds



Design	Vertical	Vertical	Vertical
Dimensions W x H [mm]	457 x 495	457 x 991	457 x 1486
Order ref.	14025147.**	14025148.**	14025149.**

### Panel colour:

 .19	 .11	 .16	 .24
RAL 7016 – anthracite grey	RAL 5010 – gentian blue	RAL 7035 – light grey	RAL 3004 – crimson red

## bottBoxes

## bottBoxes



- Sturdy, durable shelf box made of polypropylene
- Easy to clean thanks to smooth inner sides
- bottBoxes of the same width are stackable
- Removable label clip for inserting a paper strip (H = 16 mm)
- Optional label clips in 3 further colours available for colour coding
- Ergonomic recessed grip at the front
- Additional gripping option at the back from size M3
- Strip at the back for suspension on louvred panels
- Possibility of inserting a stock card in bank card format on the back from size M2
- Colour: anthracite grey (RAL 7016)



Version	M1	M2	M3	L3	M4	L4	L5
Dimensions W x D x H [mm]	130 x 100 x 65	130 x 198 x 90	130 x 298 x 165	264 x 298 x 165	130 x 398 x 165	264 x 398 x 165	264 x 498 x 165
Pack of	48	36	24	12	12	6	6
<b>Order ref.</b>	<b>13022045.19</b>	<b>13022046.19</b>	<b>13022047.19</b>	<b>13022048.19</b>	<b>13022049.19</b>	<b>13022050.19</b>	<b>13022052.19</b>

## perfo panel trolley

1250mm high



- 40 Piece kit
- 10 Hooks
- 10 Double hooks
- 5 U-holder
- 10 Spring clips
- 1 Spanner holder
- 1 Saw holder
- 1 Screwdriver holder
- 1 Allen key holder
- 1 Drill holder
- 4 Swivel & brake castors

Version	With 40 piece hook kit	empty
Dimensions W x D x H [mm]	1000 x 550 x 1250	1000 x 550 x 1250
Order ref.	<b>16917260.**V</b>	<b>16917160.**V</b>

## Frame:

RAL 7035 – light grey

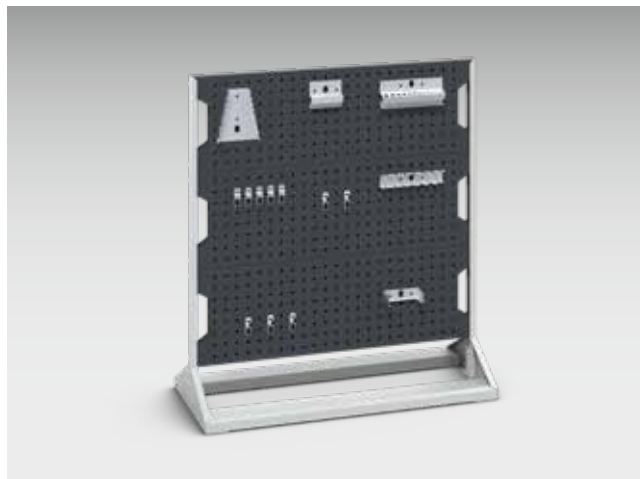
## Panel:

.19
.11
.16
.24

RAL 7016 – anthracite grey   RAL 5010 – gentian blue   RAL 7035 – light grey   RAL 3004 – crimson red

## perfo panel rack

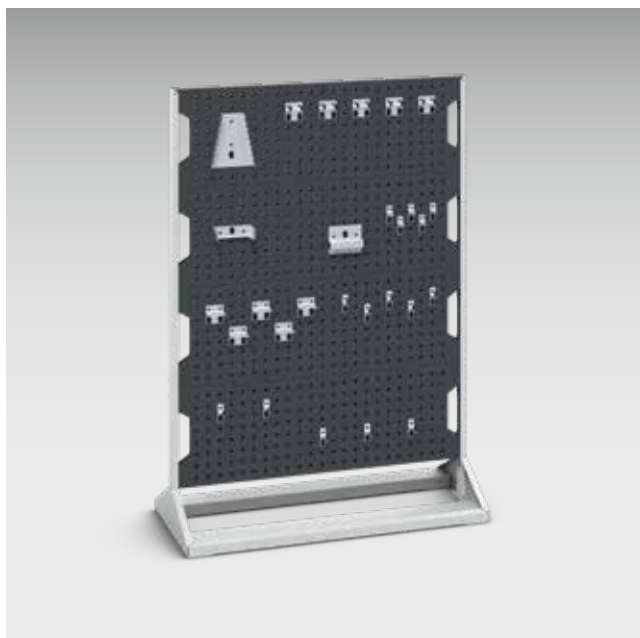
## 1125mm high



- 40 Piece kit
- 10 Hooks
- 10 Double hooks
- 5 U-holder
- 10 Spring clips
- 1 Spanner holder
- 1 Saw holder
- 1 Screwdriver holder
- 1 Allen key holder
- 1 Drill holder

Version	With 40 piece hook kit	empty
Dimensions W x D x H [mm]	1000 x 550 x 1125	1000 x 550 x 1125
<b>Order ref.</b>	<b>16917200.**V</b>	<b>16917100.**V</b>

## 1450mm high



- 60 Piece kit
- 10 Hooks
- 20 Double tool hooks
- 5 U-holders
- 20 Spring clips
- 1 Spanner holder
- 1 Saw holder
- 1 Screwdriver holder
- 1 Allen key holder
- 1 Drill holder

Version	With 60-piece hook kit	empty
Dimensions W x D x H [mm]	1000 x 550 x 1450	1000 x 550 x 1450
<b>Order ref.</b>	<b>16917201.**V</b>	<b>16917101.**V</b>

## perfo panel rack



## Frame:

RAL 7035 – light grey

## Panel:

.19
.11
.16
.24

RAL 7016 – anthracite grey   RAL 5010 – gentian blue   RAL 7035 – light grey   RAL 3004 – crimson red

## Louvre panel trolley

1250mm high

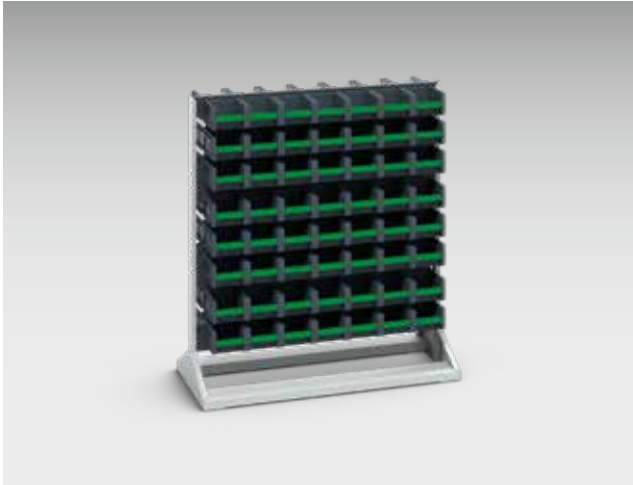


- 84 Piece kit
- 42 bottBox M2 (130 x 198 x 90 mm)
- 42 bottBox M3 (130 x 298 x 165 mm)
- 4 Swivel & brake castors

Version	with bottBoxes	empty
Dimensions W x D x H [mm]	1000 x 550 x 1250	1000 x 550 x 1250
<b>Order ref.</b>	<b>16917390.**V</b>	<b>16917170.**V</b>

# Louvre panel rack

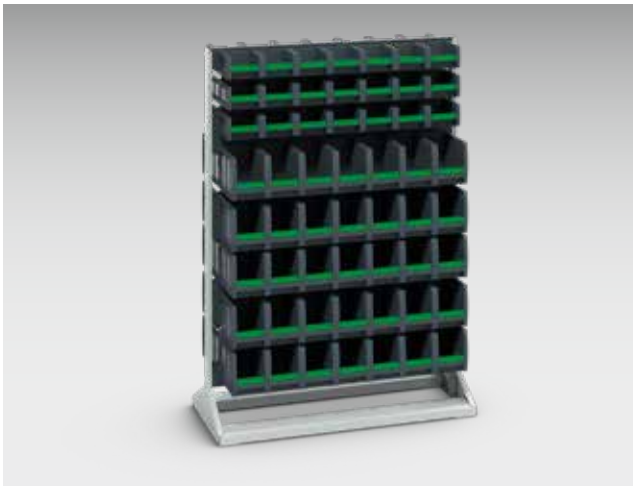
## 1125mm high



- 112 Piece kit
- 112 bottBox M2 (130 x 198 x 90 mm)

Version	with bottBoxes	empty
Dimensions W x D x H [mm]	1000 x 550 x 1125	1000 x 550 x 1125
Order ref.	<b>16917350.**V</b>	<b>16917120.**V</b>

## 1450mm high



- 112 Piece kit
- 42 bottBox M2 (130 x 298 x 90 mm)
- 70 bottBox M3 (130 x 298 x 165 mm)

Version	with bottBoxes	empty
Dimensions W x D x H [mm]	1000 x 550 x 1450	1000 x 550 x 1450
Order ref.	<b>16917360.**V</b>	<b>16917121.**V</b>

### Frame:

RAL 7035 – light grey

### Panel:

.19
.11
.16
.24

RAL 7016 – anthracite grey   RAL 5010 – gentian blue   RAL 7035 – light grey   RAL 3004 – crimson red

## Notes



Notes



Our main Workplace Storage Equipment catalogue showing our full range is available to download from our website.



For more information please contact your local dealer:



**STORAGE DESIGN LIMITED**  
**Primrose Hill**  
**Cowbridge**  
**South Wales**  
**CF71 7DU**  
**Tel: 01446 772614**  
**email: [info@storage-design.ltd.uk](mailto:info@storage-design.ltd.uk)**  
**web: [www.storage-design.ltd.uk](http://www.storage-design.ltd.uk)**