

New Impressions

HunterDouglas WorldWide

New
Impressions 

HunterDouglas WorldWide

The ability to innovate defines success in architecture and design: Doing more with less. Meeting evolving design standards. And helping create structures that enhance sustainability inside and out.

At Hunter Douglas Architectural, we continually develop products that improve building comfort and performance while reducing environmental impacts. Our tradition of bringing breakthrough products to market makes us the company of choice for an array of project solutions, including interior and exterior window coverings, acoustical and metal and wood ceilings, and sun control and façade systems.

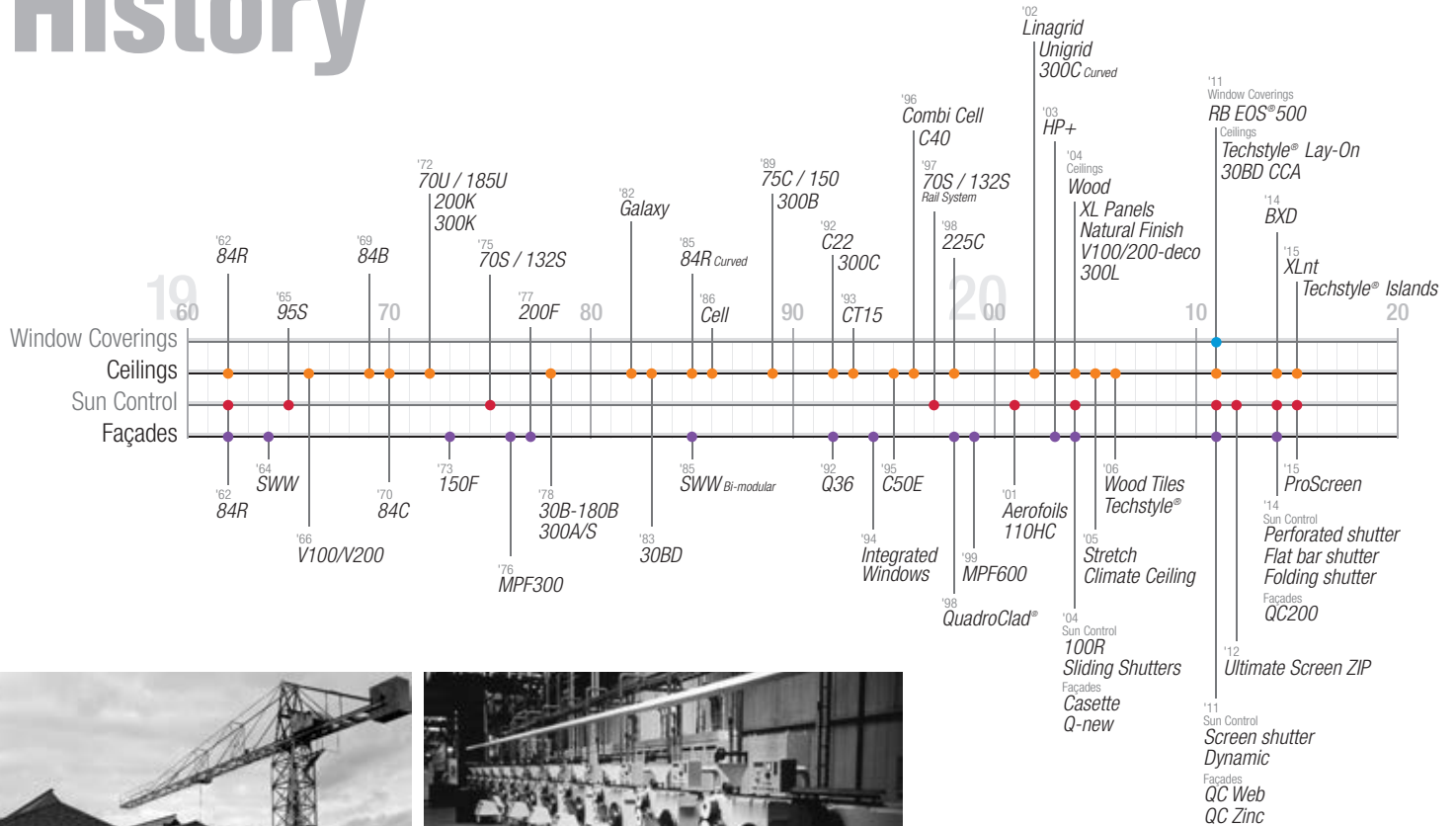
'Innovative Products Make Innovative Projects'

*'Inspiring environments stimulate
creativity and effectiveness of people'*

Content

Introduction	5 - 7
Sustainable Comfort	8 - 11
Window Coverings	12 - 45
Ceilings	46 - 167
Sun Control	168 - 195
Façades	196 - 249
Product info	250 - 251

History



Innovation lies at the heart of the Hunter Douglas culture through research, as well as actively encouraging new talent.

From our founding in 1919, Hunter Douglas has been a home for innovators. Established by entrepreneurs, our culture has been one of innovation and advancement that attracts the best and the brightest. With global manufacturing and distribution capabilities, our international presence is uniquely multi-cultural, yet distinctly dedicated to a shared vision to meet the ever-changing needs of our customers.

We never stop innovating at Hunter Douglas. Innovation is at the very core of our business. Our decentralized structure actively stimulates innovation throughout the company where we encourage constant experimentation with our products. Many of our most exciting developments are born from the front line of the organization. At our specialized R&D centers in the United States, The Netherlands, Germany and Asia our engineers and designers are working together developing new products. It's fun and exciting to develop and refine products that enhance and manage light but also satisfy design conscious consumers and architects. Even the smallest refinement in a product can bring around big benefits in energy savings and light management for homes and offices.

Architects are our inspiration. At Hunter Douglas we actively collaborate with customers to develop new product concepts and sustainable solutions for window coverings and architectural products. We are continually seeking, testing and developing new concepts and products that will enable us to meet ever-more-demanding standards of performance. Our growing range of sun control solutions, ceilings, façades and window coverings help today's architects move their projects to the forefront of sustainable building.

HunterDouglas Architectural

Business is people. At Hunter Douglas, we pride ourselves in our employees - a network of experienced, intelligent, passionate and creative men and women from over 100 countries who work together in a spirit of collaboration. That's what keeps Hunter Douglas at the forefront of innovation and design.



Building the Future Together

The past decade has produced many changes in the way we think about buildings and how we use them. A range of factors - from government initiatives, the impact of economic conditions, to shifting behaviors at home and work - have all had many effects. As a society, we need to find new ways to consume less energy in our homes and offices and to design new spaces that are flexible, comfortable and sustainable. By sharing the benefits design and new technology can offer, we can achieve substantial advantages in the built environment.

Over decades, our collaborative partnerships with architects have helped Hunter Douglas stay at the forefront of innovation, creating smart technologies and new solutions to maximize building performance and sustainability. Our expertise in customization, fabrication, installation and technical support has led to outstanding products with excellent design, best-in-class performance and exceptional durability. With major operation centers in Europe, North America, Latin America, Asia, and Australia, we've contributed to thousands of high-profile installations, from retail and commercial facilities to major transit centers and government buildings.

This third edition of our Impressions book showcases exciting projects and designs featuring inspirational interior and exterior projects, all of which have been "future proofed" to surpass increasingly tough design requirements from all sources.



Aad Kuiper
President & CEO
Hunter Douglas European Operations

Hunter Douglas high performance solutions contribute to sustainable building architecture

*‘Good indoor environmental quality and
substantial energy savings go hand in hand’*

Sustainable Comfort

Sustainability

Comfort, Energy and Materials are at the heart of Hunter Douglas' philosophy to provide sustainable solutions.

Solutions that balance these elements are at the heart of sustainable architecture. Comfort is an integral element of sustainable construction as underlined by building rating systems like LEED, BREEAM and DGNB.

Specifying solutions that enhance interior comfort and indoor environmental quality are essential as we spend more than 90% of our life indoors. Worker productivity is significantly impacted by both good indoor climate (positively) and bad indoor climate (negatively). In a typical office over 80% of the costs are people related whereas usually less than 1% is spent on energy. Solutions that enhance productivity even by as little as 1% can create significant financial benefits that are often more significant than reducing energy use by 50%.

Comfort in the indoor environment is usually composed of four key aspects:

Visual: Visual comfort is a key component as highly glazed facades and the use of daylight can conflict with the use of computer display devices. Glare is frequently experienced in offices and classrooms. Glare can be reduced by modulating incoming sunlight and reducing brightness ratios. Hunter Douglas window coverings solutions achieve the highest ratings for glare protection.

Thermal: Air temperature and the temperature of the surrounding window surfaces play an equally important role as both temperatures are influenced by solar heat gain through windows. To create optimal thermal comfort both external and internal shading strategies can help achieve a balanced thermal environment. Energy-saving building envelopes with award winning Hunter Douglas shading systems, help control solar heat gain and reduce temperatures, with a minimum need for cooling equipment.

Acoustic: The trend towards open plan offices with individual workstations rather than traditional walled offices can result in workers experiencing poor acoustic comfort, speech intelligibility and speech privacy. Noise of equipment and conversation have been shown to impact worker well-being and productivity. Hunter Douglas acoustical ceiling systems improve the acoustic environment, having noise reduction coefficients (NRC) up to 0.85.

Indoor Air Quality: Research shows that poor indoor air quality relates to health problems and reduced human performance. IAQ problems can have many causes, off-gassing of materials being one of them. Hunter Douglas has a full line of low VOC products that pass the GreenGuard® Air Quality Certified® and GreenGuard® for Children and SchoolsSM standards. All GreenGuard Certified Products have been tested for their chemical emissions performance including for formaldehyde, other volatile organic compounds (VOCs) and respirable particles.

Hunter Douglas solutions can deliver significant environmental benefits by improving buildings' performance, and may contribute to LEED, BREEAM and DGNB certification.

Window Coverings: Controlling light improves visual comfort and energy efficiency

Ceilings: Solutions that ensure long product life and excellent acoustical performance

Sun Control: Systems manage solar thermal gain to save on cooling energy and reduce carbon footprint

Façades: Ventilated approaches to cladding offer sustainable benefits for both new construction and building refits

Energy use and supply are of prime importance in building rating systems as LEED, BREEAM and DGNB. They are also at the forefront of many governmental information campaigns derived from Europe's 20-20-20 goals, aiming at 20% reduction of greenhouse gas emissions compared to 1990, a 20% share of energy from renewable resources and a 20% improvement in energy efficiency.

Sometimes one gets the impression that energy savings are the one and only objective. Too single minded an approach might jeopardize indoor climate. Fortunately, energy efficiency and good indoor environmental quality need not be at odds. On the contrary, it just takes an integrated strategy to design a great building that reconciles seemingly incompatible requirements. Harnessing the sun and managing daylight are key strategies in getting the best from the largest free energy flux available to us: light from our sun.

The environmental impact of the use of materials in the built environment is getting increased attention. This is not surprising as buildings are among the heaviest constructions we create and the environmental impact is directly proportional to the amount of material used. At Hunter Douglas our strategy is to pick materials that have good environmental properties. Next, we process them as efficiently as possible to minimise any adverse impact at this stage of their life. The design and quality of our products ensure a long lifespan not only technically but also aesthetically. This aspect often has a decisive influence on the eventual lifetime and therefore environmental impact of a product or material.

Our paint and aluminium melting processes are considered to be one of the industry standards in terms of clean production processes. All aluminium products are 100% recyclable at the end of their lifecycle.



Hunter Douglas products and solutions are designed to improve indoor environmental quality and conserve energy, supporting built environments that are comfortable, healthy, productive, and sustainable.



The Dutch Green Building Council (DGBC) was founded in 2008 in The Netherlands as a market initiative. The aim was to make Sustainability in the building industry measurable by developing a sustainability label allowing for the uniform rating of buildings throughout The Netherlands.



About Archiprix International

Archiprix International presents the world's best graduation projects every two years in the fields of architecture, urban design and landscape architecture. University level training colleges around the world are invited to take part by selection and submitting their best graduation project. Archiprix International forms the largest presentation of graduation work and offers unrivalled insight into current trends in design education globally and architecture generally. The Archiprix International biennial travel program, developed and led by sponsor Hunter Douglas, is a critically acclaimed architectural tour opportunity.

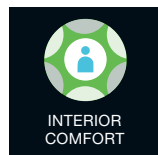


The Archiprix International Hunter Douglas Awards

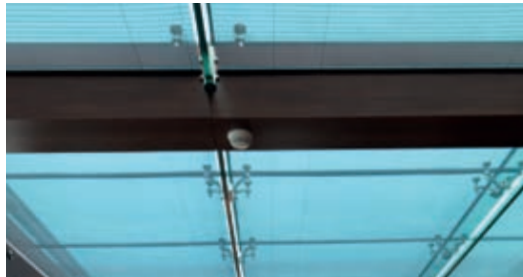
*‘Well designed Intelligent daylighting
and shading systems can provide
good comfort with personal control’*

HunterDouglas Window Coverings a complete sustainable comfort program

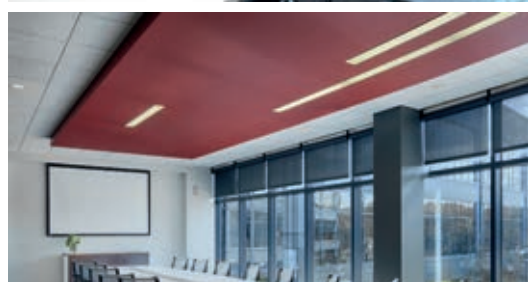
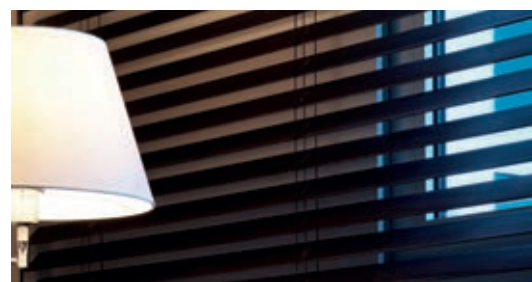
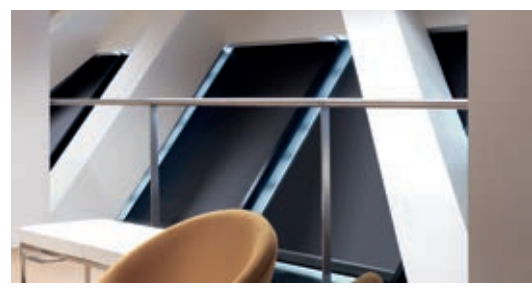
Window coverings



Design, Functionality and Comfort: Our Window Covering come under the general term 'solar shading', which means that they allow control of the amount of heat and light emitted by the sun. That is to the benefit of comfort and energy consumption, because Hunter Douglas solar shading products keep excessive heat out in the summer and gently filter the abundant sunlight, while optimizing the use of the inexhaustible source of the free, renewable energy that is natural daylight.



HunterDouglas Window Coverings a complete sustainable comfort program







Project : Al Muraqabat Park Hyatt Apartments
Location : Dubai, United Arab Emirates
Product : Wood Venetian Blinds
Architect : Samuel Creations



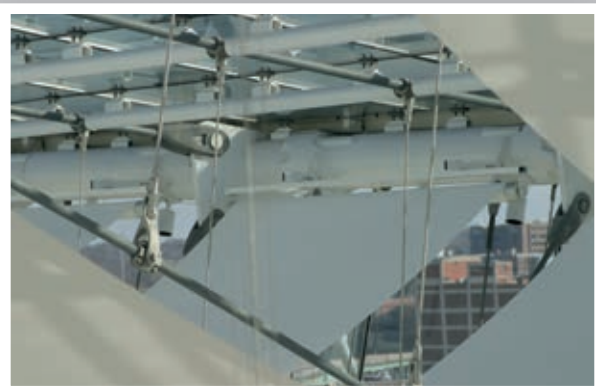
Al Muraqabat

Dubai, United Arab Emirates

Park Hyatt Apartments

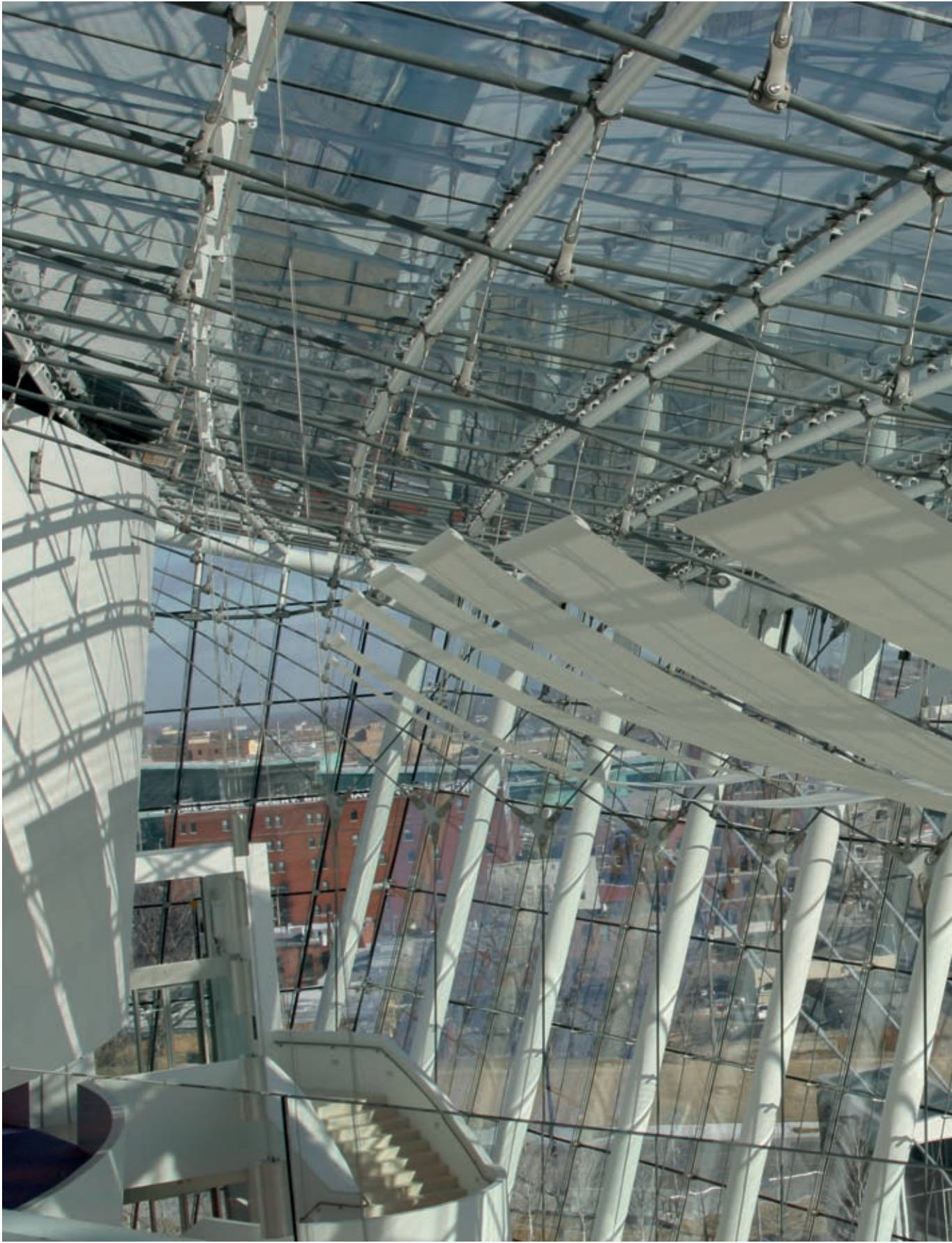
KAUFFMAN CENTER FOR PERFORMING ARTS

Kansas City, North America



Designed by renowned architect Moshe Safdie, the Kauffman Center for the Performing Arts has emerged as an architectural icon and world-class performance space. The center features a distinctive cable-tensioned glass atrium which serves as both the lobby and lounge space for performance-goers.

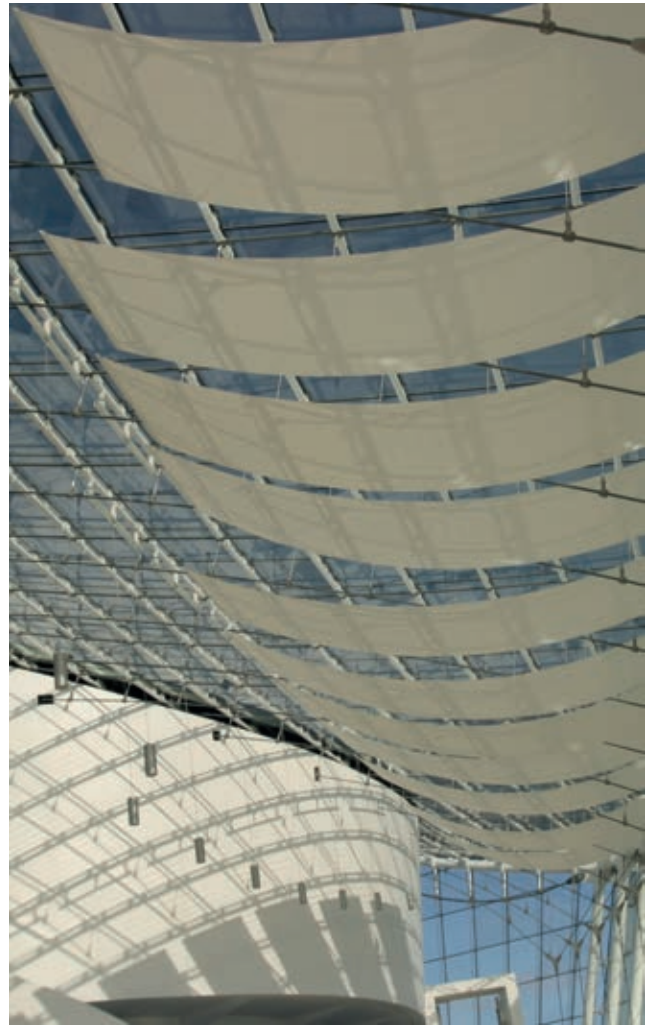




Kauffman Center for Performing Arts • Kansas City, North America



Requiring an equally special solar control solution, HunterDouglas® custom engineered sail shades were selected. The motorized, retractable shades not only ease glare and reduce heat gain, but also contribute to the overall design aesthetic of the space. By controlling the amount of light entering in through the glass the motorized, retractable shades create a more comfortable, energy-efficient space for its occupants and owners.

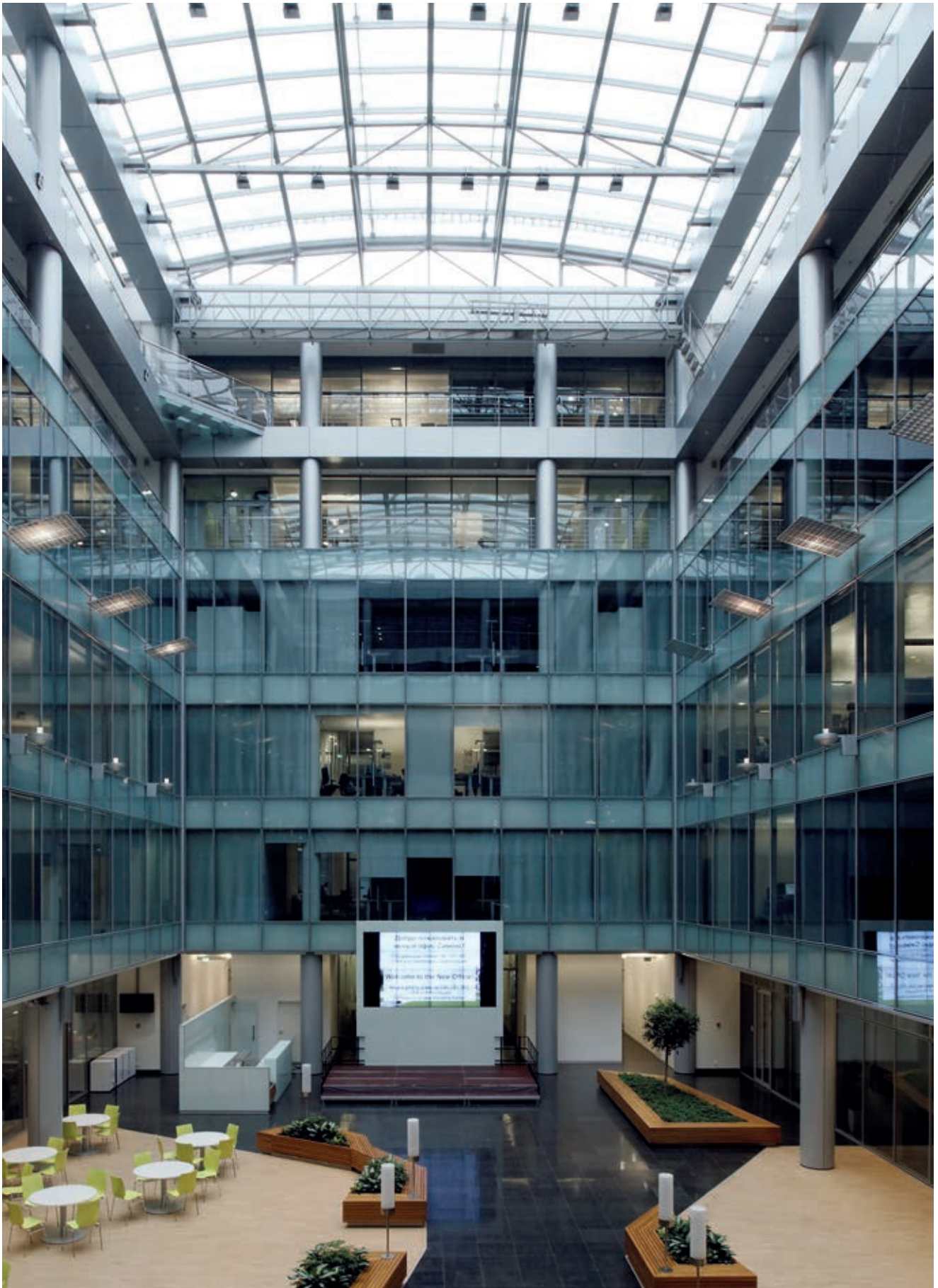


Project : Kauffman Center for Performing Arts
Location : Kansas City, North America
Product : Custom Roller Blinds (*Custom Counterbalanced Sail Shades*)
Architect : Safdie Architects



Project : Siemens office in Russia
Location : Moscow, Russia
Product : EOS®500 Roller Blinds and External Venetian Blinds
Architect : ABD architects

Siemens office *Moscow, Russia* *in Russia*



Organization of space

The management of Siemens Company has decided to combine the separate offices and acquired a six-storey building with a large bright atrium and an underground parking on two levels in the center of Moscow. At the end of the atrium there is a multimedia wall, a bar, and the whole area is fitted with custom designed benches and fresh flowers. These and other mobile equipment can be easily removed from the atrium to hold a conference or party. The second, third, fourth and fifth floor - a total open space - where the glass walls overlook the atrium and are provided with Hunter Douglas EOS®500 Roller blinds.



The headquarters of the Unified National Power Grid operator has a lot of technical sections and analysis centers to manage all high-voltage backbone networks of the country. FGC is a very large company, there's even a helipad and the landscaping is adapted to the neighboring area. The company employs more than 24,000 people and has 924 substations operated. Several meeting rooms are equipped with Hunter Douglas blinds with blackout and transparent fabric and combined with curtains.



Project : Federal Grid Company of Unified Energy System office
Location : Moscow, Russia
Product : Roller blinds and Linear Ceiling 30BD
Architect : Arkkitehtitoimisto Larkas & Laine Oy



Federal Grid Company

Moscow, Russia



Project : Ritz Carlton Hotel
Location : Abu Dhabi, United Arab Emirates
Product : Motorized Shades
Architect : Otak

Ritz Carlton Hotel

Abu Dhabi, United Arab Emirates





Open, democratic, modern and comfortable

The Nowy Styl Group offers comprehensive furniture solutions for offices and public spaces for which it was necessary to create a multifunctional interior, inspiring each customer. The office is designed as a space that combines modern workstations with comfortable seating areas. An open, democratic, modern and comfortable office with a variety of complex furniture sections. In the middle of the office hangs a specially for this project custom made open ceiling systems from Hunter Douglas with panels in 6 different colors.



Project : Nowy Styl Group Office
Location : Moscow, Russia
Product : Roller blinds and Linear Ceiling V200
Architect : Andrey Gavrilov



Nowy Styl Group

Moscow, Russia

Office Building



Masdar *Dubai, United Arab Emirates*
Institute



Masdar Institute of Science and Technology

The world's first graduate-level university dedicated to providing real-world solutions to issues of sustainability. A world-class research-driven university, the Institute focuses on the science and engineering of advanced alternative energy, environmental and sustainability technologies.

Project : Masdar Institute
Location : Dubai, United Arab Emirates
Product : Motorized- and Sloped Roller Blinds
Architect : Foster & Partners



WHITE GARDENS OFFICE CENTER

Moscow, Russia



White Gardens is a Class A Office Center in Moscow developed by AIG Lincoln company. Its total rentable area is approximately 63,300 m² including 960 parking spaces on five underground levels. The floor-to-ceiling glass façade of the finished offices was covered with the Hunter Douglas Venetian blinds.





White Gardens Office Center • Moscow, Russia

Environmental conservation has been a guiding priority throughout every stage of White Gardens' development . White Gardens is in the process of being certified by BREEAM, from which it is expected to receive a 'Very Good' rating.



One of the finished offices is of Baring Vostok Capital Partners headquarter, designed by Pavel Polikarpov Architects Ltd. A Laconic interior with glass conference rooms, decorated with HunterDouglas® Roller Blinds, contrasting light walls and black HunterDouglas® Venetian Blinds. Marble decorative elements reflect the principles and position of the company, the oldest and the largest group of companies focusing on direct investments in Russia.

The other office is of Baker & Mc.Kenzie, designed by Sergey Estrin Architectural Studio. Restrained and designed in light colours with wooded details, the black HunterDouglas® Venetian Blinds perfectly fit the environment for the global law company, located on three floors of the White gardens business center.



Project : White Gardens Office Center
Location : Moscow, Russia
Product : Venetian Blinds
Architect : APA Wojciechowski Architects



The largest LEED® Gold-certified commercial facility in the state

Intelligent motor controls and best-in-class EOS®500 motorized roller blinds helped shape the look of the Hub Group's new headquarters, located in the Chicago suburb of Oak Brook, Illinois. The EOS®500 system's support for custom applications - including exceptionally large and angular windows - was showcased throughout the building, with more than 150 EOS®500 motorized coupled roller blinds of 30+ feet. Additionally, the system included an advanced PilotRQ™ weather station from ESI™ (a Hunter Douglas company), enabling shades to position themselves appropriately based upon sun angles. This intelligent programming ensured occupant comfort throughout the day by managing daylight and reducing the glare and solar heat gain within the space.



Project : Hub Group headquarters
Location : Oak Brook, Illinois, USA
Product : EOS®500 motorized Roller Blinds
Architect : Solomon Cordwell Buenz



Hub Group

Oak Brook, Illinois, USA

Headquarters



Nationwide San Antonio, USA *Insurance*

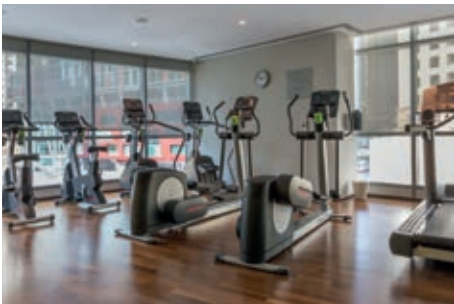


Multifunctional Office

Nationwide Insurance has opened a 27,000 m² office campus, located near the intersection of Hyatt Resort Drive and State Road 151 in San Antonio. The office property is LEED certified and achieved the Institute for Business & Home Safety's FORTIFIED status, meaning it exceeds code to withstand natural disasters such as hurricanes, wildfires and windstorms. The office complex also features a high-tech cafe, onsite health services, landscaped courtyards, an outdoor sports court and a fitness center. The property will house nearly 1,500 Nationwide employees with the capacity to house 2,000 total employees.

Project : Nationwide Insurance
Location : San Antonio, USA
Product : EOS®500 Roller Blinds
Architect : 360 Architects and SpawGlass





Project : InterContinental Dubai Marina
Location : Dubai, United Arab Emirates
Product : EOS®500 Roller Blinds
Architect : Drawlink Group

InterContinental

Dubai, United Arab Emirates

Dubai Marina





Design, Functionality and Comfort:

Hunter Douglas' range of Ceiling Solutions allows architects to explore designs with a variety of materials including metal, textiles and wood. Our wide range of systems, colours and finishes offers true freedom of design. All from a single source. Every part of a building works together to create a comfortable, healthy and productive environment for those inside. Hunter Douglas ceiling products help architects control noise, improve interior air quality and even manage light and heat.

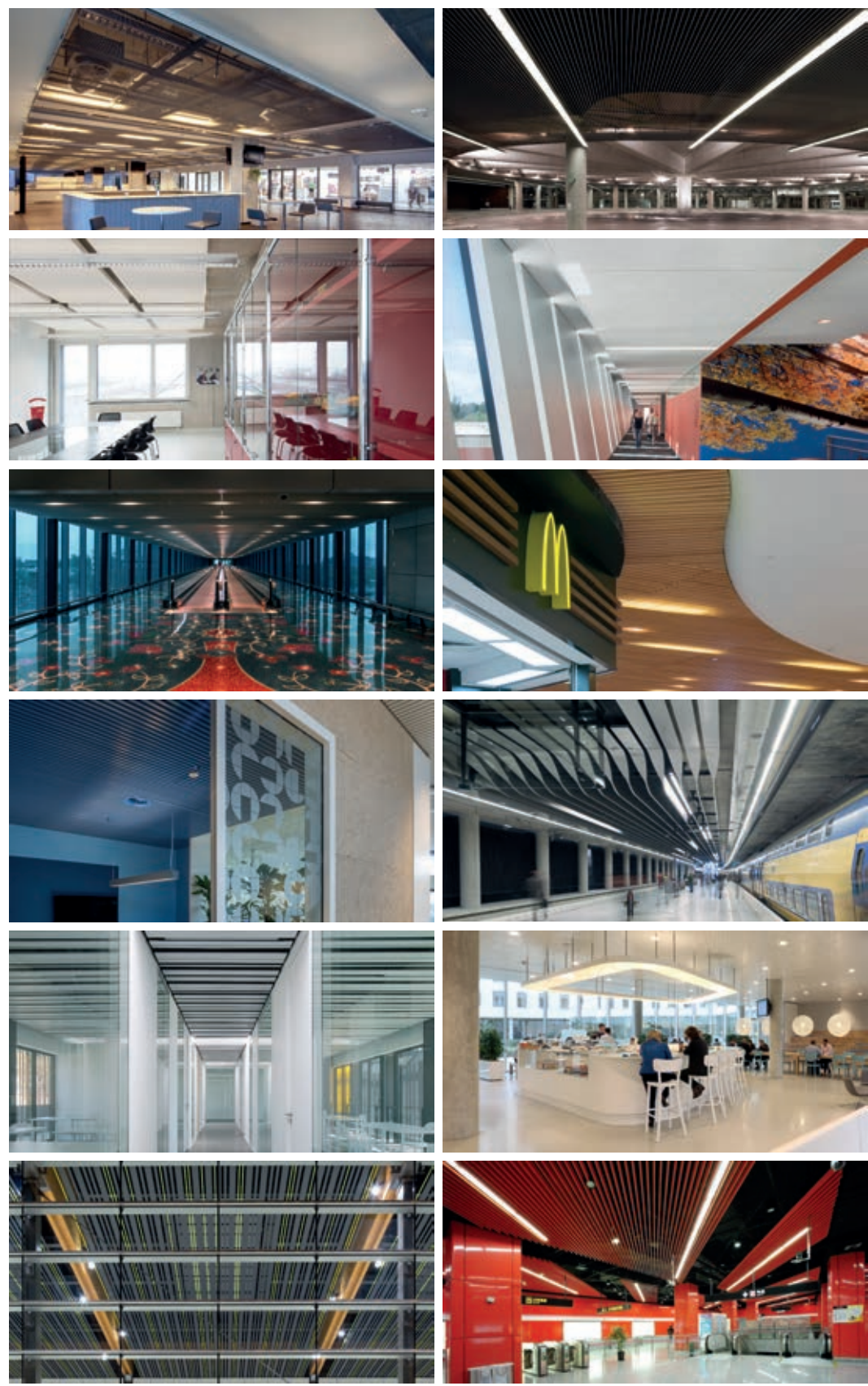
'Good acoustic comfort in an office, school or public building contributes to our well being'

Ceilings

HunterDouglas Ceilings a complete durable and functional comfort program



HunterDouglas Ceilings a complete durable and functional comfort program





Centre Permis

Gennevilliers, France



Project : Centre Permis
Location : Gennevilliers, France
Product : Multi Panel ceilings
Architect : a+ samueldelmas





Project : Conference Room in the Spanish Parliament
Location : Madrid, Spain
Product : Linear Solid Wood Grid
Architect : Ana Jiménez Díaz-Valero

Conference Room

Madrid, Spain

Spanish Parliament



Customized according to the architect original idea

This historic building has a 100% solid wood curved ceiling to create a warm atmosphere with high acoustic performance. The ceiling begins and finish in vertical application covering the room completely and connects with a classic furniture and high technology communication systems in the same room. The risky point was the complexity of the carrier system which was thought to hide the existing beams. The complete project is customized according to the architect original idea.



A unique custom ceiling

The underground train station Delft is the complete redevelopment of the railway zone in Delft. The project includes among others a tunnel with underground station, parking facilities, a new municipal offices, homes and offices, a park and water features. For the platform a unique ceiling was developed in close cooperation between Hunter Douglas and Benthem Crouwel Architects



Project : Spoorzone Delft
Location : Delft, The Netherlands
Product : Custom extrusion ceiling
Architect : Benthem Crouwel Architects



Underground

Delft, The Netherlands

train station Delft



Project : Chanhassen High School
Location : Chanhassen, MN, USA
Product : Multi Panel Wood print
Architect : Perkins + Will Architects

Chanhassen

Chanhassen, MN, USA

High School



A good example of successful school design

The architect envisioned a warm, real-wood ceiling for Chanhassen's new high school. 'We wanted to create a feeling of warmth, of an inviting atmosphere, 'We wanted to create something that reminded people more of a college campus building than a high school and I think we achieved that.' Hunter Douglas' aluminum linear ceiling system, profile-wrapped with real-wood veneer, was chosen to capture the warmth and aesthetics of real wood while utilizing an economical system, with the long-lasting stability of metal and the low-impact environmental aspects of highly recycled content aluminum and wood flitches. The use of warm wood tones, abundance of natural daylight and new fixtures throughout make Chanhassen's newest high school a good example of successful school design.





Project : Tesco Letňany Refit
Location : Prague, Czechia
Product : QuadroClad® Baffle Ceiling
Architect : Chapman Taylor Prague



Tesco Letňany Refit

Prague, Czechia



Shanghai Metro Shanghai, China *Line 13*



Boldly selected colours create an energetic yet neat and simple space

With a total length of 33.6 kilometers, Shanghai Metro Line 13 is a northwest-southeast underground diameter line that runs through the center and stretches over eight districts of the city. As an important artery of Shanghai's metro transportation network, Line 13 once served as an Expo Line that linked the Expo Park with the outside during 2010 Shanghai World Expo.

The design team boldly selected symbolic bright colours for all stations of the line and printed the images of Expo pavilions on the walls, so as to commemorate the special event. To meet the overall design requirements, the stations of Line 13 used Luxalon Baffle ceilings in bright red, yellow and green colors, which create an energetic yet neat and simple space.

Project : Shanghai Metro Line 13
Location : Shanghai, China
Product : Baffle Ceiling system
Architect : College of Fine Arts of Shanghai University



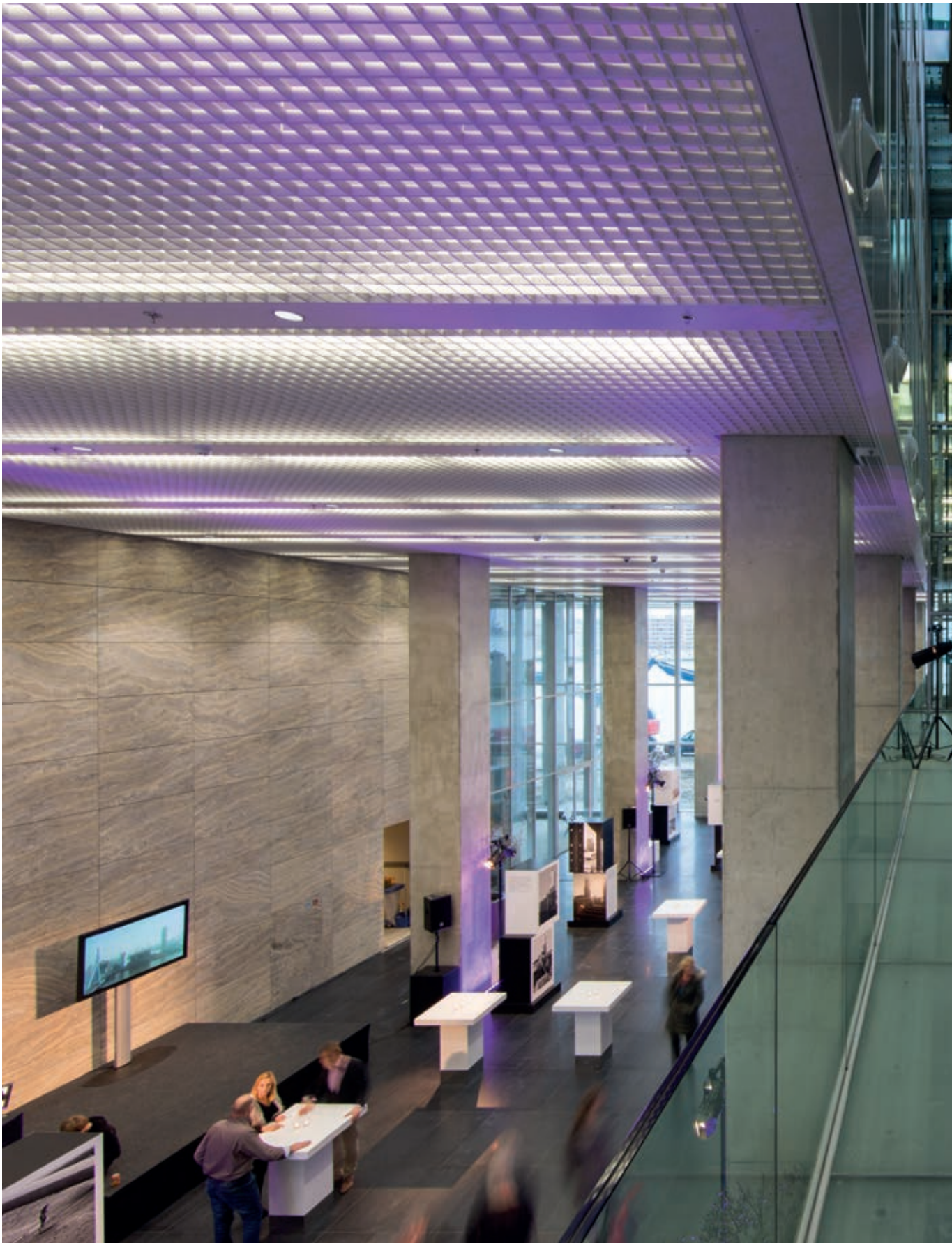
'DE ROTTERDAM' BUSINESS CENTRE

Rotterdam, The Netherlands



'De Rotterdam', the largest multifunctional building in The Netherlands, raises an area of 162,000 m². The concept of the property is a 44-stories 'vertical city' which houses a hotel, restaurants, offices and homes.





'De Rotterdam', Business Centre • Rotterdam, The Netherlands

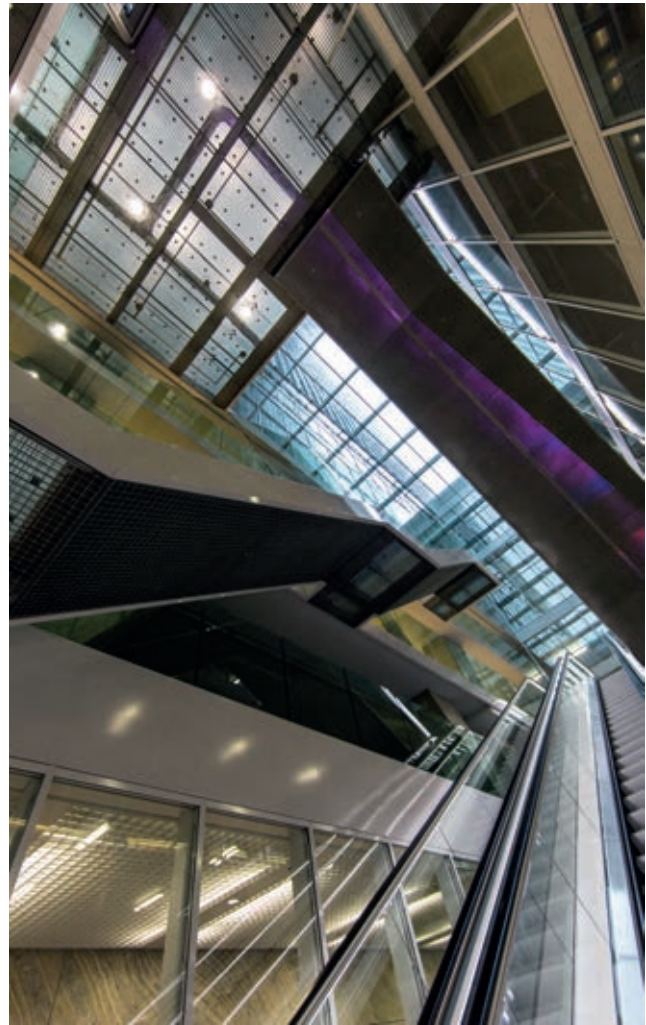
'De Rotterdam', the largest multifunctional building in The Netherlands, raises an area of 162,000 m²



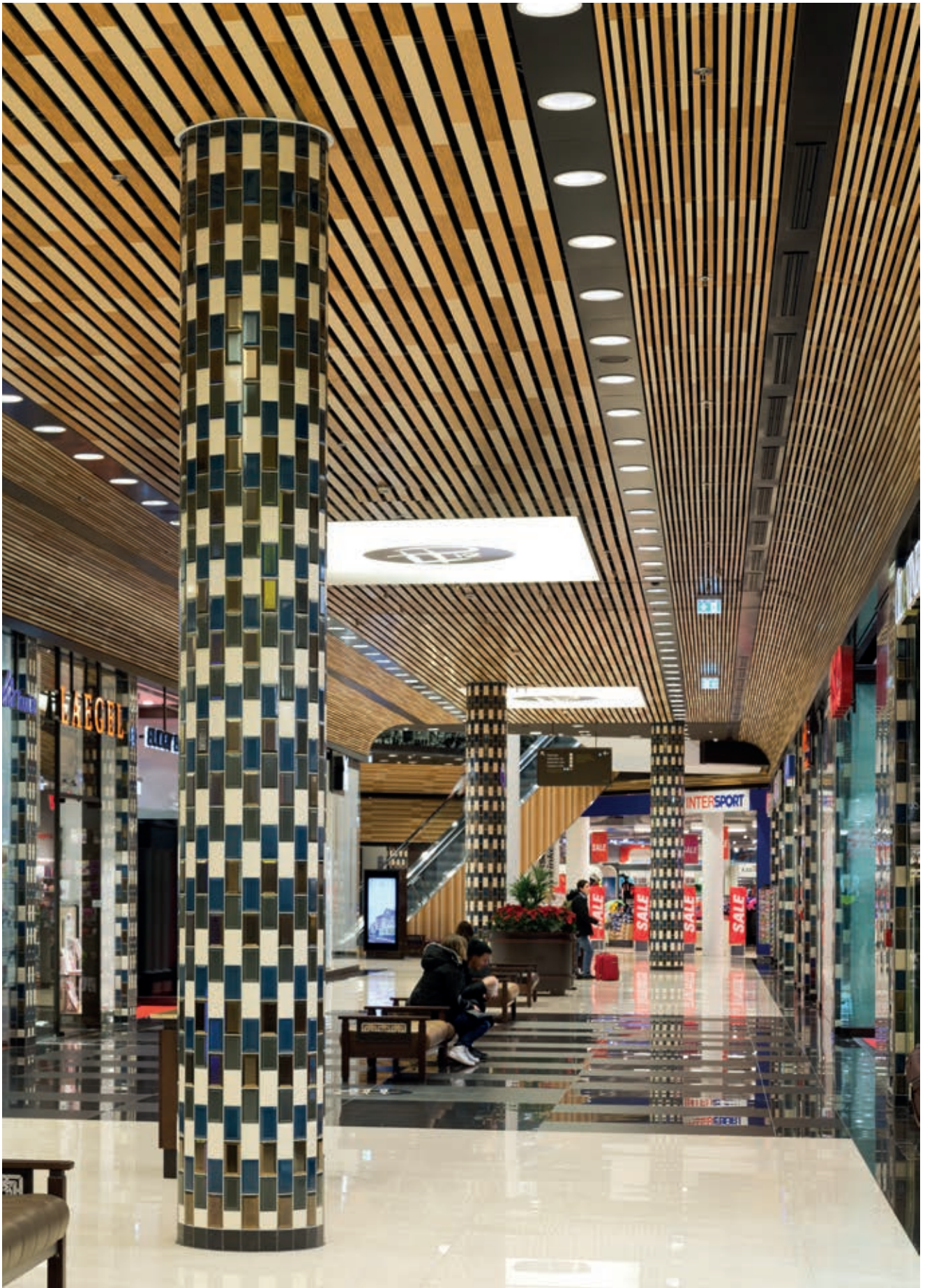
For the entire ground floor of the largest multifunctional building in The Netherlands (162,000 m²), 'De Rotterdam' a unique ceiling of 2,500 m² was custom designed.

Although the indoor and outdoor ceiling visually look the same, the outdoor ceiling must fulfill different requirements. The challenge was to have the ceiling on the outside withstand heavy wind gusts of up to 150 km/h and be corrosion resistant. By means of a special storm-resistant construction mounted above the ceiling panel, and applying a corrosion resistant coating that challenge was met.

The entire building is characterized by the uniform appearance of the facades. A uniform appearance was also desirable for the ceiling on the ground floor.



Project : 'De Rotterdam', Business Centre
Location : Rotterdam, The Netherlands
Product : Linear 225C- and Cell Ceilings
Architect : OMA/Rem Koolhaas





Project : EKZ Mall
Location : Liepziger Platz, Berlin, Germany
Product : 30BD and 80B Ceiling with 3 different Wood finishes
Architect : ARGE LP12



EKZ Mall

Liepziger Platz, Berlin, Germany



Project : Büwe Tefbau AG
Location : Rotkreuz, Switzerland
Product : Techstyle® Islands
Architect : Della Casa AG, Hünenberg

Büwe Tefbau AG

Rotkreuz, Switzerland



Hunter Douglas was asked to improve the acoustics and thus the intelligibility of speech in this conference room without major modifications to the existing grading. After studying the various options, we chose the solution of Techstyle® acoustic ceiling panels. The following properties of this product convinced the customer: • Slim island design • Excellent sound absorption for a perfect acoustic indoor climate with optimal reverberation time • Customized to islands • Easy and quick installation (supplied complete with suspension system) • Beat the price / performance ratio • High durability and 100% recyclable. By using these Techstyle® islands, the previously chilly space, become much warmer. The integrated lighting completes it all and give the entire room a harmonious overall picture. The result exceeded all expectations of the customer.





Project : University of Arizona Health Science Education
Location : Phoenix, AZ, USA
Product : Techstyle® Acoustical Ceiling
Architect : CO Architects (LA Branch)



University Phoenix, AZ, USA *Health Education*



Vitesse Papendal, The Netherlands
Trainingscentrum

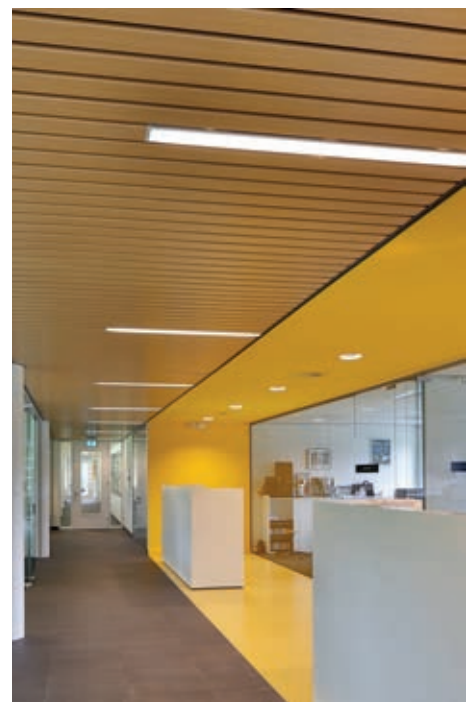


Tradition and ambition

Vitesse asked Desarc to make the identity of the club visible and tangible in the interior. This means the intelligent use of the colors yellow and black, and of course 'The Duke': the proud eagle in the image of the association. In the design we have assumed the values of Vitesse.

The new training and educational center of Vitesse includes five training fields and a tight building. Next to professional training and sports medicine facilities there are restaurants, a press conference room, offices and meeting rooms. The ceiling had to get a sporty character and join the wooded area. Therefore, the choice is made for aluminum strips with a wood pattern. In the long corridor, the building's main traffic axis, the linear ceiling seamlessly fused with the lighting. When you walk down the hallway this combination provides a dynamic rhythm that suggests movement. Another striking detail is the brass plating, which will remain natural. In some places this cladding continues inside, through the glass front. This transparency was important to match the design of the interior well with the building skin.

Project : Vitesse Trainingscentrum
Location : Papendal, The Netherlands
Product : Linear 80B
Architect : Desarc



CANARIAS AIRPORT NEW TERMINAL

Las Palmas de Gran Canaria, Spain



The main reason for choosing a Multi Panel 30BD ceiling was the experience of the architect at the renovation of Barajas Airport where the same product was integrated on frames producing a tile system. Then, due to the excellent result, the new design was a copied for Canarias Airport.





Canarias Airport, New Terminal • Las Palmas de Gran Canaria, Spain



Because of budget reasons, the frames were removed just before execution. The design was adapted by doubling the lengths of the panels and including a profile between sections in the open spaces of the Terminal.



Project : Canarias Airport, New Terminal
Location : Las Palmas de Gran Canaria, Spain
Product : Linear 30B customized colour + 80B/180B customized RAL 7015
Architect : Estudio LAMELA



Project : Vodafone
Location : Barendrecht, The Netherlands
Product : V100 ceiling with Woodfinish
Architect : a2d architecture

Vodafone

Barendrecht, The Netherlands



Vodafone global retail program

Hunter Douglas participates as a supplier in the Vodafone global retail program; the redesign of 8000 stores in 20 countries. The warm appearance of the stores is designed to attract an even wider audience by creating an inviting atmosphere. The Hunter Douglas V100 ceiling with a woodprint, matched to the Vodafone selected wood type, plays an important role in realizing the design objective.





Project : Narodowy Football Stadium
Location : Warsaw, Poland
Product : Stretch Metal Ceiling
Architect : JSK



Narodowy Warsaw, Poland *Football Stadium*



Project : Calivornia, Freizeitbad
Location : Leverkusen, Germany
Product : Linear Solid Wood Grid
Architect : Foest Architektur

Calivornia Leverkusen, Germany *Freizeitbad*





PHX Sky Train™

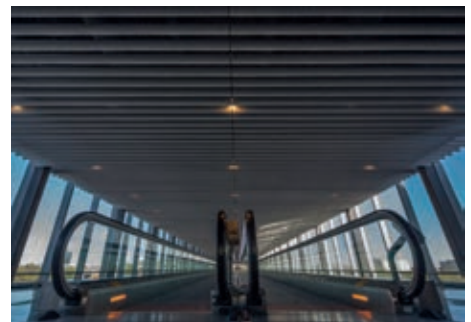
Phoenix, AZ, USA



Opportunities for open innovation

HOK, architects of PHX Sky Train™, a new airport transit system, faced the challenge of creating a baffle ceiling that would deliver precision installation, robust performance, full accessibility, and a client-specific aesthetic. Collaborations with the architect, the subcontractor, and Hunter Douglas Architectural Projects led to a successful downstream implementation and installation of the new ceilings in what has become the city's most recent landmark

A client-specific design of extruded aluminum baffle profiles was attached that could span 24" without removing or lowering a single baffle. The large scale, baffle ceiling system became a main feature of the new landmark station. The baffle application incorporated a floating design in all directions, along with changes in baffle direction to accommodate transitions in pedestrian flow and space function. A key transition took place at the juncture of a 500" walkway from the light rail station to the airport transit station. While robust, given extruded aluminum baffles, the ceiling's precision element, reflecting the clean, precise nature of an automatic train operation, was equally important. This required manufacturing and field cutting of the baffles to maintain perfect alignment at floating perimeters (no trim elements), cuts around large columns, and most importantly, the key 1/2" reveal between baffles as no splice was used. The large-scale ceiling design highlighted many long runs of this reveal, one being the entire 500" length of the walkway connector.







Photography Bob Perzel

Project : PHX Sky Train™
Location : Phoenix, AZ, USA
Product : Baffle Ceiling System
Architect : HOK





Project : Galeria Mokotow shopping mall
Location : Warsaw, Poland
Product : Linear Solid Wood Grid
Architect : Sud Architekt

Galeria Mokotow

Warsaw, Poland

shopping mall





With integrated light system

The New Bus Terminal of Pamplona was looking for an aluminium ceiling easy to mount, demount and replace in case of damage. The chosen 30BD was customized into a colour chosen by the architect and in a modulation on 100 mm to integrate the light carriers. The ceiling was thought as vertical application too and the light system was taken down from the ceiling leaving the 30BD as a decorative element.



Project : Pamplona Bus Station
Location : Pamplona, Spain
Product : Linear 30BD
Architect : Manolo Blasco, Luís Tabuenca, Manolo Sagastume, Jesús Armendariz (ACXT)

Pamplona Pamplona, Spain *Bus Station*



DSM Materials Sittard, The Netherlands *Sciences Center*

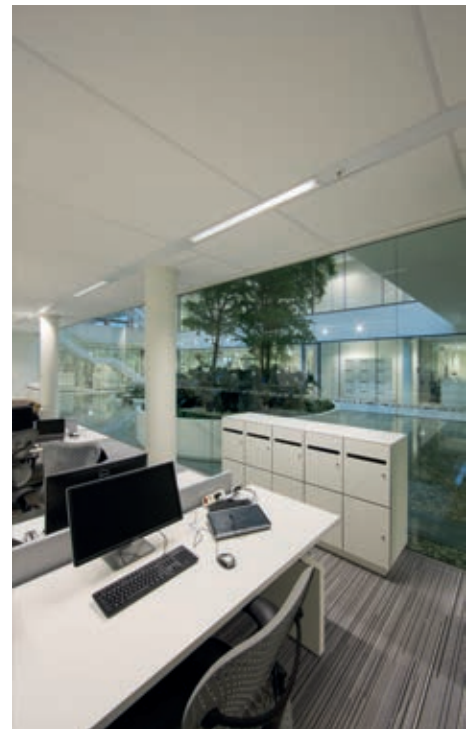


Opportunities for open innovation

The new DSM Materials Sciences Center at the Brightlands Chemelot Campus in Sittard-Geleen is an important base of research and development for Materials Sciences. For DSM Engineering Plastics this is also the main research center worldwide.

The Brightlands Chemelot Campus is a particularly industrial and innovation complex in life sciences and materials sciences. Brightlands Chemelot Campus is a breeding ground of renewal and offers opportunities for open innovation by the proximity of other (start-up) companies and research and educational institutions.

The building will have a capacity of approximately 420 employees. The Ceiling used here is 30BD CCA Acoustic+.







Project : DSM Materials Sciences Center
Location : Sittard-Geleen, The Netherlands
Product : 30BD CCA Acoustic+, Techstyle®- and XLnt Lay-On Panels
Architect : Broekbakema



BRUSSELS AIRPORT CONNECTOR

Zaventem, Belgium



Connector is a modern, state-of-the art building in the heart of the airport. Literally a connecting building it is also an architectural bridge between two different zeitgeists and styles. Connector itself is a contemporary, open, low-energy building with an eye to the future.

The 11,000 m² ceiling systems from Hunter Douglas are an integral part of the design.





Brussels Airport Connector Building • Zaventem, Belgium

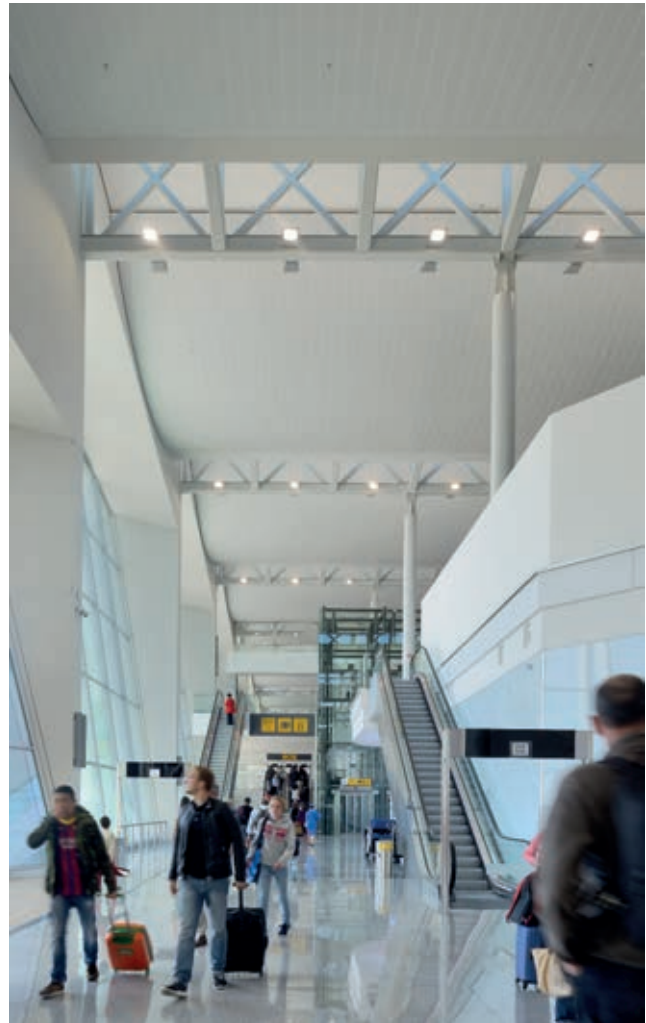
Connector is the building which links the passenger terminal to Pier A above-ground: it allows passengers to walk straight from the check-in desk to their gate in pier A. In the opposite direction, the building provides the arriving passenger with a smooth and agreeable passage to the baggage reclaim hall and the exit.



One of Connector's immediately striking features is the saw-tooth roof. Apart from aesthetic and technical considerations, this saw-tooth structure of the roof has the advantage of letting in more natural light, thus creating a pleasant environment as well as being energy-efficient.

With 25 screening lanes in Connector, Brussels Airport not only has the biggest screening platform in Europe, it is also the first airport to apply remote screening on a larger scale.

A striking feature here is the 'wing', an architectural feat that screens off various technical elements.



Project : Brussels Airport Connector
Location : Zaventem, Belgium
Product : Wide Panel 300C Curved and Wide Panel on Curved Carrier
Architect : Joint Venture CTHM



Project : Microsoft / Skype Head Office
Location : Prague, Czechia
Product : Stretch Metal & Wood Ceilings
Architect : S.H.S. - Mr. Lubor Sladký

Microsoft / Skype

Prague, Czechia

Head Office







Project : Hot Yoga Studio
Location : St. Petersburg, Russia
Product : Linear Solid Wood Grid
Architect : Elizabeth Naschekina



Hot Yoga *St. Petersburg, Russia* *Studio*



ONO *Pozuelo de Alarcón, Madrid, Spain*
office building

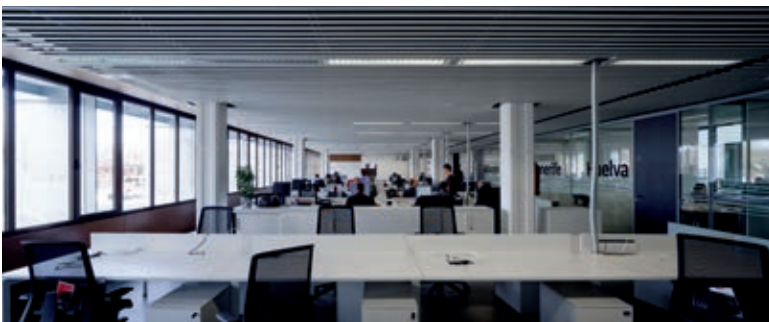


A decorative open light ceiling

This building was built as the new headquarters of the telecommunications company. The idea was a decorative open light ceiling easy to demount with the plenum full of installations in black. Only the lighting system is integrated in the ceiling.

The working areas are 30B in white and the corridors 30B in black. There are several meeting rooms with 30BD to give this areas a different character from the open working spaces.

Project : ONO office building
Location : Madrid, Spain
Product : Linear 30B
Architect : Ana Díaz González &
Javier Álvarez de Tomás (ACXT-IDOM)







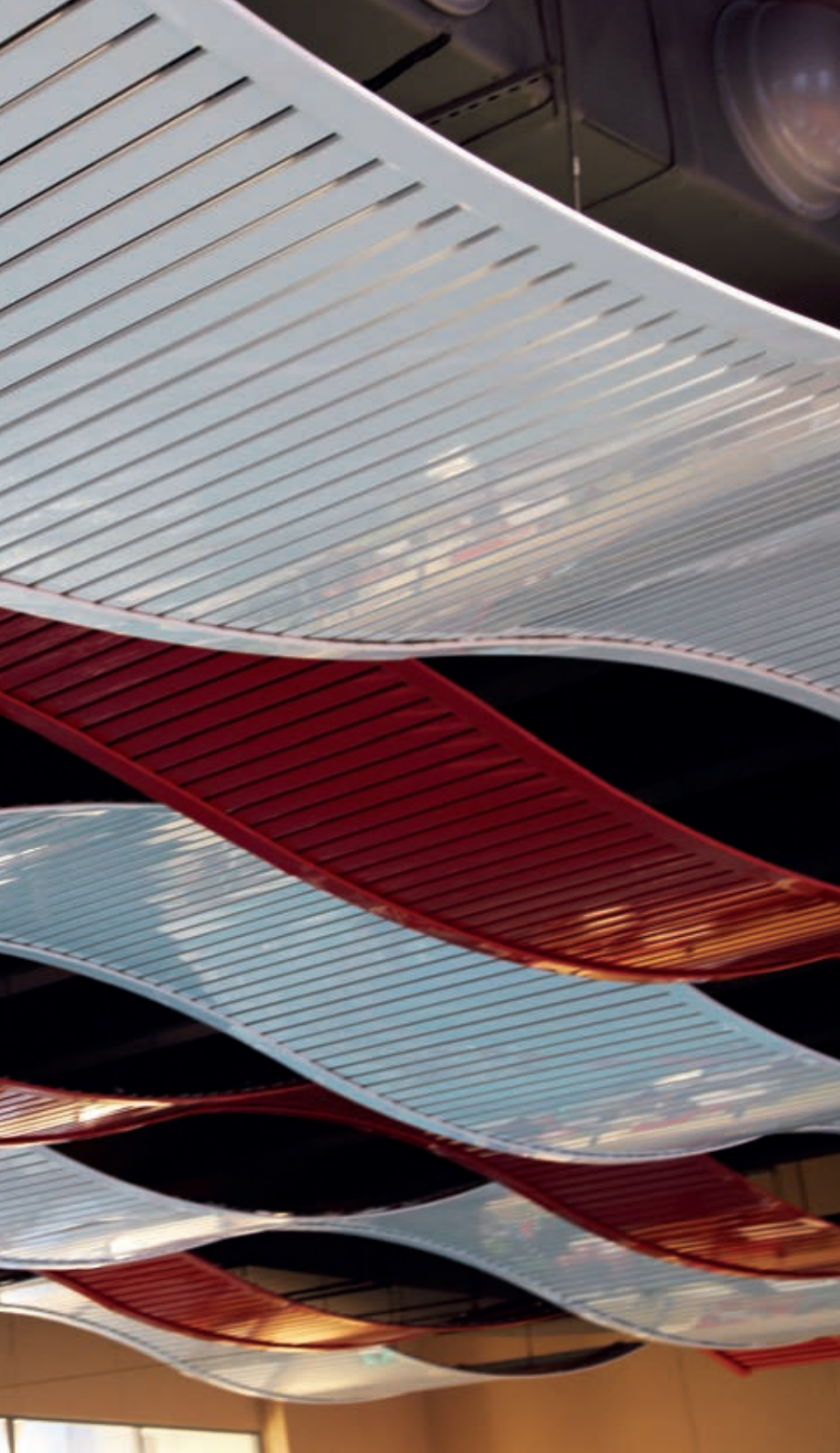
Project : NAU Health & Learning Center Arizona
Location : Flagstaff, AZ, USA
Product : Techstyle® Acoustical Ceiling
Architect : Cannon Design



NAU Health & Learning Center Flagstaff, AZ, USA



Fitness center *Moscow region, Russia*
World Class

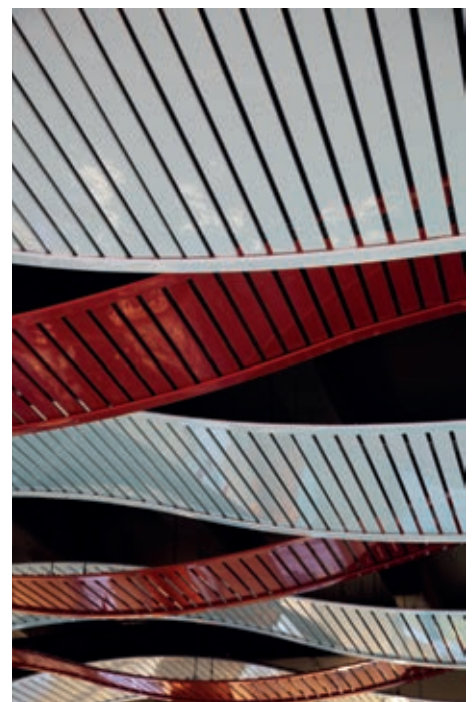


World Class - fitness club chain was founded by former fencer Olga Slutsker, who was inspired to open her first fitness centre in 1993. Today World Class gyms are trendsetters of fitness industry in Russia.

High quality and the most modern equipment, ecological air and water cleaning systems allow creating the comfortable environment for work.

All gyms are certified with a single standard of chain, not only in Moscow but also clubs in St. Petersburg, Yekaterinburg and other cities. Famous sportsmen, politicians, successful business-men and celebrities are members of these clubs. Pride of World Class Tverskaya is a swimming pool with a great designed ceiling and panoramic windows.

Project : Fitness center World Class Four Winds
Location : Moscow region, Russia
Product : Linear 80B with flexible carrier
Design and construction: Pridex







Project : Gdansk University Chemistry Faculty
Location : Gdansk, Poland
Product : Unigrig Ceiling
Architect : Warsztat architektury



Gdansk University

Gdansk, Poland

Chemistry Faculty

GLORIES MARKET

Barcelona, Spain



One of the shopping malls of Barcelona is renovating its image. On the last floor there is a market area where people can do their shopping and enjoy lunch or dinner. The idea is a mix of traditional wood ceilings in the shopping areas with the modern image of an impressive 20th-century shopping mall. American Red Oak was chosen in an impressive slat of 30 x 120 mm which guides the visitor through the different modern stands where the different brands sell their products.





Glories Market • Barcelona, Spain



A technical detail was the cutout of the slats round the quadrangular columns and the applied finishing profile made of Red Oak.



Project : Glories Market
Location : Barcelona, Spain
Product : Linear Solid Wood Grid
Architect : AHEC



European Arnhem, The Netherlands
Network Operator



Acoustics plays an important role

The European Network operator of the electricity transmission grid in The Netherlands and a large part of Germany is housed in a highly durable headquarters: the Mariëndaal Centre of Excellence in Arnhem. The property has been carefully integrated into the landscape. The four-storey office space is intended for 1050 flex work places. The predominantly transparent ground floor follows the natural topography and is the meeting area, acoustics plays an important role.

For the entrance and the corridor zones in the conference center was chosen for specially perforated tiles. The continuous pattern of the tiles has been specially developed in collaboration with Studio Groen + Schild. The ceilings are finished with a cradle 2 cradle powder coat finish.

The ceiling is circular purchased and housed in a PRP contract: all the materials go at the end of their life cycle back to the supplier for recycling.

Project : Headquarters European network operator
 Location : Arnhem, The Netherlands
 Product : Planks and Tiles
 Architect : Studio Groen + Schild







Project : Zayed Sports City
Location : Abu Dhabi, United Arab Emirates
Product : Linear 80B, wood finish
Architect : Sparch



Zayed Sports City

Abu Dhabi, United Arab Emirates



The Pavillion

Coldingham Bay, Scotland



Aesthetic qualities and longevity

The Pavilion at Coldingham Bay in the Scottish Borders is making waves as a modern, sustainable property that seamlessly fits into the surrounding landscape. Hunter Douglas has created a solid wood linear open ceiling for The Pavilion in Western Red Cedar, chosen for both its aesthetic qualities and longevity.

The wood has been fire treated and is suitable for internal and external applications. Internally the wood is interspaced with a black non-woven felt to provide some acoustic absorption, externally Hunter Douglas employed a powder coated black metal infill for durability and to prevent damage from wildlife.

Project : The Pavilion
Location : Coldingham Bay, Scotland
Product : WRC Solid wood linear interior ceiling and exterior vertical facade
Architect : Stuart Palmer, Studio SP





A fresh young look

Bennet is renovating since years a part of their shopping malls, and the renovation design is done by studio PCMR in Milan. In this case a mix of internal cladding and ceiling, has been used to transform the old fashion style of the 80's to a more modern minimalist and stylish appearance. The BXD ceiling panels are used in combination with LED lighting to highlight the shopping corridors, while the walls and the internal lining of the arcade are equipped with QuadroClad® panels in brushed silver and green. The escalators are covered with QuadroClad® 300 panels in green and together with the columns, this gives a fresh young look.



Project : Bennet Mall
Location : Milan, Italy
Product : BXD ceilings and QuadroClad® panels
Architect : Progetto CMR



Bennet Mall

Milan, Italy



Project : Carre Jaude
Location : Clermont Ferrand, France
Product : Wood Panels
Architect : DHA Architecture

Photos: GillesAymard Lyon

Carre Jaude

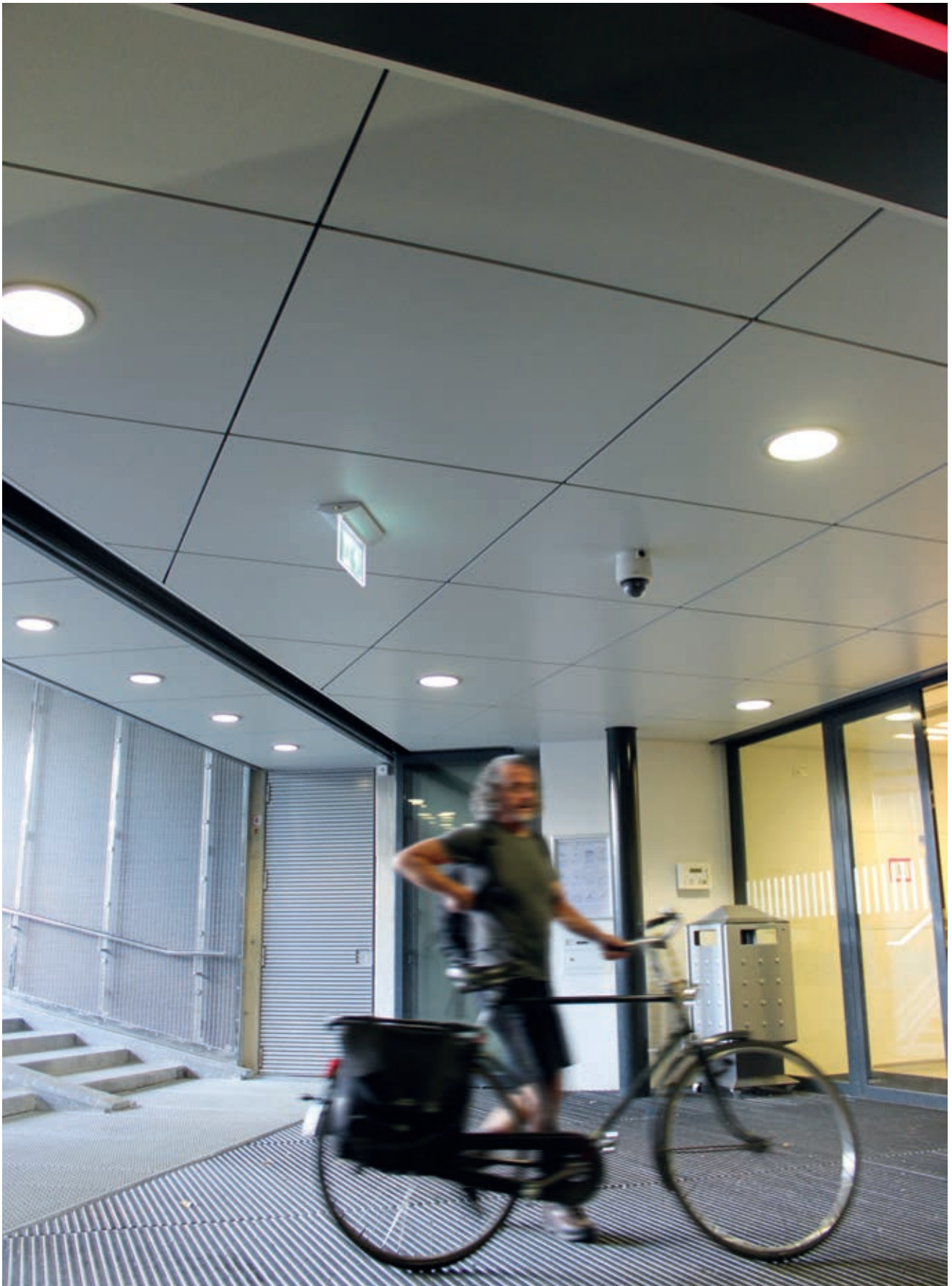
Clermont Ferrand, France

Shopping Mall



Stylish Wood ceiling solution for new shopping mall

The Carré Jaude shopping mall, in the city center of Clermont-Ferrand, is one of the vastest urban projects of city center in France. HunterDouglas® Wood Tiles become integrated perfectly into this new space, allying modernity and warm aspect of the place.



The bicycle parking with elevated public square forms a keystone within three large projects in Utrecht. The large and wide stairs on the south-west-side connect the lower Jaarbeurs square with the higher entrance to the city hall and the public transportation hub. This zigzag natural stone stairs holds trapezium shaped seating areas on which one can enjoy the afternoon sun between the ongoing rush of commuters. The bicycle parking is located underneath the stairs and public square and can hold up to 4.200 bicycles. (It is mainly used for people who travel in and out of Utrecht on a daily basis. The three level parking is equipped with a digital counting system which accurately shows the number of free parking places on each floor and individual row. The colourful floors with big digits and the large void below the stairs help to orientate while using the parking to park or find your bicycle.)



Project : Bicycle Parking Jaarbeursplein
Location : Utrecht, The Netherlands
Product : XLnt Panels
Architect : Kraaijvanger Architects



Bicycle Parking

Utrecht, The Netherlands

Jaarbeursplein



Subaru Sharjah, United Arab Emirates
Al Khoory Automobiles



Nonstandard undulating ceiling

The presented mock-ups convinced the architect and the customer that a nonstandard undulating ceiling was the right choice to highlight the cars in this showroom in a proper manner.

Project : Subaru, Al Khoory Automobiles
Location : Sharjah, United Arab Emirates
Product : Wide Panel 300C Curved, Perforated
Architect : M/S Al Baha Engg. Consultants







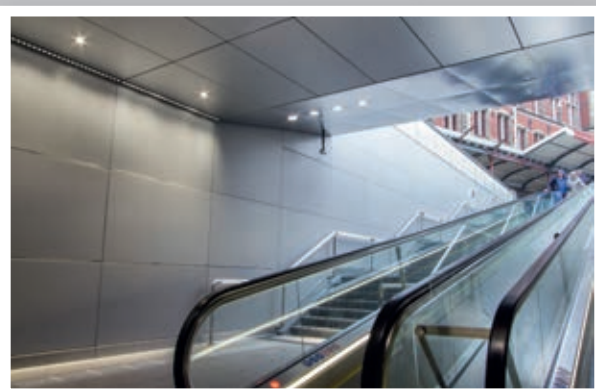
Project : Grimm-Welt, Museum
Location : Kassel, Germany
Product : Linear Solid Wood
Architect : kadawittfeldarchitektur



Grimm-Welt Kassel, Germany *Museum*

NOORD/ZUIDLIJN AMSTERDAM

Amsterdam, The Netherlands



The new Amsterdam metro North/South Line will have a trajectory between the stations Amsterdam-Noord (North) and Amsterdam-Zuid (South). This requires laying tubes beneath the historic central area of Amsterdam and erecting eight stations; three above ground and five below.





Noord/Zuidlijn, Amsterdam • Amsterdam, The Netherlands

To get enough daylight in the underground areas, as is characteristic for all the underground stations, reflecting walls and ceilings are integrated in the design. Therefore Hunter Douglas created aluminium panels with a high reflective value of 82 percent. In order to improve the acoustics, the ceiling panels are perforated.



The new interchange hall at Amsterdam Central station is one of the first parts of the North/South Line that is already in use. The underground area is accessible via three different entrances at the station square. When the North/South Line itself will be in use, passengers can change in this hall from/to the existing East Line, the new metro line, as well as the train station. The ceiling in the interchange hall consists of uniform, rectangular panels of 180 x 90 cm, that are placed in the running direction. These large panels contribute to overview and uniformity, so the travellers can easily orientate themselves.



Project : Noord/Zuidlijn, Amsterdam
Location : Amsterdam, The Netherlands
Product : XL nt Panels
Architect : Benthem Crouwel Architects



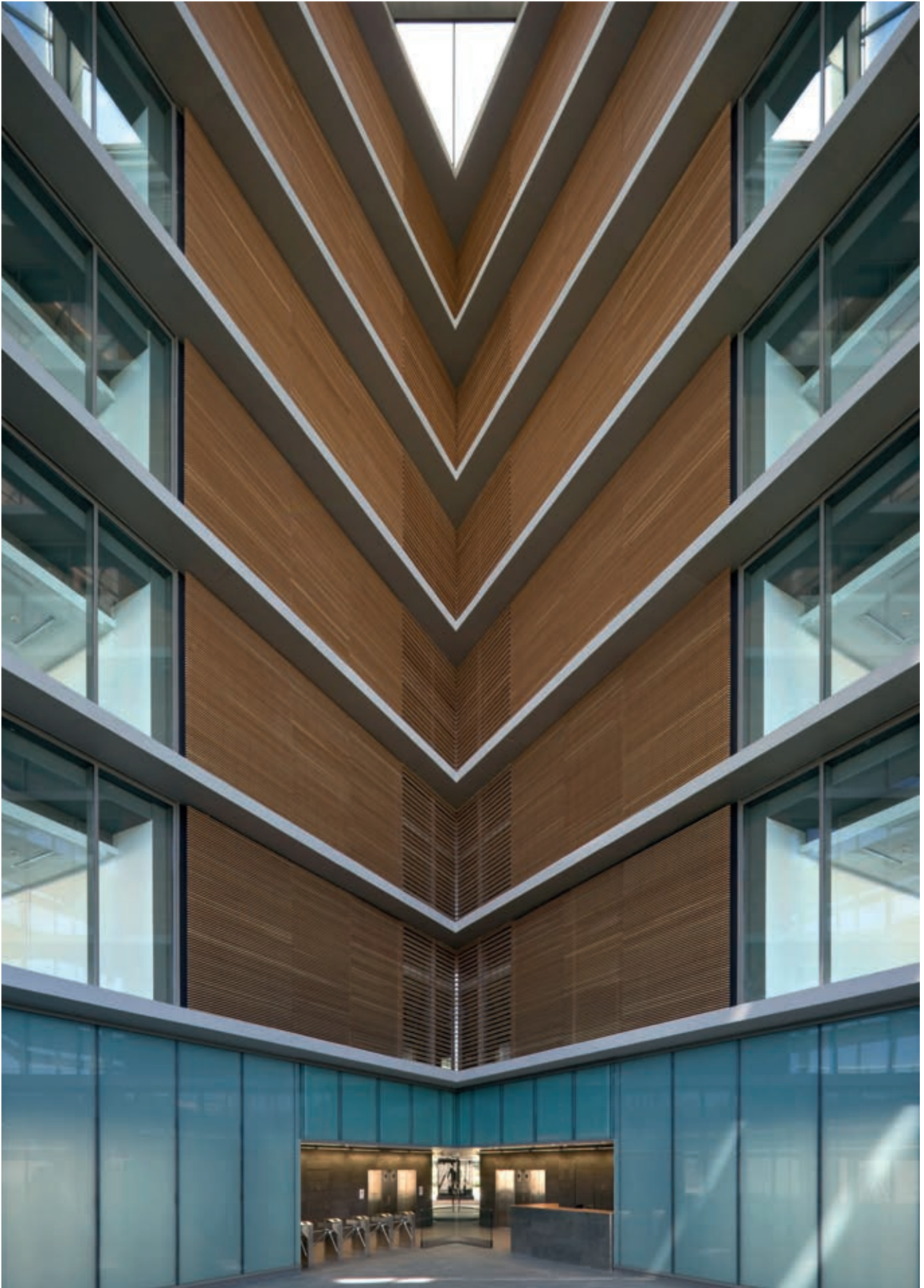
Photos: Gilles Aymard, Lyon



Project : Cristalia 4B
Location : Madrid, Spain
Product : Solid Wood Grid - wall application
Architect : Rafael de la Hoz

Cristalia 4B

Madrid, Spain



Six office floors getting an impressive image in the atrio.

The project belongs to a new office area in Madrid surroundings. The triangle shape of the building creates an impressive atrium where two interior facades stuck out. In the atrium corner, where the wood is installed, and the glass curtain is behind, the architect decides to use the material as light control and removes one slat out of three permitting the visibility to the atrium. Next to this, on the brick wall the grids have no removed lamel, the complete grid is installed.





Project : Centre Saint Jacques
Location : Metz, France
Product : Custom Tiles
Architect : Cabinet GH+A



Centre Metz, France *Saint Jacques*



Auchan *Mytischy, Moscow, Russia*
Shopping Mall



Auchan Russia strives to meet its customers' needs

Auchan set up shops in Russia in 2002. Since then, Groupe Auchan has rolled out several different formats in Russia.

Auchan Russia strives to meet its customers' needs in a whole variety of sectors, for example through projects such as the Auchan Sad garden centres, 'A-Mobile' mobile telephone plans, and online sales (since 2010), not to mention the wine store 'Château Chanau' which sells a wide range of quality wines and spirits, and cigars.

The Group is also present through its discount supermarket chain. This chain gives priority to an offering based on essential products. Hypermarket 'Auchan' in Mytischy includes 47 stores in the shopping gallery, 17 restaurants, dry cleaning, travel agency, banks and currency exchange.

Project : Auchan Shopping Mall
Location : Mytischy, Moscow, Russia
Product : Linear V200 Deco + Linagrid
Architect : Dominique Lemoine



ENTEL OFFICE BUILDING

Santiago, Chile



The meaning of a corporate building has a dual objective, represent the company's image today, and also the image it seeks to project into the future. It represents its present particular way of facing the world, its business culture; but also its future, that is, where it wants to go. In turn it must be understood and interpreted by both its regular users; part of the company, as the common public who come for services.

In this sense, the great challenge was choosing the materials that would make up the design of the new corporate building of Entel and being able to create a cozy, relaxed atmosphere, to facilitate new ways of working. And at the same time transmit a modern high-tech image vanguard. Be sufficiently noble and essential to withstand the test of time and fashions.



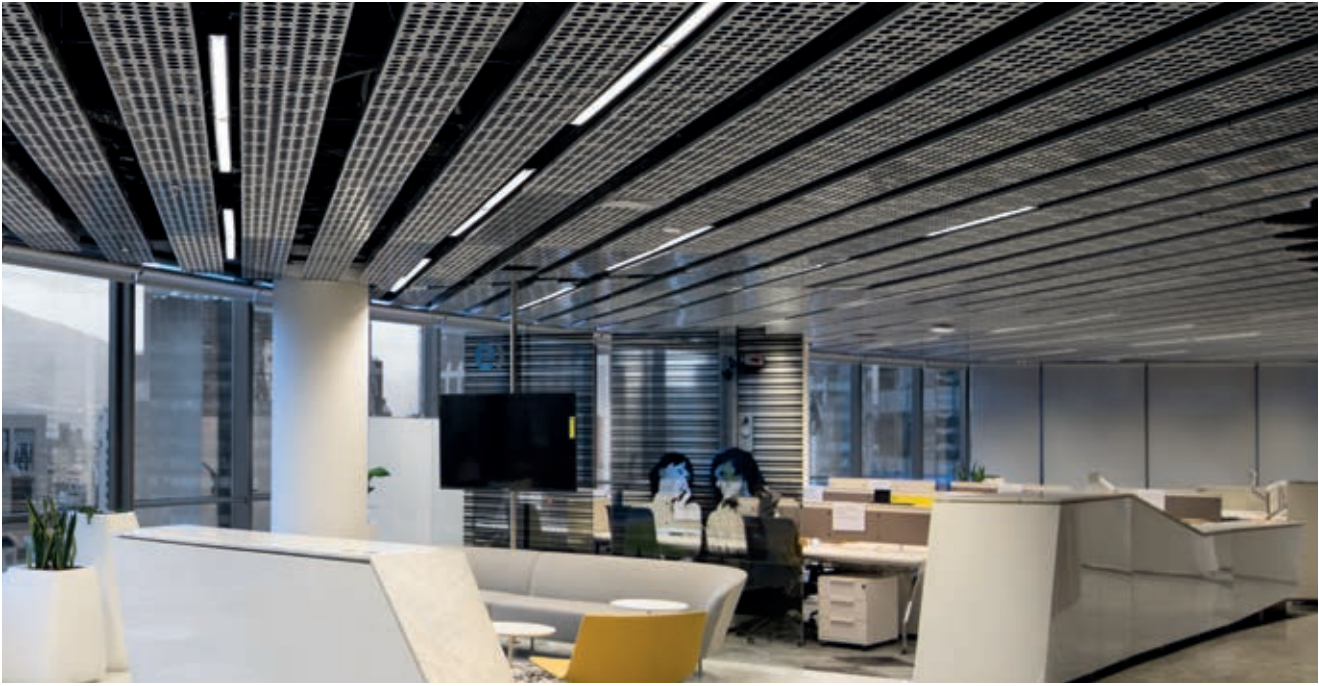


Entel Office Building • Santiago, Chile

The Plank ceiling, in a modular variable length is ideal for applications in corridors, providing a monolithic look. It is a suitable metal outdoor ceiling due to the system of profiles used in the installation, arising from its initial position. Planks perforated metal panels with acoustic fleece have a high sound absorption coefficient (NRC).



The ceiling chosen for this project manages to incorporate all these qualities, providing with its metallic finish, brightness and shine away from the materials commonly associated with sophisticated design.



Project : Entel Office Building
Location : Santiago, Chile
Product : Wide Panel
Architect : Sabbagh Architects



Leaseplan Milano, Italy *Branch Office*



Project : Leaseplan Branch Office
Location : Milano, Italy
Product : Multipanel BXD
Architect : Studio PCMR



BIRMINGHAM LIBRARY

Birmingham, United Kingdom



The new Library of Birmingham is one of Europe's largest new public libraries, housing some important historical collections in a striking and contemporary building.

The impressive 21st Century library in Centenary Square, which includes a recreation of a 19th Century room to accommodate one of the UK's most important Shakespeare collections, is a showcase of design and architectural innovation.

It includes bespoke solid wood ceiling systems by Hunter Douglas, one of the most prestigious timber-based projects the company has undertaken in the UK.

The Hunter Douglas systems incorporated in the groundbreaking new building include a wooden grill ceiling, finished in African Ayous, and Unigridd floating ceilings in black and white.





Hunter Douglas enhances prized collections at landmark new library

Patrick Arends, associate architect at Mecanoo, the Dutch company which has designed the new library, said it was important that the building provided a contemporary look and feel and yet fulfilled a very traditional function.



The Library of Birmingham is a BREEAM excellent rated building and although it is a transparent building, it maintains energy efficiency through the buffering capacity of the building mass and the atria. Sun shading and reflective materials within the facades block the harsh rays of the sun during the height of afternoon while allowing natural daylight into the interiors. The building also incorporates a mixed mode and natural ventilation strategy.

Centenary Square is the largest public square in the heart of Birmingham. Mecanoo's design transforms the square into one with three distinct realms: monumental, cultural and entertainment.

The Hunter Douglas ceiling systems are an integral part of the design of this striking interior and the overall aims of the project.



Project : Birmingham Library
location : Birmingham, United Kingdom
Product : Wood ceiling and Unigrig ceiling
Architect : Mecanoo



Poortvrije Amsterdam, The Netherlands
Passages Amsterdam



A hint of 1920s Paris

The IJ-passage of the Amsterdam Passages project is the first of two new, gate-free passageways through Amsterdam Central Station, in the future to be secured with public transport fare gates. The Amsterdam Passages are provided with a distinctive, elegant offer of shops and restaurants, laid out as a leisurely place well-separated from the noisy traveller crowd. The second passage on the east side, Amstel-passage, is expected to be completed at the end of 2016.

The Passages' design is based around creating a sumptuous and immersive experience through finely crafted details, ambient lighting and intimate ceiling heights. Glass and timber or steel shop façades run on either side of a generous concourse towards the IJriver. The Passages' ceilings consist of large surfaces left free from the façades, interspersed with remaining parts of the train station's canopy rafters. In this way also in the passages the railway ambiance keeps exerting its influence. These ceiling surfaces comprise specifically finished, raised narrow strips that withdraw the various devices for lighting, loudspeakers and sprinklers from sight. This leaves the other panels free from technical parts. Chrome details, marble cladding and dark materials evoke a romantic street at night, while the striking compressed-glass lighting ornaments around the columns add a hint of 1920s Paris.

Project : Poortvrije Passages Amsterdam
Location : Amsterdam, The Netherlands
Product : Hook On panels
Architect : Benthem Crowwel Architects /
Powerhouse Company / Merk X



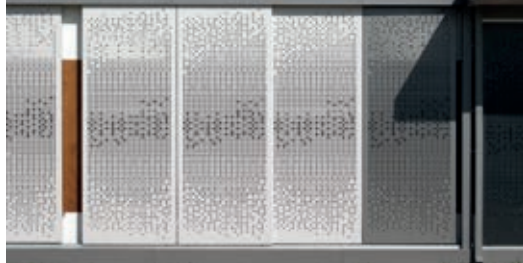
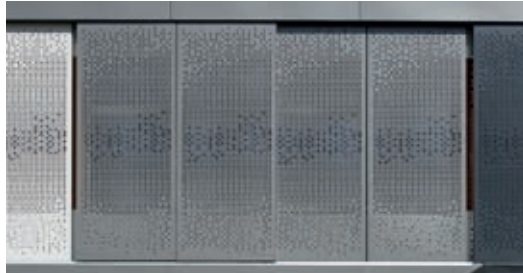
‘A well-designed solar-control solution will significantly enhance the comfort and well-being of a building’s occupants by managing natural light, thermal gain and reducing glare’

Sun Control

HunterDouglas Sun Control an energy efficiency comfort program



Design, Functionality and Comfort: Hunter Douglas provides architects the knowledge and expertise to integrate Sun Control Systems into the building architecture, enhancing the façade while providing highly effective sun protection. Modern buildings are so well insulated that they have very little need for heating. Heat gain caused by the sun creates a need for vast cooling capacities to ensure the comfort of a building's occupants. By combining integrated building solutions Hunter Douglas can optimise the energy efficiency and worker comfort.



HunterDouglas Sun Control an energy efficiency comfort program





Florentinum Prague, Czechia *Office Building*



A breathtaking scope

'The Florentinum Project is a fascinating opportunity for an architect, an opportunity to create a distinctive building intended to become elegant and timeless. For me, however, the most significant factor is the opportunity to create in the very centre of Prague two entirely new urban spaces, a public square and a garden, (in other words, public spaces) in places long neglected and which will now positively influence the face of the city.'

doc. Ing. arch. Jakub Cígler

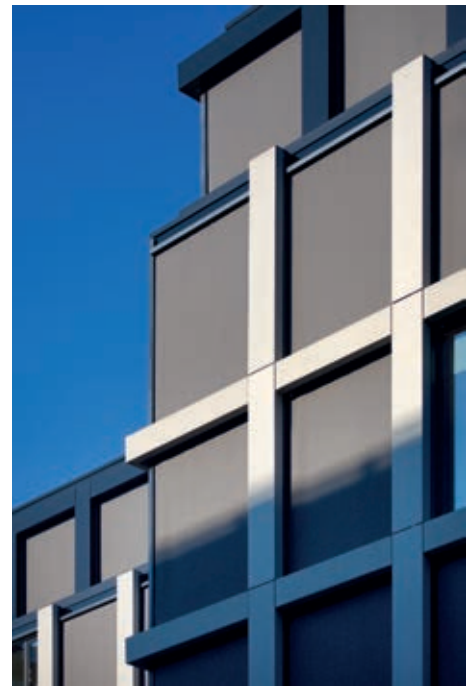
The goal of developing Florentinum is not only the construction of the building itself, but also the development of the surrounding area. Penta is in tune with the history of the area and sensitively incorporates the Florentinum project into existing structures. Despite its breathtaking scope, Florentinum is more a part of the city than merely a solitary structure. Florentinum is generous in its mass, but humble towards its surroundings. One of its most important messages is its timelessness and respect for the needs of space. For Florenc and the immediate vicinity, this aim means a fundamental step towards the overall renaissance of this area. Florentinum will therefore restore the historical significance and urban character to this interesting and important part of the city centre.

Project : Florentinum office building

Location : Prague, Czechia

Product : Exterior Screens & EOS®500 Roller Blinds

Architect : Cígler - Maráni Architects



The Florentinum received the LEED Platinum award, the highest possible level of international green building certification.





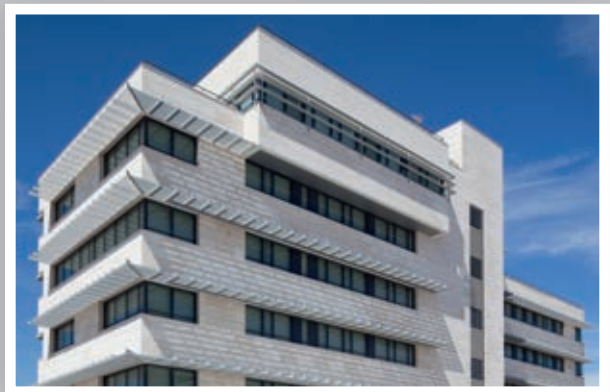
Project : Bialystok Technology Park (BPNT)
Location : Bialystok, Poland
Product : Motorized Sliding Shutters
Architect : Industria Project



Bialystok Bialystok, Poland *Technology Park*

INSTITUTE OF MATHEMATICAL SCIENCES

Madrid, Spain



The institute of mathematical Sciences with a lot of windows in the classrooms and offices was in need of a good sun control system. For this reason the architect decided that the best solution here was a sun louvre system consisting of 84R Luxacote® + SL2 carrier + rail SLR100 + end caps for all facades. This in order to make the whole building retain the same appearance.





Institute of Mathematical Sciences • Madrid, Spain



There are some vertical areas where the stairs are located which are covered with 100R due to the reason that substructure was accepted only left and right but not over the window, and 100R has a larger span.



Project : Institute of Mathematical Sciences
Location : Madrid, Spain
Product : 84R and 100R Panel System
Architect : Intecsa-Inarsa



Project : Kielce Fiar
Location : Kielce, Poland
Product : 132S Panel System
Architect : BSOP

Kielce Fiar Kielce, Poland

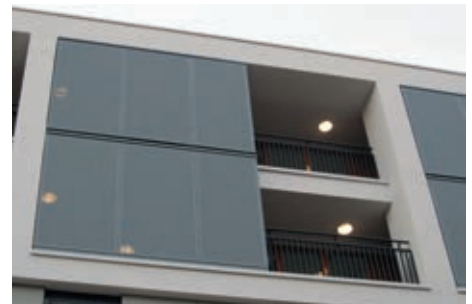




Balade Nursing home is a multifunctional accommodation with an area of 19,000 m² consisting of a primary school, a nursery, health center, meeting space, rental apartments, group homes, office space and underground parking.



Project : Balade, Nursing home
Location : Waalwijk, The Netherlands
Product : Motorised Sliding Shutters
Architect : DAT architecten



Balade Waalwijk, The Netherlands *Nursing home*

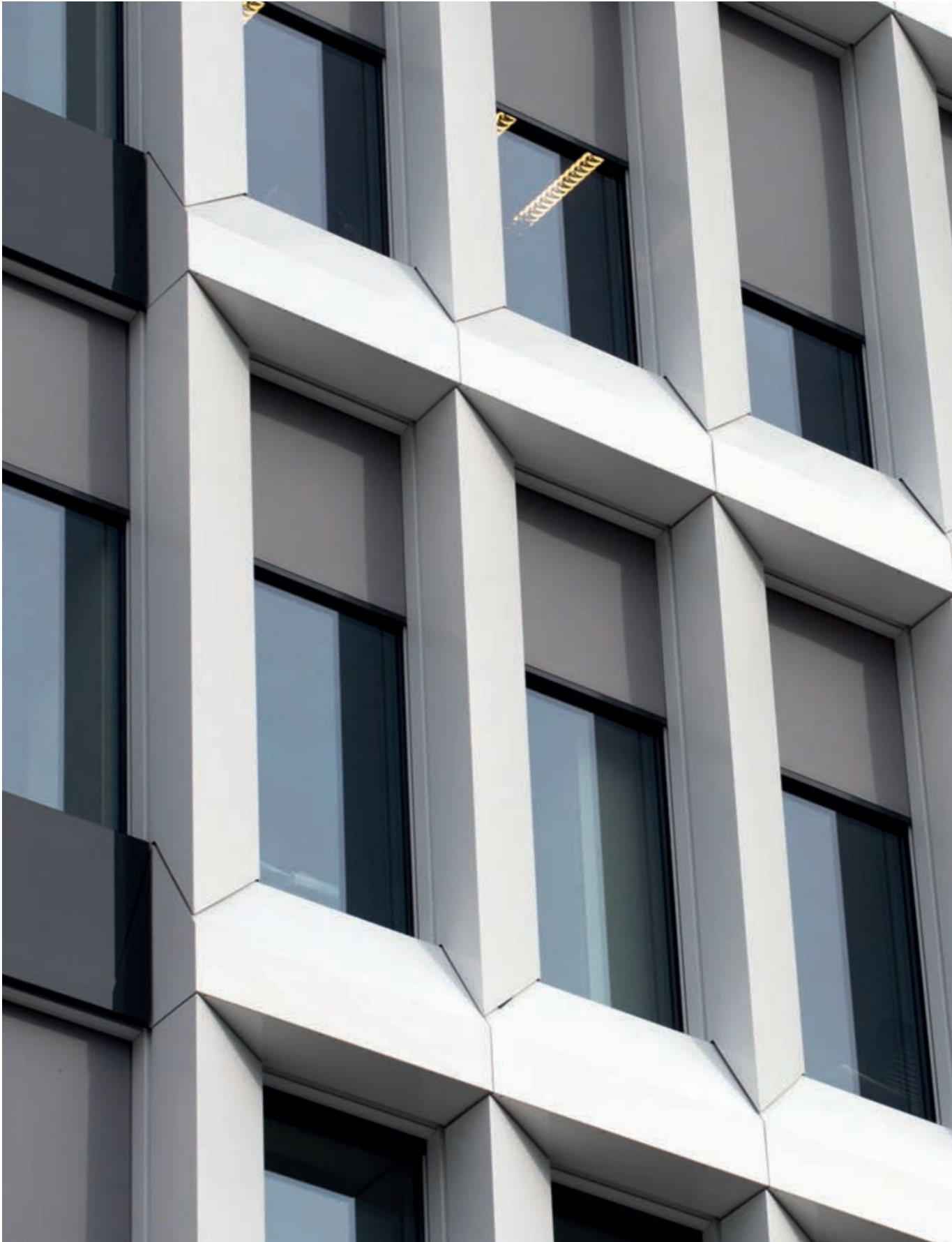
BUSINESS GARDEN OFFICE BUILDINGS

Warsaw, Poland



Warsaw Business Garden, a high standard office building complex, has been supplied with 1,900 pieces of Hunter Douglas motorised Outside Screen Roller Blinds. The intention of the architects was to integrate the roller blinds guiding channels with the façade mullions. This has been co ordinated by Hunter Douglas. Our blinds have been at the façade contractor's scope of works what allowed him to include the blinds directly at the window elements at the factory and install it as a complete set on the façade.





Warsaw Business Garden Outside Blinds integrated solution.

For this project 1,900 pieces of Hunter Douglas motorised Outside Screen Roller Blinds were installed for sun protection and providing good light comfort



Designed with modern trends as integrated part of the building envelope with no hardware visible, Hunter Douglas roller blinds presents light appearance and low impact at façade design but still taking care of the main function as sun protection and light comfort system.



Project : Warsaw Business Garden office buildings
Location : Warsaw, Poland
Product : External Roller Blinds
Architect : JSK



Brand new building decoration

Adresseavisen, the oldest Norwegian newspaper (first published in 1767), relocates to a brand new building decorated with 89 pictures from Adresseavisen's archive. This extraordinary sight turns a lot of people's heads on the Bakke bridge, which gives you a perfect view of the new building. The facade shows pictures of different events throughout the years. Like the visit of the British Queen Elizabeth to the Norwegian prime minister Per Borten. And the concert of the Sex Pistols at the Trondheim Student Society in the late seventies. The oldest picture dates back to 1956, and the stories of these pictures will be published on the newspaper's website as soon as they move in, in the summer of 2015. The pictures are actually screens that slide in front of the windows when there is a lot of sun coming in. This way the facade creates a new image because the shared designs in the pictures are joined together when covering the windows.



Project : Adressa Trondheim
Location : Trondheim, Norway
Product : Sliding Shutters
Architect : Arc Architects



Adressa Trondheim

Trondheim, Norway



Harsuf

Gaash, Israël



A stylish, dynamic look

On a cliff overlooking the Mediterranean beach, 100 meters from the shoreline, a new neighborhood has been built, planned by Pivko Architects Office. The challenge in this project was to create a rounded façade of motorized folding shutters, closing at 180 degrees while concealing the runners; thus, the appearance of a clean, uniform façade is created. The shutters covering the east southeastern façade; shade the apartments' interior and give a stylish, dynamic look to the building's exterior.

The shutters are built from aluminum frames covered with aluminum sheets, painted white. 12 different perforation patterns were designed by the architect to create non-uniformity among the panels. The shutters are motorized, operated by a central control system that also enables operation of each window separately. In the center of the project stands the lobby building, surrounded by decorative pools, covered on the entire height of the building, with a finish identical to that of the façade shutters.

The result is a breathtaking, dynamic white façade, blending in with the decorative pools on the one side, and the Mediterranean Sea on the other side.

Project : Harsuf
Location : Gaash, Israël
Product : Motorized Folding Shutters
Architect : Ilan Pivko Architects
Amit Mass (Associate architect)
Dror Brill (Architect project manager)



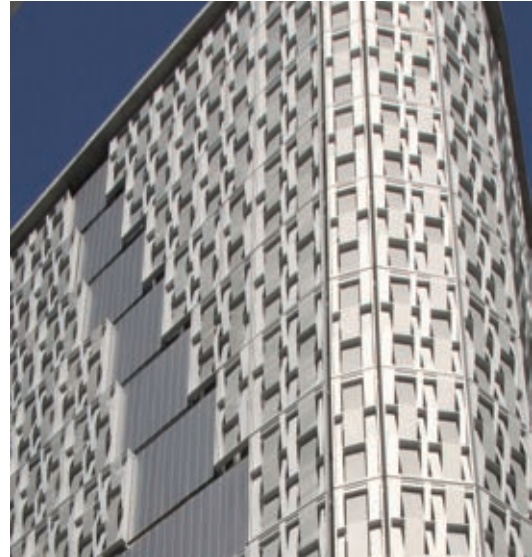
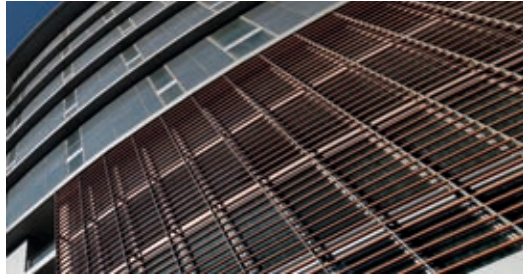
‘When every part of a building works together, comfortable, healthy and productive environments are created.’



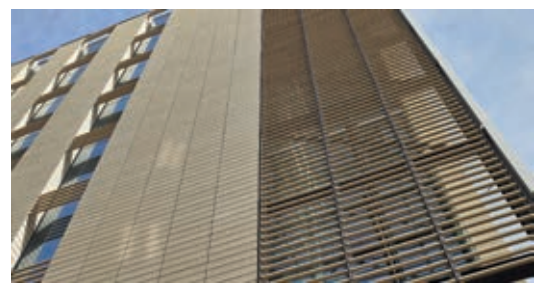
Design, Functionality and Comfort: Our façades offer an unparalleled degree of design freedom. The availability of custom shapes, curved and tapered panels, a variety of joint options and an extensive range of colours and materials ensures that our products' appearance are just as impressive as their performance. Not only do façades protect the building against noise and the sun, but they also shield walls from rain, wind and snow, keeping a more consistent interior temperature and humidity level.

Façades

HunterDouglas Façades an outstanding sustainable comfort program



HunterDouglas Façades an outstanding sustainable comfort program





Ster *Szczecin, Poland*
Shopping Mall



Transformation Shopping Centre Ster

Shopping Centre Ster has undergone a metamorphosis - both the interior and exterior were completely renovated. The Shopping Centre has a new logo and website was redesigned - all under the motto "Live in color".

The colorful stripes branding will feature prominently in the Ster campaign and aims to welcome customers in the world of Ster, where family, safety, comfort and entertainment are paramount.

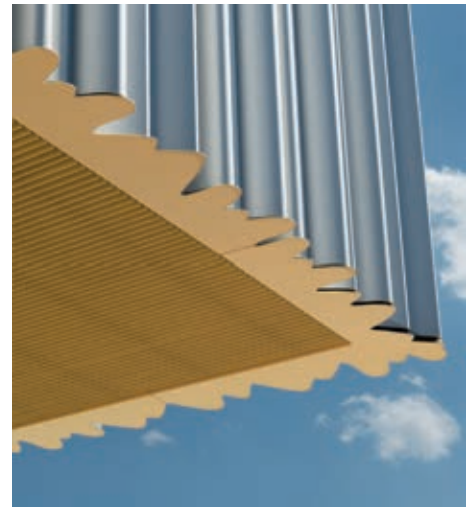
Project : Ster Shopping Mall
Location : Szczecin, Poland
Product : Single Skin 84R
Architect : Maas Architecten







Project : Primary School Gersag
Location : Emmenbrücke, Switzerland
Product : Linagrid Exterior
Architect : Büro konstrukt Architekten ETH SIA



Primary School

Emmenbrücke, Switzerland

Gersag



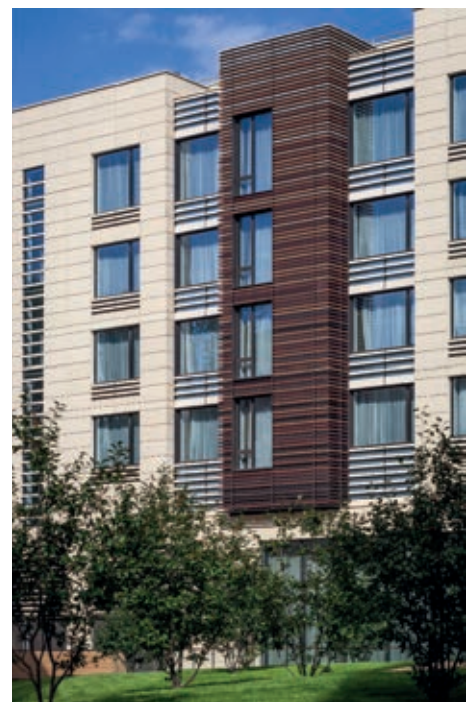
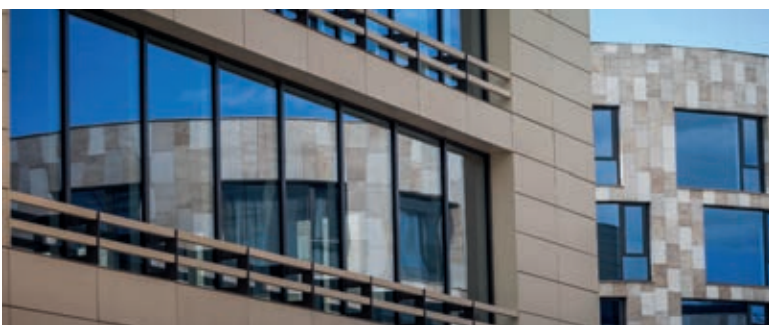
Hotel *Moscow, Russia*
DoubleTree by Hilton



Various sized windows, Terracotta Façades

Hotel DoubleTree by Hilton is located nearby the picturesque Khimki Reservoir, and guests of the hotel have the opportunity to admire it from the balconies. Deeper into the site the architecture becomes more vivid in comparison with the main building that overlooks the highway. Various sized windows, terracotta façade in different colours and orange balconies in combination with calm landscape solution.

Project : Hotel DoubleTree by Hilton
Location : Moscow, Russia
Product : NBK Ceramic
Architect : ADM Architectural Studio architects







Project : Andino Shopping Center
Location : Bogotá, Colombia
Product : NBK TERRART® Baquettes
Architect : Cure MDDG Ltda



Andino Bogotá, Colombia *Shopping Center*



Qatar National

Qatar, United Arab Emirates

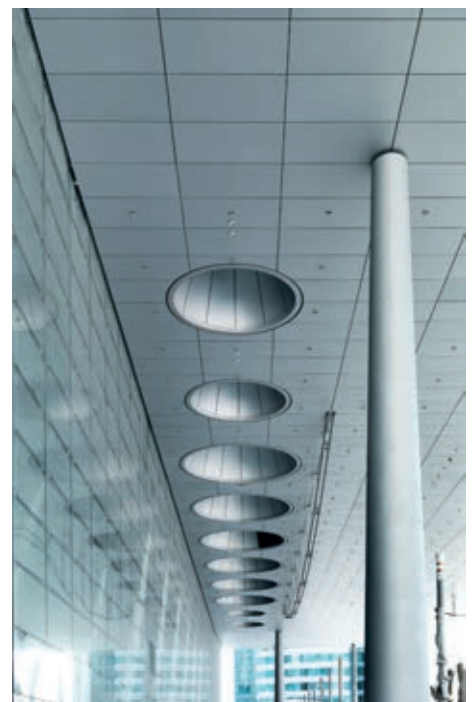
Convention Center



International venue design

The Qatar National Convention Centre (QNCC) a six-storey structure with a basement measuring about 250m long and 110m wide is a landmark building in the Middle East. The convention centre has advanced solutions and form a benchmark in international venue design. Apart from exhibitions and conferences, the convention centre will host local and international music and arts festivals, and international events.

Project : Qatar National Convention Center
Location : Qatar, United Arab Emirates
Product : QuadroClad® Panels
Architect : Murphy/Jahn Architects LLC



COMPENSAR SEDE SUBA

Bogotá, Colombia



Compensar the new headquarters is a project that is located one block from Av. Suba, in the city of Bogota. This comprehensive center offers welfare services and health for much of the population of northwestern Bogota. It is built on 18,000 square meters with an infrastructure of seven floors and two basements.

The design of this building is inspired by the special relationship 'water that covers'.



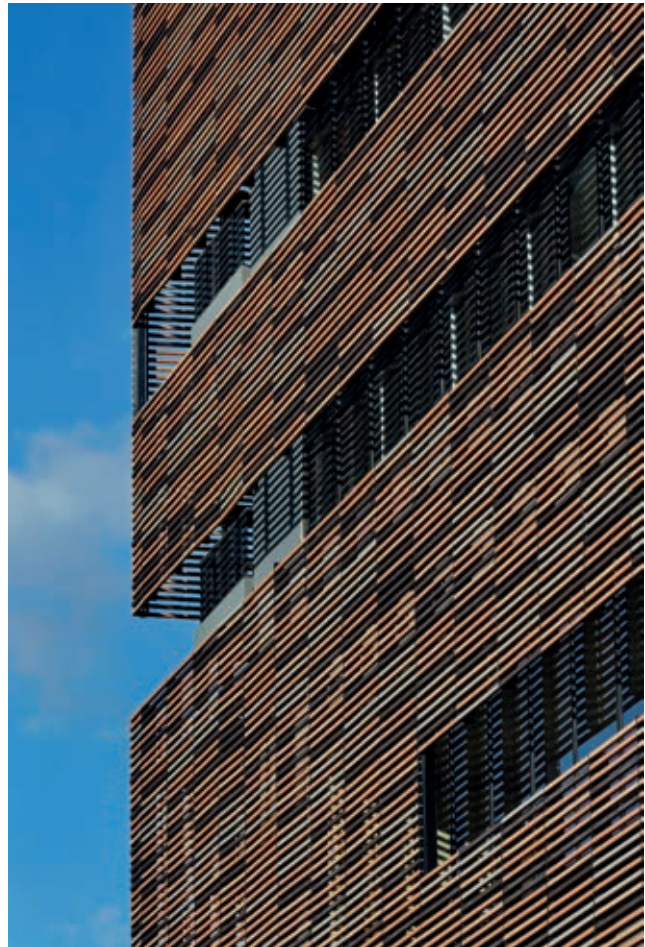


Compensar Sede Suba • Bogotá, Colombia

The new Compensar headquarters located one block from Av. Suba, in the city of Bogota.



The facade creates a dialogue with the context in which the building is implanted through a contemporary product as NBK Ceramic Coating. On the other hand the used Miniwave perforated ceiling, was presented as a functional and aesthetic solution for pools, where they managed to recreate a successful continuous surface acoustic insulation without breaking the aesthetics of the space.



Project : Compensar Sede Suba
Location : Bogotá, Colombia
Product : NBK TERRART® Baquettes
Architect : Daniel Bonilla



Corporate University
Moscow region, Russia
of Sberbank



High level of energy efficiency

The University is located in a very ecological region. From the South the University is surrounded by the forest, from the North - by Istra river. There are academic buildings and conference rooms, dormitories, apartments for professors and permanent housing for teachers, clubs and sports facilities on the territory of the Corporate University with a total area of 37,000 m². The University will conduct seminars and corporate training for company employees (about 250,000 employees) in order to enhance their skills and matching the corporate standards of the largest bank in Russia.

The most important technical requirements for choosing the materials are high level of energy efficiency and short construction period. The complex is fully equipped with energy-saving technologies. Even design tools made of QuadroClad® follow the idea of eco environment.

Project : Corporate University of Sberbank

Location : Moscow region, Russia

Product : QuadroClad 25

Architect : Erick van Egeraat





A playful picture of the entire facade

For the decoration of the car park of a new hotel / apartment complex in Miami, USA, the architect was looking for a very open product which can handle a high wind load of approximately 6000 N/m^2 . Hunter Douglas has translated the architect's desire for a new product called Auraweave. The product consists of an anodized aluminum edge and between profiles which have a filling of an anodized aluminum strip which in different widths, and with and without perforation in the frame is woven. This creates a playful picture of the entire facade. The perforation and the distance between the strip widths creates both day and evening a beautiful light display both in the garage and outside.



Project : MET 3 Hotel
Location : Miami, USA
Product : AuraWeave
Architect : Nichols Brosch Wurst Wolfe & associates, Inc.



MET 3 Hotel

Miami, USA



ZAC Chalbre

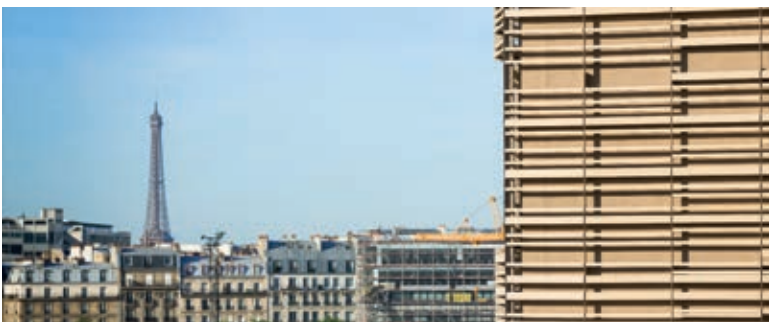
Parijs, France



A functional mix

In the 17th arrondissement of Paris, the architects at Atelier Philéas have designed an educational complex that is distinguished by both its design and functionality. The centrepiece of this ambitious urban planning project, which aims to give the district a visually striking, sustainable, contemporary and high-quality makeover, sets standards in urban development and fulfils the very highest ecological and energy-saving demands. Equipped with a 500-square-metre, roof-mounted photovoltaic system, geothermal heat exchanger and roof and wall greening, this sustainable educational complex almost meets passive house standard requirements. One of the most outstanding architectural features is undoubtedly the functional mix: regularity and uniqueness, individuality and community, surface and depth. Brown, earth-coloured towers, which look out over the complex like guard posts, rise out of the semibasements clad in vivid green.

The façades consisting of TERRART® Baguettes resemble branches or bamboo latticework. Their open, sometimes outwardcurving arrangement not only allows light and air to penetrate the interior, but also ensures that they provide excellent protection against sunlight in front of the openings. The compact yet airy cladding, which is both warming and allows the sunlight through, does not obscure the view outside. "Great views and sunshine for everyone, wherever they are" – this goal set by the architects can be clearly seen throughout the complex, not just in the façades.







Project : ZAC Chalbres
Location : Paris, France
Product : NBK TERRART® Baguettes
Architect : Atelier Phileas

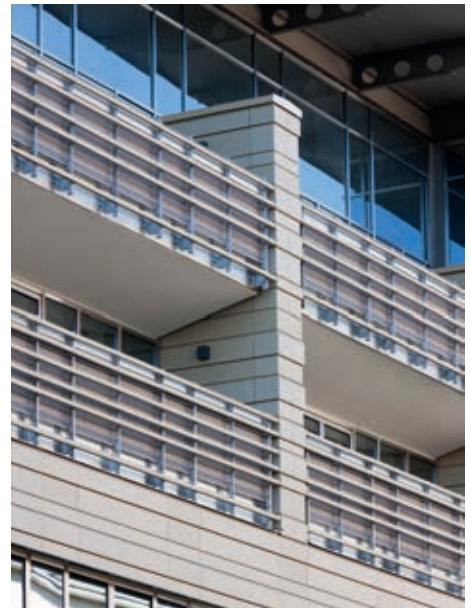




The Bundesbank branch in Leipzig has been given a facelift. After the old natural stone elements had started to come loose from their fixtures to the point where they were threatening to fall off, the entire rear-ventilated curtain façade was revamped. The façades now boast a uniform, natural texture and a colourfulness that captivates with its detail-rich form. TERRART® Large elements and TERRART® Custom variants with different profiles and cuts, some in a baguette design, lend the building a sense of lightness, with their interplay bringing it to life. The ceramic glazing creates special, additional accents. The building's unmistakable landmark feature, the 'key' on the roof, has been left untouched.



Project : Bundesbank
Location : Leipzig, Germany
Product : NBK TERRART® Large and Custom elements
Architect : Anderhalte



Bundesbank

Leipzig, Germany



Project : Edificio Banco BCI
Location : Santiago, Chile
Product : NBK TERRART® Light and Baguette sun louvers
Architect : A4 Arquitectos

Edificio *Santiago, Chile* *Banco BCI*



Unique, tailored solution

The NBK TERRART® system can accommodate the finest design details in shape, colour, texture and glaze for unique, tailored solutions. Both facades in this project are made of vertical strips of NBK panels and NBK baguette. These helped to control the light and helped saving energy.

NOVO NORDISK HEADQUARTERS

Copenhagen, Sweden



The new company headquarters of the Danish pharmaceutical company Novo Nordisk, which leads the way in the treatment of diabetes, comprises two buildings situated in a green and attractive landscape. The larger, cylindrical office building has six stories and covers a total area of 32,500 m² (including a 13,000 m² underground car park). This circular form, with no beginning and no end, gives the impression of perfect equilibrium, acts as a visual focus and contributes to low energy consumption.

The other, wedge-shaped building has four stories and covers a total area of 17,700 m². Possessing its own unmistakable appearance, it blends in perfectly with the hilly landscape and acts as a complement to the neighbouring circular building. The wedged geometry creates a continuous sequence of lower, polygonal buildings, providing the perfect setting for the unifying centrepiece formed by the circular main building.





Novo Nordisk Headquarters • Copenhagen, Sweden

The design was inspired by the complex structure of the insulin molecule, with its helical structure reflected in the roundness of the building and, in the building's interior, in the dynamic white balconies in the atrium.



The architecture aims to create a dynamic environment in which people can meet up and so promote synergies between employees from different specialist fields and between employees and guests from all over the world. This was the vision behind the plans for the new company headquarters. The exteriors of the new buildings are characterised by their clear and simple lines. Like brightly shining strips, the terracotta cladding made from white, glazed ceramic panels adorns the façade, follows its curves and spiral loops with the utmost precision and contributes significantly to the building's striking visual impact.



Project : Novo Nordisk Headquarters
Location : Copenhagen, Sweden
Product : NBK TERRART® Large
Architect : Henning Larsen



Project : Haven Point
Location : South Shields, England
Product : NBK TERRART® Large and Custom elements
Architect : LA Architects Limited

Haven Point

South Shields, England



An extraordinary overall appearance changes constantly with the light and evokes water and rippling waves.

This new swimming pool and leisure complex in the north east of England is clad in 21,600 individually prepared terracotta elements. The alternating convex and concave elements, which are coated in a special glazing, create an extraordinary overall appearance that produces reflections, changes constantly with the light and evokes water and rippling waves. The architects were inspired by the design of the Trumpf staff canteen in Ditzingen (Barkow Leibinger).





Project : Renovation of Bank of Spain office building
Location : Ciudad Real, Spain
Product : 200F Multiple Panel Façade
Architect : Ruiz-Larrea & Asociados



Bank of Spain

Ciudad Real, Spain

Office Building



Villa Materada

Istria, Croatia

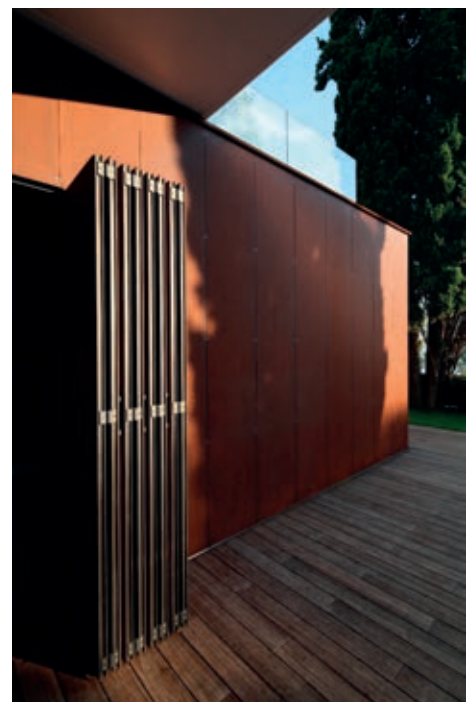


Functional and aesthetic

A single family holiday house. The wish was a recognizable, residential house that satisfies functional and aesthetic demands, a visual imperative of luxury and comfort. Basic used materials are corten, aluminium, wood and glass.

The aluminum façade on the first floor, roof and exterior ceilings are lined with HunterDouglas® MPF Panels in white. Ground floor façade is covered with ventilated Corten panels including the Folding Shutters with Corten infill, also provided by Hunter Douglas.

Project : Villa Materada
Location : Istria, Croatia
Product : Multi Panel Façade and Folding Shutters
Architect : Mr. Davor Matekovic

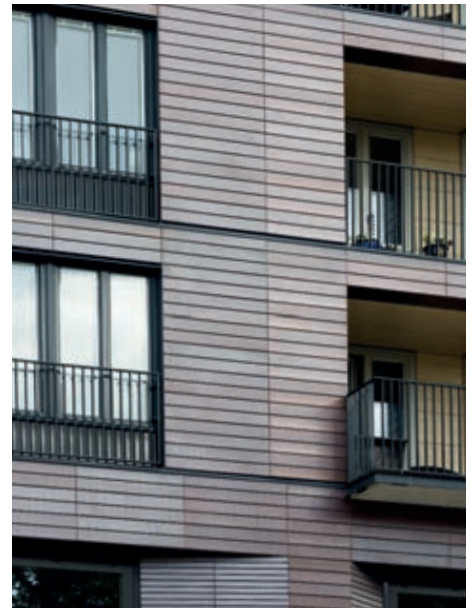




Large-scale renovation and expansion work in the heart of Malmö have resulted in an elegant complex that makes this district even more attractive. This residential and commercial building complex comprises a number of interlinked buildings accommodating a shopping centre on the ground floor as well as office and residential complexes on the upper floors. The light natural stone used on the lower floors stands in contrast to the dark, engobed terracotta on the upper façades, which, with its sintered surface, exudes a distinct metallic effect that changes depending on the light. The slimline profile of the TERRART® Mid elements creates a distinctive structure.



Project : Nya Triangeln
Location : Malmö, Sweden
Product : NBK TERRART® Mid elements
Architect : FOJAB



Nya Triangeln

Malmö, Sweden



Acibadem *Istanbul, Turkey*
Universitesi



Eye catching Brick-red ceramic

On a surface area measuring a total of 26,000 square metres, on the Asian side of Istanbul, an impressive new university campus has been developed. Opened only recently, this university is dedicated to training doctors and medical personnel, and conducts high-quality research and scientific work in health care.

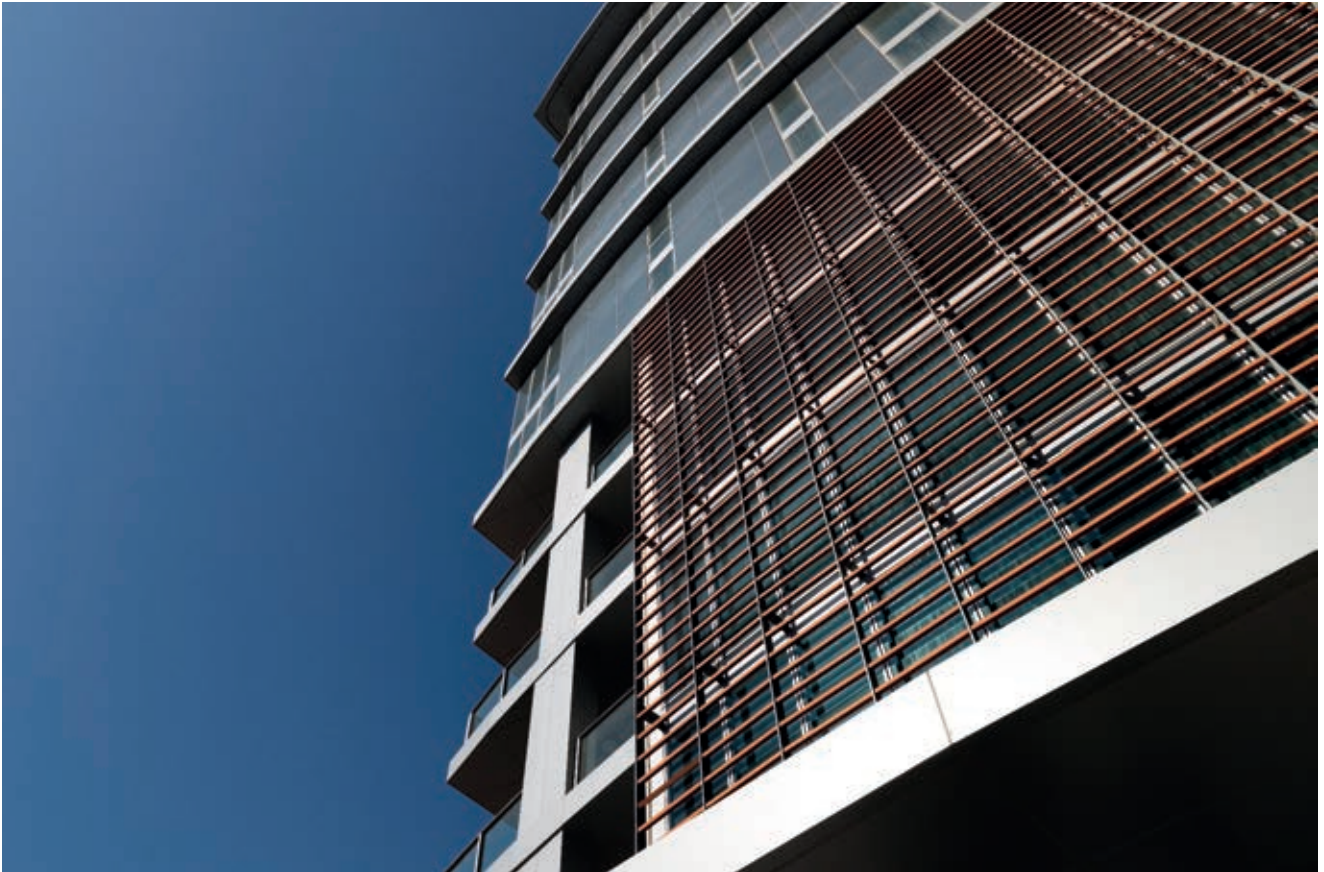
Uniform design features form an architectural 'bracket', bringing research areas, teaching buildings and student living areas together. In addition to the large glass areas, the brick-red ceramic cladding is eye catching and can be found on all campus buildings in different forms and layouts.

TERRART® Baguettes form delicate vertical blinds in front of the windows and offer protection from the sun, while TERRART® Light elements fill the closed façade surfaces, or frame and structure parts of the fronts. In some places, they also incorporate striking mosaics that form a decorative pattern running through all buildings - these are influenced by historic Turkish motifs as an expression of cultural identity. The building has been certified as a low-energy construction - the ceramic façade making its own contribution to this.

Project : Acibadem Universitesi
Location : Istanbul, Turkey
Product : NBK TERRART® Baguettes
Architect : Forum Studio







Project : Al Bustan complex
Location : Abu Dhabi, United Arab Emirates
Product : NBK TERRART® Baguettes and sun louvers
Architect : RMJM



Al Bustan complex

Abu Dhabi, United Arab Emirates



Regional Blood Centre

Warszawa, Poland



Designed to raise people's awareness

The regional blood centre is equipped with a blood donation unit, refrigeration areas, laboratories and a conference centre and forms the first section of a complex that will accommodate, among other things, a specialist blood diagnostic centre. The building geometry is inspired by the function of a blood centre: the interface between biology, symbolised in the round elements, and technology, as expressed through the strictly geometric and straight-line elements. The building envelope is clad with ceramic elements, with small ceramic tiles on the ground floor and glazed ceramic panels on the upper floors. More than 2,000 ceramic elements were used for the upper floors, vertical blinds and - a first in Poland - curved panels.

The hollow ceramic elements - TERRART® Baguette - not only shield against light and heat but also conceal the large and complex technical equipment housed in the roof. The deliberately vibrant colour scheme chosen for the building envelope is visually captivating and designed to raise people's awareness of blood donation. To create a sense of lively irregularity three different shades of red were used. The colour scheme symbolise the preciousness of blood, which is also frequently called the 'gift of life'. FAAB Architektura was founded in 2003 by Adam Bialobrzewski and Adam Figurski, who head a team of highly experienced architects and engineers. Numerous awards in national and international architectural design competitions are testament to the outstanding work of this architect's office. Within the field of architectural building planning, FAAB specialises in office buildings, high-rises, hospitals and health centres, cultural and sports centres as well as hotels and resorts.







Project : Regional Blood Centre
Location : Warszawa, Poland
Product : NBK TERRART® Panels and Baguettes
Architect : FAAB Adam Białobrzęski, Adam Figurski



Product	Project	Country	Section	Page
Window Coverings				
Wood Venetian Blinds	Al Muraqabat Park Hyatt Apartments	United Arab Emirates	Residential	16 - 17
Custom Roller Blinds	Kauffman Center for Performing Arts	North America	Leisure	18 - 23
EOS®500 Roller Blinds + External Venetian Blinds	Siemens office in Russia	Russia	Offices	24 - 25
Roller blinds and Linear Ceiling 30BD	Federal Grid Company of Unified Energy System office	Russia	Offices	26 - 27
Motorized Duette® Shades	Ritz Carlton Hotel	United Arab Emirates	Hotels	28 - 29
Roller blinds and Linear Ceiling V200	Nowy Styl Group Office	Russia	Offices	30 - 31
Motorized- and Tess Sloped Roller Blinds	Masdar Institute	United Arab Emirates	Education	32 - 33
Venetian Blinds	White Gardens Office Center	Russia	Offices	34 - 39
EOS®500 motorized Roller Blinds	Hub Group headquarters	USA	Offices	40 - 41
EOS®500 Roller Blinds	Nationwide Insurance	USA	Offices	42 - 43
EOS®500 Roller Blinds	InterContinental Dubai Marina	United Arab Emirates	Hotels	44 - 45
Ceilings				
Linear Multipanel	Centre Permis	France	Education	50 - 51
Linear Solid Wood Grid	Conference Room+B3 Spanish Parliament	Spain	Offices	52 - 53
Custom extrusion ceiling	Spoorzone Delft	The Netherlands	Transportation	54 - 55
Multi Panel Wood print	Chanhassen High School	USA	Education	56 - 57
QuadroClad® Baffle Ceiling	Tesco Letňany Refit	Czechia	Public places	58 - 59
Baffle Ceiling System	Shanghai Metro Line 13	China	Transportation	60 - 61
Linear 225C- and Cell Ceilings	'De Rotterdam', Business Centre	The Netherlands	Commercial building	62 - 67
30BD and 80B Ceiling with 3 different Wood finishes	EKZ Mall	Germany	Public places	68 - 69
Techstyle® Islands	Büwe Tefbau AG	Switzerland	Offices	70 - 71
Techstyle® Acoustical Ceiling	University of Arizona Health Science Education	USA	Education	72 - 73
Linear 80B	Vitesse Trainingscentrum	The Netherlands	Leisure	74 - 75
Linear 30B + 80B/180B customized colour	Canarias Airport, New Terminal	Spain	Transportation	76 - 81
V100 ceiling with Woodfinish	Vodafone	The Netherlands	Retail	82 - 83
Stretch Metal Ceiling	Narodowy Football Stadium	Poland	Leisure	84 - 85
Linear Solid Wood Grid	Calivornia Freizeitbad	Germany	Leisure	86 - 87
Baffle Ceiling System	PHX Sky Train™	USA	Transportation	88 - 91
Linear Solid Wood Grid	Galeria Mokotow shopping mall	Poland	Public places	92 - 93
Linear 30BD	Pamplona Bus Station	Spain	Transportation	94 - 95
30BD CCA Acoustic+, Techstyle®- and XLnt Lay-On Panels	DSM Materials Sciences Center	The Netherlands	Education	96 - 99
Wide Panel 300C Curved and Wide Panel on Curved Carrier	Brussels Airport Connector	Belgium	Transportation	100 - 105
Stretch Metal & Wood Ceilings and EOS®500 Roller Blinds	Microsoft / Skype Head Office	Czechia	Offices	106 - 107
Linear Solid Wood Grid	Hot Yoga Studio	Russia	Leisure	108 - 109
Linear 30B	ONO office building	Spain	Offices	110 - 111
Techstyle® Acoustical Ceiling	NAU Health & Learning Center Arizona	USA	Education / Health	112 - 113
Linear 80B with flexible carrier	Fitness center World Class Four Winds	Russia	Leisure	114 - 115
Unigridd Ceiling	Gdansk University Chemistry Faculty	Poland	Education	116 - 117
Linear Solid Wood Grid	Glories Market	Spain	Public places	118 - 123
Planks and Tiles	Headquarters European network operator	The Netherlands	Offices	124 - 125
Linear 80B, wood finish	Zayed Sports City	United Arab Emirates	Health	126 - 127
WRC Solid Wood Linear interior ceiling and exterior vertical facade	The Pavillion	Scotland	Residential	128 - 129

Product	Project	Country	Section	Page
BXD Ceilings and QuadroClad® panels	Bennet Mall	Italy	Public places	130 - 131
Wood Panels	Carre Jaude Shopping Mall	France	Public places	132 - 133
XLnt Panels	Bicycle Parking Jaarbeursplein	The Netherlands	Transportation	134 - 135
Wide Panel 300C Curved, Perforated	Subaru, Al Khoory Automobiles	United Arab Emirates	Showrooms	136 - 137
Linear Solid Wood	Grimm-Welt, Museum	Germany	Leisure	138 - 139
XLnt Panels	Noord/Zuidlijn, Amsterdam	The Netherlands	Transportation	140 - 145
Solid Wood Grid - wall application	Cristalia 4B	Spain	Offices	146 - 147
Custom Tiles	Centre Saint Jacques	France	Public places	148 - 149
Linear V200 Deco + Linagrid	Auchan Shopping Mall	Russia	Public places	150 - 151
Wide Panel	Entel Office Building	Chile	Offices	152 - 157
Multipanel BXD	Leaseplan Branch Office	Italy	Offices	158 - 159
Linear Solid Wood Ceiling	Birmingham Library	United Kingdom	Public places / Education	160 - 165
Hook On panels	Poortvrije Passages Amsterdam	The Netherlands	Public places	166 - 167
Sun Control				
Exterior Screens & EOS®500 Roller Blinds	Florentinum office building	Czechia	Offices	172 - 173
Motorized Sliding Shutters	Bialystok Technology Park (BPNT)	Poland	Offices	174 - 175
84R and 100R Panel System	Institute of Mathematical Sciences	Spain	Education	176 - 181
132S Panel System	Kielce Fiar	Poland	Offices	182 - 183
Motorised Sliding Shutters	Balade, Nursing home	The Netherlands	Health	184 - 185
External Roller Blinds	Warsaw Business Garden office buildings	Poland	Offices	186 - 191
Sliding Shutters	Adressa Trondheim	Norway	Offices	192 - 193
Motorized Folding Shutters	Harsuf	Israël	Residential	194 - 195
Façades				
Single Skin 84R	Ster Shopping Mall	Poland	Public places	200 - 201
Linagrid Exterior	Primary School Gersag	Switzerland	Education	202 - 203
NBK Ceramic	Hotel DoubleTree by Hilton	Russia	Hotels	204 - 205
NBK TERRART® Baquettes	Andino Shopping Center	Colombia	Public places	206 - 207
QuadroClad® Panels	Qatar National Convention Center	United Arab Emirates	Offices	208 - 209
NBK TERRART® Baquettes	Compensar Sede Suba	Colombia	Health	210 - 215
QuadroClad 25	Corporate University of Sberbank	Russia	Education	216 - 217
AuraWeave	MET 3 Hotel	USA	Hotels	218 - 219
NBK TERRART® Baguette	ZAC Chalbre	France	Education	220 - 223
NBK TERRART® LARGE and CUSTOM elements	Bundesbank	Germany	Offices	224 - 225
NBK TERRART® Light and Baguette sun louvers	Edificio Banco BCI	Chile	Offices	226 - 227
NBK TERRART® LARGE	Novo Nordisk Headquarters	Sweden	Offices	228 - 233
NBK TERRART® LARGE and CUSTOM elements	Haven Point	United Kingdom	Leisure	234 - 235
200F Multiple Panel Façade	Renovation of Bank of Spain office building	Spain	Offices	236 - 237
Multi Panel Façade and Folding Shutters	Villa Materada	Croatia	Residential	238 - 239
NBK TERRART® MID elements	Nya Triangeln	Sweden	Residential / Commercial building	240 - 241
NBK TERRART® Baguette	Acibadem Universitesi	Turkey	Education	242 - 243
NBK Ceramic Terracotta Baguettes and Terracotta Louvers	Al Bustan complex	United Arab Emirates	Residential / Commercial building	244 - 245
NBK TERRART® Panels and Baguette	Regional Blood Centre	Poland	Health	246 - 249



Hunter Douglas products and solutions are designed to improve indoor environmental quality and conserve energy, supporting built environments that are comfortable, healthy, productive, and sustainable.



100% recyclable





www.hunterdouglascontract.com

© Registered trademark - a HunterDouglas® product Pats. & Pats. Pend. - Technical data subject to change without notice. © Copyright Hunter Douglas 2016. No rights can be derived from copy, text pertaining to illustrations or samples. Subject to changes in materials, parts, compositions, designs, versions, colours etc., even without notice.

A publication of Hunter Douglas



HunterDouglas 