

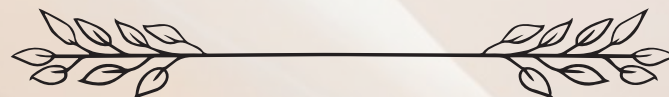


Pembekelebek's[®]

Luxury Kids Fashion

THE HEIRLOOM ELEGANCE

Capsule Collection

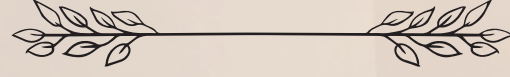


www.pembekelebeks.com

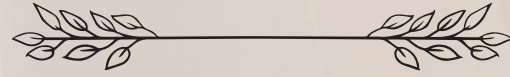


Niřanca Mah. Trkeli Cad. No:83/A Fatih İstanbul / Trkiye

Pembekelebek's[®]
Luxury Kids Fashion



**WELCOME TO
OUR ENCHANTED JOURNEY**



www.pembekelebeks.com

Niřanca Mah. Trkeli Cad. No:83/A Fatih İstanbul / Trkiye

PARTNERSHIP IN ELEGANCE



*As your partner in luxury children's fashion,
we curate exclusive collections blending
timeless elegance with premium craftsmanship.*

*We build lasting partnerships—ensuring
consistent quality and reliable sizing
to elevate your boutique's reputation.*

*From a streamlined ordering process to dedicated support,
we guarantee a seamless experience.*



Pembekelebek's®
Luxury Kids Fashion

THE
HEIRLOOM ELEGANCE
SS '26 Capsule Collection



THE LARA

Vintage Lace Waterfall & Cameo
Embellished Infant Gown

Model Code | 9173



The Lara Vintage Lace Waterfall & Cameo Embellished Infant Gown

Model Code | 9173

Embodying angelic grace, The Lara gown is a vision of pure innocence. Its tiered waterfall skirt of delicate vintage lace flows into a whimsical Point D'Esprit tulle hem, accented by a romantic dusty rose sash. A charming antique cameo brooch and matching pearl headband ensure a flawless heirloom impression, crafted for baby's first memories.



Size & Fit Info

- Available Sizes: 9-36 Months
- Model is 24 months old.



THE VERA

Vintage Contrast Point D'Esprit Tulle & Cameo Brooch Gown

Model Code | 9171



The Vera Vintage Contrast Point D'Esprit Tulle & Cameo Brooch Gown

Model Code | 9171

A dramatic vision of vintage romance, The Vera redefines classic elegance. Its contrasting dark Point D'Esprit tulle skirt creates a mysterious, dignified silhouette. Adorned with a striking antique-gold Cameo brooch and delicate lace trims, it is an aristocratic masterpiece elegantly crafted for unforgettable impressions.



Size & Fit Info

- Available Sizes: 3-8 Years.
- Model is 5 years old.

Pembekelebek's
Luxury Kids Fashion

THE MILA

Ostrich Feather & Sheer Puff Sleeve
Tulle Gown

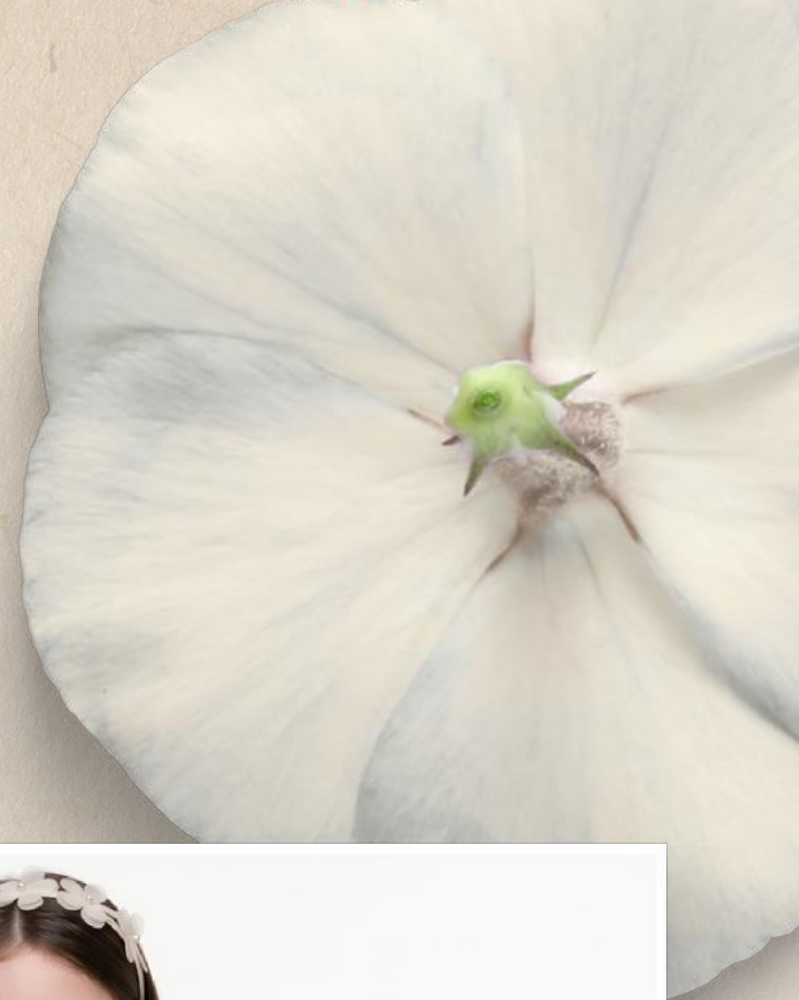
Model Code | 12028



The Mila Ostrich Feather & Sheer Puff Sleeve Tulle Gown

Model Code | 12028

A vision of majestic elegance, The Mila redefines heirloom style. Its dramatic ostrich feather waistline creates a breathtaking silhouette beneath voluminous sheer organza puff sleeves. Adorned with scattered pearls and delicate floral appliques, it offers an ethereal lightness, crafted for unforgettable memories.



Size & Fit Info

- Available Sizes: 3-8 Years
- Model is 5 years old.

Pembekelebek's®
Luxury Kids Fashion



THE YANA

Flocked Tulle & Lace Embellished
Satin Dress

Model Code | 3409



The Yana Floral Flocked Tulle & Lace Embellished Satin Dress

Model Code | 3409

Embodying the pure innocence of vintage romance, The Yana is a masterpiece of subtle elegance. Crafted from premium soft jacquard with a delicate floral weave, it features a romantic 3D floral sash that perfectly cinches the waist. The gentle puff sleeves and intricate lace trim along the hemline add an unforgettable, heirloom-quality charm.



Size & Fit Info

- Available Sizes: 3 - 8 Years
- Model is 5 years old.



THE ZENA

French Lace & Point D'Esprit
Embellished Tulle Dress

Model Code | 9148



The Zena French Lace & Point D'Esprit Embellished Tulle Dress

Model Code | 9148

A masterpiece of aristocratic charm, The Zena intertwines history with modern grace. Its delicate French lace bodice flows beautifully into a whimsical Point d'Esprit tulle skirt. Accented by a romantic 3D floral sash and a structured satin bow, it ensures a flawless impression from every angle, crafted for timeless memories.



Size & Fit Info

- Available Sizes: 6-10 Years
- Model is 7 years old.

THE ALBA

Ethereal Ruffled Tiered Tulle &
Back Bow Gown

Model Code | 3279



The Alba Ethereal Ruffled Tiered Tulle & Back Bow Gown

Model Code | 3279

The crown jewel of the collection, The Alba embodies ethereal grace. Its delicate ruffled shoulders and organza puff sleeves frame an exquisite visage. Tiered tulle layers with lace trims create a dreamlike skirt, contrasted by a vision floral belt and a grand back bow. It is meticulously crafted for unforgettable star moments.



Size & Fit Info

- Available Sizes: 3-8 Years
- Model is 5 years old.

THE CORA

Ethereal Organza & Scattered Pearl
Floral Dress

Model Code | 12035



The Cora Ethereal Organza & Scattered Pearl Floral Dress

Model Code | 12035

A vision of ethereal enchantment, The Cora dress is a fairytale in powder pink organza. Its bodice features a unique daisy-textured lace, leading to a multi-layered skirt adorned with scattered pearls and delicate applied floral appliques. With soft puff sleeves, it is crafted for timeless memories.



Size & Fit Info

- Available Sizes: 2-6 Years
- Model is 5 years old.



Pembekelebek's[®]

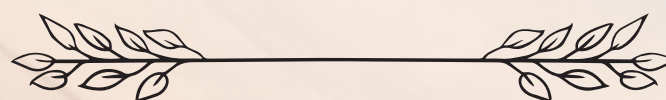
Luxury Kids Fashion

A Note on Editorial Imagery



The visual atmospheres and modeling in this catalog are digitally crafted to showcase the artistic vision of our physical garments.

While every effort is made to accurately represent our designs, slight variations in color, texture, or fit may occur in actual production.



Art Direction & Digital Production by Nova Solai

www.novasolai.com



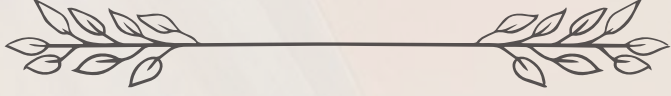
NOVA SOLAI

DIGITAL GROWTH & CREATIVE AGENCY

Pembekelebek's®

Luxury Kids Fashion

Contact Us



pembekelebeks@hotmail.com

+90 534 770 29 79

Follow Us



www.pembekelebeks.com

@pembekelebeks

Visit Us



Nişanca Mah. Türkeli Cad. No:83/A Fatih
Istanbul / Türkiye



© 2026 Pembekelebek's
All rights reserved.

No part of this catalog, including images, texts, and designs, may be reproduced or used without prior written permission.