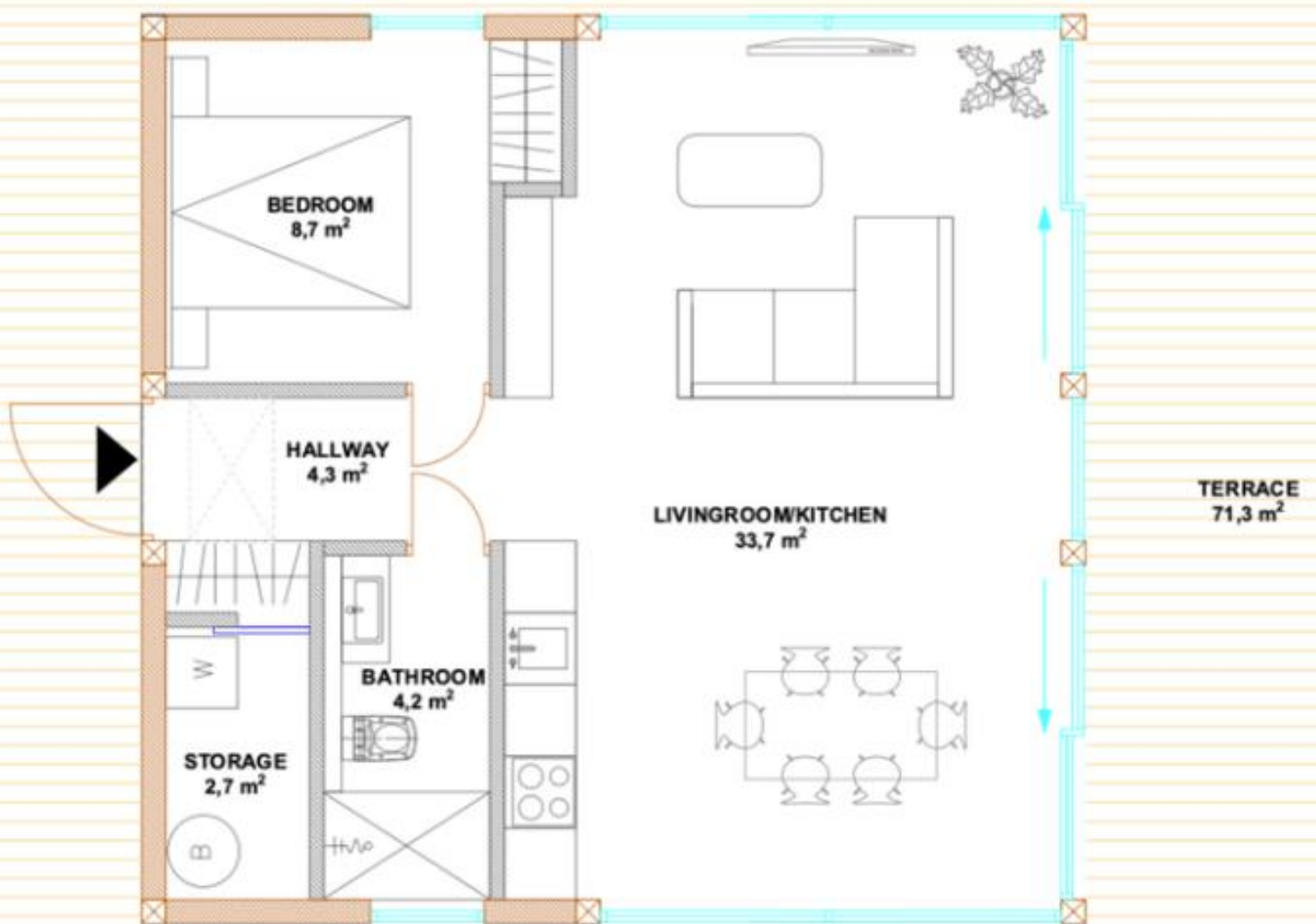


PILE FOUNDATION 1 BEDROOM (+ LOFT)



ODYL 1



1. Corridor wardrobe can be extended. Door location chosen by the client (add-on).
2. Technical room on first floor
3. Entrance possible from the front as well as the terrace

STAGES



We can install the house up to a certain stage, according to your needs.



STAGE 1

**“Ready from outside”
Structurally ready**

House ready from outside, starting from foundation. Includes internal walls, excludes all other internal works.

€107,640+ VAT

Installation time: 7 days

STAGE 2

**“Keys to the house”
Fully finished**

All exterior and interior works finished. “Keys to the house”. All works included from foundation.

€164,450 + VAT

Installation time: 20 days

Including:

- Production, materials
- Installation

Excluding (location and plot specific):

- Foundation
- Machinery rental (crane)
- Logistics
- Accommodation
- Project changes
- Add-ons

€107,640 + VAT

Installation time: 7 days

STAGE 1

EVERYTHING FINISHED FROM THE OUTSIDE

This option is suitable for clients who have contacts and know-how on interior works. ODYL would be responsible and give warranty for house structures (10 year warranty).

1. Glulam and CLT structures
2. Exterior and interior oil finishes
3. Opening fillings (windows, door)
4. Insulation (roof, floor, exterior walls)
5. Exterior finishes
6. Roof and hidden rain gutters
 - Roof choice: stone or steel



Stage 1 add-on Recommended

Terrace
(standard 71.6m², 50 cm from ground)

The house would visually look better + general usability is greater.

€8,395 + VAT

Stairs = **€195.5/m + VAT**

€164,450 + VAT

Installation time: 20 days

STAGE 2

“KEYS TO THE HOUSE”

House ready for interior design and moving in.

1. Electrical, plumbing works
2. Heating/cooling, ventilation
3. Finishes on walls and ceilings
4. Fully equipped bathroom
5. Wooden-felt hanging ceilings
6. Parquet (oak)
7. Interior doors
8. Silicon finishes



Stage 2 add-on Recommended

LED Lights (interior and exterior)

An excellent solutions for “mood lights”.

€4135 + VAT





ODYL 1 + LOFT

ODYL 1 Bedroom option can have an added **13.4m² LOFT.**



STAGE 1

CLT Intermediate floor for the LOFT

€2060+ VAT



STAGE 2

- CLT intermediate floor
- Parquet or carpet
- Solid wooden ladder
- Glass barrier

€6240+ VAT





HYBRID SOLAR SYSTEM STANDARD FULL BLACK ROOF PANELS



1. 7.8 kW full black solar panels, one side of the roof
2. 8 kW hybrid, 3-phase inverter (HV or LV)
3. 30 kW energy storage batteries, 3-phase (HV or LV). +/- kW would change the cost
4. MODBUS R2 Smart Inverter controller (optional €360)
5. Installation
6. Measurements and audit (if not required to be done by a local company)

High voltage system

€17,040 + VAT

*30 kW storage included

Low voltage system

€16,330 + VAT

*30kW storage included.

Not included: Transportation, team logistics and accommodation (2 days, 2 people), extra works and requirements if required by local law (e.g. a fire door or local audit).

100% OFF-GRID SYSTEM REQUIRES AN IN DEPTH ANALYSIS.

OTHER ADD-ONS



We offer value added elements which clients can choose based on their needs.



Full niche mirror

€436 + VAT



Niche stone cover

€340 + VAT



Full glass door

€ 1369+ VAT



**Storage room
sliding door**

€1438+ VAT



Bedroom wardrobe

€1628+ VAT



**Hot-tub
terrace integrated
(electric heating)**

€7475+ VAT

PLOT SPECIFIC



The below costs are excluded from the offer, predictive and differ per country and location, but are a reference point to calculate full total cost.



Foundation
(screw piles, house)

€5000 + VAT



Crane rental
(3 days)

€4000 + VAT



Logistics
(choices / access)

€ 4500 - €9000 + VAT



Team logistics
(4-6 people, depends on the stage)

€2000 - €5000 + VAT



Accommodation
(depends on choices 7-25 days)

€2000 - €8000 + VAT



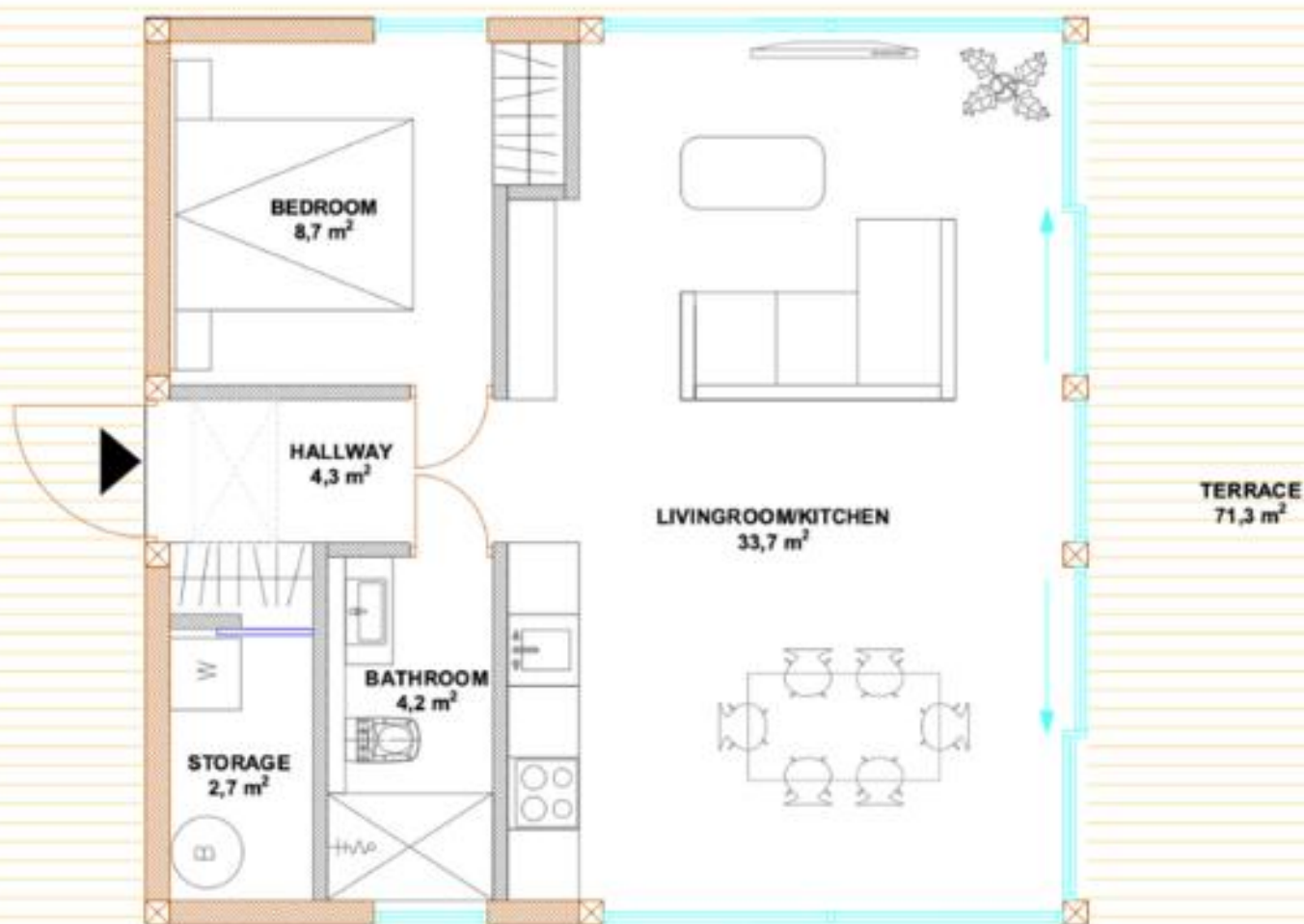
Additional works
Re-projecting, special wishes.

€50/h + VAT

SLAB FOUNDATION 1 BEDROOM (+ LOFT)



ODYL 1



1. Corridor wardrobe can be extended. Door location chosen by the client (add-on).
2. Technical room on first floor
3. Entrance possible from the front as well as the terrace

STAGES



We can install the house up to a certain stage, according to your needs.



STAGE 1

**“Ready from outside”
Structurally ready**

House ready from outside, starting from foundation. Includes internal walls, excludes all other internal works.

€76,475 + VAT

Installation time: 7 days

STAGE 2

**“Keys to the house”
Fully finished**

All exterior and interior works finished. “Keys to the house”. All works included from foundation.

€120,135 + VAT

Installation time: 20 days

Including:

- Production, materials
- Installation

Excluding (location and plot specific):

- Foundation
- Machinery rental (crane)
- Logistics
- Accommodation
- Project changes
- Add-ons



STAGE 1

EVERYTHING FINISHED FROM THE OUTSIDE

This option is suitable for clients who have contacts and know-how on interior works. ODYL would be responsible and give warranty for house structures (10 year warranty).

1. Glulam and CLT structures
2. Exterior and interior oil finishes
3. Opening fillings (windows, door)
4. Insulation (roof, floor, exterior walls)
5. Exterior finishes
6. Roof and hidden rain gutters
 - Roof choice: stone or steel



Stage 1 add-on Recommended

Terrace
(standard 71.6m², 50 cm from ground)

The house would visually look better + general usability is greater.

€8395 + VAT

Stairs = **€195,5/m + VAT**



STAGE 2

“KEYS TO THE HOUSE”

House ready for interior design and moving in.

1. Electrical, plumbing works
2. Heating/cooling, ventilation
3. Finishes on walls and ceilings
4. Fully equipped bathroom
5. Wooden-felt hanging ceilings
6. Parquet (oak)
7. Interior doors
8. Silicon finishes



Stage 2 add-on Recommended

LED Lights (interior and exterior)

An excellent solutions for “mood lights”.

€4135+ VAT





ODYL 1 + LOFT

ODYL 1 Bedroom option can have an added **13.4m2 LOFT.**



STAGE 1

CLT Intermediate floor for the LOFT

€2060 + VAT



STAGE 2

- CLT intermediate floor
- Parquet or carpet
- Solid wooden ladder
- Glass barrier

€6240+ VAT



ENERGY



HYBRID SOLAR SYSTEM STANDARD FULL BLACK ROOF PANELS



1. 7.8 kW full black solar panels, one side of the roof
2. 8 kW hybrid, 3-phase inverter (HV or LV)
3. 30 kW energy storage batteries, 3-phase (HV or LV). +/- kW would change the cost
4. MODBUS R2 Smart Inverter controller (optional €360)
5. Installation
6. Measurements and audit (if not required to be done by a local company)

High voltage system

€17,040 + VAT

*30 kW storage included

Low voltage system

€16,330 + VAT

*30kW storage included.

Not included: Transportation, team logistics and accommodation (2 days, 2 people), extra works and requirements if required by local law (e.g. a fire door or local audit).

100% OFF-GRID SYSTEM REQUIRES AN IN DEPTH ANALYSIS.

OTHER ADD-ONS



We offer value added elements which clients can choose based on their needs.



Full niche mirror

€436 + VAT



Niche stone cover

€340 + VAT



Full glass door

€ 1369+ VAT



**Storage room
sliding door**

€1438+ VAT



Bedroom wardrobe

€1628+ VAT



**Hot-tub
terrace integrated
(electric heating)**

€7475+ VAT

PLOT SPECIFIC



The below costs are excluded from the offer, predictive and differ per country and location, but are a reference point to calculate full total cost.



Foundation

(slab foundation house)

€5000 + VAT



Crane rental

(3 days)

€3000 + VAT



Logistics

(choices / access)

€ 4500 - €9000 + VAT



Team logistics

(4-6 people, depends on the stage)

€2000 - €5000 + VAT



Accommodation

(depends on choices 7-25 days)

€2000 - €8000 + VAT



Additional works

Re-projecting, special wishes.

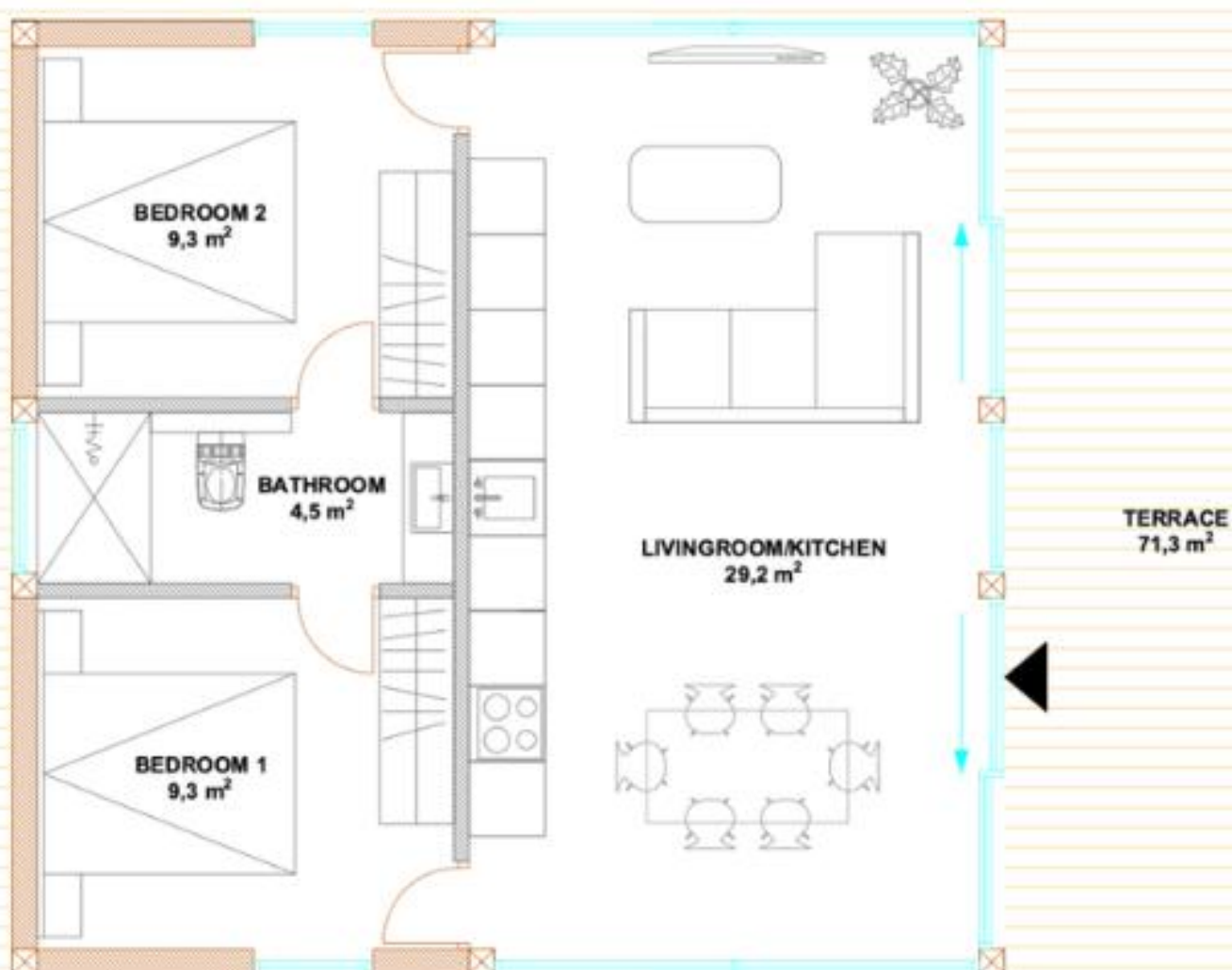
€50/h + VAT

PILE FOUNDATION 2 BEDROOM



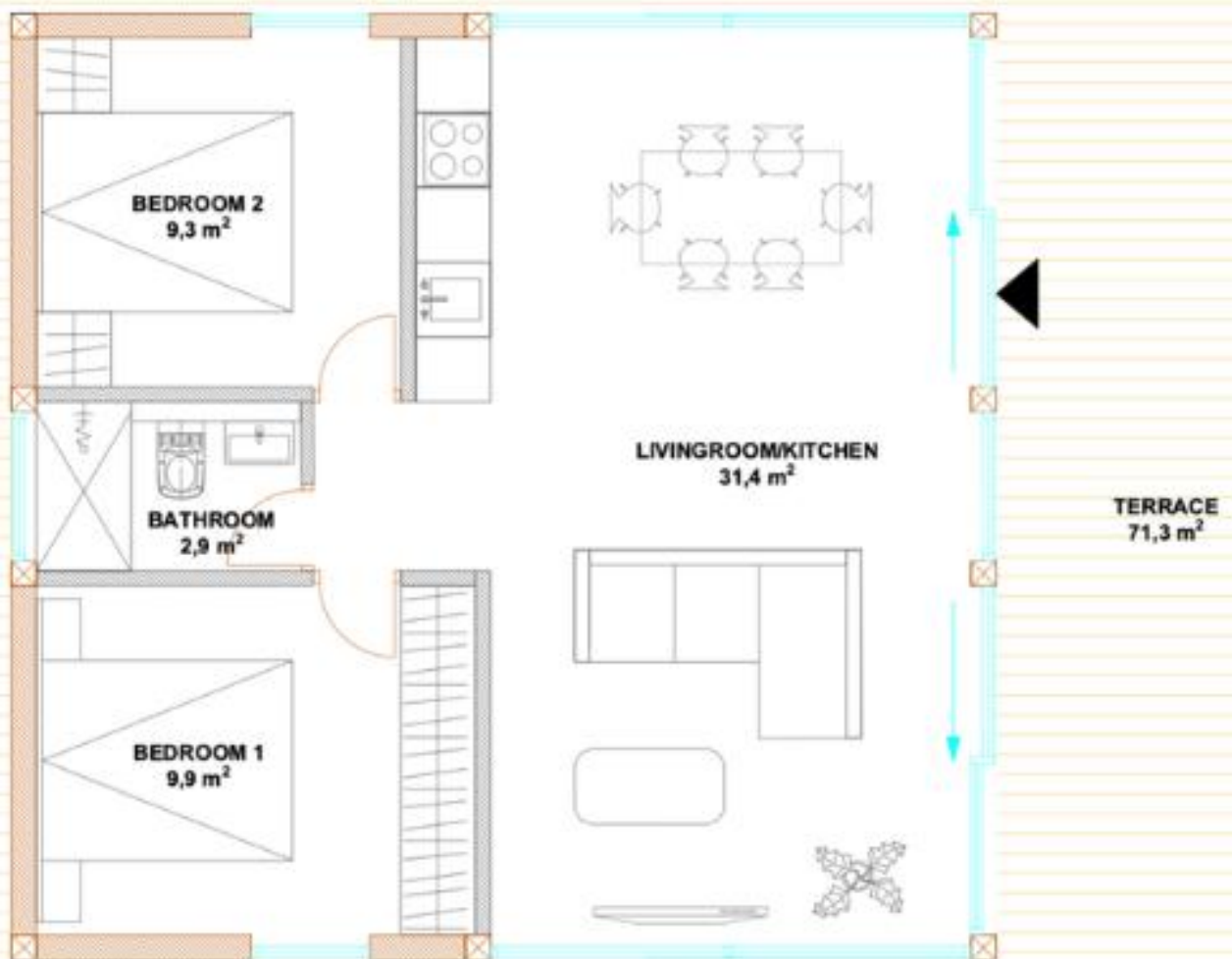
20
25

ODYL 2



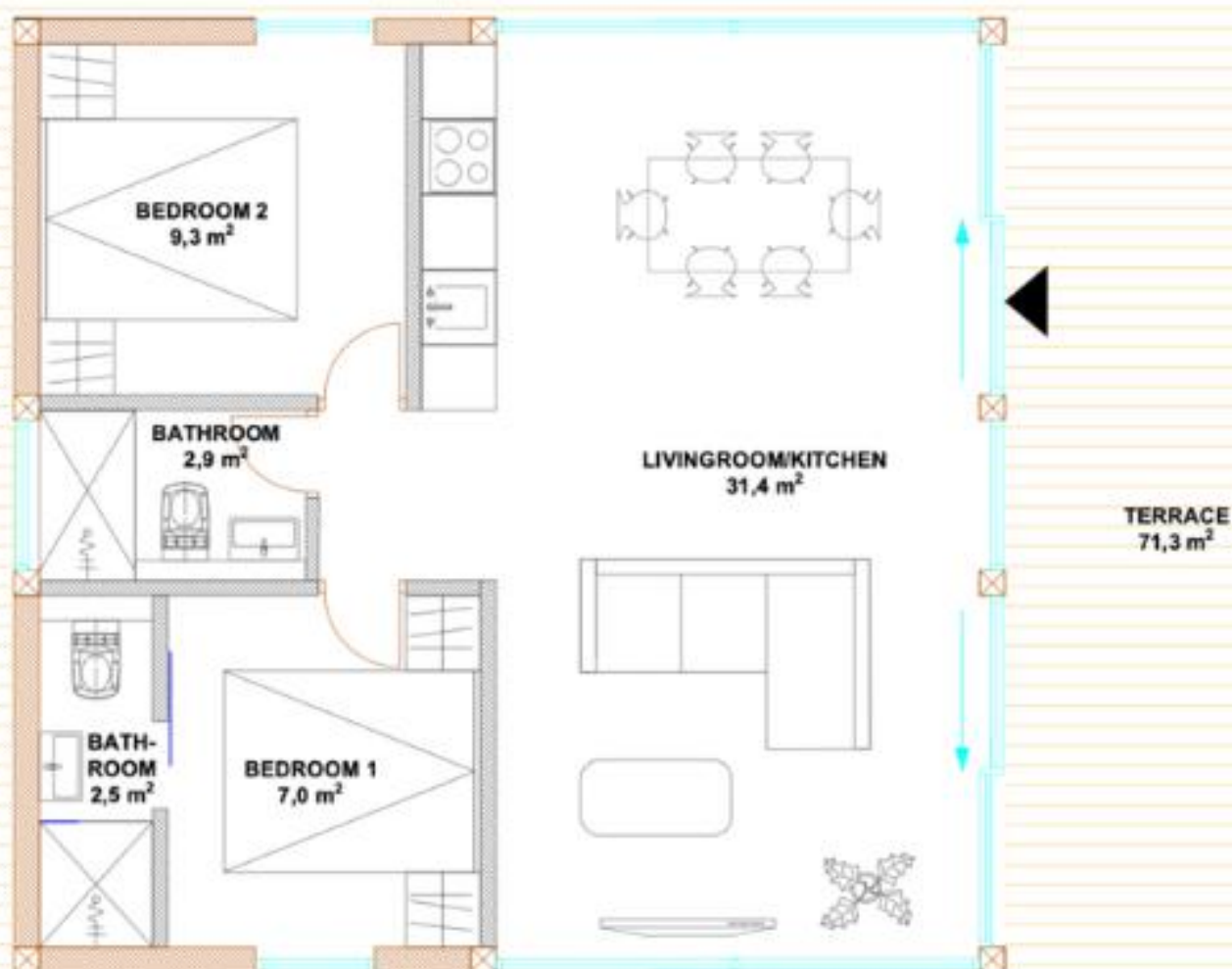
1. High ceilings in bedrooms
2. Technical room on the bathroom ceiling
3. Entrance from the living room

ODYL 2 (+1)



1. High ceilings in bedrooms
2. Technical room on the bathroom ceiling
3. Entrance from the living room

ODYL 2 (+2)



1. 2 bathrooms (2nd bathroom entrance can also be from the bedroom)
2. Technical room on the bathroom ceiling
3. Entrance from the living room

STAGES



We can install the house up to a certain stage, according to your needs.



STAGE 1

**“Ready from outside”
Structurally ready**

House ready from outside, starting from foundation. Includes internal walls, excludes all other internal works.

€113,390+ VAT (ODYL 2; 2+1)

€118,990+ VAT (ODYL 2+2)

Installation time: 7 days

Including:

- Production, materials
- Installation

Excluding (location and plot specific):

- Foundation
- Machinery rental (crane)
- Logistics
- Accommodation
- Project changes
- Add-ons

STAGE 2

**“Keys to the house”
Fully finished**

All exterior and interior works finished. “Keys to the house”. All works included from foundation.

€170,200+ VAT (ODYL 2; 2+1)

€175,800+ VAT (ODYL 2+2)

Installation time: 20 days



STAGE 1

EVERYTHING FINISHED FROM THE OUTSIDE

This option is suitable for clients who have contacts and know-how on interior works. ODYL would be responsible and give warranty for house structures (10 year warranty).

1. Glulam and CLT structures
2. Exterior and interior oil finishes
3. Opening fillings (windows, door)
4. Insulation (roof, floor, exterior walls)
5. Exterior finishes
6. Roof and hidden rain gutters
 - Roof choice: stone or steel



Stage 1 add-on Recommended

Terrace
(standard 71.6m², 50 cm from ground)

The house would visually look better +
general usability is greater.

€8395+ VAT

Stairs = **€195.5/m+ VAT**



STAGE 2

“KEYS TO THE HOUSE”

House ready for interior design and moving in.

1. Electrical, plumbing works
2. Heating/cooling, ventilation
3. Finishes on walls and ceilings
4. Fully equipped bathroom
5. Wooden-felt hanging ceilings
6. Parquet (oak)
7. Interior doors
8. Silicon finishes



Stage 2 add-on Recommended

LED Lights (interior and exterior)

An excellent solutions for “mood lights”.

€4135 + VAT



HYBRID SOLAR SYSTEM STANDARD FULL BLACK ROOF PANELS



1. 7.8 kW full black solar panels, one side of the roof
2. 8 kW hybrid, 3-phase inverter (HV or LV)
3. 30 kW energy storage batteries, 3-phase (HV or LV). +/- kW would change the cost
4. MODBUS R2 Smart Inverter controller (optional €360)
5. Installation
6. Measurements and audit (if not required to be done by a local company)

High voltage system

€17,940 + VAT

*30 kW storage included

Low voltage system

€16,330 + VAT

*30kW storage included.

Not included: Transportation, team logistics and accommodation (2 days, 2 people), extra works and requirements if required by local law (e.g. a fire door or local audit).

100% OFF-GRID SYSTEM REQUIRES AN IN DEPTH ANALYSIS.

OTHER ADD-ONS



We offer value added elements which clients can choose based on their needs.



Full niche mirror

€436 + VAT



Niche stone cover

€340+ VAT



Full glass door

€ 1369+ VAT



**Storage room
sliding door**

€1438+ VAT



Bedroom wardrobe

€1628+ VAT



**Hot-tub
terrace integrated
(electric heating)**

€7475+ VAT

PLOT SPECIFIC



The below costs are excluded from the offer, predictive and differ per country and location, but are a reference point to calculate full total cost.



Foundation

(screw piles, house)

€5000 + VAT



Crane rental

(3 days)

€3400 + VAT



Logistics

(choices / access)

€ 4500 - €9000 + VAT



Team logistics

(4-6 people, depends on the stage)

€2000 - €5000 + VAT



Accommodation

(depends on choices 7-25 days)

€2000 - €8000 + VAT



Additional works

Re-projecting, special wishes.

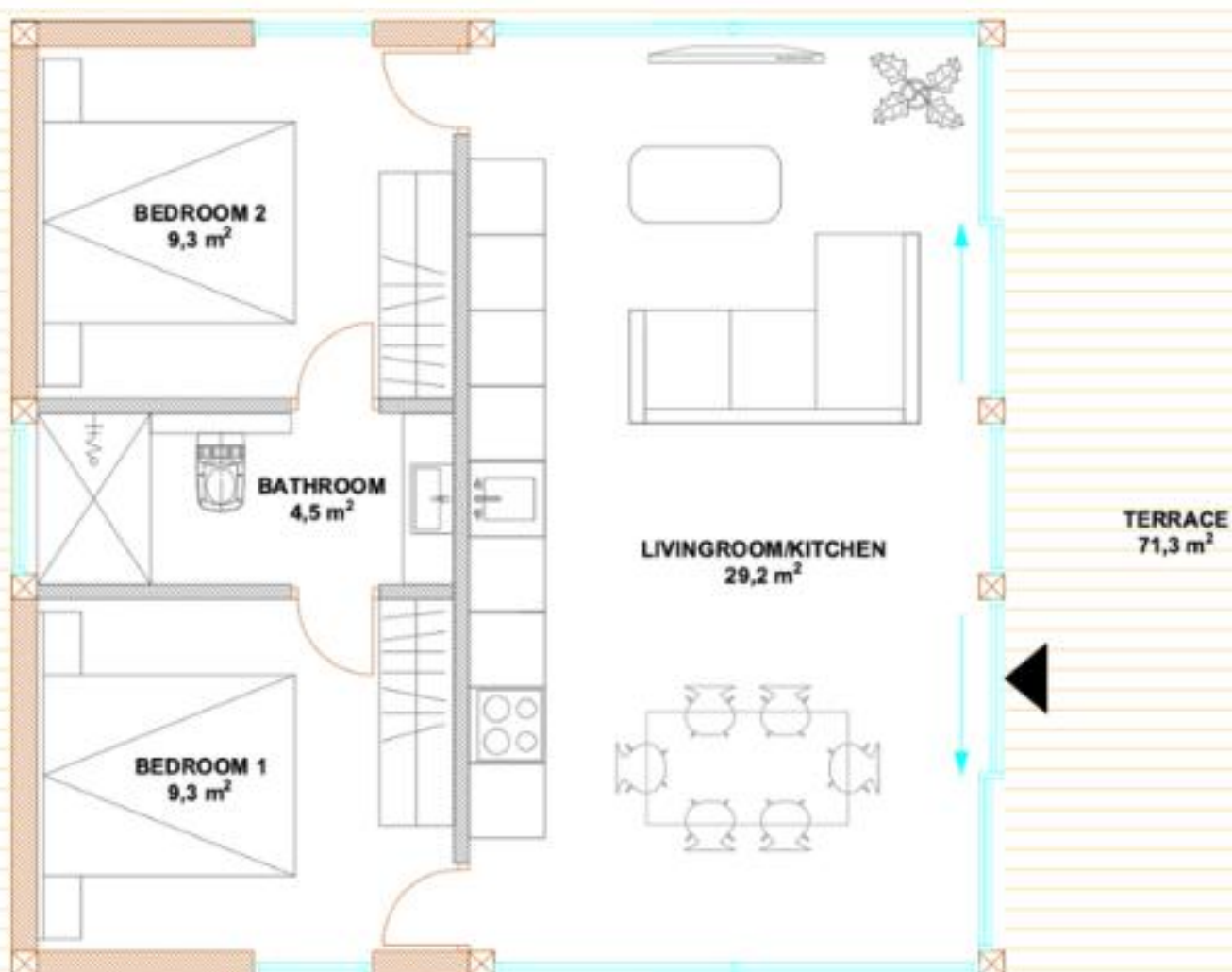
€50/h + VAT

SLAB FOUNDATION 2 BEDROOM



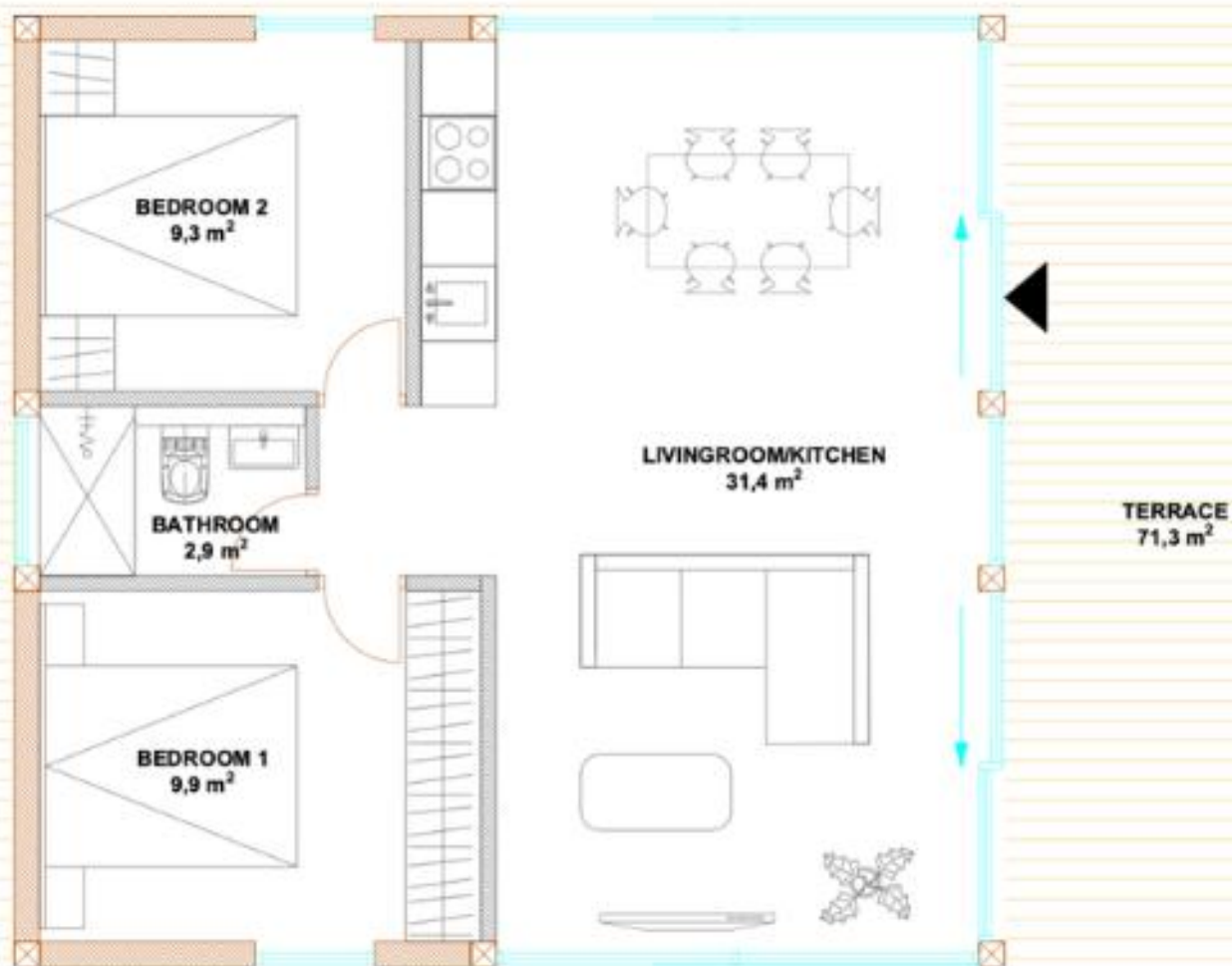
20
25

ODYL 2



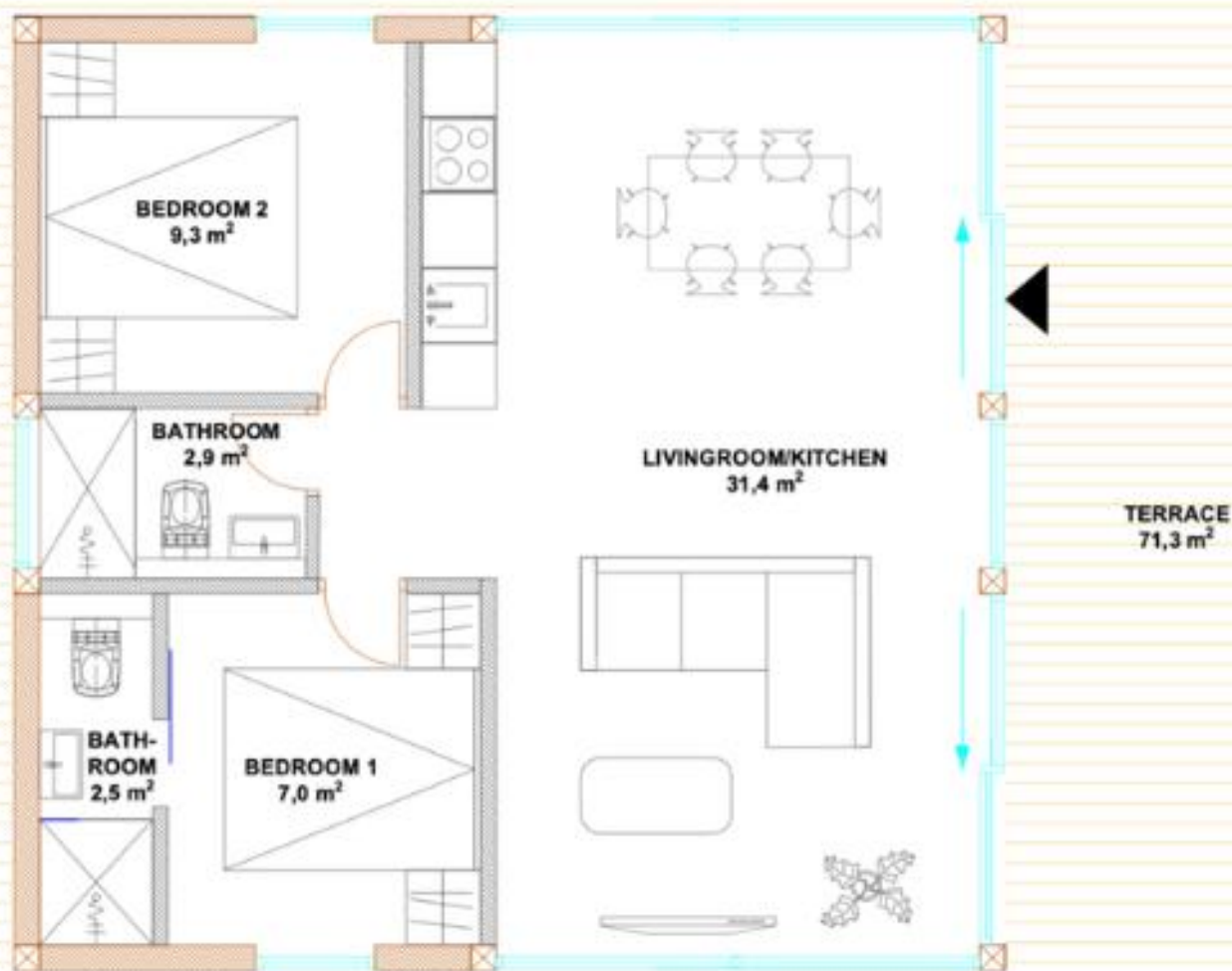
1. High ceilings in bedrooms
2. Technical room on the bathroom ceiling
3. Entrance from the living room

ODYL 2 (+1)



1. High ceilings in bedrooms
2. Technical room on the bathroom ceiling
3. Entrance from the living room

ODYL 2 (+2)



1. 2 bathrooms (2nd bathroom entrance can also be from the bedroom)
2. Technical room on the bathroom ceiling
3. Entrance from the living room

STAGES



We can install the house up to a certain stage, according to your needs.



STAGE 1

“Ready from outside” Structurally ready

House ready from outside, starting from foundation. Includes internal walls, excludes all other internal works.

€82,225 + VAT (ODYL 2; 2+1)

€86,825 + VAT (ODYL 2+2)

Installation time: 7 days

Including:

- Production, materials
- Installation

Excluding (location and plot specific):

- Foundation
- Machinery rental (crane)
- Logistics
- Accommodation
- Project changes
- Add-ons

STAGE 2

“Keys to the house” Fully finished

All exterior and interior works finished. “Keys to the house”. All works included from foundation.

€125,885 + VAT (ODYL 2; 2+1)

€139,485 + VAT (ODYL 2+2)

Installation time: 20 days



STAGE 1

EVERYTHING FINISHED FROM THE OUTSIDE

This option is suitable for clients who have contacts and know-how on interior works. ODYL would be responsible and give warranty for house structures (10 year warranty).

1. Glulam and CLT structures
2. Exterior and interior oil finishes
3. Opening fillings (windows, door)
4. Insulation (roof, floor, exterior walls)
5. Exterior finishes
6. Roof and hidden rain gutters
 - Roof choice: stone or steel



Stage 1 add-on Recommended

Terrace
(standard 71.6m², 50 cm from ground)

The house would visually look better + general usability is greater.

€8395 + VAT

Stairs = **€195.5/m + VAT**



STAGE 2

“KEYS TO THE HOUSE”

House ready for interior design and moving in.

1. Electrical, plumbing works
2. Heating/cooling, ventilation
3. Finishes on walls and ceilings
4. Fully equipped bathroom
5. Wooden-felt hanging ceilings
6. Parquet (oak)
7. Interior doors
8. Silicon finishes



Stage 2 add-on Recommended

LED Lights (interior and exterior)

An excellent solutions for “mood lights”.

€4135 + VAT



HYBRID SOLAR SYSTEM STANDARD FULL BLACK ROOF PANELS



1. 7.8 kW full black solar panels, one side of the roof
2. 8 kW hybrid, 3-phase inverter (HV or LV)
3. 30 kW energy storage batteries, 3-phase (HV or LV). +/- kW would change the cost
4. MODBUS R2 Smart Inverter controller (optional €360)
5. Installation
6. Measurements and audit (if not required to be done by a local company)

High voltage system

€17,940 + VAT

*30 kW storage included

Low voltage system

€16,330 + VAT

*30kW storage included.

Not included: Transportation, team logistics and accommodation (2 days, 2 people), extra works and requirements if required by local law (e.g. a fire door or local audit).

100% OFF-GRID SYSTEM REQUIRES AN IN DEPTH ANALYSIS.

OTHER ADD-ONS



We offer value added elements which clients can choose based on their needs.



Full niche mirror

€436 + VAT



Niche stone cover

€340 + VAT



Full glass door

€ 1369+ VAT



**Storage room
sliding door**

€1438+ VAT



Bedroom wardrobe

€1628+ VAT



**Hot-tub
terrace integrated
(electric heating)**

€7475+ VAT

PLOT SPECIFIC



The below costs are excluded from the offer, predictive and differ per country and location, but are a reference point to calculate full total cost.



Slab foundation
(with floor heating)

€40000+ VAT



Crane rental
(3 days)

€3400 + VAT



Logistics
(choices / access)

€ 4500 - €9000 + VAT



Team logistics
(4-6 people, depends
on the stage)

€2000 - €5000 + VAT



Accommodation
(depends on choices
7-25 days)

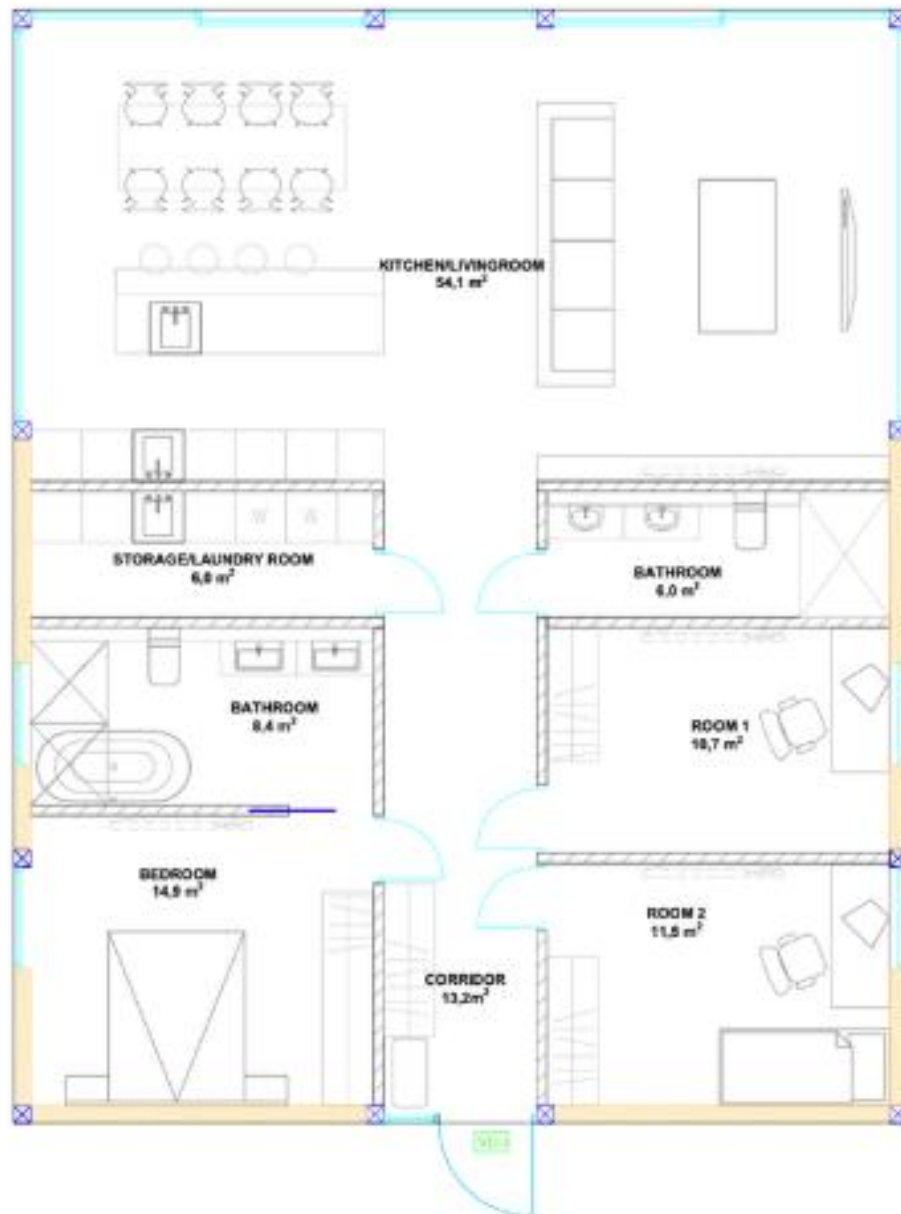
€2000 - €8000 + VAT



Additional works
Re-projecting, special
wishes.

€50/h + VAT

ODYL 3



Usable area **138m²**

- Inc. **13,2 m²** technical room on top of the corridor ceiling (II floor))

Building area **137,6 m²**

20
25

STAGES



We can install the house up to a certain stage, according to your needs.



STAGE 1 Structural and external

House ready from outside,
starting from foundation.

€166,888 + VAT

Installation: 10 days



STAGE 2 “Keys to the house” Fully finished

All exterior and interior works
finished. “Keys to the house”

€265,305 + VAT

+ 4 weeks

Total installation time = 8 weeks without add-ons

Including:

- Production, materials
- Installation

Excluding:

- Foundation
- Machinery rental (crane)
- Logistics
- Accommodation
- Add-ons
- Administration



STAGE 1

EVERYTHING FINISHED FROM THE OUTSIDE

This option is suitable for clients who have contacts and know-how on interior works. ODYL would be responsible and give warranty for house structures (10 year warranty).

1. Glulam and CLT structures
2. Exterior and interior oil finishes
3. Opening fillings (windows, door)
4. Insulation (roof, floor, exterior walls)
5. Exterior finishes
6. Roof and hidden rain gutters
 - o Roof choice: stone or steel



Stage 1 add-on Recommended

Terrace

The house would visually look better + general usability and comfort with the terrace is greater.

Starting from
€103.5/m²





STAGE 2

“KEYS TO THE HOUSE

House ready for interior design and moving in.

1. Finishes on walls and ceilings
2. Bathroom tiling
3. Wooden-felt ceilings
4. Parquet (oak)
5. Interior doors
6. Silicon finishes
7. Bathroom furniture
8. Bathroom accessories



Stage 3 Options

Interior design options. Clients can choose their preferred tiles, parquet etc.

+/- based on the standard.
E.g. honeycomb doors with simple accessories = -€4830 in comparison to ODYL standard solid wooden doors



PLOT SPECIFIC



The below costs are excluded from the offer, predictive and differ per country and location, but are a reference point to calculate full total cost.



Foundation

(slab + floor heating)

€45,000 + VAT



Crane rental

(3 days)

€3400 + VAT



Logistics

(choices / access)

€ 8500 - €15,000 + VAT



Team logistics

(4-6 people, depends on the stage)

€3000 - €5000 + VAT



Accommodation

(depends on choices 10-35 days)

€2500 - €10,000 + VAT



Additional works

Re-projecting, special wishes.

€50/h + VAT



+372 56 248 851



info@odylhouse.com



www.odylhouse.com



Showcase house: Puhkekääru, Pindi, Estonia