



Spartan Pathways Travel

JULY 11-19, 2025

.....
with optional
Jackson Hole Post-Tour

NATIONAL PARKS & LODGES OF THE OLD WEST

Orbridge



Spartan Pathways Travel

Dear Spartans,

Join us on an immersive adventure through the heart of America's most captivating landscapes, traversing wildlife-rich terrain, picturesque canyons and stunning mountain passes. Each engaging day is its own journey, highlighted by leisurely hikes, educational discussions and authentic Old West charm.

Stand in awe before the rugged majesty of Badlands National Park, safari amidst herds of bison and elk in Custer State Park, and delve into the cultural tapestry of the Black Hills with visits to the awe-inspiring Crazy Horse Memorial and the iconic faces of Mount Rushmore. Witness the geothermal wonders of Yellowstone, the grandeur of Grand Teton National Park and the genuine hospitality of Jackson Hole.

After fulfilling days, retreat to well-appointed properties and various landmark lodges that are national treasures themselves.

Space is limited. With significant savings of more than \$1,000 per couple, we anticipate this tour will fill quickly. To reserve, visit msu.orbridge.com, call (866) 639-0079 or by returning the attached reservation form.

Go Green,

Regina Cross
Director, Spartan Pathways Travel Program
MSU Alumni Office
(888) 697-2863



National Parks & Lodges | Itinerary and Highlights *(subject to change)*

Day 1: ARRIVE IN RAPID CITY, SD Upon arrival an Orbridge Expedition Leader will be waiting to assist with your transfer to the hotel. Later join the group for a welcome dinner and tour briefing.
Overnight: Hotel Alex Johnson (D)

Day 2: RAPID CITY | BADLANDS NATIONAL PARK | CUSTER STATE PARK Set out for Badlands National Park. Rich in fossil beds, the park provides a fascinating glimpse into the area's history. Continue to Wall for lunch on your own. At Custer State Park, board a safari Jeep for a thrilling wildlife tour.
Overnight: Custer State Game Lodge (B,D)

Day 3: MAMMOTH SITE | CRAZY HORSE | CUSTER Visit the mammoth paleontological site, research center and museum. Walk the sinkhole and see the dig site and paleontology laboratory. Next visit the base and museum of Crazy Horse Memorial followed by an audio-visual program featuring artist Korczak Ziolkowski.
Overnight: Custer State Game Lodge (B,D)

Day 4: CUSTER | MOUNT RUSHMORE | SPEARFISH CANYON Spend the morning at Mount Rushmore with time to explore the Visitor's Center and Sculptor's Studio or hike the Presidential Trail. Continue to Spearfish for the evening.
Overnight: Spearfish Canyon Lodge (B,D)

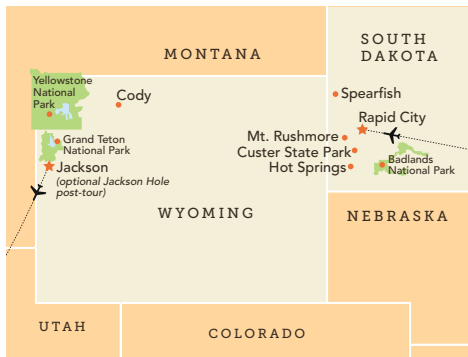
Day 5: SPEARFISH CANYON | CODY, WY Today is a scenic travel day to Cody, stopping at The Ranch at UCross for lunch.
Overnight: Holiday Inn Cody-At Buffalo Bill Village (B,L)

Day 6: CODY | YELLOWSTONE NATIONAL PARK Visit the Buffalo Bill Center of the West that features five museums, a research library and special exhibitions. Continue to Yellowstone to see Old Faithful erupt and explore the Upper and Lower Falls.
Overnight: Yellowstone Lodging (B,L,D)

Day 7: YELLOWSTONE NATIONAL PARK Enjoy a full day for independent park touring. Perhaps stroll Fountain Paint Pot Trail, see Mammoth Hot Springs, or visit the Albright Visitor Center and Museum.
Overnight: Yellowstone Lodging (B,D)

Day 8: YELLOWSTONE NATIONAL PARK | GRAND TETON NATIONAL PARK | JACKSON Head south to Grand Teton National Park. Lunch is planned at Pioneer Grill at Jackson Lake Lodge. Tonight gather with fellow travel companions to celebrate the adventures of the past week at a farewell dinner.
Overnight: Rustic Inn at Jackson Hole Creekside Resort and Spa (B,D)

Day 9: DEPART JACKSON After breakfast transfer to the airport for flights home. (B)



(B = Breakfast, L = Lunch, D = Dinner)



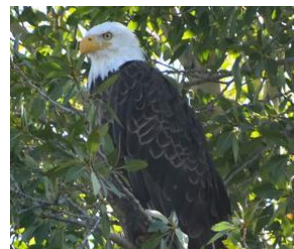
What's Included

- 8 nights in unique accommodations and inspiring landmark lodges
- 8 breakfasts, 2 lunches and 7 dinners including special welcome and farewell meals
- Full guiding services of an Orbridge Expedition Leader as well as expert local guides
- All activities as described in the 9-day itinerary
- Admission and park fees
- Private deluxe motor coach with air conditioning and comfortable seating
- Luggage portage (where available)
- Gratuities to Orbridge Expedition Leader, local guides, drivers, porters and wait staff for included meals
- Airport transfers for guests arriving and departing during the suggested times

Your Expedition Leader:

Enriched from the wealth of expertise provided by your Orbridge Expedition Leader, you'll bring home a deeper understanding of the flora, fauna, natural history and cultural narrative of the diverse parks of the American West.

Orbridge



Activity Level: The majority of the program's activities will take place outdoors and a fair amount of walking on varying terrain is to be expected. Many of the parks have dirt trails, but they are usually fairly smooth for walking. Some have paved pathways and boardwalks. It's our expectation that guests are able to walk a mile at a moderate pace, get in and out of a motor coach, and walk up a flight of stairs without assistance. Keep in mind that you will experience varying altitudes, rising up to 9,000 feet, to which you may not be accustomed.

Accommodations *(subject to change)*

HOTEL ALEX JOHNSON

This historic hotel features a casual Irish pub, fitness center, café and rooftop bar overlooking town.



CUSTER STATE GAME LODGE

Set in a beautiful mountain valley, the lodge is listed on the National Register of Historic Places.



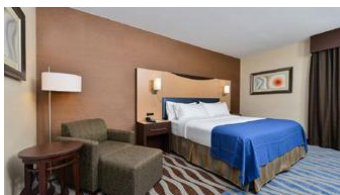
SPEARFISH CANYON LODGE

Nestled alongside spectacular limestone cliffs, the lodge features log walls and a 40-foot stone fireplace.



HOLIDAY INN CODY-AT BUFFALO BILL VILLAGE

This hotel offers well-appointed rooms with all the comforts of home.



YELLOWSTONE NATIONAL PARK LODGING

Confirmed by the National Park Service, you'll stay at one or two of the following Yellowstone properties: Old Faithful Inn, Old Faithful Snow Lodge, Canyon Lodge & Cabins, Grant Village or Mammoth Hot Springs Hotel. Each offers comfortable lodging and amenities.

RUSTIC INN AT JACKSON HOLE CREEKSIDE RESORT AND SPA

This resort offers the finest Western accommodations amidst 12 lush acres and an outdoor pool.



Optional Post-Tour Jackson Hole

Extend your adventures in the Old West with additional days in Jackson Hole. This charming town offers a sophisticated yet rustic atmosphere with upscale dining, art galleries and a variety of outdoor activities.

Day 9: **JACKSON** Gather for a private docent-guided tour of the National Museum of Wildlife Art. Situated on a cliff overlooking the National Elk Refuge, the museum's collection features 5,000 pieces from more than 550 artists. Dating from 2500 B.C. to the present, the exhibits chronicle the history of wildlife in art, focusing primarily on European and American painting and sculpture. The collection of American art from the 19th and 20th centuries is particularly strong, recording European exploration of the American West. Many of these works predate photography, making them vital representations of the frontier era in the history of the U.S.
Overnight: Rustic Inn at Jackson Hole Creekside Resort and Spa

Day 10: **JACKSON** After breakfast set out on a three-hour adventure, beginning at Pritchard Creek, floating past nesting areas of bald eagles and ospreys. Early morning is watering time—and the best viewing time—for native fauna along the river, such as waterfowl, moose, deer and river otters. Have your camera handy to capture the beautiful scenery and active wildlife. The remainder of the day is at leisure to explore downtown Jackson's boutiques and restaurants. Or take advantage of the various amenities at the Rustic Inn's resort and spa.
Overnight: Rustic Inn at Jackson Hole Creekside Resort and Spa (B)

Day 11: **DEPART FOR JACKSON** After breakfast guests departing during the suggested times take a complimentary transfer to the airport for flights home. (B)

What's Included

- 2 nights at Rustic Inn at Jackson Hole Creekside Resort & Spa (or similar) including breakfast each morning
- Admission to the National Museum of Wildlife Art including a docent-led tour
- A half-day scenic Snake River float trip
- Transportation for included activities
- Luggage portage
- Airport transfers for guests departing during the suggested times



NATIONAL PARKS & LODGES OF THE OLD WEST

JULY 11-19, 2025

Jackson Hole Post-Tour: July 19-21, 2025

Standard
Rate:

~~\$6,199~~

~~\$8,099~~ Single

Special
Rate:

\$5,695*

\$7,595 Single

Jackson Hole Post-Tour*

Double: \$1,295 | Single: \$1,895

Rates are per person based on double occupancy except where noted as Single, in U.S. dollars.

Reserve by Credit Card:

Online: msu.orbridge.com

Phone: (866) 639-0079

Fax: (206) 452-5655

Reserve by Check:

Made payable to **Orbridge, LLC**

Mail to: Orbridge, P.O. Box 1376

Poulsbo, WA 98370

We strongly suggest purchasing travel insurance. Travel insurance information will be sent to you with your email confirmation from the MSU Alumni Office. For more information, contact Orbridge at (866) 639-0079 or you may call the MSU Alumni Office at (888) 697-2863.

GUEST INFORMATION:

Guest #1 Name (Title/Salutation): _____

Email: _____ Class Year: _____

Home Phone: _____ Alt. Phone: _____

Address: _____

City: _____ State: _____ Zip: _____

Guest #2 Name (Title/Salutation): _____

Email: _____ Class Year: _____

Home Phone: _____ Alt. Phone: _____

DEPOSIT PAYMENT:

Check ACH (Automated Clearing House) MasterCard/Visa American Express Discover

Card #: _____ Exp. Date: _____ CVV: _____

Name (as printed on card): _____

Billing Address (if different from above): _____

City: _____ State: _____ Zip: _____


DEPOSIT:

_____ guests joining program (\$850/person) +

_____ guests joining post-tour (\$500/person) = **TOTAL DEPOSIT: \$** _____

I/we have read, understand, and agree to the full Terms & Conditions at terms.orbridge.com; and I/we agree that Orbridge, LLC is authorized to charge my credit card above and/or take my/our deposit for this program.

Signature: _____ Date: _____

 Orbridge takes seriously the responsibility to minimize our global environmental impact. Each year we plant 100,000 trees in U.S. State Forests with afforestation needs as an ongoing initiative among our evolving sustainability efforts. Learn more at orbridge.com/going-green.



Spartan Pathways Travel

MSU Alumni Office

535 Chestnut Road, Room 300
East Lansing, MI 48824-2005

Michigan State University Alumni Office Spartan Pathways
Disclaimer:

The Michigan State University Alumni Office (the MSU Alumni Office or MSUAO) and the Spartan Pathways Travel Program is not the Tour Operator. The MSUAO is not responsible for the changes of flight times, fare changes, dishonor of airline, hotel or motor coach transportation and car rental reservations, delays, losses, injuries, inconveniences, cessation of operations, airline or tour operator bankruptcies, acts of God, or any other event beyond our control. The MSUAO acts only as a sponsor with respect to the travel services, and it shall not be responsible for changes to flight times, fare changes, dishonor of airline, hotel or other reservations, injury, damage, loss of baggage, accidents or for the acts or defaults of any person or entity engaged in providing services to participants or in carrying out other arrangements of the tour. Further, the MSUAO shall not be responsible for losses or additional expenses of the participant due to sickness, weather, strike, civil unrest, acts of terrorism, pandemic, epidemic, quarantine, acts of God, governmental intervention, or other causes beyond its control. The MSUAO shall not be responsible for alteration in the itinerary as deemed necessary for carrying out the tour and the Tour Operator may substitute hotels of similar quality. The Tour Operator may postpone or cancel any tour prior to departure. The MSUAO or the Tour Operator may decline to accept or to retain any person as a member of the tour should such person's physical or mental health, actions or general deportment impede the operation of the tour or the rights or welfare of the other participants. No refund will be made for the unused portion of any tour. By embarking upon travel, the participant voluntarily assumes all risk involved in such travel, whether expected or unexpected. Participant is hereby warned of the above risks as well as possible travel industry force majeure, bankruptcies and medical and climatic disruptions, and the possibility participant may be unable to travel as scheduled because of personal emergency. Participant is advised to consider obtaining appropriate insurance coverage against these risks. Applicants for participation on this tour accept in full all the conditions set forth above. The MSUAO partners with other universities and alumni from other universities will be on many departures. While some of the Spartan Pathway's tours are exclusive to just MSU alumni, on many of the tours we partner with other universities/organizations that have travel programs. Space allotments for these tours are given to each university and after a guaranteed time allotted for reservations, available space is opened to all universities/organizations. Therefore, some departures may have universities with greater numbers of alumni on the tour than MSU.

MICHSTNP252

NATIONAL PARKS & LODGES OF THE OLD WEST

JULY 11-19, 2025

Special Alumni Rate:

Save more than \$1,000 per couple
30-day refund guarantee

FREE EXPEDITION LIBRARY
AN EXCLUSIVE EARLY
RESERVATION BONUS

Reserve by

April 4, 2025**

PRSR-STD
U.S. POSTAGE
PAID
PERMIT NO. 825
SAN DIEGO, CA