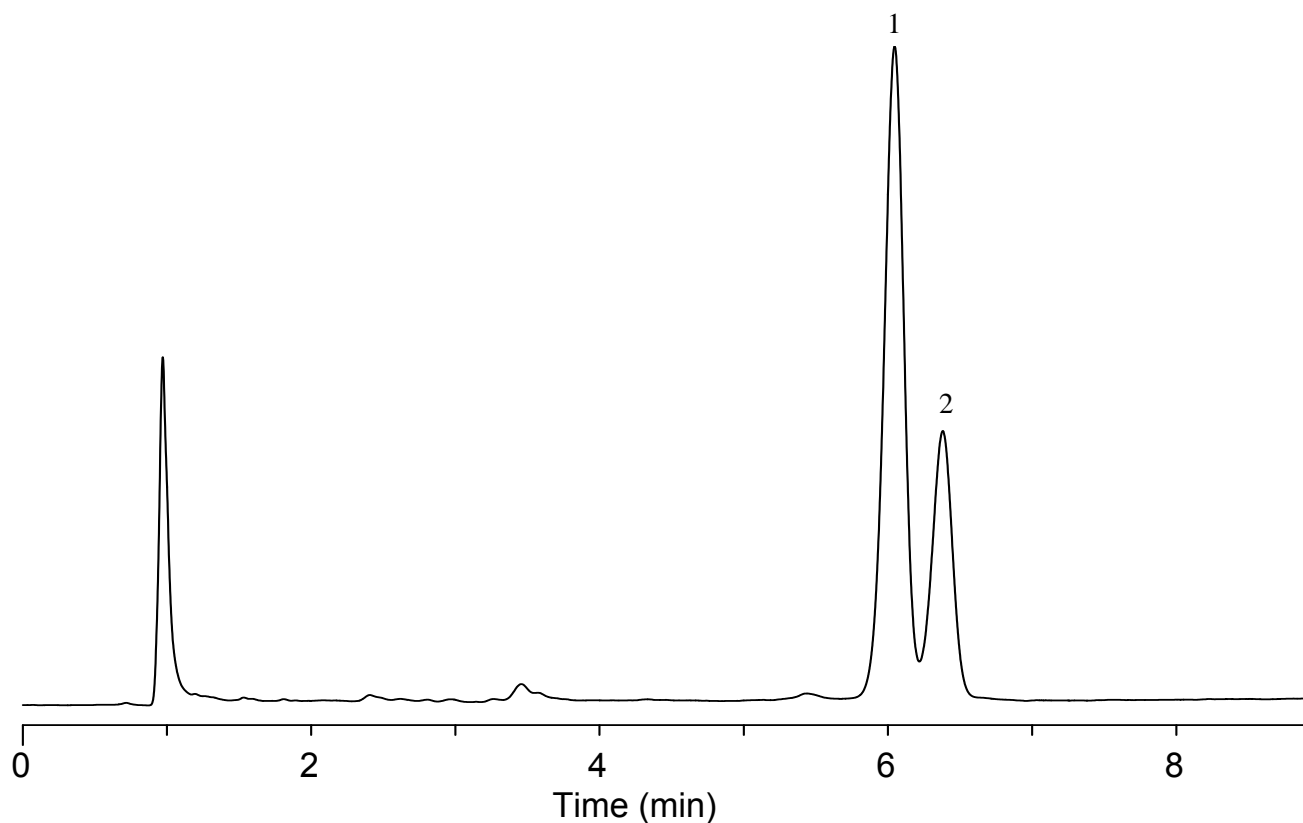


InertSearch™ for LC

Inertsil® Applications

Analysis of Carotene

Data No. LA853-0784



Conditions

Column : Monoclad C18-HS (150 x 3.0 mm I.D.)
Column Cat. No. : 5020-10803
Eluent : CH₃OH
Flow Rate : 1 mL/min
Col. Temp. : UV 455 nm
Detection : 40 °C
Injection Vol. : 2 µL
Sample : Carotene

Analyte:

1. α - Carotene
2. β - Carotene