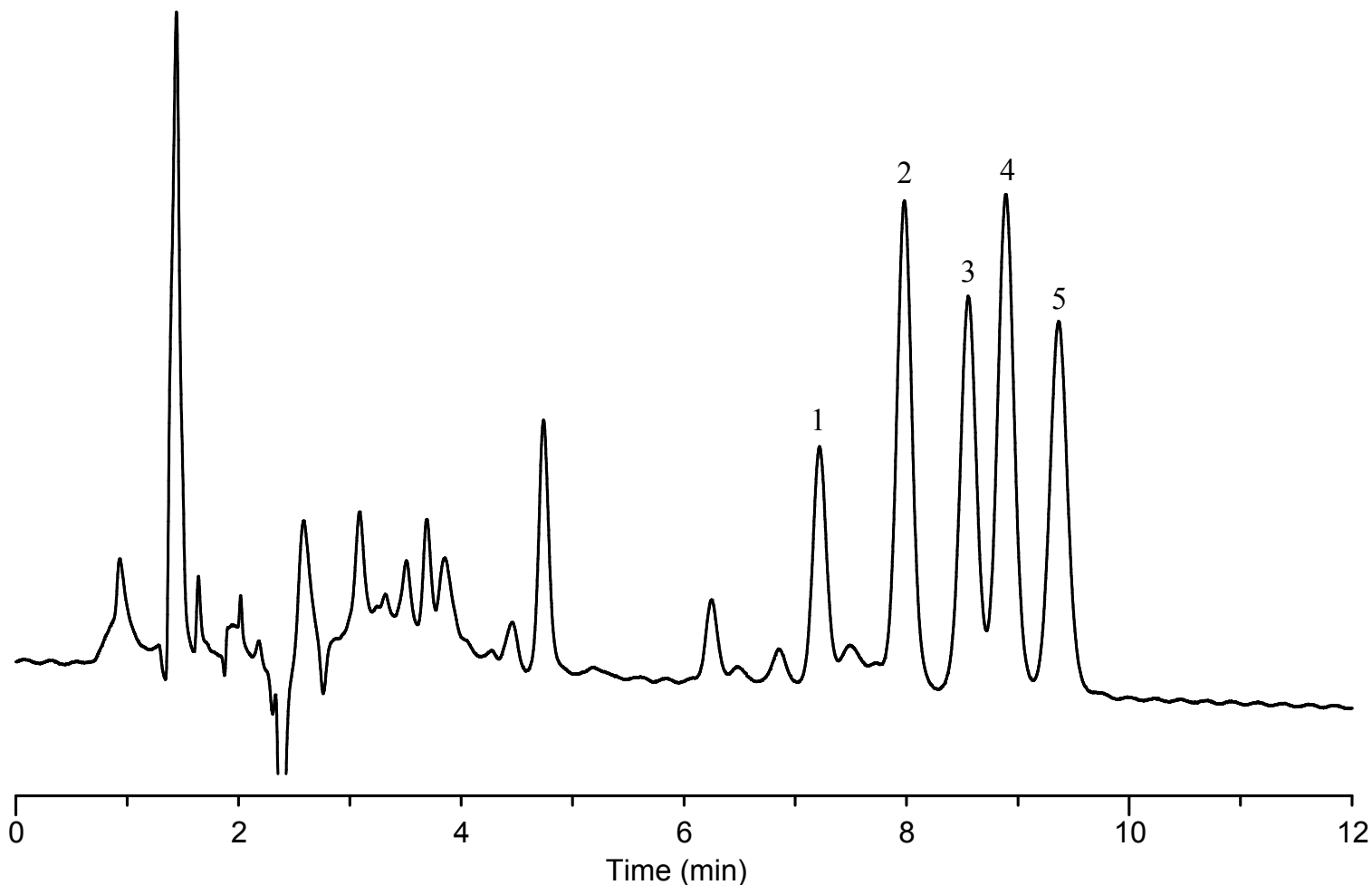


# InertSearch™ for LC

Inertsil™ Applications

## Analysis of Sterols

Data No. LB586-0806



### Conditions

**System** : GL7700 HPLC system  
**Column** : InertSustain PFP HP (3  $\mu$  m, 150 x 2.1 mm I.D.)  
**Column Cat. No.** : 5020-87921  
**Eluent** : A) CH<sub>3</sub>CN  
          : B) H<sub>2</sub>O  
          : A/B = 65/35, v/v  
**Flow rate** : 0.2 mL/min  
**Col. Temp.** : 40 °C  
**Detection** : UV 210 nm (UV7750 with semi-micro flow cell)  
**Injection Vol.** : 0.5  $\mu$  L  
**Sample** : Standard

### Analyte:

1. Ergosterol	100 mg/L
2. Cholesterol	100 mg/L
3. Campesterol	100 mg/L
4. Stigmasterol	100 mg/L
5. $\beta$ -Sitosterol	100 mg/L