

Winchelsea Star

Price \$1

Your Weekly Community Newspaper

Since 1977

Vol 47 Ed 43

Tuesday 5 November 2024

winchelseastar.org.au



My Home, Our Winchelsea, an exhibition of photographs and accompanying stories, was on display at the Shire Hall.

The exhibition explored why community member have chosen to settle in Winchelsea.

Over a three day period, photographer Paul Dunn, collaborated with fourteen participants and determined which locations best expressed each person's connection to place.

Stories were captured to accompany the photographs.

My Home, Our Winchelsea

A man of few words, a generous spirit, and a beautiful voice. Stewart is a 4th generation Winchelsea person. His family emigrated from Scotland and set up as farmers. Stewart is passionate about addressing the environmental impacts of farming on the landscape, as he quietly goes about his regeneration project. Stewart has been the inaugural member of a multitude of groups – including the Star Committee, the CFA and Landcare. Stewart was a member of the Winchelsea Concert Band and continues singing with a group of local vocalists. He is described as a curious person who sees the richness of the community and proudly represents it.

October November 2024

NOVEMBER 2024	
Friday - Saturday 1-2 November 10.00am – 2.00pm	Uniting Book Sale 272 Torquay Road Grovedale.
Saturday 2 November 1-3pm	Riverlee Art Show Opening Winchelsea Shire Hall, 28 Hesse St Winchelsea
Long Weekend 2,3,4 November	Riverlee Art Show Winchelsea Shire Hall, 28 Hesse St Winchelsea
Friday - Saturday 8, 9 November 6.30pm	Winchelsea Repertory Society 'Shaz and Nicks Greek Wedding Reception' Globe Theatre, Winchelsea
Sunday 10 Nov 2024 9am-1pm	Winchelsea Community Market Winchelsea Shire Hall, 28 Hesse St Winchelsea
Monday 11 November 10.30am	Remembrance Day Service At the Cairns, Main Street Winchelsea
Monday 11 November 6.30-8.30pm	AGM Growing Winchelsea Inc Winchelsea Shire Hall, 28 Hesse St Winchelsea

Friday - Saturday 15, 16 November 6.30pm	Winchelsea Repertory Society 'Shaz and Nicks Greek Wedding Reception' Globe Theatre, Winchelsea
16 November 11am - 4 pm	Diamond Dot Day Senior Citizens Rooms 36-40 Harding Street, Winchelsea
Tuesday 19 November 5.30pm	AGM Community Bank Surf Coast Winchelsea Shire Hall, 28 Hesse St Winchelsea
Monday 25 November 7.30pm	AGM Winchelsea Football & Netball Club Inc Eastern Reserve, Winchelsea

Winchelsea Lions Club will be holding a stall at this Sunday's market. Selling Christmas cakes and puddings, our famous shredded paper bricks for your summer fire pits, and grab yourself a ticket in our Christmas food voucher raffle



More Than 80,000 Seniors Go Digital

Victorian seniors are going digital with more than 80,000 downloads of the digital Seniors Card to the Service Victoria app since its launch in June last year.

Victorian seniors are encouraged to download the free digital Seniors Card to their Service Victoria app – the card is free and takes less than 5 minutes to add.

The card is a digital version of the physical Seniors Card and can be stored securely, privately, and easily on the Service Victoria digital wallet on a mobile device. Seniors can access all the same discounts and benefits as the physical card with the digital version.

The card supports seniors to keep active and engaged with the community. It includes benefits such as discounts on shopping and dining, travel and attractions, health, home, auto and more. Other benefits include e-gift and gift card offers for groceries, petrol and hardware.



Senior Victorians have been using their digital Seniors Card for the Victorian Seniors Festival, an iconic festival that runs for the month of October every year, with free and low-cost events across the state – and free public transport.

Major events in October included Celebration Day at Fed Square, the Melbourne Town Hall Big Band Dance and the Club Broadway concert.

The Service Victoria digital wallet now includes a range of tokens such as the Veterans Card - Victoria, Seniors Card, Digital Driver Licence, Working with Children Check and others.

Victorians can leave their wallet at home and securely store and access their identification and entitlement cards all within their mobile device, reducing the risk of loss or theft.

Through the Service Victoria app, Victorians can easily access more than 130 government services online.

Victorians can apply for a Senior's Card at seniorsonline.vic.gov.au/seniors-card.

Find out more about the Victorian Senior's Festival at seniorsonline.vic.gov.au/festival-calendar.



Arboretum Trail Concept Plan Unveiled

The concept Plan for the Winchelsea Arboretum Trail (WAT) was unveiled this week. The document seeks to provide potential partners with detail about the scope of the proposed Winchelsea Arboretum Trail, with a view to attracting funding to undertake more detailed design work and ultimately develop this unique trail in Winchelsea more.

It is essentially a trail that crisscrosses Winchelsea township.

The Plan was prepared by Wendy Holland Director and Community Planner with communityvibe in collaboration with members of the Growing Winchelsea Arboretum Trail subcommittee members Naida Hutton, Kerry Butcher, Libby Russell, Michelle Stocks, Rod Taylor, and the Community Project Development Officer, Surf Coast Shire, Nicky Angus.



“It is envisaged that the Arboretum Trail will become a major tourist attraction for Winchelsea, thereby helping to create additional jobs and support local businesses to grow and prosper. I applaud the work of the subcommittee. They have worked tirelessly to provide quality recreational opportunities for residents and to encourage more people to walk or ride to key destinations within the town,” said John Tebbutt, President of Growing Winchelsea.

“The town is made up of four quadrants, with the outer edge of each quadrant not more than 2.5 km from the centre of town. Parts of the trail already exist, such as the Winchelsea River Loop Walk, but other parts are yet to be constructed,” said Naida, Convenor of the WAT subcommittee.

Choosing the trail instead of the car will reduce carbon gas emissions. Other

environmental benefits of the trail include the beautification of Winchelsea and the creation of cooler, more shady streets by increasing the tree canopy.

“Some of the key features that will be connected through the Arboretum Trail include natural features such as the Barwon River; historical buildings such as Barwon Park Mansion and Winchelsea Railway Station; various reserves and sports facilities such as Winchelsea Golf Club; and Winchelsea Cemetery,” continues Naida.

The trail will be enhanced through interpretive signage to inform people of Winchelsea’s connection to traditional owners, its history and its flora and fauna.

We are now in a strong position to partner with numerous community-based organisations, funding organisations and government authorities to help deliver the various components of the Winchelsea Arboretum Trail,” concludes Naida.



Interpretive Signage one step closer

An application for funding under the Tiny Towns Round 2 program through the Victorian government is being put forward by the Winchelsea Arboretum Trail (WAT) Group, a subcommittee of Growing Winchelsea. It involves, signage design, supply, construction and installation of signage along the trails in the town. It is anticipated that there will be a trailhead sign, complemented by several wayfinding and interpretive signs.

Additional support from Winchelsea Star, the Surf Coast Shire, and other community organisations has been committed. The outcome of the

application will not be known until late February 2025.

“It is anticipated that these trails will enhance the experience for runners, walkers, families with prams, cyclists and all who use the trails,” said Naida Hutton Convenor of WAT.

The Winchelsea Star has set aside a generous donation in the event our application is successful with works then set to begin in late March and be completed by September 2026.

“The trail, which covers the four quadrants of Winchelsea will be enhanced through interpretive signage and will inform community members and visitors to our town about Winchelsea, connection to its traditional owners, its history and its flora and fauna,” said John Tebbutt President of Growing Winchelsea.

Interpretive signage attracts tourists and nature enthusiasts, boosting local tourism and contributing to the economic growth of communities. It helps create memorable experiences that encourage visitors to return and explore more of what the region has to offer.

“This project aligns with the three year Winchelsea Community Action Plan and the Surf Coast Shire Economic Development Strategy 2021-2031 which lays out the future aspirations of our economic prosperity,” concludes John.



Community Bank Surf Coast -
Winchelsea, Anglesea, Lorne & District



You're invited

Annual General Meeting

Community Bank Surf Coast - Winchelsea, Anglesea, Lorne & District.
Please come along to our 2023-2024 Annual General Meeting.
All welcome.

When Tuesday 19th November

Time 5.30pm

Where The Winchelsea Shire Hall --
28 Hesse St, Winchelsea VIC

RSVP secretary@corangamitefs.com.
au or call 0427 099 410

 **Bendigo Bank**

Bendigo and Adelaide Bank Limited ABN 11 068 049 178, AFSL/Australian Credit Licence 237879 A1389132, OUT_40933451, 14/10/2024



Winchelsea's new pool, Adventure Play Space and Barwon River Loop Walk are set to open in early 2025, enhancing the Barwon Terrace-Barwon River precinct as a place for healthy activity and family fun.

Here are our latest project updates:

Winchelsea Pool



Work is progressing well, with tiling of new 25m and program pools underway and framework for the new pavilion and plant room taking shape.

Contractors are preparing to pour the concrete concourses around the pools and new splash park before starting landscaping.

The brand new facility is on track to open in early 2025 bringing fun times for families and users of all ages. Opening details will be communicated soon.

The \$8.2 million project is being fully funded by Council under its asset renewal program.

Adventure Play Space



Construction of the exciting new Adventure Play Space is underway, promising fun times ahead for youngsters.

The new space will adjoin the existing playground, which is closed during the work, and will include a flying fox with wheelchair access and accessible seat, elevated cubby pods and an embankment slide.

The existing playground will be incorporated into the new play space, with work on schedule for completion during February.

The project is supported by \$250,000 funding from Recreation Victoria and \$600,000 from Council.

Gathering space shelter

The gathering space shelter and barbecue will be reopened during November following landscaping of surrounds.

Work will include construction of a ramp providing all-abilities access to the shelter from Barwon Terrace, new paths and garden beds.

The area has been fenced off during recent weeks in preparation for the landscaping and start of construction on the adjoining Adventure Play Space.

Barwon River Loop Walk

A new bridge and viewing platforms for the Barwon River Loop Walk will soon be constructed.

Work including installation of the bridge and platforms and is scheduled for completion early in 2025.

The loop, north of the Princes Highway, will link with an existing path to the south creating a two-kilometre path connecting Winchelsea's four quadrants and better connecting the community with the river environment.

The platforms on both sides of the Barwon River will acknowledge Eastern Maar Country on the western bank and Wadawurrung Country on the eastern bank.

The platforms will feature artwork designed by Eastern Maar Guldijan artist Ebony Hickey and Wadawurrung artist Billy-Jay O'Toole.

surfcoast.vic.gov.au/winchprojects





Here for your Vitality. Care for the Whole Family

Chiropractic Care for:

Pain - Prevention - Performance
Nervous System Care - Sleep - Wellbeing
Women's Health - Paediatrics - Vitality
Stress & Anxiety - Holistic Healing

f i www.onebodychiropractic.com.au

03 52672240 Shop 4/21 Hesse St Winchelsea



SURF COAST SHIRE
WINCHELSEA WARD

CONTACT ME
www.linktr.ee/joelgrist



BACK TO BASICS



VOTE 1

Joel GRIST

Authorised by J. Grist, PO Box 191 TORQUAY VIC 3228

TRIPLE CEE Triple Cee Country Maintenance

- Local Family Owned & Operated
- Handyman
- Lawn Mowing
- Concreting
- Pressure Washing
- Acreage Garden Care
- Slashing
- Working with Children's Check
- ABN - Can bill NDIS & Age Care

0434 008 123

Discover a rewarding and secure career as a Prison Officer.

Apply now to become a Prison Officer at Western Plains Correctional Centre, Lara. Get a \$5,000 sign on bonus* plus job benefits like paid training and paid overtime.



Corrections Victoria

Hiring now

*Conditions apply.



Authorised by the Victorian Government,
1 Treasury Place, Melbourne



parkrun 34



2 November 2024

Trebeck Reserve, Winchelsea

by Neil McInnes

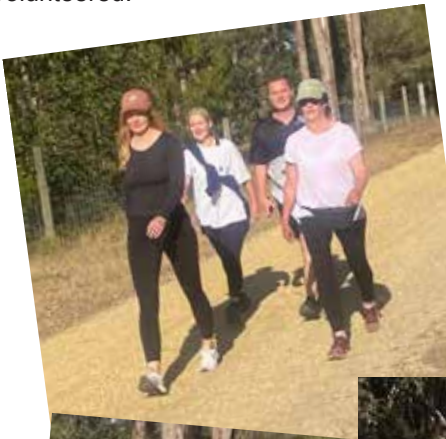
34 participants completed the course through Trebeck Reserve in perfect running and walking conditions this week. One person completed their first ever parkrun. We had visitors from Colac, Bendigo and Studley Park.

Congratulations to Stephen Alford, Simon Hose, Mariead O'Brien, Sarah May, Angie Mawson, Jodie Roberts and Janet Brown who all completed their personal best time for Trebeck Reserve. Well done everyone who walked, ran or volunteered.

Further details of this week's results can be found at trebeckreserveparkrun.com.au/results

Please check out our Facebook page for today's photos and further information.

It takes a minimum of six people each week to safely conduct an enjoyable event. Please email trebeckreserve@parkrun.com if you are able to volunteer some of your time. Tasks are simple, sociable, fun and very much appreciated.



Well behaved dogs on a short hand held leash are welcome (no waist harnesses please)

You do not need to be a runner, wear fancy Lycra or the latest high-tech shoes. Around one third of participants walk the course.

parkrun was conducted at 495 locations across Australia this week.

This event was made possible by the following volunteers: Don Smith * Murray Aisbett * Jeff Butler * Kristen Czerkiewcz * Neil McInnes * Kate McInnes * David Woodall * Liz Bennett

If you wish to join us any Saturday morning as a walker, runner or volunteer please complete the simple online registration at parkrun.com.au/register. This is free, only needs to be done once and can be used at any of the 5,000 plus parkrun events worldwide.



Community at the heart of annual report

Empowering community to drive and deliver projects was a feature in Surf Coast Shire Council's 2023-24 Annual Report, adopted at the October Council meeting.

The annual report highlighted a diverse range of community-led projects, including the Quay Reserve Community Orchard Irrigation Upgrade in Torquay, Mount Moriac Electronic Scoreboard and the vibrant mural on a 42m wall facing Winchelsea's railway reserve.

"These projects are a shining example of how a small contribution from Council can have a big impact, and how there is

nothing quite like locals' knowledge and desire to make something happen," Council CEO Robyn Seymour said.

Council's annual report shares achievements and performance over the past financial year.

The Winchelsea Pool is on track to re-open during the upcoming summer, while preliminary works on the Surf Coast Aquatic and Health Centre in north Torquay are underway.

Other achievements include:

- A review of the Surf Coast Planning Scheme and subsequent drafting of the Urban Futures Strategy, which aims to guide where urban growth can occur more sustainably.
- More than 4,500 biodiverse locally indigenous seedlings planted by school students and community

groups, to revegetate Council's 11-hectare offset planting site in Buckley.

- The development of the Circular Economy Action Plan and the implementation of the Climate Emergency Action Plan. Council's non-landfill emissions continue to trend down, with a 4.1% reduction from the previous year.

Council generated an accumulated unallocated cash surplus of \$1.9m at year-end and is holding cash and investments allocated to deliver future projects and commitments, to help meet the needs of the community.

The annual report is available at surfcoast.vic.gov.au/AnnualReport.



Coming soon to Apollo Bay!

E-Bike Rentals

by 

Wild Dog

www.wilddog.com.au

Explore Apollo Bay, Marengo and Skenes Creek by pedal power!

(03) 5237 8888
adventure@wilddog.com.au
41-45 Great Ocean Road
Apollo Bay



SUNNY GYM

GYM BUT JOYFUL

Strength, Mindfulness and Martial Arts in Winchelsea

**Kids Kung Fu
Group Exercise
Personal Training
Qi Gong**

sunnygym.com.au





It is illegal to double up.

Riding with more than one person
will cost you each a \$247 fine.

Know the e-scooter rules and ride safely.



tac.vic.gov.au/e-scooters



Textiles don't belong in your recycling bin.

Clothes, towels, linen, shoes and other textile items aren't accepted at the facilities that sort household recycling.

Consider giving away items that are in good condition, repurposing items that are damaged, or using specialised textile recycling services. If there's no other option, put them in your general rubbish bin (red lid).

A small act like recycling correctly makes a big impact.

Find out more: surfcoast.vic.gov.au/textiles



WINCHELSEA REPERTORY SOCIETY INC.



CORDIALLY INVITES YOU TO



SHAZ AND NICK'S

GREEK WEDDING RECEPTION

(A PLAY BY CRAIG WELLINGTON AND PERFORMED WITH THE PERMISSION OF DAVID SPICER PRODUCTIONS)



2024 SEASON DATES

FRIDAY 8TH NOV

SUPPORTING WINCHELSEA
BOWLS CLUB

SATURDAY 9TH NOV

SUPPORTING MODEWARRE
CRICKET CLUB

FRIDAY 15TH NOV

SUPPORTING GROVEDALE/WAURN
PONDS LIONS CLUB AND
CONNEWARRE CFA

SATURDAY 16TH NOV

SUPPORTING WINCHELSEA
REPERTORY SOCIETY

GLOBE THEATRE, WINCHELSEA

17 WILLIS STREET, WINCHELSEA

DOORS OPEN AT 6:30. PATRONS MUST BE SEATED BY 7PM

TICKETS ARE \$60 EACH AND INCLUDES A 3 COURSE MEAL (BYO DRINKS)
TICKETS TO BE PURCHASED THROUGH TRYBOOKING AND WILL CLOSE ONE
WEEK PRIOR TO EACH PERFORMANCE FOR CATERING PURPOSES.

TICKETS TO BE PURCHASED THROUGH TRYBOOKING
[HTTPS://WWW.TRYBOOKING.COM/CUZHA](https://www.trybooking.com/cuzha)



THE WINCHELSEA STAR ORGANISATION INC.

Winchelsea Star



Winchelsea Star Feedback Meetings

You are invited to come along to a monthly production meeting - with coffee of course - on the last Saturday of each month.

Your comments or suggestions, feedback, ideas for stories or coming events are welcome - or simply to say Hi!

Next Winchelsea Star Production Meeting
 Saturday 30 November 2024
 9 - 10am
 @ Sweet Thyme, Winchelsea



This Week's Star

Editor - Yvonne Stevens
 Designer - Tony Phelps

send your stories
news@winchelseastar.org.au

LOCAL NEWS and ARTICLES WELCOME

Include name and address of the sender
 Email news@winchelseastar.org.au
 Leave hard copy at IGA Supermarket

DEADLINE 5pm Fridays

4pm Sundays - hard copy articles left at IGA
 6pm Sundays - sports results and weekend events

ADVERTISING

advertising@winchelseastar.org.au 0408 102 802

free digital subscription

winchelseastar.org.au

JOIN US ON

FACEBOOK

facebook.com/TheWinchelseaStar

production

Editors: Cerrie Fogan, Yvonne Stevens, Judy Cameron
Advertising: Sasha Gauntlett, Neil McInnes
Design: Susan Corby, Tony Phelps
Printed by: Winchelsea Community House
Website by: Winch Websites

committee

President: president@winchelseastar.org.au
 Neil McInnes
Treasurer: treasurer@winchelseastar.org.au
 Cathy Cheadle
Secretary: secretary@winchelseastar.org.au
 Tony Phelps
Members: Mick O'Mara, Linda Carter, Susan Corby
 Sasha Gauntlett, Judy Cameron,
 Yvonne Stevens, Cerrie Fogan



© Winchelsea Star Org. Inc. All rights reserved
 Winchelsea Star Organisation Inc.
 Reg. No. A0053999F ABN 75 941 529 279
winchelseastar.org.au PO Box 5 Winchelsea 3241

Views expressed are not necessarily those of the Winchelsea Star or Committee. The Winchelsea Star reserves the right to edit or not publish any article.



Winchelsea Star COMMUNITY NOTICEBOARD

email editor@winchelseastar.org.au or
leave at Winchelsea IGA

WINCHELSEA OP SHOP

Opening Times:
Fri-Mon from 10am-4pm
Drop off goods between 10am-2pm

WINCHELSEA LIONS CLUB

Environmentally friendly
compressed paper bricks for your fire.
Save on the rising cost of wood.
Pack 4 bricks \$5 - Roll small rolls \$2
Contact Alan 0476 475 422

WINCHELSEA PICKLEBALL

Winchelsea Leisure Time Centre
Wed 7-830pm or Thurs 10-11.30am.
All equipment supplied,
wear suitable footwear.
Lesley Mathison 0438 672 197

DIAMOND DOT DAY

Will be the 16th November
Senior Citizens Rooms Winchelsea
11.am till 4 pm
Everyone welcome

WINCHELSEA TENNIS CLUB

JUNIOR COACHING

Mondays from 3.30pm
with experienced Nicole Mullen, \$10

SOCIAL TWILIGHT TENNIS

Monday evenings from 6.00pm.
All Welcome!

WINCHELSEA GIRL GUIDES

Are you interested in joining an
enthusiastic, self-motivated team working
with girls, 5-15 years?

Winchelsea Guides are seeking female
adult volunteers. Help us provide a
stimulating program giving leadership
development opportunities for girls, as
well as providing fun and friendship.

Phone Yvonne 0448 672630



Social Bridge is played
EVERY TUESDAY
10.30 AM-1.00 PM

SENIOR CITIZENS CENTRE
36 Harding Street Winchelsea

New players always welcome

Elaine Atkinson 0458 009 616

REMEMBER REMEMBRANCE DAY

Winchelsea RSL will be conducting a
Remembrance Day service on Monday
November 11th at 10-30.
At the cairns, Main St Winchelsea.
Wreaths, poppies, rosemary
may be lain.
All welcome.

FOR SALE

One Laco mower and whipper snipper,
and small generator. \$50 the lot. Also a
single bed, king size new mattress and
white heart shaped bed head. Contact
52 672 954. Must sell as no longer
used.

A thriving community...

Winchelsea

Growing Winchelsea Inc Annual General Meeting

Monday 11 November 2024

6.30 pm - 8.30 pm

Shire Hall

Winchelsea House

Presentations:

- **Graham Kenafacke - 100 year celebration of Grandstand 2025**
- **Naida Hutton - Concept Plan - Winchelsea Arboretum Trail**
- **Elaine Atkinson - Mud Hut - Cob Wall Installation 1-9 March 2025**
- **Carols by the Barwon 7 December 2024**

RSVP by Thursday 8 November 2024

For catering purposes please contact Elaine Atkinson

secretary@growingwinchelsea.com

Mobile 0458009616



Winchelsea
Community Market

Shire Hall
9am - 1pm



FIRST SUNDAY OF EACH MONTH

10 Nov 2024	5 January 2025
1 Dec 2024	2 February 2025
	2 March 2025
	6 April 2025
	4 May 2025
	1 June 2025



Café La Hoot

have you tried
'owl' coffee?

1 willis st cafelahoo@gmail.com 0407 528 999

TRENCHES & HOLES PTY LTD.



PHILLIP ROBERTSON

☎ 0427 672 945

WINCHELSEA

- General Earth Works
- Driveways
- Trencher
- Kanga Loader
- Grader
- Excavator Work (3.5 & 6.5 Tonne)
- Tip Truck
- Rock Breaker
- Post Holes & Shed Footings

A.B.N 74006896898

Water Delivery



WAZZA'S
WATER CARTAGE

Stainless Tanker Up to 22,000 ltr loads
Barwon Water Registered

Domestic & Rural Water Supplies

Call Wazza

Mob: 0428 877 260

Email: wazza@wazzas.com.au Web: wazzaswater.com

M & L DRAYTON

PLUMBING SERVICES

REG No 24356 C/A No C02594

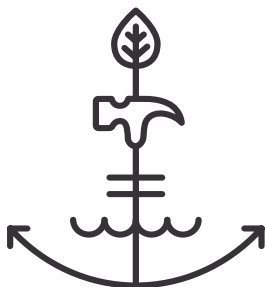
- Domestic and Rural Plumbing
- Roofing
- Sewerage & Septic
- LPG & Natural Gas Connections
- Motorised Drain Cleaning
- Backhoe Hire

Phone Mark 5288 7244

PO BOX 98 WINCHELSEA 3241

Mobile 0428 520 142

GUIM DESIGNS



CARPENTRY

- DECKS - SAUNAS
 - FLOORING - PERGOLAS
 - WEATHERBOARDS
 - HORSE SHEDS
 - CLADDING - FENCES
- ALL THINGS TIMBER AND MORE...

INSTAGRAM guim_designs

CALL PAT ON

0401 232 674

Meet Your Local Businesses

We love to showcase the local businesses of the Winchelsea region. Know a business that could be next? Head to winchelseastar.org.au/contribute/promote-a-local and fill in the quick questionnaire.

Helios Solar and Gutter Cleaning

When did you start trading?

September 2024

Why did you decide to start your business?

To provide a service which I felt would be beneficial, for example most houses should have Solar Panels cleaned once a year, but in reality most have never had them cleaned. Having them cleaned can help panels last longer and importantly help with energy efficiency which will save money in the long run. I have always enjoyed working outdoors and felt I have skills to do the job well.

What are some of challenges you encountered?

Being a Winchelsea local, a lot of my work requires substantial travel. I have been taking jobs as far as Melbourne as that's where the demand is. Also some really dirty panels and gutters that hadn't had any love for many years. While making the job more difficult, I am always up for the challenge. Lastly, just getting my name out there, it's a challenge to get known when just starting.

What do you wish you had known before you started?

Probably more about SEO and google advertising, as most things are online now and so many more people are using google and social media.

What type of education helped you to open/run/manage your business?

Doing courses relating to working with heights certainly helped, its amazing the little things that can make such a big difference.

How many employees do you have?

Just me, I am currently a one man operation, but who knows this could change in the future.

Describe a typical day in your business?

Being prepared for the type of job that is required, making sure I have the right equipment, sunscreen and hat. Driving to wherever I am needed. Often climbing up and down roofs is good exercise and making sure I am taking photos so my customers are happy and informed with what has been done before and after.

For contact details, see advert on Page 18.



Photos of Before (underneath) and After (on top)



Winchelsea Churches



St John's Catholic Church

Father Joseph Panackal
0404598558

Harding St, Winchelsea 3241
Mass times have been changed to 6pm
whilst daylight savings are on.
Every Saturday night.

St Thomas' Anglican Church

Rev'd Phil Jacobson
0477 672 042
stthomaswac@gmail.com
Barwon Tce, Winchelsea
Service 10am

Winchelsea Uniting Church

0475 777 301
uca.winchelsea@gmail.com
Hesse St, Winchelsea 3241
Services 9.30am Sundays

Thought for the Week

You do not determine your success by comparing yourself to others, rather you determine your success by comparing your accomplishments to your capabilities. You are 'number one' when you do the best you can with what you have, every day.

John Bader,
Former U/C Accredited
Lay Preacher



Department of Health



Board director opportunities at Hesse Rural Health

The Minister for Health, the Hon. Mary-Anne Thomas MP, is pleased to invite applications for part time board director positions at **Hesse Rural Health**.

The positions start on 1 July 2025 and appointments are for up to three years. These positions provide an exciting opportunity for Victorians to contribute to the health and wellbeing of our communities. Applicants are selected for their capabilities, including personal and professional experience, knowledge, and skills that contribute to the strategic leadership and oversight of health care for the Victorian community.

The Victorian Government is committed to ensuring that government boards reflect the rich diversity of the Victorian community. This includes diverse leadership of the health system that represents the variety of backgrounds and cultures of Victorian communities to enable the vision of achieving the best health, wellbeing and safety for everyone.

To build an empowered and engaged leadership across the health system, our priority areas are people of all ages, First Nations people, people who live with a disability, people from culturally diverse backgrounds, people who identify as LGBTIQ+, the promotion of gender equality and upholding human rights.

Applicants must be able to demonstrate the capabilities identified in their applications.

Applications close at **midnight Sunday 24 November 2024**.

Further information about Victorian health service boards and how to apply can be found at www.health.vic.gov.au/board-applications

For all enquiries regarding the Board, please contact **Kate Lockhart, Executive Assistant** on (03) 5267 1200 or email: kate.lockhart@hesse.vic.gov.au



Open Day

Sunday 24th November 2024
Open 10am - 4pm

The Deans Marsh market is open 2:30pm - 6:30pm on the same day

- Explore over 10km of grassy pathways which wind their way through 40 hectares of some of the world's most remarkable tree species
- Enjoy avenues of trees and vistas stretching the full width of the Arboretum
- Bring a picnic blanket and refreshments ready to laze away a couple of hours in your favorite grove of trees
- Have a quiet sit in the "Neolithic" rock Henge
- Take a stroll along an undulating graded track, following the course of a rehabilitated section of the Deans Marsh creek



12 Deans Marsh/Lorne Road, Deans Marsh

Entry opposite former Martians Cafe (parking in the cafe carpark)

Informational talk by the Arboretum Designer at 11.30am at the Henge
Guided creek walk at 2pm from north gate.

Map of planted tree species available at the gate, dogs on a leash at all times.

Gold coin donation entry

www.frogwood.com.au

Colac Players' Three New Australian Plays

Three original and recent Australian plays will be presented in each of six performances in late November at Cororooke by The Colac Players.

Under the heading "Magpies, Midnight and Miracles", these performances promise to make you laugh, but also may cause you to reflect on life's little quirks.

Also, there'll be a mix of familiar and new faces in the casts (totaling 13 actors), as well as among the directors.

Two of the directors will be very familiar to all Players' fans: Rhonda Mahoney, and David McKenzie. The third director, less well-known, but with recent success as debut director of "Fireflies", is Jen Maclean.

It was Rhonda who found these three plays, after meeting the playwright (Paula-Mary Camileri) at a theatre festival on Norfolk Island last year, at which Paula-Mary was the adjudicator.

Rhonda's play, "The Magpies" features Helen, an empty-nester who has filled her nest with boisterous birds who have strong opinions about Helen's dating life, fashion choices, and food.

"It's funny - and romantic", says Rhonda, "but the play also reminds us that birds



may be smarter than we generally think". "And it also reveals how we can sometimes misunderstand those who are too often classed as other".

Of Jen's play "Nightshift", she says "I will never think the same about a vacuum cleaner!"

The play involves four nurses on nightshift in a hospital, surviving on coffee and iced vovos while juggling emergencies and personal difficulties (including the said vac.)

David's play "The Angels" features five hard-working angels who intervene to save lives on earth every day. But before they became angels, they all had family and friends and their own earthly story.

David adds "Even as angels, they run into emotional challenges as well as joys"

He says he's very excited about all three plays and feels sure that audiences will love them.

Playwright Paula-Mary is planning to attend the opening performance on November 22, giving patrons an opportunity to meet her.

As always, nothing would happen without a dedicated back-stage crew, numbering 10 people covering props, costumes, publicity, ticketing and many other things.

Performances at Red Rock Regional Theatre and Art Gallery, Cororooke

November 22, 23, 28 and 29 at 7.30 pm
November 23 and 30 at 2 pm.

Tickets

RACV office 191 Murray St, Colac

On line <https://www.trybooking.com/CWDRC>

Further information

Ros Scanlan 0417 597 186

Peter Greig 0427 110 023



Magpies, Midnight & Miracles

22 – 30 Nov 2024

Evenings 7.30pm – Matinees 2.00pm

BOOK NOW! @ RACV Colac or
www.trybooking.com/CWDRC

RRRTAG - 520 Corangamite Lake Rd, Cororooke





mainly music est. 1997

Fun, Interactive music sessions for pre-school children (0-4 y.o.) and parents/caregivers

When: Mondays from 10 to 11 am (runs during school terms)

Where: St Thomas' Hall
25 Barwon Tce.

To Enquire ring: 0407838256



Serviceing the Surf Coast, Geelong and surrounding areas

Helios Solar and Gutter Cleaning

Windows/house cleaning and other odd jobs. Discounts offered to seniors.
<https://helios-solar-cleaning.com.au/>
Call 0493 244 812



5234 6585 0417 385 984

For all your septic tank, grease traps and interceptor pits servicing.
Locally owned and operated

DAVIC AG

CONTRACTING AND EARTHMOVING

For all your harvesting needs

Mowing, raking, round bailing, paddock prepping, spreading and sowing

Call Dave on **0417 579 973** Bambra



Your Taxation & Superannuation Specialists.

Winchelsea

5267 2673

www.surftax.com.au

OZ TREES NURSERY & TREE PLANTING SERVICES

- Affordable seedlings—over 200 species
 - Complete plantation service—farm forestry, shelter, aesthetics
 - Deep ripping & mound ploughing. Rotary bed forming
 - Our experienced staff will help you select species for your site conditions and needs
- Also available—tree planting tools, milk cartons, plastic tree guards & bamboo stakes

569 Warrowie Rd. Colac
P: 5233 6280 F: 5233 6393
E: info@oztrees.com.au
W: www.oztrees.com.au
Open Monday—Friday
9am—4:30pm



Phone OzTrees for professional advice,

Dance ENROLMENTS NOW OPEN!
Winchelsea
Dance Classes
REGISTER NOW

JAZZ - THEATRICAL TAP - HIP-HOP
CLASSICAL BALLET - CONTEMPORARY
Pre-School - Adults
Beginner - Advanced Levels

www.melsdancecentral.com.au

direct TEMPORARY FENCING

FOR HIRE - SUPPLIED & ERECTED - 7 DAYS
GEELONG - BELLARINE - COLAC - SURF COAST
PHONE CAM 0417 310 800

DownRyte Excavations

- Excavations
- Drilling and Piling
- Rock Placement
- Tree and Stump Removal

Sean Hunwick
Mobile: 0409 447 288
Email: downryte@activ8.net.au



Helping Even More Kids Get Active

\$200 vouchers are available for families to help with the cost of living and give even more kids the opportunity to play the sport they love.

The Get Active Kids Voucher Program will receive an extra \$3 million – following the initial uptake of vouchers from parents across the state.

The vouchers help parents cover the costs of sports memberships, registration fees, uniforms and equipment. Eligible families who hold health care cards or other concession cards can apply for vouchers or a reimbursement of up to \$200 per child.

From soccer to dancing, there are more than 70 sports and more than 2,100 activity providers included in the program across the state – meaning kids across Victoria have the chance to take part in a wide range of sports and activities.

The program is open to kids aged 18 and under who are named on a Commonwealth Health Care Card or Pensioner Concession Card, and named on a Medicare Card.

A special consideration stream is also available to support children in care, temporary or provisional visa holders, migrants and international students.

Families can apply for the vouchers online before redeeming them at an activity provider like a local sporting club.

For more information and to apply for a voucher visit getactive.vic.gov.au/vouchers.

Open Day - Surf Coast Mindfulness with Horses



Surf Coast Mindfulness with Horses offers sessions with horses that enables people to learn about themselves through their experiences with animals. This is called Equine Assisted Learning (EAL) and is a unique approach where participants are offered safe experiences with horses to learn social and emotional skills, personal development, and professional development skills (e.g. leadership and team building). EAL is also used for clients in growing self-confidence, self-esteem, and working through challenges in a way that expands awareness of their own thoughts and behaviour patterns that may no longer be serving them well.

We provide interactive horse experiences: Immerse yourself in the world of horses and how they enable us to be calm, to slow down, to breathe and feel. Connect with our gentle and intuitive horses and experience the magic of human-horse connections.

Join us for a cup of tea and a Boston bun on our Open Day!

Surf Coast Mindfulness with Horses provides a serene and healing escape from the chaos of everyday life, creating the ideal nature-based setting for self-discovery and growth.

Informative Session: Meet Genevieve and Danielle who will guide you through the unique ways horses contribute to personal development, team building and emotional well-being and the amazing benefits of equine assisted learning and therapy.

Community: A great way for the community to get together, connect and enjoy nature and horses. Meet like-minded individuals who share an interest in holistic well-being. Surf Coast Mindfulness with Horses is a community that values inclusivity, kindness and growth.

Open Day is on Friday 8th November from 3pm – 5pm

Address: 396 Thielemann's Rd. Gherang.

Email: genevieve@mindfulnesswithhorses.com.au

Web: www.mindfulnesswithhorses.com.au

Feel free to join us!



Winchelsea Community House Inc. A6247K
28 Hesse Street, PO BOX 75, WINCHELSEA, Vic. 3241
Phone: (03) 5267 2028 **Email:** manager@winchhouse.org.au
ABN: 48 932 340 254

FIRST AID & CPR TRAINING

Saturday 9th November, 2024

Winchelsea Shire Hall

Full First Aid 8.30am - 2.30pm \$170

CPR Only (8.30am-10.30am) \$70

Bookings - reception@winchhouse.org.au

CHATTY CAFÉ

“Sip, Chat, Share, Care”

Every Friday 10.30am – 12.30pm

Winchelsea Shire Hall

FREE, Everyone Welcome.

Collection tin for donations.

Carer's Corner

Come along, connect with other carers, have a cuppa and a chat, and share useful resources.

29th Nov

11.00am – 12 noon

At the Winchelsea Shire Hall

Collection tin for donations.

Tai Chi

Friday Mornings 9.00am – 10.00am

In the Helen Verity Room,
Winchelsea community house

\$10 per session

Crochet Group

Every Second Saturday

1.30pm in the Winchelsea Community Centre

Next Group 16th Nov

\$5 per class, book your spot at
reception@winchhouse.org.au

**SOMETHING EXCITING IS HAPPENING IN
WINCHELSEA!**

*La
Casetta*

Community Dinner

AT THE WINCHELSEA SHIRE HALL

November 29th

More Details to come...

We Need You!

COMMUNITY

EVENTS

VOLUNTEERS

WANTED

If you are interested in getting
involved please let reception know
or email

reception@winchhouse.org.au

**Let us know if there is a Program, Activity or
Event you would like to see at Winchelsea
Community Centre or the Shire Hall.**

**The Winchelsea Community House aims to provide a space to connect with others in our
community through a wide range of programs and activities.
There are many opportunities to learn new skills or further develop existing ones for fun, for your
resume or for your confidence and mental health.**

Winch House AGM Manager's Report, 2023/4

by Wendy Greaves, Manager

The 2023/2024 year has been a good one and we are pleased to report a healthy financial result which has been achieved by lots of hard work and dedication by all staff and volunteers connected with Winch House.

We are very happy to have seen a much more normal year following on from several very disruptive covid years. The Community are reconnecting or connecting for the first time with us and are bringing all sorts of wonderful suggestions and ideas with them.

AUSPICE GROUPS

As at 30th June, 2024 Winchelsea Community House has six auspice groups being:

- Winchelsea Men's Shed/Community Garden
- Wensleydale Rural Community Group
- Winchelsea Youth Leisure Drop-In (WYLD)
- Wurdale & Surrounds Recovery Network
- Conquer the Corrugations
- Hesse Rural Health – Food Project

Each of the groups have provided a report which is attached in this annual report.

GROUPS OF THE HOUSE

Craft Group- The Craft group continue to come in on Wednesday's during the term and work on their individual projects whilst enjoying each others' company and sharing ideas, skills, recipes and food.

The skill and talent of this group is amazing and they produce such beautiful work.

They are a very supportive group and help each other through the tough times that often present.

Crochet Group –The ladies and one solitary man who attend the group have had a great year once again, We are thinking about changing our name to the Saturday Afternoon Craft group as we are also catering to knitters as well (and we never said it was just a Crochet Group). Again, we have a core group that attends regularly and we recently acquired a new member who has lived in the region for almost forty years and didn't know we existed until her husband purchased a Winchelsea Star! Projects get completed and more started, there can never be enough Crochet (and knitting) in the World.

Come join us if you want to give Crocheting a try!

First session is free and then \$5 per session.

Thursday Knitting Group- A small group of ladies come together to knit and chat over a cuppa on Thursday mornings from 10.30 to 12.

Everyone is welcome to this small social group.

Toy Library- Our Toy Library has just had a complete overhaul and lots of new toys and resources have been purchased following receipt of a government grant.

Our Committee Treasurer Madeline has spent many hours on this task and we thank her enormously for all her hard work.

Toys can be borrowed at any time when the office is resourced which is usually Monday to Friday between 9 and 2. You can borrow 2 toys for 2 weeks for \$2.

Be sure to come in and have a look at it.

SERVICES

Office services continue to be very much used, especially photocopying, printing and assistance with all types of online renewals such as passports, working with children checks, employment forms etc.

We are happy to help with most things but suggest that you call beforehand to make sure we are free to assist you.

VOLUNTEERS

Volunteers are a key part of our community organisation and are very welcomed. We have a variety of volunteer roles at Winch House including Toy Library, Occasional Care, Gardening, Front Desk Reception or being a member of our Committee of Management. We thank our current volunteers for all their hard work during the year.

OTHER

Our arrangement with managing the Shire Hall space has been extended until 30 June 2025 in order to align with SCS budget year. We continue to experiment with lots of different things in that space. This is a space for all to use so if you would like to have an event or gathering please contact us for a quote.

Our childcare service is still very popular, especially with lots of under 3 year olds looking for pre kinder places. Unfortunately due to government staff ratios we have very limited availability but it is always worth enquiring as circumstances are changing for families all the time and places do become available.

We are always up for a chat and welcome you to come in and tell us what you would like to see happening at the Community House and we will try our best to make it happen.





Knuckey's Winchelsea
Ph: 5267 2011

Knuckey's have in stock a complete range of batteries to suit tractor, heavy machinery, cars, utes

The largest range of the best oil for your vehicles—**CASTROL**—
'when only the best will do'

The largest range of V belts.
 A, B, C, D M Sections
 Bolts and nuts for all occasions
 Steel cut to size

WINCH WEBSITES
 WEB SOLUTIONS SIMPLIFIED.

WEBSITES

GROW business
INCREASE reach
SAVE time

Find out what a website could do for you
winchwebsites.com.au
 04 887766 20



WINCHELSEA LIONS CLUB

PAPER RECYCLING

Paper depot rear of Senior Citizens Rooms
 Harding Street
 NEWSPAPERS, MAGAZINES,
 PHONE BOOKS WANTED

RAISING FUNDS FOR OUR TOWN & DISTRICT
 0408 520 606

WINCHELSEA LIONS CLUB
 ARE SELLING ENVIRONMENTALLY FRIENDLY SHREDDED PAPER COMPRESSED BRICKS FOR YOUR FIRE
 SAVE ON THE RISING COST OF WOOD BY INCLUDING PAPER BRICKS AS WELL

PACKET OF 4 ROARS (BRICKS) \$5
 ROLL OF PURRS (SMALL ROLLS) \$2

AVAILABLE AT LIONS PAPER SHED
 36 HARDING STREET
 SATURDAY MORNINGS
 10AM - 12 NOON
 FROM 4TH MAY UNTIL SOLD OUT

EFTPOS AVAILABLE
 CASH ACCEPTED

Winchelsea Men's Shed

For The Community
 51 Hesse Street
 Every Wednesday from 9:30am
 New members always welcome

For more detail contact:
 Ray Atkinson (Co-ordinator)
 0407 839 139
 or
winchmenshed@gmail.com

Need a job done?
 Woodworking jobs,
 furniture repairs, small jobs.
 Drop in and talk to us.

WANT TO JOIN PROBUS?

Enjoy fellowship with other members
 Enjoy trips & outings
 Listen to guest speakers

Contact Lorraine
0417 467 927

DRIVEWAYS, CARPORTS, CROSSOVERS,
 FOOTPATHS, SHED SLABS, STAIRS
 HOUSE SLABS, EXPOSED, SEALING & MORE

CONTACT ALISTER NOW FOR A QUOTE
 0411871950
AMACONCRETING1@GMAIL.COM

WANT TO JOIN LIONS?

- Enjoy fellowship with other members
- Provide service for the local community
- Raise funds for local, national & global causes

Contact Murray
0409 405 645



WW1 Book Launch at Inverleigh a Great Success

by Christine Windle

The afternoon of Sunday the 27th of October saw the Inverleigh Public Hall buzzing with people who had come for the launch of Robert Wight's new book, *Inverleigh and Murgheboluc District Soldiers in the Great War 1914 – 1918, Individual Stories of Service and Sacrifice*. Rob is a member of the Inverleigh Historical Society and the Western Front Association.

The event began with a talk by the author on the range of experiences of servicemen in WW1 using soldiers from the book as examples. The Inverleigh Historical Society and the Inverleigh RSL sub-branch co-hosted the event.

The large crowd included many people with connections to soldiers in the book as well as others with an interest in military and local history. They enjoyed looking at the WW1 memorabilia display and chatting, catching up and meeting new connections over the delicious afternoon tea.

The book includes a history of the AIF involvement in WW1, many images and the individual stories of 143 soldiers in narrative form. Sales were brisk with the book being wonderful value at \$45.

We are hoping that more people with connections to the soldiers in the book will contact the Inverleigh Historical Society and share photos, letters and memories. The book is now available for purchase. Please contact Christine on 0403 267 286 or Inverleighistsoc@gmail.com.



Rob Wight, author, giving a talk on WW1 using Inverleigh and Murgheboluc soldiers as examples





WINCHELSEA FACEBOOK



Non-profit community Groups and Pages

What's on in Winchelsea	facebook.com/WhatsoninWinchelsea
Winchelsea FREE	facebook.com/groups/winchelseafree
Winchelsea Community Information	facebook.com/groups/207538644446972
Winchelsea Classifieds 3241	facebook.com/groups/216942861684082
Winchelsea Lost and Found	facebook.com/groups/768187693217518
Winchelsea Op Shop	facebook.com/HospitalAuxiliaryOpShopWinchelsea
Winchelsea Shire Hall	facebook.com/WinchelseaShireHall
Winchelsea Community House	facebook.com/winchelseacommunityhouse
Winchelsea Coronavirus Community Support Group	facebook.com/groups/2676957719207927/
The Green Winchelsea Residents	facebook.com/groups/515322772623126
Growing Winchelsea Inc	facebook.com/growingwinch
Winchelsea Star	facebook.com/TheWinchelseaStar
Winchelsea Movie Club	facebook.com/winchelseamovies
Winchelsea Community Market	facebook.com/100083362387611
Winchelsea Land and River Care Group	facebook.com/envirowinchelsea/
Upper Barwon Landcare Network	facebook.com/UpperBarwonLandcare
Winchelsea & District Historical Society Inc	facebook.com/Winchelseaanddistricthistoricalsociety/
Winchelsea Wildlife Shelter	www.winchelseawildlifeshelter.com/
SCARS - Surf Coast Animal Rescue Service	facebook.com/groups/415211698950674
Winchelsea Gardeners	facebook.com/groups/779878518703025
Winchelsea & District Historical Society	facebook.com/Winchelseaanddistricthistoricalsociety/
Winchelsea Repertory Society Inc	facebook.com/winchrep/
Winchelsea Globe Theatre	facebook.com/Winchelsea-Globe Theatre-164790897641678
Winchelsea Uniting Church	facebook.com/winchelseaunitingchurch
St Thomas' Anglican Church	facebook.com/StThomasWinchelsea
St John the Baptist Catholic Church	facebook.com/pages/Winchelsea-Catholic-Church/101775670163180
Winchelsea Mainly Music	facebook.com/groups/668500343953191/
Winchelsea Health Club	facebook.com/WinchelseaHealthClub
Winchelsea Playgroup (School terms only)	facebook.com/groups/551663435367031
Winchelsea Girl Guides	www.guidesvic.org.au/
Winchelsea/Modewarre Scouts	facebook.com/1stModewarreScouts
Winchelsea Fire Brigade	facebook.com/winchelseafirebrigade/
Winchelsea SES	facebook.com/groups/WinchSES
Country Women's Association - CWA Winchelsea	facebook.com/pg/CWAWinchelsea/
Winchelsea Bowls Club	facebook.com/Winchelsea-Bowls-Club-533783333344345/
Winchelsea Blues Cricket Club	facebook.com/groups/8999049476/
Winchelsea Blues FC	facebook.com/WinchelseaFNC/
WYLD Winchelsea Youth Leisure and Drop in	facebook.com/groups/569737570027065/
Lions Club of Winchelsea	facebook.com/LionsWinchelsea
Winchelsea Probus	facebook.com/893535194971083
Winchelsea Golf Club	facebook.com/winchelseagc/ facebook.com/groups/1324943804676697

MRP Steelworx

Matthew Partridge
p 0418 672 334
e mrpsteelworx@yahoo.com.au

Welding Service

- Onsite welding
- Farm maintenance
- Farm machinery & equipment repairs
- Cattle & sheep yards
- Custom built trailers
- Supply & install gates



5234 6585 0417 385 984
For all your domestic & stock water.
Also available for road and civil construction
Local owned and operated.

52672192 R & K Creative Framing
for all your framing needs

free quotes
pension discount
specialist in Age & Disability Modifications

Ray & Kim Jansen
10 Witcombe st
Winchelsea 3241
0414672192

Ray The Home Maintenance HANDYMAN
abn 47929623462



Winchelsea Supermarket

Trading Hours
Monday to Saturday
8.30am to 7.30pm
Sunday
10am to 7pm
Ph: 5267 2676
29 Main St, Winchelsea

Antique Repairs

By **Doug Burns** est. 1976

- All Furniture
- French polishing
- Carving
- Veneering
- Wood Turning
- Porcelain



Unusual Requests Welcome

180 Barwon Terrace, Winchelsea

0428 672 704

All About **Mowers & Chainsaws**

Repairs to all makes and models of ride on mowers, domestic mowers, pumps, chainsaws, brushcutters and small engines.

Trading Hours: Mon - Fri 8am - 5pm Saturday 8am - 12 noon

5267 2266 Cnr Princes Hwy & Lennox St Winchelsea
www.allaboutmowers.com.au
accounts@allaboutmowers.com.au

FERRIS COX STIHL BRIDGES & STRATON VICTA



SOUTHERN GRAIN STORAGE PTY. LTD.

AG SUPPLIES FERTILISER GRAIN STORAGE SEED CLEANING

(03) 5267 2351

Winchelsea Men's Shed



For The Community
Men's Shed Kindling/Offcuts
Bags of Kindling/timber offcuts are available for pick up from the Men's Shed on Wednesday's from 9.30 to 2.30.
If you need a delivery made you can call Bill on 0438 083 373. The price for a bag of kindling is now \$7.00 (up from \$5.00).
Nesting Boxes
Bird or animal nesting boxes are available from The Men's Shed. These can be made to order. Call in on any Wednesday to have a chat.

WINCHELSEA CONCRETING

• Driveways • Sheds • Decorative Concrete • Raft Slabs

Robert Murphy

☎ 0438 235 237

✉ winchelseaconcreting@outlook.com

SERVICES & ACTIVITIES IN WINCHELSEA

VLINE TRAIN SERVICES

TO MELBOURNE:

Mon - Fri 6:41 am, 7:57am, 11:14am, 2:08pm, 7:23pm
 Sat - Sun 9:26am, 1:30pm, 7:18pm

TO WARRNAMBOOL:

Mon - Fri 8:56am, 11:55am, 2:50pm, 5:27pm,
 6:45pm, 8:50pm
 Sat - Sun 8:47am, 2:46pm, 8:34pm



WINCHELSEA GIRL GUIDES

Our Unit meets at the Catholic Church Hall,
 Harding St Winchelsea each Monday 4.30pm-6pm
 All girls 5yrs- 15yrs Welcome!
 Contact Yvonne Orchard 0448 672 630
 or Emily LaPorte Phone 0476 719 381



COUNTRY WOMEN'S ASSOCIATION

7pm second Wednesday of month
 Winchelsea Senior Citizens' Hall



1st Modda & 1st Winchelsea SCOUT GROUP

Joey's: Tuesdays of school term 5-6pm
Cubs: Mondays of school term 6:30-8pm
Scouts: Tuesdays of school term 6:30-8:30pm
 All at Modewarre Hall, Cape Otway Rd
Venturers: Wed at Walton's Rd Venturer Den
 Contact Marie McPadden 0409 330147

Join us. *A role for everyone*



Nationally accredited training to help our community.
 Pop in to meet your crew **Wednesdays 7:30pm**

Winchelsea Unit 325 Moorley Drive 132 500

BUS TO THE HUB



For reservations on the weekly bus
 to the Eastern Reserve Hub,
 please phone 52671202.

Winchelsea and District COMBINED PROBUS CLUB



Senior Citizens Rooms,
 Harding St, Winchelsea.
 New members always welcome.
 Enquiries Lorraine 0417 467 927

SURF COAST MOBILE LIBRARY

Hesse St, Fridays, 2pm-5pm
 Surf Coast Mobile Library
 parked in Hesse Street (outside Shire Hall)
 Fridays 2:00 and 5:00pm unless it is a Public Holiday.



SOCIAL BRIDGE
 Every Tuesday 10.30 am - 1.00 pm
 Senior Citizens Centre
 36 Harding Street Winchelsea
 New players always welcome
 Contact Elaine Atkinson 0458009616

WINCHELSEA TAXI

0429 672 888 or 5267 2888
 Wheelchair accessible
 10 seater bus available.

WINCHELSEA TRANSFER STATION 55 Cressy Road, Winchelsea

Tuesday	2pm-4pm	Saturday	1.30-3.30pm
Thursday	2pm-4pm	Sunday	9.30-12.30pm

Closed on Christmas Day,
 but open on other public holidays
 that fall during their normal operating hours.
www.surfcoast.vic.gov.au/disposalsites



WINCHELSEA PLAYGROUP

Every second Thursday 10am-12pm
 St Thomas Anglican Church Hall
 cnr Barwon Tce and Hopkins St, Winchelsea
 Contact: Danni Menzies 0432019944
winchelseaplaygroup@gmail.com
 Facebook - Winchelsea Playgroup 2019
New families welcome

WINCHELSEA HISTORICAL SOCIETY

Country Womens Association

Mrs Wheal of Colac formed the branch in 1934. She was remembered for her weekly broadcasts on CWA news and the Sunshiners Club on radio 3CS.

Mrs Mary Lowrey and her mother Mrs SCHROETER were foundation members.

When the branch was formed names were embroidered on a linen tablecloth, including the very famous name of opera singer Marjorie Lawrence. The CWA donated five shillings to purchase a floral bouquet for her when she sang at the Melbourne Town Hall.

There were eighty members in 1935.

The Branch met in the Shire Hall for almost 60 years.

They had market stalls, presented curtains to the Shire Hall, assisted the Comfort Fund for the war, and had a Cabaret Ball, combined with the CWA Younger set, in 1948. In 1949 a choir was formed, recipes were sent to headquarters in 1950, and in 1959 they were invited by the Red Cross to plant trees to mark 100 years.



In 1963 a seat was donated for the swimming pool.

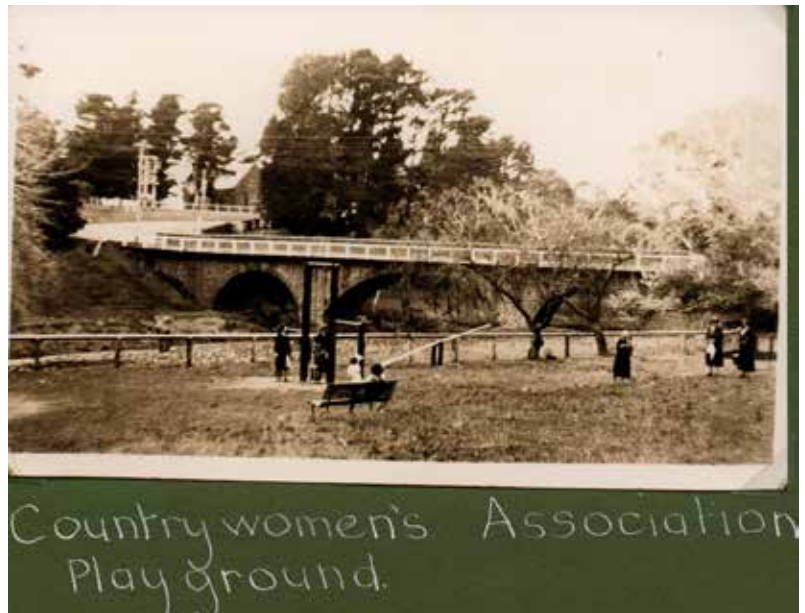
Demonstrations were held and the Branch exhibited at the Colac Show for many years.

Social evenings were held and the Branch asked the Shire Council for permission to put a playground at the Barwon River, near the bridge. (See photo)

In 1938 the members requested a Baby Health Centre and the building began. Mrs Wainwright dug the first sod.

A children's library was run by the CWA.

In 1980 Mrs Jean Nash represented the CWA at the conference at Hamburg, Germany where they celebrated the 50th Anniversary of country women of the world.



TREE WORKS & STUMP GRINDING



Fully insured and qualified climbing arborists.

Slashing and fire preparation.

FREE QUOTES
0488 553 650
Mathieu Vaupres

www.colactrees.com.au

Green Lead Electrical
Connecting you to a greener future
REG. 23018

0467 097 101



Servicing Geelong & the Surf Coast

Specialising in all residential electrical work including:

- Switch board & lighting upgrades
- Outdoor lighting
- Electrical safety checks
- Energy efficient LED lighting
- Ceiling sweep fans & ventilation
- Energy saving advice

Phone Martin Wilkinson:

0467 097 101
greenlead@outlook.com

1132268-CC18-14



Winchelsea AUTO SERVICES
One stop auto shop

- ❑ LOG BOOK SERVICE
- ❑ AUTO ELECTRICAL
- ❑ TOWING
- ❑ AIR CONDITIONING
- ❑ CLUTCH & BRAKES
- ❑ TYRES
- ❑ WHEEL ALIGNMENT
- ❑ BATTERIES

CAR, TRUCK REPAIRS & Roadworthys

PH: 5267 3001

Mob: 0417 137 457

17 Alsop Drive



Have you seen the roses at the Railway Station - they are looking an absolute treat. Photos courtesy of Louise Hall member of the Stationeers Program."

Water Supply Specialists

WATER SOLUTIONS

74 Dennis Street, Colac
5231 1861

ALL THINGS WATER:

- PUMPS • PIPES
- FITTINGS • TANKS
- POOL CHEMICALS
- IRRIGATION
- WATER PURIFICATION
- SOLAR • REPAIR

Facebook icon, Instagram icon, QR code



SIMCO PLUMBING SERVICE

Domestic - Commercial - Rural

0400 643 976

- All general Plumbing and Gasfitting • Water tanks and Pumps
- Renovations and Extensions • Hot water and Heat pump
- Split system and Wood heaters • Roof and Gutter
- Septic and Treatment plants • Excavation, Bobcat and Tipper
- Driveways and Earthworks
- Blocked drains and CCTV Inspection

Simon McGillivray
Lic: 109610 Free Quotes, Fast & Friendly Service



HESSE RURAL HEALTH

Volunteers Required

Volunteers are one of Hesse's greatest assets, playing a vital role to enhance the quality of Hesse services & client experiences.

- Bus Driver
- Outings Assistant
- Resident Visitor
- Events & Activities Assistant
- Group Wheelchair Walkers
- Appointment Escort
- Social Support Activities
- Gardening - Winchelsea
- Hospital Auxiliary Member
- Consumer Advisory Committee
- Marketing & Fundraising Committee

For more information please contact Hesse on (03) 5267 1200 or via email reception@hesse.vic.gov.au

Funeral Planning

Working out what is best for you

Prepaid Funerals, Funeral Bonds, Pay-by instalments... There are many options and it's important to make the right choice

Alyson Burchell will be available by appointment to answer any questions about funerals and planning ahead

For more information or to make an appointment contact Sue on 5221 4788
Tuckers Community Office,
Surf Coast Taxation Services, 22 Willis Street, Winchelsea

**First Tuesday of the Month,
By appointment 10.00am - 12.00pm**

Tuckers
Funeral & Bereavement Service
...for a life worth celebrating

Caring for families since 1883

5221 4788 www.tuckers.com.au



We'd love to see you!

WINCHELSEA PLAYGROUP

Each Thursday during school terms.
Come along between 10AM - 12PM.
Check out our Facebook Page for more information about the happenings of each session.
Playgroup Leader - Danni Menzies
Email: winchelseaplaygroup@gmail.com
St. Thomas's Hall,
27-29 Barwon Terrace,
Winchelsea VIC 3241

\$5 PER FAMILY
INCLUDES MORNING TEA & HOT DRINKS FOR CAREGIVERS

Scan to be part of our Facebook




Winchelsea Community Foodbank

Fridays, 12 - 2PM
30-32 Hesse Street Winchelsea



Food relief for our community.

For more info, contact Tess
healthpromotion@hesse.vic.gov.au
0417 848 292



R.A.K. DAVIS & SONS

CARTAGE CONTRACTORS

WINCHELSEA

SUPPLIER OF ALL QUARRY MATERIALS, TRUCK HIRE
CARTAGE OF GRAIN, LIME, GYPSUM & SUPER
LANDSCAPE & GARDEN SUPPLIES
56 WILLIS ST, WINCHELSEA
Ph – 5267 2094
Ryan – 0438 672 281
email: rakdavissons@gmail.com

Winchelsea Star

Since 1977




SIMPLE STORAGE SOLUTIONS

- Personal & Business Storage
- Boat, Caravan & Vehicle Storage
- High Security Premises
- Individually Alarmed Units
- Electric Gate Access
- 7 Day Access & CCTV

YOUR STORAGE PROBLEMS SOLVED

5267 3116
6 ALSOP DRIVE, WINCHELSEA 3241





Moriac Veterinary Clinic
0447 781 089
 PHONE 24 HOURS
 784 Hendy Main Road Moriac
 info@moriacvet.com
 www.moriacvetclinic.com.au
 HOURS // Monday - Friday: 8am - 5pm

Commercial | Industrial | Domestic

HAMILTONS
 Truck & Bobcat Hire
 Give Aaron a Call
0438 438 623



CHARLES STEWART
 rmanetwork. Accredited Member

Charles Stewart & Company are leading livestock and real estate service providers covering Victoria's south west

	LIVESTOCK
Jamie McConachy	0418 522879
Peter McConachy	0408 522878
Matt Nelson	0428 315400
Gerard Bohan	0400 005541
Lachie Barclay	0438 346291
John Thornton	0408 526367
Dougal McIntyre	0439 575612
Ross Spitty	0419 539717
	REAL ESTATE
Michael Stewart	0418 520467
Daryl Osborne	0419 388341
Anthony McDonald	0418 593597
Gerard Bohan	0400 005541
Stephen Lugg	0417 556098
Josh Lamanna	0417 586032

Office
 56 Bromfield Street, Colac
 www.charlesstewart.com.au




HESSE RURAL HEALTH




Acute Care*
 Urgent Care*
 Residential Aged Care*
 Community Nursing
 Dietetics
 Physiotherapy
 Occupational Therapy

Diabetes Education
 Social Support Groups
 Counselling
 Home Care
 Health Promotion
 * services from Winchelsea only

www.hesseruralhealth.com.au
 P: (03) 5267 1200 E: reception@hesse.vic.gov.au

eldersrealestate.com.au





You're in Safe Hands With Peter Lindeman
Delivering Exceptional Results for Over 20 Years

If you're thinking of selling a Rural or Lifestyle acreage property on the Bellarine, the Greater Geelong region or beyond then think Peter Lindeman. Peter spent 20 years managing farms before jumping the fence to sell them; and over the last 23 years he's helped over 350 vendors achieve extraordinary results, more often than not surpassing their expectations. Why not let Peter show you how he can help you achieve an outstanding result for your property.

Peter Lindeman - 0418 525 609
RURAL AND LIFESTYLE SALES MANAGER - ELDERS GEELONG

E: peter.lindeman@elders.com.au

HF RICHARDSON

PROPERTY

Servicing all your real estate needs
 Ken McDonald **0418 524 150**

Residential | Rural Lifestyle | Agricultural Farms




Winchelsea Cricket Club Inc Cricket News



WCC Round 3 Results



D-Grade Winchelsea 243 def Queenscliffe 133

T Hardy 85	P Gray 4/7
A Gray 82	A Gray 2/26
R Edwards 26	S Collins 1/26
	N Whittaker 1/29

Brought to you by

HF
RICHARDSON
PROPERTY

WCC Round 4 Results



A-Grade Winchelsea 5/170 def St Leonards 9/166

S Murdoch 48 not out	M Buhrmann 2/24
M Buhrmann 38	S Murdoch 2/35
B Luppino 21	R Ferguson 2/39
B Caldicott 19 not out	C Hose 1/21
T Furbush 17	D Hampshire 1/27

Brought to you by

HF
RICHARDSON
PROPERTY

ROUND FIVE

A-Grade

VS

9th November - Day 2

1PM

Collendina Recreation Reserve

ROUND FIVE

D-Grade

VS

9th November

1PM

Grenville Oval





Located at 36 Main Street, Winchelsea 3241

For any enquires or bookings please contact the clinic on 5292 8028.
Or visit our website: www.winchmc.com.au

Opening Hours:

Monday - Friday 8:00am - 5.00pm
(Monday Evening Clinics available and selected Saturdays)



Our clinic accepts online bookings via the app called HotDoc.
Download the app on the App Store or Google Play or head to our website.

Free financial counselling with the Rural Financial Counselling Service

1300 771 741



13 11 14



Winchelsea and District

Ebony knows banking

If you need help with yours, you need to meet Ebony.

Ebony shares her knowledge of banking so you can achieve what you want from life.

And, she can meet you when and where it suits you; at the branch, over the phone, or via video call.

If you need help with your banking, call Ebony Berg, Loan Specialist on 5267 3189 or search Bendigo Bank Winchelsea.

bendigobank.com.au



Bendigo and Adelaide Bank Limited ABN 11 068 049 178, AFSL/Australian Credit Licence 237879. A1415950 OUT_33710515

Wightons Lawyers

Dispute Resolution & Litigation
Debt Collection
Property Law
Wills & Estates
Powers of Attorney
Business Law
Family Law

By appointment only

22 Willis Street, Winchelsea
ph. 5221 8777

www.wightons.com.au



Casuarina Counselling Therapy *Time For You*

Counselling to help find clarity, understanding and new ways forward for relief from distress of all kinds, including anxiety, depression, addiction, relationship issues.

Call 0493 988 150 to book appointment
Available at The Exchange,
32-34 Main Rd, Winchelsea

Scott McDonald
0423 413 829



S.J.R AUTOMOTIVE

ABN 948 493 848 38
13 ALGOP DRIVE, WINCHELSEA VIC 3241



WINCHELSEA BOWLS CLUB



Julie Johnson

The past couple of weeks with many players unavailable have certainly brought us back a little in terms of Pennant successes. However, most games were pretty tight so that is a good thing even if not the most welcome outcome. In State events we have done very well and held an extremely successful Memorial Tournament so all involved have been very busy both on and off the green.

PENNANT RESULTS

Midweek Rd 3

Winchelsea 1 def Cobden away 1/3 rinks, 71/65 shots.

Winchelsea 3 were def by Camperdown Golf at home, 42/72 shots.

Rd 4 Winchelsea 1 were def by Colac Central away 1/3 rinks, 65/72 shots.

Winchelsea 3 def Colac away 1/3 rinks, 61/44 shots.

Saturday Rd 3

Winchelsea 1 were def by Apollo Bay away 1/4 rinks, 76/92 shots.

Winchelsea 2 were def by Cressy away 2/4 rinks, 95/105 shots.

Winchelsea 4 Bye

Rd 4

Winchelsea 1 were def by Colac at home 2/4 rinks 88/94 shots.

Winchelsea 2 were def by Cobden at home 2/4 rinks 90/92 shots.

Winchelsea 4 Forfeit



Mark McConachy, Mike Zentgraf, Col Williams, Marie Drayton, Pam Mawson, Peter McConachy.

Winchelsea Bowls Club welcomes all visitors. Our Club has a beautiful garden setting in the heart of the town. For the complete newcomer to lawn bowls, looking for a sporting activity that promises much fun and enjoyment with a competitive element, then the friendly, welcoming atmosphere of our Bowling Club is the place to be.

STATE PAIRS LADIES AND MEN'S CHAMPIONSHIP

This event was held between Colac City and Colac Lake greens on Sunday the 20th and Sunday the 27th of October. In some wonderful matches two Winchelsea Pairs Erin Baulch and Pip Ward and David Partridge and Jason Armstrong were worthy winners. Congratulations to both pairs who will now have to play Western Region and Far Western Region for a spot in Country Week.

JENNY MCCONACHY MEMORIAL MIXED 4'S TOURNAMENT

This extremely successful event with representatives from over 10 clubs was held on Sunday 27th October which would have been Jenny's 72nd birthday. With 4 games of 8 ends great weather and a wonderful lunch everyone appeared to really enjoy their time on the green. When it came to the presentations 2 teams really could not be separated so 1st and 2nd prize monies were combined and shared between Colac and Winchelsea. Grateful thanks to all who attended with many travelling long distances to be involved. Congratulations to the winners, Carmel and Tom Watson who combined with Coral and Ken Hanson and Marie Drayton, Mike Zentgraf, Col Williams and Pam Mawson. Thanks to the McConachy Family and all the Winchelsea Club members who helped to make this day so special.

AROUND THE GREEN

There has been very little to report other than practice is well attended, the Roving Kitty event is moving along and the Club Championship 4's will soon commence.

Currently we have 2 mixed pair teams competing in Corangamite Playing Area State Title.

The Final of the Mixed Pairs will be between Erin Baulch & Jason Armstrong Vs Pip Ward & Stewart Williams. They both had great wins in their semi finals and will play on Wednesday at Colac at 6 p.m.

Some fantastic wins from our players against great opposition. Onward and upward for future matches to all players and may the bowls be with you!!



David Partridge, Jason Armstrong, Erin Baulch, Pip Ward. CPA Ladies and Mens State Pairs.



Mark McConachy, Coral and Ken Hanson Colac City, Tom and Carmel Watson Colac Lake, Peter McConachy.



M&B WOOD PLUMBING

Call Matt - 0418 319 357
mbwoodplumbing.au

Servicing Winchelsea & surrounds

- General maintenance & blocked drains
- Gas fitting & hot water service upgrades
- New homes & renovations

NO MATTER WHAT YOUR PROBLEM, DODDS ELECTRIX CAN DEFUSE THE SITUATION.

RURAL, INDUSTRIAL, COMMERCIAL DOMESTIC
 PHONE 0438 887 360
 EMAIL: DODDSY@FASTMAIL.FM
 PO BOX 36 BIRREGURRA, VICTORIA 324
 REC: 17520 ABN: 64 581 250 880

M&T BUILDING & CONSTRUCTION

NEW HOMES | EXTENSIONS | RENOVATIONS Ph: 0409 433 687  REGISTERED Building Practitioner

AlfordBuilt

New Homes, Renovations, Extensions, Bathrooms, Decks & Pergolas

0408 583 362

stephen@alfordbuilt.com.au



REGISTERED Building Practitioner

NATURAL GAS CONNECTIONS

M. & L DRAYTON PLUMBING SERVICES

YOUR LOCAL LICENSED

- PLUMBERS (24356)
- GAS FITTERS
- GAS CONVERTERS
- CARBON MONOXIDE TESTING

MARK 0428 520 142

Lupton BUILDERS

SPECIALISING IN QUALITY



REGISTERED Building Practitioner

- NEW HOMES
- ALTERATIONS
- CARPORTS
- BATHROOMS
- EXTENSIONS
- DECKS
- VERANDAHS
- WINDOW REPLACEMENTS
- RENOVATIONS
- PERGOLAS
- RE-GLADS

LEIGH LUPTON
0438 840 104

CHRIS LUPTON
0407 681 514

LEIGHLUPTON17@GMAIL.COM

Est. 1977

GREAT Bundle Deal on Bosch Hot Water...

FROM ELGAS
 Buy any Bosch Bluetooth continuous flow hot water model - 16Litre, 20Litre or 26Litre and Receive \$100* in Elgas bonus LPG gas credits



*For more details: www.elgas.com.au/appliances/boschvplflow-16-20-26-lpg-bundle-sale

AND... for new customers, an additional \$80 WORTH OF LPG GAS CREDITS** when you open a new LPG Gas account with Elgas



Ask about the Elgas Easy Payment Plan - 12 months interest free*** on selected LPG appliances
 ***Further details can be viewed at: www.elgas.com.au/epp

Automatic tanker gas bottle refill OR gas bottle exchange refill is available for home or business...
 Call today or visit our website for our many customer benefits and latest offers

131 161
www.elgas.com.au

ELGAS



Winchelsea Football Netball Club Inc

Blues News



Janet Fletcher

WINCHELSEA FOOTBALL & NETBALL CLUB INC.

NOTICE OF 2024 ANNUAL GENERAL MEETING

Winchelsea Football & Netball Club Inc: A0042789Y
 70 Hopkins Street, Winchelsea 3241
 Post Office Box 56 Winchelsea 3241
www.winchelseafc.vcfl.com.au

Affiliated with the Geelong & District Football & Netball League.

**The ANNUAL GENERAL MEETING will be held on Monday 25th November 2024
 at 7.30pm in the Members Room. Eastern Reserve**

All positions have been declared vacant: President, Vice President (2)
 Secretary, Treasurer and General Committee. New nominations will be presented.

If you wish to nominate please fill out a nomination form (available from the Foxes Den Cafe, /
 Janet Fletcher 0400 783 408) and send to The Secretary, P. O. Box 56, Winchelsea Post Office 3241,
 or e-mail winchelseafc@hotmail.com

Nomination forms must be received fourteen (14) days prior to the A.G.M. ie: 11th November 2024.

Nomination forms must have the signature of the nominee, a nominator and a seconder.
 Nominations will be displayed on the Club's Website / Facebook page 7 days prior to the A.G.M.

Please consider becoming a volunteer for the Winchelsea Blues and help guide the Club
 throughout what will be an exciting 2025 Football & Netball season.

GO BLUES!!

WINCHELSEA FOOTBALL & NETBALL CLUB INC.

COMMITTEE NOMINATION FORMS:

I _____ hereby nominate for the incoming Committee of Management
 for the W.F.N.C. INC. for the season 2024/25 (please tick the position nominating for).

Signature: _____

PRESIDENT _____ VICE PRESIDENT _____ VICE PRESIDENT _____

TREASURER _____ SECRETARY _____ COMMITTEE MEMBER _____

NOMINATED BY _____ Signature _____

SECONDED BY _____ Signature _____



- Domestic and Commercial hire equipment • Industrial welding gas
- Digging and Earthmoving equipment • New trailers and trailer repairs
- Firewood • Stockists of Royal Oil Lubricants products
- LPG for domestic and commercial requirements

Give Chris and the Team a call on **5232 1177** or email info@colachire.com.au
www.colachire.com.au **COLAC HIRE**
 101 Wallace St Colac 3250

Winchelsea Star

ISSN 2202-6851



9 772202 685002

Since 1977

Winchelsea Taxis is now Surfcoast Taxis

Our fleet of vehicles are growing to all late models and we are covering an extended area including Winchelsea, Colac, Bannockburn, Inverleigh, Great Ocean Road and Geelong.
 We have a fleet of 10 seater Maxi Vans, all with capacity to carry wheelchairs.

Surfcoast Taxis Pty Ltd
All Bookings: 0408 325 992
Fax: 5267 2699
Email: bannotaxis@gmail.com
 (Admin or Stan 0429 672 888)
 66A Batson Street
 Winchelsea 3241



Book your next ride with **smartHAIL**



Book Track Pay Rate

Download on the App Store GET IT ON Google Play

Accounts NDIS provider. TAC, DVA etc
 NDIS provider number 4050001044
 NDIS provider number 4050001048

DEFIBRILLATORS IN WINCHELSEA

Accessible to the public 24 hours a day

The Winchelsea Lions Club has compiled a list of public access defibrillators in Winchelsea. Four more have been installed at Winchelsea Primary School, Winchelsea Bowls Club Hesse St, the netball courts Eastern Reserve Hopkins St and at the Globe Theatre near the side entrance. If anyone knows any others that have 24 hour public access, please let Linda Carter know on 0439 817 263.



Bendigo Bank
11 Main Street



Ambulance Victoria
33 Willis Street



Uniting Church
33 Hesse Street



Senior Citizens
36 Harding Street



Men's Shed
51 Hesse Street



Winchelsea Golf Club
13 Anderson Street



Hesse Rural Health
8 Gosney Street



Wurdale Memorial Hall
220 Wurdale Road

