





sushi & sashimi



Escapade

日本料理

#### LEGEND & NOTES :

-  • Spicy
-  • Longer preparation
-  • Beware of small bones
-  • Vegetarian
- No MSG added
- Sashimi is not recommended for customers who are sensitive to raw food

# CONTENT

## 目次

### sushi & sashimi

02-04	<b>sushi nigiri</b> 握り寿司
05	<b>inari sushi</b> 稲荷寿司
06	<b>gunkan sushi</b> 軍艦巻と押し寿司
07	<b>makimono</b> 巻き寿司
08-15	<b>maki - 4pcs / 6pcs</b> 寿司ロール
16-17	<b>sushi special</b> スペシャル寿司
18	<b>sushi moriawase</b> 寿司盛り合わせ
19	<b>temaki</b> 手巻
20-23	<b>zensai</b> ( <i>appetizer</i> ) 前菜
24-27	<b>sashimi</b> 刺身
28	<b>atatakai nomimono</b> ( <i>hot drinks</i> ) 温かい飲み物
29	<b>aisudorinku</b> ( <i>iced drinks</i> ) 冷たい飲み物
30-31	<b>dezato</b> ( <i>dessert</i> ) デザート

**From The Cold,  
Clear Waters of Norway...**

Prices are inclusive of 6% GST

# NIGIRI

(2pcs per serving)

a piece of fish or seafood (raw or cooked) placed upon a pressed vinegared rice which is very traditional



**BN 001**  
Unagi (eel)  
**RM12.7**



**BN 002**  
Sake (salmon)  
**RM12.1**



**BN 003**  
Maguro (seasonal - Airflown yellow fin tuna)  
**RM10.2**



**BN 004**  
Ika (squid)  
**RM8.6**



**BN 005**  
Aburi Hotate (scallop)  
**RM16.85**



**BN 006**  
Shimesaba (mackerel)  
**RM8.6**



**BN 007**  
Ebi (shrimp)  
**RM10.2**



**BN 008**  
Amaebi Mentaiko Sushi (sweet prawn)  
**RM15.9**



**BN 009**  
Tako (octopus)  
**RM10.2**



**BN 010**  
Hokkigai (surf clam)  
**RM12.7**



**BN 011**  
Hamachi (yellow tail)  
**RM23.85**

穴子 is the Japanese word for salt-water eels 穴子



BN 012  
Anago (sea eel)  
RM15.25



BN 013  
Unagi Fire Cheese  
RM15.25



BN 014  
Triple "S" Sushi  
RM7.0



BN 015  
Tamago  
RM7.0



BN 016  
Tama Unagi Sushi  
RM11.15



BN 017  
Tama Masago Sushi  
RM10.2



BN 018  
Salmon Fire Teriyaki  
RM12.7



BN 019  
Salmon Fire Cheese  
RM14.3



BN 020  
Aburi Salmon Belly  
RM15.25

Prices are inclusive of 6% GST



**NEW**

BN 021

Scallop Carpaccio Nigiri  
RM18.45



**NEW**

BN 022

Salmon Carpaccio Nigiri  
RM14.3



**NEW**

BN 023

Aburi Salmon w/ Black Pepper  
RM14.3

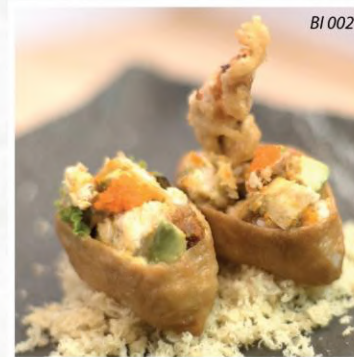
# INARI

(2pcs per serving)

稲  
荷



BI 001



BI 002

- |        |                                |                |
|--------|--------------------------------|----------------|
| BI 001 | <b>Inari Salmon Skin Salad</b> | <b>RM10.2</b>  |
| BI 002 | <b>Inari Softshell Crab</b>    | <b>RM15.25</b> |
| BI 003 | <b>Inari Ikura</b>             | <b>RM21.6</b>  |
| BI 004 | <b>Inari Plain</b>             | <b>RM 6.35</b> |
| BI 005 | <b>Inari Idako</b>             | <b>RM12.1</b>  |
| BI 006 | <b>Inari Salmon</b>            | <b>RM12.9</b>  |
| BI 007 | <b>Inari Wakame Ebiko</b>      | <b>RM10.2</b>  |
| BI 008 | <b>Inari Tuna Salad</b>        | <b>RM10.2</b>  |



BI 005

*Inari sushi is made of sushi rice wrapped inside the seasoned deep-fried tofu pockets called "Inari Age"*

稲  
荷  
マ  
サ  
ゴ

- |        |                     |               |
|--------|---------------------|---------------|
| BI 009 | <b>Inari Masago</b> | <b>RM10.2</b> |
|--------|---------------------|---------------|

*photos are for illustration purpose only*

*Prices are Inclusive of 6% GST*

# GUNKAN (2pcs per serving)

軍艦すし

Rice & nori seaweed accompanied by salmon, sea urchin or flying fish roe. The roe are the delicious & surprisingly colorful eggs.



BN 024  
Spicy Hotate Sushi  
RM17.5

- |                   |                                 |               |
|-------------------|---------------------------------|---------------|
| BN 025            | <b>Masago</b>                   | <b>RM8.6</b>  |
| BN 026            | <b>Tobiko</b>                   | <b>RM12.1</b> |
| BN 027            | <b>Black &amp; Red Tobiko</b>   | <b>RM12.7</b> |
| BN 028            | <b>Ikura (20g)</b>              | <b>RM21.6</b> |
| BN 029            | <b>Kani Salad Sushi</b>         | <b>RM7.0</b>  |
| BN 030            | <b>Salmon Salad Sushi</b>       | <b>RM10.2</b> |
| <b>NEW</b> BN 032 | <b>Salmon Furai Salad Sushi</b> | <b>RM10.2</b> |



BN 025



BN 026



BN 027



BN 028



BN 029



BN 030

BN 031  
Tuna Salad Sushi  
RM7.0



**NEW**  
BN 033  
**Idako Gunkan Sushi**  
RM12.1



Prices are inclusive of 6% GST

# MAKIMONO

(6pcs per serving)

## 卷物



<b>NEW</b>		<b>BM 001</b>	<b>Wakame Maki</b> <i>(seaweed)</i>	<b>RM7.0</b>
		<b>BM 002</b>	<b>San Shoku Maki</b> <i>(crabstick, salmon, cucumber)</i>	<b>RM10.35</b>
		<b>BM 003</b>	<b>Avocado Maki</b>	<b>RM10.35</b>
		<b>BM 004</b>	<b>Cheese Maki</b>	<b>RM10.35</b>
		<b>BM 005</b>	<b>Unagi Maki</b> <i>(eel)</i>	<b>RM12.9</b>
		<b>BM 006</b>	<b>Kani Maki</b> <i>(crabstick)</i>	<b>RM7.0</b>
		<b>BM 007</b>	<b>Oshinko Maki</b> <i>(pickled radish)</i>	<b>RM7.0</b>
		<b>BM 008</b>	<b>Salmon Maki</b>	<b>RM12.9</b>
		<b>BM 009</b>	<b>Kappa Maki</b> <i>(cucumber)</i>	<b>RM7.0</b>
		<b>BM 010</b>	<b>Tekka Maki</b> <i>(seasonal- Airflown yellow fin tuna)</i>	<b>RM12.9</b>
		<b>BM 011</b>	<b>Tamago Maki</b> <i>(egg)</i>	<b>RM7.0</b>

## おいしい寿司 OISHI SUSHI



BO 001

**Battera Smoked Salmon**  
バタースモークサーモン  
**RM19.1**



BO 002

- BO 002** **Layer Sushi** **RM18.7**
- BO 003** **Sandwich Sushi** **RM 15.5**
- BO 004** **Battera Salmon** **RM18.7**
- BO 005** **Unagi Sandwich** **RM21.95**



BO 003

Prices are inclusive of 6% GST



# MAKI sushi

∞  
4pcs serving

BM 012	<b>Beef Maki</b>	RM12.7
BM 013	<b>Nama Kani Maki</b>	RM12.7
BM 014	<b>Salmon Skin Maki</b>	RM 7.0
BM 015	<b>Baby Octopus Maki</b>	RM10.2
BM 016	<b>Futo Maki</b>	RM 7.0
BM 017	<b>Tori Katsu Maki</b>	RM10.2
BM 018	<b>Tuna Salad Maki</b>	RM10.35
BM 019	<b>Lamb Maki</b>	RM15.25



Prices are inclusive of 6% GST

BM 021	<b>Philadelphia Maki</b>	<b>RM12.9</b>
BM 022	<b>Sushi Tempura</b>	<b>RM 8.6</b>
BM 023	<b>Norwegian Maki</b>	<b>RM10.2</b>
BM 024	<b>Rainbow Maki</b>	<b>RM10.2</b>
🍣 BM 025	<b>Tongarashi Maki</b>	<b>RM10.2</b>
BM 026	<b>Una Hama Maki</b>	<b>RM15.25</b>
🍣 BM 027	<b>Ura Maki</b>	<b>RM15.5</b>
🍣 BM 028	<b>Hamachi Salad Maki</b>	<b>RM10.2</b>



BM 020  
**Alaska Maki**  
RM15.5

maki ∞ 4pcs serving

卷物



BM 021



BM 022



BM 023



BM 024



BM 025



BM 026



BM 027



BM 028

Prices are inclusive of 6% GST

BM 029  
Hoso Maki  
RM18.7



- BM 030 Pizza Roll RM15.5
- BM 031 Cucumber Roll RM15.25
- BM 032 Mini Konagi Avocado Maki RM15.25
- BM 033 Una Wakame Maki RM12.7
- BM 036 Mini Konagi Salmon Maki RM15.25

BM 030



BM 031



BM 032



BM 033



BM 034

Cucumber Salmon Roll  
RM15.25



BM 035

Ebi Salad Roll  
RM14.3



寿司口一儿

Prices are inclusive of 6% GST

# マキ

BM 037 Paradise Roll  
 BM 038 Ebi Furai Maki  
 BM 039 Manhattan Maki

RM18.7  
 RM15.5  
 RM10.2

BM 042 Ichiban Roll  
 BM 043 Ebi Tempura Maki  
 BM 044 Una Tongarashi Maki

RM15.25  
 RM15.5  
 RM12.7



BM 037



BM 040

**Rock & Roll**  
 RM15.25



BM 042



BM 038



BM 041

**Una Ikura Maki**  
 RM21.60



BM 043



BM 039



BM 044



BM 045  
**Shirao Roll**  
 RM10.2

Prices are inclusive of 6% GST



BM 046



BM 047



BM 048



BM 049



BM 050



BM 052  
**Maguro Cucumber Roll**  
*(seasonal - air flown yellow fin tuna)*  
**RM15.25**



BM 051

寿司口一儿

- |          |                             |         |
|----------|-----------------------------|---------|
| ☛ BM 046 | <b>Kawari Roll</b>          | RM15.25 |
| ☛ BM 047 | <b>Konagi Smoked Salmon</b> | RM15.25 |
| ☛ BM 048 | <b>Narita Mayo</b>          | RM12.7  |
| ☛ BM 049 | <b>Island Roll</b>          | RM15.25 |
| ☛ BM 050 | <b>Kyushu Roll</b>          | RM15.25 |
| BM 051   | <b>Mandarin Roll</b>        | RM15.25 |

Prices are inclusive of 6% GST



BM 053  
Tempura Ebiko Maki  
RM18.45



BM 058



BM 059



BM 060



BM 061



BM 062



BM 063



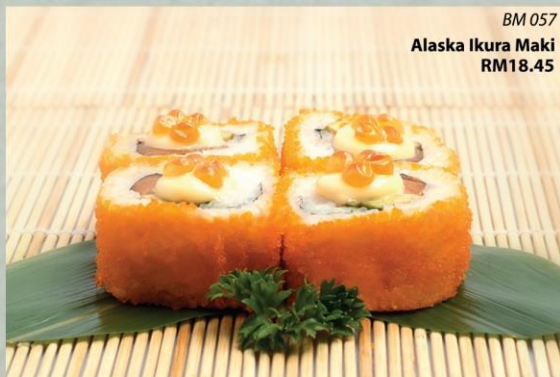
BM 054



BM 055



BM 056



BM 057  
Alaska Ikura Maki  
RM18.45

BM 054	<b>Hokkaido Maki</b>	<b>RM10.2</b>
BM 055	<b>Softshell Crab Ebiko Maki</b>	<b>RM12.7</b>
BM 056	<b>Salmon Skin Ebiko Maki</b>	<b>RM10.2</b>
BM 058	<b>Toshi Maki (w/unagi)</b>	<b>RM12.7</b>
BM 059	<b>Tuna Salad Ebiko Maki</b>	<b>RM10.2</b>
BM 060	<b>Unagi Maki Special</b>	<b>RM15.25</b>
BM 061	<b>Mini California Special</b>	<b>RM10.2</b>
BM 062	<b>Fuji Roll</b>	<b>RM12.7</b>
BM 063	<b>Sakura Roll</b>	<b>RM18.45</b>

#1

88 4pcs serving



BM 064  
百太子マンダリンロール  
**Mentaiko Mandarin Roll**  
RM15.9

ミニサーモンメイヨー  
BM 065 **Mini Salmon Mayo** RM21.6

ハナの煙サケ  
BM 066 **Hana Smoked Salmon** RM21.6

ミニサーモンメイヨー  
BM065a **Mini Salmon Mayo** (w/tobiko) RM18.45

ハナの煙サケ  
BM066a **Hana Smoked Salmon** (w/tobiko) RM18.45



88 6pcs Serving



BM 067

BM 071

BM 067 **Kamikaze Roll** RM12.1  
BM 068 **Hakata Roll** RM15.25  
BM 069 **Mini California Maki** RM12.7  
BM 070 **Sansai Maki** RM12.7  
BM 071 **Twins Roll** RM21.6

BM 072  
サンニマイマキ  
**San Nimai Maki**  
RM18.7



NEW

BM 073

ニューヨークロール

New York Roll

RM21.6

特別ロール



BM 074

スパイダーロール

Spider Roll

RM15.25

Prices are inclusive of 6% GST



BM 075

チキンロール

Chakin Roll

RM21.6



# SPECIAL SUSHI

特別な寿司



🕒 **NEW** ハウスキーマキ  
**BS 001 Houseki Maki**  
**RM15.5**

- NEW** 🕒 **BS 002 Oishi Roll (4pcs)** **RM12.7**  
大石ロール
- 👉 🕒 **BS 003 Caterpillar Roll (8pcs)** **RM41.35**  
キャタピラーロール
- 👉 🕒 **BS 004 Godzilla Roll (8pcs)** **RM41.35**  
ゴジラロール
- 🕒 **BS 005 Tropical Roll (8pcs)** **RM31.8**  
トロピカルロール
- 🕒 **BS 006 Phoenix Roll (8pcs)** **RM33.4**  
フェニックスロール

🍷 **8pcs Serving**



Prices are inclusive of 6% GST



**NEW**  
BS 014  
Kani Roll w/ Creamy Salmon  
(4pcs)  
カニロールクリームサーモン  
RM15.25



BS 007

## 特別な寿司

春巻き寿司

**Spring Roll Sushi**

BS 007 **Salmon** RM15.25

BS 008 **Smoked Salmon** RM15.25

BS 009 **Prawn** RM15.25

BS 010 **Lamb** RM15.25

BS 011 **Unagi** RM14.3

BS 012 **Chicken** RM12.7

BS 013 **Beef (tenderloin)** RM15.25



**NEW**  
BS 015 マグロワカメ寿司  
**Maguro Wakame Sushi**  
(seasonal - air flown yellow fin tuna)  
RM21.95



BS 016

**NEW**  
BS 016 **Hotate Spicy Salad (4pcs)**  
熱いスパイシーサラダ  
RM21.6

Prices are inclusive of 6% GST

# 寿司セット



**NEW** 🕒 サーモンモリアワース  
**BS 017** **Salmon Moriawase**  
**RM40.7**

**NEW** 🕒 **BS 018** **Nokke Sushi (6pcs)** **RM28.6**

**NEW** 🕒 **BS 019** **Aburi Moriawase (5pcs)** **RM21.6**  
 アブリーモリアワセ

**BS 020** **Sushi Set (14pcs)** **RM47.7**  
 寿司セット

**BS 021** **Hana Set (12pcs)** **RM25.45**  
 花セット



**NEW**  
**BS 019**



**BS 020**



**NEW**  
**BS 018**



**BS 021**

Prices are inclusive of 6% GST

# TEMAKI

手巻, "hand roll" is a large cone-shaped piece of nori on the outside and the ingredients spilling out the wide end. A typical temaki is about ten centimeters (4 in) long, and is eaten with fingers because it is too awkward to pick it up with chopsticks. For optimal taste and texture, temaki must be eaten quickly after being made because the nori cone soon absorbs moisture from the filling and loses its crispness, making it somewhat difficult to bite through.

## 手巻



TM 001  
Salmon Avocado Ebiko Temaki  
サーモンアボカドえびこ手巻



TM 004



TM 003



TM 002



TM 011



TM 010



TM 009



TM 008



TM 007



TM 006



TM 005



TM 018



TM 017



TM 016



TM 015



TM 014



TM 013



TM 012



TM 019

**NEW**

TM 020

TM 001	Salmon Avocado Ebiko Temaki	RM15.5
TM 002	Salmon Crispy Temaki	RM12.1
TM 003	Kani Salad Temaki	RM12.1
TM 004	Tuna Salad Temaki (w/ cucumber skin)	RM12.1
TM 005	Salmon Unagi Ikura Temaki	RM18.45
TM 006	Unagi Hamachi Avocado Temaki (w/ carrot skin)	RM15.25
TM 007	Philadelphia Temaki (w/ cucumber skin)	RM15.5
TM 008	Tuna Spicy Temaki (air flown yellow fin tuna)	RM18.7
TM 009	Ebi Ten Temaki	RM12.1

TM 010	Tuna Avocado Temaki (air flown yellow fin tuna)	RM12.1
TM 011	Salmon Seaweed Ebiko Temaki	RM12.1
TM 012	California Temaki	RM12.1
TM 013	Unagi Temaki	RM12.7
TM 014	Salmon Skin Salad Temaki	RM12.1
TM 015	Vegetarian Temaki	RM12.1
TM 016	Softshell Crab Temaki	RM12.1
TM 017	California Special Temaki	RM12.1
TM 018	Hamachi Salad Temaki	RM12.1
NEW TM 019	Tori Katsu Temaki	RM12.1
NEW TM 020	Salmon Furai Temaki	RM12.1

Prices are inclusive of 6% GST



BAP 01  
**Salmon Tataki** (100g)  
**RM30.2**

BAP 02 **Hamachi Ponzu** (100g) **RM75.70**  
*(yellow tail)*

BAP 03 **Maguro Ponzu** (100g) **RM31.15**  
*(seasonal - air flown yellow fin tuna)*

BAP 04 **Beef Tataki** (80g) **RM28.0**  
*(Australian tenderloin)*



**NEW**  
 BAP 05  
**Salmon Yuke** (60g)  
**RM21.6**

BAP 06  
**Maguro Yuke** (60g)  
*(seasonal - air flown yellow fin tuna)*  
**RM21.6**



Prices are inclusive of 6% GST



BAP 07  
**Sake with Miso Yuzu Salad (80g)**  
RM30.2



BAP 08  
**Sake Miso Zuke (60g)**  
RM22.25



BAP 09  
**Ebi Avocado Salad**  
RM21.6



BAP 10  
**NEW** 🕒 **Mandarin Ebi Avocado Salad**  
RM18.45

Prices are inclusive of 6% GST



- NEW BAP 11 Salmon Avocado Carpaccio** RM28.6  
サーモンアボカドのカルパッチョ
- NEW BAP 12 Scallop Carpaccio (40g)** RM21.6  
ホタテのカルパッチョ
- NEW BAP 13 Salmon Carpaccio (40g)** RM18.45  
サーモンカルパッチョ



**NEW**  
BAP 14  
タコカルパッチョ  
Tako Ponzu (30g)  
RM18.45



**NEW**  
寿司ケーキ  
Sushi Cake

- BAP 15 **RM152.65** (800g)
- BAP 16 **RM101.75** (550g - small)

Prices are inclusive of 6% GST

**\* Note: Please make one (1) day advance booking**



BAP 23



BAP 24

- BAP 20 **Maguro Tatakushi** (seasonal - 120g) **RM35.0**  
*(air flown yellow fin tuna)*  
マグロタタキ
- BAP 21 **Maguro Uzukushi** (seasonal - 130g) **RM37.5**  
*(air flown yellow fin tuna)*  
マグロウズクリ
- BAP 22 **Hamachi Uzukushi** (100g) **RM75.70**  
ハマチウズクリ
- BAP 23 **Salmon Uzukushi** (100g) **RM37.5**  
サーモンウズクリ
- BAP 24 **Aburi Salmon Salad** **RM30.2**  
アブリーサーモンサラダ

- NEW** BAP 17 **Salmon Tartare** (60g) **RM21.6**  
サーモンタルタル
- BAP 18 **Maguro Tartare** (60g) **RM21.6**  
*(Seasonal - air flown yellow fin tuna)*  
マグロタルタル
- BAP 19 **Hamachi Tartare** (60g) **RM43.90**  
ハマチタルタル

Tartare is a diced raw fish with seasonings. This dish is commonly served as appetizer.



**NEW**  
BAP 17

Prices are inclusive of 6% GST



# CREATE *your own* Sashimi COMBO \*Minimum of 3 combinations



SA 001  
**Salmon** (70g)  
RM19.1



SA 004  
**Tako** (70g)  
RM18.45



SA 007  
**Ika** (35g)  
RM12.7



SA 002  
**Maguro** (70g)  
*(seasonal - air flown yellow fin tuna)*  
RM18.45



SA 005  
**Hokkaido Hotate** (70g)  
RM31.8



SA 008  
**Saba** (70g)  
RM21.95



SA 010  
**Ama-Ebi** (40g)  
RM18.45



SA 003  
**Hamachi** (50g)  
RM35.0



SA 006  
**Hokkigai** (2pcs)  
RM12.7



SA 009  
**Ikura** (plain - 20g)  
RM21.6



SA 011  
**Hon Maguro**  
(60g)



SA 012  
**Uni** (20g)



SA 013  
**Fresh Oyster**  
(per pc)

**SEASONAL PRICE**

Prices are inclusive of 6% GST



# SASHIMI

An excellent source of protein, Omega3, fatty acids & other nutrients including phosphorous, magnesium & vitamins B6 and B12.

SA 014  
**鮭刺身**  
**Salmon Sashimi**  
 (200g)  
**RM53.4**

**NEW**  
 SA 015  
 ボタンエビ  
**Ikura Sashimi**  
 (40g)  
**RM40.70**



**Atlantic Salmon**

grows exceptionally well in Norway's Atlantic waters, but it is also produced in Chile, UK, North America, The Faroe Island, Ireland and Australia. Atlantic salmon can be served a variety of ways - poached, smoked and sushi.

- |        |   |                 |
|--------|---|-----------------|
| SA 016 | <b>Hamachi Sashimi</b> (yellow tail - 160g)<br>はちまち刺身                       | <b>RM110.65</b> |
| SA 017 | <b>Saba</b> (mackerel - 160g)<br>サバ   | <b>RM41.25</b>  |
| SA 018 | <b>Hokkaido Hotate Sashimi</b> (scallop - 120g)<br>北海道帆立刺身                  | <b>RM63.6</b>   |
| SA 019 | <b>Tako Sashimi</b> (octopus - 120g)<br>タコ刺身                                | <b>RM38.15</b>  |
| SA 020 | <b>Maguro Sashimi</b> (seasonal - 60g)<br>マグロ刺身 - air flown yellow fin tuna | <b>RM44.5</b>   |
| SA 021 | <b>Hokkigai Sashimi</b> (surf clam - 120g)<br>ホクギガイ刺身                       | <b>RM54.05</b>  |
| SA 022 | <b>Ika Sashimi</b> (squid - 70-80g)<br>イカ刺身                                 | <b>RM31.8</b>   |
| SA 023 | <b>Ama-ebi</b> (sweet prawn - 80g)<br>アマエビ                                  | <b>RM31.15</b>  |

Prices are inclusive of 6% GST



Sea Urchin

Sea Urchin, also known as "Uni" is a delicacy made from the gonads of the sea urchin. It is low in calories which is beneficial for the body to maintain weight & keep the body healthy.

ユ  
ニ  
ニ



**NEW**  
BN 034 ユニニギリ  
Uni Nigiri (sea urchin - 20g)

**NEW** 子供の-ネモ  
SA 024 **Uni Sashimi** (sea urchin - 20g)

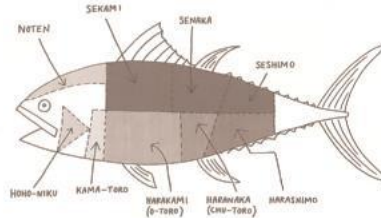
**SEASONAL PRICE**

Remark:  
Available in Gadong, Regent Square (K2) & Miri Branch only  
Prices are inclusive of 6% GST



Tsukiji Market

## ブルーフィンマグロ



アカマイ  
SA 025 Akami



チュートリアル  
SA 026 Chutoro



オットー  
SA 027 Otoro

# HON MAGURO (seasonal)

Bluefin Tuna are the largest tuna and is a highly sought-after delicacy for sushi & sashimi. About 80% of the global bluefin catch is consumed in Japan. Perhaps the most common health benefit that is attributed to tuna fish is its significant impact on heart health reducing the cholesterol in the arteries and blood vessels.

**SEASONAL PRICE**

**NEW**  
ブルーフィンマグロ 刺身  
Blue Fin Tuna "SASHIMI"

SA 025 Akami (60g)  
SA 026 Chutoro (60g)  
SA 027 Otoro (60g)

**NEW**  
ブルーフィンマグロニギリ  
Blue Fin Tuna "NIGIRI"

BN 035 Otoro (30g)  
BN 036 Chutoro (30g)  
BN 037 Akami (30g)



Remark:  
Available in Gadong, Regent  
Square (K2) & Miri Branch only

Prices are inclusive of 6% GST

# ATATAKAI NOMIMONO

## (hot drinks)

### 温かい飲み物

緑茶

Green tea, is a type of tea that is made from *camellia sinensis* leaves that have not undergone the same withering & oxidation process. It is loaded with antioxidants and nutrients that have powerful effects on the body including improved brain function, fat loss & lower risk of cancer.

#### GREEN TEA

DHT 01	<b>Genmai</b> (Sachet) 玄米緑茶	RM3.2
DHT 02	<b>Sencha</b> 煎茶	RM3.2

#### COFFEE

DHD 01	<b>Espresso</b>	RM8.6
DHD 02	<b>Freshly Brewed Coffee</b>	RM8.9
DHD 03	<b>Café Mocha</b>	RM12.7
DHD 04	<b>Café Latte</b>	RM12.7

#### HOT DRINKS

DHD 05	<b>Hot Milo</b>	RM7.95
DHD 06	<b>Teh Tarik</b>	RM7.95
DHD 07	<b>Hot Chocolate</b>	RM12.7
DHD 08	<b>Hot Lemon (fresh)</b>	RM9.55
DHD 09	<b>Hot Lime (fresh)</b>	RM9.55
DHD 10	<b>Hot Lemon Tea</b>	RM8.6

Genmai  
(Brown Rice)  
玄米緑茶



Sencha  
煎茶



Green Tea



## JAPANESE SLINGS

DJS 01	Momo Remo	RM12.7
DJS 02	Japanese Lime Juice	RM12.7
DJS 03	Simple Red	RM12.7
DJS 04	Simple Blue	RM12.7
DJS 05	Japanese Makkuteru	RM12.7
DJS 06	Kiwi Milkado	RM12.7
DJS 07	Watermelon Cooler	RM12.7
NEW DJS 08	Sunrise	RM14.3
NEW DJS 09	Color Fusion	RM14.3
NEW DJS 10	Baby Blue Apple	RM14.3
NEW DJS 11	Summer Passion	RM14.3
NEW DJS 12	Lychee Lemonade	RM14.3
NEW DJS 13	Passion Honey Ginger	RM14.3
NEW DJS 14	Mint Honey Ginger	RM14.3

## QUENCHERS IN CAN

DQC 01	Coke	RM6.35
DQC 02	Coke Light	RM6.35
DQC 03	Coke Float	RM9.55
DQC 04	Pepsi	RM6.35
DQC 05	Pepsi Twist	RM6.35
DQC 06	7-up	RM6.35
DQC 07	100 Plus	RM6.35
DQC 08	Mango Juice	RM7.95
DQC 09	Soya Bean	RM6.35
DQC 10	Mineral Water (Sehat 600ml)	RM3.2

NEW

DFL 02

Affogato Special - Matcha



## FLAVOURED LATTE

DFL 01	Matcha Latte	RM14.3
NEW DFL 02	Affogato Special	RM15.25
DFL 03	Yam	RM12.7
DFL 04	Vanilla	RM12.7
DFL 05	Chocolate	RM12.7

## FLAVOURED ICED TEA

DFT 01	Plum Tea	RM8.6
DFT 02	Peach Tea	RM8.6
DFT 03	Peach Lemon Tea	RM8.6
DFT 04	Lemon Tea	RM8.6
DFT 05	Mint Lemon Tea	RM8.6
DFT 06	Passion Lemon Tea	RM8.6

## SMOOTHIES

DSM 01	Peach & Mango Smoothie	RM14.3
DSM 02	Strawberry & Banana Smoothie	RM14.3
DSM 03	Pineapple & Banana Smoothie	RM14.3
DSM 04	Mango Smoothie	RM12.7



## MOCKTAILS

DM 001	Strawberry Coconut Colada	RM14.3
DM 002	Rocky Road	RM14.3
DM 003	Peach Melba	RM12.7
DM 004	Milo Godzilla	RM12.7
DM 005	Coconut & Mango Twist	RM14.3



## ICED DRINKS

DID 01	Iced Mochaccino	RM12.7
DID 02	Iced Chocolate	RM12.7
DID 03	Iced Capuccino	RM12.7
DID 04	Iced Latte	RM12.1
DID 05	Iced Coffee	RM8.6
DID 06	Iced Milo	RM8.6
DID 07	Iced Tea Tarik	RM8.6
DID 08	Teh Tarik Special	RM11.15
DID 09	Lime Juice (fresh)	RM9.55
DID 10	Lemon Juice (fresh)	RM9.55

# AI SUDORINKU (iced drinks)



冷たい飲み物

NEW

DMS 11

Yam Milkshake

## MILK SHAKES

DMS 01	Green Tea Milkshake	RM14.3
DMS 02	Avocado Milkshake	RM14.3
DMS 03	Twin's Milkshake	RM14.3
DMS 04	Honeydew Milkshake	RM12.7
DMS 05	Chocolate Milkshake	RM12.7
DMS 06	Blue Vanilla Milkshake	RM12.7
DMS 07	Strawberry Milkshake	RM12.7
DMS 08	Banana Milkshake	RM12.7
DMS 09	Milo Milkshake	RM12.7
DMS 10	Vanilla Milkshake	RM12.7
DMS 11	Yam Milkshake	RM12.7

## MILK TEA

DMT 01	Yam Milk Tea	RM7.95
DMT 02	Mint Milk Tea	RM7.95
DMT 03	Honeydew Milk Tea	RM7.95
DMT 04	Strawberry Milk Tea	RM7.95
DMT 05	Blueberry Milk Tea	RM7.95
DMT 06	Mango Milk Tea	RM7.95

## FRESHLY SQUEEZED JUICES

(without ice additional RM3.2)

DFS 01	Orange Juice	RM12.7
DFS 02	Apple Juice	RM12.7
DFS 03	Carrot Juice	RM12.7
DFS 04	Watermelon Juice	RM12.7



# Dezato デザート (dessert)



**NEW**  
DDE 02



DDE 03



**NEW** DDE 01

Caramel Pudding



**NEW**  
DDE 05



DDE 06

- |               |        |                          |         |
|---------------|--------|--------------------------|---------|
| <b>RM12.7</b> | DDE 01 | Caramel Pudding          | RM12.7  |
| <b>RM12.7</b> | DDE 02 | Matcha Pudding           | RM12.7  |
|               | DDE 03 | Mango Pudding            | RM12.1  |
|               | DDE 04 | Yam Pudding              | RM12.1  |
| <b>RM8.6</b>  | DDE 05 | Egg Custard              | RM8.6   |
|               | DDE 06 | Fresh Fruits             | RM20.65 |
|               |        | (Water Melon & Honeydew) |         |

Prices are inclusive of 6% GST

**NEW** こんにゃくフルーツゼリー  
**DDE 07 Konnyaku Fruit Jelly**  
 RM5.7 /pc



DDE 14

DDE 15

DDE 16



DDE 22

**TEMPURA ICE CREAM**

DDE 08	Matcha	RM12.7
DDE 09	Vanilla	RM9.55
DDE 10	Chocolate	RM9.55
DDE 11	Yam	RM9.55
DDE 12	Strawberry	RM9.55
DDE 13	Crispy Rice Matcha	RM15.9



DDE 08

**Mochi (2 pcs)**

DDE 14	Red Bean	RM12.7
DDE 15	Matcha	RM12.7
DDE 16	Black Sesame	RM12.7



**NEW**  
DDE 13

**ICE CREAM (1 scoop)**

(choice of topping red bean / fruit cocktail)

DDE 17	Matcha	RM8.9
DDE 18	Vanilla	RM5.7
DDE 19	Chocolate	RM5.7
DDE 20	Strawberry	RM5.7
<b>NEW</b> DDE 21	Yam	RM5.7

**ANMITSU**

DDE 22	Matcha	RM20.65
DDE 23	Vanilla (w/mango syrup)	RM19.1
DDE 24	Chocolate	RM19.1
DDE 25	Yam	RM19.1
DDE 26	Strawberry	RM19.1



**NEW**  
DDE 27  
**Matcha Pint**  
(473ml)  
**RM18.45**



# BRANCHES

## 1 Kiulap 1

Grd Flr, Unit 5, Block A, Q-Lap Complex,  
Kg Kiulap, BE 1518, B.S.B.  
Brunei Darussalam

tel: **+673 223 4012**  
h/p: **+673 885 9966**

Business Hours:  
Open Daily - 11:00am - 10:00pm

## 2 Gadong

Unit 4 & 5, 1st Floor, Block C,  
Abdul Razak Complex, Gadong,  
BE 3978 B.S.B. Brunei Darussalam

tel: **+673 244 3012**  
h/p: **+673 874 0012**

Business Hours:  
Open Daily - 11:00am - 2:30pm  
- 6:00pm - 10:30pm  
Friday - 6:00 pm - 10:30pm

## 3 Kuala Belait

Unit 1 & 2, Blk B, Grd Flr, Bgn. Pg.Hj Mohd  
Jadid, Lot 7561, Jin Jaya Nagara,  
Kuala Belait, KA 1931, Brunei Darussalam

tel: **+673 333 3993**  
h/p: **+673 872 2993**

Business Hours:  
Open Daily - 11:00am - 10:00pm

## 4 Serusop

No.5, Grd Flr, Block A, Bgn Desa Delima,  
Jin Muara, Kg Pancha Delima, BB 2313,  
Brunei Darussalam

tel: **+673 233 5512**  
h/p: **+673 873 6880**

Business Hours:  
Open Daily - 11:00am - 10:00pm

## 5 K2' Regent Square

Unit 1 & 2, Grd Flr, Block A, Regent Sq,  
Kg Kiulap, BE 1518, B.S.B.  
Brunei Darussalam

tel: **+673 223 4011**  
h/p: **+673 875 9866**

Business Hours:  
Open Daily - 11:00am - 10:30pm

## 6 Bunut

A2, Grd Flr, Block A, Bgn Lim Seng Kek,  
Spq 828, Kg Bunut, Jin Tutong, BF 1120,  
B.S.B. Brunei Darussalam

tel: **+673 265 4312**  
h/p: **+673 717 4312**

Business Hours:  
Open Daily - 11:00am - 2:30pm  
- 5:30pm - 10:00pm

## 7 Times Square

No.G1, Spg 13-29, Grd Flr,  
Times Square Shopping Center,  
Jin Barakas, Kg Jaya Setia Mukim  
Berakas,  
B.S.B. Brunei Darussalam

tel: **+673 234 2912**  
h/p: **+673 718 9912**

Business Hours:  
Open Daily - 11:00am - 10:00pm

## 8 Seria

No.80, Jin Bunga Melor,  
Seria, KB 1190, Brunei Darussalam

tel: **+673 322 1222**  
h/p: **+673 893 0628**

Business Hours:  
Open Daily - 11:00am - 10:00pm

## 9 Bandar Branch

Unit 41, Ground Floor,  
Jalan Sultan, BS8811  
B.S.B. Brunei Darussalam

tel: **+673 223 1881**  
h/p: **+673 719 9927**

Business Hours:  
Open Daily - 11:00am - 10:00pm

## 10 Miri, Malaysia

1st Floor, Block B, Taman Selera,  
Jalan Temenggong, Datok Oyong Lawai,  
98000 Miri, Sarawak, Malaysia

h/p: **+6017 8978898**

Business Hours:  
Open Daily - 11:00am - 10:00pm

## 11 Rimba

Tasik Rimba, Lot EG10,  
Rimba Mukim, Gadong,  
Daerah Brunei-Muara,  
BE 3119, Brunei Darussalam

tel: **+673 246 2828**  
h/p: **+673 718 8628**

Business Hours:  
Open Daily - 11:00am - 10:30pm

## 12 Bintang Plaza, Miri

Lot C, 48A, Ground Floor,  
Bintang Mega Mall,  
Miri, Sarawak, Malaysia

tel: **+6085 430 610**  
h/p: **+6011 1609 5757**

Business Hours:  
Open Daily - 11:00am - 10:00pm

*NOTE : Brunei Branches are closed every Friday  
from 12:00pm - 2:00pm for the prayers*



2017-V7

 Excapade Japanese Cuisine  excapade  excapadebrunei@gmail.com

All rights reserved. Unauthorised copying is strictly prohibited.