



Annual Report

2024 Year in Review

Table of Contents

- 1 **Mission, Vision, Values**
- 2 **Nationwide Impact**
- 3 **Regional Impact**
- 4 **Leadership Reflections**
- 5 **A Story from the Heart of an AHF Family**
- 6 **2024 Board of Directors**
- 7 **2024 Staff**
- 8 **Comprehensive Services**
- 10 **2024 Financial Overview**
- 12 **Family Program Highlights**
- 14 **Fundraising Events Highlights**
- 15 **Community Engagement**
- 16 **Thrive Comprehensive Campaign**
- 18 **Industrial Arts Therapy**
- 19 **Donor Highlight**
- 20 **Insights & Responses**
- 21 **Stay Connected**

Whole Child, Whole Family, Whole Care.

“When our daughter, Lorelei, was diagnosed and then passed away, the ground dropped out from underneath me. No one thinks about what they need when their world falls apart...But the Austin Hatcher Foundation does. Our entire family didn’t understand death. **My surviving children, husband and I have support to navigate death. It scares me to think of where we’d be if we didn’t have the Austin Hatcher Foundation.**”

-Ashley Truett

Mother of Clark, Max, Hollis, and Lorelei who passed away to Multi-Phenotype Acute Leukemia (MPAL) December 2022



Since inception, the Foundation has provided

\$35M in valued services
and support to



90,000+
Individuals



23
States



42
Children's Hospitals



Vision

Our vision is for every child diagnosed with cancer, and their family, to reach their full potential through education, balance, health, and well-being.



Mission

The Austin Hatcher Foundation provides a lifetime of free, comprehensive support to pediatric cancer patients and their families through mental, behavioral, educational, and social services, so they can cope in the present and thrive in the future.



Values

Integrity
Commitment
Compassion
Respect
Excellence

HOSPITALS SERVED SINCE INCEPTION

Alabama

Children's of Alabama; Birmingham

Arizona

Phoenix Children's; Phoenix

California

Miller Children's Hospital; Long Beach Children's Hospital of OC; Orange Co. Lucile Packard Children's; Palo Alto Rady Children's; San Diego Loma Linda Children's; Loma Linda

Connecticut

Connecticut Children's; Hartford Yale Children's Hospital; New Haven

Florida

Halifax Health Center, Daytona Beach Florida Children's; Orlando Miami Children's; Miami Arnold Palmer Children's; Orlando St. Mary's Children's; West Palm Beach

Georgia

Children's Healthcare of ATL; Atlanta NW GA Health Systems; Braselton

Illinois

Shiner's Hospital; Chicago Lurie Children's Hospital; Chicago

Indiana

St. Vincent Children's; Indianapolis Riley Children's; Indianapolis

Kansas

Univ. of Kansas Hospital; Kansas City

Louisiana

Our Lady of the Lake CH; Baton Rouge

Maine

Barbara Bush Children's; Portland

Maryland

John Hopkins Children's; Baltimore

Michigan

Children's of Michigan; Detroit

New York

Golisano Children's; Rochester St. Mary's Children; Bayside

North Carolina

Duke Children's Hospital; Durham NC Children's Hospital; Chapel Hill Brenner's Children's; Winston-Salem Levine Children's; Charlotte

Ohio

Nationwide Children's; Columbus Cincinnati Children's; Cincinnati

Pennsylvania

Hershey Children's; Hershey

South Carolina

Greenville Health System; Greenville

Tennessee

East Tennessee Children's; Knoxville Children's Hospital at Erlanger; Chattanooga Vanderbilt Children's; Nashville St. Jude Research Hospital; Memphis

Texas

Dell Children's Hospital; Austin

Utah

Primary Children's; Salt Lake City

Washington

Seattle Children's; Seattle

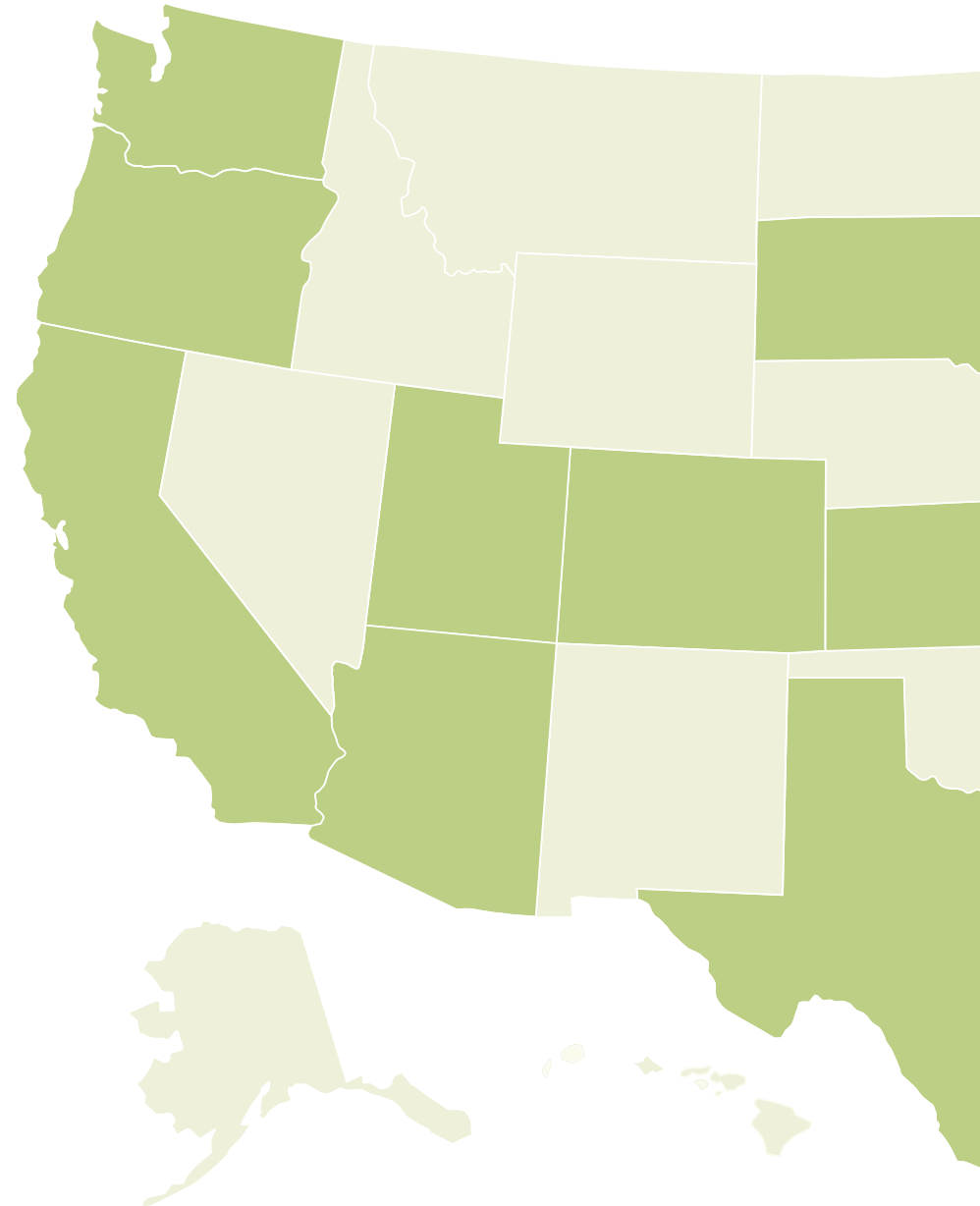
Wisconsin

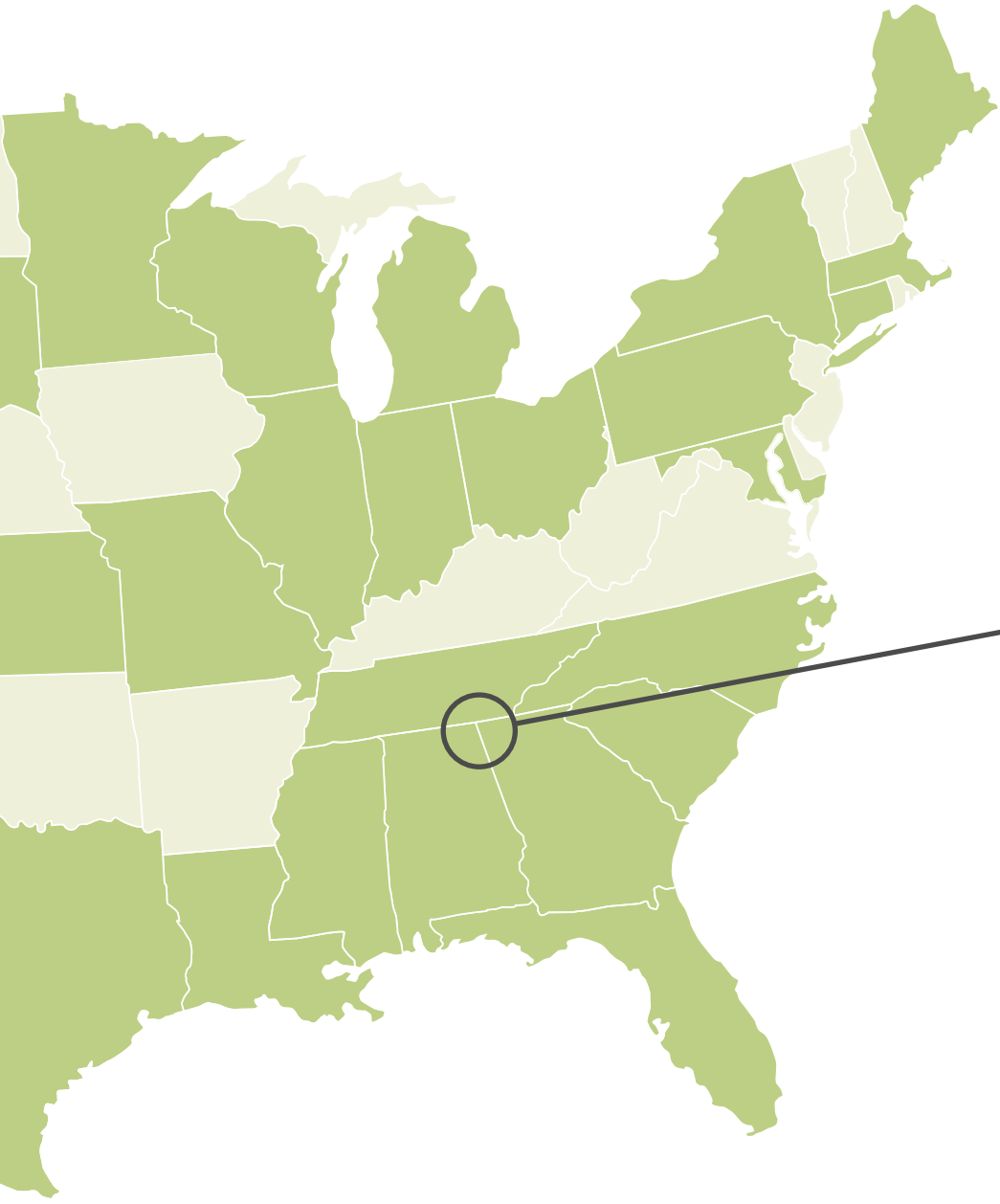
St. Vincent 's Children's; Green Bay

HATCH'S HERO:

Alabama, California, Colorado, Florida, Georgia, Illinois, Indiana, Massachusetts, Minnesota, Mississippi, Missouri, New York, Ohio, Oregon, Rhode Island, South Dakota, Tennessee, Texas, Utah, Wisconsin

National Service Area Since Inception



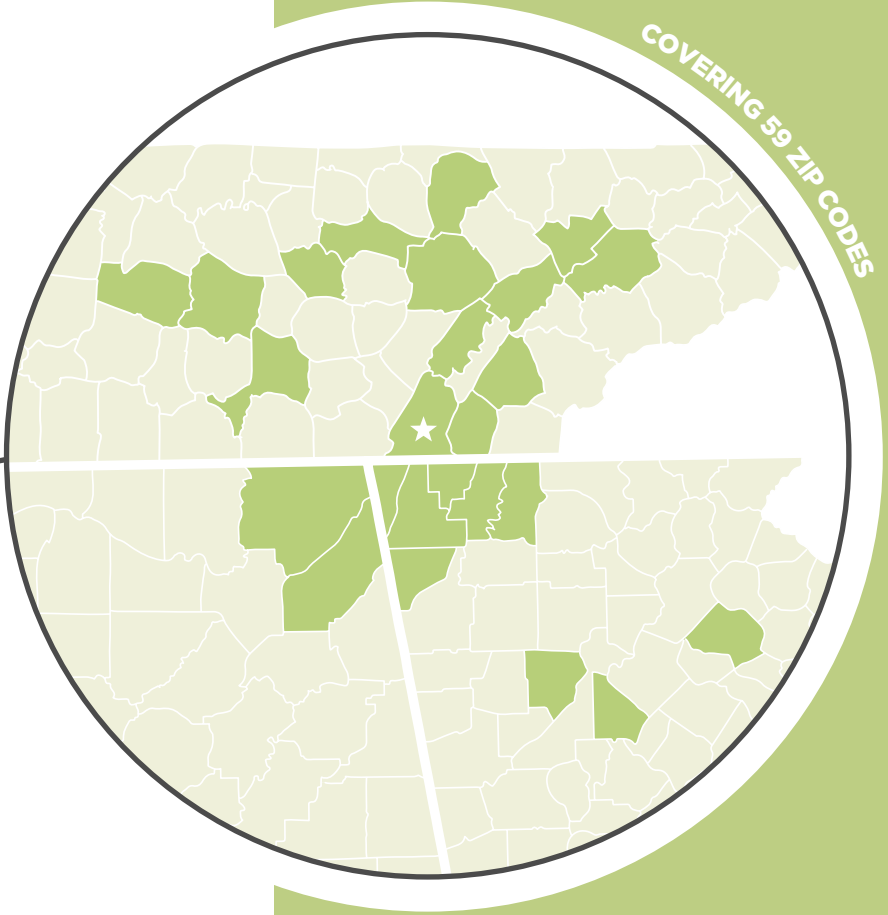


REGIONAL COUNTIES SERVED BY THE EDUCATION ADVANCEMENT CENTER

Georgia | Cobb, DeKalb, Jackson, Murray, Walker, Whitfield, Catoosa, Dade

Tennessee | Chattooga, Williamson, Rutherford, Hamilton, McMinn, Bradley, Rhea, Coffee, Knox, Anderson, Roane, Putnam, Cumberland, Fentress

Alabama | DeKalb, Jackson



★ **Austin Hatcher Foundation
Education Advancement Center**
Chattanooga, TN



Leadership Reflections

Dear Friends and Supporters,

2024 brought remarkable growth for the Austin Hatcher Foundation, highlighting the extraordinary impact of the Austin Hatcher Foundation community in supporting families facing pediatric cancer.

As I reflect on this growth, I am deeply grateful for how your generosity has changed lives and helped provide comprehensive, coordinated support to families dealing with the various challenges of childhood cancer.

Building on 19 years of success, the foundation remains true to its mission of providing a brighter future for pediatric cancer patients and their families through integrative medicine—focusing on the whole child and the whole family. That same mission guides us today, ensuring every child and family member receives the support and resources they need to navigate life's challenges.

Among the many ways our families benefited from your support this past year, our staff increased by 31% in 2024, allowing the Austin Hatcher Foundation to offer new services and additional programs – meaning more families supported and more lives changed. With the launch of key programs and events like Hatch's Hero and Playing for a Purpose, we continued expanding our reach and impact nationwide.

Because of your generosity towards our THRIVE Campaign announced in May 2024, renovations to the Foundation's Education Advancement Center are already underway, providing essential infrastructure and allowing access to much-needed green space for children and families served by the Foundation. Your continued support towards our goal will help ensure the organization's long-term stability and continued growth.

Together, we empower families to thrive during and after a childhood cancer diagnosis, overcoming life's barriers and opening doors for a brighter future than before diagnosis. Looking ahead, we continue to focus on expanding our reach as our commitment remains steadfast in providing additional programming to meet the evolving growth and needs of those we serve.

To those who have been part of our success, thank you. And to those just discovering the Austin Hatcher Foundation, I warmly invite you to join us on this invaluable journey of making a lasting impact.

A handwritten signature in black ink, appearing to read 'AJ Osborn'.

Amy Jo Osborn

President, CEO & Co-Founder

The Austin Hatcher Foundation for Pediatric Cancer



A Story from the Heart of an AHF Family- **The Otterman Family**

Dear Friends and Supporters,

When our journey with childhood cancer began, we were unprepared for the path that lay ahead. Our daughter, Simone, was a light in every sense of the word—happy, cheerful, and always smiling. Even when illness took hold, her radiance never dimmed.

I still remember the day our world changed. A routine visit turned into a nightmare when the doctor told us, “I want you to go immediately to the ER.” My heart stopped. We were thrown into the whirlwind of hospital visits, treatments, and unimaginable fears. The diagnosis—leukemia—left us reeling. Yet through the chaos and uncertainty, Simone’s resilience shone brightly.

As parents, we faced moments that seemed impossible—watching her endure treatments, surgeries, and the constant challenges of her illness. When we lost her, our hearts broke in ways that words cannot capture. Yet amidst the grief, we found a lifeline in the Austin Hatcher Foundation. This organization became a place of healing and understanding—a community where our family could process our loss and celebrate Simone’s legacy.

Austin Hatcher’s support extended to every member of our family, from counseling and grief support to creating opportunities for our children

to connect with others who truly understood their experiences. For Jade, our eldest, the Foundation became a space where she could share her feelings and find solace among peers who had faced similar losses.

Childhood cancer is a battle no family should face alone. Grief is a lifelong journey, and the Austin Hatcher Foundation has been with us every step of the way. Their programs not only provide comfort but also help families rebuild and rediscover hope. They transform lives—ours included. Your contributions ensure that families like ours have access to the resources they need during their darkest moments.

With heartfelt thanks,

Mike & Traci Otterman

Patients & Supporters, 2024 CLH Honoree Family
Parents to Jade, Simone, and Cali

Board of Directors

2024 Board of Directors

Dr. Rebecca Ashford

President - Chattanooga State
Community College

Jeffery Geismar

Director of Accounting & Finance -
PlayCore

Dr. James M. Osborn

Chairman of the Board; Orthopedic Spine
Surgeon

Dax Branam

Special Education Teacher - Thrasher
Elementary

Donna Gibson

Program Coordinator - UTC

Dr. Justin Robertson

Superintendent - Hamilton County Schools

Celeste Bradley

HR Attorney, DEI Trainer & Consultant,
Title IX Coordinator & Trainer

Ashley Guthrie

Family Nurse Practitioner

Steve Snyder

VP - Garland Carpet & Rug

John Doonan

President - IMSA (International Motor
Sports Association)

Gary Hathaway

Financial Services Professional Agent -
New York Life Insurance Company

Dr. Ryan Voskuil

Orthopedic Oncology Surgeon - Erlanger

Albert Leavengood

Service Strategy Senior Director -
Evernorth

Thomas White

Sr VP Investor Relations - Unum

Doug Evans

President & CEO - High Performance
Advisors

Cindy Lee

President & Founder - LYNC Logistics, LLC

Meg Wingfield

Community Representative

Ana Faulk

Spanish Translator - Faulk Translation

Amy Jo Osborn

President & CEO - Austin Hatcher
Foundation

Carol Yim

Educator

2025 Incoming Members

Matthew Boice

Senior Vice President, Media, Hemmings

Rob Carden

Assistant Deputy General Counsel,
Norfolk Southern Corporations

Allison Salkeld

VP, Global Total Rewards, Unum

Staff

2024 Staff

Beth Baker, Ed.S

STEAM Curriculum Coordinator

Noelle Bost, MS, MFT-I

Marriage and Family Therapist Intern

Mindy Brown, MS, CTRS

Recreational Therapist

Morgan Brummel

Graphic Designer & Photographer

Anna Carrington

Family Service Coordinator

Mara Daffron

Family Service Coordinator

Sofia Darras

Development Coordinator

Sarah Katherine Davis, MS, OTR/L

Occupational Therapist

Michelle Fast, PhD, HSP, NCSP

Licensed Psychologist

Daniel Fosbinder

Facilities & Industrial Arts Manager

Anna Fung, OTD, MOT, OTR/L

Occupational Therapist

Ashley Guthrie, FNP

Clinical Liaison

Melanie Hammontree

Director of Development

Matt Hastings

Program & Academic Coordinator

Loran Hygema

Motorsports Coordinator

Camilla Kalthoff

Patient Navigator

Susan Latta, LMFT, FT

Licensed Marriage & Family Therapist

Rocco Mansueto, M.Ed

Education Support Navigator

Quinn Miller

Executive Assistant

Georgia Moore

Events & Community Relations Coordinator

Amy Jo Osborn

President, CEO & Co-Founder

Dr. James M. Osborn

Medical Director & Co-Founder

Emily Osborne

Operations Manager

Megan Smith

Program & Community
Engagement Coordinator

Jenny Sticklely

Director of Human Resources

Sarah Taylor

Family Service Coordinator

Cameron Webb

Music Teacher

Shayna Webb

Marketing Coordinator

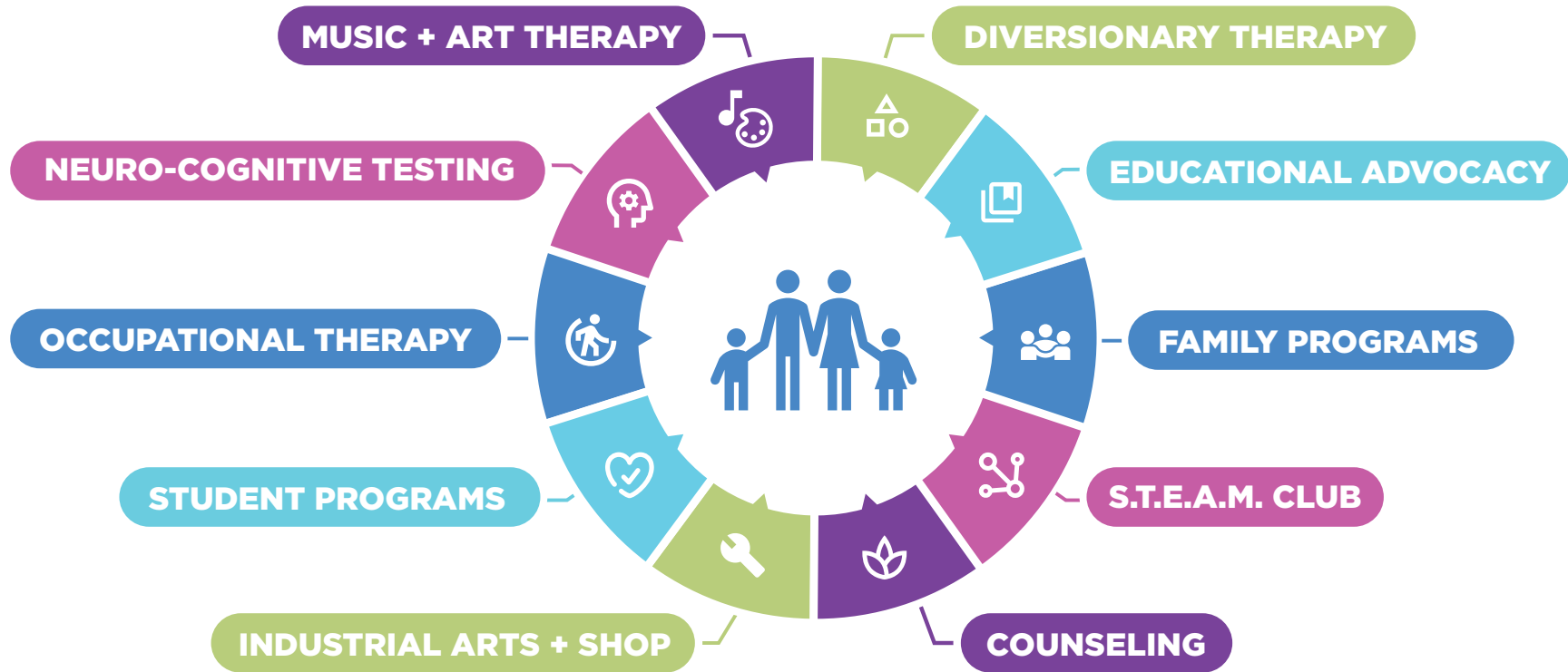
Walker Wright

Drumming Therapist

Rachel Youngblood, LMSW

Licensed Master Social Worker

All services are provided **at no cost...**



“To see your kid in the intensive care unit, connected to the dialysis machine, you feel like you are losing everything. Watching my son enjoying himself and having fun at the Austin Hatcher Foundation - whether he’s building a car in the auto shop or playing at a day camp - helps put my soul back into my body.”

-Luis Pineda Barrios

Father to Jesus & Tania. Jesus is a 3 year survivor of T-Cell Acute Lymphoblastic Leukemia



The experience of childhood cancer goes beyond diagnosis and affects every family member differently.

Through the Foundation's holistic, coordinated care, it offers a robust variety of therapies designed to support both individual and family recovery, **recognizing that each family member plays a crucial role in the overall healing process.**

The Foundation's approach is rooted in integrative medicine, focusing on the whole child - whole family . We believe true healing occurs when you address the physical, emotional, mental, and spiritual **needs of every family member.**

2024 Financial Overview

Trusted for **over 18 years.**

The Austin Hatcher Foundation's comprehensive programs and services are funded entirely through private charitable contributions from individual & corporate donors, private & public foundations, and fundraising events. The Foundation's funding ensures that every child and family facing childhood cancer receives essential therapies and support at no cost to them.

Through the generosity of our donors, we provide critical resources, including clinical services, occupational and recreational therapies, STEAM education programs, and family support initiatives. In 2024, contributions helped us expand our reach, impacting families across multiple communities and ensuring sustainable, high-quality care. These funds directly cover the costs of professional staff, evidence-based therapies, educational materials, program supplies, and specialized resources needed to empower families to thrive beyond a cancer diagnosis.

By investing in the Austin Hatcher Foundation, corporate partners and philanthropic supporters play a direct role in transforming lives, removing financial barriers to care, and ensuring that families receive the comprehensive support they need.

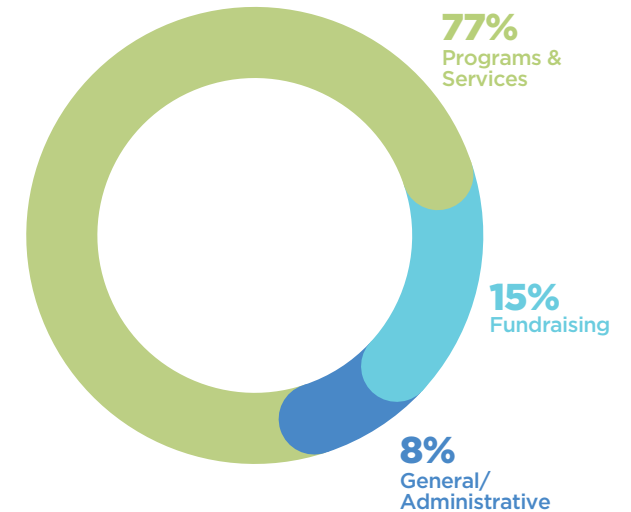
EXPENSES BREAKDOWN

\$4,593,421

Value of Therapy Services Provided at No-Cost

\$4,205,736

Total Income + In Kind



2008 - 2024 FINANCIAL + ASSET GROWTH

\$8,000,000

\$6,000,000

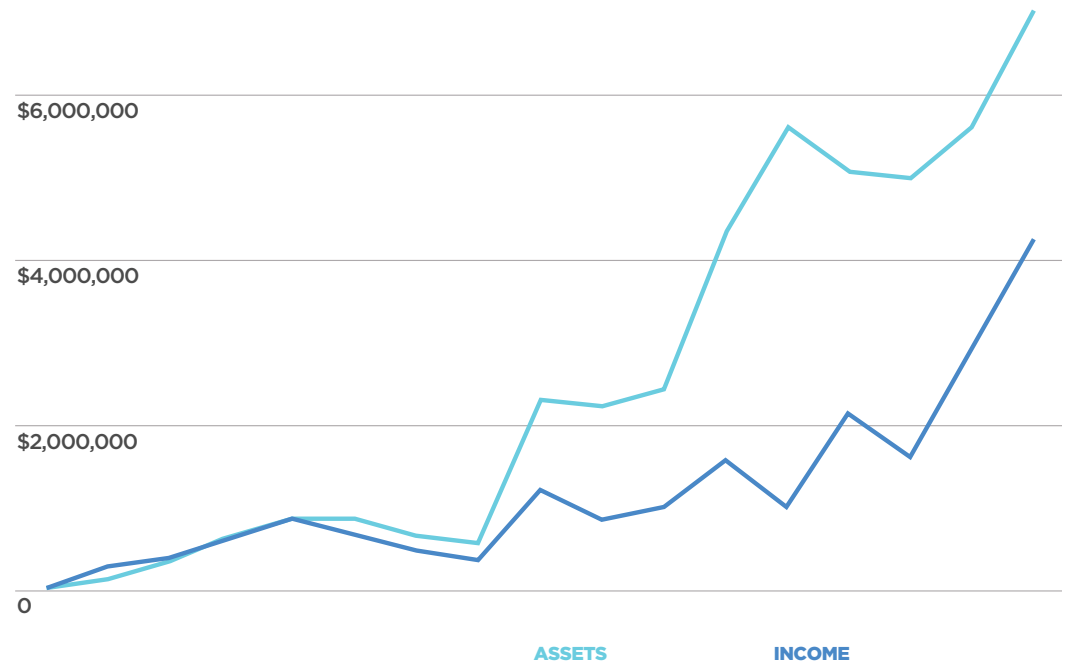
\$4,000,000

\$2,000,000

0

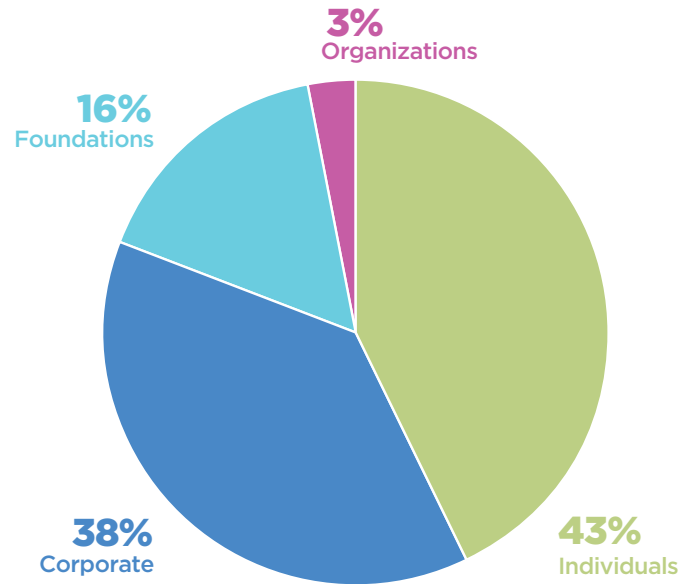
ASSETS

INCOME



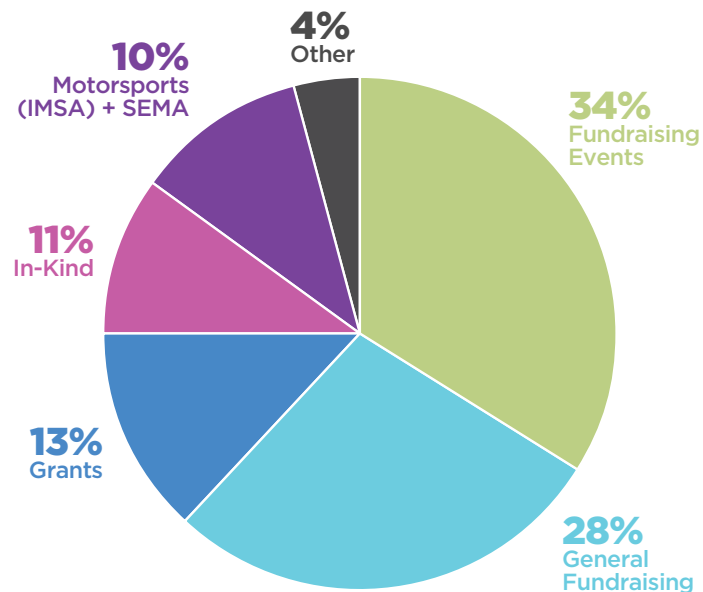
GIVING BREAKDOWN SOURCES

* EXCLUDING THRIVE DONATIONS



GIVING BREAKDOWN CATEGORIES

* EXCLUDING THRIVE DONATIONS



Finance Committee

Carrie Chambers

Senior Relationship Manager - First Bank

Jeffrey Geismar

Director of Accounting and Finance - PlayCore

Scott Imorde

President at RBM Venture Company

Blake Kinder

Senior Manager at HHM

Amy Nolan

Business Administration

Tom White

Sr VP Investor Relations

Our Pledge to You

The Austin Hatcher Foundation upholds the highest standards of integrity, accountability, and wisdom in stewarding every donation. Your generosity, partnership, and trust make a profound difference in the lives of families facing pediatric cancer. Thank you for your unwavering support



Family Programs

2024 COCACon Awards

The Austin Hatcher Foundation for Pediatric Cancer garnered top honors at the 2024 Children's Oncology Camping Association International (COCA-I) Convention. The Foundation received three coveted Professional's Choice awards: Best of COCA Newsletter, Best of COCA Impact/Annual Report, and Best of COCA Camp Activity, highlighting its innovative approaches and impactful contributions to the pediatric oncology community.



Mom's Gathering Craft Night



Valentine's Parent's Night Out



Siblings Day Camp



Grief Camp



Spring Break Camp



Fall Break Camp



May Parent's Day Out



Trunk or Treat



E-Racing



Road Atlanta



Honoring the Journey



July Summer Camp



December Parents' Day Out



June Summer Camp


1,113
 Individuals Served


2,289
 Family Program
 Event Participants


117
 New Referrals


345
 Family Programs


2,629
 Appointments

Fundraising Events

Support raised through the Foundation's annual fundraising events comprises over one-third of its annual operating budget, highlighting the crucial role these events play in expanding the Foundation's impact. We are deeply grateful to our corporate partners, volunteers, and staff, who ensure the success of these events year after year.



Monday After the Masters Golf Tournament



IMSA Races



Hit It For Hatch



Bubbles of Fun Run



LaCROSSE Out Cancer



Kickin' It For Kids With Cancer



Celebration of Life & Hope



Celebration of Life & Hope

Community Engagement

 **569**
Volunteers

 **4,307**
Volunteer Hours

 **177**
Community Engagement

 **419**
Tours

Playing for Purpose

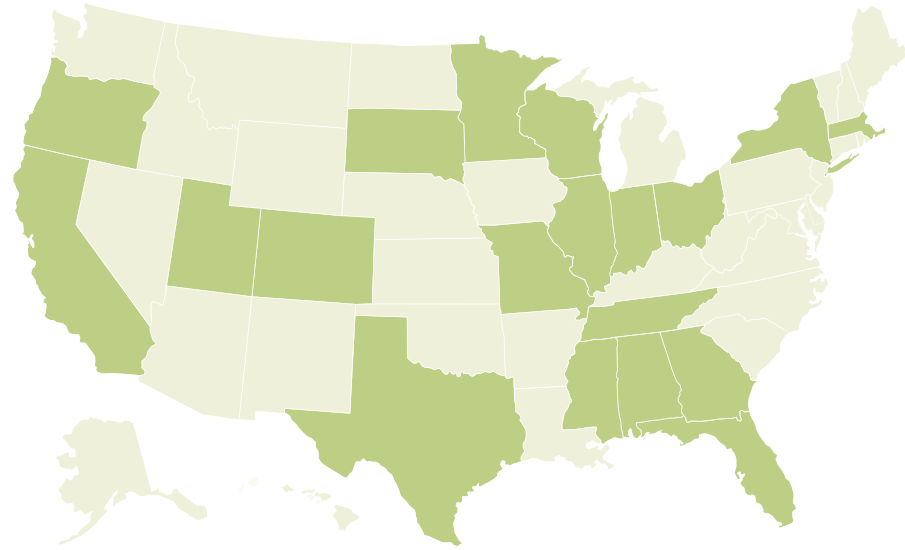
Launched in March 2024, Playing for a Purpose (Powered by Food City), is a nationwide innovative fundraising campaign designed to empower athletes, teams, and communities to support families affected by childhood cancer. This unique initiative allows any team, from any school or sports organization, to leverage their passion for sports and create a positive impact beyond the field, arena, or court by creating their own fundraising event to raise funds.

 **6**
Schools

 **820**
Students Served

Hatch's Hero

Officially launched in September of 2024, Hatch's Hero (Powered by Coca-Cola Consolidated) builds a community of hope, trust, and support for families that have shown incredible courage and resilience through the childhood cancer journey. Each individual family member is provided free support, resources, and a platform for their voice.



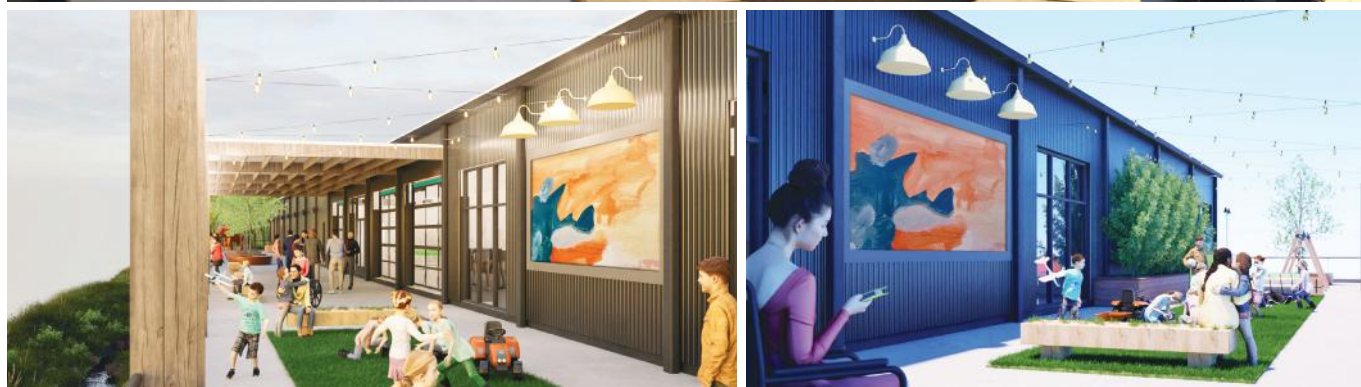
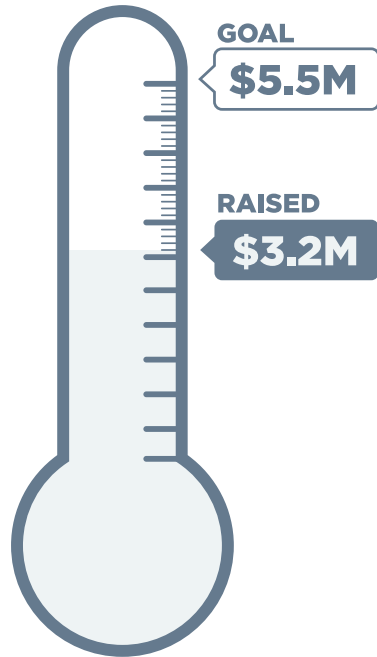
 **256**
Hatch's Heroes

 **20**
States Represented

 **42**
Different Cities



Thrive: Comprehensive Campaign



**Help us reach our goal.
Contribute today!**

Make a one time, monthly, or multi-year contribution. Your gift today empowers children and families facing pediatric cancer.



**Scan to take a tour of the
Foundation with our patients!**

Thrive: Facilities Expansion Update

The Austin Hatcher Foundation is thrilled to share the progress of our multi-phase facilities enhancement project, designed to better serve our families and support the continued growth of our programs.



Phase 1: Completed December 2024

Phase 1 of the project, completed in December 2024, focused on ensuring the structural integrity of our facility with the installation of a brand-new roof, ensuring a solid foundation for the next stages of our expansion.



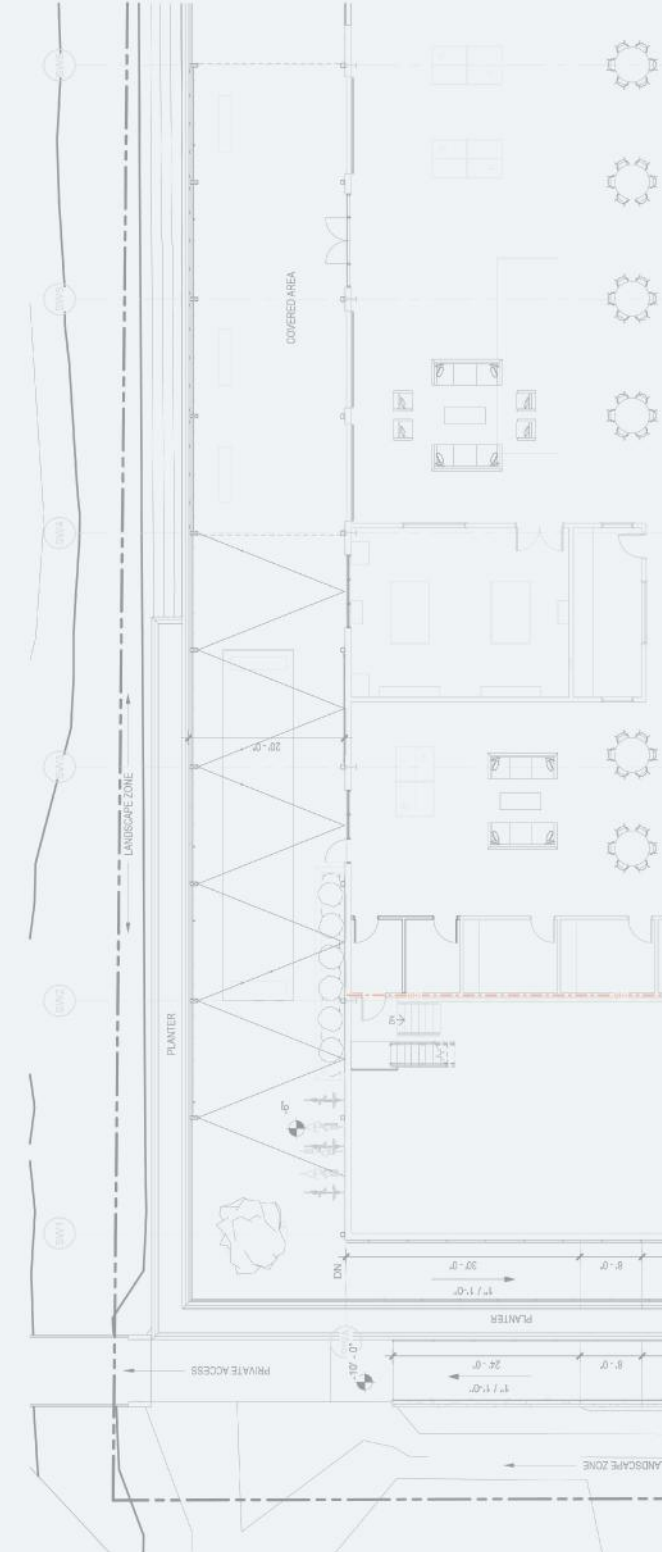
Phase 2: Spring 2025

This phase involves significant upgrades to our HVAC systems to redirect airflow throughout the facility, as well as the installation of drop ceilings and updated lighting to create a more inviting and functional space for therapy sessions, programming, and community events.



Phase 3: Expanding Outdoor Space

Looking ahead, Phase 3 will focus on adding a 4,800-square-foot outdoor space. This new area will seamlessly connect to the green space in Montague Park, underscoring our commitment to holistic healing by offering more opportunities for recreation, reflection, and connection with nature.



2024 Factory Five Mk4 Roadster Therapy Build



Industrial Arts Program

The Austin Hatcher Foundation auctioned a one-of-a-kind Factory Five Mk4 Roadster, built by young patients in our Industrial Arts Therapy Program. Hosted on Bring A Trailer, the auction supported our mission to provide comprehensive care for pediatric cancer families. This unique project not only showcased technical skills but also served as a powerful symbol of resilience and healing.





TRCC President, Chip Howalt



Cindy Howalt

Donor Highlight



TRCC, under the leadership of Chip Howalt, remains a steadfast supporter of the Austin Hatcher Foundation. As a generous donor for nearly two decades, including eight consecutive years as the Presenting Sponsor for the Celebration of Life and Hope, TRCC and the Howalt family have significantly contributed to the Foundation’s growth since its establishment.

Headquartered in Dalton, Georgia, TRCC specializes in developing innovative chemical and manufacturing solutions across a wide range of industries. Their expertise encompasses products such as latex, adhesives, and asphalt modifiers, serving markets including carpet, flooring, textiles, healthcare, and hygiene.

Since its founding in 1951 as a supplier of latex to the emerging tufted carpet and rug industry, TRCC has expanded its global reach, enabling the company to export to all continents and establish manufacturing and distribution facilities around the world.

TRCC is committed to making a positive impact in the community through charitable support and employee volunteer hours to both local and national charities like the Austin Hatcher Foundation.

2024 Annual Corporate Partners



In Kind Partners



Key Insights & Questions

1. Why is family-centered psychosocial care a critical part of pediatric oncology?

Cancer affects the entire family, not just the child diagnosed. Research shows that effective psychosocial care helps families adapt to the evolving challenges of treatment and survivorship. The Austin Hatcher Foundation takes an interdisciplinary approach, offering early assessments, individualized interventions, and ongoing support to ensure that each family member receives the resources they need to heal, grow, and succeed.

2. How does the Austin Hatcher Foundation's approach to care differ from hospitals and medical institutions?

While hospitals focus on treating the acute medical condition, the Austin Hatcher Foundation is the only organization in the nation dedicated to providing free, lifelong psychosocial and rehabilitative care for the entire family. Unlike hospitals that focus solely on the patient's medical treatment, the Austin Hatcher Foundation treats the entire family as a unit, recognizing that siblings and parents also endure emotional and financial hardships. Programs address family dynamics, stress management, and economic stability, ensuring that parents and caregivers are given the tools they need to support their child while also maintaining their own mental and emotional health.

This comprehensive, whole-family model of care simply does not exist anywhere else. The Austin Hatcher Foundation is breaking barriers, creating a blueprint for what pediatric cancer care should be—a place where healing extends beyond chemotherapy and radiation, where children and families are empowered, and where therapy is innovative, engaging, and truly life-changing.

3. How does the Austin Hatcher Foundation integrate innovative and advanced therapies into its programs?

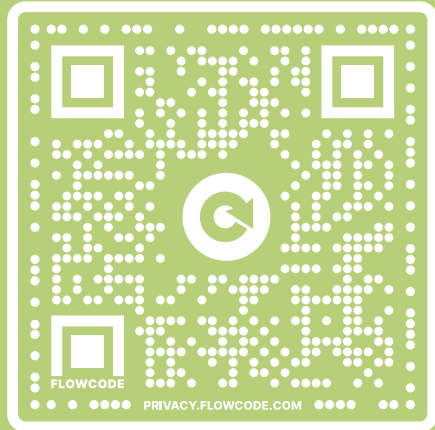
The Foundation's approach is rooted in evidence-based therapies and innovative interventions that focus on whole-family healing. We integrate psychology, occupational therapy, education services, and mental health support under one roof, creating a seamless and holistic care model. We also utilize emerging research in neurocognitive rehabilitation to help children, siblings, and parents/caregivers recover from the cognitive and emotional impact of cancer treatment.

4. Why does the Austin Hatcher Foundation provide services for the entire family, not just the child with cancer?

Cancer affects every member of the family—siblings, parents, and caregivers all experience emotional, financial, and psychological challenges. The Foundation's programs ensure that each family member receives individualized care, including counseling, grief support, financial guidance, and life skills training, so they can navigate their cancer journey together and build resilience for the future.



Stay Connected



JOIN

Hatch's Monthly Giving Club

Year-round impact.

Because cancer's impact lasts a lifetime.

Join our text blasts!

Text "AHF" to (423) 243-3471



Visit our website!
hatcherfoundation.org



Receive our **monthly community newsletter**



LinkedIn:
Austin Hatcher Foundation



Instagram:
@austinhatcherfo



Facebook:
Austin Hatcher Foundation



THE AUSTIN HATCHER FOUNDATION provides free, integrative, evidence-based, comprehensive care to children with cancer and every individual family member navigating the challenges of pediatric cancer. The Foundation empowers families to succeed beyond a cancer diagnosis through innovative mental, behavioral, and social therapies, educational resources, and family-centered programs.

hatcherfoundation.org
1705 S HOLTZCLAW AVE, CHATTANOOGA, TN 37404

