

Winchelsea Star

Price \$1

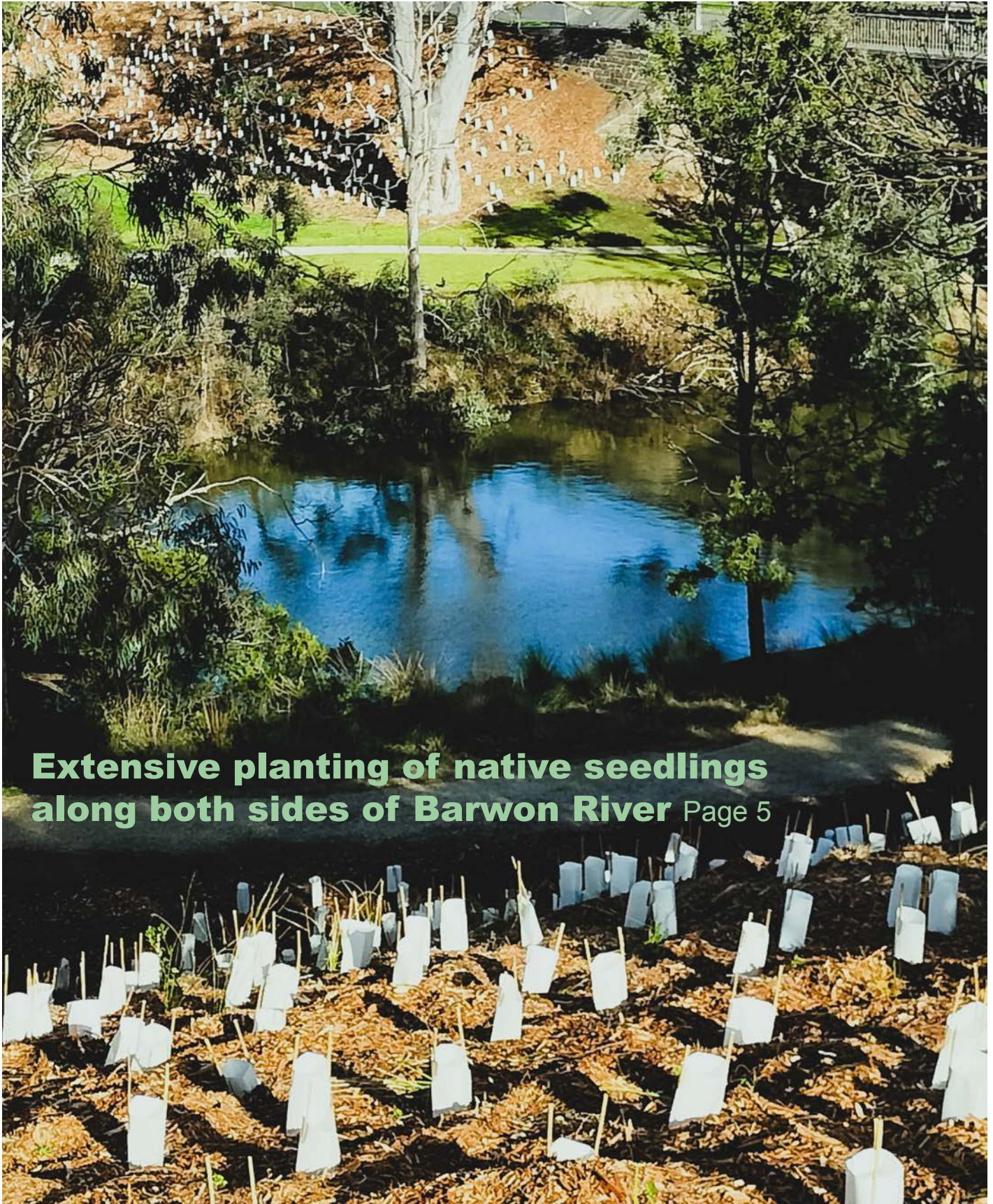
Your Weekly Community Newspaper

Since 1977

Vol 48 Ed 28

Tuesday 22 July 2025

winchelseastar.org.au



**Extensive planting of native seedlings
along both sides of Barwon River** Page 5

CONTENTS

22 July 2025

FEATURES

Cover Story: Native tree planting along the Barwon River	
Look what your kids can do	Rhani Bayon 2
Winchelsea Forum	Elaine Atkinson 3
Seedling Planting in Winchelsea	C Forgensen 5
More battery drop off stations	Vic Government 10
Remembering Mike Tucker	Growing Winchelsea 14
Riverside Amphitheatre	Elaine Atkinson 15
Worpel Custom Furniture	Sam Worpel 21
Native Flower Workshops	Carrie Vanderpol 21

PUBLIC SERVICE

Councillor Catch-up	Tony Phelps 16
State Funeral for Hon Brian Dixon	Vic Government 16

PHILOSOPHY & THE ARTS

Cromwell's Quirks On Love	C Forgensen 7
Bringing creative projects to life	Vic Government 9

HOUSING

Strongest home sales for 3 years	HIA 12
Crisis accommodation	CHH 12
Windfall Gains Tax	Growing Winch 13
Social and affordable homes	Vic Government 13
Housing for the needy	Vic Government 13

CHURCHES

Church Services & Thought of Week	John Bader 14
Birregurra Christ Church	Caroline Ellsmore 14

HISTORY & CULTURE

Murdeduke Homestead	Michael Donovan 9
---------------------	-------------------

COMMUNITY INFORMATION

Community Noticeboard	11
Services & Activities in Winchelsea	22
What's On July/August 2025	18
Winchelsea Facebook Pages	30

FARMING

'Spirit of the Bush' competition	Rural Aid 23
Resilient Farming Course	Landcare 23
When will my dam fill?	DEECA 23

HEALTH & WELL BEING

Women's health	Vic Government 27
Early intervention for autism	Autism Awareness 27
RSV vaccinations for aged care	Vic Government 27
New paramedic recruits deployed	Vic Government 27

SPORTS & EXERCISE

Parkrun 71 Winchelsea	Neil McInnes 25
Winchelsea Pickleball	Fletcher Allen 29
Winchelsea Cricket Club	WCC 29
Rising Stars Netball	Shae Callahan 29

Look what your kids can do

Rhani Bayon



Local artist Lauren Green ran two 'Winch Kids art Club' Workshops on Thursday in the Winchelsea Shire Hall. The kids had a wonderful time interpreting pictures of animals, mixing colours and creating masterpieces.

The kids Art Club workshop was just one of several school holiday activities offered at the hall, other included a dance workshop from Jacques Dance Studio, The SCS Youth drop in sessions and a family games afternoon.

If you want to see more activities available in the Shire over the next school holidays or during term, get in touch with Rhani at shirehall@winchhouse.org.au



Future Events 4 Winchelsea – Have Your Say!

If you want your ideas heard, come along to the Winchelsea Forum
Monday, 11 August 2025 Eastern Reserve, Winchelsea

Elaine Atkinson

The Winchelsea Forum is inviting community members to help shape the future of local events by sharing their thoughts on what types of events they'd like to see, when they should be held, and any other ideas or feedback.

A short survey is now open for community input. The results will directly inform a collaborative **brainstorming workshop** taking place at the Forum on **Monday, 11 August 2025 at Eastern Reserve, Winchelsea**.

Whether you're passionate about music, markets, sport, arts, agriculture, culture, family activities, or something entirely different – **your voice matters**. This is your chance to influence the future of events in our town.

Complete the survey and help shape the calendar of events that reflect our community's spirit, celebrates its unique character and promotes our natural assets.

Tell us what you think – and be part of creating something great for Winchelsea!

Survey Link: Winchelsea Events - Have your Say!

Forum: Future Events 4 Winchelsea

When: Monday, 11 August 2025 at 7.00 pm

Where: The Hub Eastern Reserve, Winchelsea

Who should attend: Community organisations, Service providers, Surf Coast Shire staff, volunteers, interested community members



Community Market

More information: Elaine Atkinson, Mobile 0458009616
Email: secretary@growingwinchelsea.com

Showcasing 48 years of grassroots success

The highly anticipated Future Events 4 Winchelsea Forum will take place on Monday, 11 August 2025 at Eastern Reserve Winchelsea, bringing together community organisations, key stakeholders, and interested community members for an inspiring and practical evening focused on shaping the future of local events.

One of the key highlights will be the extraordinary story of a small, volunteer-run community event that began 48 years ago and has since grown into a major annual attraction, drawing over 22,000 visitors. This enduring success is a testament to the power of community spirit, resilience, and local innovation.

"This is more than just an event planning forum," said John Tebbutt, President of Growing Winchelsea. "It's a celebration of what small towns can achieve with passion, creativity, and

collective effort. Winchelsea has an incredible story to tell with its unique character — let's put our town on the map."

The forum will feature guest speakers providing practical information and valuable insights into how a small community works in harmony, networking opportunities, a brainstorming session designed to provide a starting point for future events to support the sustainability and growth of Winchelsea and District.

The Future Events 4 Winchelsea Forum is a community led initiative proudly supported by Community Bank, Winchelsea & District and is designed to strengthen the future of community events. By sharing real-world stories and proven strategies, **the forum will aim to empower the community to create events that engage, inspire, and grow over time providing fun ways to connect the community and build lasting friendships.**

WINCHELSEA Osteopathic Clinic

Back pain • Neck pain • Sporting injuries • Headaches • Shoulder pain • Sciatica

Ph: 5267 2948

34 Main Street, Winchelsea (within *The Exchange*)

Book online at:

www.winchelseaosteopathicclinic.com.au



Winchelsea Projects Update

JULY 2025



Greening and Stormwater treatment

Work on the Winchelsea Greening and Stormwater Treatment Project is planned to start mid-August.

The project will include planting of 33 trees on nature strips in Hesse and Armytage streets, each with individual drainage systems fed by stormwater runoff.

The plantings will create greener, cooler streets, and installation of the drainage systems will filter and improve the quality of stormwater running into the Barwon River. They will also help reduce runoff volume and erosion.

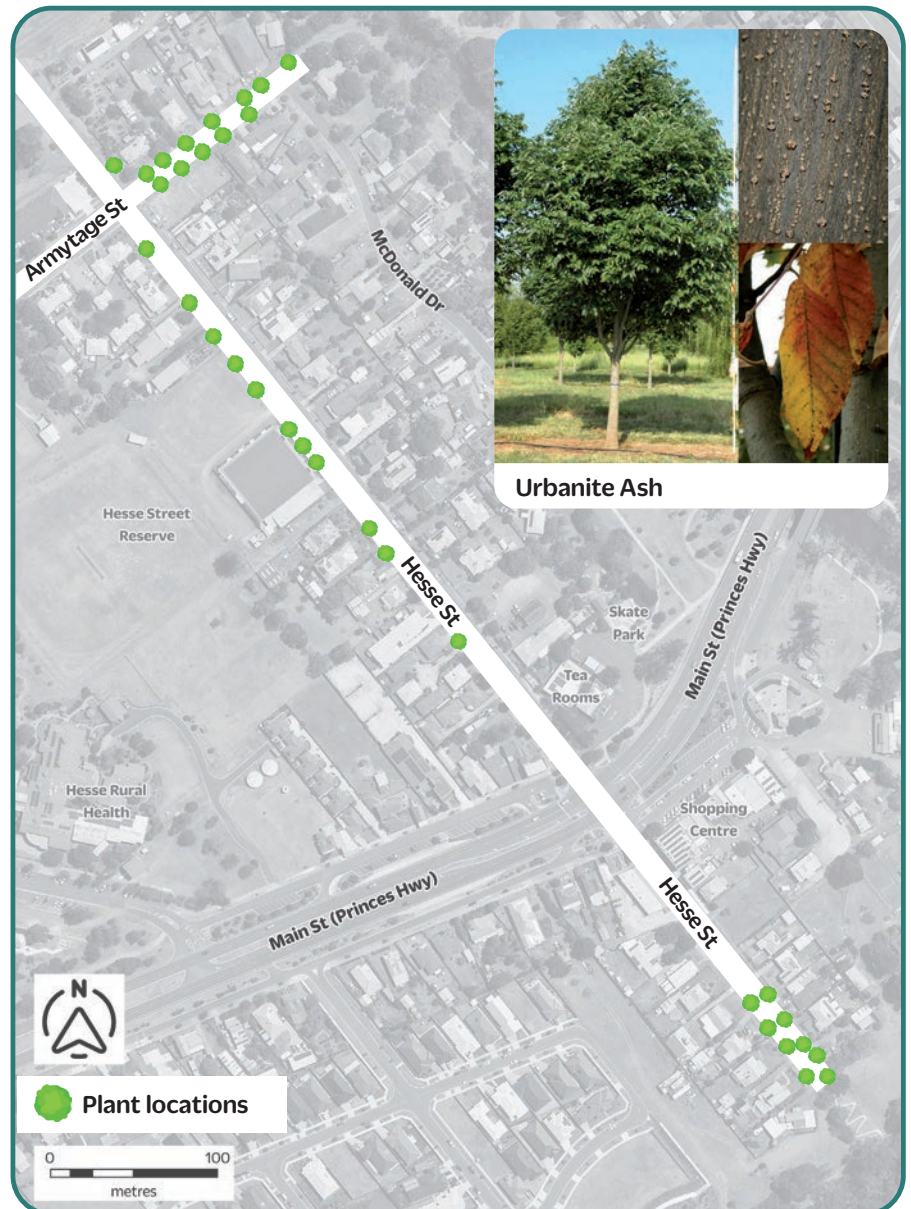
Plans for the project have been reviewed and updated following consultation with residents. Council is now checking back in with residents on the updated designs.

Work is expected to be complete late October.

The 33 trees will be Urbanite Ash, chosen for suitability and resilience as street trees, with low attraction to corellas and cockatoos.

The Greening and Stormwater Project emerged from the Winchelsea Integrated Water Management Plan and aligns with and supports Growing Winchelsea's community vision.

It will also include installation of a gross pollutant trap on the south side of Main Street, which will help prevent street litter from entering the drainage system.



Council appreciates funding from the Victorian Government's Department of Energy, Environment and Climate Action enabling delivery of the project.

surfcoast.vic.gov.au/winchprojects



Seedling Planting in Winchelsea

Cromwell Forgensen

In recent months, Growing Winchelsea, a community-led initiative, has seen significant seedling planting efforts in Winchelsea. GenU planting teams planted approximately 2,000 native and indigenous plants, grown from seed, to support the Corella Management Plan. Additionally, the "Branching Out" project aims to plant about 1,200 trees across the shire, contributing to a greener, cooler, and more appealing environment.

Details of recent plantings:

Corella Management Plan:

GenU planting teams planted 2,000 native and indigenous plants in two areas, specifically to address the corella population.

"Branching Out" Project:

This initiative, funded by the council, will see the planting of approximately 1,200 trees across the shire.

TreeProject:

The TreeProject, a Landcare initiative, involves volunteer growers nurturing seedlings in their backyards for several months before they are planted out by Landcare groups or landholders during winter and early spring.



Community Garden:

Growing Winchelsea is also involved in developing a community garden, fostering community roots and contributing to food security.

Winch Teens We Need You!!

This is your call out! Winch Teens aged 12-17, are you ready to unleash your design skills and be a part of something big? WYLD is re-launching and we need your talent to create an iconic new logo!



The winning design will not only become the face of WYLD but also SNAG A \$50 pizza voucher!


Let's get creative! Submit your design via messenger through the WYLD Facebook page before 25th July 2025 and be a part of the WYLD journey. Are you up for the challenge?



FUTURE EVENTS 4 WINCHELSEA!

MONDAY AUGUST 11TH
7PM
@ EASTERN RESERVE HUB

Be **INSPIRED** by the story of how a small volunteer run community event in Lucindale that started 48 years ago is still going strong with 22,000 visitors each year!




Kids enjoying a day out at the community event in Lucindale.

YOUR VOICE MATTERS!

Come along and share your ideas for a Major Annual Event to put our town on the map in 2026!



Community Bank
Winchelsea and District
Bendigo Bank



SCAN TO RSVP OR LEARN MORE.








REGISTERED Building Practitioner

SPECIALISING IN QUALITY

- NEW HOMES
- ALTERATIONS
- CARPORTS
- BATHROOMS
- EXTENSIONS
- DECKS
- VERANDAHs
- WINDOW REPLACEMENTS
- RENOVATIONS
- PERGOLAS
- RE-GLADS

Leigh Lupton
0438 840 104

LEIGHLUPTON17@GMAIL.COM

Est. 1977



HESSE RURAL HEALTH

Acute Care*
Urgent Care*
Residential Aged Care*
Community Nursing
Dietetics
Physiotherapy
Occupational Therapy

Diabetes Education
Social Support Groups
Counselling
Home Care
Health Promotion
* services from Winchelsea only

www.hesseruralhealth.com.au
P: (03) 5267 1200 E: reception@hesse.vic.gov.au

Winchelsea Taxis is now Surfcoast Taxis

Our fleet of vehicles are growing to all late models and we are covering an extended area including Winchelsea, Colac, Bannockburn, Inverleigh, Great Ocean Road and Geelong.

We have a fleet of 10 seater Maxi Vans, all with capacity to carry wheelchairs.

Surfcoast Taxis Pty Ltd
All Bookings: 0408 325 992
Fax: 5267 2699
Email: bannotaxis@gmail.com
(Admin or Stan 0429 672 888)
66A Batson Street
Winchelsea 3241



Accounts NDIS provider. TAC, DVA etc

NDIS provider number 4050001044
NDIS provider number 4050001048



Book your next ride with **smartHAIL**

Book Track Pay Rate

Download on the App Store GET IT ON Google Play



SUNNY GYM
GYM BUT JOYFUL

Strength training and martial arts for the whole family in Winchelsea

PERSONAL TRAINING
STRENGTH CLASSES
KIDS KUNG FU
BOXING

Intro Deal: \$35 for 2 weeks*

0401417387
sunnysgym.com.au
evan@sunnysgym.com.au

*group classes only, excludes personal training.





Moriac Veterinary Clinic
0447 781 089
PHONE 24 HOURS
784 Hendy Main Road Moriac
info@moriacvet.com
www.moriacvetclinic.com.au
HOURS // Monday - Friday: 8am - 5pm


- Domestic and Commercial hire equipment
- Industrial welding gas
- Digging and Earthmoving equipment
- New trailers and trailer repairs
- Firewood
- Stockists of Royal Oil Lubricants products
- LPG for domestic and commercial requirements

Give Chris and the Team a call on **5232 1177** or email info@colachire.com.au

www.colachire.com.au

101 Wallace St Colac 3250





SIMPLE STORAGE SOLUTIONS

- Personal & Business Storage
- Boat, Caravan & Vehicle Storage
- High Security Premises
- Individually Alarmed Units
- Electric Gate Access
- 7 Day Access & CCTV

YOUR STORAGE PROBLEMS SOLVED

5267 3116
6 ALSOP DRIVE, WINCHELSEA 3241



Cromwell's Quirks

Between Wanting and Willing: A Discourse on Love

By Cromwell Forgansen

"Love" might be interpreted as a word that uses us, and often with gay abandon, casting its net over 67% of all current pop songs for instance, (quite a decline since the '80s), tree trunk carvings, woven into vows, whispered down the generations and declared perhaps a mite too defensively when things seem to sour. Confidently used as a shorthand for much, (according to context we presume), yet when pressed to define it beyond the emotional, many of us often uncomfortably hesitate.

Love might seem elusive, too vast to be pinned down by mere logic, but not for all of us. For some, the ancient definitions will always endure. One such formula, passed down through generations, sets Love not by how it makes us feel, rather, by what it demands of us, to whitt:

Love = Courage + Industry + Grace,
(i.e. giving and forgiving), **+ Suffering.**

In short: giving, forgiving, enduring.

Now this is obviously not the Love of fleeting bliss. It's the kind that moves people to labor, to sacrifice, to stay. It asks not what one feels in the moment, but what one is willing to do even when the warmer feelings seem elusive.

Yet even so, the emotional side of Love, the longing to be seen, safe, wanted, is far from trivial. For many, Love begins as a felt response. We "fall" into this kind of Love not with labor, but with resonance. Someone understands us, delights in us, shines light on a side we feel better about in our Selves. Whether person, principle, or god, that initial spark matters. It pulls us toward commitment long before we know what commitment truly means.

And here, a useful spectrum emerges: between wanting and willing. Between Love as an internal warmth, and Love as an external offering, both are very real, and very human, (amongst others of course, (this course), few could argue against the courage of a Mother elephant defending its calf, or a bee striving all the harder for the collective when times are tough, the giving nature of dolphins, {who will catch food for animals, even humans, who would otherwise starve}, the unflinching forgiveness of most dogs we know, and the significant suffering the raven is renowned for, to ensure the well-being of its mate and offspring).

We see this tension play out not only in relationships, but in how people devote themselves to ideals. A citizen may love their country through sacrifice, not because it showers them in joy, but because they believe in what it stands for. A volunteer may love the destitute, not for comfort, but because their compassion demands action. A believer may love their god, not because every prayer is answered, but because their faith gives spiritual shape to life's vicissitudes. For every one of us on the more Wanting end of the spectrum who might find emotional uplift in their religious devotion, a "feel-good" experience of peace, belonging, transcendence, there are others on the more Willing end of the spectrum who have decided and prepared to endure hardship, observe ritual, and face with equanimity any losses for the sake of spiritual offering. All could be deemed forms or expressions of Love, shaped by how they begin and what they become.

One of the clearest examples of this spectrum becomes clear when Love is formalised through marriage, be it a felt Love, or a Forged Love. For example, across many cultures people distinguish between "love-marriages" and "arranged-marriages".

Love marriages often commence with feelings, sparks of romance, chemistry, mutual delight. The union is chosen based on emotional alignment and celebrated for its spontaneity. Yet when the feeling fades, then if feelings were all that were cultivated over that time together, the structure may falter, leading to either a jaded withdrawal from giving and receiving Love ever again, or, a scramble for new beginning/s ... left unattended this latter can spiral into what some call "serial monogamy", with no view of eternity other than blind optimism. In this version, Love is dynamic but fragile, beautiful when tended, but prone to erosion when neglected.

Arranged marriages, by contrast, commence with commitment. The couple may know little of and even feel less for one another, but they choose, or are guided into, a union that values longevity and growth over transitory feelings. Families support the structure. The couple invests: courage to step into the unknown, industry to build shared life, grace to forgive and give to each the other, and suffering to endure challenges together.

Worthy of remark is how uniformly the many relevant studies demonstrate over and over again how the vast majority of arranged marriages often last longer and grow deeper. Not because they begin with stronger emotion, but because they're rooted in chosen responsibility. Partners evolve together, forge resilience, and build social and financial capital that would otherwise be reset with each new chapter of serial monogamy. This is neither to romanticize hardship nor to dismiss personal autonomy. But it does suggest that Love, when built through effort, may hold sturdier ground than Love built on feelings alone.

Perhaps the ancient formula above isn't just the definition of Love oldies such as I like to think of it as, rather, defines the actual path of its evolution. Feeling may initiate the bond. But doing is what sustains it.

Love scarcely stops at human relationships, some of us observe greater Love for principles, movements, nations, deities and so forth, than they do for individual humans. We love ideas we'll never fully touch. And when we do, we enact love without expectation of return. No flag has ever hugged a soldier. No constitution has whispered "I love you." Yet people consciously choose to die for these things. Because Love, in its deepest form, isn't always reciprocal. It's directional, sacrificial, and profound.

To "fall" into love might be to feel, but to act, to build, to suffer, to stay, these are more akin to "climbing" up to Love.

And maybe that's what love truly asks of us—not that it always feels good, but that we are willing to stand beside it even when it doesn't. To **be** loved is to feel lifted. To love is to lift, despite the weight.

Along the spectrum twixt wanting and willing, we find the shape of our truest devotions.



Winchelsea Community House Inc. A6247K

28 Hesse Street, PO BOX 75, WINCHELSEA, Vic. 3241

Phone: (03) 5267 2028

Email: manager@winchhouse.org.au

ABN: 48 932 340 254

Mother Goose Song & Rhyme

Every Wednesday at 2pm

During school terms

Free for parents and caregivers with children of all ages. No bookings required just come and join in!

Phonics with Robot Reg

Friday Mornings

Walkers – 2 years 10.15am

Pre-School 3 – 5years 11.15am

'A fun, High energy class to introduce and teach Phonics Skills to Kids'

Bookings at robotreg.com.au

2 x Toys for 2 weeks - \$2

No Subscription required.



Mon - Fri 9-2 at Winch House

WINCHELSEA KNITTING GROUP

Thursday Mornings 10.30 -12.00
Winchelsea community house.

All Welcome, Learn to knit or bring a project to work on while you enjoy a cuppa and a chat



TAI CHI

Friday Mornings in the Winchelsea Community house
9am - 10am

\$10 Per Class



Chatty Café

Fridays 10.30am – 12.30pm

"Sip, Chat, Share, Care" in the Winchelsea Shire Hall. Everyone Welcome, Gold coin donation.



Yoga

At the Winchelsea Shire Hall

Monday Nights 7pm
Vinyasa Yoga

Thursday Nights 6.30pm
Mat Pilates

Saturday Morning 8.30am
Yoga Flow

10 Class Pass – \$190

5 Class Pass – \$105

3 Class Pass – \$69

Casual Class – \$25

Craft & Crochet Group



\$5 per person.

1pm, every second Saturday
in the Winchelsea community house.

Register your interest at
recep

Next Class, July 26th

Mansions that made Winchelsea

Murdeduke Homestead

Mícheál P O'Dhonnabháin

Just a short drive West of the modern town of Winchelsea is the property known as Murdeduke. Settled on the shores of Lake Murdeduke, this founding colonial pastoral property was instrumental in the growth of the town.

Local Winchelsea Councillor and historian, Wilhelm L. Koenig describes that Gulidjan people lived historically in a large settlement on the shores of lake Murdeduke, west of Winchelsea.



Murdeduke Drone shot



Murdeduke 1970

Koenig records that the 'the hunting grounds of Gulidjan and Wadawurrung people were inherited and held by warriors by force of arms against conquest and invasion'.

In 1851 Henry Hopkins handed over Wormbete Station to his son John and took up the lease of part of the Mt Hesse run held by John Highett (after whom the Geelong suburb of Highton is named) who had been in partnership with William Harding (After whom Harding Street in Winchelsea was named). William Harding's sister, Elizabeth, lived with Harding and Highett until her marriage to Thomas Austin of Barwon Park in 1845. She went on to become arguably one of Winchelsea's most important historical figures. An entire article will be dedicated to her in future weeks.

Henry Hopkins' son Arthur commissioned the Gothic style 20 room bluestone homestead in 1875. It was designed by architects Terry and Oakden. The basalt bluestone was quarried on the property. The circular driveway in front of the house probably dates from 1854. Hopkins St Winchelsea was named after this Hopkins family as a founding family of the Township of Winchelsea.

Backing artists and bringing new creative projects to life

Victorian State Government

The Government is backing local artists and creative workers in the state's \$41 billion creative industries sector. More than \$1.5 million in grants will support 115 diverse projects spanning design, dance, literature, film, fashion, visual arts and music, which will create more than 1,000 job opportunities.

The Creative Projects Fund supports Victorian artists, creative collectives and small businesses to bring their projects to life. Grants back new creative work, projects that drive innovation, professional development and career-making opportunities, and initiatives to reach new audiences and markets. One third of the recipients are based in regional or outer-metropolitan areas.

To increase equity of access and ensure projects reflect the diversity of Victorians, the latest round of the program included streams for First Peoples and Deaf and Disabled creatives

Funded projects include an innovative large-scale installation that will transform a Library into an interactive storytelling hub; an app

sharing First Peoples stories and soundscapes through a walking tour of Shepparton; and storytelling and digital media workshops to equip young people with skills for creative careers.

A Diversity Writers Room will develop the skills of emerging screenwriters from underrepresented cultural backgrounds, while a new residency program will provide a platform for artists and writers with complex mental health conditions.

Projects will drive innovation and sustainability in retail, fashion and textiles. From the development of a modular, relocatable retail fit-out prototype to a fashion swatch library that combines tactile samples with QR-coded digital resources.

Victoria's creative economy provides employment to more than 327,000 workers – from performers and producers to designers, editors, technicians and beyond. Behind every worker is a family – and that's why the government is backing the people who power our creative state.



Café La Hoot

have you tried
'owl' coffee?

1 willis st cafelahoot@gmail.com 0407 528 999

SEEKING QUALIFIED SWIM INSTRUCTORS



**DECEMBER 1ST
to
DECEMBER 12TH
Term Four
2025**

Our school's Extensive
Swimming Program starts
in Term Four – December
2025 at the
Winchelsea Pool.
Please contact the school if
you have any questions or
wish to forward your
interest in the positions of
Swim Instructors in this
program.



**Winchelsea Pool
12 Barwon Terrace
Winchelsea**

Ph:5267 2134

Email: winchelsea.ps@education.vic.gov.au

The State government is offering grants to establish more battery drop off stations

Victorian State Government

The State Government is making it easier for households to safely dispose and recycle batteries with the expansion of battery collection points across the state.

Funding is available to local councils and registered charities to establish convenient battery drop off locations, supporting battery recovery rates and keeping batteries out of household bins. E-waste, one of the fastest growing waste streams in Australia, includes embedded batteries in vapes, e-scooters, shavers and toys, and poses an environmental and health and safety risk when not disposed of correctly.

Local councils and charities are invited to apply for grants of up to \$22,000 to support the purchase, installation and promotion of battery drop off units. The funded facilities will accept a wide range of battery types including loose household batteries, batteries from e-cigarettes, embedded batteries in small devices such as electric toothbrushes, and larger batteries weighing up to 60 kg.

With only a small quantity of lithium-ion battery waste currently being processed in Australia, two projects in Stawell and Campbellfield will play a crucial role in increasing Victoria's capacity to reuse valuable battery materials.

For further information and to apply please visit www.sustainability.vic.gov.au/ceif-hazardous-waste-round-4

This Week's Winchelsea Star

Editor - Cerrie Forgan
Designer - Susan Corby

Winchelsea Star

Your Weekly Community Newspaper

Since 1977

**Next Production Coffee
Meeting @ Sweet Thyme
Saturday 30 July 2025 9-10am
Everyone Welcome!**

The Winchelsea Star

**Send your stories and photos
news@winchelseastar.org.au**

LOCAL NEWS and ARTICLES WELCOME

Include name and address of the sender
Email news@winchelseastar.org.au OR
Leave hard copy at IGA Supermarket

DEADLINE 5pm Fridays

4pm Sundays - hard copy articles left at IGA
6pm Sundays - sports results and weekend events

EDITOR 5273 0295

Leave a message

ADVERTISING

advertising@winchelseastar.org.au 5273 0294

FREE DIGITAL SUBSCRIPTION

www.winchelseastar.org.au

JOIN US ON FACEBOOK

facebook.com/TheWinchelseaStar

production

Editors: Cerrie Forgan, Yvonne Stevens, Judy Cameron
Advertising: Sasha Gauntlett, Neil McInnes
Design: Susan Corby, Tony Phelps
Printed by: Winchelsea Community House
Website by: Winch Websites

committee

President: president@winchelseastar.org.au
Neil McInnes
Treasurer: treasurer@winchelseastar.org.au
Cathy Cheadle
Secretary: secretary@winchelseastar.org.au
Tony Phelps
Members: Mick O'Mara, Linda Carter, Susan Corby,
Sasha Gauntlett, Judy Cameron,
Yvonne Stevens, Cerrie Forgan



© Winchelsea Star Org. Inc. All rights reserved
Winchelsea Star Organisation Inc.

Reg. No. A0053999F ABN 75 941 529 279
winchelseastar.org.au PO Box 5 Winchelsea 3241

Views expressed are not necessarily those of the
Winchelsea Star or Committee. The Winchelsea Star
reserves the right to edit or not publish any article.



Winchelsea Star COMMUNITY NOTICEBOARD

email editor@winchelseastar.org.au or leave at Winchelsea IGA



Help is available
Speak with someone today
Available 24 hours

13 11 14

DEFIBRILLATOR MISSING

The newly installed Defibrillator outside the Netball change rooms has been missing for some weeks. If it could be replaced asap that would be great, no questions asked. These Defibrillators save lives

WINCHELSEA OP SHOP

BOOK SALE

The Winchelsea Op Shop will be having their \$5 bag of books again ready for the School Holidays.

Sale will commence on Friday, July 4th, through until end of the holidays.

We have lots of good books so do not miss out on your winter reading.

DVD and CD SALE

5 items for \$2.

This can include a mix of DVD's and CDs for total price of \$2
Sale ends 31/7/2025.

Thanks to the community for your ongoing support to the shop once again



BRIDGE

Social Bridge is played at
Senior Citizens Centre
36 Harding Street Winchelsea
New players always welcome
Elaine Atkinson 0458 009 616

SHOPPING AND A CUPPA AT WAURN PONDS SHOPPING CENTRE

for Winchelsea Seniors Card Holders

Wednesdays

30 July

13 August

27 August

Contact Jill on 0427 633 277 to book

Pick up from your home between 9am and 10am, leave Waurm Ponds at 1.30pm and **drop off at your home.** You will get a reminder call.

12-seater Community bus so spots are limited!

Cost: Gold Coin Donation

**Must have a Seniors Card to be eligible.*

CUBS AND JOEYS

For information, or to get involved, contact Marie McPadden 0409330147 or mcpadden630@bigpond.com

WINCHELSEA TENNIS CLUB JUNIOR COACHING

Mondays from 3.30pm
with experienced Nicole Mullen, \$10

WINCHELSEA MEN'S SHED

For the Community

NEW MEMBERS WELCOME

Every Wednesday from 9.30am
51 Hesse Street, Winchelsea

KINDLING/OFFCUTS \$7.00 bag
Pickup Wednesdays 9.30-2.30
For delivery, call Bill 0438 083 373

NESTING BOXES Birds/animals

NEED A JOB DONE?

Woodworking, Furniture Repairs
Call in Wednesdays to order

Ray Atkinson (Co-ordinator)
0407839139
winchmenshed@gmail.com

FOR SALE - PINE CONES

WINCHELSEA LIONS CLUB

has full bags of pine cones
\$5 per bag.

Raymond 0406 371 239.

RUNNING GROUP

Winchelsea has a small run group. Its more of a social run, jog and chat. We wait for slower runners and walk when one of us needs a rest.

The aim is 10k with the option of 8 or 5k it's up to you.

To finish, a coffee at La Hoot.

Sunday mornings 8am at La Hoot.

WINCHELSEA LIONS CLUB

Recycled compressed paper logs

Great for wood burners, fires and fire pits. Burn for over an hour, ash great for gardens, no chainsaw needed.

Pack of 4 logs \$5, small rolls \$2

Contact Alan 0476 47522

WINCHELSEA PICKLEBALL

Pickleball is back at Winchelsea! The Tennis Club are running this every Wednesday at 7:00PM at the Winchelsea Leisure Time Centre! Only \$5 a person

All equipment supplied

Wear suitable footwear

Lesley Mathison 0438 672 197

WINCHELSEA GIRL GUIDES

Welcomes girls 6-15 yrs

Mondays, 4.30pm-6pm during school term
St John's Catholic Church Winchelsea
Guiding provides fun, friendship, and adventure. Developing teamwork, and leadership skills, whilst girls achieve goals, improve communities and grow in confidence.

3 FREE sessions to come along and try.

Yvonne Orchard ph 0448 672 630
or Lily Dell Rennie ph 0428 936 441

Strongest home sales for 3 years

HIA

"Sales of new detached homes increased by 18.8% in the three months to June 2025 compared to the previous three months," stated Chief Economist, Tim Reardon.

The HIA New Home Sales report is a monthly survey of the largest volume home builders in the five largest states and is a leading indicator of future detached home construction.

"This is the strongest performance for new home sales in almost three years," added Mr Reardon. The rise in sales reflects the impact of two cuts to the cash rate this year and EOFY incentives that have been on offer given the competitive nature of the home building market.

"The increase in new home sales is supported by low levels of unemployment, recovering real wages and elevated housing demand from ongoing population growth.

"Despite expected further cuts to the cash rate and a recovery in market confidence, there remains a shortage of housing in

Australia due to the tax and regulatory barriers to increasing supply," concluded Mr Reardon.

All states had increased new home sales in the June quarter 2025 compared to the previous quarter led by Victoria (+27.7%).



Lack of housing leaves 20% of victim-survivors without crisis accommodation

Council to Homeless Persons

Years of underinvestment in social housing and a lack of resources in Victoria are fueling a crisis in emergency accommodation for women and children leaving violence.

The Bridging the Gap between Homelessness and Family Violence Services report released on Tuesday has found a staggering 20% of women and children leaving family violence are "ping-ponged" between family-violence and homelessness services, only to end up with no crisis bed at all. "Imagine leaving violence with your children, knocking on two different doors, and still sleeping in your car that night," Council to Homeless Persons CEO Deborah Di Natale said.

The report prepared by Council to Homeless Persons and Safe and Equal has found the "bounce-back" effect is devastating for survivors and demoralising for already overstretched frontline workers. "A lack of social housing driven by years of underinvestment is creating a "bottleneck" in crisis accommodation, and that can be a matter of life and death," Deborah Di Natale said.

Domestic and family violence is the single biggest driver of homelessness in Victoria, with the report showing more than half of all women, young people and children who visited a specialist homelessness service reported they were also experiencing family violence in 2022-23.

"A woman is killed every three weeks in a domestic and family violence-related incident in Victoria. Women and children are disproportionately affected by homelessness brought on by threat to their physical and psychological safety. We must improve our systems to protect them," Deborah Di Natale said.

The report recommends the Government builds around 8,000 new social homes each year for the next decade, and boost funding for Specialist Homelessness Services and Family Violence Services to fund more frontline staff.

"Access to safe and affordable housing is absolutely critical - without it, it is nearly impossible for a victim-survivor to safely leave a violent relationship and rebuild their life," Safe and Equal CEO Tania Farha said. "Devastatingly, when the systems that

are meant to help are stretched to breaking point, the options for victim-survivors become extremely limited," Tania Farha said.

Other recommendations include doubling the capacity of family violence refuges to reduce a reliance on motels for emergency accommodation, as well as boosting investment in Safe At Home responses which take the burden off the victim-survivor by finding alternative accommodation for the person accused of violence.

Key findings

- 1 in 5 victim-survivors receives two referrals but zero accommodation.
- A lack of social housing driven by years of underinvestment is creating a "bottleneck" effect in crisis accommodation.
- Overloaded staff and rigid eligibility rules exacerbate the problem.
- Motels and caravan parks often feel less safe than returning home.

Key recommendations

- Commit to an annual pipeline of around 8,000 social homes each year for 10 years
- Boost funding to Specialist Homelessness Services and Family Violence services for additional frontline staff.
- Double the capacity of family violence refuges in Victoria to reduce reliance on hotels.
- Increase funding for Safe At Home responses, which allow victim-survivors to remain in their homes, by finding alternative housing for the person accused of violence.
- Lift income supports above the poverty line to increase housing retention.

Fast facts:

- 102,000 people sought assistance from homelessness services in Victoria in 2023/24 (up 4% from the previous year)
- 60,000 of them (58%) were women
- 13,000 were working Victorians (up 23% in 5 years)
- One third of people seeking homelessness assistance in Australia are in Victoria, but we have the lowest proportion of social housing in the country (2.9%)

A guide to the complexities of Windfall Gains Tax

Growing Winchelsea

Windfall Gains Tax - Important information for landowners

There was silence amongst the audience at Monday's Community Forum when Megan Gidley & Sheree Coleman, representatives of the State Revenue Office spoke in detail about the Windfall Gains Tax introduced on 1 July 2023 in Victoria.

Landowners can accrue significant windfall gains when the value of their land increases due to the actions of government. These landholders may pay a tax on their windfall gains.

"It is vital that landowners are aware of the tax implications they may have following rezoning of land by Surf Coast Shire. There will be increasing demand for more residential land to accommodate the future housing needs of our growing population," said John Tebbutt, President of Growing Winchelsea.

A number of examples were given to explain the financial impact on landowners immediately following rezoning where the value of land may increase. One such example: If a rezoning of land

results in a taxable value uplift of \$300,000, windfall gains tax of \$125,000 $((\$300,000 - \$100,000) \times 62.5\%)$ is payable.

Once a notice of assessment is sent there is only 30 days given to pay and any objections to the assessment must be made within 2 months. Interest accrues on late or deferred payments.

"Many landowners are asset rich but cash poor, therefore it is important to have discussions now with your accountant or lawyer to consider financial strategies if you feel any land you own may be rezoned in the short to medium term," continues John.

"Growing Winchelsea has been provided with an information packet that has the links and more information about windfall gains tax. We are happy to provide access to the information packet, just contact Elaine Atkinson on mobile 0458009616 or email secretary@growingwinchelsea.com. Likewise if you have any further questions about windfall gains tax, please let us know and we can put you in contact with Megan," concludes John.

Here is link to the State Revenue Office website - <https://www.sro.vic.gov.au/windfall-gains-tax>



John Tebbutt Growing Winchelsea
& Megan Gidley State Revenue Office



Sheree Coleman,
Customer Education Consultant
State Revenue Office



Megan Gidley
Principal Customer Education Consultant
State Revenue Office

Social and affordable homes for vulnerable Australians

Victorian State Government

Federal and State Governments are delivering hundreds of new social and affordable homes through the latest round of the Housing Australia Future Fund (HAFF).

In Rosanna 45 homes are under construction as part the first round of HAFF, including 30 social homes and 15 affordable homes. These new one, two and three-bedroom homes will be available for Victorians escaping family violence, older women, frontline workers, and First Nations Victorians.

The five-storey development is on land available following the removal of the level crossing at Lower Plenty Road and construction of the elevated Rosanna Station.

The second HAFF round will include the redevelopment of ageing estates in Williamstown, Clifton Hill, Ascot Vale and Ashburton – more than 400 homes. It will also include five low-rise projects in Bellfield, Albion, Braybrook, Ashwood and Glenroy – more than 100 homes.

In total, these developments will deliver 506 social homes for Victorians who need it most – including women escaping family violence, older Victorians and Victorians who are sleeping rough.

Housing for the needy

Victorian State Government

The Government is delivering more than 1,000 new social homes in partnership with community housing providers. In St Albans 90 new social homes are underway as part of 1,000 new homes through the State Government's Social Housing Growth Fund.

The St Albans development, managed by Evolve Housing, will provide one and two-bedroom homes minutes from Keilor Plains Station and close to local schools. These homes form part of the 1,043 new social homes that will be built right across Victoria, including 169 homes in Greater Geelong and 65 homes in Ballarat.

The Fund provides funding for not-for-profit community housing organisations to help build and operate social housing. All 1,043 of these homes will go to Victorians on the social housing register – including people escaping family violence, people sleeping rough, and First Nations Victorians.

This investment will also support more than 5,400 jobs across the state – supporting suppliers and construction workers as they help build homes for those who need them most. It complements the recent announcement by the Federal and State Governments to deliver 1,275 new homes in Victoria through the second round of the Housing Australia Future Fund.

Winchelsea Churches



Winchelsea Uniting Church

0475 777 301

uca.winchelsea@gmail.com

Hesse St, Winchelsea 3241

Services 9.30am Sundays

St John the Baptist Catholic Church

0404598558

Father Joseph Panackal

Harding St, Winchelsea 3241

Winchelsea @ 5pm Sat. July/26

Anakie – NO MASS

Meredith @ 9am Sun. July 27

Bannockburn @ 11am Sun. July. 20/27

St Thomas' Anglican Church

0477 672 042

Rev Barbara Colliver

stthomaswac@gmail.com

Barwon Tce, Winchelsea

Service 10am Sundays

Thought for the Week

"Hope springs eternal in the heart of a child of God.

Nothing is ever hopeless when your ways are committed to your Heavenly Father.

God's power is unlimited.
His goodness knows no measure.
His mercy knows no end."
Have a Blessed week.

John Bader
Christian Pastoral carer

Remembering Mike Tucker



Jenny Murray Jones, Alison Dean, Mike Tucker, Sue Fletcher.

A recent photo with fellow members of the Project Management Group for the Mud Hut Cob Wall installation Steering Committee

It is with deep sadness that we heard about the passing of Mike Tucker, a well-known and respected figure in the Winchelsea community. Mike passed away recently, leaving behind a legacy of dedication, leadership, and heartfelt commitment to the town.

Mike made a valuable and lasting contribution to *Growing Winchelsea* over many years. He worked tirelessly

as an advocate for positive growth and sustainable development, always championing the future of the town while honouring its unique heritage. His passion for community progress was evident in everything he did, from thoughtful planning discussions to hands-on involvement in local initiatives. His most recent battle was to support the community engagement planning for the installation of the cob wall at the Mud Hut. Mike played a key role in the reintroduction of the Planning and Infrastructure subcommittee for Growing Winchelsea understanding the importance of a strong voice in community planning.

As a familiar face and trusted voice in Winchelsea, Mike was more than just a community advocate—he was a neighbour, a friend, and a true local identity. His integrity, warmth, and dogged approach made a lasting impression on all who had the privilege of working with him.

Mike's efforts helped shape a stronger, more connected community, and his legacy will live on through the projects he supported and the people he inspired.

He will be deeply missed by all who knew him and we extend our sincerest condolences to his family.

Come and help our Birregurra friends celebrate the restoration of Christ Church

You will also hear the "Fanfare for Birregurra" performed for the first time.

Caroline Ellsmore, Rosalinde Hodson

Every community needs facilities and 154 years ago the first Anglican settlers in this district erected and worshipped God in the fine building that is Christ Church.

Over the years, and through changing times, there has always been a faithful and prayerful witness to our loving and provident Lord.

Now, with God's guiding hand, Christ Church has been restored to continue as a vital source of prayer and Christian action for Birregurra and beyond.

We hope you will join our celebration.

RSVP: anglicancolac@outlook.com

THE ANGLICAN PARISH OF COLAC
WARMLY INVITES YOU TO

FESTAL EVENSONG

TO CELEBRATE AND
GIVE THANKS FOR

THE RESTORATION OF
CHRIST CHURCH



AND TO HEAR FOR THE FIRST TIME
FANFARE FOR BIRREGURRA
COMPOSED BY EDWARD FAIRLIE

Sunday August 24th at 3pm

SLADEN STREET, BIRREGURRA

RSVP anglicancolac@outlook.com August 14th

ANGLICAN PARISH OF COLAC

Rector: 03 5231 3646 www.anglicancolac.org
Fr Jeremy Morgan anglicancolac@outlook.com www.facebook.com/ColacAnglican

Winchelsea community forum gives in principle support for the Riverside Amphitheatre

Elaine Atkinson, Secretary Growing Winchelsea

At Monday's community forum there was unanimous support to push forward with the Riverside Amphitheatre concept first mooted as a demonstration project in Growing Winchelsea 2015 - Winchelsea's 10 year strategic plan.

Charlie Earl, a local leader and retired Civil Contractor led the discussion by presenting three possible options, considering costing and ongoing maintenance while observing the natural contours and unique character of the river. His vision highlighted the advantages of its development as a community led initiative utilising materials that can be sourced locally.

Environmental considerations were put forward, in particular the need to consider the platypus habitat and minimising any impact the construction of a stage and walkway may make. A solution put forward was to move the stage 3 metres away from the river's edge and remove the proposed timber/ concrete walkway and fishing deck idea.

In addition the acoustics of the area should be investigated particularly in light of the vehicle traffic crossing the bridge. Damage caused by the river flooding at times was a consideration not only at the forum but in social media posts by the community in the lead up to the forum. Charlie indicated that an open structure combined with appropriate stepping such as rock retaining walls would minimise any damage.

"It is early days and we need to gather additional community input and support before progressing a Community Project Proposal with Surf Coast Shire that will include its feasibility, identify the scope of the project and other elements required to push forward," said John Tebbutt President of Growing Winchelsea.

"If anyone is interested in working with Growing Winchelsea, we are seeking volunteers to stand with a clip board outside IGA and other locations to gather further support, over the coming months. I encourage everyone to have a voice and express their views on this important project," concludes John.

Contact: Elaine Atkinson, Secretary Growing Winchelsea

Mobile 0458009616

Email secretary@growingwinchelsea.com



SCS staff with Alison Dean



Alison Dean and Charlie Earl



Charlie Earl



Adrian Schonfelder, SCS staff



Concept Drawings /Photos Riverside Amphitheatre

Antique Repairs

By **Doug Burns** est. 1976

- All Furniture
- French polishing
- Carving
- Veneering
- Wood Turning
- Porcelain



Unusual Requests Welcome

180 Barwon Terrace, Winchelsea

0428 672 704



Winchelsea Supermarket
Trading Hours
Monday to Saturday
8.30am to 7.30pm
Sunday
10am to 7pm
Ph: 5267 2676
29 Main St, Winchelsea



mainly music
est. 1990

Fun, Interactive music sessions for
pre-school children (0-4 y.o.) and
parents/caregivers

When: Mondays from 10 to 11 am
(runs during school terms)

Where: St Thomas' Hall
25 Barwon Tce.

To Enquire ring: **0407838256**

Public Service

Councillor Catch-up: Winchelsea Roadshow and Lions Club changeover dinner

Tony Phelps, Winchelsea Ward Councillor

Last Friday saw a wonderful Winchelsea Road Show at the Shire Hall – running most of the day with a number of presentations, stalls, grazing food and lots of great conversations. Just a great collaboration between community groups, the Winchelsea Community Bank, and Surf Coast Shire. A special congratulations to Rose, the Shire's Age Friendly Officer, who put it all together into such a successful package.

Of course it takes many hands for an event like this to work. MCs were Jenny Mathison and Charlie Earl (the latter's voice particularly needed to overcome the chatting hubbub in the breaks to get everyone back to their chairs!). Charlie started the day with a very moving outline of his drive for passion for mental health support, a theme that was repeated through the day. Hesse Hospital, Rural Financial Counselling Service, Council Of The Aged (COTA) all provide helpful services in this regard, amongst others.

The delicious all-day grazing food was provided by Feed Me Surfcoast, whose volunteers also beaver away in Torquay providing 5,000 free meals a week to those that need them. They have a mission to stop food going to waste, by offering it to anyone no questions asked, optional donation welcome but not at all required. Pop in and see them in Cylinders Drive (open hours on their Facebook page).

An event like this underscores how important volunteers and their organisations are to community. Winchelsea Mens Shed had a stall, both them and Moriac Mens Shed open to new members, providing places to go for social connection while doing something useful. Winch House provided the PA system (inherited from the Winchelsea Festival) and lots of people helped with setup and packdown. A good day all round.



Roadshow during Panel Q&A



Lions Changeover
(L-R, John officiating, President Graham, Secretary Rob, Treasurer John, Vice-President Raymond, Membership Robbie).

Speaking of volunteers, I also had the privilege of attending the Winchelsea Lions Club changeover dinner. Congratulations to President Graham, Vice-President Raymond, Treasurer John, Secretary Rob, and Membership Robbie. The Lions Club does so much good around the community, much of it unseen and unpromoted. Local clubs like this are a huge part of what makes a community 'livable', with benefits to the members and to all those they help. I wish this year's leadership team all the best for the coming year. There are so many opportunities to volunteer whatever your interest, and it is so good for you, so if you can fit it in, I highly recommend getting involved.

State Funeral for The Honourable Brian James Dixon

Victorian State Government

The Honourable Brian James Dixon lived a rich life defined by public service, leadership, and a strong passion for sport and community.

A State Funeral Service to celebrate the life of The Honourable Brian James Dixon will be held at 10.30 am on Friday, 25 July 2025 at St Patrick's Cathedral, Melbourne.

Mr Dixon served as the Liberal Member for St Kilda in the Victorian Legislative Assembly from 1964 to 1982 and during this time held several key ministerial roles in the Hamer Government, including Minister for Youth, Sport and Recreation, Social Welfare, Housing, and Employment and Training.

As a passionate advocate for health, wellbeing, and the community, Mr Dixon led some of Victoria's most impactful reforms including launching the Life. Be in it. campaign in the 1970's, inspiring millions to embrace physical activity and healthier living, driving a memorable public health message - and a catchy jingle.



As Chair of the Road Safety Committee, he played a key role in making Victoria the first jurisdiction in the world to mandate seatbelt use, which was a life-saving measure that dramatically reduced road fatalities and became a global safety benchmark.

Alongside politics, Mr Dixon also had a distinguished sporting career, playing 252 games for the Melbourne Football Club and winning five premierships. Off the field, he remained a lifelong advocate for community sport both in Australia and internationally.

The State Funeral Service will be open to the public, and for those unable to attend, the Service will be live streamed.

At the request of the Dixon family and in lieu of flowers, donations may be made to FightMND. To donate, visit fightmnd.org.au/donate.

Further details about how to attend or view the live stream will be shared in due course, with the most up to date information available at vic.gov.au/BrianDixon.



Family Healthcare - Naturally through Chiropractic

Get out of pain and back to life.
Build a foundation for lifelong wellness.
Perform at your absolute best.

f i www.onebodychiropractic.com.au
03 52672240 Shop 4/21 Hesse St Winchelsea

Here for your Vitality...



MET BUILDING & CONSTRUCTION

NEW HOMES | EXTENSIONS | RENOVATIONS

Ph: 0409 433 687

REGISTERED
Building Practitioner



* Farm & Machinery Sheds * Residential Sheds
* Garages & Carports * Patios

Offering a diverse range of shed kits including
C section, RHS, and U Beam, ensuring you have the options
to create your ideal structure.

We service Colac, Ballarat, Geelong and surrounding areas.
Check us out on Facebook or visit our website

huttonbuild.com.au

0488 031 332

sales@huttonbuild.com.au



The skills you already
have, can help you
make a positive impact
as a Prison Officer.

Discover a rewarding and secure career
as a Prison Officer. Apply now and receive
an \$8,000 sign on bonus.*



Corrections
Victoria

Hiring now

*Conditions apply.



Authorised by the Victorian Government,
1 Treasury Place, Melbourne



What's on Weekly

MONDAY-FRIDAY

WINCHELSEA COMMUNITY HOUSE

9am-2pm, 28 Hesse St, Winchelsea
(03) 5267 2028

WINCHELSEA TOY LIBRARY

9am-2pm (03) 5267 2028
Winch Community House,
28 Hesse St, Winchelsea

MONDAY-SATURDAY

WINCHELSEA HEALTH CLUB

Accessible - 24 hours
Eastern Reserve, 70 Hopkins St
5267 2336.

MONDAY

CO-WORKING & STUDYING SPACE

Mon and Thurs 9am-2pm \$10
Winchelsea Community House
28 Hesse St, Winchelsea

MAINLY MUSIC

Interactive Music 0-4yrs
10-11am (school terms)
St Thomas' 25 Barwon Tce
0407838256

WINCHELSEA GIRL GUIDES

4.30pm-6pm (School term)
St John's, Mercer /Harding St
Yvonne Orchard 0448 672 630
Lily Dell Rennie 0428 936 441



1ST MODDA/1ST WINCHELSEA SCOUTS

Cubs: 6:30-8pm (School term)
Modewarre Hall, Cape Otway Rd
Marie McPadden 0409 330147

VINYASA YOGA

7pm \$25
Winchelsea Shire Hall,
28 Hesse St, Winchelsea

WINCHELSEA CRICKET CLUB

AGM
Monday 4 August
Members' Room, Eastern Reserve

FUTURE EVENTS 4 WINCHELSEA WINCHELSEA FORUM

Monday, 11 August 2025 at 7.00 pm
The Hub Eastern Reserve, Winchelsea

TUESDAY



Senior Citizens Centre,
36 Harding St, Winchelsea
Elaine Atkinson 0458 009 616



1ST MODDA/ 1ST WINCHELSEA SCOUTS

Joeys: 5-6pm (School term)
Scouts: 6:30-8:30pm (School term)
Modewarre Hall, Cape Otway Rd
Marie McPadden 0409 330147

WEDNESDAY

WINCH WALKERS

9:30-10.30am
Mud Hut (Opposite La Hoot Cafe)
Barwon Terrace, Winchelsea
ralexander@hesse.vic.gov.au

WINCHELSEA ZUMBA DANCE

Combined Zumba Fitness and Gold class.
6:30-7:30pm @The Globe Theatre.
Simone Dunmore: 0468 375 036
zumbawithsimone09@gmail.com

Winchelsea Community Market

First Sunday on the Month (except November)



Shire Hall
9am to 1pm

Upcoming Dates:

July 6th	Nov 9th
August 3rd	(2nd Sunday)
Sept 7th	Dec 7th
Oct 5th	Jan 4th
	Feb 1st

Food, Produce, Coffee, Plants, Crafts
Homewares, Candles, Bags, Skincare
Jewellery, Soap + Baby Goods

Stallholders - Contact via Growing Winchelsea Inc Website
(Scroll Down to Market)



Winchelsea
Community
Foodbank

Fridays, 12 - 2PM
30-32 Hesse Street Winchelsea

For more info, contact Tess
healthpromotion@hesse.vic.gov.au
0417 848 292



All welcome
No eligibility requirements



Join a Winchelsea Community Kitchen



Learn

Cooking skills, budgeting and recipe's

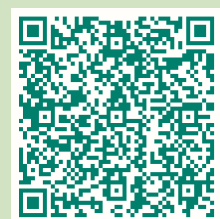
Cook

With a small group on a regular basis

Share

A delicious meal cooked together

Scan the QR code to sign up



OR Contact Tess:
healthpromotion@hesse.vic.gov.au
0417 848 292



JULY/AUGUST

What's On

This is a recurring calendar. Please confirm details with the organiser/venue if you'd like to attend.

To add an event to the calendar, please email news@winchelseastar.org.au

MAT PILATES

7pm \$25
Winchelsea Shire Hall,
28 Hesse St, Winchelsea

WINCHELSEA MEN'S SHED

9.30am 51 Hesse Street, Winchelsea
Ray Atkinson 0407839139
winchmenshed@gmail.com

SENIOR CITIZENS CENTRE

Wednesdays 1- 3.00 pm
36 Harding St, Winchelsea
Jean Shinnars 52672263, 0427672263
jeanshinnars@gmail.com

MOTHER GOOSE SONG & RHYME

2pm (School term) FREE
Winchelsea Community House,
28 Hesse St, Winchelsea

WINCHELSEA HISTORICAL SOCIETY

Wednesday 1-4:pm, Friday 10am-3pm
Hesse St, Winchelsea
www.facebook.com/

MEL'S DANCE CENTRAL

Wed afternoons/evenings
Pre-school - teens
Winch Senior Citizens Club
www.melsdancecentral.com.au

CWA WINCHELSEA

7-8.30pm 2nd Wed monthly
Senior Citizens, Harding St
winchelsea.cwa@gmail.com



SES WINCHELSEA

7.30pm 132500
323 Mousley Drive,
Winchelsea



THURSDAY

CHAT WITH YOUR COUNCILLOR TONY PHELPS

10am-12pm First Thursday of month
Winchelsea Shire Hall
28 Hesse St, Winchelsea

COWORKING & STUDYING SPACE

Mon and Thurs 9am-2pm \$10
Winchelsea Community House,
28 Hesse St, Winchelsea

WINCHELSEA PLAYGROUP

10am-12pm (School term) \$5
St Thomas Hall, 27 Barwon Tce
winchelseaplaygroup@gmail.com

WINCHELSEA PICKLEBALL

10-11.30am
Leisure Time Centre, Gosney St
Lesley Mathison 0438 672 197

WINCHELSEA

KNITTING GROUP

10.30am-12pm FREE
Winchelsea Community House,
28 Hesse St, Winchelsea

WINCHELSEA COMMUNITY FOODBANK

12-2pm 30 Hesse St, Winchelsea
healthpromotion@hesse.vic.gov.au
0417 848 292

WINCHELSEA MOVIE CLUB

7.30 (3rd Thurs each month)
Globe Theatre, Main St, Winchelsea
growingwinchelsea.com/project/winchelsea-movie-club/

FRIDAY

TAI CHI

9am-10am \$10
Winchelsea Community House,
28 Hesse St, Winchelsea



WINCHELSEA COMMUNITY MARKET

9-1pm, 1st Sunday monthly (except Nov)
Shire Hall car park, Main St
growingwinchelsea.com/project/winchelsea-community-market/

Chat with your Councillor

Tony Phelps

1st Thursday of the month
10am-12pm
Winchelsea Shire Hall
co-working/study space


We'd love to see you!

WINCHELSEA PLAYGROUP

Each Thursday during school terms.
Come along between 10AM - 12PM.
Check out our Facebook Page for more information about the happenings of each session.
Playgroup Leader - Danni Menzies
Email: winchelseaplaygroup@gmail.com
St. Thomas's Hall,
27-29 Barwon Terrace,
Winchelsea VIC 3241

\$5 PER FAMILY
INCLUDES MORNING TEA & HOT DRINKS FOR CAREGIVERS

Scan to be part of our Facebook Group



mainly music est. 1990

Fun, Interactive music sessions for pre-school children (0-4 y.o.) and parents/caregivers

When: Mondays from 10 to 11 am
(runs during school terms)

Where: St Thomas' Hall
25 Barwon Tce.

To Enquire ring: 0407838256



What's on Weekly

PHONICS WITH ROBOT REG

10.30am (1-3 yrs) 11.30am (3-5 yrs)
(School terms)
www.robotreg.com.au/pages/shae

CHATTY CAFÉ

10.30am-12.30pm
Donation
Winchelsea Shire Hall,
28 Hesse St, Winchelsea

NATIVE FLOWER WORKSHOPS

Fri 25 OR Sun 27 July 10.30am-1.30pm
Barrabool Hills Lavender \$120 pp
112 Monahans Rd, Gnarwarre
Includes materials, equipment, flowers,
country style lunch, 3 hour workshop
Carrie 0421 464 209

WINCHELSEA HISTORICAL SOCIETY

Friday 10am-3pm
Hesse St, Winchelsea
www.facebook.com/

WINCHELSEA SENIOR CITIZENS

Fridays 1.00 pm - 3.00 pm
36 Harding Street, Winchelsea
Jean Shinnars 52672263, 0427672263
jeanshinnars@gmail.com



WINCHELSEA RSL

7.30 15 August,
1.30 19 Sept, 17 Oct,
7.30 21 Nov, 12.00 19 Dec
Winchelsea Men's Shed,
Hesse St, Winchelsea
David Loone 0488 165 109

GEELONG REGIONAL LIBRARY (MOBILE) 2-5pm

Old Shire Hall, 28 Hesse Street
0408384331 (During scheduled stops)

SATURDAY



PARKRUN

8am Trebeck Reserve
Sussex St, Winchelsea
www.parkrun.com.au/trebeckreserve/

FLOW YOGA

8am, \$25
Winchelsea Shire Hall,
28 Hesse St, Winchelsea

WINCHELSEA LAND AND RIVERCARE MONTHLY WORKING BEE

Saturday August 2
9am End of Dwyer St.
Rod Stone 0428 549318
Stewart Mathison
0428 672054



WINCHELSEA STAR PRODUCTION/COFFEE MEETING

9-10am (Last Sat monthly)
La Hoot Cafe, Main Street
www.winchelseastar.org.au
5273 0295

WINCHELSEA CROCHET GROUP

1.30pm 2nd Saturday each month \$5
Winchelsea Community House,
28 Hesse St, Winchelsea
reception@winchhouse.org.au

ST JOHN THE BAPTIST CATHOLIC CHURCH

Mass 5pm each week (Winter season)
Harding St, Winchelsea 0404598558

WINCHELSEA COMMUNITY DINNER

6.30pm (Last Sat each month)
Hall, Harding St Winchelsea
Bring plate & gold coin donation if you can

SUNDAY

RUNNING GROUP

8am Meet at La Hoot

CHEESE MAKING WORKSHOP

24 August Shire Hall
shirehall@winchhouse.org.au
52672028

WINCHELSEA UNITING CHURCH

Service 9.30am each week
Hesse St, Winchelsea
0475 777 301
uca.winchelsea@gmail.com

Hesse Rural Health provide face-to-face, telehealth, and home visit options to support individuals dealing with a range of issues, offering a confidential space where you can explore your feelings and concerns



FREE COUNSELLING SERVICES

Relationships

Anxiety

Stress

Life transitions

Grief and Loss

Depression

Anger

Caring for others

Uncertainty

Family Violence

Parenting

Life decisions

Call our phone number listed below; or email jdevonport@hesse.vic.gov.au to make an appointment at Beeac, Rokewood, Winchelsea, Bannockburn, or in your own home.

For immediate crisis support:

- Lifeline: 13 11 14
- Suicide Call Back Service: 1300 659 467
- Family Violence Support: 1800 737 732

Contact Us



Phone Number:
(03) 5267 1200



Website:
hesseruralhealth.com.au



Sam Worpel / Worpel Custom Furniture

Sam Worpel's handcrafted furniture is lovingly made from reclaimed timbers

Sam Worpel

I am born and raised in Moriac on the surfcoast and I make timber furniture from recycled and reclaimed materials.

I have been trading for 11 years, having started the business when I returned from living in Canada for 2 years. I have always loved woodwork and making things and loved the challenge and flexibility that comes from being self employed. I didn't really have any idea what was involved in starting a small business from scratch so each step has been a bit of a learning curve.

I finished a school based apprenticeship in year 11 at high school with a furniture maker in Moolap which got me super interested so then I completed my apprenticeship in Cert 3 Cabinet making and joinery. I managed to get apprentice of the year in my final year and got an early release.

As I started things small in a shed on my parents property things have been pretty smooth over the years with little challenges but now that I am upscaling it is getting interesting. Still enjoyable and loving the potential of a bigger space though!

Because I have been travelling on and off over the last 10 years chasing the snow and ski seasons around the world, one challenge would be getting things off the ground and starting fresh each time I return home. But the work always seems to be there which is nice.

0439013145

worpelsam@yahoo.com.au



As it is very early days I am keeping things small so it's a one man show operation at the moment. Gets very busy and anyone that stops by the shed usually ends up with a broom in hand.

A typical day in my business involves all sorts of things from an office day sorting quotes and plans and orders to being on the road picking up supplies and measuring jobs. My favourite days are when I get to spend them in the shed really getting into creating something from recycled timber. I love that every project is unique and every day is different, keeps things interesting.

The best thing about Winchelsea is the location, so close to the Otways and the coast but still a nice and quiet country town. There isn't much I would change about Winchelsea, Having grown up down the road in Moriac. I love that this area still has a bit of its charm. This has always been home for me.

Native Flower Workshops

Carrie Vanderpol

Barrabool Hills Lavender in Gnarwarre are running some flower design workshops over Winter, while our lavender are sleeping.

Why lavender? Well with a love for all things purple, the beauty of lavender fields in France and the calming affects of lavender, we chose to plant some test varieties of lavender to see what thrived best in our sandy well draining soil on the side of Mt Moriac

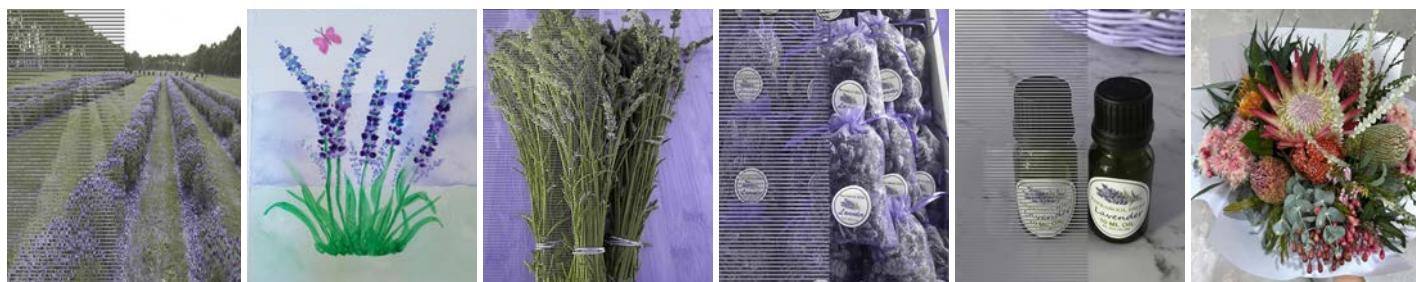
Our two most successful types of lavender were French Avonview and English Lavender. Our products include essential oil and hydrosol lavender water through distillation and cut bunches, lavender bags and confetti petals sold through Winchelsea Wholefoods.

Now three years later we have close to a 1000 plants in our fully fenced lavender field through a romantic entrance, with an amazing display from September to January. When the flowers are out, we open for private photography sessions or for private hour tour for \$10 per person. We can imagine our lavender field being used for a romantic ceremony location with stunning countryside photography.

Why flower workshops? "Well I love all flowers and grow many roses and flowering natives of my own. I also enjoy attending workshops recently learning to build a possum box with Barrabool Hills Landcare and attending art classes with Moriac Womens Shed. I thought it is such a wonderful social way to catch up with friends or gift a hardworking family member or share as a mother-daughter experience. With my own greenery available to forage I thought why not share our beautiful views and hold workshops ourselves. I then set out to recruit Anna Loughlan to teach and Haidin from Gnarwarre Flowers to provide local flowers" says Carrie Vanderpol co-owner of Barrabool Hills Lavender.

These first two workshops are filling up fast on Friday 25th July OR Sunday 27th July 10.30 am – 1.30 pm. For just \$120 per person such great value with a three hour workshop, a country style lunch and refreshments provided and you take home your glorious native bouquet. Call Carrie to book Ph: 0421 464 209. Facebook <https://www.facebook.com/100063708842375>

Attached are a few photos of lavender field in flower, trimming lavender leaving 2-3 cm of growth and some products. Also a recent water colour from my art class.



SERVICES & ACTIVITIES IN WINCHELSEA

VLINE TRAIN SERVICES

TO MELBOURNE:

Mon - Fri 6.21(coach) 07.55, 11.10, 14.04, 16.58, 19.21
Sat - Sun 9:34, 14.04, 16.58 19.18

TO WARRNAMBOOL:

Mon - Fri 8.58, 11.51, 14.46, 17.28 (coach), 18.43, 20.53
Sat - Sun 8:48, 11.41, 14.46, 20.38



COUNTRY WOMEN'S ASSOCIATION

7pm second Wednesday of month
Winchelsea Senior Citizens' Hall

Join us. *A role for everyone*



Nationally accredited training to help our community.
Pop in to meet your crew **Wednesdays 7:30pm**

Winchelsea Unit 325 Mousley Drive **132 500**

Winchelsea and District COMBINED PROBUS CLUB



Senior Citizens Rooms,
Harding St, Winchelsea.
New members always welcome.
Enquiries Lorraine 0417 467 927



SOCIAL BRIDGE

Senior Citizens Centre
36 Harding Street Winchelsea
New players always welcome
Contact Elaine Atkinson 0458009616

WINCHELSEA TRANSFER STATION

55 Cressy Road, Winchelsea

Tuesday	2pm-4pm	Saturday	1.30-3.30pm
Thursday	2pm-4pm	Sunday	9.30-12.30pm



Closed on Christmas Day,
but open on other public holidays
that fall during their normal operating hours.
www.surfcoast.vic.gov.au/disposalsites



WINCHELSEA GIRL GUIDES

Our Unit meets at the Catholic Church Hall,
Harding St Winchelsea each Monday 4.30pm-6pm
All girls 5yrs- 15yrs Welcome!
Contact Yvonne Orchard 0448 672 630
or Lily Del Rennie Ph. 0428 936 441



1st Modda & 1st Winchelsea SCOUT GROUP

Joeys: Tuesdays of school term 5-6pm
Cubs: Mondays of school term 6:30-8pm
Scouts: Tuesdays of school term 6:30-8:30pm
All at Modewarre Hall, Cape Otway Rd
Venturers: Wed at Walton's Rd Venturer Den
Contact Marie McPadden 0409 330147

BUS TO THE HUB



For reservations on the weekly bus
to the Eastern Reserve Hub,
please phone 52671202.

SURF COAST MOBILE LIBRARY

Hesse St, Fridays, 2pm-5pm
Surf Coast Mobile Library
parked in Hesse Street (outside Shire Hall)
Fridays 2:00 and 5:00pm unless it is a Public Holiday.

WINCHELSEA TAXI

0429 672 888 or 5267 2888
Wheelchair accessible
10 seater bus available.

WINCHELSEA PLAYGROUP

Every second Thursday 10am-12pm
St Thomas Anglican Church Hall
cnr Barwon Tce and Hopkins St, Winchelsea
Contact: Danni Menzies 0432019944
winchelseaplaygroup@gmail.com
Facebook - Winchelsea Playgroup 2019
New families welcome

Rural Aid Rural Aid's 'Spirit of the Bush' photo competition returns to celebrate life on the land

Rural Aid

Rural Aid is proud to launch the 6th annual Spirit of the Bush Photo Competition, inviting Australians to share striking images that capture the strength, resilience, and beauty of life on the land.

Running from 14 July to 31 August 2025, the much-loved competition provides a powerful platform for rural and regional Australians to tell their stories through the lens, stories of rugged beauty, resilience and community spirit in the face of hardship.

This year's competition comes after another challenging season of natural disasters, with floods, fires, and droughts once again testing the resolve of the nation's rural heartland.

"Every year, we are humbled by the entries we receive, each photo is a tribute to the unwavering spirit of our farming families and communities," said Rural Aid CEO, John Warlters. "The Spirit of the Bush competition is more than a showcase of talent. It's a reminder of the grit and determination that keeps rural Australia going, even through the toughest of times."



Entrants are invited to submit a high-resolution, landscape photograph that represents the true Spirit of the Bush. Photos can be submitted via Instagram or Facebook by tagging @ruralaid in the image and using the hashtag #SOTB2025. Entries can also be submitted, and the competition terms and conditions can be reviewed via our website at <https://www.ruralaid.org.au/spirit-of-the-bush/>.

A panel of judges will select ten winning images, each of which will receive a \$250 prepaid Visa card. Winners will be announced on 15 September 2025.

"This is a celebration of the people and places that make our regions special," Mr Warlters said. "Whether it's a hardworking farmer, a storm rolling across a paddock, or a quiet moment at sunset, every image has the power to connect Australians with the bush."

About Rural Aid:

Rural Aid is Australia's leading rural charity, providing critical support to farmers and regional communities since 2015. From mental health services to hay, water, and community resilience programs, Rural Aid stands with rural Australians through every season. Now marking 10 years of service, the charity continues to be a trusted lifeline in times of need. Learn more or support at ruralaid.org.au.

Resilient Farming Course

Upper Barwon Landcare Network

This course offers training in critical thinking and decision making relevant to participants' own farms.'



* RESILIENT FARMING * *Course*

What's the course about?

Collaborating with farmers to use critical thinking and decision making tools to effectively analyse which operational decisions will have the greatest leverage for improving profitability, productivity, ecology, drought resilience and carbon sequestration in their specific farm context.

Farmers have asked us:

What management practice will give me the greatest leverage for improving my farming system? Can I improve profitability and climate resilience? How does this reduce my farm carbon emissions and increase my carbon sequestration? How do I do it?

Is it fertilizer? Is it grazing management? Is it multispecies pastures? Is it soil biology? Is it something else? Which one should I focus on first for my specific farming system? And how can I implement the right practices for me?

Tailored specifically to the Corangamite region and course attendants' properties & fostering ongoing peer group learning with like minded farmers. .

Who: Cropping, grazing, viticulture, and horticulture farmers.

When: 3 days, August 25th, September 18th, day 3 TBC 2025

Location: On-farm TBC (Upper Barwon Landcare Network region)

Cost: \$100 per farm business
(Thanks to the support of CFOP this course is heavily subsidised)

SIGN ME UP!



Scan the QR code or click [here](#)



Jade Killoran
Healthy Farming Systems
B. Ag Science (Honors-First Class)



Tony Evans
Soil Health Consultant



Kristy Stewart
Farmer, Agricultural educator
B. Ag Science

With thanks:
The Victorian Carbon Farming Outreach Program is delivered with funding support from the Commonwealth of Australia through the Department of Climate Change, Energy, the Environment and Water under the National Carbon Farming Outreach Program. The Program is delivered through a partnership between Agriculture Victoria, 10 Catchment Management Authorities and Landcare Victoria and other bodies.



You may be asking, when will my dam fill?

DEECA

While good rain has fallen across much of the state, many dams are unlikely to fill unless they are in a thunderstorm. Ag Vic Land Management Officer Clem Sturmfels said the hot, dry summer and lack of autumn rainfall has left soil moisture levels well below average for this time of the year. 'Without an intense rainfall event, good runoff is unlikely until our soils become saturated.

'Even in an average year, plenty of rain is required to fill farm dams. The rate of runoff varies from 5% to 10% of annual rainfall, and the location, climate, soil type and ground cover all impact on this figure.' Using the rates above, a catchment area of 5 – 10 hectares is required to fill a small 1 Megalitre dam, for example.

'Contour banks can help to increase the catchment area of a dam by collecting water from the adjoining area.' They only need to be 200 - 300mm high and can be installed quickly and efficiently using a modern articulated grader. However, they should not be built on soils prone to tunnel erosion. A fall of about 1 in 200 is usually recommended for such banks,' Mr Sturmfels said. Permits or licences may be required before undertaking this type of work. Landholders are encouraged to contact their local council planning officer and water authority for guidance.

WINCHELSEA CONCRETING

• Driveways • Sheds • Decorative Concrete • Raft Slabs

Robert Murphy

☎ 0438 235 237

✉ winchelseaconcreting@outlook.com

DownRyte Excavations



- Excavations
- Drilling and Piling
- Rock Placement
- Tree and Stump Removal

Sean Hunwick

Mobile: 0409 447 288
Email: downryte@activ8.net.au

direct TEMPORARY FENCING

FOR HIRE - SUPPLIED & ERECTED - 7 DAYS
GEELONG - BELLARINE - COLAC - SURF COAST
PHONE CAM 0417 310 800

SOUTH-WEST — PAINTING — GROUP

Contact us:



0431 719 218



www.southwestpaintinggroup.com.au



matt@southwestpainting.com.au

We specialise in:

- New Homes
- Texture Feature Finishes
- New and Old Cabinetry Coatings
- Commercial Projects
- Maintenance Work
- Residential Work
- Wallpapering
- Pre-Sale Painting
- Timber Decking Rejuvenations

M & L DRAYTON

PLUMBING SERVICES

REG No 24356 C/A No C02594

- Domestic and Rural Plumbing
- Roofing
- Sewerage & Septic
- LPG & Natural Gas Connections
- Motorised Drain Cleaning
- Backhoe Hire

Phone Mark 5288 7244

PO BOX 98 WINCHELSEA 3241

Mobile 0428 520 142



DRIVEWAYS, CARPORTS, CROSSOVERS,
FOOTPATHS, SHED SLABS, STAIRS
HOUSE SLABS, EXPOSED, SEALING & MORE

CONTACT ALISTER NOW FOR A QUOTE

☎ 0411871950

✉ AMACONCRETING1@GMAIL.COM

parkrun 72



Saturday 19 July 2025

Trebeck Reserve, Winchelsea

Twenty four parkrunners walked or ran the course through Trebeck Reserve this week.

We had visitors from Werribee and Castlemaine.

Three people completed their very first parkrun.

Four people recorded their personal best time for Trebeck Reserve parkrun. Congratulations to Simon Clark, Ashley Hubbert, Jack Steel and Jess Driscoll.

This event was made possible by the following volunteers:

- Neil McInnes,
- Ann Morsby,
- Liz Bennett,
- David Woodall,
- Ann Jones,
- Kristen Czerkiewicz,
- Murray Bennett

Further details of this week's results can be found at trebeckreserveparkrun.com.au/ results or check out our Facebook page for more photos and further information.

Thanks to Café La Hoot for hosting our post event coffee / breakfast.



KINDLING

Winter is almost upon us
It's time to stock up on kindling
to keep that fire going

Large bags for only \$7

PICK UP or DELIVERY

Contact the Men's Shed

0407839139

or call in at 51 Hesse Street



WANT TO JOIN PROBUS?

Enjoy fellowship with
other members

Enjoy trips & outings

Listen to guest speakers



Contact Lorraine
0417 467 927



NATIVE FLOWER BOUQUET WORKSHOP

BARRABOOL HILLS LAVENDER
Gnarewarre

Friday 25 July OR Sunday 27 July
10.30am - 1.30pm

Includes materials, local flowers
and country lunch \$120pp

Carrie 0421 464 209

All About

Mowers & Chainsaws

Repairs to all makes and models of ride on mowers, domestic mowers, pumps, chainsaws, brushcutters and small engines.

Trading Hours: Mon - Fri 8am - 5pm Saturday 8am - 12 noon

5267 2266 Cnr Princes Hwy & Lennox St Winchelsea

www.allaboutmowers.com.au
accounts@allaboutmowers.com.au







TRENCHES & HOLES PTY LTD.



PHILLIP ROBERTSON

☎ 0427 672 945

WINCHELSEA

- General Earth Works
- Driveways
- Trencher
- Kanga Loader
- Grader
- Excavator Work (3.5 & 6.5 Tonne)
- Tip Truck
- Rock Breaker
- Post Holes & Shed Footings

A.B.N 74006896898

Winchelsea Star



STS ACCOUNTING GROUP

Your Taxation
&
Superannuation
Specialists.

Winchelsea

5267 2673

www.surftax.com.au

ven1g1064



WORPEL CUSTOM FURNITURE

- BESPOKE TIMBER FURNITURE
- TIMBER VANITIES
- BARNDOORS
- KITCHEN, BATHROOM & WARDROBE JOINERY
- REPAIRS & RESTORATION

0439013145

worpelsam@yahoo.com.au

25A Alsop Drive Winchelsea



MRP

Steelworx

Matthew Partridge
p 0418 672 334
e mrpsteelworx@yahoo.com.au

Welding Service

- Onsite welding
- Farm maintenance
- Farm machinery & equipment repairs
- Cattle & sheep yards
- Custom built trailers
- Supply & install gates

CONCRETER

- * DRIVEWAYS
- * FOOTPATHS
- * KERB & CHANNEL
- * GARAGES & SHED SLABS
- * STEPS
- * WHEELCHAIR RAMPS
- * VERANDAHS
- * PATIO AREAS
- * PLAIN OR COLOURED
CONCRETE
- * CONCRETE CUTTING
& REMOVAL

VINCE

0412 840 704

Boosting research into women's health

Victorian State Government

For decades, medical research has omitted women from studies – this inequality is contributing to a lack of attention into women's health issues.

Now the \$1.5 million Women's Health Research Catalyst Grants program is helping advance the understanding of how disease affects women. Minister for Health Mary-Anne Thomas has announced the 15 recipients who will share in grants ranging from \$15,000 to \$150,000 to look at ways of improving women's health. The recipients will be conducting research in sexual and reproductive health, cardiovascular health, oncology, orthopaedics and chronic pain.

Among the successful recipients is Dr Lakshini Gunasekera at Monash University who received funding to trial hormonal treatment for menstrual-related migraines.

Prof Helena Frawley, Dr Karin Jones and Dr Marlena Klaic at the University of Melbourne will be funded to investigate clinical outcomes for a new model of care for multidisciplinary pelvic pain designed for regional areas.

Dr Louise Segan at the Baker Institute will receive funding to better understand sex differences in symptoms and outcomes for women experiencing atrial fibrillation and other heart-related complications.

The package has also expanded the sexual and reproductive health hub network to 12 regional locations and increased access to laparoscopies for endometriosis and associated conditions, and provided scholarships for 150 women's specialists.

Early intervention is essential for autistic children

Autism Awareness Australia

Autism Awareness Australia has welcomed the release of the Grattan Institute's report, Saving the NDIS, acknowledging the urgent need for reform while underscoring the importance of protecting essential early interventions for autistic children.

Nicole Rogerson, CEO of AAA, said: "This report is a call for rebalancing a system that has become unsustainable. It's not about spending less, it's about spending smarter and ensuring all Australians with disability receive the support they need, not just those fortunate enough to secure individual packages."

The report highlights challenges facing the NDIS, including rapid growth and uneven distribution of resources. "Early intervention isn't simply an 'NDIS problem'. It's about providing support for lifelong outcomes for autistic individuals. We must commit to supports immediately, rather than proposing them as future solutions," Ms Rogerson emphasised.

"Autism is a lifelong condition requiring tailored, responsive support structures," Ms Rogerson stated. "We cannot risk tightening eligibility criteria without ensuring supports are in place to protect vulnerable families."

AAA urges swift government action to translate these recommendations into practical measures that safeguard well-being of autistic Australians. "This report provides the government with an opportunity for bold, brave action. I welcome comprehensive reform that delivers a more inclusive model for everyone" Ms Rogerson concluded.

RSV vaccinations now available for those in public sector residential aged care accommodation

Victorian State Government

The State Government is leading the nation in protecting older Victorians from Respiratory Syncytial Virus (RSV) – with free vaccine for residents in public sector residential aged care services. The Arexvy® RSV vaccine will be delivered to residents aged 60 and over in public and Aboriginal community-controlled aged care services.

RSV is a highly contagious respiratory virus that can affect people of all ages but can cause serious illness in older people – particularly those with existing heart or lung conditions or weakened immune systems. The Arexvy vaccine has been shown to reduce the severity of RSV infections, including the risk of complications like pneumonia and bronchiolitis.

The RSV immunisation program is supported by strong clinical guidance from the Australian Technical Advisory Group on Immunisation (ATAGI) which recommend RSV vaccination for people aged 75 and over, Aboriginal and Torres Strait Islander people aged 60 and over and those with medical risk factors.

The Government also has an RSV protection program for infants. In Australia, RSV is the leading cause of hospitalisation in infants, often progressing to pneumonia or bronchiolitis. Mothers are encouraged to get vaccinated during pregnancy to help build immunity in their baby. For those unable to be immunised with Abrysvo, or mums immunised less than two weeks before delivery, the nirsevimab vaccine is available for babies.

New paramedic recruits deployed

Victorian State Government

Victoria's ambulance service will receive a massive boost, with 59 new paramedics on the road from next week. This intake begin their 12-month placement on Monday. Made up of 57 Graduate Ambulance Paramedics (GAP) and two Ambulance Community Officers, the graduates will be deployed across Victoria.

Across Melbourne, 14 paramedics will join branches including Richmond, Altona, Melton, Epping and Oak Park. A further 45 will be placed across regional Victoria in towns including Hamilton, Sale, Traralgon, Wodonga, Mansfield, Shepparton, Horsham, Ballarat, Swan Hill, Ararat, and Gisborne.

The paramedics will work under the supervision of clinical instructors and alongside paramedics responding to real emergencies.

This latest cohort of graduates builds on a massive year of recruitment, including the largest ever intake of 30 MICA paramedics, who provide advanced lifesaving care.

The State Government has invested more than \$2 billion into ambulance services – increasing the on-road workforce by more than 50 per cent, delivering 41 new or upgraded ambulance stations and establishing a new Centre for Paramedicine in partnership with Victoria University.

Paramedics are getting the training and skills they need to deliver increasingly specialised levels of care, with Australia's first Paramedic Practitioners now training and more MICA paramedics being recruited.

Water Delivery



WAZZA'S
WATER CARTAGE

Stainless Tanker Up to 22,000 ltr loads
Barwon Water Registered

Domestic & Rural Water Supplies

Call Wazza
Mob: 0428 877 260
Email: wazza@wazzas.com.au Web: wazzaswater.com



5234 6585 0417 385 984
For all your domestic & stock water.
Also available for road and civil construction
Local owned and operated.

TIP TRUCK HIRE

- * **FRONTEND LOADER**
- 4 IN 1 BUCKET**
- * **DRIVEWAYS**
- LEVELLED OFF**
- * **RUBBISH REMOVAL**
- * **GRASS SLASHING**
- & RIDE ON**
- MOWER JOBS**

VINCE
0412 840 704

Knuckey's Winchelsea Ph: 5267 2011

Knuckey's have in stock a complete range of batteries to suit tractor, heavy machinery, cars, utes

The largest range of the best oil for your vehicles—**CASTROL**—
'when only the best will do'

The largest range of V belts.
A, B, C, D M Sections
Bolts and nuts for all occasions
Steel cut to size



SOUTHERN
GRAIN STORAGE PTY. LTD.

AG SUPPLIES FERTILISER GRAIN STORAGE SEED CLEANING
(03) 5267 2351

OZ TREES NURSERY & TREE PLANTING SERVICES

- Affordable seedlings—over 200 species
 - Complete plantation service—farm forestry, shelter, aesthetics
 - Deep ripping & mound ploughing. Rotary bed forming
 - Our experienced staff will help you select species for your site conditions and needs
- Also available—tree planting tools, milk cartons, plastic tree guards & bamboo stakes



569 Warrowie Rd. Colac
P: 5233 6280 F: 5233 6393
E: info@oztrees.com.au
W: www.oztrees.com.au
Open Monday—Friday
9am—4:30pm

Phone OzTrees for professional advice,



DANCE CLASSES

TAKING ENROLMENTS NOW
FOR OUR WINCHELSEA STUDIO

PRE-SCHOOLERS - ADULTS
CONTROLLED CLASS SIZES
JAZZ - THEATRICAL TAP - CLASSICAL BALLET
HIP-HOP - CONTEMPORARY DANCE

ENROL TODAY

WWW.MELSDANCECENTRAL.COM.AU



5234 6585 0417 385 984
For all your septic tank, grease traps
and interceptor pits servicing.
Locally owned and operated

52672192 R & K Creative Framing
for all your framing needs

free quotes
pension discount
specialist in Age &
Disability Modifications

Ray & Kim Jansen
10 Witcombe st
Winchelsea 3241
0414672192

Ray The Home
Maintenance HANDYMAN
abn 47928623462

Wednesday nights at 7pm and Thursday mornings at 10am
Leisure Time Centre Lesley Mathison 0438 672 197

Winchelsea Pickleball

Fletcher Allen

On Wednesday night we had an amazing time playing pickleball with a few lovely people!!

Come and give pickleball a go - Wednesday nights at 7pm or Thursday mornings at 10am at the Winchelsea Leisure Time Centre.

All equipment supplied Wear suitable footwear
It's a lot of fun for only \$5



Rising Stars Netball program is where to learn the basic skills





By Shae Callahan

WINCH RISING STARS NETBALL PROGRAM



FOR AGES 8-10

Confidence, Skills, and Game Readiness

-  Ball skills & movement drills
-  Game positioning team
-  Teamwork & court play
-  Real game simulations

Led by passionate coaches and supported by our club community.

Because every champion starts as a Rising Star!

Hopkins St, Winchelsea,
winchelseacricketclub1858@outlook.com

Winchelsea Cricket Club



AGM



Winchelsea Cricket Club invites you to our Annual AGM

We declare all positions vacant

President

Vice President

Junior Vice Presedent

Secretary

Treasurer x 2

Junior Co-Ordinator

Commitee Members

Monday 4th August 7PM
Members Room - Eastern Reserve



Contact the Winchelsea Junior
Football and Netball Club
Facebook page or Shae on
0409 641 550 to register or for
more information.

Winch Rising Stars Netball Program

For Ages 8-10 | Confidence, Skills, and Game Readiness

The Winch Rising Stars program is where our next generation of netball talent takes flight! Designed for players aged 8-10, this exciting program builds on the basics learned in NetSetGo and prepares players for competitive play with fun, structured, and engaging training.

Over the term, our Rising Stars will focus on:

- Ball skills & movement drills
- Court positioning & game rules
- Confidence in match play
- Teamwork & communication
- Real game simulations

Led by passionate coaches and supported by our club community, Winch Rising Stars is more than training — it's about helping young players shine on and off the court.

Because every champion starts as a Rising Star!



WINCHELSEA FACEBOOK



Community, Sports, Churches and Non-profits

What's on in Winchelsea	facebook.com/WhatsoninWinchelsea
Winchelsea FREE	facebook.com/groups/winchelseafree
Winchelsea Community Information	facebook.com/groups/207538644446972
Winchelsea Classifieds 3241	facebook.com/groups/216942861684082
Winchelsea Lost and Found	facebook.com/groups/768187693217518
Winchelsea Op Shop	facebook.com/HospitalAuxiliaryOpShopWinchelsea
Winchelsea Shire Hall	facebook.com/WinchelseaShireHall
Winchelsea Community House	facebook.com/winchelseacommunityhouse
The Green Winchelsea Residents	facebook.com/groups/515322772623126
Growing Winchelsea Inc	facebook.com/growingwinch
Winchelsea Star	facebook.com/TheWinchelseaStar
Winchelsea Movie Club	facebook.com/winchelseamovies
Winchelsea Community Market	facebook.com/100083362387611
Winchelsea Land and River Care Group	facebook.com/envirowinchelsea/
Upper Barwon Landcare Network	facebook.com/UpperBarwonLandcare
Winchelsea & District Historical Society Inc	facebook.com/Winchelseaanddistricthistoricalsociety/
Winchelsea Wildlife Shelter	www.winchelseawildlifeshelter.com/
SCARS - Surf Coast Animal Rescue Service	facebook.com/groups/415211698950674
Winchelsea Gardeners	facebook.com/groups/779878518703025
Winchelsea & District Historical Society	facebook.com/Winchelseaanddistricthistoricalsociety/
Winchelsea Repertory Society Inc	facebook.com/winchrep/
Winchelsea Globe Theatre	facebook.com/Winchelsea-Globe Theatre-164790897641678
Winchelsea Uniting Church	facebook.com/winchelseaunitingchurch
St Thomas' Anglican Church	facebook.com/StThomasWinchelsea
St John the Baptist Catholic Church	facebook.com/pages/Winchelsea-Catholic-Church/101775670163180
Winchelsea Mainly Music	facebook.com/groups/668500343953191/
Winchelsea Health Club	facebook.com/WinchelseaHealthClub
Winchelsea Playgroup (School terms only)	facebook.com/groups/551663435367031
Winchelsea Girl Guides	www.guidesvic.org.au/
Winchelsea/Modewarre Scouts	facebook.com/1stModewarreScouts
Winchelsea Fire Brigade	facebook.com/winchelseafirebrigade/
Winchelsea SES	facebook.com/groups/WinchSES
Country Women's Association - CWA Winchelsea	facebook.com/pg/CWAWinchelsea/
Winchelsea Bowls Club	facebook.com/Winchelsea-Bowls-Club-533783333344345/
Winchelsea Blues Cricket Club	facebook.com/groups/8999049476/
Winchelsea Blues FC	facebook.com/WinchelseaFNC/
WYLD Winchelsea Youth Leisure and Drop in	facebook.com/groups/569737570027065/
Lions Club of Winchelsea	facebook.com/LionsWinchelsea
Winchelsea Probus	facebook.com/893535194971083
Winchelsea Golf Club	facebook.com/winchelseagc/ facebook.com/groups/1324943804676697
Winchelsea Zumba Crew	facebook.com/groups/479475585109144

Take the lead.



Contribute to Council's next Domestic Animal Management Plan.

SCAN ME



Share your feedback about cats and dogs across the shire and how you think we can all play our role so the Surf Coast is a place where people and pets can live together safely.

As we develop the plan, we're calling on locals and visitors to take the lead and be responsible pet owners.

While we acknowledge there are many pet owners who always do the right thing, we want to keep working on the common animal management issues we're dealing with. This will benefit the community and the environment.



Register your pet.



Pick up dog poo when you're out and about.



Keep a close watch on your furry friend.



Stick to our 24-7 cat curfew to protect native wildlife.

HAVE YOUR SAY

surfcoast.vic.gov.au/Damp2025



For all your livestock, rural real estate and property management needs, speak to the Charles Stewart team

Livestock

Peter McConachy 0408 522 878
Jamie McConachy 0418 522 879
Matthew Nelson 0428 315 400
Gerard Bohan 0400 005 541
Dougal McIntyre 0439 575 612

Real Estate

Michael Stewart 0418 520 467
Peter McConachy 0408 522 878
Andrew Rice 0457 105 500
Josh Lamanna 0417 586 032
Daryl Osborne 0419 388 341
Anthony McDonald 0418 593 597

Property Management - 5231 5011

Sarah Higgs Nathan Gray Daniella De Rooy



15 Murrell Street, Winchelsea 5231 5400



Call Matt - 0418 319 357
mbwoodplumbing.au

Servicing Winchelsea & surrounds

- General maintenance & blocked drains
- Gas fitting & hot water service upgrades
- New homes & renovations



mainly music
est. 1990

DIGITAL ANTENNAS SALES & INSTALLATIONS

Hi-Gain Antennas P/L

1/21 Leather St, Breakwater

PH: 5222 2711

Manufactured by us in Geelong
Mon - Fri 7.30am - 4.30pm





17 Alsop Drive

- ❑ LOG BOOK SERVICE
- ❑ AUTO ELECTRICAL
- ❑ TOWING
- ❑ AIR CONDITIONING
- ❑ CLUTCH & BRAKES
- ❑ TYRES
- ❑ WHEEL ALIGNMENT
- ❑ BATTERIES

CAR, TRUCK REPAIRS & Roadworthys

PH: 5267 3001

Mob: 0417 137 457

Green Lead Electrical

Connecting you to a greener future
REC 23618

0467 097 101



Servicing Geelong & the Surf Coast

Specialising in all residential electrical work including:

- Switch board & lighting upgrades
- Outdoor lighting
- Electrical safety checks
- Energy efficient LED lighting
- Ceiling sweep fans & ventilation
- Energy saving advice

Phone Martin Wilkinson:

0467 097 101

greenlead@outlook.com

1132268-CG18-14

Quick Response Grants

NOW OPEN!

Grants of up to \$3,000 for equipment and community led projects

To apply: surfcoast.vic.gov.au/Grants

surfcoast.vic.gov.au



Wightons Lawyers

Dispute Resolution & Litigation

Debt Collection

Property Law

Wills & Estates

Powers of Attorney

Business Law

Family Law

By appointment only

22 Willis Street, Winchelsea
ph. 5221 8777

www.wightons.com.au

Winchelsea
**Medical
Clinic**

Located at 36 Main Street, Winchelsea 3241

For any enquires or bookings please contact the clinic on 5292 8028.
Or visit our website: www.winchmc.com.au

Opening Hours:

Monday - Friday 8:00am - 5:00pm

(Monday Evening Clinics available and selected Saturdays)



Our clinic accepts online bookings via the app called HotDoc.
Download the app on the App Store or Google Play or head to our website.



Caring for families since 1883

Every detail matters...

Tuckers
Funeral & Bereavement Service
...for a life worth celebrating

AFDA Member

PH: 5221 4788

www.tuckers.com.au





SURF COAST

ARTSTrail 2025

**Saturday 2 & Sunday 3 August
10am-4pm**



Begin planning your weekend!

Contact us via email artsteam@surfcoast.vic.gov.au or phone **03 5261 0600**
Follow us on Facebook & Instagram [@surfcoastartmatters](https://www.instagram.com/surfcoastartmatters)

Photo: Lauren McQuade Handmade Credit: Bobby Dazzler Photography

Wadawurrung,
Gulidjan, Gadubanud Country

surfcoastartstrail.com.au #SurfCoastArtsTrail



eldersrealestate.com.au



You're in Safe Hands With Peter Lindeman *Delivering Exceptional Results for Over 20 Years*

If you're thinking of selling a Rural or Lifestyle acreage property on the Bellarine, the Greater Geelong region or beyond then think Peter Lindeman.

Peter spent 20 years managing farms before jumping the fence to sell them; and over the last 23 years he's helped over 350 vendors achieve extraordinary results, more often than not surpassing their expectations. Why not let Peter show you how he can help you achieve an outstanding result for your property.

Peter Lindeman - 0418 525 609

RURAL AND LIFESTYLE SALES MANAGER - ELDERS GEELONG



E: peter.lindeman@elders.com.au



Domestic - Commercial - Rural

0400 643 976

- All general Plumbing and Gasfitting • Water tanks and Pumps
- Renovations and Extensions • Hot water and Heat pump
- Split system and Wood heaters • Roof and Gutter
- Septic and Treatment plants • Excavation, Bobcat and Tipper
- Driveways and Earthworks
- Blocked drains and CCTV Inspection

Simon McGillivray

Lic: 109610 Free Quotes, Fast & Friendly Service

NATURAL GAS CONNECTIONS

**M. & L DRAYTON
PLUMBING SERVICES**

YOUR LOCAL LICENSED

- PLUMBERS (24356)
- GAS FITTERS
- GAS CONVERTERS
- CARBON MONOXIDE TESTING

MARK 0428 520 142





Life's busy. Let us help you.

Contact us today

We can help you with:

- Buying your first or next family home
- Saving for your first home
- Residential Investment Lending
- Refinancing from your current lender
- Home loan reviews
- Pre-approvals

With extensive banking experience and financial expertise, we'll help bring your financial goals to life.



Ebony Berg
0400 784 249



Josie Kavenagh
0409 564 192



Community Bank
Winchelsea and District

A family business operating for more than 138 years, HF Richardson services an extensive client base throughout the greater Winchelsea area. Our success is built on a long history of innovation and while we've moved with the times, our basic values of honesty, trust and integrity have remained.



Eric Foster
0429 499 924
Sales Executive



Ken McDonald
0418 524 150
Licensed Estate Agent

Residential | Rural Lifestyle
Agricultural Farms

HF RICHARDSON
PROPERTY

www.hfrichardson.com.au

PAPER RECYCLING

**Paper depot rear of
Senior Citizens
Rooms
Harding Street
NEWSPAPERS
MAGAZINES
PHONE BOOKS**



**All money raised used
for local community
4224 0226**



WINCHELSEA LIONS CLUB 022559
30 Members

Last financial year contributed
4000 hours of time and effort
which generated in excess of
\$24,000 to support local community,
national and international projects

**COME AND JOIN
WINCHELSEA LIONS**
winchelsea.vic@lions.org.au
(03) 4224 0226

Contact us today and a Lions
member will be in touch to wel-
come you to the Club.

PAPER LOGS & ROLLS

**No Chainsaw Needed
Made By Recycled Paper
Environmentally Friendly
Ash Good For Garden**



**1 Roll
\$2
Pack of 4 Logs
\$5**

By using paper logs you save trees



**Contact Alan
0476 475 422**

All money raised used for local community





Water Supply
Specialists

WATER SOLUTIONS

74 Dennis Street, Colac
5231 1861



ALL THINGS WATER:

• PUMPS • PIPES
• FITTINGS • TANKS
• POOL CHEMICALS
• IRRIGATION
• WATER PURIFICATION
• SOLAR • REPAIR

Winchelsea
Star

ISSN 2202-6851



9 772202 685002

R.A.K. DAVIS
& SONS

**CARTAGE
CONTRACTORS**

WINCHELSEA

SUPPLIER OF ALL QUARRY MATERIALS, TRUCK HIRE

CARTAGE OF GRAIN, LIME, GYPSUM & SUPER

LANDSCAPE & GARDEN SUPPLIES

56 WILLIS ST, WINCHELSEA

Ph – 5267 2094

Ryan – 0438 672 281

email: rakdavissons@gmail.com

AlfordBuilt

*New Homes, Renovations, Extensions,
Bathrooms, Decks & Pergolas*

0408 583 362

stephen@alfordbuilt.com.au



REGISTERED
Building Practitioner

DEFIBRILLATORS IN WINCHELSEA

Accessible to the public
24 hours a day



The Winchelsea Lions Club has compiled a list of public access defibrillators in Winchelsea. If anyone knows any others with 24 hour public access, please let Linda Carter know 0439 817 263.

Ambulance Victoria
33 Willis Street

Bendigo Bank
11 Main Street

Globe Theatre (Side entrance)
17 Willis Street

Hesse Rural Health
8 Gosney Street

Men's Shed
51 Hesse Street

Netball Courts
Eastern Reserve Hopkins St

Senior Citizens Club
36 Harding Street

Uniting Church
33 Hesse Street

Winchelsea Bowls Club
Hesse St,

Winchelsea Cemetery
McConachy St

Winchelsea Golf Club
13 Anderson Street

Winchelsea Primary School
Main Street

Wurdale Memorial Hall
220 Wurdale Road

