



1253 ADAMS RD
Bowen Island



Tim Rhodes
REALTOR®







KITCHEN

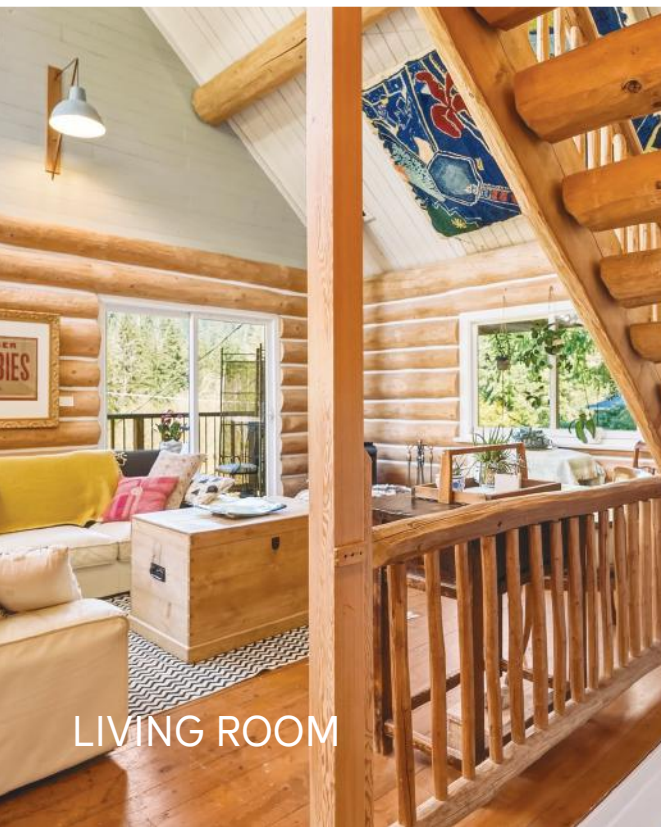


PANTRY





LIVING ROOM



LIVING ROOM



LIVING ROOM



LOFT



BEDROOM / OFFICE - MAIN FLOOR





PRIMARY ENSUITE



PRIMARY ENSUITE



PRIMARY BEDROOM





PRIMARY BEDROOM



PRIMARY BEDROOM



SUITE BEDROOM



SUITE



SUITE



LAUNDRY

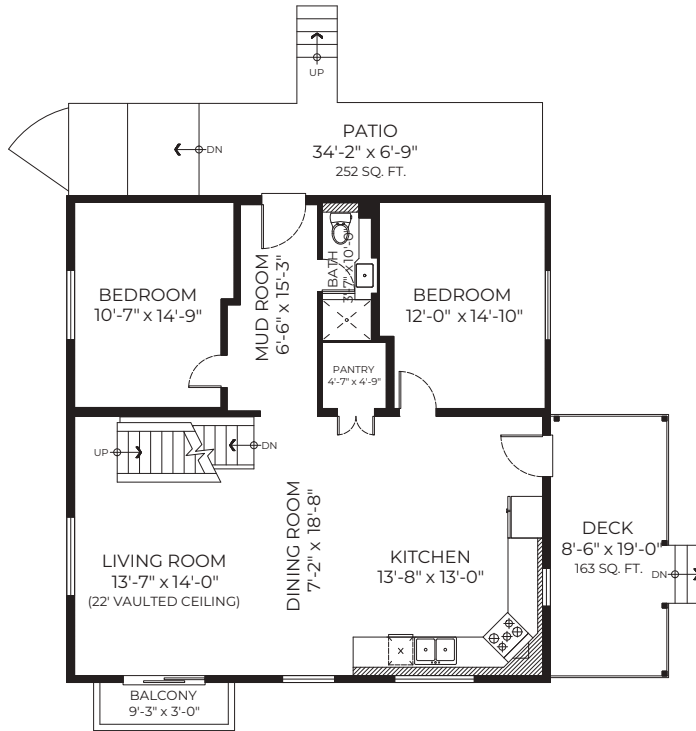


FAMILY ROOM

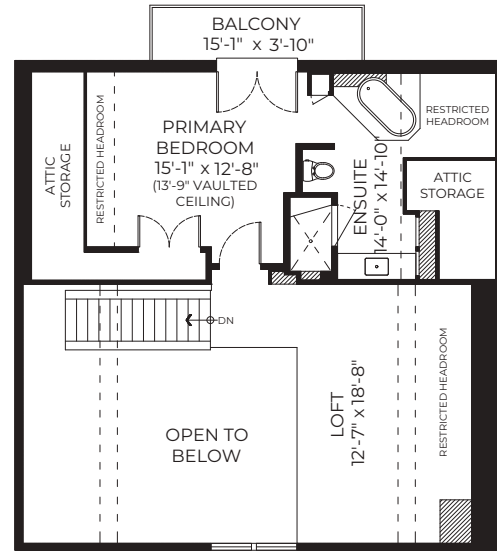


BEDROOM - LOWER FLOOR

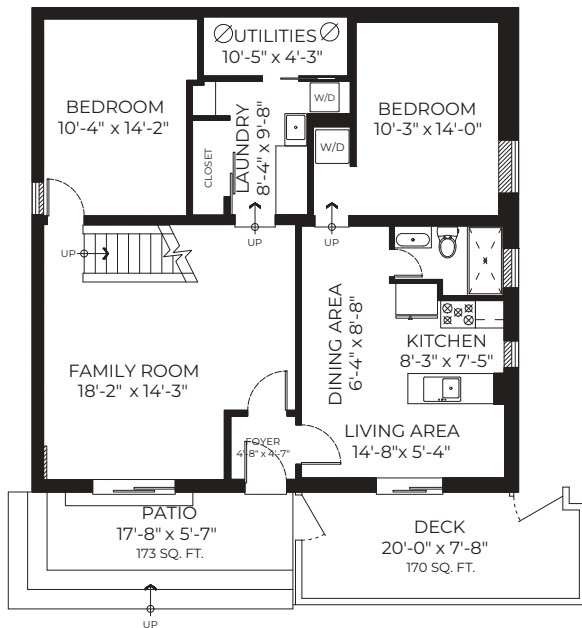
1253 ADAMS RD | Bowen Island | 2989 SF | 5 Beds | 3 Baths | Suite | 0.42 Acres



MAIN FLOOR PLAN



UPPER FLOOR PLAN



LOWER FLOOR PLAN
Ceiling Height: 8'-0"

Upper Floor: 545 SQ. FT.
Main Floor: 1221 SQ. FT.
Lower Floor: 1223 SQ. FT.
Total: 2989 SQ. FT.

Upper Balcony: 58 SQ. FT.
Main Balcony: 35 SQ. FT.
Rear Patio: 252 SQ. FT.
Deck: 163 SQ. FT.
Front Patio: 173 SQ. FT.
Front Deck: 170 SQ. FT.

MEASUREMENTS ARE APPROXIMATE AND MAY NOT BE TO SCALE.
THE FLOOR PLAN ILLUSTRATION IS NOT SUITABLE FOR
CONSTRUCTION/ARCHITECTURAL PURPOSES. E&O INSURED.

Although this information has been received from sources deemed reliable, we assume no responsibility for its accuracy, and without offering advice, make this submission to prior sale or lease, change in price or terms, and withdrawal without notice.



Tim Rhodes
REALTOR®

604-341-9488
tim@rhodesonbowen.com
RHODES ON BOWEN REAL ESTATE

