

hydraBOND[®]
WELDING

Catalog

Welding Equipment And NDT Supplies!

hydraBOND®_Welding-Catalog_No.EN-09022024.v2



hydraBOND.com



- ✓ Light Industrial Applications
- ✓ Single-phase, 120 and 240 V, 50/60 Hz
- ✓ Power Supply: 127/220 V 1 Ph., 60 Hertz
- ✓ Amperage Welding Range: 30A to 200A
- ✓ Duty Cycle: 40%

Quick Specs

Applications:

- ✓ Welding workshops.
- ✓ Automotive mechanic workshops.
- ✓ DIY
- ✓ Metal art
- ✓ Farm/Ranch
- ✓ Maintenance/Repair

Comes With:

- Strap to carry on the shoulder.
- Input cable.
- Set of cables for soldering (with ground clamp, electrode holder and quick connectors).
- Owner manual, maintenance guide, parts list and warranty policy.

Advantages:

- Electronic current control that allows a precisely use of the welding current.
- INVERTER type power supply.
- Compact, lightweight and easy to carry, to load the shoulder while welding.
- Protection against overheating, which prevents damage to the equipment due to abuse of the duty cycle.
- Cooling system forced ventilation.
- Dual supply voltage 127/220 V AC +/- 10% (automatic configuration according to present voltage).
- Digital process selector.
- Power light indicator.
- Indicator light of process
- Indicator light for thermal protection.
- Indicator light of supply voltage present..

Light Industrial Applications:

- Stick (SMAW) of DC in diameters of 1.6 to 4.0 mm (**1/16" to 5/32"**) E7018, E6013 E6010 E6011 and INOX.
- Welding TIG (GTAW) Mainly for stainless steel, arc controlled start **CONTACT-TIG** system with tungsten electrode diameters of **0.040 and 1/6"**

Process*

- ✓ DC Stick (SMAW)
- ✓ TIG (GTAW)



⚠ **WARNING:** Read carefully and understand all **ASSEMBLY AND OPERATION INSTRUCTIONS** before operating. Failure to follow the safety rules and other basic safety precautions may result in serious personal injury.



TDS



0 767787 958909



Specifications (Subject to change without notice)

Welding Process	Input Power	Rated Output 40% Duty Cycle	Welding Amperage Range	Max. Open Circuit Voltage	Input at Rated Output, 50/60 Hz. A KVA KW	Dimensions in (mm)	Weight lb (kg)
Stick	120 V	130 A @ 23 V	30 A - 130 A	78 VAC	43 5.4 3.8	H: 11.3" (295 mm) W: 6.1" (155 mm) L: 16.9 (430 mm)	Net: 15.4 (7.0) Ship: 23.8 (10.8)
	240 V	200 A @ 26 V	30 A - 200 A		48 10.9 6.7		
TIG	120 V	130 A @ 15 V	30 A - 130 A		32 4.2 2.8		
	240 V	200 A @ 18 V	30 A - 200 A		32 7.2 4.2		

BHG Import Export Inc.

Glendale, CA 91203

Web: bhg.us.com

Sales: oganes@bhg.us.com

Service: support@bhg.us.com



hydraBOND.com

HB200 • TDS • v.02 • Issued Oct. 2022 • Index No. 0001 • UPC: 767787958909

hydraBOND[®]

WELDING

HB300MM **DC** **CV** **1** PHASE

TDS



Process*

- ✓ **MIG Welding (GMAW)** with gas in diameters out of 0.6 to 1.2 mm (0.023" to 0.045").
- ✓ **Flux cored (FCAW)** in diameters out of 0.9 to 1.2" mm. (0.035" to 0.045").
- ✓ **MIG (GMAW) aluminum** diameters of 0.9 mm to 1.2 mm (0.035" to 3/64").

Advantages:

- Electronic current control that allows a precisely use of the welding current.
- Innovative 7-inch color screen.
- Memory capacity to load and save welding parameters.
- 2-position switch to select the supply voltage (**220 V / 440 V AC**).
- Adjustable spot and trim for repetitive welding and spot welding.
- 14-pin receptacle
- Overheating protection, which prevents damage to equipment from duty cycle abuse.
- Forced ventilation cooling system.
- Easy to transport as it includes wheels, handlebars and cylinder holder
- Housing for consumables.
- Lateral support for cables and torch.

Industrial Applications:

- ✓ Automotive workshops.
- ✓ Manufacture of equipment for the food industry.
- ✓ Production lines in the manufacture of containers for the industry in general.
- ✓ Manufacture of refrigeration and air conditioning equipment.
- ✓ Industrial process plants

Optional Accessories:

- MIG 250 AMP torch.
- Teflon guide for MIG 250 AMP torch.
- Spotting nozzle for MIG 250 AMP torch.



Quick Specs

PROCESSES

- MIG (GMAW)
- Pulsed MIG (GMAW-P)
- Flux-cored (FCAW)
- DC TIG (GTAW)
- Pulsed TIG (GTAW-P)

INDUSTRIAL APPLICATIONS

- ✓ Contract welding services
- ✓ Plant maintenance shops
- ✓ General fabricators

AMPERAGE RANGE: 5–350 A
NET WEIGHT: 265 lb. (120 kg)

- **INPUT POWER:** 208–575 V, single-phase
- **RATED OUTPUT MIG:** 230 A at 25.5 V, 60% duty cycle
- **STICK:** 200 A at 28 V, 60% duty cycle
- **TIG:** 275 A at 21 V, 60% duty cycle



0 767787 958855



TDS



Specifications (Subject to change without notice)

Input Power	Rated Output 60% Duty Cycle	Continuous Output 100% Duty Cycle	Rated Output 45% Duty Cycle	Welding Amperage Range	Welding Voltage Range	Max. Open Circuit Voltage	Input at Rated Output, 60 Hz A kVA kW	Dimensions in (mm)	Weight lb (kg)
220 VAC	250 A @ 26.5 VDC	190 A @ 23.5 VDC	280 A @ 28 VDC	30 A - 280 A	10 - 28 VDC	37 VDC	60 8.5 9.1	H: 31.3 (790) W: 14.5 (370) L: 341.3 (1050)	Net: 265 (120) Ship: 275 (125)
440 VAC							30		

⚠ **WARNING:** Read carefully and understand all **ASSEMBLY AND OPERATION INSTRUCTIONS** before operating. Failure to follow the safety rules and other basic safety precautions may result in serious personal injury.

BHG Import Export Inc.

Glendale, CA 91203

Web: bhg.us.com

Sales: oganes@bhg.us.com

Service: support@bhg.us.com



HB300MM • TDS • v.02 • Issued Oct. 2022 • Index No. 0001 • UPC:767787958855

hydraBOND.com

OPTIONAL ACCESSORIES:

For CC:

- Pulsarc Control.
- Torch Tig 200 V (CONTACT-TIG) and HFU 252).
- Torch TIG 300.
- Cooler EFA 255.
- Remote control RFC 14.
- High frequency unit HFU 252.

Advantages:

- Advanced technology in inverter type.
- Arc control to make electrodes application easier even with difficult ones.
- Electronic inductance control.
- Automatic voltage regulator which compensate power variations.
- Failure indicator with error code on screen.
- Automatic fan operator, works only when needed.
- Automatic change of power supply system. Auto link.
- Process welding selector.
- Digital voltmeter and ammeter which allows welding values adjustment.
- Light and compact.
- Duplex receptacle, output 120 V, AC.

COMES WITH:

- ✓ Two universal plugs.
- ✓ Power supply 3 m 4x8 Awg
- ✓ Owner manual: Operation guide, maintenance guide, list of parts and warranty.

PROCESS:

- Welding with shielded metal arc diameter from 0.0625 mm to 0.25 mm (1/16" to 1/4").
- STICK (SMAW) DC.
- Welding TIG (GTAW) of DC With Start special src system Type
- CONTACT-TIG.
- Flux Cored (FCAW) diameter from 0.9 to 1.2 mm (0.035" to 1/16").
- (GMAW-P) MIG (GMAW) and pulsed MIG diameters from 0.9 To 1.6 mm (0.035 to 1/16") With Pulsarc.
- Control optional.

OPTIONAL ACCESSORIES:

For CV:

- ✓ HBVSF VOLTAGE-SENSING WIRE FEEDER
- ✓ Torch for aluminum Spool Gun.
- ✓ Torch MIG 400 A.
- ✓ Interconnection cables.

Quick Specs

Three phase: 400 A @ 36 VDC 40% D.C.
Single phase: Maximum Output 225 A @ 29 VDC 60% D.C.

Three phase: Continuous output 100% Duty Cycle 230 A @ 29 VDC
Single phase: Maximum Output 175 A @ 27 VDC
Net: 83.7 Lbs (38 Kg)
Ship: 90 Lbs (41 Kg)

NEW!



⚠ **WARNING:** Read carefully and understand all **ASSEMBLY AND OPERATION INSTRUCTIONS** before operating. Failure to follow the safety rules and other basic safety precautions may result in serious personal injury.

HEAVY INDUSTRIAL APPLICATIONS

- ✓ Construction
- ✓ Shipbuilding
- ✓ Railroad
- ✓ Truck/trailer manufacturing
- ✓ Fabrication
- ✓ Repair shops
- ✓ Rental fleets
- ✓ Power generation plants



0 767787 958916



TDS



ISO 9001
Quality

Specifications (Subject to change without notice)

Phase	Input Power	Rated output 60% Duty Cycle	Continuous output 100% Duty Cycle	Maximum Output	Welding Amperage/ Voltage Range	Max. Open Circuit Voltage	Input at Rated Output, 60 Hz A kVA kW	Dimensions in (mm)	Weight lb (kg)
Three phase	220V	300 A @ 32 VDC	230 A @ 29 VDC	400 A @ 36 VDC 40% D.C.	5 A - 400 A 10 V - 35 V	95 V	32	H: 17.5 (447) W: 13.7 (349) L: 24 (610)	Net: 83.7 LBD (38 Kg) Ship: 90Lbs (41 Kg)
	440 V						12.5 11.5		
Single phase	220 V	225 A @ 29 VDC	175 A @ 27 VDC	225 A @ 29 VDC 60% D.C.	5 A - 400 A 10 V - 35 V	95 V	50	H: 17.5 (447) W: 13.7 (349) L: 24 (610)	Net: 83.7 LBD (38 Kg) Ship: 90Lbs (41 Kg)
	440 V						11.5 8		

HB355_2K_355_CC/CV • TDS • v.02 • Issued Oct. 2022 • Index No. 0001 • UPC:767787958916

BHG Import Export Inc.

Glendale, CA 91203

Web: bhg.us.com

Sales: oganes@bhg.us.com

Service: support@bhg.us.com



hydraBOND.com

PROCESSES

MIG (GMAW) & FLUX CORED (FCAW).

STANDARD FEATURES

- ✓ Part #HBVSF
- ✓ Weld Circuit Rating 400A @ 60% Duty Cycle
- ✓ Spool Capacity 12" (304mm)
- ✓ Input Power Open Circuit Voltage & Arc 14-100V DC
- ✓ Power Source Type CC or CV (DC)
- ✓ Wire Diameters .023" - 5/64" (0.6 - 2.0mm)
- ✓ Wire Feed Speed 60 - 800 IPM (1.52 - 20.32m/min)
- ✓ Gas Inlet 5/8"-18RH Female
- ✓ Height 17" (432mm)
- ✓ Width 8.5" (216mm)
- ✓ Depth 21.5" (546mm)
- ✓ Weight 37 lbs. (17kg)

Quick Specs

INDUSTRIAL APPLICATIONS

- ✓ Contract Welding Services
- ✓ Plant Maintenance Shops
- ✓ General Fabricators
- ✓ Applications For Construction,
- ✓ Shipbuilding,
- ✓ Rental Fleets,
- ✓ Manufacturing And More!



HBVSF Voltage Sensing Portable Wire Feeder (2 Roll)

SPECIAL FEATURES:

- Trigger hold (reduces operator fatigue on longer welds)
- Two (2) gear driven rolls with Tool-Less roll change
- .035/.045 solid wire drive rolls included
- Accepts Miller style gun connection
- Digital LED meters
- Top meter can show amperage or wire feed speed
- CC/CV mode selector switch
- High/Low wire feed speed selector switch
- Wire jog button
- Gas purge button
- Resettable circuit breaker
- 15' Sensor lead with disconnect & Lenco MG-180 clamp
- 3' of 3/0 AWG input cable w/ Lenco LC-40HD male connector
- High impact latching case with folding handle & removable legs

⚠ WARNING: Read carefully and understand all **ASSEMBLY AND OPERATION INSTRUCTIONS** before operating. Failure to follow the safety rules and other basic safety precautions may result in serious personal injury.

COMES WITH:

- ✓ Owner manual: Operation guide maintenance guide, list of parts and warranty.

Specifications (Subject to change without notice)

Type of Input Power	Welding Power Source Type	Wire Feed Speed	Wire Diameter Range	Input Welding Circuit Rating	Max. Wire Spool Capacity	Overall Dimensions	Weight
Open-Circuit/ Arc Voltage, 14 - 110 Volts DC	Constant Voltage (CV) Or Constant Current (CC) DC Power Source Only	60 - 850 ipm (1.52 - 21.6 mpm) Depending On Arc Voltage	Solid Wire: .023 - .052 in. (0.6 To 1.3 mm) Flux Cored: .030 - 5/64 in. (0.8 To 2 mm)	300 Amperes At 100% Duty Cycle 400 Amperes At 60% Duty Cycle	45 lb (20.4 kg), 12 in. (304 mm)	Length: 21.5 in. (546 mm) Width: 8.5 in. (216 mm) Height: 17 in. (432 mm)	33 lb (15 kg)
Motor Speed				Rated Speed Range*			
Standard				All			
				.023 To 5/64 in. (0.6 To 2 mm)			
				50 to 780 ipm (1.3 -19.8 mpm)			



TDS



0 767787 958923



ISO 9001 Quality

BHG Import Export Inc.
Glendale, CA 91203
Web: bhg.us.com
Sales: oganes@bhg.us.com
Service: support@bhg.us.com



hydraBOND.com

hydraBOND[®]

WELDING



HBCP303

TDS

COMES WITH:

- ✓ Owner manual: Operation guide maintenance guide, list of parts and warranty.



⚠ **WARNING:** Read carefully and understand all **ASSEMBLY AND OPERATION INSTRUCTIONS** before operating. Failure to follow the safety rules and other basic safety precautions may result in serious personal injury.



**INDUSTRIAL WORK
HEAVY**

Processes :

- MIG (GMAW) welding with micro wire in diameters from 0.9 to 1.6 mm (0.035" to 1/16").
- Flux cored tubular welding (FCAW) with or without gas in diameters from 0.9 to 1.6 mm (0.035" to 1/16").

Advantages:

- Momentary switch to verify voltage setting.
- Digital meters.
- Excellent arc stability when welding.
- Forced ventilation cooling system.
- Side support for cables and torch.
- 14-terminal receptacle for connecting the feeders and special torch (OPTIONAL) for AEC 200 aluminum.
- Mechanical voltage control.
- Casters included for easy movement.

Optional gadgets:

- S 302 T 2-roll feeder
- PF 400 torch.
- Push Pull torch for aluminum.

Applications:

- Recommended for continuous industrial work.
- Teaching in technical institutes.
- Manufacture of maritime and land containers.
- Steam boilers, medium pressure vessels and piping.
- Automotive industry.
- Manufacture of equipment for the automotive industry.
- Manufacture of equipment for the food industry.
- Manufacture of equipment for the pharmaceutical and medical industry.
- Industrial process plants.

It is supplied with:

- Cable with ground clamp.
- Interconnection cable.
- Manual that includes: Operation guide, maintenance guide, parts list and warranty policy.



Specifications (Subject to change without notice)

Voltage of Feeding	Output Current Nominal 100% CT	Output Current Maximum 60% CT	Range Current Welding	Range Voltage Welding	Max Voltage Circuit Open	Load Consumption Nominal, 60 Hz. A kW	Dimensions mm (inches)	Weight kg (lb)
220 V ac	300 A @ 32 V dc	400 A @ 32 V dc	20A - 400A	13 - 36 V dc	44 V dc	36	Height: 838 (33) Width: 571 (22.5) Length: 1232 (48.5)	Net: 124 (273) Emb: 128 (282)
440 V ac						12.3 18		

BHG Import Export Inc.

Glendale, CA 91203

Web: bhg.us.com

Sales: oganes@bhg.us.com

Service: support@bhg.us.com



hydraBOND.com



7 677879 591286



TDS



⚠ **WARNING:** Read carefully and understand all **ASSEMBLY AND OPERATION INSTRUCTIONS** before operating. Failure to follow the safety rules and other basic safety precautions may result in serious personal injury.

Advantages:

- Two and four stroke trigger mode control (2T - 4T)
 - 2T: When the trigger is pressed, welding begins. When the trigger is released, welding stops.
 - 4T: When the trigger is pressed, welding begins. When the trigger is released, welding continues, allowing long beads to be made without hand fatigue. When the trigger is pressed again, welding continues but the feeder is informed to prepare to finish. Finally when you release the solder it stops.

It is supplied with:

- Set of 0.9 and 1.2 mm (0.035" and 0.045") rollers.
- Voltage and wire speed control
- Wire trimmer.
- Gas hose.
- Manual that includes: operation guide, maintenance guide, parts list and warranty policy.

Processes:

- MIG micro wire electrode (GMAW) diameters from 0.6 to 1.2 mm (0.023" to 0.045")
- Flux cored tubular electrode (FCAW) with or without gas, in diameters from 0.8 to 3.2mm (0.030" to 1/8")



COMES WITH:

- ✓ Owner manual: Operation guide maintenance guide, list of parts and warranty.

Applications

- For use with constant potential power sources, with power output and sufficient current capacity for the specified electrode diameters and speeds.
- Suitable for HBDELTAMIG 355, HBDELTAMIG 455 and HBDELTAMIG 655, HBOPUS 2K-355 and HBOPUS 560.

Specifications (Subject to change without notice)

24 V power supply AC, 1 phase, 60 Hz,	Number of rollers	Speed of electrode	Electrode diameters	Weight	Dimensions
10A, AC	4	Minimum: 1.3 (50) Maximum: 22.8 (900)	0.6mm (0.023") 3.2mm (1/8")	Net: 19.5kg Pack: 21.5 kg	Height: 387 mm Width: 286mm Length: 641mm

BHG Import Export Inc.

Glendale, CA 91203

Web: bhg.us.com

Sales: oganes@bhg.us.com

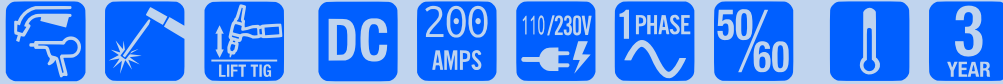
Service: support@bhg.us.com



hydraBOND.com



INNOVATION ON WELDING!




HB2000™ (PFC) Multi Process is ENGINEERED for:
Body Shop, Collision & Refinishing Service

MIG STICK TIG

Processes:

- ✓ DC TIG (GTAW)
- ✓ MIG Brazing
- ✓ Flux Cored (FCAW)
- ✓ MIG (GMAW)^o Stick (SMAW)

 **Input Power**
110V, 20 A, 50/60 Hz, single -phase
230V, 18 A, 50/60 Hz, single -phase

Delivered with:

- ✓ MIG-torch MB15AK-Air-Cooled-Mig-Welding-Torch
Length: 3m (10 feet) (ref.HB2004)
- ✓ Regulator with hose included (ref.HB2002, HB2003)
- ✓ Earth Earth clamp with cable and DINSE connector
200A (ref.HB2002)
- ✓ HB Helmet (ref.HB2019)^o Contact Tips .023, .030, .035
(ref. HB6051, HB6052, HB6053,)
- ✓ Multi Purpose Welder Cart (ref.HB2020-A)
- ✓ 1, 11 LBS Spool ER70S-6 welding wire .030
(ref.HB6005) OR .035 (ref.HB6008)
- ✓ DC Electrode holder with 3M cable with
DINSE-type connector. (ref.HB2010)
- ✓ ADAPTER 5-15P and 6-50R. (ref.HB2007)
- ✓ Drive Rolls (ref.HB2008) & (ref.HB2009)

Optional:

- ✓ TIG Torch (ref.HB2005)
- ✓ Spool Gun (ref.HB2001)



BHG Import Export Inc.

Glendale, CA 91203

Web: bhg.us.com

Sales: oganes@bhg.us.com

Service: support@bhg.us.com



hydraBOND.com

⚠WARNING: This product can expose you to chemicals, which are known to the State of California to cause cancer and birth defects or other reproductive harm. For more information, go to www.P65Warnings.ca.gov. Please consult the Safety Data Sheet. It is strongly recommended to use appropriate personal protective equipment during application.

APPLICATIONS

- MIG/MAG MANUAL TORCHES.
- PLASMA CUTTING TORCHES.
- MIG/MAG ROBOTIC TORCHES.
- TOOLS, PARTS AND WORKING AREAS.
- PLASMA CUTTING GRIDS
- SPOT WELDING.
- BRAZING (CuSi3).
- WORKING SURFACES ON PARTS.

HOW TO USE

- ✓ Spray a thin film to the surface to be welded.
- ✓ Spray on the inside / outside of the nozzle before starting to weld.

NO SMOKING.

Do not spray on an open flame or other ignition source.

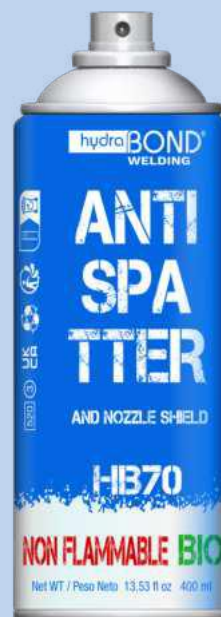
- Compatible with painting process
- Cleaning effect
- Welded joints without pores.
- The best antioxidant protection on the surface of parts.
- 0% harmful effects to the welder.
- Increases arc stability, ensuring free flow of gas.
- Silicone heat-resistant barrier.
- Long-lasting anti-stick effect.
- Weld projections are easily removed with a cloth.
- Economical use because it forms a thin film.
- Contains powerful and effective corrosion inhibitors to protect treated surfaces and equipment.
- Optimal on galvanized surfaces.

CHARACTERISTICS AND ADVANTAGES

- ✓ **Non flammable**
- ✓ Biodegradable. **DANGER!** Pressurized container: Do not pierce or burn, even after use. Protect from sunlight. Do not expose to temperatures exceeding 50°C/122°F. Keep away from heat, sparks, open flames, and hot surfaces.

Quick Specs

FORMATS: Spray Can



TDS



HB70 • TDS • v.02 • Issued Oct. 2022 • Index No. 0001 • UPC: 767787958930

BHG Import Export Inc.

Glendale, CA 91203

Web: bhg.us.com

Sales: oganes@bhg.us.com

Service: support@bhg.us.com



hydraBOND.com

hydraBOND®

WELDING

HB71-HB72

NDT Test System.

TDS

hydraBOND® HB71 Step1 • TDS • v.02 • Issued Oct. 2022 • Index No. 0001 • UPC: 767787958947
hydraBOND® HB72 Step2 • TDS • v.02 • Issued Oct. 2022 • Index No. 0001 • UPC: 767787958954

CHARACTERISTICS AND ADVANTAGES

- Removable with water and solvents.
- Quick cleaning saving time and water.
- Very low consumption due to his low viscosity.
- Sulphides free and halogenated according to international ranges Sensitivity level 2

MEETS THESE SPECIFICATIONS:

- ✓ EN571
- ✓ EN ISO 3452-1
- ✓ EN ISO 3452-2
- ✓ ASTM E1417
- ✓ AMS 2644 -ASTM E-165 A4
- ✓ ASME SEC V Art 6, T641
- ✓ REACH.

DESCRIPTION

NDT Test System

hydraBOND® HB71_Step1, it's a red penetrating spray developed for welding inspections, foundry pieces, forges, and all kinds of metallurgical applications.

hydraBOND® HB72_Step2, it's a White Solvent Based Developer it's a White developer liquid spray developed for welding inspections, foundry pieces, forges, and all kinds of metallurgical applications

Quick Specs

USE AN ENVIRONMENTALLY SAFE AND FAST EVAPORATING CLEANER, TO PRE-CLEAN BEFORE TESTING.

NOTE 1° Part precleaning prior to the penetrant exam is required to eliminate nonrelevant indications.

NOTE 2° After testing, remove the penetrant and developer by flushing the surface with cleaner as needed. If a painting of the surface is required, seal it with primer before painting.

1°.-PRE-CLEANING..

The test surface is cleaned to remove any dirt, paint, oil, grease, or any loose scale that could either keep penetrant out of a defect or cause irrelevant or false indications. The surface to inspect must be perfectly clean and free of any kind of residue, grease, oil, paints, oxide, etc.

2°.- hydraBOND® HB71_Step1, RED PENETRATING APPLICATION

Apply red penetrating on the area to inspect with a soft layer of spray, a brush, or an impregnated duster. We recommend a penetrating time between 10-20 minutes; this will depend on ambient temperature. After this time, hydraBOND® HB71_Step1 has penetrated leaks and pores.

3°.- hydraBOND® HB71_Step1, RED PENETRATING EXCESS REMOVAL

Red penetrating excess will be removed with a duster or with low-pressure water. Let it dry at ambient temperature or with hot air (maximum at 70°C).

4°.- hydraBOND® HB72_Step2 WHITE DEVELOPER APPLICATION

Apply a thin layer of white developer spray, thanks to his special formula drying will be very quick, and defect will appear on surfaces in dark red color: leaks in red lines and pores as red spots.



FORMAT: Spray Can



FORMAT: Spray Can



BHG Import Export Inc.

Glendale, CA 91203

Web: bhg.us.com

Sales: oganes@bhg.us.com

Service: support@bhg.us.com



hydraBOND.com



⚠ WARNING: This product can expose you to chemicals, which are known to the State of California to cause cancer and birth defects or other reproductive harm. For more information, go to www.P65Warnings.ca.gov. Please consult the Safety Data Sheet. It is strongly recommended to use appropriate personal protective equipment during application.

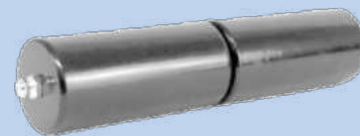


HB1420

38X203 1.49" x 7.99" 8"x1.5"

Steel Welding Hinge, With Grease Nipper

Steel+Brass+reseeded Thrust ball Bearing+without paint



Bullet Hinge W/Zerk Grease Fitting Steel Body & Pin, Brass Bushing

Overview

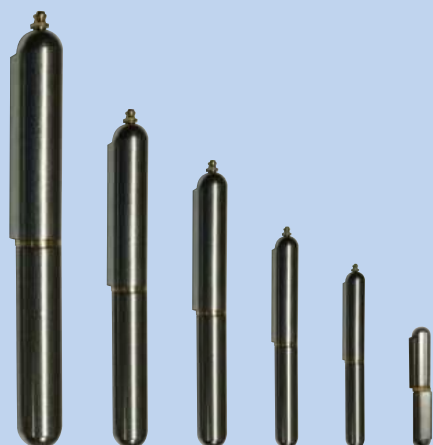
This two piece weld-on hinge is extremely popular because of its high weight capacity as well as its professional appearance.

Ideal for gates, machinery doors, barbecue pits, electrical boxes, and trailers.

It can be welded on as a lift-off hinge or it can be permanently mounted.

Made from mild steel (1015) with a case hardened fixed steep pin and a brass washer.

W/Zerk Grease fitting for easy lubrication.



HB1411 2" Bullet Hinge W/Out Grease Fitting Steel Body & Pin, Brass Bushing

HB1413 3" Bullet Hinge W/Zerk Grease Fitting Steel Body & Pin, Brass Bushing

HB1414 4" Bullet Hinge W/Zerk Grease Fitting Steel Body & Pin, Brass Bushing

HB1415 5" Bullet Hinge W/Zerk Grease Fitting Steel Body & Pin, Brass Bushing

HB1416 6" Bullet Hinge W/Zerk Grease Fitting Steel Body & Pin, Brass Bushing

HB1417 8" Bullet Hinge W/Zerk Grease Fitting Steel Body & Pin, Brass Bushing

TECHNICAL-DATA ON WELD ON HINGES WEIGHT CAPACITY

PART#	HINGE SIZE METRIC:	SIZE IN INCHES	DESCRIPTION:	QTY/ CARTON	BASE MATERIAL	MATERIAL THICKNESS INCHES	MATERIAL THICKNESS MM	FINISH	PIN DIA. INCHES	PIN DIA. MM	MAX CAPACITY LBS	MAX CAPACITY KGS
HB1411	8X50	0.32" X 1.97"	2" WELDING HINGE WITHOUT GREASE NIPPER STEEL+BRASS BARREL	500	STEEL	0.38	9.652	MILL	0.197	5.0038	101.413	46
HB1413	13X80	0.52" X 3.15"	3" WELDING HINGE WITH GREASE NIPPER STEEL+BRASS BARREL	250	STEEL	0.46	11.68	MILL	0.24	5.99	180.78	82
HB1414	16X100	0.63" X 3.94"	4" WELDING HINGE WITH GREASE NIPPER STEEL+BRASS BARREL	125	STEEL	0.77	19.56	MILL	0.39	10.01	308.65	140
HB1415	20X127	0.79" X 5"	5" WELDING HINGE WITH 6" THICKNESS WITH GREASE NIPPER STEEL+BRASS BARREL	60	STEEL	0.90	22.86	MILL	0.50	12.70	413.15	187.4
HB1416	20X150	0.79" X 5.91"	6" WELDING HINGE WITH GREASE NIPPER STEEL+BRASS BARREL	50	STEEL	1.00	25.40	MILL	0.50	12.70	559.97	254
HB1417	23X200	0.99" X 7.87"	8" WELDING HINGE WITH GREASE NIPPER STEEL+BRASS BARREL	30	STEEL	1.13	28.70	MILL	0.63	15.88	954.60	433
HB1420	38X203	1.49" X 7.99"	8" STEEL WELDING HINGE, WITH GREASE NIPPER STEEL+BRASS+RESEEDED THRUST BALL BEARING+WITHOUT PAINT	12	STEEL	1.46	37.08	MILL	0.75	19.05	1014.13	460



Didn't find what you need?

We'll find it for you!

Scan QR Code to reach your sales representative...



ER70S-6 MIG WELDING WIRE



Product Details

Item Details hydraBOND® ER70S-6 is a mild steel solid filler wire containing a high combined total of manganese and silicon. The wire produces a smooth, uniform welding arc, which minimizes weld spatter and results in excellent bead appearance and high operator appeal. The excellent operating characteristics of hydraBOND® ER70S-6 appeal to users seeking better performance in their hydraBOND® ER70S-6 applications.

.Key Features

- » hydraBOND® ER70S-6 provides the ultimate in flexibility to support your GMAW operations
- » Cast of 35" (.88m) to 55" (1.3m) and Helix below 1" (25.4mm) improve feedability and provide accurate wire positioning
- » Higher Silicon content reduces the molten metal surface tension, resulting in flatter bead profiles
- » Manufactured according to ISO9001:2008 quality standards
- » Excellent arc starts, arc stability and feedability
- » Minimal spatter
- » No copper flaking
- » High level de-oxidizers
- » Excellent weld appearance and post weld cleaningApplications
- » Well-suited for all metal transfer modes of GMAW» Robotic, mechanized or semi-automatic welding
- » Welding steel with mill scale, rust or oil» Used for single and multi-pass weldments
- » Applications requiring yield strengths greater than 50,000 psi

AWS Classification » ER70S-6, » ER70S-3

Package » Drum, » Spool

HB6001 ER70S-6 0.023" 2.2 LBS

HB6002 ER70S-6 0.023" 11 LBS

HB6003 ER70S-6 0.023" 33 LBS

HB6004 ER70S-6 0.030" 2.2 LBS

HB6005 ER70S-6 0.030" 11 LBS

HB6006 ER70S-6 0.030" 33 LBS

HB6007 ER70S-6 0.035" 2.2 LBS

HB6008 ER70S-6 0.035" 11 LBS

HB6009 ER70S-6 0.035" 33 LBS

HB6010 ER70S-6 0.035" 550 LBS

HB6011 ER70S-6 0.045" 33 LBS

HB6012 ER70S-6 0.045" 550 LBS

HB6053 ER70S-6 0.035" 33 LBS WHITE BOX

HB6053B ER70S-6 0.035" 30 LBS WHITE BOX



ER70S-3 MIG WELDING WIRE

COPPER COATED LOW CARBON ALL POSITIONAL MIG WELDING WIRE

HB6009B ER70S-3 0.035" 33 LBS



AWS A5.20 E71T-GS

FLUX CORE MIG WELDING WIRE



Key Features

Alternate Standard: AWS/ASME-SFA A5.20

Brand: hydraBOND®

Alternate Classification: E71T-GS

Arc Welding Equipment Type: hydraBOND® E71T-GS

Standard: AS/NZS ISO 17632

Classification: B T 49 Z TG-1 N /A-H15

- HB6200** FLUX CORE WIRE AWS A5.20 E71T-GS DIA: 0.030 2LB
- HB6201** FLUX CORE WIRE AWS A5.20 E71T-GS DIA: 0.030 11LB
- HB6202** FLUX CORE WIRE AWS A5.20 E71T-GS DIA: 0.035 2LB
- HB6203** FLUX CORE WIRE AWS A5.20 E71T-GS DIA: 0.035 11LB

STAINLESS STEEL WELDING WIRE

ER308L SPOOL, STAINLESS STEEL WELDING WIRE

- HB6400** STAINLESS STEEL 308L 0.030" 2.2 LBS
- HB6401** STAINLESS STEEL 308L 0.030" 11 LBS
- HB6402** STAINLESS STEEL 308L 0.035" 2.2 LBS
- HB6403** STAINLESS STEEL 308L 0.035" 11 LBS
- HB6404** STAINLESS STEEL 308L 0.035" 11 LBS

ER308L 36" CUT LENGTHS STAINLESS STEEL TIG WIRE

- HB6405** STAINLESS STEEL 308L 0.045"X36" 11 LBS TIG WIRE
- HB6406** STAINLESS STEEL 308L 1/16"X36" 11 LBS TIG WIRE
- HB6407** STAINLESS STEEL 308L 3/32"X36" 11 LBS TIG WIRE
- HB6408** STAINLESS STEEL 308L 1/8"X36" 11 LBS TIG WIRE

ER316L SPOOL, STAINLESS STEEL WELDING WIRE

- HB6409** STAINLESS STEEL WELDING WIRE 316L 0.030" 2.2 LBS
- HB6410** STAINLESS STEEL WELDING WIRE 316L 0.030" 11 LBS
- HB6411** STAINLESS STEEL WELDING WIRE 316L 0.035" 11 LBS
- HB6412** STAINLESS STEEL WELDING WIRE 316L 0.035" 33 LBS
- HB6413** STAINLESS STEEL WELDING WIRE 316L 0.045" 33 LBS

ER316L 36" CUT LENGTHS STAINLESS STEEL TIG WIRE

- HB6414** STAINLESS STEEL 316L 0.045"X36" 11 LBS TIG WIRE
- HB6415** STAINLESS STEEL 316L 1/16"X36" 11 LBS TIG WIRE
- HB6416** STAINLESS STEEL 316L 3/32"X36" 11 LBS TIG WIRE
- HB6417** STAINLESS STEEL 316L 1/8"X36" 11 LBS TIG WIRE

ER4043, ER5356 ALUMINUM MIG WELDING WIRE

ER4043 SPOOL, ALUMINUM MIG WELDING WIRE

- HB6299** ALUMINUM WIRE ER4043 0.030" 1.1 LBS
- HB6300** ALUMINUM WIRE ER4043 0.035" 1.1 LBS
- HB6301** ALUMINUM WIRE ER4043 0.035" 2.2 LBS
- HB6302** ALUMINUM WIRE ER4043 0.035" 11 LBS
- HB6303** ALUMINUM WIRE ER4043 0.035" 16 LBS
- HB6304** ALUMINUM WIRE ER4043 0.045" 1.1 LBS
- HB6305** ALUMINUM WIRE ER4043 0.045" 2.2 LBS
- HB6306** ALUMINUM WIRE ER4043 0.045" 11 LBS
- HB6307** ALUMINUM WIRE ER4043 0.045" 16LBS

ER4043 36" CUT LENGTHS ALUMINUM TIG

- HB6308** ALUMINUM CUT LENGTHS TIG WIRE ER4043 1/16"X36" 11 LBS
- HB6309** ALUMINUM CUT LENGTHS TIG WIRE ER4043 3/32"X36" 11 LBS
- HB6310** ALUMINUM CUT LENGTHS TIG WIRE ER4043 1/8"X36" 11 LBS

ER5356 SPOOL, ALUMINUM MIG WELDING WIRE

- HB6311** ALUMINUM WIRE ER5356 0.030" 1.1 LBS
- HB6312** ALUMINUM WIRE ER5356 0.035" 16 LBS
- HB6313** ALUMINUM WIRE ER5356 0.045" 1.1 LBS
- HB6314** ALUMINUM WIRE ER5356 0.045" 16 LBS

ER5356 36" CUT LENGTHS ALUMINUM TIG

- HB6320** ALUMINUM CUT LENGTHS TIG WIRE ER5356 1/16"X36" 11 LBS
- HB6321** ALUMINUM CUT LENGTHS TIG WIRE ER5356 3/32"X36" 11 LBS
- HB6322** ALUMINUM CUT LENGTHS TIG WIRE ER5356 1/8"X36" 11 LBS



Didn't find what you need?

We'll find it for you!

Scan QR Code to reach your sales representative...

CONTACT TIPS FOR MIG GUNS

11 SERIES CONTACT TIPS

- HB1000** TWECO® 11 SERIES 11-23 Standard Duty Contact Tips
- HB1001** TWECO® 11 SERIES 11-30 Standard Duty Contact Tips
- HB1002** TWECO® 11 SERIES 11-35 Standard Duty Contact Tips

T SERIES CONTACT TIPS

- HB1003** BERNARD™ MODEL T-035-.035" CENTERFIRE™ T SERIES FOR Q-GUN™ DURA-FLUX™ SERIES MIG GUNS
- HB1004** BERNARD™ MODEL T-045 .045" CENTERFIRE™ T SERIES FOR Q-GUN™ DURA-FLUX™ SERIES MIG GUNS

14 SERIES CONTACT TIPS

- HB1005** 14-23 .023 CONTACT TIPS FOR 200 - 400A TWECO® NO. 2, NO. 3, NO. 4 MIG GUNS
- HB1006** 14-30 .030 CONTACT TIPS FOR 200 - 400A TWECO® NO. 2, NO. 3, NO. 4 MIG GUNS
- HB1007** 14-35 .035 CONTACT TIPS FOR 200 - 400A TWECO® NO. 2, NO. 3, NO. 4 MIG GUNS
- HB1008** 14-45 .045 CONTACT TIPS FOR 200 - 400A TWECO® NO. 2, NO. 3, NO. 4 MIG GUNS

LINCOLN® CONTACT TIPS

- HB1009** MODEL KP2103-1B1 CONTACT TIP FOR .068 - .072" K126™ MIG GUNS

MILLER® FAST TIPS CONTACT TIPS

- HB1010** FOR MILLER® MODEL 206187 .035 - .040" HEAVY DUTY FOR SPOOLMATIC®, XR™ AND XR™-EDGE SERIES MIG GUNS
- HB1011** FOR MILLER® MODEL 206189 .052" HEAVY DUTY FOR XR™ AND XR™-EDGE SERIES MIG GUNS

MILLER® CONTACT TIPS

- HB1012** MODEL 087299 .023" CONTACT TIP FOR 150 - 400A TWECO® NO. 2, NO. 3, NO. 4 MIG GUNS
- HB1013** MODEL 000067 .030" CONTACT TIP FOR 150 - 400A TWECO® NO. 2, NO. 3, NO. 4 MIG GUNS
- HB1014** MODEL 000068 .035" CONTACT TIP FOR 150 - 400A TWECO® NO. 2, NO. 3, NO. 4 MIG GUNS
- HB1015** MODEL 000069 .045" CONTACT TIP FOR 150 - 400A TWECO® NO. 2, NO. 3, NO. 4 MIG GUNS

GAS DIFFUSERS FOR MIG GUNS

Bernard™ DS-1 GAS DIFFUSER

- HB1212** BERNARD™ SMALL CENTERFIRE GAS DIFFUSER (DS-1)

Bernard™ D-1 GAS DIFFUSER

- HB1200** BERNARD™ MODEL D-1 LARGE GAS DIFFUSER FOR CENTERFIRE™, Q-GUN™ AND EZ FEED SERIES MIG GUNS

Bernard™ GAS DIFFUSER

- HB1201** BERNARD @ 4335 GAS DIFFUSER HEAD ASSEMBLY FOR 200 - 300A SERIES MIG GUNS

Miller® HEAVY DUTY GAS DIFFUSER

- HB1202** MILLER® MODEL 206195 HEAVY DUTY GAS DIFFUSER FOR ROUGHNECK® C-SERIES MIG GUNS

Miller® TIP ADAPTER GAS DIFFUSER

- HB1203** TIP ADAPTER: 169716 REPLACEMENT PARTS FOR M10S, M15 MILLER® MIG GUN

Miller® TIP ADAPTER GAS DIFFUSER

- HB1204** 169728 ADAPTER TIP HOLDER, REPLACEMENT PARTS FOR MILLER®: M25 & M40 H Series MIG GUNS

Hobart® TIP ADAPTER GAS DIFFUSER

- HB1205** MILLER® MODEL 169729 NOZZLE ADAPTER FOR M-25 MIG GUNS

Teweco® WS32

- HB1500** TWECO® WS32 NOZZLE INSULATOR FOR WS32 AND WELDSKILL® SERIES MIG GUNS

Teweco® 34A

- HB1501** TWECO® 34A ADJUSTABLE SLIP-ON NOZZLE INSULATOR FOR UP TO 400A NO. 4 AND 24 SERIES MIG GUNS

51 GAS DIFFUSER

- HB1206** 51 STANDARD DUTY GAS DIFFUSER FOR UP TO 180A NO. 1 SERIES MIG GUNS

52 GAS DIFFUSER

- HB1207** 52 1.990" STANDARD DUTY GAS DIFFUSER FOR UP TO 250A TWECO® NO. 2 AND RADNOR® PRO SERIES MIG GUNS

52FN GAS DIFFUSER

- HB1208** 52FN GAS DIFFUSER FOR UP TO 450A TWECO® AND RADNOR® PRO SERIES MIG GUNS

52A GAS DIFFUSER

- HB1209** 54A 1.250" GAS DIFFUSER FOR UP TO 450A TWECO® NO. 3 AND NO. 4 SERIES MIG GUNS

35-50 GAS DIFFUSER

- HB1210** 35-50 1.714" STANDARD DUTY GAS DIFFUSER FOR UP TO 200A TWECO®, RADNOR® PRO AND TWECO® MINI-MIG-GUN® SERIES MIG GUNS

15AK GAS DIFFUSER

- HB1211** 002.0078 BINZEL STYLE 15AK TIP HOLDER / GAS NOZZLE HOLDER MIG WELDING TORCH

MIG Guns, CONSUMABLES, NOZZLES

CONSUMABLES CUTTING TORCHES

HB1300

- Bernard® N-5818C**
N-5818C LARGE NOZZLE FOR BERNARD™ CENTERFIRE™ & Q-GUN™ SERIES MIG GUNS

HB1301

- Teweco® 22-62**
22-62 2.100" ADJUSTABLE NOZZLE FOR UP TO 250A TWECO® NO. 2 AND RADNOR® PRO SERIES MIG GUNS

HB1303

- Binzel® M8 15 AK**
1145.0075 145.0075 2" SLIP-ON NOZZLE FOR UP TO 180A BINZEL® ALPHA 1™ SERIES MIG GUNS

HB1304

- Bernard® 4392**
4392 Heavy Duty Insulated Tapered Nozzle For 150 - 600A Q-Gun™ And S-Gun™ Series MIG GUNS NOZZLE .5" FOR BERNARD® MIG GUNS

HB1305

- Miller® 198855**
198855 Screw-On Nozzle For 300 - 400A XR™-A, Alum-Pro Lite Series MIG GUNS

HB1306

- Teweco® 23-62**
23-62 3.219" SELF-INSULATED NOZZLE FOR 250 - 450A TWECO® AND RADNOR® PRO SERIES MIG GUNS

HB1307

- Teweco® 24A-62**
24A-62 3.420" ADJUSTABLE NOZZLE FOR UP TO 450A TWECO® NO. 4 SERIES MIG GUNS

HB1308

- Teweco® 22-50**
22-50 2.100" ADJUSTABLE NOZZLE FOR UP TO 250A TWECO® NO. 2 AND RADNOR® PRO SERIES MIG GUNS

HB1309

- Miller® 169715**
169715 SLIP NOZZLE FOR UP TO 150A MIGMATIC™ M-15, 135 AND HOBART® H SERIES MIG GUNS

HB1310

- Miller® 169724**
169724 SLIP NOZZLE FOR UP TO 150A MIGMATIC™ M-15, 135 AND HOBART® H SERIES MIG GUNS

HB1311

- 169725 2.625" SLIP NOZZLE FOR 150 - 400A MIGMATIC™ M-25, M-40 AND HOBART® H SERIES MIG GUNS**

HB1312

- Teweco® 21-50**
21-50 2.068" SELF-INSULATED NOZZLE FOR UP TO 180A TWECO® MINI-MIG-GUN® SERIES MIG GUNS

HB1313

- Spring NOZZLE RETAINER**
Spring Nozzle Retainer For MB Ergo 15 AK, MB Grip 15 AK MIG/MAG Welding Torches And RAB Plus 15 AK MIG/MAG Fume Extraction Torches



OXI FUEL CUTTING CONSUMABLES CUTTING TORCHES

HB6700

- VICTOR® 101-1 SIZE 0.312 ONE PIECE ACETYLENE INTERNAL CUTTING TIP 1-1-101

HB6701

- VICTOR® 1-101 SIZE 2 ONE PIECE ACETYLENE CUTTING TIP 2-1-101

HB6702

- VICTOR® 1-101 SIZE 3 ONE PIECE ACETYLENE PROFESSIONAL CUTTING TIP 3-1-101



REGULATOR, CGA-320

HB6719

- MEDIUM DUTY CARBON DIOXIDE FLOW-METER REGULATOR



REGULATOR, CGA-580

HB6720

- MEDIUM DUTY ARGON/CO2 FLOW-METER REGULATOR



3-101 2341 VICTOR® STYLE

HB6705

- ACETYLENE, 0-3-101 SIZE 0 CUTTING TIPS FOR: VICTOR®

HB6706

- ACETYLENE, 1-3-101 SIZE 1 CUTTING TIPS FOR: VICTOR®

HB6707

- ACETYLENE, 2-3-101 SIZE 2 CUTTING TIPS FOR: VICTOR®



Propane or Natural Gas GPN 2355 VICTOR® STYLE

HB6708

- PROPANE OR NATURAL GAS, GPN1 SIZE 1 CUTTING TIPS FOR: VICTOR®

HB6709

- PROPANE OR NATURAL GAS, GPN2 SIZE 2 CUTTING TIPS FOR: VICTOR®

HB6710

- CUTTING, PROPANE OR-OXYGEN NATURAL GAS, GPN3 SIZE 3 CUTTING TIPS FOR: VICTOR®



6290 1360 HARRIS® STYLE

HB6711

- ACETYLENE-OXYGEN 6290-0 SIZE 0 CUTTING TIPS FOR: HARRIS®

HB6712

- ACETYLENE-OXYGEN 6290-1 SIZE 1 CUTTING TIPS FOR: HARRIS®

HB6713

- ACETYLENE-OXYGEN, 6290-2 SIZE 2 CUTTING TIPS FOR: HARRIS®



Propane or Natural Gas 6290-NX SERIES® STYLE

HB6714

- PROPANE OR NATURAL GAS 6290-NX-0 SIZE 0 CUTTING TIPS FOR: HARRIS®

HB6715

- PROPANE OR NATURAL GAS 6290-NX-1 SIZE 1 CUTTING TIPS FOR: HARRIS®

HB6716

- PROPANE OR NATURAL GAS 6290-NX-2 SIZE 2 CUTTING TIPS FOR: HARRIS®

⚠ WARNING: This product can expose you to chemicals, which are known to the State of California to cause cancer and birth defects or other reproductive harm. For more information, go to www.P65Warnings.ca.gov. Please consult the Safety Data Sheet. It is strongly recommended to use appropriate personal protective equipment during application.

hydraBOND®

WELDING SUPPLIES & ACCESSORIES



Didn't find what you need?

We'll find it for you!

Scan QR Code to reach your sales representative...

HB6502

K126

ONE-PIECE K126-2 LINCOLN® STYLE, FLUX CORE, CLASSIC SELF-SHIELDED SEMIAUTOMATIC GUN 350A, 15 FT



HB6510

TWECO® STYLE 130
250T035045-15 TWECO® STYLE 250 AMP AIR COOLED MIG GUN TWECO® STYLE CONNECTOR 15 FT

HB6511

130T030045-10 TWECO® STYLE 130 – 190 AMP AIR COOLED MIG GUN TWECO® STYLE CONNECTOR 10 FT

HB6512

130T030045-15 TWECO® STYLE 130 – 190 AMP AIR COOLED MIG GUN TWECO® STYLE CONNECTOR 15 FT



HB6513

TWECO® STYLE 130
130M03045-10 TWECO® STYLE 130 – 190 AMP AIR COOLED MIG GUN MILLER® STYLE CONNECTOR 10 FT

HB6514

130M03045-15 TWECO® STYLE 130 – 190 AMP AIR COOLED MIG GUN MILLER® STYLE CONNECTOR 15 FT

HB6515

250M03045-15 TWECO® STYLE 130 – 190 & 250 AMP AIR COOLED MIG GUN MILLER® STYLE CONNECTOR 15 FT



XL Binzel 15AK AIR COOLED MIG GUN with Flexible goose-neck

HB6519 15AK, 4.5M CABLES, WITH FLEXIBLE GOOSE-NECK MILLER BACK-END

HB6520 15AK, 4.5M CABLES, WITH FLEXIBLE GOOSE-NECK TWECO BACK-END

HB6521 15AK, 3M CABLES, WITH FLEXIBLE GOOSE-NECK MILLER BACK-END

HB6522 15AK, 3M CABLES, WITH FLEXIBLE GOOSE-NECK TWECO BACK-END



XL Binzel 15AK AIR COOLED MIG GUN with Regular goose-neck

HB6523 15AK, 4.5M CABLES, WITH REGULAR GOOSE-NECK MILLER BACK-END

HB6524 15AK, 4.5M CABLES, WITH REGULAR GOOSE-NECK TWECO BACK-END

HB6525 15AK, 3M CABLES, WITH REGULAR GOOSE-NECK MILLER BACK-END

HB6526 15AK, 3M CABLES, WITH REGULAR GOOSE-NECK TWECO BACK-END



TIG CONSUMABLES



WP-20-25

HB6509 WP-20-25 WP-20 WATER COOLED TIG TORCH KIT, ANGLED HEAD, 3/4" HANDLE, 25 FT VINYL CABLE

220819

HB220819 85 65 Amp Drag Cutting Nozzle
Replacement for Hypertherm® 220819 85 65 Amp Drag Cutting Nozzle (Bulk Pack 5 Pieces)



9-8407

HB9-8407 Air/Nitrogen Electrode
Replacement for Thermal Dynamics® Model 9-8407 Air/Nitrogen Electrode For MaximumLife™ PCM-62/102/PCM-62/102 Plasma Torch (Bulk Pack 10 Pieces)



9-8212

HB9-8212 90 – 100 Amp Cutting Tip
Replacement for Thermal Dynamics® Model 9-8212, 90 – 100 Amp Cutting Tip For SL60/100 Plasma Torch (Bulk Pack 5 Pieces)



57YBACK CUPS

HB1514 BACK CAP, LONG STYLE 57Y02

HB1515 BACK CAP, MEDIUM STYLE 57Y03

HB1516 BACK CAP, SHORT STYLE 57Y04



13N29COLLET BODY

HB1517 13N27 1/16" COLLET BODY FOR PRO-TORCH™ PTA-9 AND PTW-20 TORCHES

HB1518 13N28 3/32" COLLET BODY FOR PRO-TORCH™ PTA-9 AND PTW-20 TORCHES

HB1519 13N29 1/8" COLLET BODY FOR PRO-TORCH™ PTA-9 AND PTW-20 TORCHES



13NGAS LENS SERIES COLLET BODY

HB1520 13N22 1/16" COLLET FOR PRO-TORCH™ PTA-9 AND PTW-20 TORCHES

HB1521 13N23 3/32" COLLET FOR PRO-TORCH™ PTA-9 AND PTW-20 TORCHES

HB1522 13N24 1/8" COLLET FOR PRO-TORCH™ PTA-9 AND PTW-20 TORCHES



TIG TORCH ADAPTER BLOCK

HB1523 BRASS WATER POWER CABLE ADAPTER FOR WATER COOLED WP-18, WP-18V, WP-20, WP-24W, WP-25 AND WP-12 TORCH



HB6725 1C008-0109 ARGON FLOWMETER SET CGA580 Series Flow Gauge Regulator, 0 to 50 psi, Argon, Carbon Dioxide



WP-20-25

HB6509 WP-20-25 WP-20 WATER COOLED TIG TORCH KIT, ANGLED HEAD, 3/4" HANDLE, 25 FT VINYL CABLE

220842

HB220842 Electrode
Replacement for Hypertherm® 220842 65 And 85 Electrode (Bulk Pack 5 Pieces)



9-7726

HB9-7726 60 Amp Air Tip With .049" Orifice
Replacement for Thermal Dynamics® Model 9-7726 60 Amp Air Tip With .049" Orifice For PCM-102/PCM-102 Plasma Torch (Bulk Pack 5 Pieces)



9-8215

HB9-8215 30 – 120 Amp Electrode
Replacement for Thermal Dynamics® Model 9-8215 30 – 120 Amp Electrode For SL60/100 Plasma Torch (Bulk Pack 5 Pieces)



41VBACK CUPS

HB1511 BACK CAP, LONG STYLE 41V24

HB1512 BACK CAP, SHORT STYLE 41V33

HB1513 BACK CAP, MEDIUM STYLE 41V35



2% THORIATED TUNGSTEN

HB1508 1/16" X 7" GROUND FINISH 2% THORIATED TUNGSTEN

HB1509 3/32" X 7" GROUND FINISH 2% THORIATED TUNGSTEN

HB1510 1/8" X 7" GROUND FINISH 2% THORIATED TUNGSTEN

ELECTRODE 10 PER PACKAGE



STANDARD ALUMINA CERAMIC CUPS

HB1502 #4 1/4" NOZZLE STANDARD ALUMINA CERAMIC 13N08

HB1503 #5 NOZZLE 5/16" STANDARD ALUMINA CERAMIC 13N09

HB1504 #6 NOZZLE 3/8" STANDARD ALUMINA CERAMIC 13N10

HB1505 #7 NOZZLE 7/16" STANDARD ALUMINA CERAMIC 13N11

HB1506 #8 NOZZLE 1/2" STANDARD ALUMINA CERAMIC 13N12

HB1507 #7 NOZZLE 7/16" SMALL ALUMINA GAS LENS TIG 53N61



HB6723 1C008-0097 ARGON GAUGE REGULATOR, 0 TO 50 PSI, ARGON, CARBON DIOXIDE

⚠ WARNING: This product can expose you to chemicals, which are known to the State of California to cause cancer and birth defects or other reproductive harm. For more information, go to www.P65Warnings.ca.gov. Please consult the Safety Data Sheet. It is strongly recommended to use appropriate personal protective equipment during application.



Didn't find what you need?

We'll find it for you!

Scan QR Code to reach your sales representative...

MMA ACCESSORIES SAFETY GROUND CLAMPS AND LINERS



HB2000 (PFC) MULTI PROCESS

4-IN-1 MULTI-FUNCTION WELDING, MACHINE.
200-AMP (MIG, LIFT-TIG, MMA) STICK, WORKS
ON 110V, 220V) AT ONLY 33 LBS



MMA ACCESSORIES & GROUND CLAMPS

- HB3003** 250A STINGER ELECTRODE HOLDER 10 FT CABLE 50MM DINSE CONNECTOR
- HB3004** 200A GROUND CLAMP 10F 3 METER WITH 50MM DINSE CONNECTOR
- HB3005** 300A GROUND CLAMP 15 F 5 METER WITH 50MM DINSE CONNECTION

GROUND CLAMPS

- HB3000** MODEL EG-300 300 AMP STEEL GROUND CLAMP
- HB3001** MODEL EG-400 400 AMP STEEL GROUND CLAMP
- HB3002** MODEL EG-500 500 AMP STEEL GROUND CLAMP



HR-20440 Amphenol 2 Prong Plug.

HB1400 CONTROL PLUGS & LEADS SWITCH ASSEMBLY HR-20440 SUITABLE FOR: LINCOLN ELECTRIC ® & MILLER®



HB2020-A MULTI PURPOSE WELDER CART

MULTI PURPOSE WELDER CARTS, RUST PROOF POWER COATED ORANGE



CONDUIT LINERS

- HB1402** 35'-40'-15' 0.030" - 0.035" X 15' CONDUIT LINER FOR 160A MINI-MIG-GUN®, ELIMINATOR® AND SPRAY MASTER® SERIES MIG GUNS
- HB1403** 45'-40'-15' 0.040" - 0.045" X 15' LINER FOR USE WITH TWECO® MINI-MIG-GUN® AND RADNOR® PRO MIG GUNS
- HB1404** 42'-3035'-15' 0.030" - 0.035" X 15' UNIVERSAL CONDUIT LINER FOR 180 - 250A NO. 1 AND NO. 2 SERIES MIG GUNS
- HB1405** 42'-3545'-15' UNIVERSAL CONDUIT LINER 180-250A 0.035 - 0.045 15' STEEL WOUND FOR STEEL WIRE
- HB1406** 194012 0.035" - 0.045" X 15' LINER FOR USE WITH 150 - 400 AMP MIGMATIC™ M-15, MIGMATIC™ M25 AND MIGMATIC™ M-40 MIG GUNS

(PPE) PERSONAL PROTECTIVE EQUIPMENT

Yellow Header Safety Mask

HB6175 Yellow Header Safety Mask PC and PVC face shields are armed with the reinforced aluminum barrim, 24 PCS/CARTON 59x38x56cm G.W/18 KG F-003



Transparent Header Safety Mask

HB6176 Transparent Header Safety Mask PC and PVC face shields are armed with the reinforced aluminum barrim, 40 PCS/CTN G.W 14kg 48x43.5x49.5cm F-102



Simple Dust Mask

HB6178 Simple Dust Mask 1000 PCS/CTN 65x27x43cm G.W 7kg PED4001EC



Splash-Proof Safety Goggle

HB6177 Splash-Proof Safety Goggle YELLOW 200 PCS/CTN G.W 12kg 48x32x50cm PEF-3003B



HB1408

AP-1210 XL Golden Standard Split Cowhide Stick Welding Gloves with CE EN12477



Dust Mask With Breather Valve

HB6179 Dust Mask with breather Valve unidirectional exhalation function of "only out" 1000 PCS/CTN G.W 8kg 65x27x63cm PED4004C



HB1409

AP-1510 XL Grey patched palm working gloves Heavy Duty, with CE EN388



HB1410

AP-1516 XL Golden full palm working gloves with CE EN388



TOOLS AND SLAG REMOVAL ACCESSORIES



HB6901

HEAD GEAR SET FITS ITEM# HB2019, 3-PIECE COMPATIBLE MILLER WELDING HELMET REPLACEMENT HEADGEAR



HB6902

WELDING HELMET REPLACEMENT LENS KIT — FITS ITEM# HB2019, 3-PIECE



HB6903

OXY ACETYLENE FUEL GAS SINGLE STRIKER FLINT STRIKER • CYLINDRICAL FILE • WITH SAFETY STOPPER



HB6909

TIP CLEANER LONG SET, (CLEANS HOLE UP TO .041" - .042" AND NO 59 -58 DRILL



HB6904

OXY ACETYLENE FUEL GAS SINGLE STRIKER TRIPLE FLINT STRIKER • SQUARE FILE • WITH SAFETY STOPPER



HB6905

OXY ACETYLENE FUEL GAS SINGLE STRIKER TRIPLE FLINT STRIKER • SQUARE FILE • WITH SAFETY STOPPER



HB6906

WELDER'S PLIERS BLUE HANDLE HIGH QUALITY MULTI-PURPOSE 8 WAY MIG PLIERS



HB6907

FORGED STEEL STANDARD CHIPPING HAMMER WITH 10 1/2" FLEX-O STEEL COIL HAND GRIP HANDLE AND 6 1/2" CONE AND CHISEL HEAD



HB6908

TIP CLEANER SMALL SET, (CLEANS HOLE UP TO .041" - .042" AND NO 59 -58 DRILL



TOOLS AND ABRASIVES

Didn't find what you need?
We'll find it for you!

Scan QR Code

to reach your sales representative...

CUT-OFF WHEELS



T41 REINFORCED FOR ALL METALS

HB6150 14" T41 REINFORCED CUTTING WHEEL FOR ALL METAL. 14"x1/8"x1" MAX R.P.M 3900

T41 REINFORCED FOR STAINLESS STEEL

- HB6151** 5" T41 REINFORCED CUTTING WHEEL FOR CUTTING STAINLESS STEEL. 5"x3/64"x7/8" MAX R.P. 11000
- HB6152** 6" T41 REINFORCED CUTTING WHEEL FOR CUTTING STAINLESS STEEL. 6"x1/16"x7/8" MAX R.P.M 9100
- HB6153** 7" T41 REINFORCED CUTTING WHEEL FOR CUTTING STAINLESS STEEL. 7"x1/16"x7/8" MAX R.P.M 7600



- HB6164** 5x1/24x7/8 125x1x22.2 CUTTING WHEEL PACKING: 50PCS/BOX FOR METAL, T41,80M/S, 2 NETS, TOP 400PCS/CTN QUALITY, PEGATEC BRAND. P80411251M
- HB6165** 6x1/24x7/8 150x1.2x22.2 CUTTING WHEEL FOR METAL, T41, 80M/S, 2 NETS, TOP QUALITY, PEGATEC BRAND PACKING: 60PCS/BOX 480PCS/CTN. P804115012M
- HB6167** 56x1/16x7/8 150x1.6x22.2 SUPER THIN CUTTING WHEEL FOR ALL-IN- ONE,T41, 80M/S, 2 NETS, QUALITY, SCISSORSHAND SPC804115016
- HB6168** 6x1/16x7/8 150x1.6x22.2 CUTTING WHEEL FOR METAL, T41,80M/S, 2 NETS, TOP QUALITY, PEGATEC BRAND. P804115016M

GRINDING WHEEL



- HB6169** 5x1/4x7/8 125x6x22 PEGATEC grinding wheel for metal, 80m/s P804115016M
- HB6170** 7x5/16x7/8 180X8X22.2 BEOWULF SUPER GRINDING WHEEL FOR METAL/STAINLESS SPC80271808

TWIST CUP



- HB6154** TWIST CUP BRUSH HIGH QUALITY 5/8" NUT, (4") MAX R.P.M 8500
- HB6155** TWIST CUP BRUSH HIGH QUALITY 5/8" NUT, (5") MAX R.P.M 6500
- HB6156** TWIST CUP BRUSH HIGH QUALITY 5/8" NUT, (6") MAX R.P.M 4500

FLAP DISKS FIBER DISKS & TYPE R QUICK CHANGE DISCS



TYPE T27 HBLAP DISC

- HB6157** ZIRCONIA FLAP DISC (TYPE T27) 4.5" X 7/8" (P40 GRIT) MAX RPM 13300
- HB6158** ZIRCONIA FLAP DISC (TYPE T27) 4.5" X 7/8" (P60 GRIT) MAX RPM 13300
- HB6159** ZIRCONIA FLAP DISC (TYPE T27) 4.5" X 7/8" (P80 GRIT) MAX RPM 13300
- HB6160** ZIRCONIA FLAP DISC (TYPE T27) 5" X 7/8" (P40 GRIT) MAX RPM 12000
- HB6161** ZIRCONIA FLAP DISC (TYPE T27) 5" X 7/8" (P60 GRIT) MAX RPM 12000
- HB6162** ZIRCONIA FLAP DISC (TYPE T27) 5" X 7/8" (P80 GRIT) MAX RPM 12000
- HB6171** PFD125CGS 5" 125X22 VSM XK850X ceramic flap disc for stainless, T27 flat, grit#40
- HB6172** PFD125VZA 5" 125X22 VSM ZK214X zirconia flap disc for stainless, T27 flat, grit#40
- HB6173** PSFD125ZA 5" 125X22 PEGASTAR flap disc for stainless, CN zirconia, T27 flat, grit#40
- HB6166** 5x7/8 125x22 PEGASTAR flap disc for metal, calcined aluminum oxide, T27 flat, grit#40. PACKING:20PCS/BOX 100PCS/CTN PSFD125A

TYPE R QUICK CHANGE DISCS

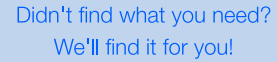


- HB6163** ZIRCONIA TYPE R QUICK CHANGE DISC 3" (P436 GRIT) MAX RPM 3000

FIBER DISK

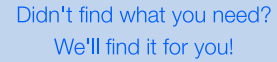


- HB6174** 5" 125X22 zirconia FIBER DISK, grit#36, round hole PFD125ZA



to reach your sales representative...

[illegible]



to reach your sales representative...

[illegible]



hydraBOND[®]

WELDING



HB300MM PRO DC/CV
HEAVY INDUSTRIAL 100% Duty Cycle



HBVSF
Feeder Voltage Sensing Feeder



HB355 2K 355 CC/CV
HEAVY INDUSTRIAL 100% Duty Cycle
Inverter Welder



HB200 Inverter Stick Welder.
Power Supply: 127/220 V 1 Ph., 60 Hertz
Amperage Welding Range: 30 to 200 A
Duty Cycle: 40%



HB2000 4-In-1 Multi-Function
Welding Machine.



Bullet Hinge
W/Zerk Grease Fitting Steel
Body & Pin, Brass Bushing



HB1420
38X203 1.49" x 7.99" 8"x1.5"
Steel Welding Hinge, With Grease Nipper
Steel+Brass+reseeded Thrust ball
Bearing+without paint



Non-Destructive Testing (NDT)
Non-flammable Antispatter
Scan QR-Code Download TDS:



Welding Slag removal Tools
& Safety Equipment



Structural Dual Shield E71T-1



Flux Core AWS A5.20, E71T-GS



Steel Welding Wire ER70S-6 & ER70S-3



Argon Flow-Meter Regulators
CGA 580 & CGA 320



Air Cooled Mig Guns
With Flexible Goose-Neck

Flap Disks & Cutoff Wheels Performs Excellent Sharpness & Extra Durability In Each Application.

