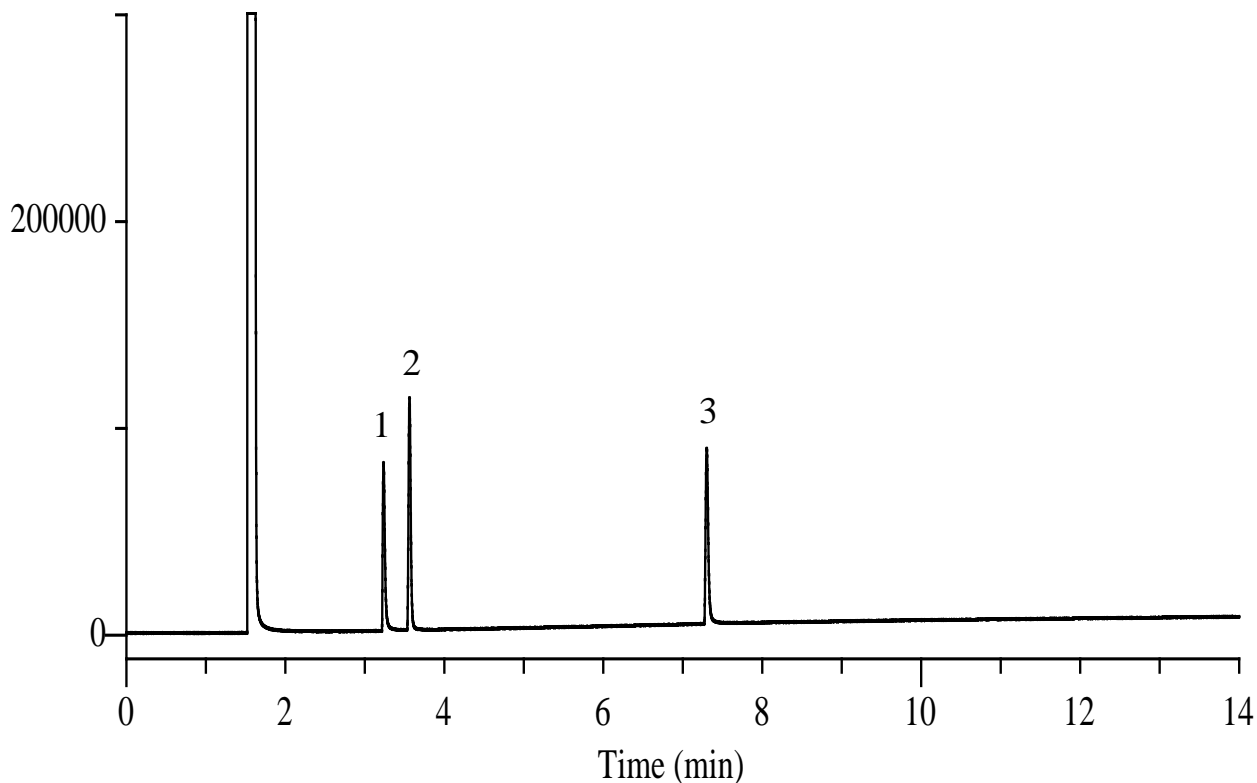


# InertSearch™ for GC

InertCap® Applications

## Propylene glycol, Diethylene glycol, Ethylene glycol

Data No. GA210-0644



### Conditions

**System** : GC/FID  
**Column** : InertCap 1701  
0.32 mm I.D. x 30 m df = 1.00 µm  
**Col. Cat. No.** : 1010-61245  
**Col. Temp.** : 100 °C - 7.5 °C/min - 220 °C  
**Carrier Gas** : He 80 kPa  
**Injection** : Split flow 40 mL/min  
220 °C  
**Detection** : FID Range 10<sup>0</sup>  
250 °C  
**Sample Size** : 500 µg/mL in Methanol  
1.0 µL

### Analyte :

1. Ethylene glycol
2. Propylene glycol
3. Diethylene glycol