



grapefruit

A BIG KITCHEN PRODUCTION

FILM BY CHASE JOLIET

Specs

TRT 86 min

Format Digital

Location USA

Crew

Writer/Director Chase Joliet

Producers
Brooke Dooley
Ben Epstein
Chase Joliet
Justin Hamilton

Cinematographer Justin Hamilton

Editors
Taylor Gianotas
Andy Young



▶ Watch Trailer

Grapefruit

The story



After a devastating divorce, Travis is forced to move into his childhood home with his eccentric, newly sober mother.

While attending an AA meeting with Evelyn, Travis meets the wildly alive Billie. Against his mother's wishes, he develops a friendship with her, pushing everyone to look beyond their shortcomings and accept each other for who they are and where they've been.

From the director

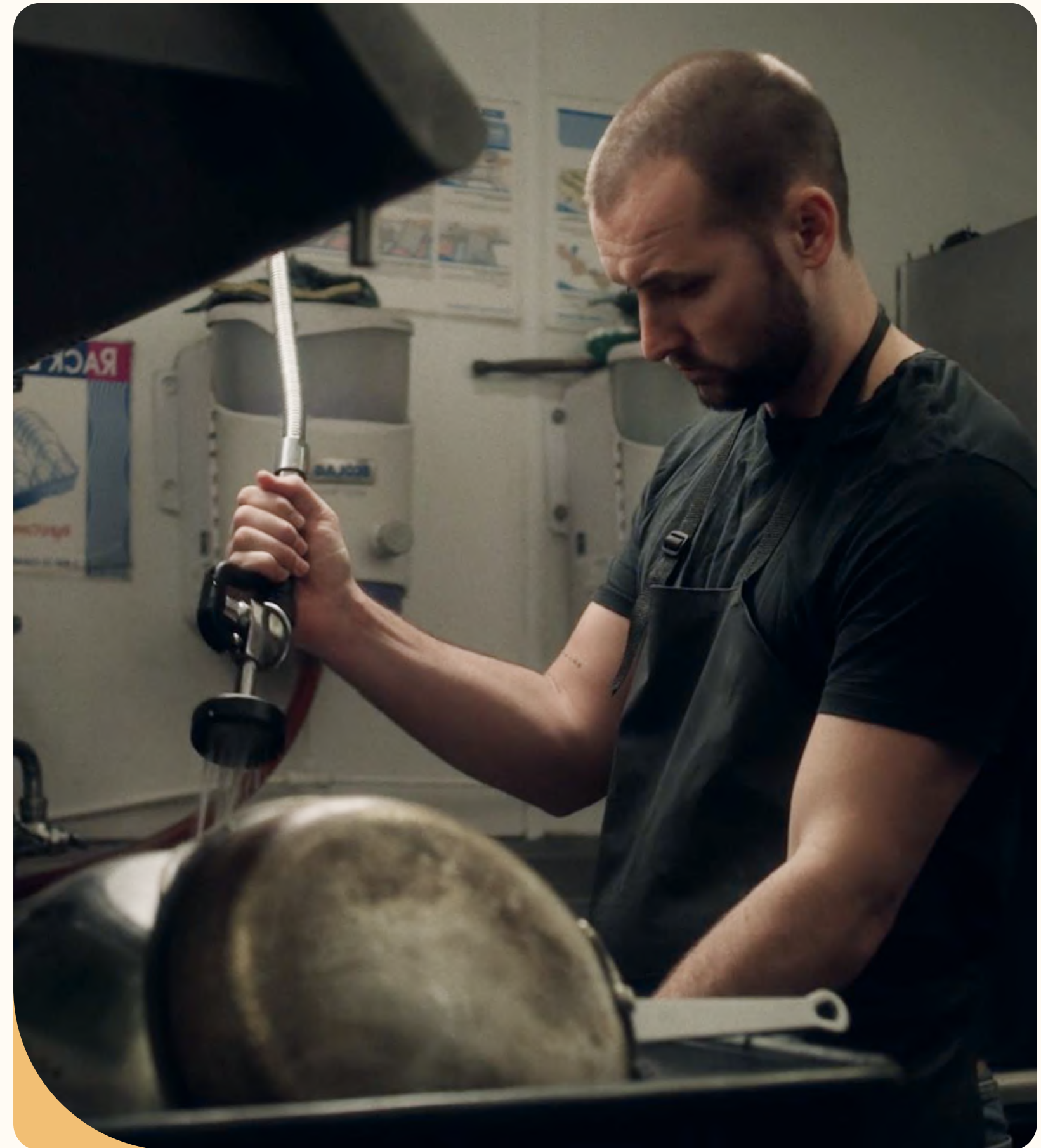
Chase Joliet

I constantly obsess over the question, "Am I really who I used to be?" and I have yet to figure it out. The journey to this story started with a one act play I wrote called "To Love is to Die" and when I sat down to adapt it into a screenplay this story came out instead, and as much as I wanted to push back and fend it off, I couldn't.

Truth is such an imperative word these days and I wouldn't say that everything in this story is true – but I've lived a lot of it in one way or another, with the fictitious knobs of storytelling turned up. I've witnessed those closest to me deal with alcoholism and addiction and I've had my own battles with substance abuse and recklessness throughout my twenties. When I met my wife, she was divorced with no intention of ever loving again. So when this story stood before me knocking persistently on the door of my subconscious, I couldn't help but to answer and see where it would take me.

Where I landed was Grapefruit and what I learned was I needed to let go. At its core, Grapefruit is about acceptance. Accepting our flaws and imperfections, our past and our present, and most importantly each other. My goal was to take the romantic comedy formula we all know so well and insert three flawed human beings desperately trying to let go and move on.

Grapefruit is my directorial debut, opposite my wildly talented wife, Stephanie Barkley. We made the movie over fourteen days with the help of friends and family... and a little known actress, Rosanna Arquette. I'm forever grateful for this experience and everyone who joined me along the way.



Production

Grapefruit was filmed over 14 days on location in Tracy, CA, used as a stand-in for West Texas.

Shot in Tracy, CA

14 day shoot

14 person crew

Original Score by C. A. Gabriel

Husband & Wife in leading roles



Featuring



Rosanna Arquette

Evelyn

Evelyn is almost three years sober. She takes her sobriety and recovery very seriously which causes her to cast judgment on others. She lives a controlled, and routined life stuck in the comfort of her small suburban home.



Chase Joliet

Travis

Travis completely denounces love and believes it's the thing that ruined his life. He hopes to go on living unnoticed and alone. Travis has been working a poetry program to help better bring how he feels on the inside out in a constructive way. Travis is trapped in between Billie and Evelyn. The outside vs. The inside.



Steph Barkley

Billie

Billie contrasts Evelyn, She is alive and curious. She is mildly aware of her substance abuse, but she lives free and full. She desperately wants to be accepted and loved but glosses over how she feels by pushing outward into the world. If Evelyn is inside looking out, Billie is outside looking in.

Cast



Bobby Soto

Flamin' Hot, The Tax Collector, Narcos



Troy Blendell

Legacy, Collateral, Dahmer



David Lucas

Stand Up Comedian, Kill Tony, Joe Rogan Experience



Alexandra Barreto

All American, Mayans M.C.



Ashley Spillers

Vice Principals, War Dogs, Rugrats



Johnno Wilson

I Love that for You, King Richard, Raven's Home



Ashley Padilla

Shithouse, Son of Zorn



Cammie Middleton

Green Trip, Strawberry Princess



Brooke Dooley

Producer

Brooke Dooley is a graduate of San Francisco State University's cinema program. Her devotion to storytelling and determination led her to produce over two dozen films before her 23rd birthday, including Joshua Moore's feature *I Think it's Raining*, which premiered at the Karlovy Vary International Film Festival.

After working on a film in Pakistan, she became a development exec in Los Angeles where she packaged projects for brand sponsorship and mainstream distribution. After two years, Brooke launched her own boutique agency and cultivated the creative talent of emerging directors. Since 2009, she has produced over 200 projects for clients including Google, U.S. Navy, Best Buy, BODYARMOR, Goodyear Tires, Samsung, and Disney.

She produced Erahm Christopher's feature *Listen* starring Jay Reeves, Karen Bethzabe and Maynor Alvarado; and most recently Chase Joliet's feature debut *Grapefruit* starring Rosanna Arquette; and Charles Witcher's short film *Mundo*, executive produced by Eva Longoria, starring Bobby Soto, Otmara Marrero and Clayton Cardenas.



Ben Epstein

Producer

As a creative Ben's highly imaginative and unique vision brings multi-genre pieces to the big screen as he explores the existential questions of life. Always remembering himself as that kid who dreamed of making movies—now he makes movies that explore the worlds of memory and dreams.

His award winning films have been screened at festivals all over the world including SXSW, Palm Springs International, Austin Film Festival, Calgary International Film Festival, Oldenburg International, Cinequest, and Americana Film Festival, and his most recent feature film is being sold by CAA. His television credits include producing for shows *Undeniable* with Joe Buck (5 seasons), *Audience Music* (6 seasons), *Guitar Center Sessions* (2 seasons), *The Dan Patrick Show* (3 years), *The Rich Eisen Show* (3 years), *Fearless* with Tim Ferriss (1 season), and *Kingdom* (3 Seasons). His work in unscripted, commercials, and music videos have been viewed digitally over a hundred million times, and have shown on networks and streamers including Netflix, Amazon, FOX, TNT, NFL Network, Fox Sports, DirecTV's Sunday Ticket and RedZone channels, MTV, BET, and Fuse. He is currently producing a show starring Kevin Costner for FOX.



Chase Joliet

Writer/director/actor

Chase Joliet is an actor and a filmmaker from Dallas, Texas. He worked with legendary director Terrence Malick for a number of years on *To the Wonder*, *Voyage of Time*, and *Song to Song* after which he produced his first independent feature film *KRISHA* (A24) which won SXSW Grand Jury award and audience award, premiering at the CANNES Film Festival in 2016.

Chase won the John Cassavetes award at the 2016 Indie Spirit awards and went on to help develop Trey Edward Shults' second feature *It Comes at Night* (A24). Chase's directorial debut is the comedic short *Everything Mattress* which won multiple audience awards and is currently being sold in European Territories.

Grapefruit is a film close to Chase's heart. He grew up in the Dallas suburbs and has dealt with alcohol and substance abuse with those closest to him. His goal for *Grapefruit* is to show the world how acceptance and understanding can bring us all closer together.



Justin Hamilton

Cinematographer

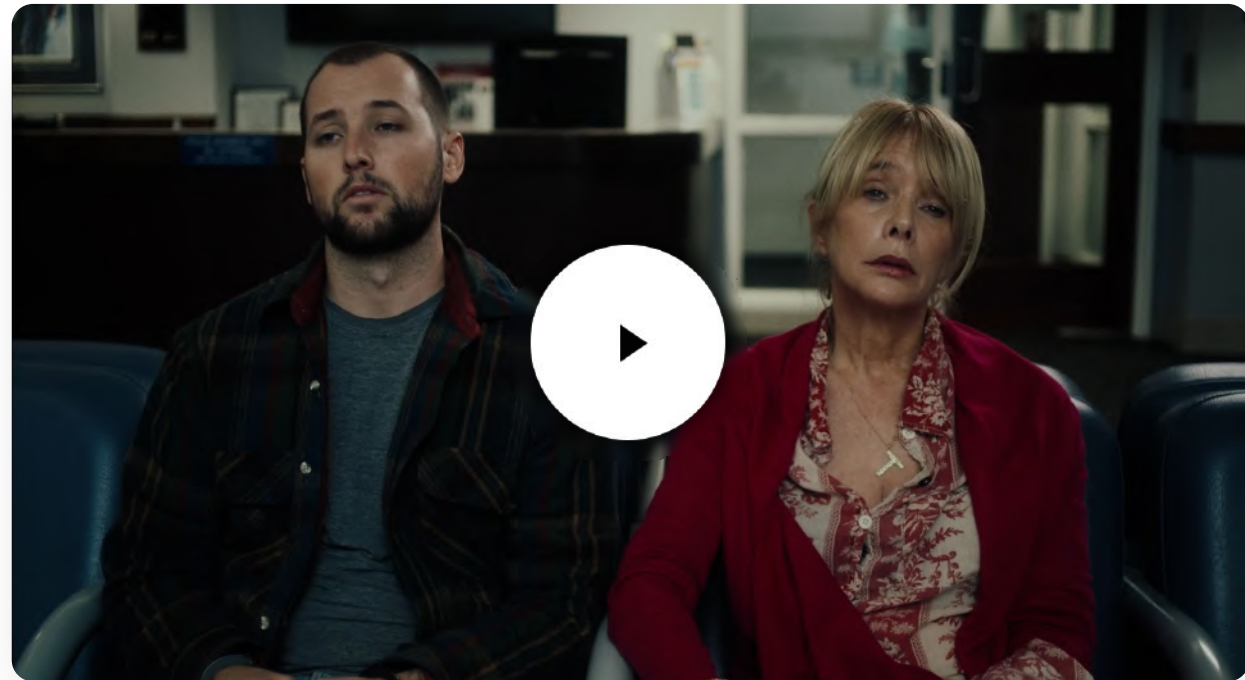
Justin is a Director of Photography based in Los Angeles, CA. He has filmed projects in over 20 countries ranging from commercials to documentaries and narrative films.

Commercially he has worked with global brands, shooting campaigns for the likes of Nike, Google, Time Inc. and more. Narratively his work has been screened at festivals from Los Angeles to Cannes. Most recently, he was at SXSW with the short *Deep Tissue*, which he lensed for director Meredith Alloway, and at Locarno International Film Festival and London BFI with *The Alleys*, for Academy Award nominated director Bassel Ghandour.

Justin hails from Dallas, TX, where he grew up alongside Chase Joliet. The two were in Indian Guides and Boy Scouts together, and even played in a rock band in Junior High. This will be their first of many films together.

Media Resources

Trailer



Stills



Assets



A man and a woman are sitting in a dark field at night. The man is on the left, wearing a dark jacket over a plaid shirt and a white t-shirt. The woman is on the right, wearing a dark top. They are both looking towards the camera with serious expressions. The background is dark and blurry, suggesting an outdoor setting at night.

grapefruit

Contact

Chase Joliet

Writer / Director / Producer

Chase.Joliet@gmail.com