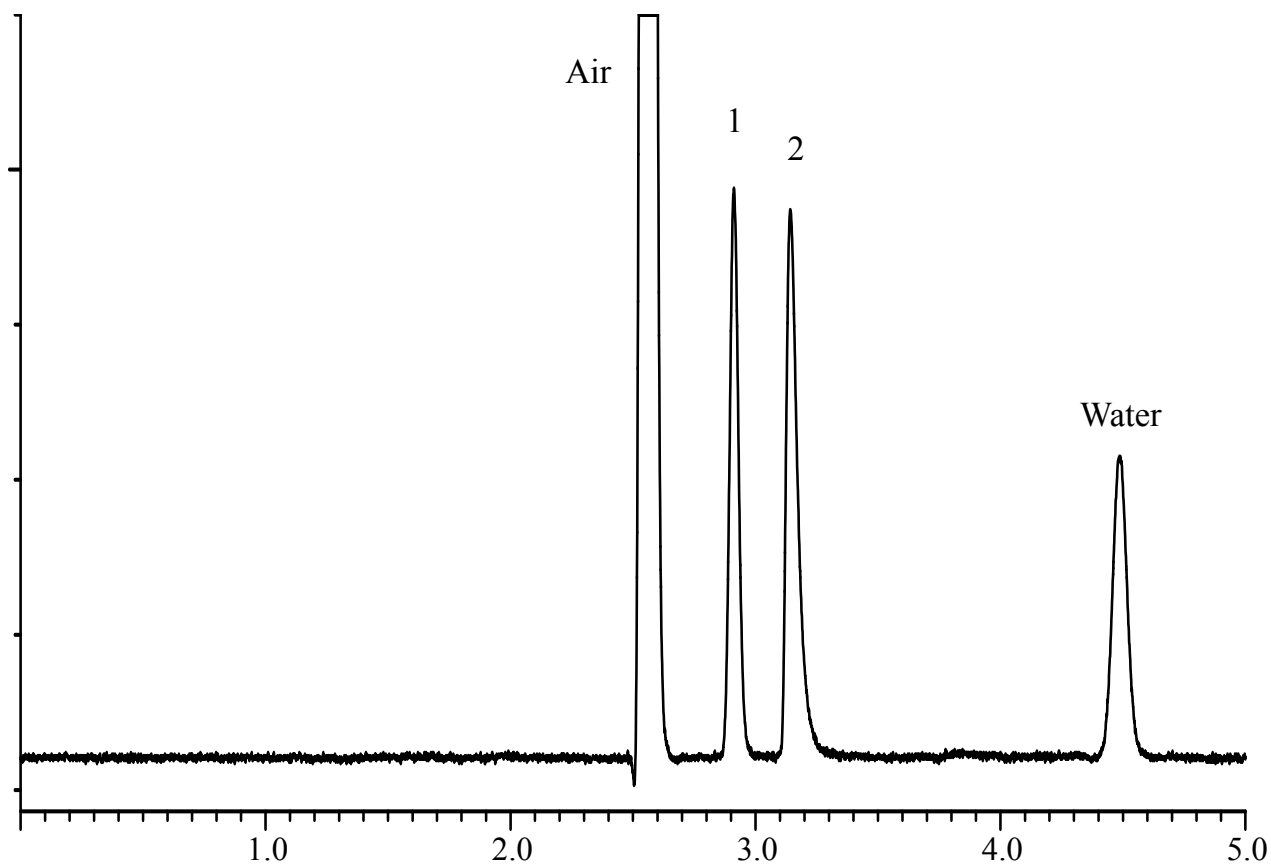


InertSearch™ for GC

InertCap® Applications

Sulfur compounds

Data No. GA142-0410



Conditions

System : GC/PID
Column : InertCap 1
0.53 mm I.D. x 30 m df = 5.00 μ m
Col. Cat. No. : 1010-11449
Col. Temp. : 40 °C
Carrier Gas : He 20 kPa
Injection : Split flow 15 mL/min
200 °C
Detection : PDD/PID mode Range 1x
Discharge Gas Inlet 2%Ar/He 30 mL/min
200 °C
Sample Size : Analytes in Air
200 μ L

Analyte:

1. Hydrogen sulfide 12 ppm
2. Methyl mercaptan 11 ppm