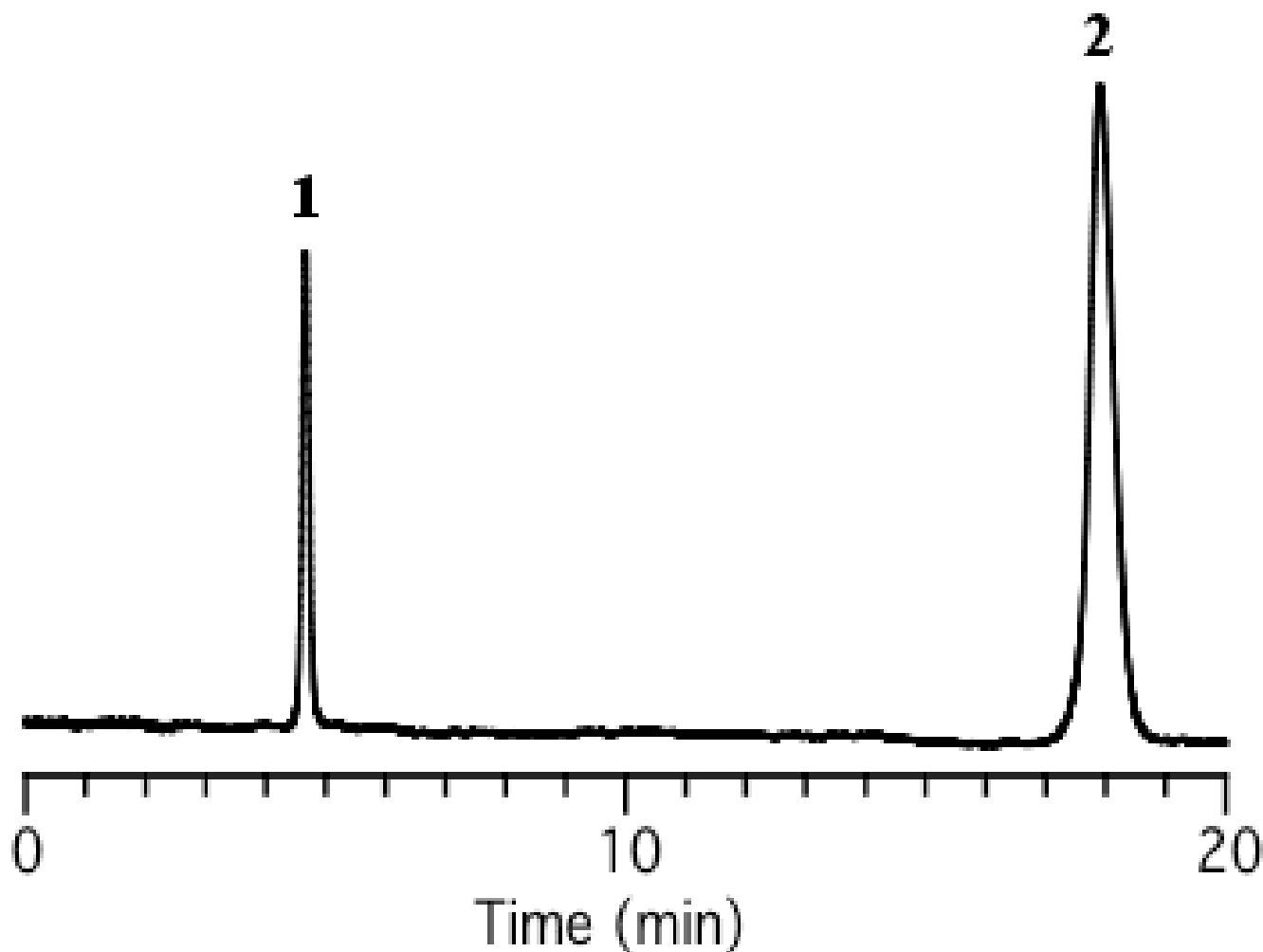


# InertSearch™ for LC

Inertsil® Applications

## Analysis of Oxine-Copper

Data No. LA304-0000



Column	: Inertsil Ph-3 5 $\mu$ m 150 x 4.6 mm I.D.	Solutes	: 1. Oxine-copper 2. Caffeine
Column Cat. No. :			
Eluent	: A) CH <sub>3</sub> CN B) 20 mM H <sub>3</sub> PO <sub>4</sub> A/B = 10/90, v/v		
Flow rate	: 1.0 mL/min.		
Col. Temp.	: 40°C		
Detection	: UV 254 nm		
Injection Vol.	:		
Sample	:		