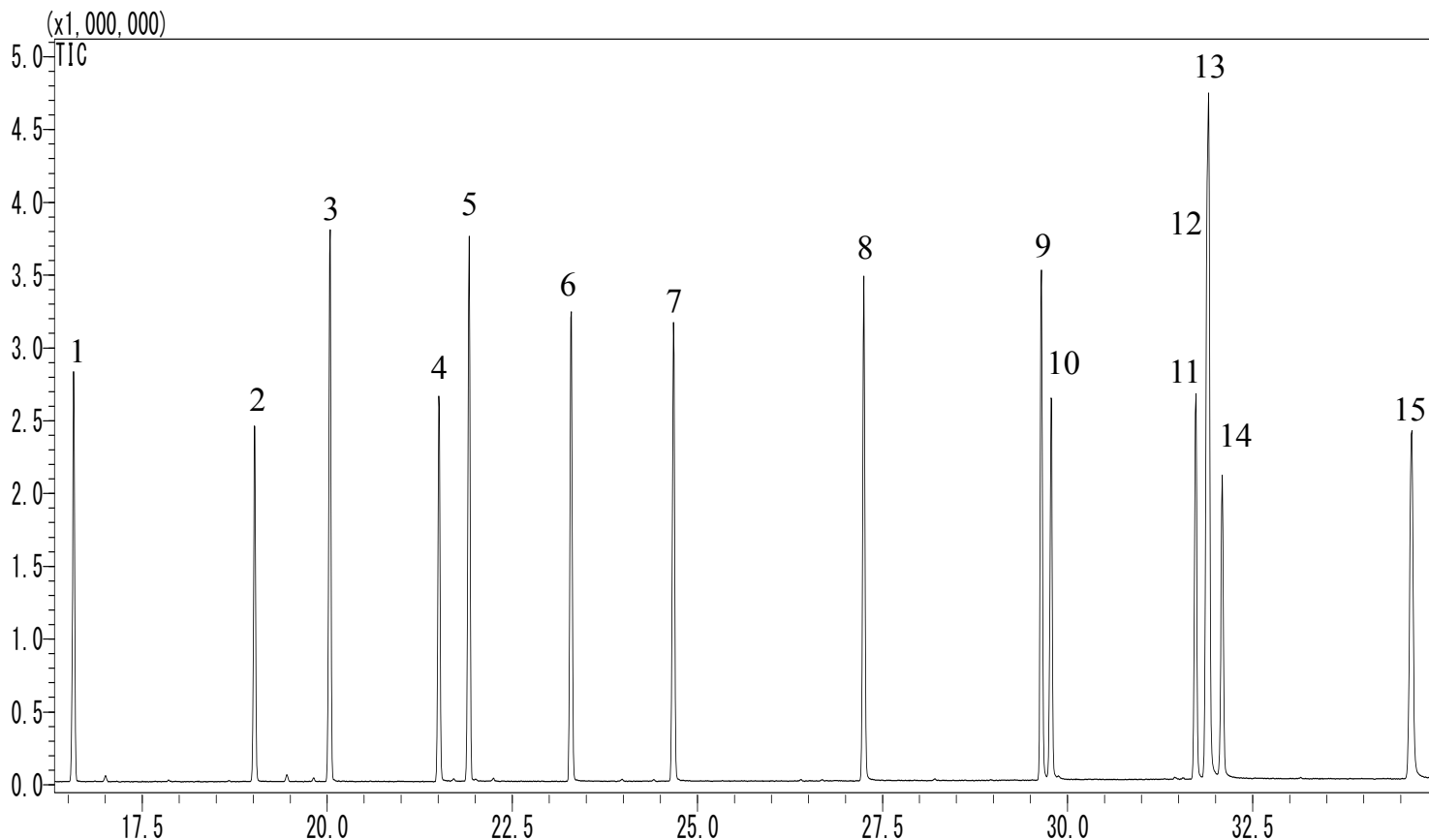


## Phthalic acid esters

Data No. GA177-0904



### Conditions

**System** : GC/MS  
**Column** : InertCap 5MS/Sil  
0.25 mm I.D. x 30 m df = 0.25 µm  
**Col.Cat. No.** : 1010-15142  
**Col. Temp.** : 60 °C(3 min hold) - 7 °C/min - 260 °C(19 min hold)  
**Carrier Gas** : He 36.5 cm/sec  
**Injection** : Splitless 1 min  
250 °C  
**Detection** : MS Scan (35 – 500 m/z)  
Interface Temp. 280 °C  
**Sample Size** : 10 µg/mL in Acetone  
1 µL

**Analyte** :

1. Dimethyl phthalate
2. Diethyl phthalate
3. Di-isopropyl phthalate
4. Diallyl phthalate
5. Di-*n*-propyl phthalate
6. Di-isobutyl phthalate
7. Di-*n*-butyl phthalate
8. Di-*n*-pentyl phthalate
9. Di-*n*-hexyl phthalate
10. Butylbenzyl phthalate
11. Dicyclohexyl phthalate
12. Di-2-ethylhexyl phthalate
13. Di-*n*-heptyl phthalate
14. Diphenyl phthalate
15. Di-*n*-octyl phthalate