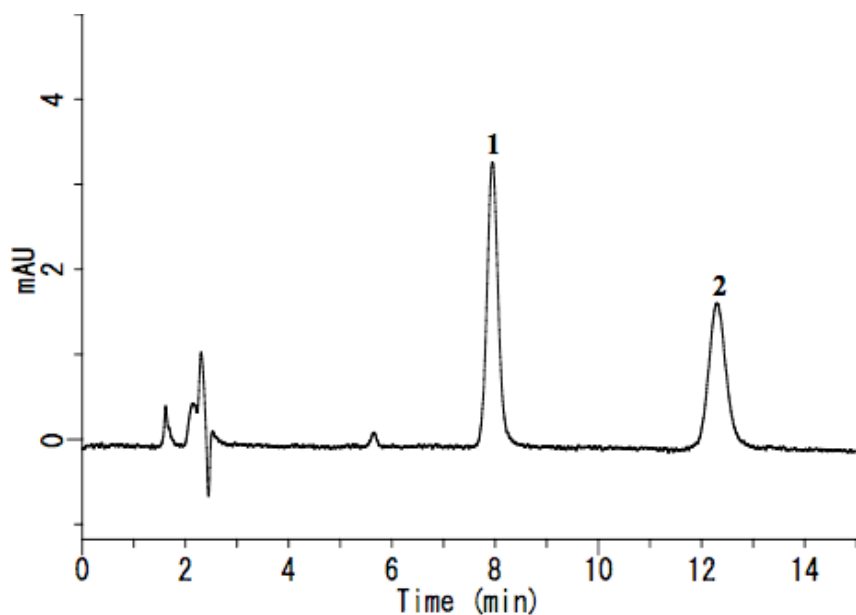


InertSearch™ for LC

Inertsil® Applications

Analysis of sweeteners

Data No. LA520-0696



System : GL-7400 system

Column : Inertsil NH2 (5 μ m, 150 \times 4.6 mm I.D.)

Column Cat. No. :

Eluent : A) CH₃CN

B) H₂O

A/B = 80/20, v/v

Flow rate : 1.0 mL/min

Col. Temp. : 40 °C

Detection : UV 210 nm (GL-7452A PDA detector)

Injection Vol. : 20 μ L

Sample : Sweeteners

Solutes : 1. Stevioside(10 mg/L)

2. Rebaudioside A(10 mg/L)