

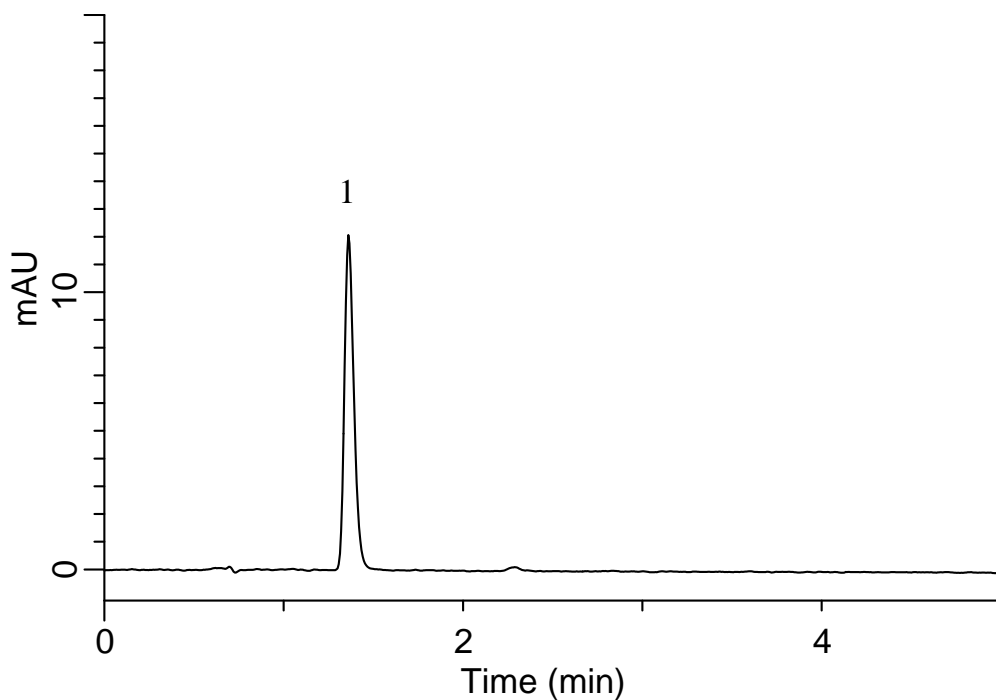
InertSearch™ for LC

Inertsil® Applications

Analysis of Sertraline hydrochloride

(Under the Condition of European Pharmacopoeia 7.0)

Data No. LB082-0894



Conditions

System : GL-7400 HPLC system
Column : Inertsil ODS-3
(4 μ m, 150 x 4.0 mm I.D.)
Column Cat. No. : 5020-04635
Eluent : A) CH₃CN
B) CH₃OH
C) Buffer*
A/B/C = 45/15/40, v/v/v
Flow Rate : 1.8 mL/min
Col. Temp. : 30 °C
Detection : UV 254 nm (GL-7452 PDA Detector)
Injection Vol. : 20 μ L
Sample : Standard

Analyte:

1. Sertraline hydrochloride 55 mg/L

* Buffer : To 28.6 mL of glacial acetic acid slowly add, while stirring and cooling, 34.8 mL of triethylamine, and dilute to 100 mL with water. Dilute 10 mL of this solution to 1000 mL with water.