

018
May 2024

Dance America Attire - Dance America Shoes - Aida Danceshoes
Men's Wear - Ray Rose Shoes - Dancefeel Shoes - Dance Accessories

Dance AMERICA

Inspiration To Movement

Dance America Inc. Peter & Cassandra Schneider
1705 Banks Rd. Margate FL 33068 Tel: 954 - 601 - 1775
www.dance-america.com info@dance-america.com



Dance America Inc.

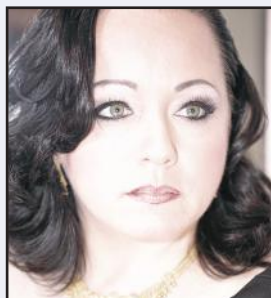
1705 Banks Road, Margate, FL 33063

Tel: 954-601-1775 Fax: 954-601-1776

www.dance-america.com

sales@dance-america.com

Our Showroom is available BY APPOINTMENT ONLY for your personalized service.



Dance America by Dancers for Dancers

Peter & Cassandra Schneider
Former US Latin Champion
Former Finalist of US Showdance,
World Cabaret & World Salsa

Professionally licensed:
Members-NADTA, Pan Am Board Members,
Fellow USISTD

Table of Contents

4 *Dance America Dance Shoes* New Shoe Line Designed with you in Mind

16&44 *Dance Essentials* Enhance your Dance Experience with these Must Have Accessories

8 *Dance America Dance Shoes Limited Edition*

10 *Ray Rose Dance Shoes* The World Champion's Choice of Dance Shoes

13 *DanceFeel* Dance Shoes Made in Portugal - Feel the Difference

15 *Aida* Leading Russian Dance Shoes

17 *Dance America Attire* Clothes that Make you want to Move, Made in the U.S.A.

44 *Men's Fashion* Pants and Shirts for Latin and Smooth

50 *Kid's Corner* Children's Regulation Wear

Payment: We accept Visa, MasterCard, American Express & Discover and cash. FL residents are charged 7% state sales tax.

Shipping: All products are shipped FedEx ground service and are billed at the current published rate. All items are shipped without Signature Required unless otherwise requested. Dance America will not be held responsible for items lost when a signature is not required. Signature required will incur additional fees. Other methods, including overnight service, are available at additional cost. If you wish faster shipping service please mention such in the comments section of your order. International Shipments will be sent USPS and will be billed exactly the posted international rates. Once your order has shipped FedEx time in transit/delivery times vary from one to six business days depending on your location. Shipping & handling fees within the USA are based on FEDEX/USPS published rates International Shipments will be sent USPS and will be billed exactly the posted international rates.

Stock Status: Not all stock items are always available for immediate delivery. Items in stock usually ship within 2 business days of the order. If the item is not in stock your order will be updated with notes as to the stock status of the items.

Exchanges & Return Policy:

- 1: Any returns must be completed within 21 days from the date your product left the warehouse. A restocking fee detailed below will be applied to any item returned after 21 days.
- 2: All returned items will be examined once they have been received.
- 3: Any unaccepted return(s)/exchange(s) will be returned to customer at customer's expense.
- 4: Refunds are for merchandise only - ALL shipping and handling fees are non-refundable.
- 5: Returned shoes not received in the original packing will be subject to a 50% repackaging fee.
- 6: All sales of Clearance items are final. No return of Clearance items will be permitted for refund, credit or exchange unless product is damaged or is defective upon to examination.
- 7: Return by a carrier that offers parcel tracking information (e.g., UPS, FedEx, USPS Registered Mail). Dance America is not liable for any costs associated with the damage or loss of any return shipment during transit.
- 8: Allow 10-15 business days for your return to be processed once we have received the merchandise. All returned items will be examined once received and you will be informed via email if your return has not qualified for credit or replacement. Credit card companies vary in the time they take to reflect a credit to your account or monthly statement. Please allow 1 - 2 billing cycles for the refund to appear on your statement
- 8: Enclose a copy of your sales receipt or invoice with your return. All returns arriving without this information or other means of instruction will have no action taken

Restocking Fees & Policy

Dance Shoes: Return accepted with original tags, in original box - 15% restocking fee of purchase price after 21 days (soiled, scratched, marked, stretched, worn, damaged box - not accepted)
 Dancewear: Return accepted with original tags, in original condition - 10% restocking fee of purchase price after 21 days (missing tag, worn, altered, washed, soiled, stained, scent - not accepted)
 No Returns of: Rhinestones, Fishnets, Undergarments, Books/DVD'S, Tanning Products, Special/ Custom Order, Clearance

Special Orders: To order any item not included in this catalog please contact the office directly at 954-601-1775. You will be informed as to the possibility, pricing and time frame for any special order at that time. At no time may a special order be cancelled, changed or returned once the order is placed.

Fitting & Care: Dance Shoes are generally worn smaller than your regular shoes. They must fit snugly without hurting so that you maintain proper balance. Your foot should cover all parts of the shoe and should not slide. In closed toe styles the toes should be as close to the end of the shoe as possible without feelings a backwards pressure on the nailbed. In open toe styles it is preferable that the toes actually extend over the front edge of the shoe.

N.B.: Heel heights are measured from the center side of the heel - NOT FROM THE CENTR BACK. Polish leather shoes regularly with a silicone based polish. (DO NOT USE PETROLEUM BASED PRODUCTS) and use a shoe brush to maintain the nap of the sole keeping it free of dirt and wax.

Prices are subject to change without notice due to supplier increases and/or currency fluctuations.

Ladies Sizes		The following sizes are approximate													
American	4	4.5	5	5.5	6	6.5	7	7.5	8	8.5	9	9.5	10	10.5	11
British - Open Toe	-	2	2.5	3	3.5	4	4.5	5	5.5	6	6.5	7	7.5	8	-
British - Closed Toe	2	2.5	3	3.5	4	4.5	5	5.5	6	6.5	7	7.5	8	-	-
European	34	34.5	35	35.5	36	36.5	37	37.5	38	38.5	39	39.5	40	40.5	41
Russian - Open Toe	21	21.5	22	22.5	23	23.5	24	24.5	25	25.5	26	-	-	-	-
Russian - Closed Toe	-	22	22.5	23	23.5	24	24.5	25	25.5	26	-	-	-	-	-
Men's Sizes															
American	7	7.5	8	8.5	9	9.5	10	10.5	11	11.5	12	12.5	13	13.5	14
British	6	6.5	7	7.5	8	8.5	9	9.5	10	10.5	11	11.5	12	-	-
European	40	40.5	41	41.5	42	42.5	43	43.5	44	44.5	45	45.5	46	46.5	47
Russian	-	-	25	25.5	26	26.5	27	27.5	28	28.5	29	-	-	-	-

We cut out the middle man to bring you the World-Renowned Dance America quality in a factory direct shoe line.
 Designed in America using the highest quality European Materials.
 Made to the exacting quality standards that you know and expect from all Dance America products.



Dance America Danceshoes:

- *4mm memory foam
- *Exclusive rhinestone buckle
- *Open Toe: order half a size smaller than your American size
- *Comfort fit width
- *Well balanced heel
- *Some styles available in wide
- *Beautiful satin silk blend
- *Closed Toe: order your American size
- *Genuine leather insole
- *Shock absorbing heel tip



Miami Ladies Latin/Rhythm **\$119.-**
 Color : Dark Tan Satin
 Sizes : American 4.5 - 10
 Heel : 2.5" & 3" Flare Heel
 Width : Comfort Fit



Cheyenne Ladies Latin/Rhythm **\$119.-**
 Color : Dark Tan Satin
 Sizes : American 4.5 - 10
 Heel : 2.5" & 3" Flare Heel
 Width : Comfort Fit



Madison Ladies Latin/Rhythm **\$119.-**
 Color : Dark Tan Satin
 Sizes : American 4.5 - 10
 Heel : 2.5" Flare Heel
 Width : Comfort Fit



Now also in WIDE



Phoenix Ladies Latin/Rhythm **\$119.-**

Color : Dark Tan Satin
Sizes : American 4.5 - 10
Heel : 2" Flare & 2.5" Flare Heel
Width : Comfort Fit, Wide



Dallas Ladies Latin/Rhythm **\$139.-**

Color : Bronze Vegan Leather
Sizes : American 4.5 - 10
Heel : 3" Slim Heel
Width : Comfort Fit

Now also in WIDE



Brooklyn Ladies Ballroom **\$119.-**

Color : Light Tan Satin
Sizes : American 4.5 - 10
Heel : 2" Flare & 2.5" Flare Heel
Width : Comfort Fit, Wide



Helena Ladies Ballroom **\$119.-**

Color : Tan Stretch Leather
Sizes : American 4.5 - 10
Heel : 2" Wide & 2.5" Flare Heel
Width : Comfort Fit

Now also in WIDE



Charlotte Ladies Smooth **\$119.-**

Color : Light Tan Satin
Sizes : American 4.5 - 10
Heel : 2" Flare & 2.5" Flare Heel
Width : Comfort Fit, Wide



Columbia Ladies Smooth **\$119.-**

Color : Light Tan Satin
Sizes : American 4.5 - 10
Heel : 2.5" Flare Heel
Width : Comfort Fit





Now also in WIDE

Savannah Ladies Practice **\$129.-**

Color : *Black Leather & Mesh*
Sizes : *American 4.5 - 10*
Heel : *1.5" Cuban Heel*
Width : *Comfort Fit & Wide*



Aspen Mens Latin **\$129.-**

Color : *Black Leather/Canvas*
Sizes : *American 7 - 12.5*
Heel : *1.5" Latin Heel*
Width : *Comfort Fit*



Orlando Mens Latin **\$119.-**

Color : *Black Canvas*
Sizes : *American 7 - 12.5*
Heel : *1.5" Latin Heel*
Width : *Comfort Fit*



Now also in WIDE

CharlotteR & BrooklynR **\$179.-**

Color : *Light Tan Satin with added Rhinestone Band*
Sizes : *American 4.5 - 10*
Heel : *2" & 2.5" Flare Heel*
Width : *Comfort Fit & Wide*



Denver Mens Ballroom **\$129.-**

Color : *Black Patent*
Sizes : *American 7 - 12.5*
Heel : *1" Heel*
Width : *Comfort Fit*



Chicago Mens Ballroom **\$139.-**

Color : *Black Patent/Canvas*
Sizes : *American 7 - 12.5*
Heel : *1" Heel*
Width : *Comfort Fit*



Now also in WIDE



Manhattan Mens Ballroom **\$129.-**

Color : *Black Leather*
Sizes : *American 7 - 12.5*
Heel : *1" Heel*
Width : *Comfort Fit & Wide*



Logan Children Ballroom **\$74.-**

Color : *Light Tan Satin*
Sizes : *American C10 - 7*
Heel : *1.4" Block Heel*
Width : *Comfort Fit*

Children's Shoes



Alexandria Children Ballroom **\$74.-**

Color : *Light Tan & White Satin*
Sizes : *American C10 - 7*
Heel : *1.4" Block Heel*
Width : *Comfort Fit*



Jackson Mens Ballroom **\$119.-**

Color : *Black Canvas*
Sizes : *American 7 - 12.5*
Heel : *1" Heel*
Width : *Comfort Fit*



Lincoln Children Ballroom **\$84.-**

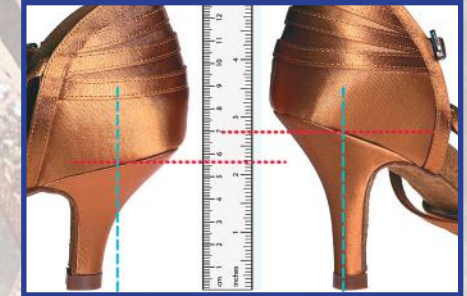
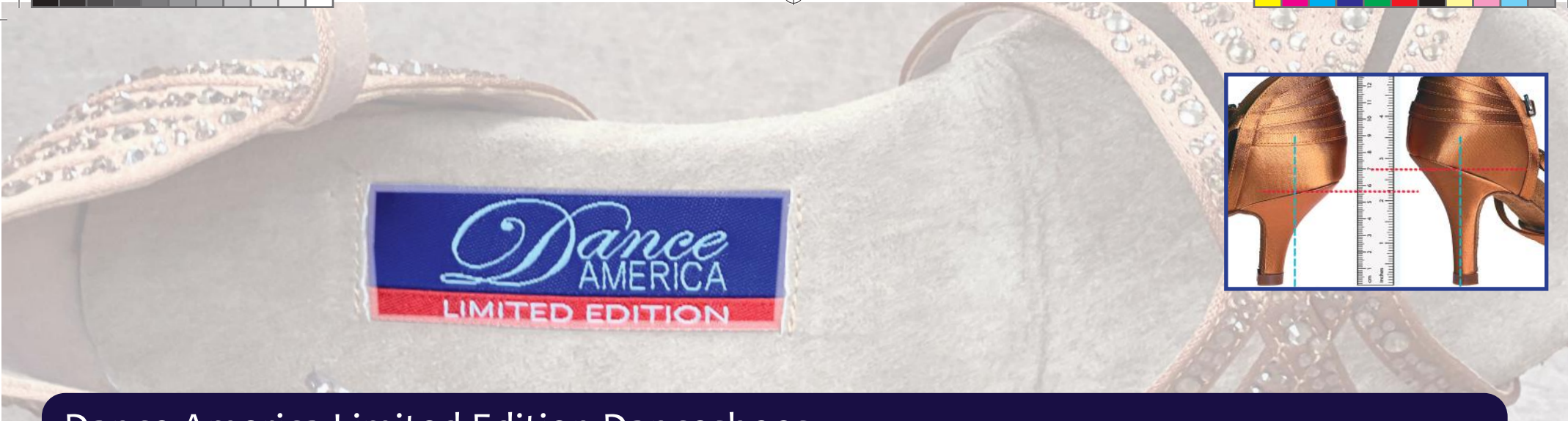
Color : *Black Leather*
Sizes : *American C10 - 6*
Heel : *1" Heel*
Width : *Comfort Fit*



Mason Children Ballroom **\$84.-**

Color : *Black Leather*
Sizes : *American C10 - 6*
Heel : *1.5" Heel*
Width : *Comfort Fit*





Dance America Limited Edition Danceshoes:

- *6mm memory foam
- *Exclusive rhinestone buckle
- *Open Toe: order half a size smaller than your American size
- *Comfort Fit
- *Well balanced heel
- *Some styles available with rhinestones
- *Beautiful satin silk blend
- *Closed Toe: order your American size
- *Genuine leather insole
- *Meticulously handcrafted



Vegas Dark Tan Satin \$219.-
 Color : Dark Tan Satin with Rhinestones
 Sizes : American 5 - 9.5
 Heel : 2.25" & 2.75" Slim Heel
 Width : Comfort Fit



Vegas Blue Satin \$219.-
 Color : Blue Satin with Rhinestones
 Sizes : American 5 - 9.5
 Heel : 2.75" Slim Heel
 Width : Comfort Fit



Vegas Red Satin \$219.-
 Color : Red Satin with Rhinestones
 Sizes : American 5 - 9.5
 Heel : 2.75" Slim Heel
 Width : Comfort Fit





Vegas Tan Satin \$179.-

Color : *Dark Tan Satin*
Sizes : *American 5 - 9.5*
Heel : *2.25" & 2.75" Slim Heel*
Width : *Comfort Fit*



Vegas Tan Microfiber \$179.-

Color : *Light Tan Microfiber*
Sizes : *American 5 - 9.5*
Heel : *2.25" & 2.75" Slim Heel*
Width : *Comfort Fit*



Hampton \$139.-

Color : *Black Satin*
Sizes : *American 5 - 9.5*
Heel : *1.5" Cuban Heel*
Width : *Comfort Fit*



Hollywood Champagne Satin \$219.-

Color : *Champagne Satin with Rhinestones*
Sizes : *American 5 - 9.5*
Heel : *2.25" Slightly Flared Heel*
Width : *Comfort Fit*



Hollywood Red Satin \$219.-

Color : *Red Satin with Rhinestones*
Sizes : *American 5 - 9.5*
Heel : *2.25" Slightly Flared Heel*
Width : *Comfort Fit*



Hollywood Champagne Satin \$179.-

Color : *Champagne Satin*
Sizes : *American 5 - 9.5*
Heel : *2.25" Slightly Flared Heel*
Width : *Comfort Fit*





RAY ROSE
LONDON SINCE 1978

RAY ROSE
LONDON SINCE 1978

Ray Rose Danceshoes:

- *Ray Rose Logo buckle
- *"Non stretch" strapping
- *Latex sports orthotic with integral arch and metatarsal support

- *Optimum flexibility with stability and control
- *Anti-bacterial microfiber sock and lining
- *Anti slip heel tips



Kalahari *Ladies Latin/Rhythm* **\$ 159.-**
Color : *Dark Tan Satin*
Sizes : *British 2 - 8*
Heel : *2" & 2.5" Flare Heel*
Width : *Medium Plus*



Persephone *Ladies Latin/Rhythm* **\$ 159.-**
Color : *Light Tan Satin*
Sizes : *British 2 - 8*
Heel : *2" & 2.5" Flare Heel*
Width : *Medium*



Blizzard *Ladies Latin/Rhythm* **\$ 159.-**
Color : *Dark Tan Satin*
Sizes : *British 2 - 8*
Heel : *2.5" & 3" Flare Heel*
Width : *Medium*



Pavo Ladies Latin/Rhythm **\$ 159.-**
 Color : *Light Tan Satin*
 Sizes : *British 2 - 8*
 Heel : *2" & 2.5" Flare Heel*
 Width : *Medium*



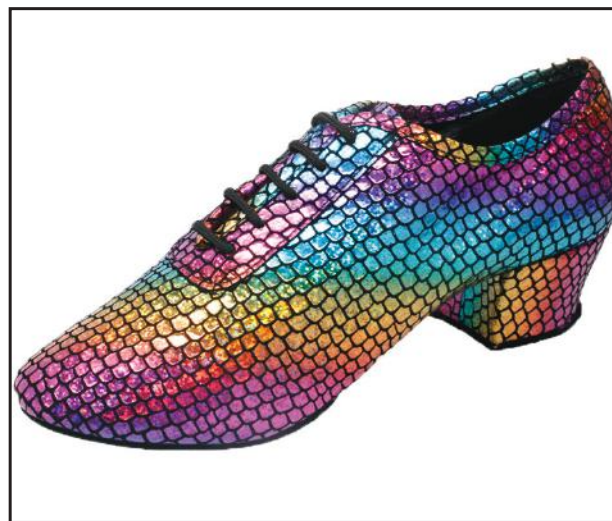
Nevada Ladies Smooth **\$ 169.-**
 Color : *Flesh Satin*
 Sizes : *British 2 - 8*
 Heel : *2" & 2.5" Flare Heel*
 Width : *Medium Plus*



Rockslide Ladies Ballroom **\$ 159.-**
 Color : *Flesh Satin*
 Sizes : *British 2 - 8*
 Heel : *2" & 2.5" Flare Heel*
 Width : *Medium*



Solstice Ladies Practice **\$ 169.-**
 Color : *Leopard Print Leather*
 Sizes : *British 2 - 8*
 Heel : *1.5" Cuban Heel*
 Width : *Medium*



Solstice Rainbow Ladies Practice **\$ 169.-**
 Color : *Rainbow Print Leather*
 Sizes : *British 2 - 8*
 Heel : *1.5" Cuban Heel*
 Width : *Medium*



Breeze Ladies Practice **\$ 159.-**
 Color : *Black Leather*
 Sizes : *British 2 - 10*
 Heel : *1.5" Cuban Heel*
 Width : *Medium*





Tiber *Ladies Practice* **\$ 169.-**
 Color : *Blk. Croc. Leather & Mesh*
 Sizes : *British 2 - 8*
 Heel : *2" Cuban Heel*
 Width : *Medium*



Bryan *Mens Latin* **\$189.-**
 Color : *Black Leather*
 Sizes : *British 7 - 12*
 Heel : *1.5" Signature Heel*
 Width : *Medium*

Now also in WIDE



Sandstorm *Mens Ballroom* **\$169.-**
 Color : *Black Leather, Black Patent*
 Sizes : *British 7 - 12*
 Heel : *1" ProGlide Heel*
 Width : *Medium & Wide*



Lorna Lee *Ladies Practice* **\$ 159.-**
 Color : *Blk. Leather & Suede*
 Sizes : *British 2 - 8*
 Heel : *2" Cuban Heel*
 Width : *Medium*



Windrush *Mens Ballroom* **\$189.-**
 Color : *Black Suede*
 Sizes : *British 7 - 12*
 Heel : *1" ProGlide Heel*
 Width : *Medium*



Windrush *Mens Ballroom* **\$189.-**
 Color : *Black Patent*
 Sizes : *British 7 - 12*
 Heel : *1" ProGlide Heel*
 Width : *Medium*





Dance Feel Danceshoes Feel the Difference:

- *Double cushioning material for an extraordinary comfort.
- *Heel balanced for an amazing stability
- *Long heelcup and strap for extra foot support.

- *Great foot support and and amazing flexibility.
- *Designed with long lasting comfort in mind



F14 Ladies Latin/Social Dance **\$ 139.-**
 Color : Super soft Tan Leather Diva
 Sizes : Euro 34 - 41
 Heel : 2" Wide & 2.5" Flare Heel
 Width : Medium Plus



F14 Ladies Latin/Social Dance **\$ 139.-**
 Color : Super soft Black Leather Diva
 Sizes : Euro 34 - 41
 Heel : 2" Wide & 2.5" Flare Heel
 Width : Medium Plus



F14 Ladies Latin/Social Dance **\$ 139.-**
 Color : Super soft Black Leather Diva
 Sizes : Euro 34 - 41
 Heel : 2" Wide & 2.5" Flare Heel
 Width : Medium Plus



R346 Ladies Smooth Dance \$ 139.-
 Color : Black Satin, Rounded Toe Box
 Sizes : Euro 34 - 41
 Heel : 2" Wide Heel
 Width : Wide



R346 Ladies Smooth Dance \$ 139.-
 Color : Tan Satin, Rounded Toe Box
 Sizes : Euro 34 - 41
 Heel : 2" Wide & 2.5" Flare Heel
 Width : Wide



R346 Ladies Smooth Dance \$ 139.-
 Color : Tan Satin, Rounded Toe Box
 Sizes : Euro 34 - 41
 Heel : 2" Wide & 2.5" Flare Heel
 Width : Wide



Gabi Ladies Latin/Evening Dance \$ 169.-
 Color : Tan Leather & Leopard
 Sizes : Euro 34 - 41
 Heel : 3" Stiletto Heel
 Width : Medium



F50 Ladies Super soft Practice \$ 139.-
 Color : Black Diva Suede Leather
 Sizes : Euro 34 - 41
 Heel : 1.5" Cuban Heel
 Width : Medium Plus, Rounded Toe Box



F50 Ladies Unique Designd Dance \$ 139.-
 Color 1: Tan & Brown Novelty Leather
 Color 1: Red & White Novelty Leather
 Sizes : Euro 34 - 41
 Heel : 2.5" Flare Heel
 Width : Medium





Aida Dance Shoes made in Russia

*ergonomic dance shoes
*strong arch support

*supportive
*ultra flexible

*high performance
*suede lining



Karina (070E) Ladies Latin/Rhythm \$ 250.-
Color : *Dark Tan Satin*
Sizes : *Russian 21 - 26*
Heel : *2.5" & 3" Slim Heel*
Width : *Medium, Wide*



Andra (080E) Ladies Latin/Rhythm \$ 250.-
Color : *Dark Tan Satin*
Sizes : *Russian 21 - 26*
Heel : *2.5" & 3" Slim Heel*
Width : *Medium, Wide*



Stefano (138E) Mens Latin/Rhythm \$ 250.-
Color : *Black Leather/Patent*
Sizes : *Russian 25 - 29*
Heel : *1.5" Heel*
Width : *Medium*



Smagin (136T) Mens Latin/Rhythm \$ 250.-
Color : *Black Crepe/Patent*
Sizes : *Russian 25 - 29*
Heel : *1.5" Tornberg Heel*
Width : *Medium*

Dance Essentials

every serious Dancer should have



Heel Tips & Covers 6.-
Replacement Heel tips for all makes & models of shoes.



B030 \$29.-
DA Signature Belt
available in silver chain or silver Rhinestone. Show your colors \$29 to \$39.-



Halter Pads \$8.-
Self sticking padded leather cushions the ball of the foot.



Insoles \$10.-
Super soft and cushioned EVA foam insoles - this foam is used in high performance running shoes. Helps relieve tired feet for long hours practicing or teaching



Clear Straps \$5.-
A heavy clear elastic band which slides over the instep to assure court shoes to stay in place.



AeroTan \$29.-
Shimmer Powder. Pearl Powder boosts the natural radiance of the skin while accenting complexion



Heel Grips \$6.-
Padded Suede Insert grips the heel securely in all shoes.



Shoe Brush \$10.-
Steel bristle brush removes dirt and wax build-up restoring the sole to its original nap.



Aery Jo Tan \$36.-
Diamond pearl pigment provides shiny look that does not smudge or stain garments.



Shoe Glue \$10.-
Acetone based silicone glue remains flexible while maintaining a secure bond.



Capezio Fishnet \$32.-
Providing a professional finish to any dress, Caramel or Toffee color
Size: S/M, M/T, & XL

Accessories

to embellish your Dance America Outfit



B010 \$29.-
Rhinestone Belt
Simple Elastic Belt with Oval Rhinestone Buckle. Fits between 26" - 42"



B007 Black \$45.-
Rhinestone Belt
Wide Elastic Belt with Rhinestone decoration. Fits between 26" - 42"



B004 \$45.-
Rhinestone Belt
Fits between 24" - 41"



B002 \$35.-
Rhinestone Belt
Wide Elastic Belt with Rhinestone Center. Fits between 25" - 36"



B005 \$29.-
Fashion Belt
Elastic Belt with gold chain. One size fits most. Fits between 26" - 38"



B005 \$29.-
Fashion Belt
Elastic Belt with gold chain. One size fits most. Fits between 26" - 38"



B006 \$35.-
Rhinestone Belt
Narrow Elastic Belt with Rhinestone Bow, Fits between 25" - 38"



B008 Black \$45.-
Rhinestone Belt
Wide Elastic Belt with Gold & Topas Rhinestone decoration. Fits between 26" - 42"



B007 Red \$45.-
Rhinestone Belt
Wide Elastic Belt with Rhinestone decoration. Fits between 26" - 42"



B001 Flower Belt \$25.-
Elastic Belt with Silk Flower one size fits most, available in black, red



B003 \$35.-
Rhinestone Belt
Narrow Elastic Belt with Rhinestone Bow, One size fits most.

Dance AMERICA

Inspiration To Movement

The 2024 Collection By Dance America

Dance America Attire offers our clients unparalleled quality, style and workmanship in our industry. Our materials, excluding the special collections, are a 95% polyester 5% spandex, moisture wicking microfiber weave. A light flowing material that moves perfectly with the body, all pieces of the collection have been designed to be worn both as dancewear and everyday attire. Our State of the Art facility, with over 20 high speed industrial machines, avoids lengthy backorder problems. Should an item not be in stock it can be produced in a timely manner. We have made enormous investments in our machinery to ever improve our quality and workmanship. Designs are flattering to most clientele and age ranges, having a feminine yet sexy, comfortable and danceable style. The exceptional weave of Dance America Apparel allows for easy packing and traveling with almost no wrinkles.

MADE IN THE USA

Dance America Ladies Attire Sizing Chart

	XS	S	M	L	XL	NEW XXL
Bust	33" / 84cm	35" / 89cm	37" / 95cm	40" / 102cm	43" / 110cm	46" / 117cm
Waist	24" / 61cm	26" / 67cm	29" / 75cm	32" / 82cm	35" / 90cm	38" / 97cm
Hip	35" / 90cm	37" / 95cm	39" / 100cm	42" / 107cm	46" / 118cm	49" / 125cm

Dance America Men's Attire Sizing Chart

	XS	S	M	L	XL
Chest	33" / 84cm	35" / 89cm	38" / 97cm	41" / 105cm	44" / 112cm
Waist	28" / 71cm	30" / 77cm	32" / 82cm	34" / 87cm	36" / 92cm

Powermesh with color matching Rhinestones

Mesh with SS16AB Rhinestones



2024 SPECIALTY MATERIAL

High Quality Rhinestone embellished Powermesh, Mesh with SS16 AB Rhinestones. Power Mesh embellished with stretch burnout velvet adds elegance & sensuality to every garment.



COLORS

2024



**T
O
P
S**



Top: (Plus Size Available) **69.-**
T2401 T - Shirt Top
 available in black, blue, pink, red, wine, print
 pictured with S2404



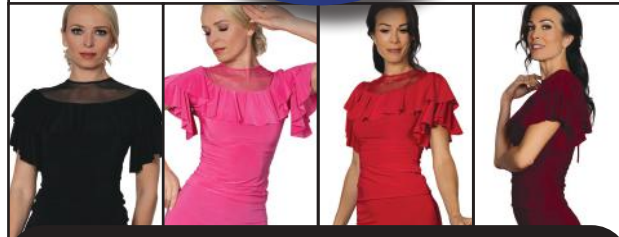
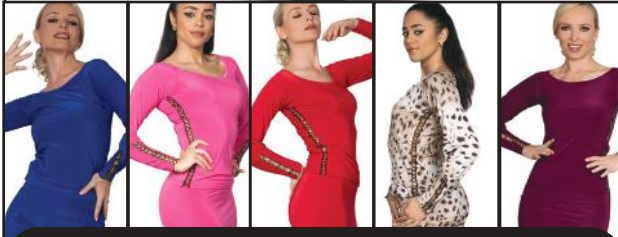
Top: (Plus Size Available) **99.-**
T2402 Dress Top
 available in black, blue, pink, red, wine, print
 pictured with S2401



Top: (Plus Size Available) **99.-**
T2403 Cold Shoulder Box Top
 available in black, blue, pink, red, wine, print
 pictured with S2405



**T
O
P
S**



Top: *(Plus Size Available)* **109.-**
T2404 Gold Circle Embellished Top
available in black, blue, pink, red, wine, leo
pictured with S2415

Top: **119.-**
T2405 Demoiselle Top
available in black, blue, pink, red, wine
pictured with S2410

Top: *(Plus Size Available)* **69.-**
T2406 Cap Sleeve Top w/Draped Yoke
available in black, blue, pink, red, wine, print
pictured with S2402



**T
O
P
S**



Top: 129.-
T2407 Seductive Crochet Top
 available in black, blue, pink, red, wine
 pictured with P2404

Top: 119.-
T2408 Simple Crochet Top
 available in black, blue, pink, red, wine
 pictured with S2409

Top: (Plus Size Available) 119.-
T2409 Stone Embellished Lattice Top
 available in black, blue, pink, red, wine
 pictured with S2414



**T
O
P
S**



Top: *(Plus Size Available)* **119.-**
T2410 Demure Powermesh Top
available in black, blue, pink, red, wine
pictured with P2403

Top: *(Plus Size Available)* **99.-**
T2411 Asymmetric Bloused Top
available in black, blue, pink, red, wine
pictured with S2412

Top: *(Plus Size Available)* **119.-**
T2412 Diagonal Mesh Caplet Top
available in black, blue, pink, red, wine
pictured with P2401



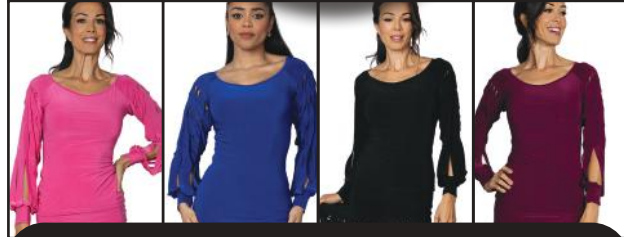
**T
O
P
S**



Top: *(Plus Size Available)* **109.-**
T2413 Asymmetric Sack Top
 available in black, blue, pink, red, wine
 pictured with S2406



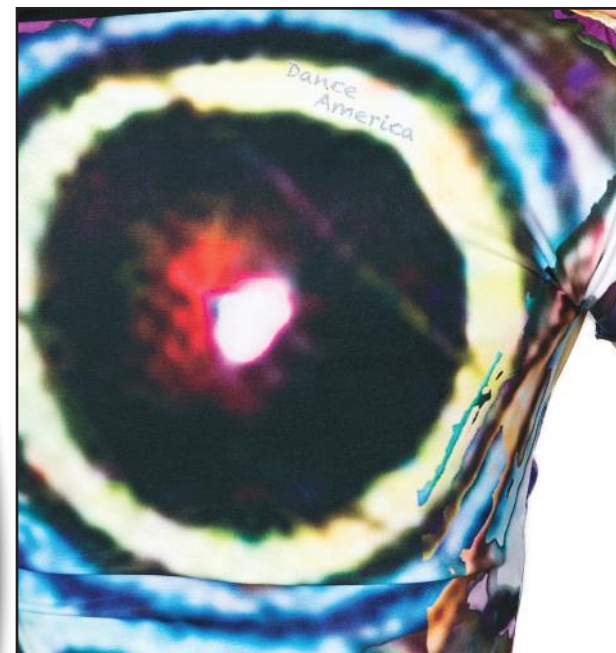
Top: **109.-**
T2414 Twist Turn Top
 available in black, blue, pink, red, wine, print
 pictured with S2411



Top: **109.-**
T2415 Top w/Band Cut Sleeves
 available in black, blue, pink, red, wine
 pictured with S2408



**T
O
P
S**



Step into a world where fashion takes flight:

with our custom-designed butterfly wing prints, featuring our signature logo.

Embrace Elegance:

Unfurl the wings of your style with our bespoke butterfly prints. Each design is a testament to beauty, crafted to add a touch of grace to your wardrobe.

Signature Sophistication:

Our iconic logo is seamlessly integrated into every print, ensuring that your fashion statement is both unique and recognizable.

Fly High with Fashion:

Why blend in when you were born to stand out? Our butterfly wing prints are not just clothing; they're a statement of freedom and individuality.



Top: *119.-*
T2416 Powermesh Stripe Top
available in black, blue, pink, red, wine
pictured with S2445



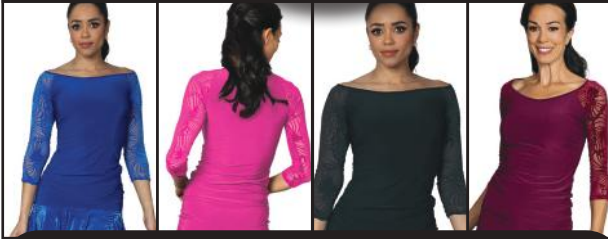
Top: *129.-*
T2417 Back tie Top
available in black, blue, pink, red, wine
pictured with P2401



VELVET TOPS



Top: *129.-*
T2420 Square Neck Velvet Top
available in black, blue, pink, red, wine
 pictured with S2421



Top: *(Plus Size Available)* *89.-*
T2421 T - Shirt top with Velvet Sleeves
available in black, blue, pink, red, wine
 pictured with S2420



Top: *(Plus Size Available)* *149.-*
T2422 Velvet Dress Top w. Camisole
available in black, blue, pink, red, wine
 pictured with P2401



RT-NEUZEHOZE TOPS



Top: *(Plus Size Available)* **239.-**
T2430 Rhinestone Diagonal Caplet Top
available in black, blue, pink, red, wine
pictured with S2441

Top: **239.-**
T2431 Rhinestone Crop Top w. Camisole
available in black, blue, pink, red, wine
pictured with S2440

Top: *(Plus Size Available)* **149.-**
T2432 T - Shirt Top with Rhinestone Sleeves
available in black, blue, pink, red, wine
pictured with S2442

FRINGE TOPS



Dense and Dynamic: With its super dense composition, the fringe provides a full, rich texture that responds dynamically to your every action, leaving a trail of awe in your wake.



Unleash the Rhythm of Style: with Our Super Dense 6-Inch Elasticated Fringe

Feel the Beat: Every step you take, every move you make, our super dense 6-inch elasticated fringe will be accentuating your rhythm. It's not just an accessory; it's a dance partner that moves with you.

Luxurious Movement: Crafted for dancers, fashionistas, and everyone in between, this fringe is designed to flow seamlessly with your body, adding a luxurious sway to every movement.

Step into the spotlight:

with our super dense elasticated fringe and let your presence be felt. It's more than fashion; it's a celebration of movement.



Top: (Plus Size Available) **139.-**
T2440 Cold Shoulder Fringe Top available in black, blue, pink, red, wine pictured with S2430 & P2411



Top: **119.-**
T2441 Fresco Fringe Top available in black, blue, pink, red, wine pictured with S2431



SKIRTS



Skirt: *(Plus Size Available)* **139.-**
S2401 Long Tulip Skirt
 available in black, blue, pink, red, wine
 pictured with T2402



Skirt: *(Plus Size Available)* **99.-**
S2402 Short Tulip Skirt
 available in black, blue, pink, red, wine
 pictured with T2406



Skirt: *(Plus Size Available)* **59.-**
S2403 Simple Skirt with Dropped Yoke
 available in black, blue, pink, red, wine
 pictured with L2402



**S
K
I
R
T
S**



Skirt : *(Plus Size Available)* **109.-**
S2404 Asymmetric Full Flounced Skirt
 available in black, blue, pink, red, wine
 pictured with T2401



Skirt : *(Plus Size Available)* **99.-**
S2405 8 Panel Simple Skirt
 available in black, blue, pink, red, wine, print
 pictured with T2403



Skirt : *(Plus Size Available)* **129.-**
S2406 Short Skirt with Powermesh
 available in black, blue, pink, red, wine
 pictured with T2413



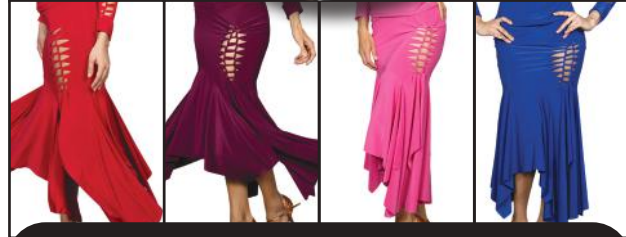
S K I R T S



Skirt : 79.-
S2407 Belted Fishtail Skirt
available in black, blue, pink, red, wine
pictured with L2401



Skirt : 139.-
S2408 Cutout Band Skirt
available in black, blue, pink, red, wine
pictured with T2409



Skirt : 139.-
S2409 Belled Carillon Skirt
available in black, blue, pink, red, wine
pictured with T2408



**S
K
I
R
T
S**



Skirt : *(Plus Size Available)* **109.-**
S2410 Belled Carillon Skirt
 available in black, blue, pink, red, wine
 pictured with T2405



Skirt : *(Plus Size Available)* **139.-**
S2411 Short 3 tiered Ruffle Skirt
 available in black, blue, pink, red, wine, print
 pictured with T2414



Skirt : *(Plus Size Available)* **169.-**
S2412 Long 3 tiered Ruffle Skirt
 available in black, blue, pink, red, wine
 pictured with T2411



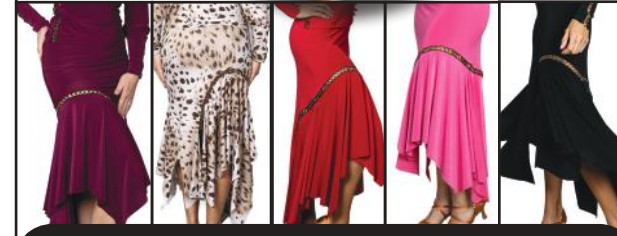
**S
K
I
R
T
S**



Skirt : *(Plus Size Available)* **149.-**
S2413 Short Flamenco Skirt
available in black, blue, pink, red, wine
pictured with L2410



Skirt : *(Plus Size Available)* **189.-**
S2414 Long Flamenco Skirt
available in black, blue, pink, red, wine
pictured with T2409



Skirt : *(Plus Size Available)* **129.-**
S2415 Circle Embelished Bell Skirt
available in black, blue, pink, red, wine
pictured with T2404



VELVET SKIRTS



Skirt : *(Plus Size Available)* **119.-**
S2420 Short Velvet Nimbus Skirt
 available in black, blue, pink, red, wine
 pictured with T2420



Skirt : *(Plus Size Available)* **159.-**
S2421 Long Velvet Burnout Skirt
 available in black, blue, pink, red, wine
 pictured with T2422

Discover the Allure of Movement with Our French Burnout Velvet on Powermesh



Elegance in Motion:

Our French Burnout Velvet is not just fabric; it's the essence of fluidity and grace. Draped over powermesh, it ensures every gesture is accentuated with a light, flowing elegance.

Sophisticated Silhouettes:

The delicate burnout patterns on the velvet create sophisticated silhouettes that dance in the light. It's a visual poetry that celebrates the art of movement.

Luxury Meets Versatility:

Whether it's for the dance floor or a night out, this material offers the perfect blend of luxury and versatility. It's where fashion meets function in the most beautiful way.

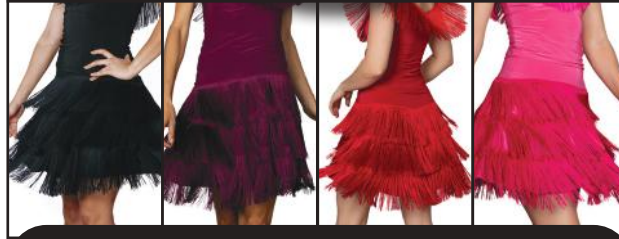




FRINGE SKIRTS



Skirt : *(Plus Size Available)* **159.-**
S2430 Diagonal Fringe Skirt
available in black, blue, pink, red, wine
pictured with T2440



Skirt : **159.-**
S2431 Short Full Fringe Skirt
available in black, blue, pink, red, wine
pictured with T2441



Skirt : **159.-**
S2432 Short Fringe Spiral Skirt
available in black, blue, pink, red, wine
pictured with T2441



SKIRTS



Skirt : 239.-
S2440 Rhinestone Handkerchief Skirt
 available in black, blue, pink, red, wine
 pictured with T2431



Skirt : (Plus Size Available) 269.-
S2441 Long Fringe and Rhinestone Gypsy Skirt
 available in black, blue, pink, red, wine
 pictured with T2430



Skirt : (Plus Size Available) 189.-
S2442 Short Fringe and Rhinestone Gypsy Skirt
 available in black, blue, pink, red, wine
 pictured with T2432



RHINESTONE SKIRTS



Skirt : *189.-*
S2443 Diagonal Rhinestone Stripe Skirt available in black, blue, pink, red, wine pictured with L2401



Skirt : *(Plus Size Available) 249.-*
S2444 Long Silhouette Skirt with Rhinestones available in black, blue, pink, red, wine pictured with T2410



Skirt : *(Plus Size Available) 189.-*
S2445 Short Silhouette Skirt with Rhinestones available in black, blue, pink, red, wine pictured with T2416



PANTS



Pants: *(Plus Size Available)* **79.-**
P2401 Yoga Pants
available in black, blue, pink, red, wine, leo
pictured with T2412



Pants: *(Plus Size Available)* **99.-**
P2402 Circle Embellished Harem Pants
available in black, blue, pink, red, wine, leo
pictured with T2404



Pants: *(Plus Size Available)* **99.-**
P2403 Palazzo Pants
available in black, blue, pink, red, wine, print
pictured with T2422



F R I N G E P A N T S



Pants: *(Plus Size Available)* **129.-**
P2404 Crochet Bell Bottom Pants
available in black, blue, pink, red, wine
pictured with T2407



Pants: *(Plus Size Available)* **269.-**
P2410 Full Fringe Pants
available in black, blue, pink, red, wine
pictured with T2441



Pants: **179.-**
P2411 Spiral Fringe Pants
available in black, blue, pink, red, wine
pictured with T2440



**D
R
E
S
S
E
S**



Dress : 179.-
D2401 Simple Short Dress w/Split Back
 available in black, blue, pink, red, wine, leo



Dress : 259.-
D2402 Simple Long Dress w/Split Back
 available in black, blue, pink, red, wine, leo



Dress : 219.-
D2403 Short Lattice Dress
 available in black, blue, pink, red, wine, print



**D
R
E
S
S
E
S**



Dress : 289.-
D2404 Long Lattice Dress
available in black, blue, pink, red, wine, print

Dress : (Plus Size Available) 189.-
D2405 Short Ruched Sweetheart Dress
available in black, blue, pink, red, wine

Dress : (Plus Size Available) 239.-
D2406 Long Ruched Sweetheart Dress
available in black, blue, pink, red, wine





Dress : *(Plus Size Available)* **219.-**
D2410 Short Velvet Burnout Dress
 available in black, blue, pink, red, wine



Dress : *(Plus Size Available)* **289.-**
D2411 Long Velvet Burnout Dress
 available in black, blue, pink, red, wine



Dress : **239.-**
D2412 Long Blouson Velvet Dress
 available in black, blue, pink, red, wine



Dress : 349.-
D2420 Full Fringe Dress
 available in black, blue, pink, red, wine

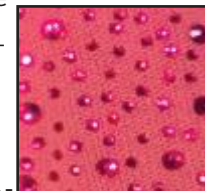
Dress : 289.-
D2421 Diagonal Fringe Dress
 available in black, blue, pink, red, wine

Illuminate Your Performance with Rhinestone Collection



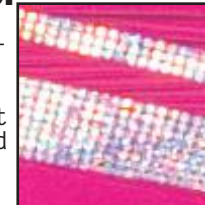
Dazzle with Every Step:

Choose from our exquisite SS16 AB rhinestone mesh, and let your outfit sparkle with every movement. The perfect blend of shine and sophistication awaits you.



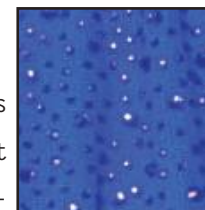
Customized Brilliance:

Our color-matched variable size rhinestone powermesh offers a personalized touch of glamour. Select the hues that best complement your style and become the embodiment of elegance.



Unmatched Radiance:

Opt for our solid rhinestone banding to make a bold statement. With this choice, you'll ensure that your presence is not just seen but felt, as you gleam under the spotlight.



Unveil the Art of Allure with Our Signature Handcrafted Crochet Details

Craftsmanship Meets Seduction: Our signature handcrafted crochet details are more than just embellishments; they are a celebration of



Strategically Sexy Cutouts:

Designed with precision, our sexy cutouts are expertly placed to offer coverage while providing tantalizing glimpses that enhance your every move. It's the perfect balance of daring and demure.

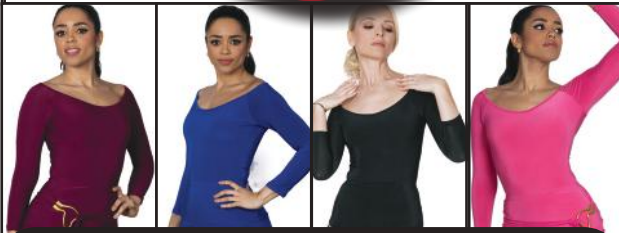
A Touch of Intrigue:

The intricate patterns of our crochet work create a captivating visual effect that's sure to draw the eye, making every movement a statement of style.

DRESSING ROOM



**L
E
O
T
A
R
D**



Leotard: 89.-
L2401 3/4 Sleeve Bodysuit
 available in black, blue, pink, red, wine
 pictured with S2407



Leotard: (Plus Size Available) 129.-
L2402 Gathered V- Neck Bodysuit
 available in black, blue, pink, red, wine, print
 pictured with S2403



Leotard: 129.-
L2410 Velvet Burnout Sweetheart Bodysuit
 available in black, blue, pink, red, wine
 pictured with S2405



AP2401

AT2402

AT2401

STYLE & COMFORT

How
Activewear
should look & feel

Pants

available in
Black and Leopard & Black and Print

AP2401: 159.-

Top

available in
Black and Leopard & Black and Print

AT2401: 109.-

Crop Top

available in
Black and Leopard & Black and Print

AT2402: 89.-



AT2402

AT2401

AP2401



M
E
N
S

W
E
A
R



Pants: 269.-
MP2 Latin Pants with
Satin Stripe



Shirt: 209.-
MS19 Collared Stripe
Inset Shirt
White & Black



Shirt: 209.-
MS8A Ruffled Tuxedo
Shirt w/out Trunks
Available in Black or White



Shirt: 209.-
MS8A Ruffled Tuxedo
Shirt with Trunks
Available in Black or White



M
E
N
S

W
E
A
R



Shirt: 209.-
MS5 Simple Shirt with Zipper
Available in Black or White



Shirt: 209.-
MS27 Belted Kimono Shirt
Available in Black



Shirt: 209.-
MS7 Mandarin Collared Shirt *Black Picot*



Pants: 219.-
MP1 Simple Latin Pants



Shirt: 209.-
MS22 Collared Shirt
Black Velvet Burnout Insets



Shirt: 119.-
MS32 Velvet Burnout Tunic w/o Trunks
Available in Black



Shirt: 209.-
MS7 Mandarin Collared Shirt
Black Stripe



M
E
N
S

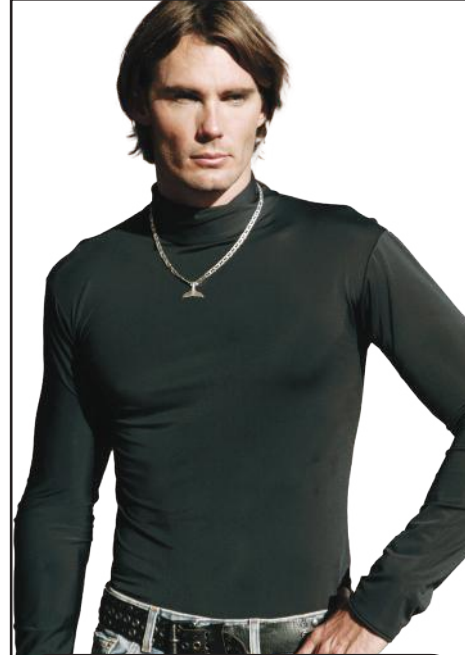
W
E
A
R



Pants: 219.-
MP1 Latin Pants



Shirt: 209.-
MS40 Stripe Sleeve Shirt
Available in Black or White



Shirt: 99.-
MS6 Simple Turtleneck with Trunks



Shirt: 209.-
MS42 Satin Collared Shirt



Vest: 159.-
MV1 Simple Vest



Shirt: 169.-
MS41 Side and Shoulder Stripe Inset Shirt
Available in Black or White



Shirt: 209.-
MS28 High Collared Tux Shirt
available in Black and White



Easily Match Outfits for Showcase or Competition

Shirt: 189.-
MS6AR Simple Turtleneck no Trunk with Rhinestone decoration
available in black, blue, pink, red, wine



Shirt: 99.-
MS6A Simple Turtleneck noTrunk
available in black, blue, pink, red, wine



M
E
N
S

W
E
A
R



Shirt: 209.-
MS20 Loose Fit Shirt w/out Trunks
Black Stripe Insets



Shirt: 209.-
MS29 Soft Collar Striped Shirt
available in Black



Shirt: 119.-
MS31 Lurex Striped Tunic w/o Trunks
available in Black



Shirt: 359.-
MS43 Rhinestone Performance Shirt
available in black, blue, pink, red, wine



Shirt: 209.-
MS21 Mandarin Striped Inset Shirt
Black Stripe Insets

Studio & Store Owners

Wholesale accounts available



Need customized Robes - Shirts - Skirts - etc. ????
 min. required amount 20 pieces
 please call for further details



Dancetrunks 29.-
DT2401

available in black, blue, pink, red, wine

Robe: 59.-
 Dance America Signature Robe
 Blue Satin & Black Satin *one size fits most*



Camisole: 39.-
C2401 Included with some garments
 available in black, blue, pink, red, wine



DA Logo Belt:
B030 29.-
 with two silver chains
B030 rhinestone 39.-
 with three silver rhinestone chains

Jogging suit: 99.-
JS2401 with Dance America Logo
 available in black/blue



Jacket : 99.-
C2401 for those cold ballrooms
 available in black, blue, pink, red, wine, leo





JR - B2
Lace

JR - S1
Lace



JR - B2
Burnout
Velvet

JR - S1
Burnout Velvet



JR - B1

JR - S2
Burnout
Velvet



JR - B1

JR - S1
Mesh



JR - B1

JR - S1
Mesh



JR - B2

JR - S2
Mesh



JR - B2
Lace

JR - S2
Lace



JR - B1

JR - S2
Mesh



JR - B1

JR - S2
Burnout
Velvet



Kid's Corner:

Please see www.dance-america.com for all shoe & clothing options available
For children shoes please turn to page 7



JR - D1



- Bodysuits:**
- JR-B1** No Sleeves Lycra only *available in black, pink, green, blue, red* 59.-
 - JR-B2** With Sleeves - Lycra *available in black, pink, green, blue, red* 69.-
 - Lace *available in black, red* 79.-
 - Burnout Velvet *available in black, pink, green, blue, red* 79.-
 - JR-B3** Puff Mesh Sleeves *available in black, pink, green, blue, red* 79.-

- Skirts:**
- JR-S1** Short Mesh Skirt *available in black, pink, green, blue, red* 59.-
 - Short Lace Skirt *available in black, red* 69.-
 - Short Burnout Velvet Skirt *available in black, pink, green, blue, red* 69.-
 - JR-S2** Long Mesh Skirt *available in black, pink, green, blue, red* 69.-
 - Long Lace Skirt *available in black, red* 79.-
 - Long Burnout Velvet Skirt *available in black, pink, green, blue, red* 79.-

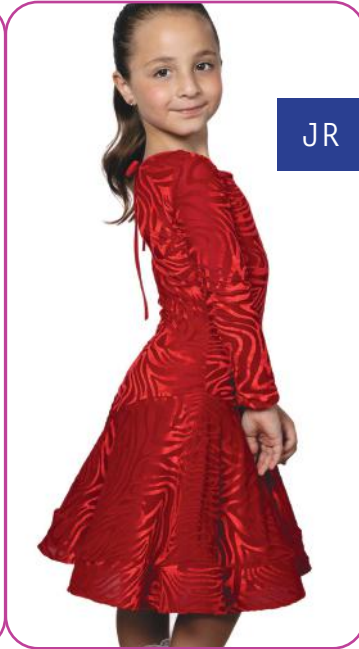
- Dresses:**
- JR-D1** Short Burnout Velvet Dress *available in black, blue, pink, red, wine* 159.-
 - JR-D2** Long Burnout Velvet Dress *available in black, blue, pink, red, wine* 189.-



JR - B1



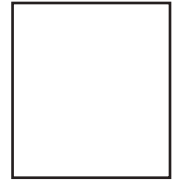
JR - D2



JR - D1



JR - S1 Mesh



GRAND NATIONAL
Championships

October 24 - October 26 2024

October 30 - November 1 2025

Miami - Doral

www.grandnationalchampionships.com

