



**O** | **ALUMNI**

JUNE 27 - JULY 6, 2025

with optional  
Oslo to Bergen Pre-Tour  
and Stockholm Post-Tour

# CRUISE THE MAJESTIC NORWEGIAN FJORDS

ABOARD PONANT'S EXCLUSIVELY  
CHARTERED, ALL-INCLUSIVE *LE LAPÉROUSE*

Orbridge

THE LAND OF LEGENDARY VIKINGS, CHARMING  
VILLAGES, ENDLESS VISTAS, CASCADING WATERFALLS  
AND GRACIOUS SCANDINAVIAN HOSPITALITY



# O | ALUMNI

Dear Alumni and Friends,

Join fellow Ducks as we seize the opportunity to experience Norway's breathtaking fjords in unparalleled luxury and style.

Cruising aboard state-of-the-art *Le Lapérouse*, ignite your inner explorer with visits to incredible UNESCO World Heritage Sites, immersive hiking and kayaking adventures and enriching cultural and historical excursions.

Accompanied by a dedicated team of expert guides who will enhance your journey, every moment promises to be one of discovery and delight.

*Le Lapérouse* expedition cruise ship will be your floating sanctuary of comfort and rejuvenation after enriching days of riveting activities. Indulge in gourmet dining, unwind in spacious staterooms and savor panoramic views throughout the vessel. We handle all the details, so you can enjoy a safe and worry-free vacation.

With significant savings of more than \$1,000 per couple, we anticipate this tour will fill quickly. To reserve visit [uo.orbridge.com](http://uo.orbridge.com) or call (866) 639-0079.

Bon Voyage and Go Ducks!



Shannon Rose-Peterson  
Director, Alumni Initiatives

Membership in the UO Alumni Association is a requirement for participation in UOAA travel programs. UOAA members can bring non-member guests as part of their travel group, even under separate reservations. To renew your membership or to join the UOAA, please visit [uoalumni.com/membership](http://uoalumni.com/membership) for more information about pricing and benefits.



# Cruise the Majestic Norwegian Fjords | Itinerary Highlights *(subject to change)*

Day 1: EN ROUTE FROM U.S.

Day 2: **ARRIVE IN BERGEN, NORWAY – EMBARKATION (R,D)** Upon arriving an Orbridge representative will be waiting to assist with your transfer to the ship. This evening gather for a special welcome reception and gala dinner.

Day 3: **GEIRANGER (B,L,D)** After lunch board a motor coach to discover one of the most scenic routes in Europe—The Eagle Road—a remarkable feat of engineering winding through steep mountain terrain with a series of hairpin bends. Stop for photography opportunities at Eagles Bend nearly 2,000 feet above sea level. Continue to Nibbevegen, the road leading to Dalsnibba, considered to be one of the most ambitious road projects in Norwegian history. Arriving at Dalsnibba Skywalk take in the crisp mountaintop air and 360° views of the surrounding UNESCO World Heritage Western Fjords. *(OPT EXCURSIONS† Kayaking; Fjord Safari)*

Day 4: **OLDEN (B,L,D)** Today visit Olden, a picturesque village nestled at the head of the Nordfjord. Journey to the summit of Mount Hoven aboard the Loen Skylift. One of the steepest in the world, this cable car provides an exhilarating ascent from the base station in Loen to the mountain peak, reaching an altitude of more than 3,280 feet in just a few minutes. The spacious gondola's large windows offer stunning panoramic views. At the summit step out onto the viewing platform for 360° views over rugged peaks and pristine valleys. Before returning to the ship see Olden Church, a charming wooden church dating back to the 18th century. *(OPT EXCURSION† Briksdal Glacier Troll Car)*

Day 5: **NORDFJORDEID (B,L,D)** Discover the rich cultural heritage and typical daily life in the Norwegian Fjords. A guided walking tour takes you past the classic architecture of the church of Eid, the cultural Opera House and traditional wooden houses. Continue to the Sagastad Viking Center to learn about Norway's Viking history. Explore interactive exhibits showcasing archaeological finds from the region and view the full-scale reconstruction of the largest Viking longship ever discovered—the Myklebust Ship. *(OPT EXCURSION† Kvalen and Nos Viewpoints)*

Day 6: **STAVANGER (B,L,D)** Disembark in Stavanger for a guided tour. Continue to Utstein Monastery, the only remaining medieval monastery in Norway, for an inside visit. Peruse the small museum, which houses artifacts and exhibits detailing the monastery's history and the daily lives of the monks who lived there. Later visit the Norwegian Petroleum Museum, which features a wealth of exhibits and information illustrating how offshore operations have become Norway's most important industry. Back on board late afternoon, retreat to the main lounge for snacks and beverages accompanied by live music.

Day 7: **SANDNES (B,L,D)** Visit the Iron Age Farm—a reconstructed farmstead from the Migration Period (350-550 AD) located on the original archaeological site. Next gather for a fish soup (or *fiskesuppe*) tasting. This hearty, comforting soup is a beloved dish that embodies the flavors and heritage of Norway's coastal cuisine. The remainder of the afternoon is yours to enjoy the amenities on board the ship.

Day 8: **ARENDAL (B,L,D)** Set off on a guided walking tour of Tyholmen, the oldest and best preserved part of Arendal. Stroll the cobblestone streets alongside fishing boats bobbing in the picturesque harbor and be transported back in time to the days of Norway's maritime past. Next visit the Arendal Maritime Museum to gain insight into the town's seafaring heritage and view exhibits showcasing traditional maritime artifacts and historic photographs.

Day 9: **GOTHENBURG, SWEDEN (B,L,R,D)** Explore the charming historic district of Haga during a guided walking tour. Enjoy leisure time before boarding a canal boat for an architectural tour. Your guide will offer insight into the city's construction and defensive designs. Afterward visit a bakery to partake in a *fika*—the tradition of sipping tea or coffee with a delicious pastry. Tonight gather for a convivial farewell reception and gala dinner.

Day 10: **OSLO – DISEMBARKATION | DEPART FOR U.S. (B)** After breakfast take a complimentary transfer to the airport for flights home.

*(† = Additional fee applies; view full details online)*

*(B = Breakfast, L = Lunch, D = Dinner, R = Reception)*



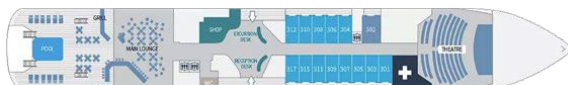


## Le Lapérouse

Accommodating 184 guests, the exclusively chartered, 430-foot *Le Lapérouse* provides environmentally conscious luxury. More than a cruise ship, she's a floating haven where elegance meets sustainability. The latest technology ensures smooth sailing, while sophisticated all-inclusive amenities cater to guests' every need. Retire to luxurious, all-balcony staterooms designed for relaxation, each providing a sanctuary of tranquility amidst the voyage's excitement.



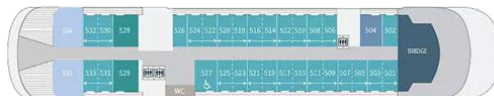
Aft Deck



Deck 3



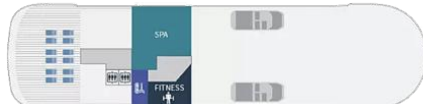
Deck 4



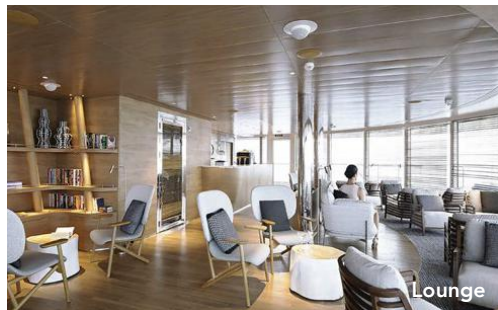
Deck 5



Deck 6



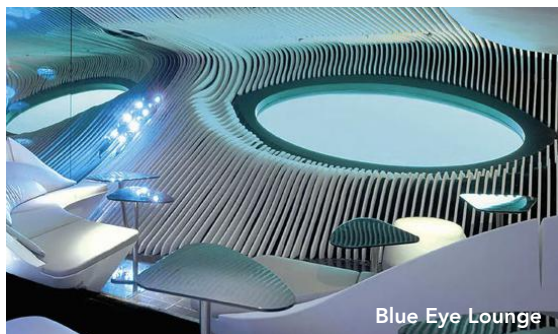
Deck 7



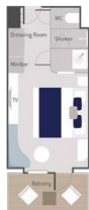
Lounge



Sauna

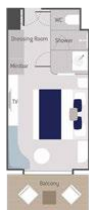


Blue Eye Lounge



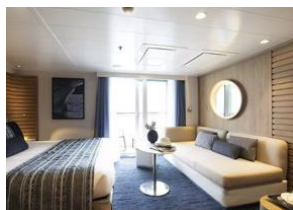
#### ■ Deluxe (Deck 3) approx. 204 sq. ft.

One king or two single beds, private bathroom with shower, glazed panoramic swing door and rectangular window, private balcony with two armchairs.



#### ■ Prestige (Decks 4, 5, 6) approx. 204 sq. ft.

One king or two single beds, one chaise lounge chair, private bathroom with shower, panoramic sliding bay window or panoramic swing door, panoramic sliding bay window, private balcony with two armchairs.



#### ■ Deluxe Suite (Decks 3, 4, 5, 6) approx. 290 sq. ft.

One king or two single beds, an armchair and sofa, private bathroom with shower, glazed panoramic swing door and panoramic window (Deck 3), panoramic sliding bay window (Decks 4, 5, 6), private balcony with two armchairs.



#### 🌿 Prestige Suite (Decks 5, 6) approx. 409 sq. ft.

Priority boarding (Deck 6), champagne and fruit basket upon arrival, assortment of sweet or savory canapés and fruit basket daily, one king or two single beds, lounge with sofa bed convertible to one king or two single bed, armchair, two TVs, sliding courtesy door, two private bathrooms with showers, two panoramic sliding bay windows, private balcony with four armchairs, butler service (Deck 6).



#### ■ Privilege Suite (Decks 5, 6) approx. 344 sq. ft.

Priority boarding, champagne and fruit basket upon arrival and assortment of sweet or savory canapés and fruit basket daily (Deck 6), one king or two single beds, lounge with chaise lounge and armchair, private bathroom with shower, panoramic sliding bay window, private balcony with two armchairs, butler service.



#### ■ Grand Deluxe Suite (Deck 6) approx. 484 sq. ft.

Priority boarding, assortment of sweet or savory canapés and fruit basket daily, one king or two single beds, lounge with sofa bed convertible to double bed, armchair, two TVs, private bathroom with shower and Baleno tub, two panoramic sliding bay windows, private terrace with two deckchairs and four-seat dining table, butler service.



#### ■ Owner's Suite (Deck 5) approx. 505 sq. ft.

Priority boarding, champagne and fruit basket upon arrival, assortment of sweet or savory canapés and fruit basket daily, one king or two single beds, lounge with armchair and double sofa bed, two TVs, private bathroom with shower, Baleno tub, and smart mirror, two panoramic sliding bay windows, one-hour spa treatment (for two), selection of premium spirits at the bar, butler service and a private terrace with jacuzzi.



## What's Included

- 8 nights aboard luxurious *Le Lapérouse*
- All onboard hand-crafted meals: 8 breakfasts, 7 lunches and 8 dinners (served with wine, beer or non-alcoholic beverages) plus special welcome and farewell receptions
- Unlimited select complimentary beverages available 24/7 on board the ship, including in the comfort of your stateroom
- Private tours and special small-group excursions as noted in the 10-day itinerary
- Full guiding services of a team of Orbridge Expedition Leaders and expert local guides
- Private motor coach transportation
- Luggage portage
- Gratuities to ship crew, Orbridge Expedition Leaders, local guides, drivers, porters and wait staff for included meals
- Airport transfers for guests arriving and departing during the suggested times



**Activity Level:** Guests should be able to enjoy two hours or more of walking, be sure-footed on cobbled surfaces, and walk up and down stairs without assistance.



**Orbridge**

## Orbridge Standard of Excellence

Orbridge understands travel today can be complicated. From cabin or room selection to airport transfers, dietary requests, or pre- or post-tour details—we are dedicated to making your journey seamless and special from the moment you leave home.

Our curated destinations—featuring outstanding properties and ships, meticulously crafted itineraries, and knowledgeable guides, travel directors and expedition leaders—offer life-changing experiences you'll never forget.

Our Guest Services team is staffed by well-traveled professionals who provide personalized attention, ensuring all your questions are answered and all the details of your trip are explained to you.

Our air partners can make flight arrangements for guests. In the event of flight delays and/or schedule changes, they will provide guests with personalized assistance. To book flight reservations with our air partners, contact (206) 319-5011 and select the option for your destination to discuss flight details with our air colleagues. Upon ticketing, a fee will be charged.

# Optional Oslo to Bergen Pre-Tour

Set off on a journey of discovery from Oslo to Bergen highlighted by vibrant cityscapes, breathtaking mountain vistas and a captivating tapestry of past and present. Experience the true essence of Norwegian splendor where charming towns, historic rail routes and towering peaks of the surrounding fjords create a picture-perfect backdrop for exploration.



**Day +1: EN ROUTE FROM U.S.**

**Day +2: ARRIVE IN OSLO, NORWAY** Upon arrival to Oslo Airport transfer to the hotel and enjoy the remainder of the day at leisure.  
Overnight: Sommerro

**Day +3: OSLO (B)** Meet with a local guide for a panoramic city tour. Visit Vigeland Park featuring an impressive collection of more than 200 bronze, granite and wrought iron sculptures depicting the human form in various poses and expressions. The park's centerpiece is an awe-inspiring granite monolith pillar rising 46 feet into the sky. Continue to the Opera House, a sleek building clad in white Italian Carrara marble with a sloping marble roof that extends seamlessly from the ground level up. Walk the gentle incline and enjoy panoramic views of the city and the Oslo Fjord. The remainder of the day is at leisure to explore independently.  
Overnight: Sommerro

**Day +4: OSLO | FLÅM (B,L)** Transfer to the Oslo train station to embark upon a scenic rail journey to Myrdal in business class seating. Transfer to the Flåm Railway for the 60-minute descent to the village of Flåm. Enjoy free time before embarking on a cruise through Nærøfjord, a branch of Sognefjord and a UNESCO World Heritage Site. The tranquil waters are surrounded by towering mountains, rugged peaks and picturesque villages along the shore.  
Overnight: Flåmsbrygga Hotel

**Day +5: FLÅM | BERGEN | MAIN PROGRAM BEGINS (B,L)** Tour Bryggen's historic district and UNESCO World Heritage Site. See Fantoft Stave Church, which gained notoriety in 1992 when it was destroyed in a suspected arson attack. Then join guests arriving for the main program.

## What's Included

- 3 nights hotel accommodations
- 3 breakfasts and 2 lunches
- Guided Oslo city tour
- Rail tickets between Oslo and Flåm
- Guided fjords tour through Sognefjord
- Guided Bergen touring
- Transportation for included tours
- Luggage portage
- Gratuities to Orbridge Travel Director, local guide, driver, porters, hotel staff and wait staff for included meals
- Airport transfers for guests arriving during the suggested times





# Optional Stockholm Post-Tour

Conclude your Scandinavian adventures with a high-speed rail trip to Stockholm, a dynamic city and economic center of Sweden. Explore its iconic streets and encounter Swedish history and allure at each turn.



**Day 10: OSLO | STOCKHOLM, SWEDEN (L)** After disembarkation board a high-speed train for the relaxing, approximate six-hour journey to Stockholm. Business class seating offers wide seats and extended legroom, coffee and tea service and complimentary Wi-Fi plus in-seat power outlets. Additional food and beverages are available for purchase in the restaurant car. Check in to the hotel and enjoy the remainder of the day at leisure. Overnight: Grand Hôtel

**Day 11: STOCKHOLM (B)** Meet with a local guide for a panoramic city tour. Stockholm boasts a blend of historic and modern architecture with striking contemporary buildings such as the Ericsson Globe Arena, Kaknä Tower and the colorful waterfront houses of Södermalm. Stop for an inside visit to City Hall known for its distinctive brick façade and towering spire. The Nobel Prize banquet is held here each year. Walk up the tower for remarkable 360° views. Continue to the Vasa Museum—an iconic compilation of exhibits that offer a fascinating glimpse into Sweden's maritime history. The centerpiece of the museum is the Vasa itself, a majestic warship that was intended to be the pride of the Swedish Navy. The ship is remarkably well-preserved, with over 95% of its original structure intact including intricate wooden carvings and ornate decorations. Conclude the day's touring at Östermalms Food Hall for lunch on your own followed by free time to explore independently. Overnight: Grand Hôtel

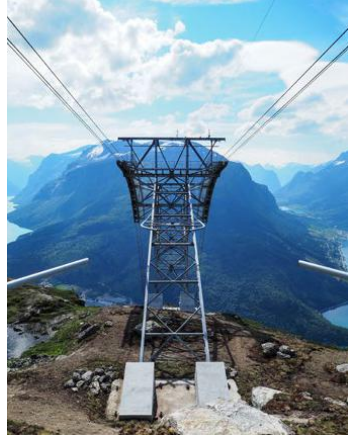
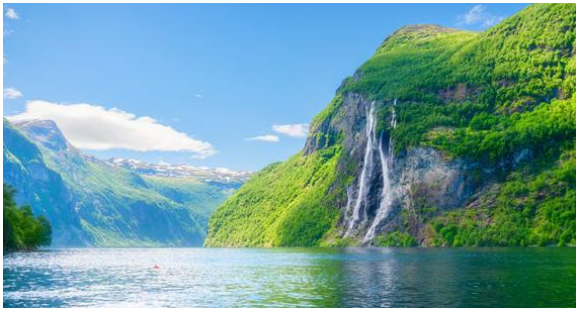
**Day 12: STOCKHOLM | DEPART FOR U.S. (B)** After breakfast take the complimentary transfer to the airport for flights home.

## What's Included

- High-speed rail tickets between Oslo and Stockholm
- 2 nights hotel accommodations
- 2 breakfasts and 1 lunch
- Guided Stockholm city tour
- Admission to the Vasa Museum
- Transportation for included tours
- Luggage portage
- Gratuities to Orbridge Travel Director, local guides, drivers, porters and wait staff for included meals
- Airport transfers for guests departing during the suggested times







**JUNE 27 - JULY 6, 2025**

Oslo to Bergen Pre-Tour: June 24-28, 2025

Stockholm Post-Tour: July 6-8, 2025

**RESERVE YOUR SPACE TODAY**

Online: [uo.orbridge.com](https://uo.orbridge.com)

Phone: (866) 639-0079

Category – Deck	Standard Rate	Special Rate*
Deluxe – 3	<del>\$7,949</del>	\$7,445
Prestige – 4	<del>\$9,349</del>	\$8,845
Prestige – 5	<del>\$10,849</del>	\$10,345
Prestige – 6	<del>\$11,249</del>	\$10,745
Deluxe Suite – 3	<del>\$11,949</del>	\$11,445
Deluxe Suite – 4	<del>\$12,949</del>	\$12,445
Deluxe Suite – 5	<del>\$14,349</del>	\$13,845
Deluxe Suite – 6	<del>\$15,249</del>	\$14,745
Prestige Suite – 5	<del>\$19,349</del>	\$18,845
Prestige Suite – 6	<del>\$20,149</del>	\$19,645
Privilege Suite – 5,6	<del>\$17,949</del>	\$17,445
Grand Deluxe Suite – 6	<del>\$19,949</del>	\$19,445

Category – Deck	Standard Rate	Special Rate*
Owner's Suite – 5	<del>\$20,949</del>	\$20,445
Single Deluxe – 3	<del>\$14,149</del>	\$13,645
Single Prestige – 4	<del>\$14,949</del>	\$14,445
Single Prestige – 5	<del>\$16,949</del>	\$16,445
Single Prestige – 6	<del>\$17,949</del>	\$17,445

*Category rates include the required  
\$450 per person port fee.*

Oslo to Bergen Pre-Tour\* \$2,695 | Single \$3,595  
Stockholm Post-Tour\* \$1,895 | Single \$2,795

**DEPOSIT AMOUNT PER PERSON**  
\$500 pre-tour • \$850 main tour • \$500 post-tour

\*Special group rates; limited offer. All rates are per person in U.S. dollars based on double occupancy except where noted as Single. Single availability limited. Unless noted otherwise, airfare is not included. \*\*An exclusive Early Booking Bonus, Expedition Libraries are curated collections of useful resources and background reading tailored to this program. Place your deposit on or before the specified date, and one Expedition Library per room will be sent after receipt of final payment. Libraries may be purchased; call for details. Full Terms & Conditions at [terms.orbridge.com](https://terms.orbridge.com). Any payment to Orbridge, LLC constitutes your acceptance of the terms and conditions set out therein, including but not limited to the cancellation and refund terms. CST#2098750-40 WST#602828994

Orbridge takes seriously the responsibility to minimize our global environmental impact. Each year we plant 100,000 trees in U.S. State Forests with afforestation needs as an ongoing initiative among our evolving sustainability efforts. Learn more at [orbridge.com/going-green](https://orbridge.com/going-green).





University of Oregon Alumni Association  
UO Alumni Travelers  
1204 University of Oregon  
Suite 119  
Eugene, OR 97403

## CRUISE THE MAJESTIC NORWEGIAN FJORDS

JUNE 27 - JULY 6, 2025

**Special Alumni Rate:**

**Save more than \$1,000 per couple**

**30-DAY REFUND GUARANTEE**

**FREE EXPEDITION LIBRARY**  
AN EXCLUSIVE EARLY  
RESERVATION BONUS

Reserve by

**March 28, 2025\*\***

PRRST STD  
U.S. POSTAGE  
PAID  
PERMIT NO. 825  
SAN DIEGO, CA