



Airfields // Highways // Off-Highways // Civils & Maintenance

GROOVING FOR AVIATION, HIGHWAYS AND LIVESTOCK

High-Performance Delivery for the
Built Environment.



Safely Marking
The Way Ahead
jointline.co.uk



Jointline offers precision grooving services tailored for airfield runways, highways, and livestock facilities, ensuring safety, durability, and efficiency.

With over three decades of experience, Jointline excels in providing tailored grooving services for a wide range of applications, including airfield runways, highways, and livestock facilities. Our commitment to precision and safety sets us apart in the industry, ensuring that each project receives a customised solution to meet its specific needs.

Our reputation is built on a deep knowledge base and a track record of expertise in grooving services. This reputation has made us the trusted choice for defence organisations, commercial aviation leaders and livestock operators, not only in the UK but around the world. We understand the importance of minimising disruptions, especially in time critical operations. That's why we operate a fleet of purpose-built vehicles allowing us to work efficiently within tight time frames and always with a strong emphasis on safety.

Choose Jointline for grooving services that combine expertise with a commitment to safety and quality.





INDEX

About Jointline Limited	2
Aviation	4
Highways	6
Livestock	8
Quality, Safety, Health and Environment	10
Social Value	12
Work With Us	14
Portfolio	16



AVIATION

Elevating Airfield Safety with Jointline's Precision Grooving.

At Jointline, we understand that ensuring the safety of your airfield operations is paramount.

With a wealth of experience in the installation of anti-skid grooving on airfields across the UK and worldwide, we offer a comprehensive service that not only displaces water but also significantly enhances surface friction, ultimately safeguarding the safety of pilots, passengers and airside ground staff.

Key Advantages of Jointline's Grooving Expertise:

- > **Proven Experience:** Jointline boasts a strong track record in installing anti-skid grooving on airfields worldwide, promoting safer take-off's and landings.
- > **Friction Optimization:** Grooving involves creating horizontal surface grooves, expediting water dissipation and reducing aquaplaning risks, thus enhancing surface friction.

- > **NASA-Endorsed Method:** NASA has confirmed that properly grooved runways maintain a co-efficient of friction equivalent to 85% of dry conditions, a testament to this method's safety and efficacy.
- > **Advanced Equipment:** Our state-of-the-art equipment, including the "Cushion Cut" machine, delivers precision grooving while vacuuming up spoil, ensuring cleanliness and efficiency.
- > **Tailored Solutions:** Every airfield is unique, and Jointline customizes grooving depths and spacing to optimize water dissipation for your specific surface.
- > **Safety Focus:** Safety is paramount at Jointline. Our experienced operatives adhere to the highest industry safety standards.

Benefits to Airfield Safety

- > **Enhanced Friction:** Increased surface friction reduces skidding risks during take-off's and landings.
- > **Aquaplaning Prevention:** Grooving swiftly dissipates water, lowering the likelihood of aquaplaning on runways, taxiways, and service roads.
- > **Cost-Effective Solution:** Grooving is a proven, cost-effective method to enhance wet weather safety without excessive costs.
- > **NASA-Backed Safety:** Jointline's grooving expertise aligns with NASA's high safety standards.
- > **Customized Approach:** Tailored solutions ensure maximum water dissipation and safety for your unique airfield.
- > **Safety Standards:** Our skilled operatives prioritise safety, adhering to industry safety standards.





HIGHWAYS

Transforming Roads for Safety and Efficiency.





At Jointline, we utilise state-of-the-art equipment and the most advanced techniques in the industry to cut precise grooves into asphalt and concrete surfaces. Our grooving process is meticulous and efficient, involving the creation of strategically placed channels in the pavement, facilitating the displacement of water and increasing friction. This innovation is particularly critical in areas with high traffic volumes and inclement weather conditions, where safety is paramount.

Key Benefits for Road Users and Drivers

- > **Enhanced Hydroplaning Resistance:** Jointline's grooving services significantly reduce the risk of hydroplaning by redirecting water away from the tire contact area. This ensures that drivers can maintain better control of their vehicles even in wet conditions.
- > **Improved Skid Resistance:** The grooves created by our process enhance friction between tires and the road surface. This increased skid resistance translates to reduced stopping distances, promoting safer driving.
- > **Reduced Spray and Splash:** Grooved surfaces minimize water spray and splash, thereby enhancing visibility for both drivers and pedestrians. This improvement reduces the risk of accidents, especially during heavy rain.
- > **Better Drainage:** Jointline's grooving ensures

efficient water drainage, preventing the accumulation of puddles or standing water on the road surface. This reduces the likelihood of aquaplaning and enhances the overall safety of the road.

- > **Longer Pavement Lifespan:** By preventing water intrusion and minimizing surface wear, our grooving services extend the lifespan of asphalt and concrete surfaces. This translates to significant cost savings for local authorities and managers responsible for road maintenance.

Why Choose Jointline?

- > **Expertise and Experience:** With decades of experience in the industry, Jointline has honed its grooving capabilities to perfection. Our teams are well-versed in the nuances of road safety and efficiency.
- > **Cutting-Edge Technology:** Jointline consistently invests in the latest equipment and technology to ensure that our grooving services remain at the forefront of the industry.
- > **Cost-Efficiency:** Our grooving solutions not only enhance safety but also represent a cost-effective option for road maintenance. The extended lifespan of the pavement means reduced overall expenditure for local authorities.

- > **Compliance and Quality Assurance:** We adhere to the highest quality and safety standards. Our services comply with all relevant regulations and industry best practices, providing peace of mind to our clients.



LIVESTOCK

Jointline is your premier partner in the field of grooving capabilities, dedicated to revolutionising your livestock sheds for optimal safety and animal welfare.

We understand that a well-designed environment is crucial for livestock management, and our grooving services are tailored to meet the unique needs of farmers and landowners. By effectively displacing water and increasing friction in your cattle or livestock sheds, Jointline ensures that your livestock experience a safer and more comfortable habitat.

The Benefits of Jointline's Grooving Services:

Enhanced Animal Safety:

- > Reduced Slip and Fall Risks: Our grooves significantly decrease the likelihood of animals slipping on wet surfaces, reducing injuries.
- > Stable Footing: Livestock can walk, stand, and move with confidence in grooved areas, preventing potential accidents.

Improved Animal Welfare:

- > Reduced Stress: Grooved surfaces reduce stress levels in livestock by providing a more secure and comfortable environment.
- > Better Hoof Health: Livestock with improved footing experience less strain on their hooves, contributing to long-term hoof health.

Water Displacement:

- > Efficient Water Runoff: The grooves effectively displace water, preventing puddles and stagnant water, which can lead to hygiene issues.
- > Clean Environment: A dry and clean environment is crucial for animal well-being and disease prevention.

Optimal Drainage:

- > Reduced Humidity: Proper drainage ensures that the shed's interior remains dry and less humid, promoting a healthier atmosphere for livestock.
- > Prevention of Mould Growth: Effective drainage minimizes the growth of harmful mould, safeguarding both animals and feed quality.

Cost Savings:

- > Reduced Maintenance: Grooved floors require less maintenance and repair, saving time and money.
- > Longer Lifespan: Grooved concrete surfaces have a longer lifespan, reducing the need for frequent replacements.

Customised Solutions:

- > Tailored Design: We provide grooving solutions that cater to your specific livestock needs, ensuring maximum benefits for your sheds.
- > Experienced Experts: Our team of skilled professionals ensures precision and quality in every project.

Compliance with Regulations:

- > Meeting Standards: Our grooving services help you meet regulatory requirements, ensuring that your livestock sheds comply with industry standards.
- > Peace of Mind: Avoid potential legal issues by having grooved surfaces that adhere to safety guidelines.

Increased Productivity:

- > Less Stress, More Production: Comfortable animals are more productive, translating to better yields.
- > Improved Handling: Easier movement and handling of livestock in grooved areas contribute to efficient farm operations.

Environmental Responsibility:

- > Water Conservation: Effective water displacement promotes responsible water usage and minimizes environmental impact.
- > Sustainable Farming: Enhance your farm's sustainability by creating a healthier and safer environment for your livestock.



QUALITY, SAFETY, HEALTH & ENVIRONMENT

Jointline places paramount importance on Quality, Safety, Health, and Environment (QSHE) across all operations. Our QSHE policies are designed to ensure that every project is executed with the highest standards of safety and environmental stewardship.

We are committed to:

- > **Quality:**
Adhering to industry best practices and standards, ensuring that our projects meet or exceed client expectations. Our certifications and accreditations, including BBA and ISO standards, reflect our dedication to maintaining excellence.
- > **Safety:**
Promoting a safety-led culture where all employees are empowered to check, challenge, and change unsafe practices. Our safety protocols are designed to protect the public or those local to our schemes as well as our own workforce, ensuring a secure working environment.
- > **Health:**
Implementing robust health management systems to protect the well-being of our workforce. We prioritise health and safety through regular training, risk assessments, and proactive initiatives.
- > **Environment:**
Minimising environmental impact through sustainable practices and responsible resource management. Our projects incorporate environmentally friendly materials and methods, reducing our carbon footprint and promoting ecological balance.



SOCIAL VALUE

We believe in making a positive impact on the communities we serve by fostering economic, social, and environmental well-being.

- > **Community Engagement:**
Actively involving local communities in our projects to ensure that their needs and concerns are addressed. We work closely with community stakeholders to enhance public spaces and support local development.
- > **Local Employment:**
Prioritising the hiring of local talent and suppliers to boost the local economy and create job opportunities. We are committed to providing training and apprenticeship programs to develop skills within the community.
- > **Sustainable Practices:**
Implementing environmentally sustainable practices in all our projects to protect and enhance the natural environment. We focus on reducing waste, conserving resources, and using eco-friendly materials.
- > **Charitable Support:**
Supporting local charities and community initiatives through donations, sponsorships, and volunteer efforts. We encourage our employees to participate in charitable activities and give back to the community.
- > **Education and Outreach:**
Partnering with local schools and educational institutions to promote STEM (Science, Technology, Engineering, and Mathematics) education. We offer site visits, workshops, and work experience to inspire the next generation of engineers and civils professionals.



We are dedicated to creating social value through our operations and projects.



WORK WITH US

At Jointline,
we are always
looking to
collaborate with
clients, partners,
and talented
professionals
who share our
commitment to
excellence and
innovation.

Working with us means becoming part of a culture that values quality, safety, and sustainability.

> *Clients:*

We provide bespoke, end-to-end solutions tailored to meet your specific project needs. Our multidisciplinary expertise ensures that we can handle all aspects of your project, delivering exceptional results on time and within budget.

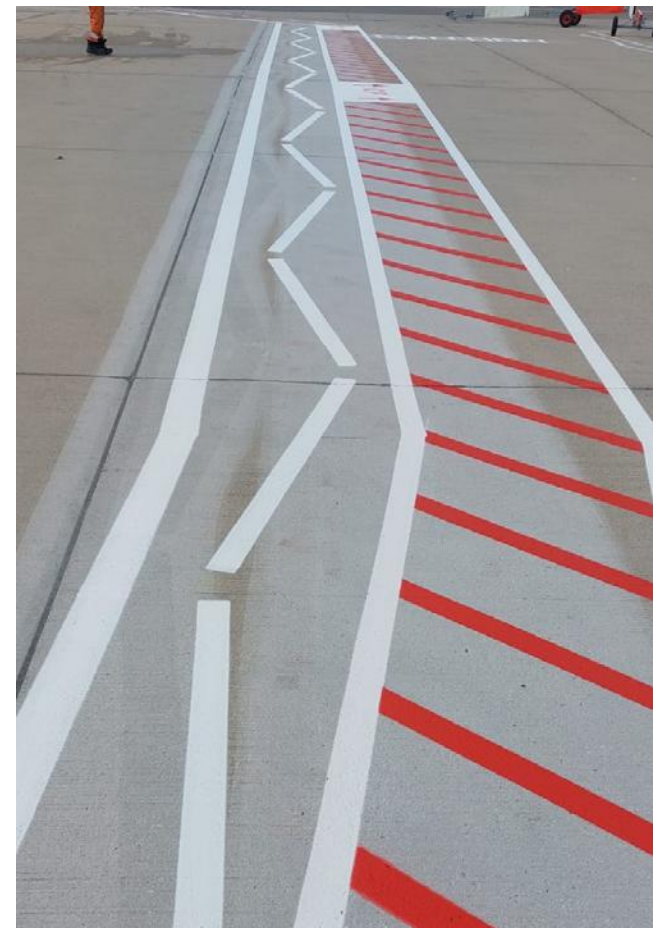
> *Partners:*

We believe in building strong, collaborative relationships with our partners. Whether you are a supplier, subcontractor, or consultant, we work together to achieve shared goals and deliver superior outcomes.

> *People:*

Join our dynamic team and be a part of a company that values professional growth and development. We offer competitive benefits, ongoing training, and opportunities for career advancement. Explore our current job openings and apply to become part of the Jointline family.



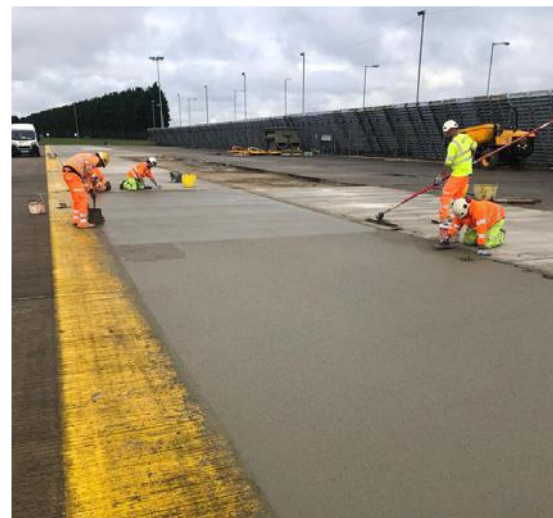
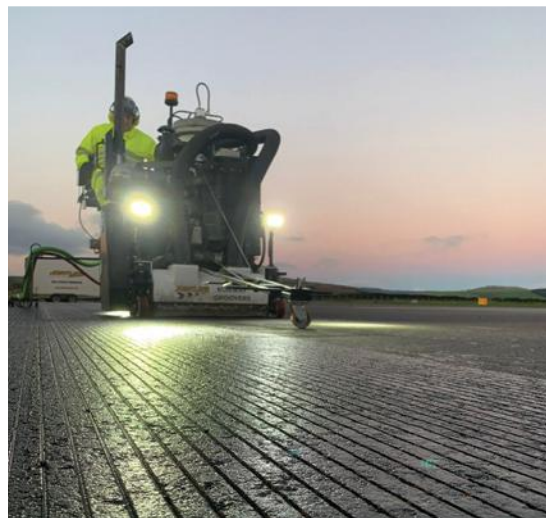


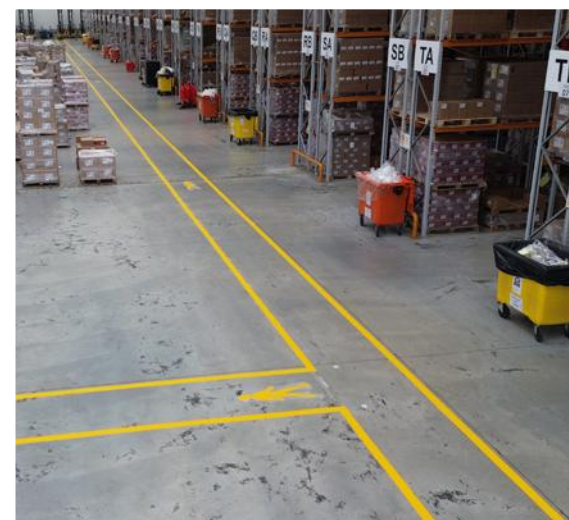
For more information on working with us, please contact us at:

Jointline Limited
Airfield View, Camp Road
Witham St Hughs
Lincoln, LN6 9TW

01522 868 636
info@jointline.co.uk
jointline.co.uk









Safely Marking
The Way Ahead
jointline.co.uk

Midlands Depot: Airfield View, Camp Road, Witham St Hughes, Lincoln, LN6 9TW - 01522 868636
Northern Depot: Spartan Road, Low Moor, Bradford, BD12 0RY - 01274 736 504
info@jointline.co.uk | <https://jointline.co.uk>

