



335

335 ST CLAIR AVENUE EAST
MOORE PARK



WELCOME TO 335 ST CLAIR AVENUE EAST

Set in the heart of Moore Park, 335 St Clair Avenue East is a thoughtfully reimagined residence that seamlessly blends timeless architecture with a striking modern addition by acclaimed architects Bruce Kuwabara and Thomas Payne. Designed to maximize light, flow, and livability, the home unfolds with expansive principal spaces and a refined connection between indoors and out. With generous proportions, flexible living across multiple levels, and a beautifully finished backyard, this home offers an exceptional opportunity to experience elevated family living in one of Toronto's most established and sought-after neighbourhoods.

Defined by the remarkable main floor addition, this home delivers a rare blend of architectural pedigree and everyday livability. The addition provides a loft-like space and is a true showpiece, utilizing glass block, metal, and marble combine in a light-filled design that feels both dramatic and inviting, equally suited to quiet nights or lively gatherings. This is a home that knows how to host.

Set in the heart of Moore Park, one of Toronto's most sought-after neighbourhoods, it offers access to an exceptional school district, including Whitney Junior Public School. Wide plank hardwood floors run throughout, complemented by sleek contemporary bathrooms and a beautifully appointed, family-sized kitchen designed for both daily living and effortless entertaining. The fully finished lower level adds outstanding flexibility and features a separate entrance, making it ideal for a private in-law or caregiver suite, or a versatile recreation space. With prestigious schools, convenient access to transit, and the unmatched lifestyle of this prime location, this home offers a rare opportunity to own something truly special.















FEATURES OF THE HOME

Main Floor

- Spacious foyer with closet
- Two-piece powder room
- Open dining area flowing into kitchen
- Large kitchen island with seating and wet bar
- Architect-designed rear addition by Bruce Kuwabara & Thomas Payne
- Expansive living space with built-ins and wood-burning fireplace
- Radiant heating in addition
- Walkout to backyard deck

Second Floor

- Primary bedroom with ensuite bathroom
- Access to oversized private terrace
- Two additional bedrooms
- Four-piece bathroom

Third Floor

- Skylit office or workspace
- Expansive flexible room ideal as family space, studio, or bedroom

Lower Level

- Open-concept recreation space
- Three-piece bathroom
- Separate side entrance
- Potential for income-generating suite
- Laundry area rough-in

Outdoor Space

- Fully interlocked backyard
- Additional rear parking capability
- Access via mutual driveway

INCLUSIONS

- LG dishwasher
- LG ThinQ refrigerator and freezer
- LG stove and oven
- LG microwave and hood vent
- LG washer and dryer
- Five kitchen island barstools
- Comfort Star A/C units (main, second, and third floors)

PROPERTY DETAILS

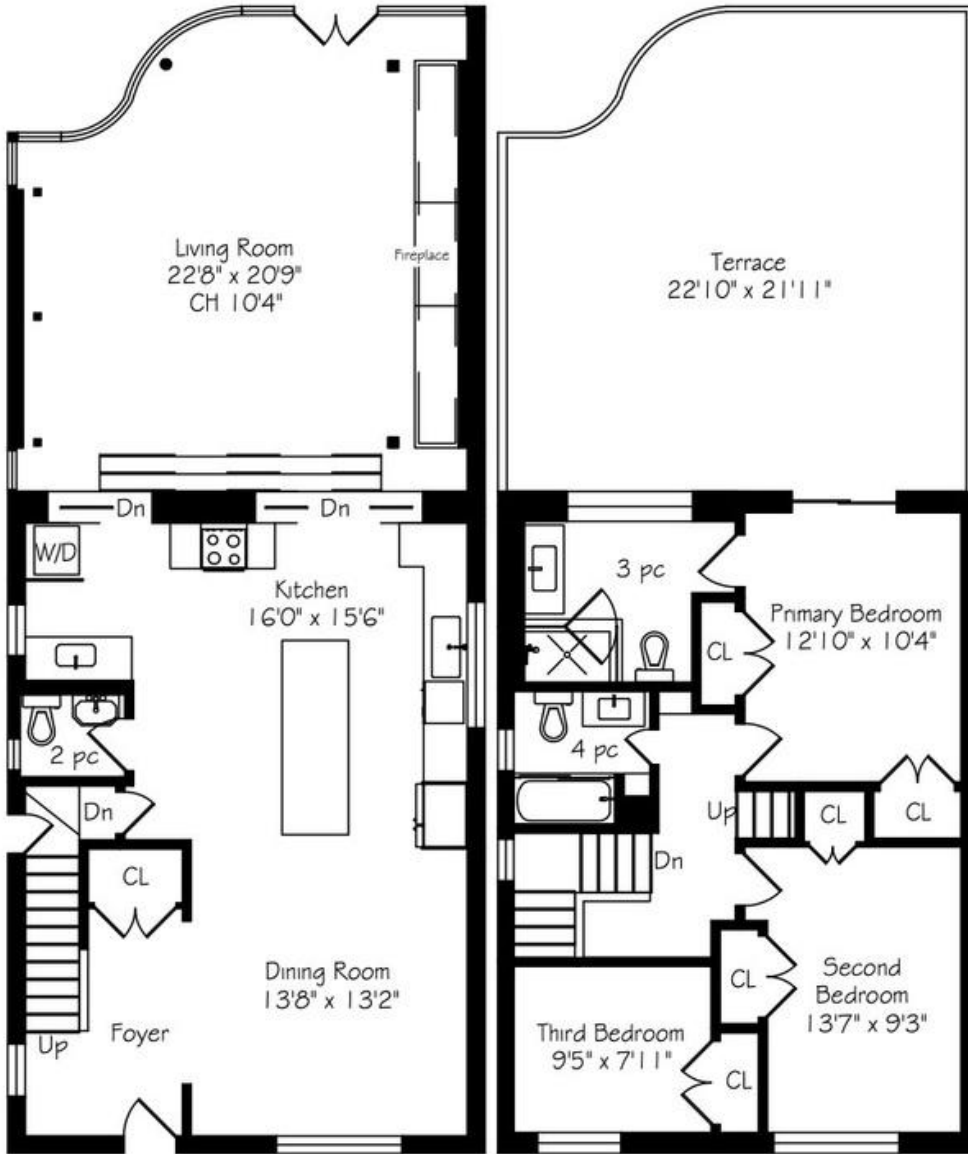
- Property Type: Detached
- Ownership: Freehold
- Lot Size: 30.11 ft x 143.5 ft
- Zoning: Residential (RD)
- Driveway: Mutual/Shared

TAXES

- Estimated Property Taxes (2025): \$10,564.76

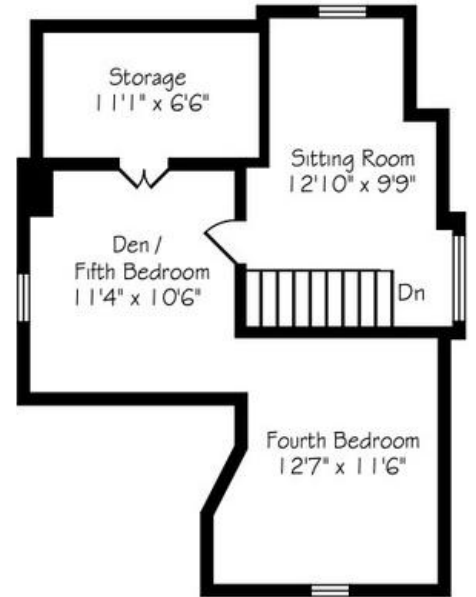
335 ST CLAIR AVENUE EAST

FLOOR PLANS

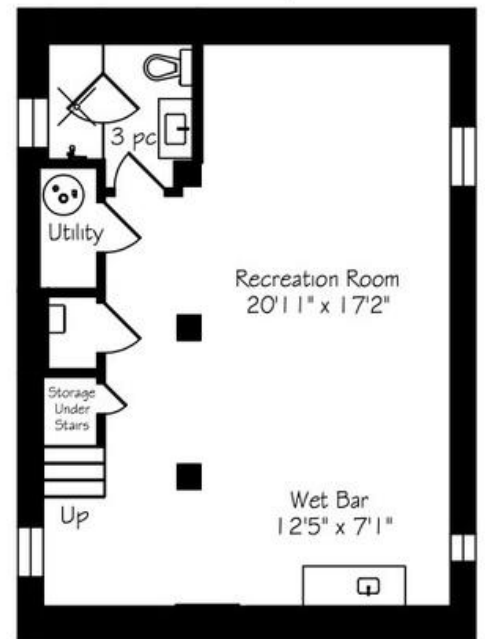


Main Floor
1202 Square Feet

Second Floor
716 Square Feet



Third Floor
544 Square Feet



Lower Level
716 Square Feet



ELEVATE YOUR EXPECTATIONS



JEANNINE VOLPE

Real Estate Agent

416.573.6777

jeannine@heapsestrin.com



HEAPS ESTRIN

REAL ESTATE TEAM

For Royal LePage Real Estate Services Heaps Estrin Team, Brokerage. All information and statements contained herein, provided by Royal LePage Real Estate Services Heaps Estrin Team, Brokerage regarding property for sale, rental or financing is from sources deemed reliable and assumed correct, but no warranty or representation is made as to the accuracy thereof and same is submitted subject to errors, omissions, changes in price, rental or other conditions, prior sale or withdrawal without notice.

Royal LePage Real Estate Services Heaps Estrin Team, Brokerage Independently Owned and Operated