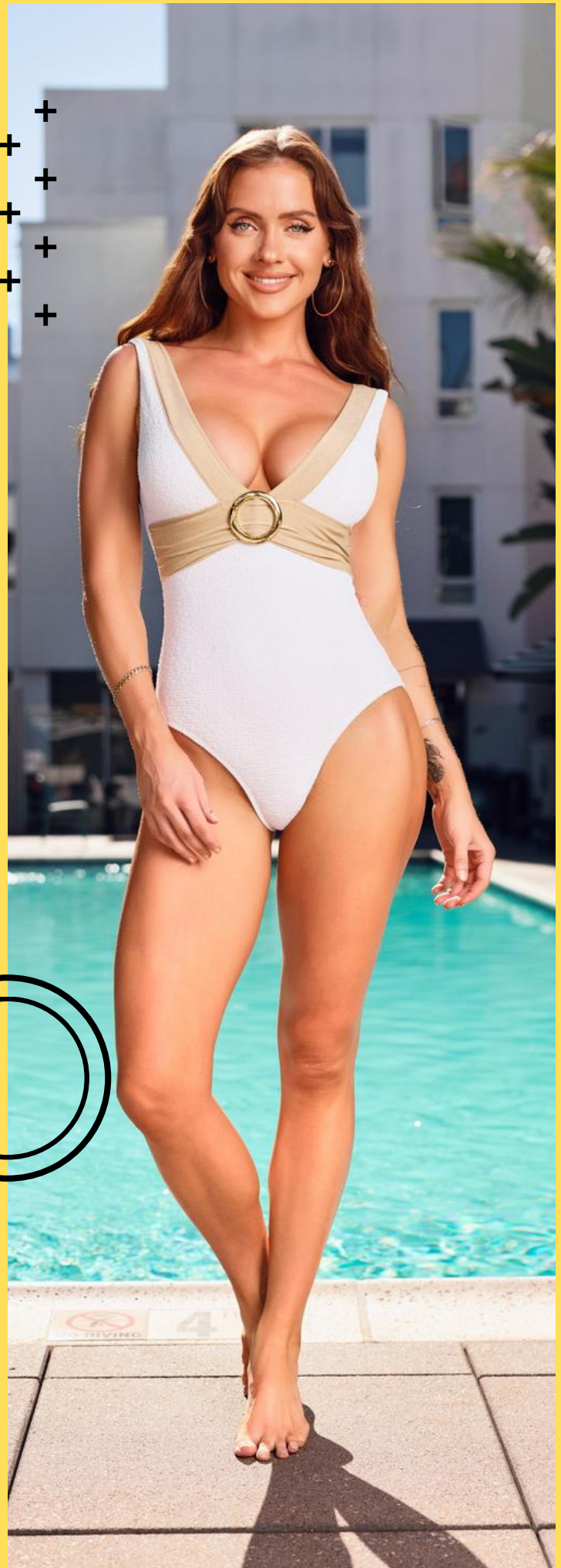
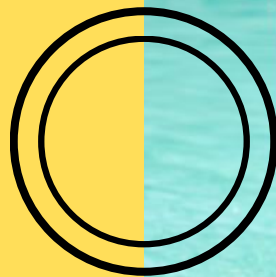


*Stylish Swimwear*  
Flattering styles you want to wear

# 2024 CATALOG

Make a splash  
with Stylish Swimwear



# Textured One Piece

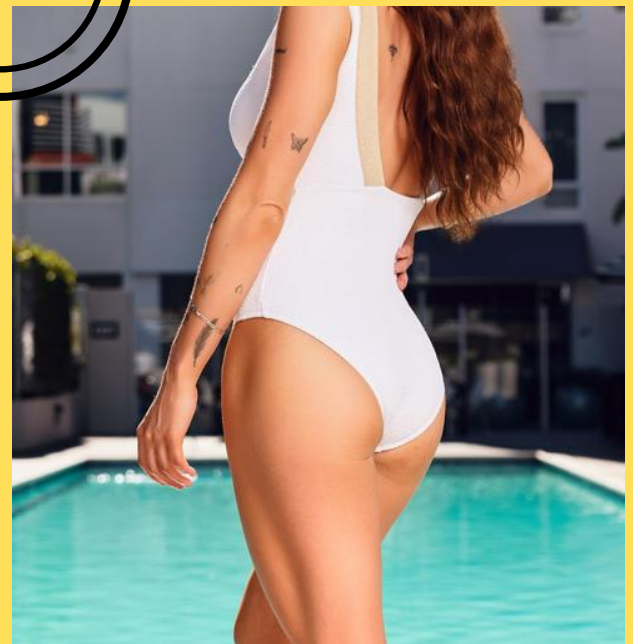
Textured one piece with  
an open back

## Product Info:

Make: 82% Nylon, 18% Spandex

Pack: 2S - 2M - 2L

Colors: White, Black



**H3059**

# Belted Hard Cup

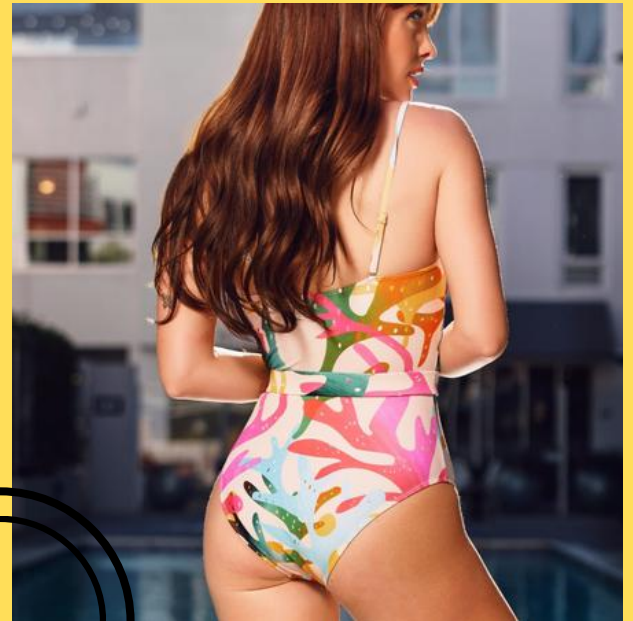
Belted hard cup one piece with spaghetti straps

## Product Info:

Make: 82% Nylon, 18% Spandex

Pack: 2S - 2M - 2L

Colors: Tie Dye



**Y929**

# Hard Cup Basic

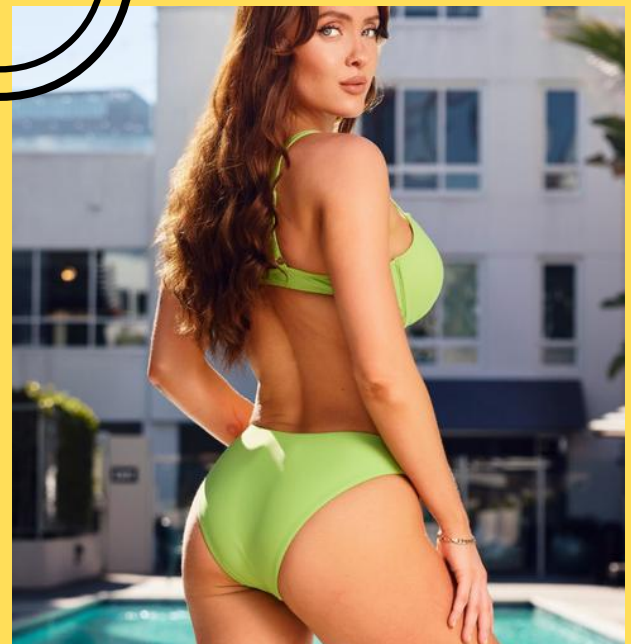
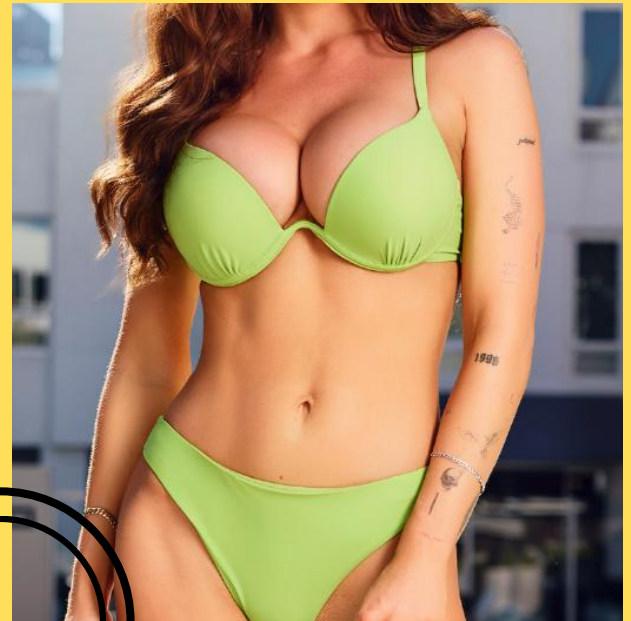
Solid hard cup bikini  
with basic design

## Product Info:

Make: 82% Nylon, 18% Spandex

Pack: 2S - 2M - 2L

Colors: Green, Black, Orange



**Y936**

# Hard Cup Floral

Floral hard cup one piece with spaghetti straps

## Product Info:

Make: 82% Nylon, 18% Spandex

Pack: 2S - 2M - 2L

Colors: Mint, White



**H3040**

# Long Sleeve High Cut

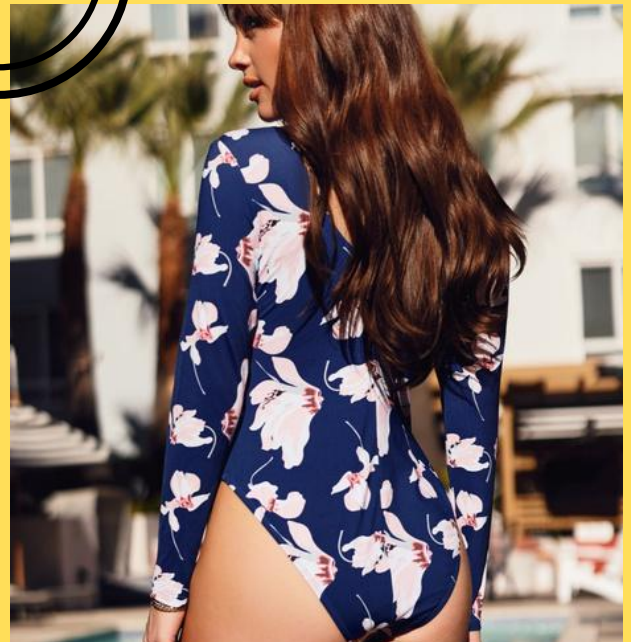
Long sleeve floral one piece with high cut design

## Product Info:

Make: 82% Nylon, 18% Spandex

Pack: 2S - 2M - 2L

Colors: Floral, Blue



**H3046**

# Embroidered Halter

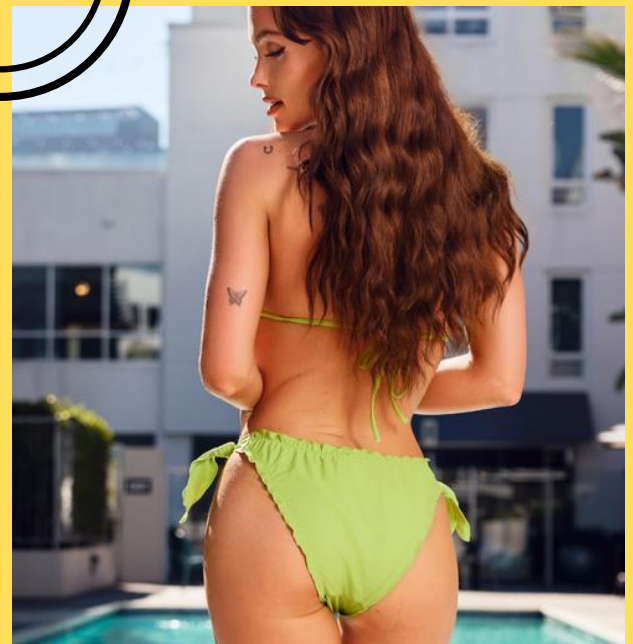
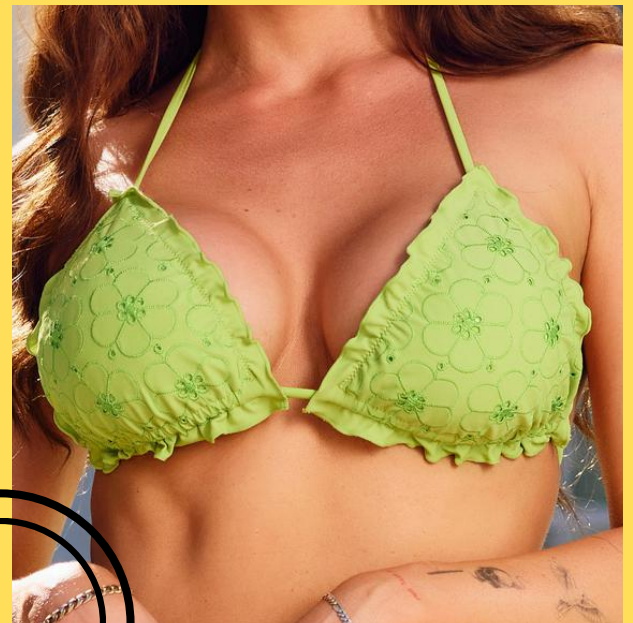
Ruffled hem bikini with embroidered design halter top and tied bottoms

## Product Info:

Make: 82% Nylon, 18% Spandex

Pack: 2S - 2M - 2L

Colors: Green, White



**Y932**

# Textured Bikini

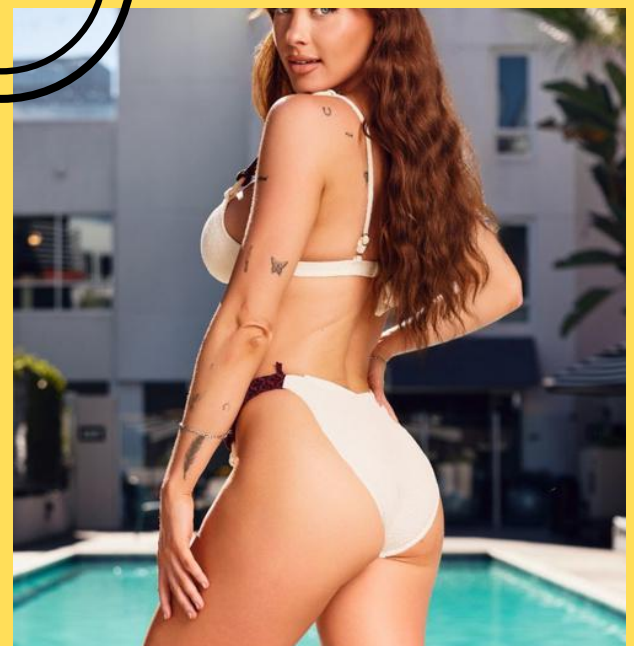
Textured bikini with woven straps

## Product Info:

Make: 82% Nylon, 18% Spandex

Pack: 2S - 2M - 2L

Colors: White, Burgundy



**H3055**



# Cut Out Floral

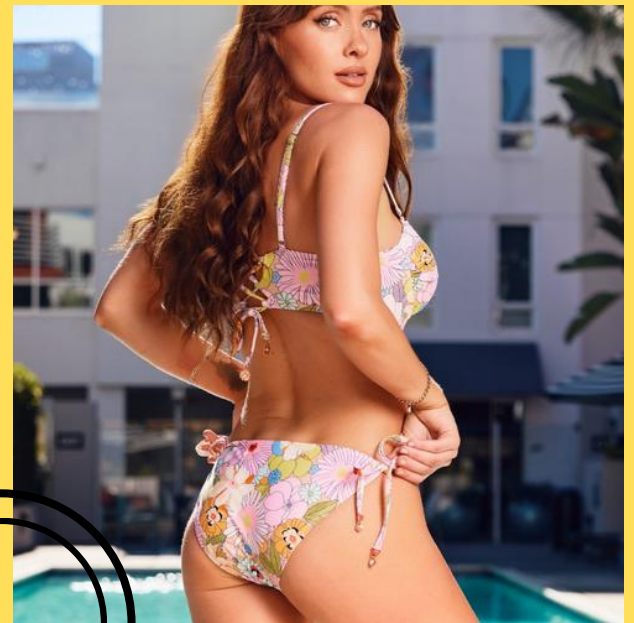
Cut out floral one piece  
with string-tied bottoms  
and spaghetti straps

## Product Info:

Make: 82% Nylon, 18% Spandex

Pack: 2S - 2M - 2L

Colors: As Shown



**H3047**

# Swirling Floral

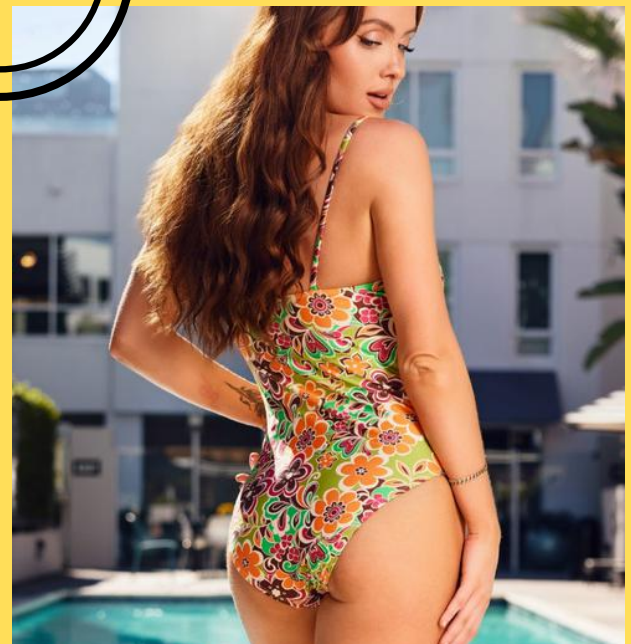
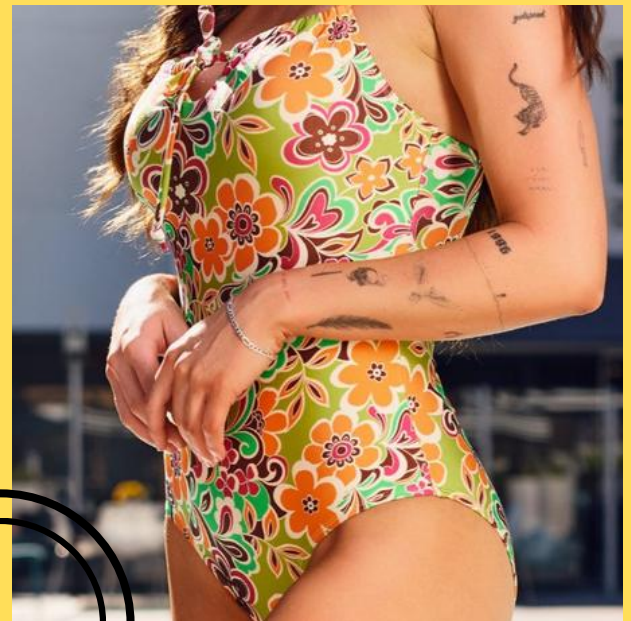
Floral patterned one piece with front tie and spaghetti straps

## Product Info:

Make: 82% Nylon, 18% Spandex

Pack: 2S - 2M - 2L

Colors: As Shown



**H3038**

# Twisted Bikini

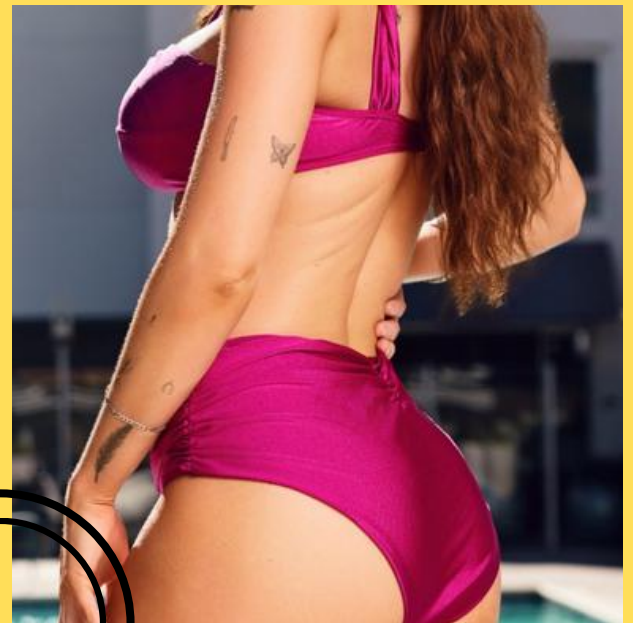
Twist bikini top with wrapped bottoms

## Product Info:

Make: 82% Nylon, 18% Spandex

Pack: 2S - 2M - 2L

Colors: Purple, Black



**H3050**

# Cut Out One Shoulder

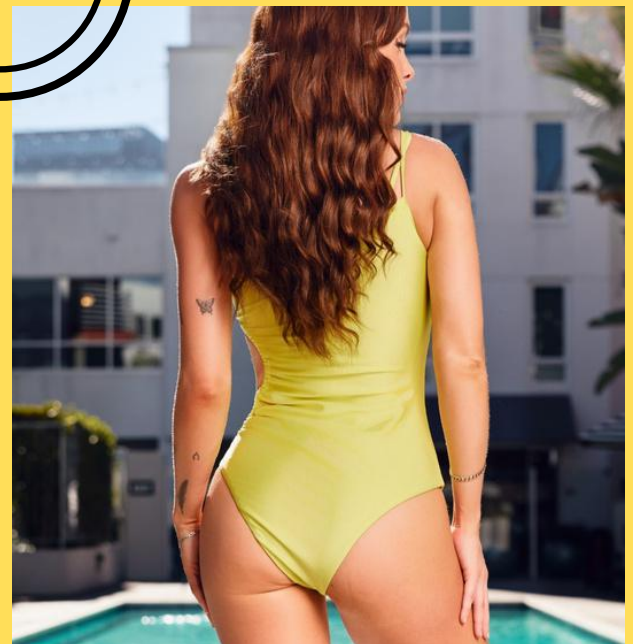
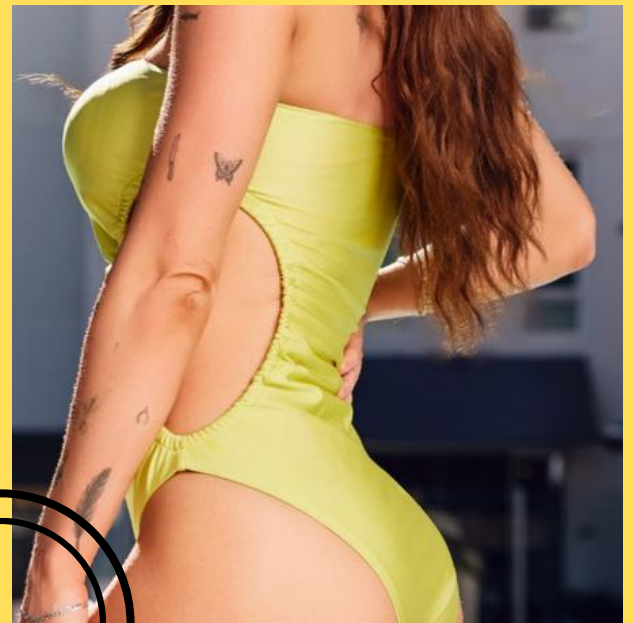
Solid one shoulder one  
piece with cut out sid

## Product Info:

Make: 82% Nylon, 18% Spandex

Pack: 2S - 2M - 2L

Colors: Yellow



**H3053**

# High Waist Floral

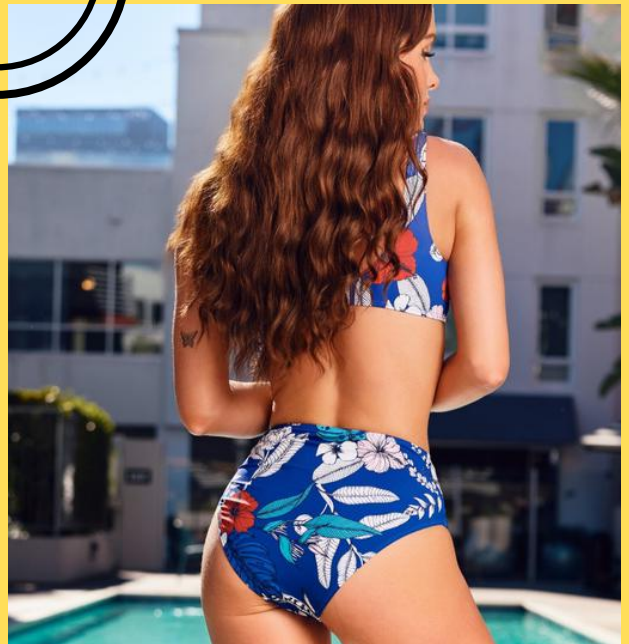
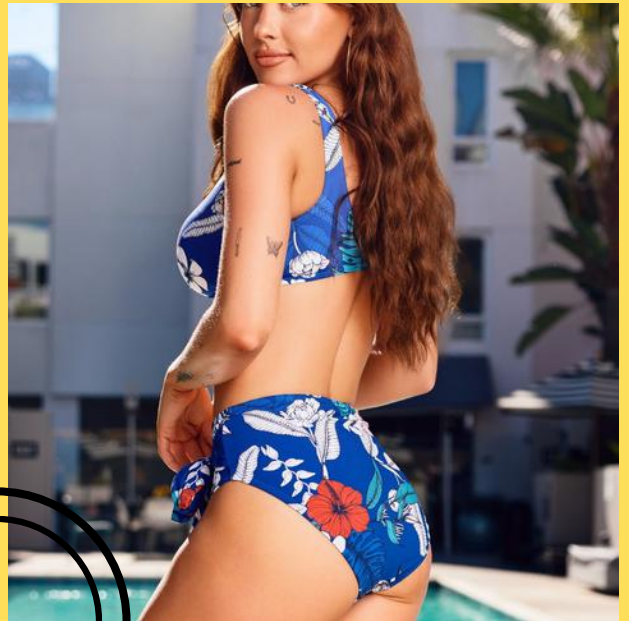
High-waisted floral bikini with tied bottoms

## Product Info:

Make: 82% Nylon, 18% Spandex

Pack: 2S - 2M - 2L

Colors: Blue



**H3051**



# Hard Cup Floral

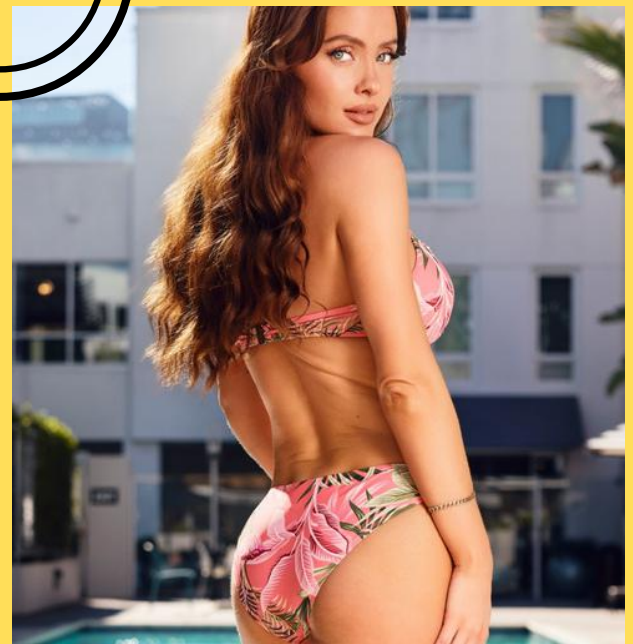
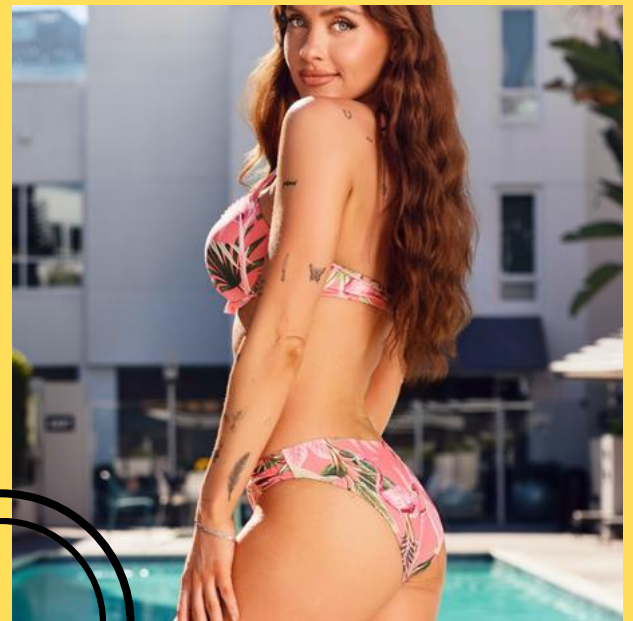
Halter top bikini with  
hard cups and floral  
design

## Product Info:

Make: 82% Nylon, 18% Spandex

Pack: 2S - 2M - 2L

Colors: Fuchsia, Coral



**H3039**

# Ruffle Straps

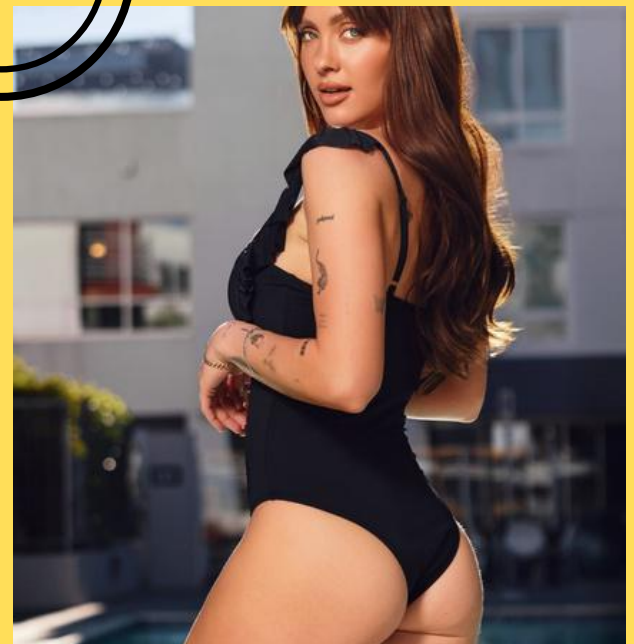
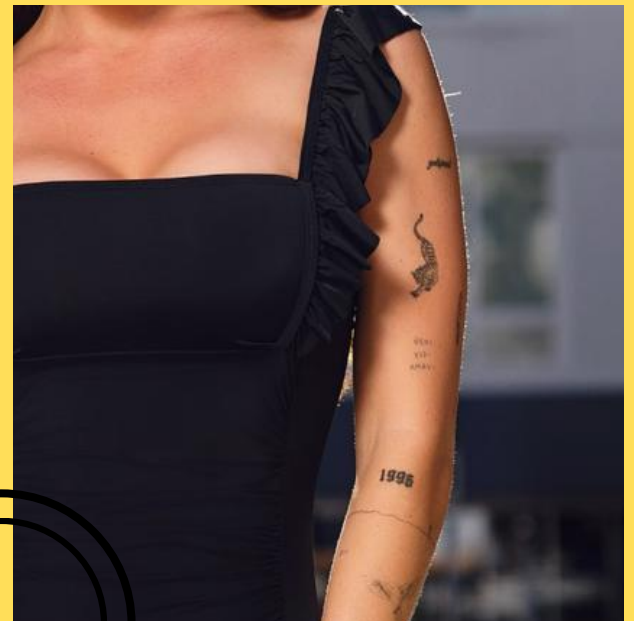
Ruffle strap one piece with solid color

## Product Info:

Make: 82% Nylon, 18% Spandex

Pack: 2S - 2M - 2L

Colors: Black, Green



**Y933**

# Shinning Hard Cup

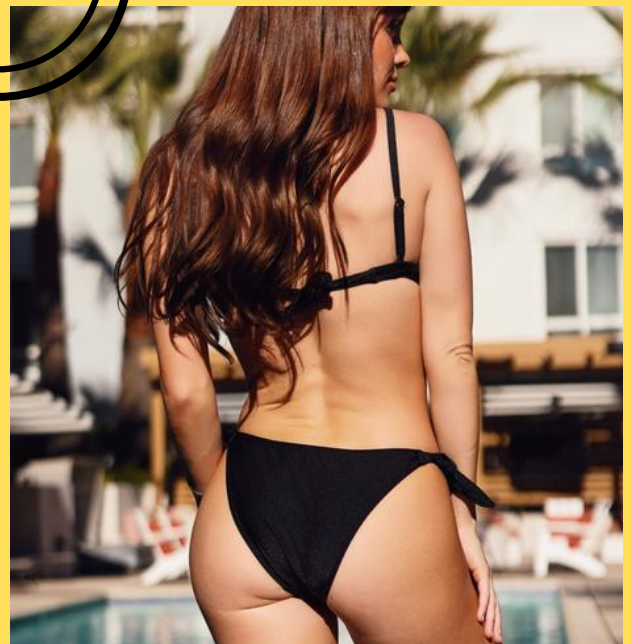
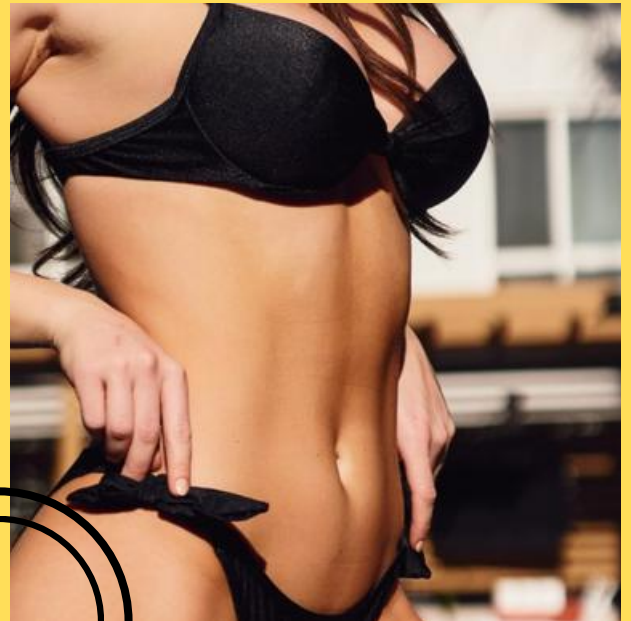
Shiny hard cup bikini  
with tied bottoms and  
spaghetti straps

## Product Info:

Make: 82% Nylon, 18% Spandex

Pack: 2S - 2M - 2L

Colors: Black, Blue, Fuchsia



**Y925**





# Zipper High Cut

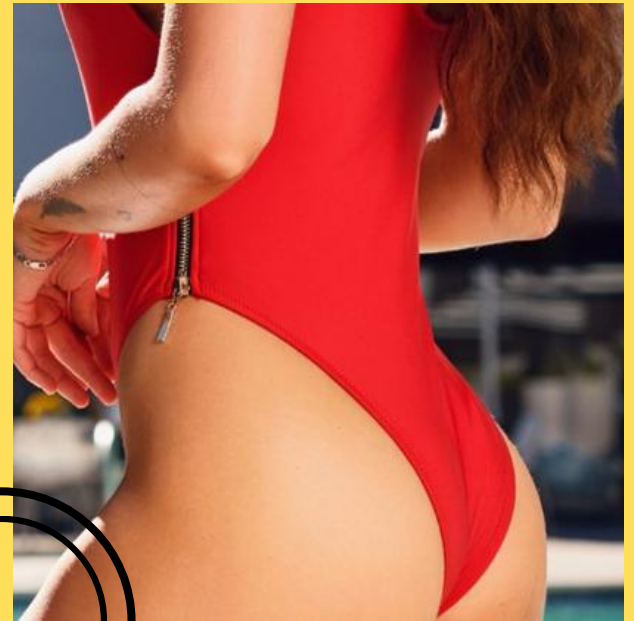
Solid one piece with zipper side closure and high cut design

## Product Info:

Make: 82% Nylon, 18% Spandex

Pack: 2S - 2M - 2L

Colors: Red, Black



**Y935**

# Cut Out Floral

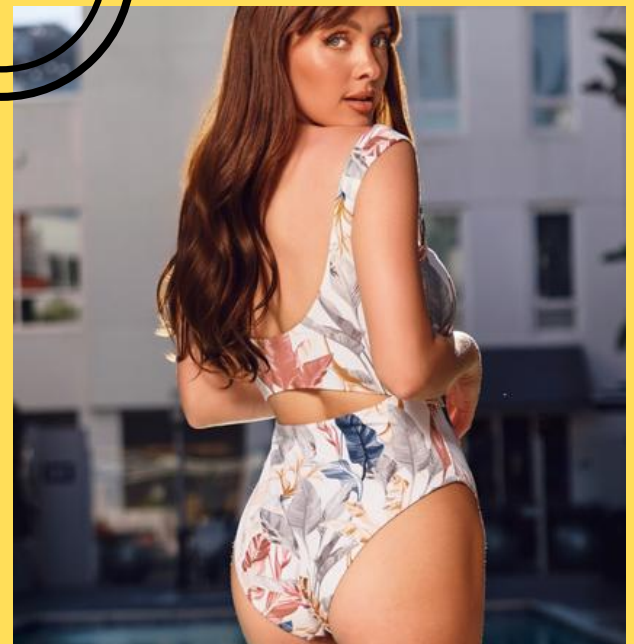
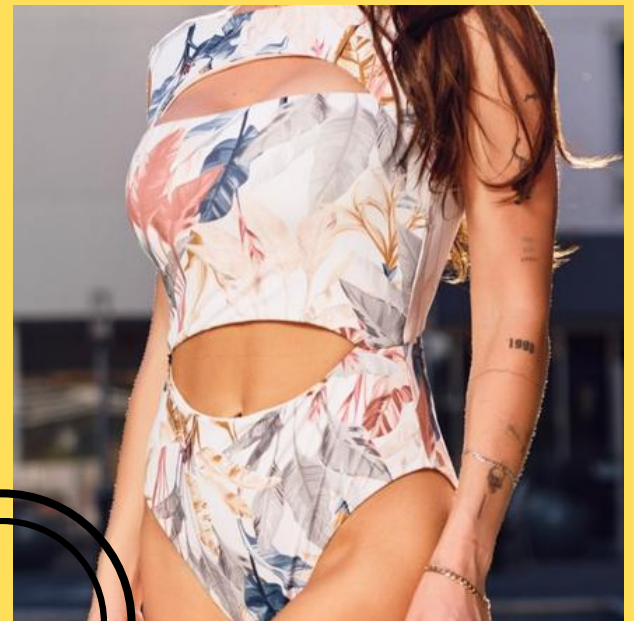
Floral one piece with  
cut out design and high  
cut bottoms

## Product Info:

Make: 82% Nylon, 18% Spandex

Pack: 2S - 2M - 2L

Colors: White, Blue



**H3044**

# Crisscross Classic

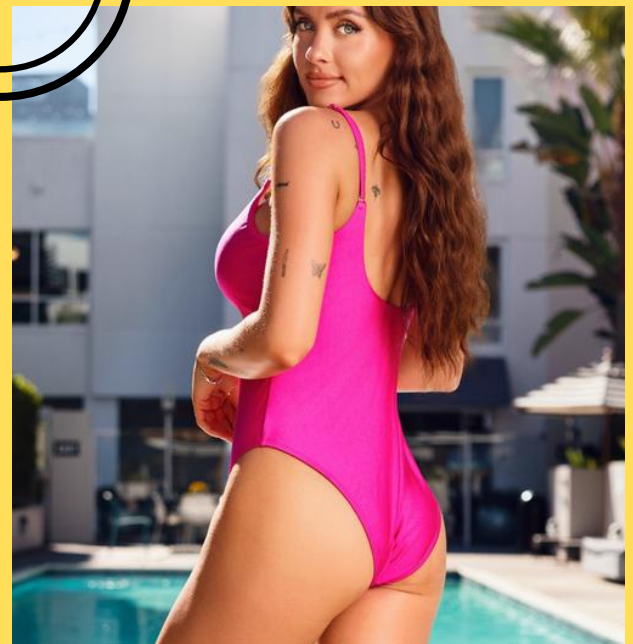
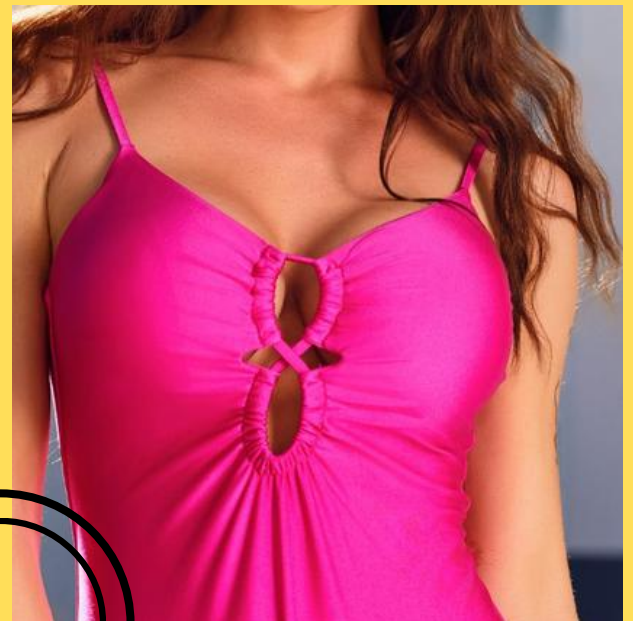
Classic solid one piece  
with crisscross front  
design

## Product Info:

Make: 82% Nylon, 18% Spandex

Pack: 2S - 2M - 2L

Colors: Fuchsia, Purple, Teal



**H3037**

# Textured Cross Back

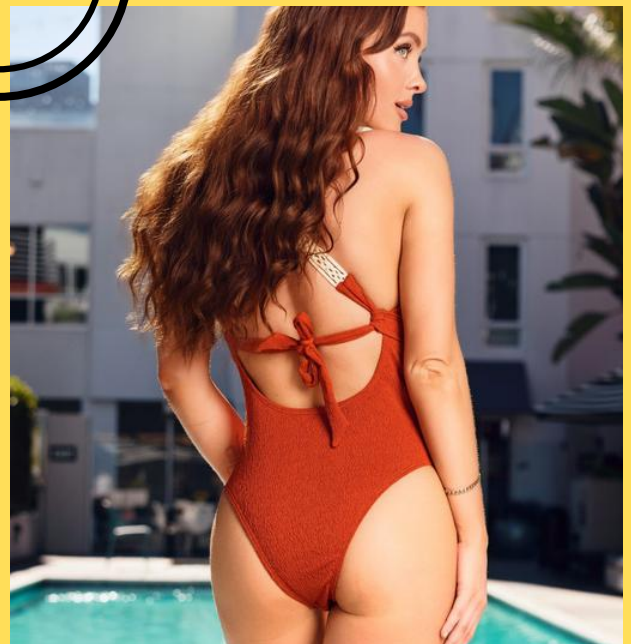
Textured one piece with  
tied and cross back  
design

## Product Info:

Make: 82% Nylon, 18% Spandex

Pack: 2S - 2M - 2L

Colors: Burgundy, White



**H3054**



# Long Crochet

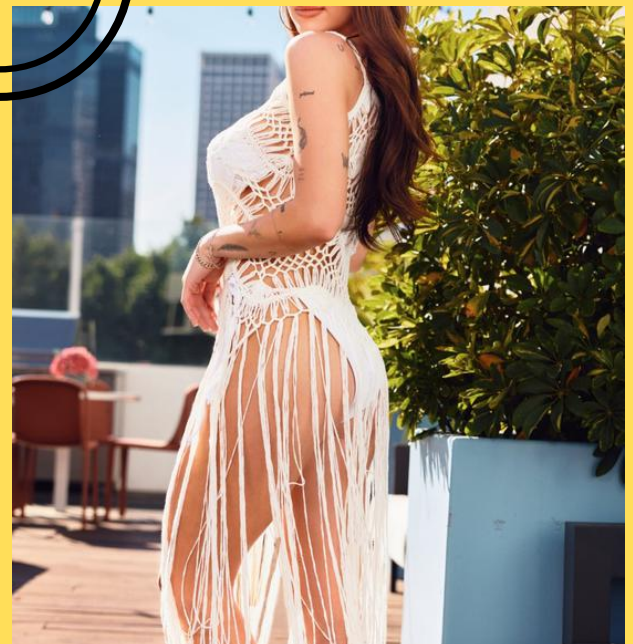
Long crochet coverup  
with tassel bottom

## Product Info:

Make: 100% Polyester

Pack: 2S - 2M - 2L

Colors: White, Black



0152

# Tassel Crochet

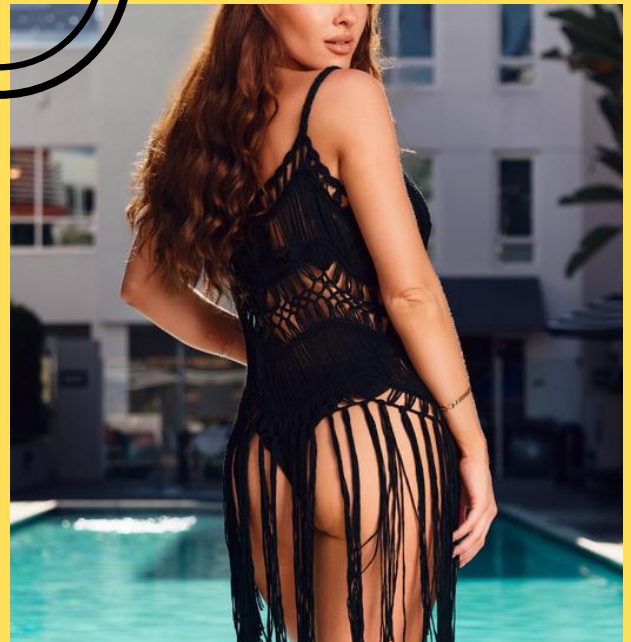
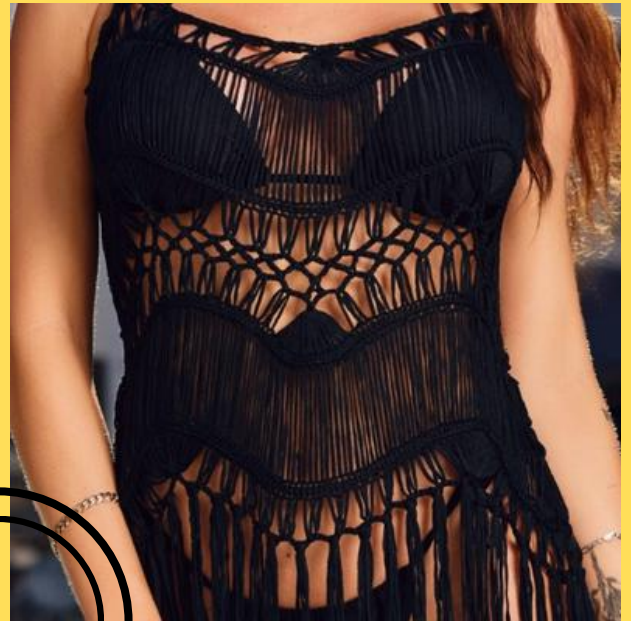
Mid crochet coverup  
with tassel bottom

## Product Info:

Make: 100% Polyester

Pack: 2S - 2M - 2L

Colors: Black, White



0153

# Square Shorts

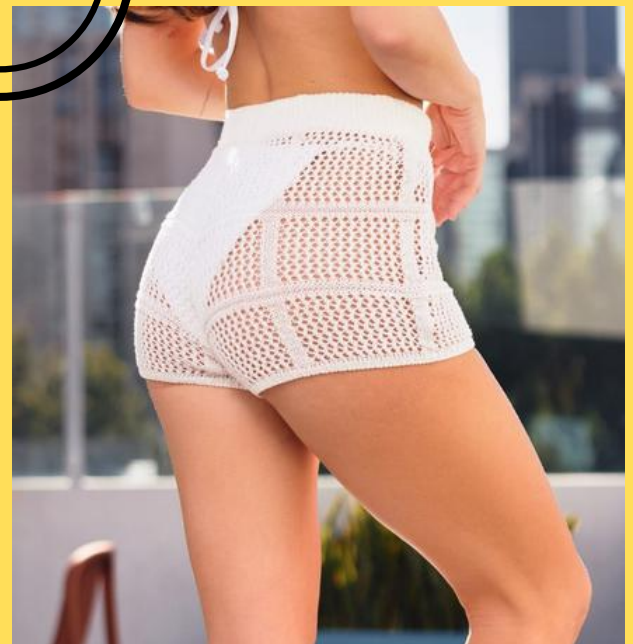
Crochet beach cover up  
shorts with drawstring

## Product Info:

Make: 100% Polyester

Pack: 2S - 2M - 2L

Colors: Black, White



4225

# Wide Leg Knit

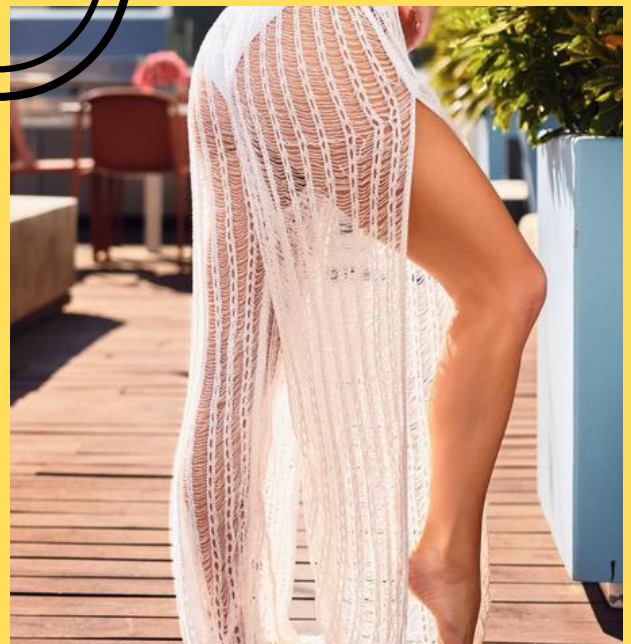
Split hollow out cover  
up beach pants

## Product Info:

Make: 100% Polyester

Pack: 2S - 2M - 2L

Colors: White



**G514**



# Tassel Trim Split

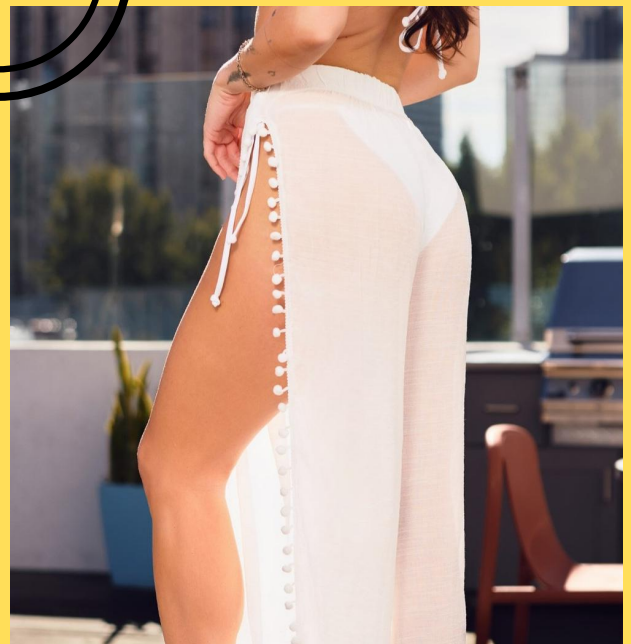
Split cover up beach pants with tassel trim

## Product Info:

Make: 100% Polyester

Pack: 2S - 2M - 2L

Colors: White



**CY9001**



# See Through Legs

See-through wide leg  
cover up pants

## Product Info:

Make: 100% Polyester

Pack: 2S - 2M - 2L

Colors: Black, White



**G392**

# Crochet Midi Dress

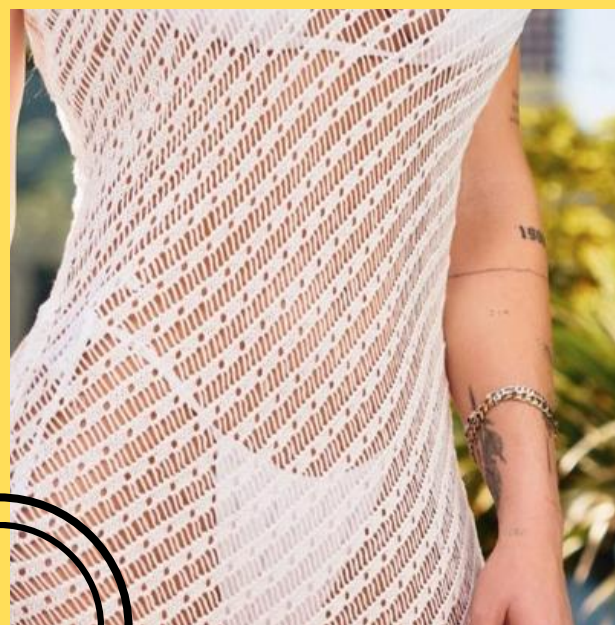
One shoulder crochet  
midi dress cover up

## Product Info:

Make: 100% Polyester

Pack: 2S - 2M - 2L

Colors: White, Black



**G523**

# Knitted Sleeveless

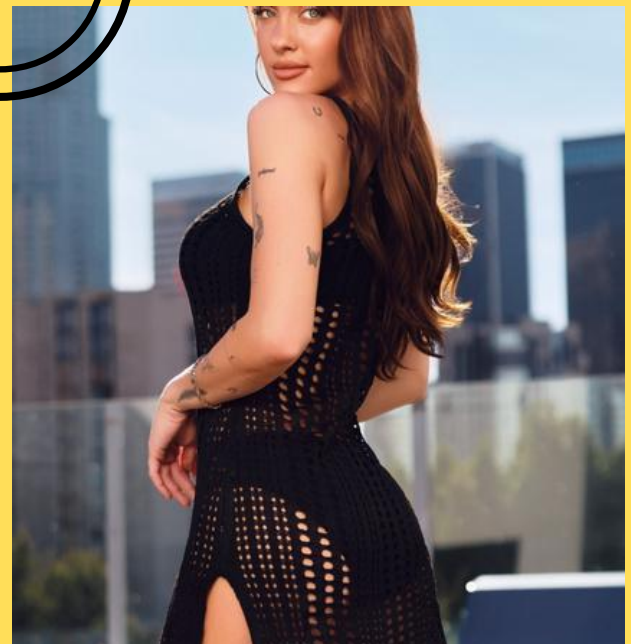
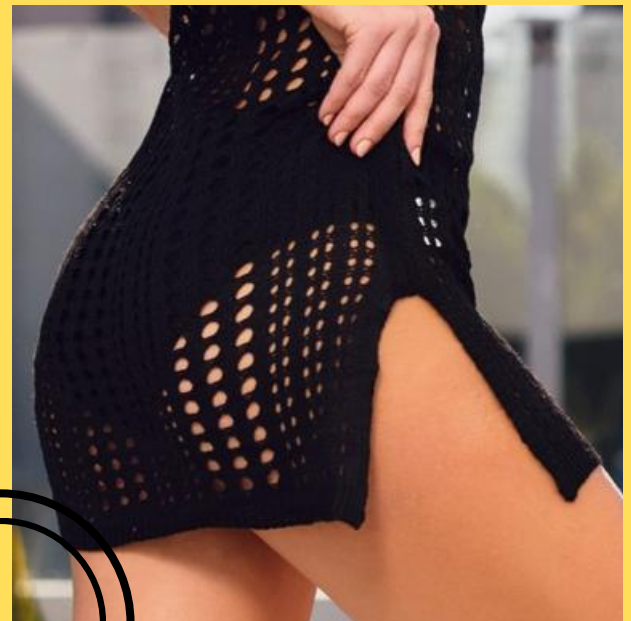
Knitted sleeveless cover up dress

## Product Info:

Make: 100% Polyester

Pack: 2S - 2M - 2L

Colors: Black, White



**CX8007**

# Knitted Dress

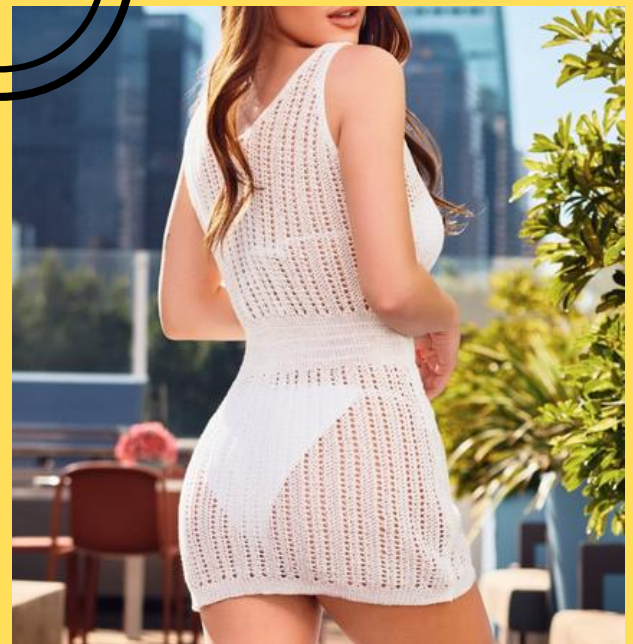
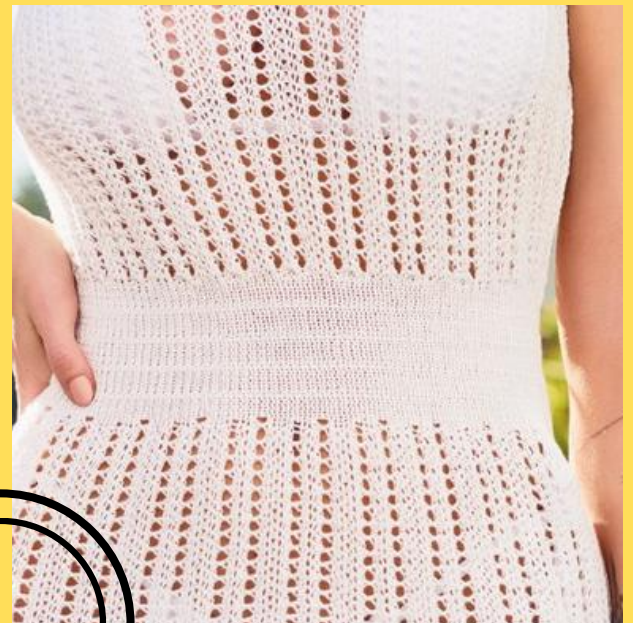
Knitted sleeveless cover up dress

## Product Info:

Make: 100% Polyester

Pack: 2S - 2M - 2L

Colors: White, Black



4262

# Wide Leg Pants

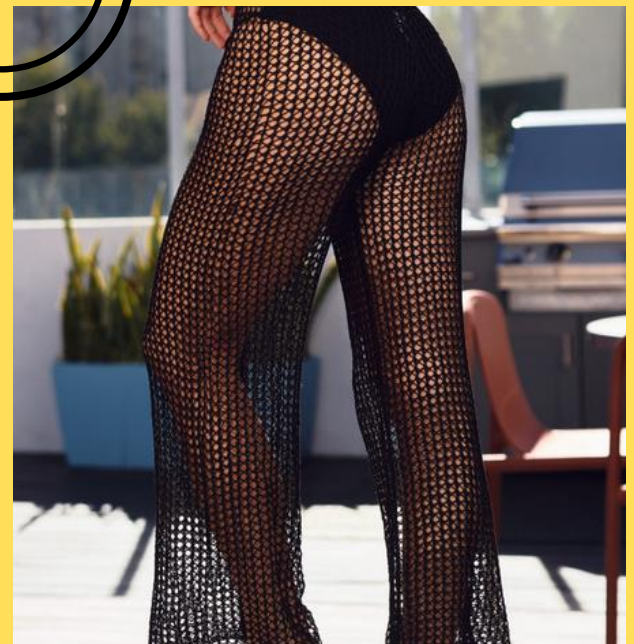
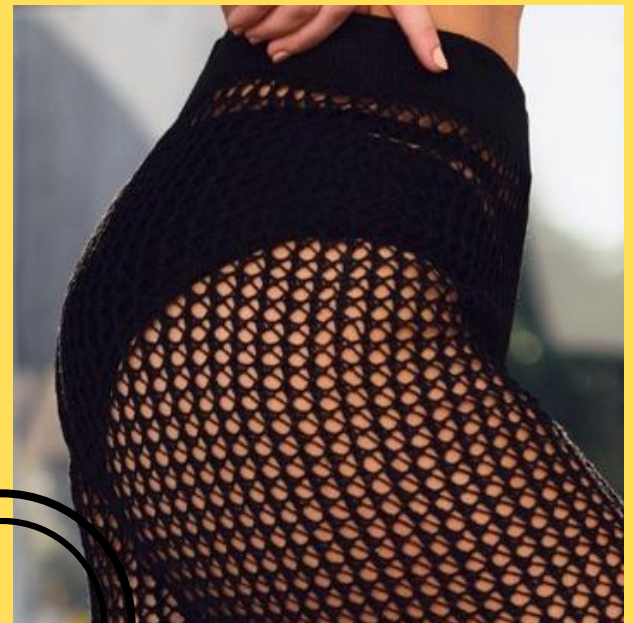
Crochet wide leg cover  
up beach pants

## Product Info:

Make: 100% Polyester

Pack: 2S - 2M - 2L

Colors: Black, White



QQ7001



# Drawstring Pants

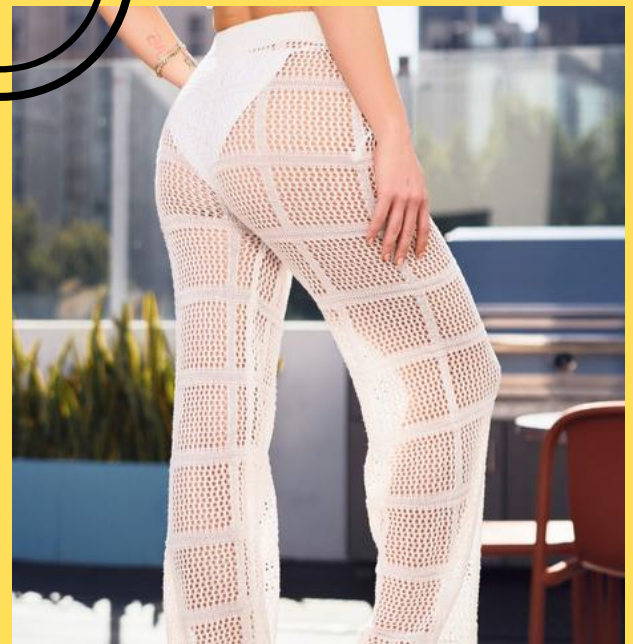
Drawstring hollow out  
crochet cover up pants

## Product Info:

Make: 100% Polyester

Pack: 2S - 2M - 2L

Colors: White, Black



4228

# Crochet Hollow out

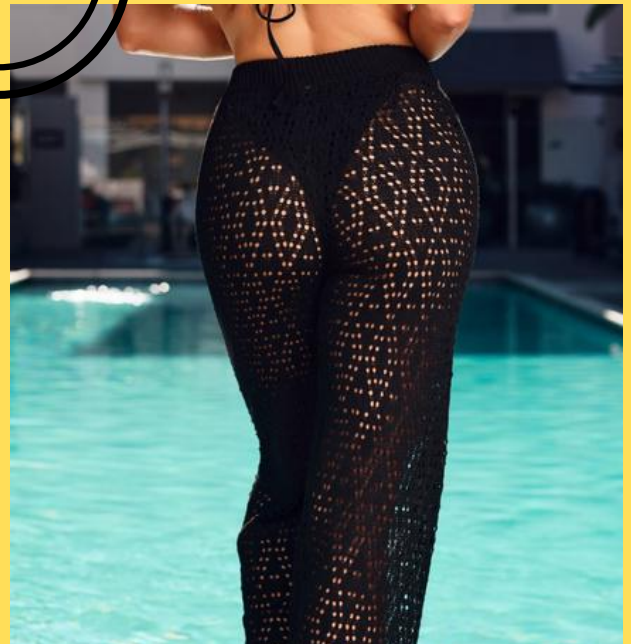
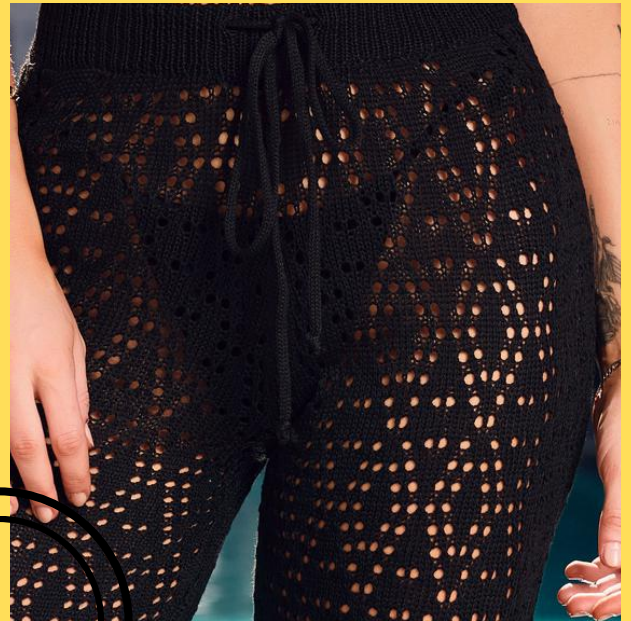
Crochet hollow out  
cover up pants with  
diamond pattern

## Product Info:

Make: 100% Polyester

Pack: 2S - 2M - 2L

Colors: Black, White



4226



# Diamond Hollow Out

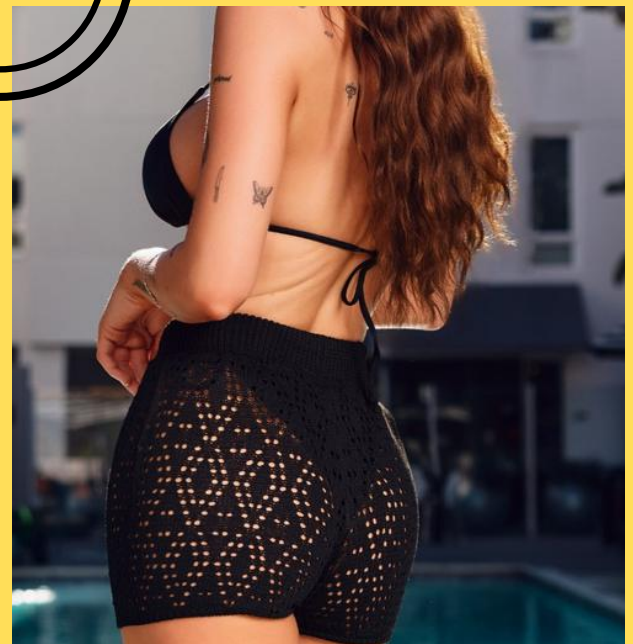
Crochet hollow out  
cover up shorts with  
diamond pattern

## Product Info:

Make: 100% Polyester

Pack: 2S - 2M - 2L

Colors: Black, White



4219

# Hollow Out Pullover

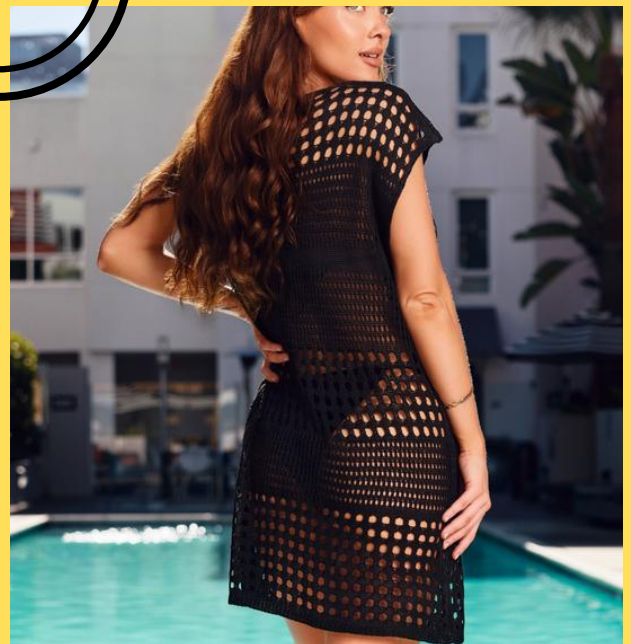
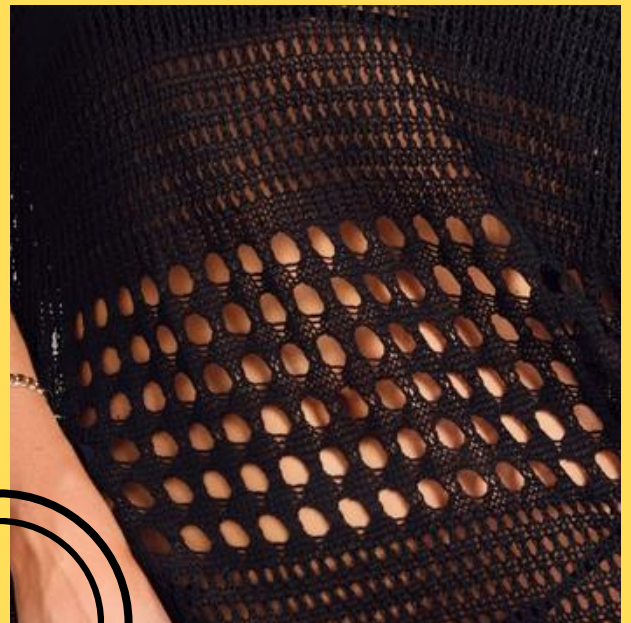
Crochet hollow out beach pullover

## Product Info:

Make: 100% Polyester

Pack: 2S - 2M - 2L

Colors: Black, White, Beige, Blue



**CX8009**

# Asymmetric Long Skirt

Crochet asymmetric long skirt cover up

## Product Info:

Make: 100% Polyester

Pack: 2S - 2M - 2L

Colors: White, Black



QQ7002



# Beige Pullover

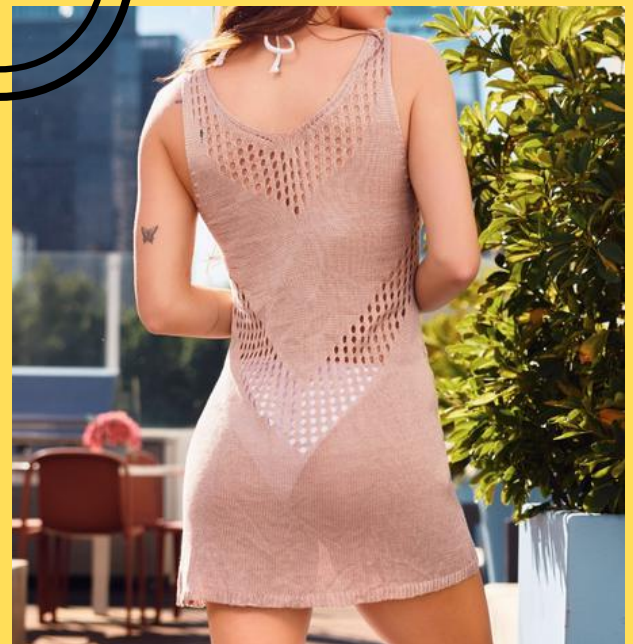
Beige knit pullover with hollow out design

## Product Info:

Make: 100% Polyester

Pack: 2S - 2M - 2L

Colors: Beige



**CX8003**