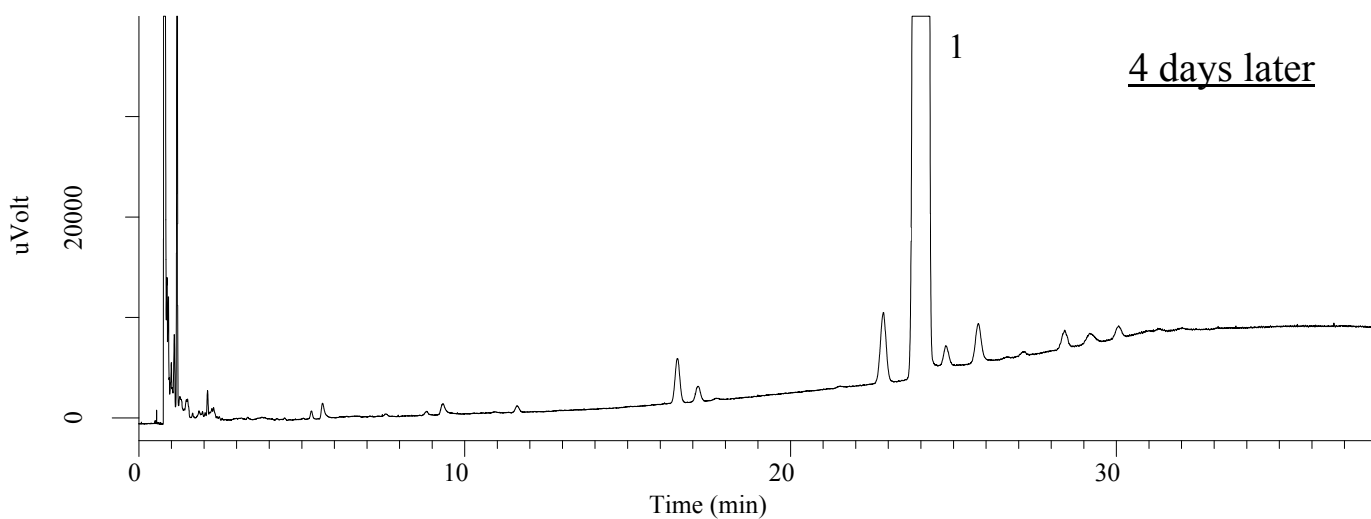
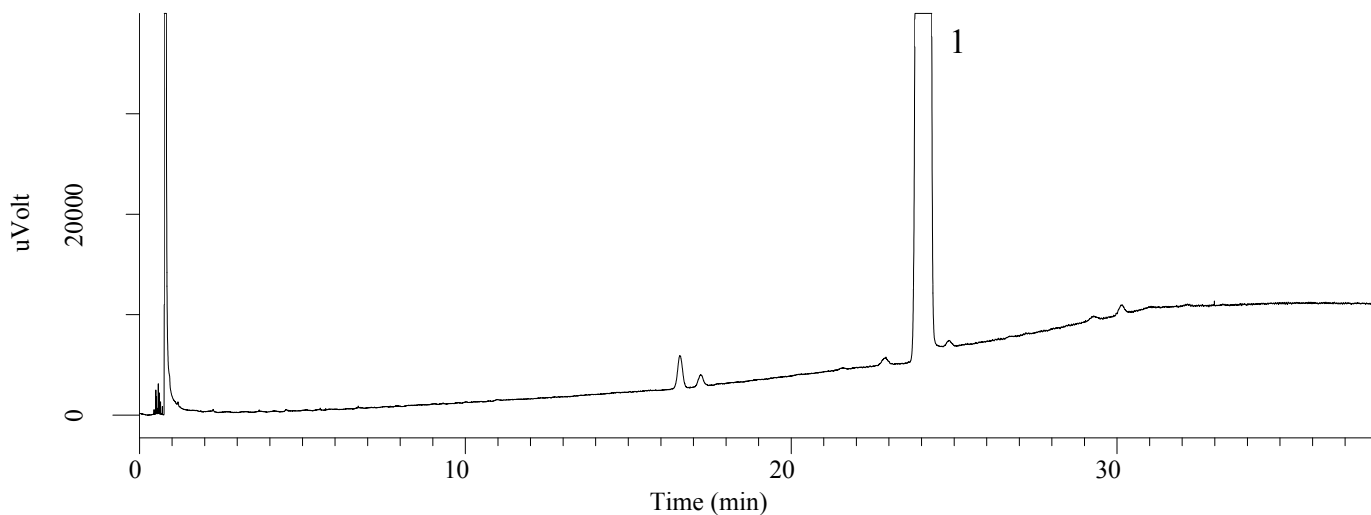


InertSearch™ for GC

InertCap® Applications

Analysis of Sertraline Hydrochloride (Under the Condition of European Pharmacopoeia 7.0)

Data No. GA245-0644



Conditions

System : GC-FID
Column : InertCap 17
0.53 mm I.D. x 30 m df = 1.00 µm
Col. Cat. No. : 1010-65445
Col. Temp. : 200 °C (1 min hold) - 2 °C/min
- 260 °C (7 min hold)
Carrier Gas : He 75 kPa
Injection : Split flow 90 mL/min
250 °C
Detection : FID Range 10⁰
280 °C
Sample Size : 1 µL
Sample : Standard

Analyte :

1. Sertraline hydrochloride 25 mg/mL

Relative retention :

Sertraline (retention time = about 24 min)