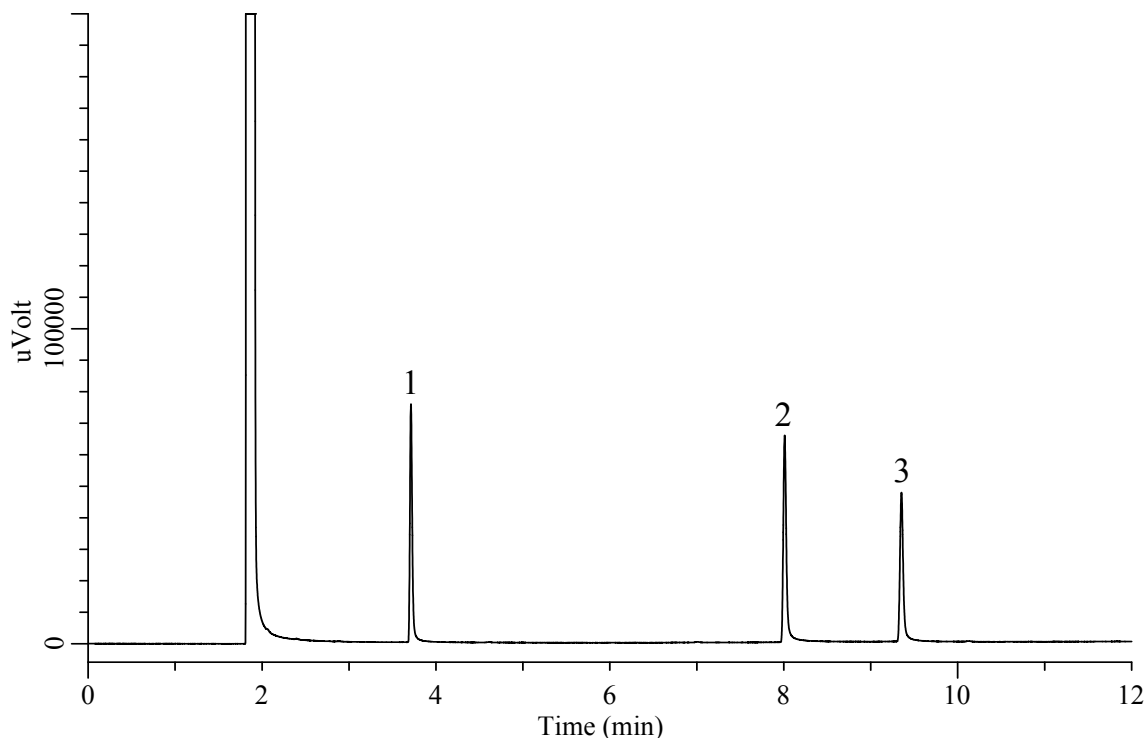


InertSearch™ for GC

InertCap® Applications

Glycerin, Concentrated glycerin (Under the Condition of Japanese Pharmacopoeia 16)

Data No. GA 263-0904



Conditions

System : GC-FID
Column : InertCap 1701
0.32 mm I.D. x 30 m df = 1.0 µm
Col. Cat. No. : 1010-61245
Col. Temp. : 100 °C — 7.5 °C/min — 220 °C
Carrier Gas : He 80 kPa
Injection : Split 1:20
220 °C
Detection : FID Range 10⁰
250 °C
Sample Size : 1 µL
Sample : Standard
500 mg/L in Methanol

Analyte

1. Ethylene glycol
2. Diethylene glycol
3. Glycerin

Resolution (1, 2) : 78.8 (≥ 40)
Resolution (2, 3) : 21.1 (≥ 10)