



WILLIAM & MARY
ALUMNI ASSOCIATION

JUNE 13-21, 2025

with optional
Athens Pre-Tour

THE GREEK ISLES

BY LUXURY SAILING YACHT LE PONANT

Orbridge



LE PONANT



WILLIAM & MARY
ALUMNI ASSOCIATION

Dear Alumni and Friends,

Set sail with us on an opulent nine-day voyage aboard *Le Ponant*, the first sailing yacht to join the Relais & Châteaux family. *Le Ponant's* intimate setting of only sixteen elegant staterooms and suites, and a dedicated chef, create a serenity as if you are on your own private yacht.

Aboard this three-masted sailing vessel, venture to famous archaeological sites, renowned historical treasures and exclusive beaches while island hopping around the natural coasts of the Cyclades and the Peloponnese. Explore the profound essence of the Mediterranean, visiting unique ports of call that differ from those typically frequented. This itinerary has been meticulously reimagined to provide you with unparalleled and exclusive experiences.

Following each day's enriching shore excursions, retreat to the comforts aboard *Le Ponant*. Panoramic windows, stylish furnishings, and attentive hospitality complement the vessel's haute cuisine and welcoming public spaces.

With significant savings of more than \$1,000 per couple, we anticipate this tour will fill quickly. Please reserve today online at wm.orbridge.com, by calling (866) 639-0079 or returning the attached reservation form.

Sincerely,

Virginia

Virginia Early Hall
Director, Alumni Travel
The William & Mary Alumni Association

Kelly Mierle

Kelly Mierle
Travel Planner
The William & Mary Alumni Association

Contact W&M Alumni Journeys at (757) 221-1165 or travel@wm.edu with questions or for more information.

The Greek Isles by Luxury Sailing Yacht | Itinerary and Highlights *(subject to change)*

Day 1: EN ROUTE FROM U.S.

Day 2: ARRIVE IN ATHENS, GREECE | LAVRIO – EMBARKATION Upon arriving an Orbridge representative will be waiting to assist with your transfer to the private yacht in Lavrio. Stepping on board *Le Ponant*, you'll notice a welcoming atmosphere of tranquility. Take time to unpack and familiarize yourself with your stateroom and the yacht's public spaces. This evening, gather for a special welcome reception followed by your first dinner on board.
Overnight: *Le Ponant* (R,D)

Day 3: POLYAIGOS *Le Ponant* glides south towards Polyaiagos, the uninhabited gem of the Cyclades, for a full day of water activities and blissful leisure time. Swim, snorkel and paddleboard in crystal-clear waters around the yacht. Or join a group to fish just off the bow. Set off on a Zodiac tour to discover the pristine paradise of Polyaiagos. Swim and snorkel around the secluded beaches, reveling in the exclusive experiences in this private maritime sanctuary.
Overnight: *Le Ponant* (B,L,D)

Day 4: TINOS Our first port of call, Tinos, beckons with spiritual allure. Famed for the miraculous shrine of the Holy Church of Panagia, this island is a haven for those seeking an intimate refuge amidst unspoiled landscapes. Disembark and choose one of two included excursions. Set off on a guided hike along a rocky trail, passing by the ruins of a Venetian fortress and stopping at the quaint village of Volax to admire the traditional art of basket weaving before arriving at Agapi—one of the island's oldest villages—for a delicious lunch. Alternatively, join a village tour by motor coach, first visiting Volax and the basket weavers followed by a museum tour at Pyrgos to gain insight into the island's tradition of marble art.
Overnight: *Le Ponant* (B,L,D)

Day 5: SERIFOS The enchanting island of Serifos unfolds like a dream. Visit the Monastery of Taxiarches, view the well-preserved remains of a white marble tower dating back to the 4th century BC and visit Mega Livadi, one of the main loading sites for the island's mining industry.
Overnight: *Le Ponant* (B,L,D)



Day 6: MONEMVASIA (PELOPONNESE) Next visit the medieval village of Monemvasia known as the “Gibraltar of the East.” During a guided walking tour discover notable highlights of the lower and upper town. Afterward gain insight into olive oil production during a tour tasting experience at an olive oil estate in Liotrivi.
Overnight: *Le Ponant* (B,L,D)

Day 7: KYTHNOS After breakfast on board, disembark in Kythnos, an arid and rocky island covered in thick evergreen underbrush. Bask in the tranquility of Loutra, known for its thermal springs, or explore the charming main town of Chora. Be tempted to nap beneath an umbrella on the beach, or swim, paddleboard or kayak before returning to the yacht early evening.
Overnight: *Le Ponant* (B,L,D)

Day 8: SPETSES Step onto a pedestrian-only island of aristocratic elegance and maritime history. Board a horse-drawn carriage for a relaxing journey to the historic mansion-turned-museum of Laskarina Bouboulina, a heroine of the Greek War of Independence. The museum offers a glimpse into her extraordinary life and achievements. Bicycles and e-bikes will also be available all day for independent exploration of Spetses.
Overnight: *Le Ponant* (B,L,R,D)

Day 9: LAVRIO – DISEMBARKATION | ATHENS | DEPART FOR U.S. After breakfast on the yacht, disembark to connect with the complimentary transfer to the airport for flights home. (B)

(B = Breakfast, L = Lunch, D = Dinner, R = Reception)



Monemvasia

What's Included

- 7 nights aboard private sailing yacht, *Le Ponant*
- All onboard hand-crafted meals: 7 breakfasts, 6 lunches and 7 dinners (served with wine, beer or non-alcoholic beverages) plus special welcome and farewell receptions
- Unlimited select complimentary beverages available 24/7 on board the yacht, including in the comfort of your stateroom
- All private tours and special small-group excursions as noted in the 9-day itinerary
- Full guiding services of an Orbridge Travel Director and expert local guides
- Private motor coach transportation
- Luggage portage
- Gratuities to ship crew, Orbridge Travel Director, local guides, drivers, porters and wait staff for included meals
- Airport transfers for guests arriving and departing during the suggested times



Tinos



Orbridge

Activity Level: Guests should be able to enjoy two hours or more of walking, be sure-footed on cobbled surfaces, and walk up and down stairs without assistance.



Spetses

Le Ponant

Ignite your passion for sailing, travel and exploring new horizons. This legendary three-masted yacht is the ideal size to venture into secluded coves, bays and inlets—with navigation under sail the moment conditions allow. Refined gastronomy, spacious common areas, the availability of indulgent spa treatments for purchase, attentive crew, and environmentally friendly equipment encapsulate the grandeur of this exclusive tour.



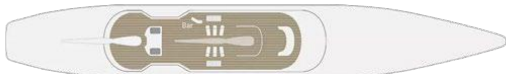
Aft Deck



Exterior Dining



Dining



SUN DECK



ZÉPHYR DECK



ALIZÉS DECK



MISTRAL DECK



Lounge



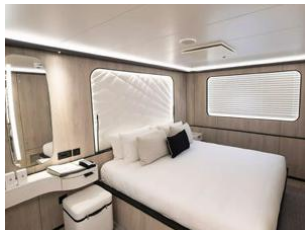
■ Mistral

One king or two single beds, one porthole window, dressing room, private bathroom with shower (approx. 150 sq.ft.).



■ Alizés Prestige

One king or two single beds, dressing room, private bathroom with shower, glazed panoramic swing door, private balcony with two armchairs (approx. 204 sq.ft.).



■ Mistral Prestige

One king or two single beds, one porthole window, dressing room, private bathroom with shower (approx. 172 sq.ft.).



■ Mistral Prestige Suite

One king or two single beds, two porthole windows, dressing room, lounge area with sofa bed and armchair, private bathroom with shower (approx. 290 sq.ft.).



■ Alizés

One king or two single beds, dressing room, private bathroom with shower, glazed panoramic swing door, private balcony (approx. 172 sq.ft.).



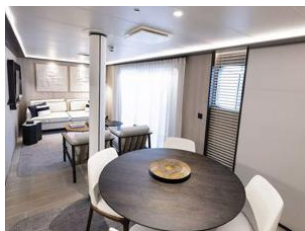
■ Alizés Privilege Suite

Champagne and fruit basket upon arrival, sweet or savory canapés and fruit basket daily, one king or two single beds, lounge area with sofa bed and two armchairs, private bathroom with two showers, panoramic window and glazed panoramic swing door, private balcony with four armchairs (approx. 322 sq.ft.).



■ Mistral Junior Suite

One king or two single beds, two porthole windows, dressing room, lounge area with sofa bed and armchair, private bathroom with shower (approx. 226 sq.ft.).



■ Owner's Suite

Champagne and fruit basket upon arrival, sweet or savory canapés and fruit basket daily, one-hour spa treatment (for two), premium drinks at the bar, room service for main meals, one king or two single beds, dining area for four, lounge area with sofa bed and armchair, private bathroom with two showers, panoramic glazed swing door and three porthole windows, private balcony with two armchairs (approx. 505 sq.ft.).



Optional Pre-Tour Athens

Enjoy additional time in the ancient city of Athens, where history and modernity entwine. The city's warm hospitality welcomes you to explore its charming streets filled with quaint cafés, traditional tavernas and lively markets.

Day +1: EN ROUTE FROM U.S.

Day +2: ARRIVE IN ATHENS, GREECE Upon arrival to Athens International Airport transfer to the hotel to enjoy the evening at leisure.
Overnight: Athens Capital Center Hotel

Day +3: ATHENS Following breakfast join your local guide for a tour of the Acropolis, a UNESCO World Heritage Site. The Acropolis has a history dating back to the Mycenaean period and has been continuously inhabited and developed over the centuries. This afternoon peruse artifacts and interactive exhibits at the Acropolis Museum, which is an archaeological excavation site itself. Ascending through the museum's three levels, each step unveils a new chapter in Greece's illustrious past, from the Archaic period to the Roman era. Layers of history unfold through the exhibits: Gallery of the Slopes of the Acropolis, Archaic Gallery and Parthenon Gallery. The remainder of the day is at leisure.
Overnight: Athens Capital Center Hotel (B)

Day +4: ATHENS This morning join your guide for a combination bus and walking tour featuring a blend of exploration and immersion into Athens' vibrant tapestry. Visit a variety of local shops and cafés to sample an array of traditional coffees, pastries and finger foods. Continuing the journey, meet a dance instructor for a special lesson in Greek dance and interpretation.
Overnight: Athens Capital Center Hotel (B)

Day +5: ATHENS | CAPE SOUNION | MAIN PROGRAM BEGINS Today sojourn to Cape Sounion situated at the southernmost tip of the Attica Peninsula for a guided tour of the Temple of Poseidon. After lunch at a local taverna, transfer to Lavrio to join guests arriving for the main program and embarkation. (B,L)

What's Included

- 3 nights at Athens Capital Center Hotel (or similar)
- 3 breakfasts and 1 lunch
- Guided panoramic city tour
- Guided tours of the Acropolis and Temple of Poseidon
- Admission to the Acropolis Museum
- Guided culinary and cultural city tour
- Transportation for included tours
- Luggage portorage
- Gratuities to Orbridge Travel Director, local guide, driver, porters, hotel staff and wait staff for included meals
- Airport transfers for guests arriving during the suggested times



THE GREEK ISLES BY LUXURY
SAILING YACHT LE PONANT

JUNE 13-21, 2025

Athens Pre-Tour: June 10-14, 2025

Reserve by Credit Card:

Online: wm.orbridge.com

Phone: (866) 639-0079

Fax: (206) 452-5655

Reserve by Check:

Made payable to Orbridge, LLC

Mail to: Orbridge, P.O. Box 1376

Poulsbo, WA 98370

Stateroom Category	Standard Rate	Special Rate*
Mistral	\$12,889	\$12,385
Mistral Prestige	\$14,389	\$13,885
Alizés	\$15,389	\$14,885
Mistral Junior Suite	\$15,789	\$15,285
Alizés Prestige	\$16,589	\$16,085
Mistral Prestige Suite	\$18,389	\$17,885
Alizés Privilege Suite	\$23,389	\$22,885
Owner's Suite	\$26,889	\$26,385

Category rates include the
required \$390 per person port fee.

Athens Pre-Tour		
Category	Standard Rate	Special Rate*
Double	\$1,899	\$1,695
Single	\$2,599	\$2,395

Rates are per person based on double occupancy
except where noted as Single, in U.S. dollars.

GUEST INFORMATION:

Guest #1 Name (Title/Salutation): _____

Email: _____ Class Year: _____

Home Phone: _____ Alt. Phone: _____

Address: _____

City: _____ State: _____ Zip: _____

Guest #2 Name (Title/Salutation): _____

Email: _____ Class Year: _____

Home Phone: _____ Alt. Phone: _____

DEPOSIT PAYMENT:

☐ Check ☐ ACH (Automated Clearing House) ☐ MasterCard/Visa ☐ American Express ☐ Discover

Card #: _____ Exp. Date: _____ CW: _____

Name (as printed on card): _____

Billing Address (if different from above): _____

City: _____ State: _____ Zip: _____

CATEGORY SELECTION & DEPOSIT:


Category Preference: 1st choice _____ 2nd choice _____

_____ guests joining pre-tour (\$500/person) +

_____ guests joining program (\$850/person) = **TOTAL DEPOSIT: \$** _____

I/we have read, understand, and agree to the full Terms & Conditions at terms.orbridge.com; and I/we agree that Orbridge, LLC is authorized to charge my credit card above and/or take my/our deposit for this program.

Signature: _____ Date: _____

 Orbridge takes seriously the responsibility to minimize our global environmental impact. Each year we plant 100,000 trees in U.S. State Forests with afforestation needs as an ongoing initiative among our evolving sustainability efforts. Learn more at orbridge.com/going-green.

*Special group rate; limited offer. Airfare not included. Single availability limited. **A complement to the educational component of this journey, Expedition Libraries are curated collections of useful resources and background reading tailored to this program. Place your deposit on or before the specified date, and one Expedition Library per household will be sent after receipt of final payment. Libraries may be purchased; please call for details.

CUT HERE



W&M Alumni Association
Attn: Alumni Journeys
P.O. Box 2100
Williamsburg, VA 23187

THE GREEK ISLES BY LUXURY SAILING YACHT LE PONANT

JUNE 13-21, 2025

Special Alumni Rate:

Save more than \$1,000 per couple

30-DAY REFUND GUARANTEE

FREE EXPEDITION LIBRARY
AN EXCLUSIVE EARLY
RESERVATION BONUS

Reserve by
December 20, 2024**

PRSRT STD
U.S. POSTAGE
PAID
PERMIT NO. 825
SAN DIEGO, CA