

YOUR ADVANCED RELOCATION GUIDE

RELOCATING TO EMERALD COAST

REAL ESTATE
INSIGHTS

NEW VIDEOS
EVERY WEEK

SUBSCRIBE



EMERALD
coast
RELOCATION
EXPERTS



TABLE OF CONTENTS

- 4 WELCOME TO OREGON**
A warm introduction to living in Pensacola and the Emerald Coast.
- 5 WHY MOVE TO PENSACOLA**
Discover why buyers are choosing Pensacola for coastal living.
- 6 REAL ESTATE OVERVIEW**
A quick look at home styles, market options, and buyer opportunities.
- 7 WHY BUY IN PENSACOLA**
A quick look at home styles, market options, and buyer opportunities.
- 8 COST OF LIVING & TAXES**
Understand housing costs, taxes, insurance, and local expenses.
- 9 NEIGHBORHOODS TO WATCH**
Explore communities across Pensacola and the Emerald Coast.
- 10 TRANSPORTATION & COMMUTE**
Learn about major roads, airport access, and daily travel routes.
- 11 WEATHER OVERVIEW**
Get familiar with the warm Gulf Coast climate and seasons.
- 14 LIFESTYLE & CULTURE**
Understand housing costs, taxes, insurance, and local expenses.
- 15 SHOPPING**
Find top shopping areas, boutiques, outlets, and everyday retail.
- 16 DINING**
Discover seafood, waterfront dining, and local restaurant favorites.
- 17 THINGS TO DO**
Explore beaches, boating, parks, festivals, and local attractions.
- 19 SCHOOLS & UNIVERSITIES**
Review school districts, colleges, and education options nearby.
- 20 HEALTHCARE**
Learn about hospitals, medical centers, and healthcare access.
- 21 MAJOR EMPLOYERS**
See key industries and employers supporting the local economy.
- 22 FINDING THE RIGHT NEIGHBORHOOD**
Learn how to match your lifestyle, budget, and commute needs.
- 24 CITY/AREA GUIDES**
Compare Pensacola, Gulf Breeze, Navarre, Destin, 30A, and more.
- 26 FAQs**
Get answers to common relocation and homebuying questions.
- 27 CONNECT WITH US**
Start your move with Pete Sweeney and Emerald Coast Relo Team.







WELCOME TO YOUR GUIDE TO

LIVING IN PENSACOLA AND THE EMERALD COAST



Moving to the Emerald Coast is about more than choosing a home near the beach. It is about understanding the lifestyle, commute, neighborhood feel, flood zones, schools, local amenities, and the difference between each coastal and inland community.

Pete Sweeney and the Emerald Coast Relo Team help buyers make clear, confident decisions when relocating to Pensacola, Gulf Breeze, Navarre, Milton, Pace, Fort Walton Beach, Destin, 30A, and surrounding areas.

Whether you are moving for work, military relocation, retirement, lifestyle, or a fresh start, this guide gives you a practical overview of what it is like to live along this part of Northwest Florida.



WHY MOVE TO PENSACOLA

COASTAL LIVING WITH REAL LOCAL CHARACTER



Pensacola offers a strong blend of beach access, historic charm, military presence, local dining, and a more relaxed Gulf Coast pace. It has the feel of a coastal city without the size and congestion of Florida's larger metro areas.

The area is known for its white sand beaches, downtown culture, boating, fishing, community events, and strong connection to the military. Buyers can choose from historic homes, beach-area condos, suburban neighborhoods, new construction, and waterfront properties.



Access to Pensacola Beach and the Gulf of Mexico



Historic downtown with restaurants, shops, and entertainment



Strong military and defense presence



Range of coastal, suburban, and inland communities



Popular relocation destination for families, retirees, remote workers, and military buyers



Convenient access to nearby beach towns across the Emerald Coast



A MARKET WITH COASTAL VARIETY

The Pensacola and Emerald Coast real estate market offers a wide range of home styles and price points depending on location, proximity to the water, property condition, and lifestyle needs.

Closer to the beach, buyers will often find condos, townhomes, vacation properties, and higher-demand coastal homes. Inland areas like Pace, Milton, and parts of Pensacola may offer more space, newer construction, and a quieter residential feel.

- Single-family homes in established neighborhoods
- Beach condos and townhomes
- New construction communities
- Historic homes near downtown Pensacola
- Military-friendly housing near major bases
- Investment and second-home properties
- Luxury homes in Destin, Gulf Breeze, and 30A



WHY BUY IN PENSACOLA

ELEVATE YOUR LIFESTYLE ON THE GULF COAST

Buying in Pensacola gives homeowners access to a coastal lifestyle with strong long-term appeal. The area continues to attract buyers who want warm weather, beach access, military connectivity, outdoor recreation, and a more approachable pace of life.

For many buyers, Pensacola is attractive because it offers variety. You can live close to downtown, near the beach, near a military base, in a quiet suburb, or in a growing inland community with more space.

- Single-family homes in established neighborhoods
- Waterfront and water-view homes
- Beach condos and townhomes
- New construction communities
- Historic homes near downtown Pensacola
- Military-friendly housing near major bases
- Investment and second-home properties
- Luxury homes in Destin, Gulf Breeze, and 30A





COST OF LIVING & TAXES

PLANNING YOUR MOVE WITH CONFIDENCE



The cost of living along the Emerald Coast depends heavily on where you choose to live. Beachfront areas, waterfront properties, and luxury communities typically come with higher housing costs, while inland areas may offer more space and a lower overall monthly cost.

Florida is also known for having no state personal income tax, which can be a major consideration for relocating buyers. However, buyers should also factor in property taxes, insurance, HOA fees, flood zones, and maintenance costs, especially near the coast.

LOCAL TIP

Before choosing a property, review the full monthly cost, not just the purchase price. Insurance, HOA dues, flood zone status, and maintenance needs can make a major difference in your long-term budget.

TYPICAL COST CONSIDERATIONS

- **Housing:** Varies widely by city, proximity to the beach, and property type
- **Utilities:** Can increase during warm summer months
- **Transportation:** Most residents rely on personal vehicles
- **Insurance:** Coastal homes may require additional review for wind, flood, and property coverage
- **HOA Fees:** Common in condos, gated communities, and planned neighborhoods
- **Property Taxes:** Based on assessed value and local taxing districts
- **Sales Tax:** Florida has a state sales tax with potential local surtaxes



AREAS BUYERS OFTEN COMPARE

NEIGHBORHOODS TO WATCH

The right area depends on how you want to live. Some buyers want walkability and downtown energy.

Pensacola: Historic downtown charm, central access, and established neighborhoods with a local feel.

Gulf Breeze: Coastal living near Pensacola Beach with quiet neighborhoods and strong residential appeal.

Navarre: Laid-back beach-town living with family-friendly neighborhoods and easy beach access.

Milton: Small-town living with more space, nature access, and a quieter pace near Pensacola.

Pace: Growing suburban area with newer homes, daily convenience, and room for families.

Fort Walton Beach: Practical coastal living near beaches, military bases, and everyday conveniences.

Destin: Luxury beach living with boating, vacation homes, emerald water, and resort-style energy.

30A: Polished beach towns with boutique shopping, luxury homes, and scenic coastal charm.

 **WATCH NOW**



Living in
PENSACOLA
FLORIDA
YOUR GUIDE TO LIFE ON FLORIDA'S EMERALD COAST

 **850.733.6337**
Call or Text

 **info@emeraldcoastrelo.com**
Email Anytime

FOR IN-DEPTH VIDEOS,
NEIGHBORHOOD TOURS & MORE
VISIT OUR SHORTS CHANNEL!

 **EMERALD COAST LIFE**
@EmeraldCoastLife-b9f



GETTING AROUND PENSACOLA AND THE EMERALD COAST

TRANSPORTATION & COMMUTE



Most residents in Pensacola and the Emerald Coast rely on personal vehicles. The region is spread out, and commute times can vary depending on bridges, beach traffic, military base access, and seasonal tourism.

Pensacola offers convenient access to major roads, local airports, and nearby beach communities. Buyers moving from larger metros often appreciate the simpler daily flow, but beach-area traffic can increase during peak travel seasons.

KEY ROADS AND ROUTES

- Interstate 10 for regional east-west travel
- Interstate 110 connecting Pensacola to downtown
- U.S. Highway 98 for coastal movement across Gulf Breeze, Navarre, Fort Walton Beach, and Destin
- Highway 90 for access through Pace and Milton
- Scenic Highway and local beach roads for waterfront and coastal routes





WEATHER OVERVIEW

WARM, COASTAL, AND BUILT FOR OUTDOOR LIVING

Pensacola and the Emerald Coast have a humid subtropical climate with warm summers, mild winters, and plenty of sunshine throughout the year. The weather supports an outdoor lifestyle centered around beaches, boating, fishing, golf, walking, and waterfront dining.

Summers are hot and humid, with afternoon storms common during the warmer months. Winters are generally mild, making the area appealing for retirees, seasonal residents, and buyers relocating from colder climates.



SEASONAL OVERVIEW

- Spring: Pleasant temperatures, blooming landscapes, and active outdoor events
- Summer: Hot, humid, sunny, and popular for beach days
- Fall: Warm, comfortable, and often a favorite season for locals
- Winter: Mild compared to most of the country, with cooler evenings



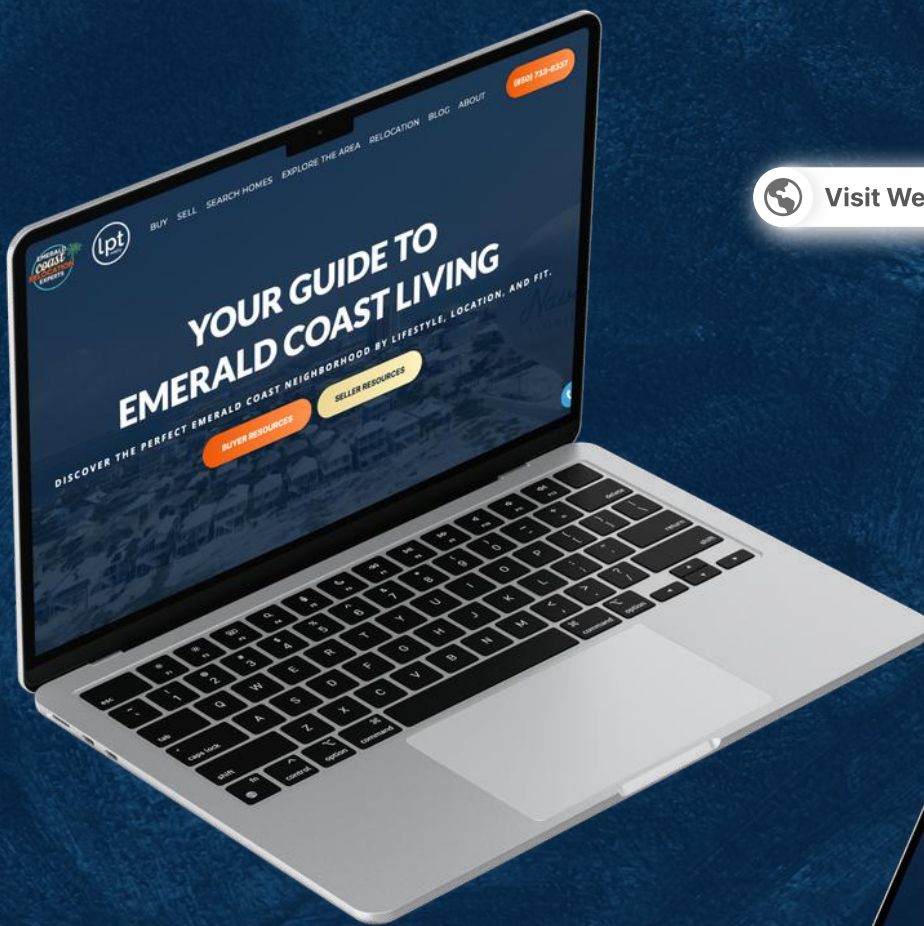
READY TO MAKE YOUR MOVE?

CONNECT WITH US



Relocating should feel exciting, not overwhelming. Whether you are comparing Pensacola, Gulf Breeze, Navarre, Milton, Pace, Fort Walton Beach, Destin, or 30A, Pete Sweeney and the Emerald Coast Relo Team can help you understand the areas clearly before making your move.

From neighborhood guidance and virtual tours to local insight and honest real estate advice, the goal is to help you choose the right home and the right community for your lifestyle.



 Visit Website

OUR **WEBSITE**



EMERALD COAST RELO TEAM

DON'T **FORGET** TO  **SUBSCRIBE**
SO YOU NEVER MISS A CONTENT!





LOCAL AMENITIES

A GULF COAST LIFESTYLE WITH HISTORY AND HEART



Life in Pensacola and the Emerald Coast blends coastal relaxation with local pride. Pensacola has deep historical roots, a strong military presence, and a growing downtown scene with restaurants, galleries, music, festivals, and community events.

Across the Emerald Coast, lifestyle shifts by area. Pensacola feels historic and local. Gulf Breeze and Navarre feel residential and beach-connected. Destin and 30A feel more vacation-driven, polished, and luxury-oriented.

LIFESTYLE HIGHLIGHTS

- Beach days and boating
- Local seafood and waterfront dining
- Historic downtown Pensacola
- Military and aviation culture
- Festivals, farmers markets, and community events
- Golf, fishing, kayaking, and paddleboarding
- Walkable beach towns along 30A
- Family-friendly suburbs and quieter inland communities





LOCAL AMENITIES

WHERE TO SHOP



Shopping along the Emerald Coast ranges from everyday conveniences to boutique beach-town retail. Pensacola offers a mix of local shops, shopping centers, and downtown storefronts, while Destin and 30A are known for more elevated coastal shopping experiences.

POPULAR SHOPPING AREAS

DOWNTOWN PENSACOLA

A great place for local boutiques, gifts, art, and walkable shopping paired with restaurants and coffee shops.

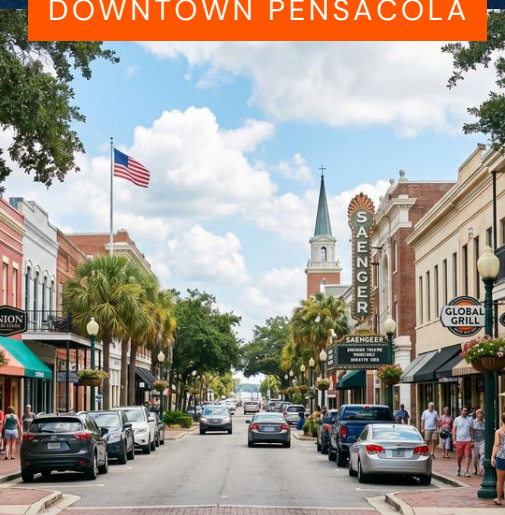
CORDOVA MALL AREA

One of Pensacola's major retail hubs with national brands, department stores, and everyday shopping options.

SILVER SANDS PREMIUM OUTLETS

A major shopping destination near Destin and Miramar Beach, popular with both residents and visitors.

DOWNTOWN PENSACOLA



CORDOVA MALL AREA

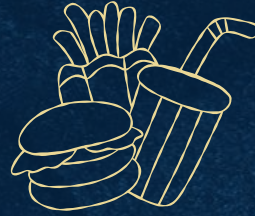


SILVER SANDS PREMIUM



LOCAL AMENITIES

WHERE TO DINE



COASTAL FLAVOR, SEAFOOD, AND LOCAL FAVORITES

The food scene across Pensacola and the Emerald Coast is heavily influenced by the Gulf. Seafood, waterfront dining, casual beach restaurants, Southern flavors, and chef-driven concepts are all part of the local experience.

Pensacola has a strong downtown dining scene, while Destin and 30A are known for waterfront restaurants, vacation dining, and elevated coastal menus.

GULF BREEZE AND NAVARRE

Offer a mix of family-friendly restaurants, local seafood, and convenient neighborhood dining.

FORT WALTON BEACH

A practical dining scene with seafood, casual spots, and restaurants serving military families and locals.

DESTIN

Known for harborfront restaurants, seafood, vacation dining, and boating culture.

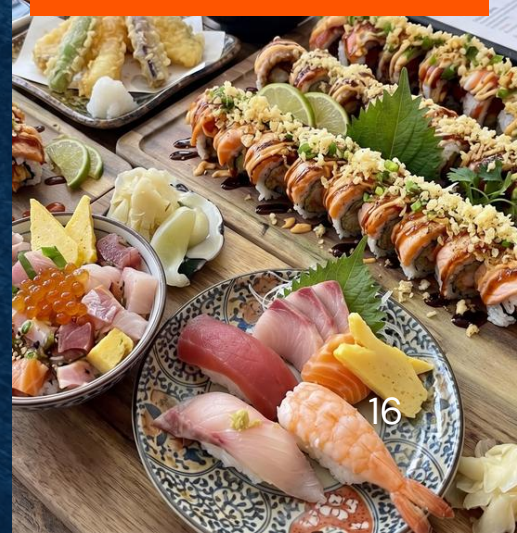
THE POINTE



DEWEY DESTIN



THE SLIPPERY MERMAID



LOCAL AMENITIES

THINGS TO DO



BEACHES, HISTORY, WATER, AND YEAR-ROUND ACTIVITIES

The Emerald Coast is built around outdoor living. Whether you enjoy beach days, fishing, boating, golf, history, or local events, there is always something to explore.

Pensacola adds another layer with historic sites, military aviation, museums, downtown events, and local festivals. Further east, Destin and 30A offer resort-style recreation, scenic beach towns, and vacation-quality amenities.

TOP ACTIVITIES

- Visit Pensacola Beach
- Explore Downtown Pensacola
- Tour the National Naval Aviation Museum
- Watch the Blue Angels when practice schedules allow
- Visit Fort Pickens and Gulf Islands National Seashore
- Spend the day at Navarre Beach
- Go boating or fishing in Destin
- Walk, shop, and dine along 30A
- Explore Seaside, Rosemary Beach, Alys Beach, Grayton Beach, and WaterColor
- Paddleboard, kayak, golf, or enjoy local parks
- Attend local festivals, markets, and community events

BOATING OR FISHING



WATCH THE BLUE ANGELS



VISIT FORT PICKENS







SCHOOLS & UNIVERSITIES

EDUCATION OPTIONS ACROSS THE EMERALD COAST

Families relocating to Pensacola and the Emerald Coast often compare schools by district, commute, programs, and neighborhood fit. Public school options vary by county and city, so it is important to research the specific school zones tied to each property.

The region also offers access to colleges, universities, technical training, and continuing education opportunities.

EDUCATION RESOURCES TO KNOW

- Escambia County Public Schools
- Santa Rosa County District Schools
- Okaloosa County School District
- Walton County School District
- University of West Florida
- Pensacola State College
- Northwest Florida State College
- Private, charter, and faith-based school options in select areas

Local Tip

School zoning can be property-specific. Always verify school assignments directly before making a final home decision.



MEDICAL ACCESS ACROSS THE REGION

Pensacola and the Emerald Coast offer access to hospitals, specialty care, urgent care, primary care, and medical offices throughout the region. Larger medical hubs are concentrated in Pensacola, with additional healthcare access in Fort Walton Beach, Destin, and surrounding communities.

For retirees, military families, and relocating buyers, proximity to healthcare can be an important factor when choosing a neighborhood.

HEALTHCARE FACILITIES AND SYSTEMS TO KNOW

- Baptist Health Care
- Ascension Sacred Heart Pensacola
- HCA Florida West Hospital
- Nemours Children's Health, Pensacola
- Santa Rosa Medical Center
- HCA Florida Fort Walton-Destin Hospital
- Ascension Sacred Heart Emerald Coast

Local Tip

If healthcare access is a major priority, compare drive times to hospitals and specialists before choosing between Pensacola, Navarre, Fort Walton Beach, Destin, and 30A.



LOCAL AMENITIES

MAJOR EMPLOYERS

The Pensacola and Emerald Coast economy is shaped by several major industries, including military and defense, healthcare, financial services, tourism, hospitality, education, construction, and small business.

Military installations and defense-related employment play a major role in the region.

MAJOR EMPLOYMENT DRIVERS

- Navy Federal Credit Union
- Naval Air Station Pensacola
- Eglin Air Force Base
- Hurlburt Field
- Baptist Health Care
- Ascension Sacred Heart
- HCA Florida healthcare facilities
- University of West Florida
- Pensacola State College
- Tourism, hospitality, and resort businesses
- Local government, education, and defense contractors

Local Tip

Your ideal location may depend on where you work. Living in Pensacola, Gulf Breeze, Navarre, Fort Walton Beach, Destin, or 30A can create very different commute patterns.





MATCH THE AREA TO YOUR REAL LIFE

FIND THE RIGHT NEIGHBORHOOD



 **WATCH NOW**

Choosing the right home on the Emerald Coast starts with choosing the right lifestyle. The best neighborhood is not always the one with the most online attention. It is the one that fits your commute, budget, daily routine, school needs, insurance comfort level, and long-term plans.

Pete Sweeney helps buyers compare the areas honestly, including the pros, trade-offs, and details that are difficult to understand from listing photos alone.

What to Consider

- Do you want to be near the beach or farther inland?
- Do you prefer a newer home or an established neighborhood?
- Is commute time a top priority?
- Are schools or healthcare access important?
- Do you need military base proximity?
- Are you considering rental potential or a second home?
- Are you comfortable with HOA fees or condo rules?
- Have you reviewed flood zone and insurance considerations?

Before falling in love with a home, make sure the area supports the life you want to live every day.



CITY / AREA GUIDES

PENSACOLA



Pensacola is the cultural and historic center of the western Emerald Coast. It offers downtown energy, established neighborhoods, military heritage, medical access, local dining, and convenient access to Pensacola Beach.



GULF BREEZE



Gulf Breeze sits between Pensacola and Pensacola Beach, one of the most desirable areas for buyers who want coastal access with a residential feel. It offers a quieter pace while keeping you close to beach and city conveniences.



NAVARRE



Navarre is known for its relaxed beach-town atmosphere and strong family appeal. It offers access to Navarre Beach, quieter neighborhoods, and a more laid-back coastal lifestyle compared to busier destinations.



MILTON



Milton offers a much quieter, more spacious lifestyle north and east of Pensacola. It has a charming small-town feel, access to scenic rivers and outdoor recreation, and great options for buyers looking for more room.





PACE

[READ MORE](#)

Pace is one of the popular suburban areas near Pensacola, known for growth, convenience, and family-friendly neighborhoods. Many buyers consider Pace when they want newer homes, more space, and access to essentials.



FORT WALTON

[READ MORE](#)

Fort Walton Beach offers a practical coastal lifestyle with military ties and access to beaches, bases, and amenities. It is near Eglin Air Force Base and Hurlburt Field, making it popular with military families and defense workers.



DESTIN

[READ MORE](#)

Destin is one of the Emerald Coast's recognized beach destinations, known for boating, fishing, emerald water, luxury homes, vacation properties, and a strong tourism economy. It has a resort-style feel than Pensacola or Navarre.



30A

[READ MORE](#)

30A is a scenic stretch of beach communities known for architectural charm, luxury coastal living, walkable town centers, boutique shopping, and a polished lifestyle. Each community has its own feel, from Seaside and WaterColor to Alys Beach, Rosemary Beach, Grayton Beach, Seagrove.



FREQUENTLY ASKED QUESTIONS

FAQS



IS PENSACOLA A GOOD PLACE TO LIVE?

Yes. It offers great coastal living, rich local culture, and beautiful beach access with a relaxed pace. You will find an excellent mix of historic, suburban, and military communities here.



WHAT IS THE BEST AREA TO LIVE NEAR PENSACOLA?

It depends on your lifestyle. Pensacola brings city culture, Gulf Breeze offers beach proximity, Navarre is a quiet coastal town, while Pace and Milton provide more space for buyers.



WHAT IS 30A KNOWN FOR?

30A is famous for scenic beach communities, luxury homes, walkable town centers, and boutique shopping. It features iconic spots like Seaside, Rosemary Beach, and high-end coastal living.



DO I NEED TO WORRY ABOUT FLOOD ZONES?

Yes. You must carefully review flood zones, elevation, and insurance requirements when buying near the coast. This is vital for any low-lying, beach-area, or waterfront property.



IS THE EMERALD COAST MOSTLY FOR RETIREES?

No. The area draws a diverse mix of families, military buyers, retirees, and remote workers. Each distinct neighborhood has its own personality to match your specific lifestyle goals.



CAN I BUY A HOME BEFORE RELOCATING TO PENSACOLA?

Yes. Many buyers easily start the process remotely using virtual tours, video calls, and local consultations. Partnering with a neighborhood expert reduces guesswork before you arrive.



WHAT SHOULD I CONSIDER BEFORE MOVING TO THE EMERALD COAST?

Evaluate local school zones, daily commutes, beach traffic, HOA rules, and property maintenance. Don't forget to factor in essential costs like coastal homeowners and flood insurance.



READY TO MAKE YOUR MOVE TO

PENSACOLA IN THE EMERALD COAST?



Relocating should feel exciting, not overwhelming. Whether you are comparing Pensacola, Gulf Breeze, Navarre, Milton, Pace, Fort Walton Beach, Destin, or 30A, Pete Sweeney and the Emerald Coast Relo Team can help you understand the areas clearly before making your move.

From neighborhood guidance and virtual tours to local insight and honest real estate advice, the goal is to help you choose the right home and the right community for your lifestyle.



Email: info@emeraldcoastrelo.com

Call Us: (850) 733-6337

www.emeraldcoastrelo.com



EMERALD
coast
RELOCATION
EXPERTS

www.emeraldcoastrelo.com