

# 2022 Bountiful MTB

## Team T - BMTB

*Style:* Next Level - Unisex CVC Short Sleeve Crew - 6210

4.3 oz./yd<sup>2</sup>, 60/40 combed ringspun cotton/polyester, 32 singles  
Fabric laundered  
Set-in CVC 1x1 baby rib collar  
Side seams  
Tear away label

SHIRT COLOR

RED

INK COLOR

WHITE



FRONT

BACK

FRONT:

### Front graphic

Use the above mock-up for placement

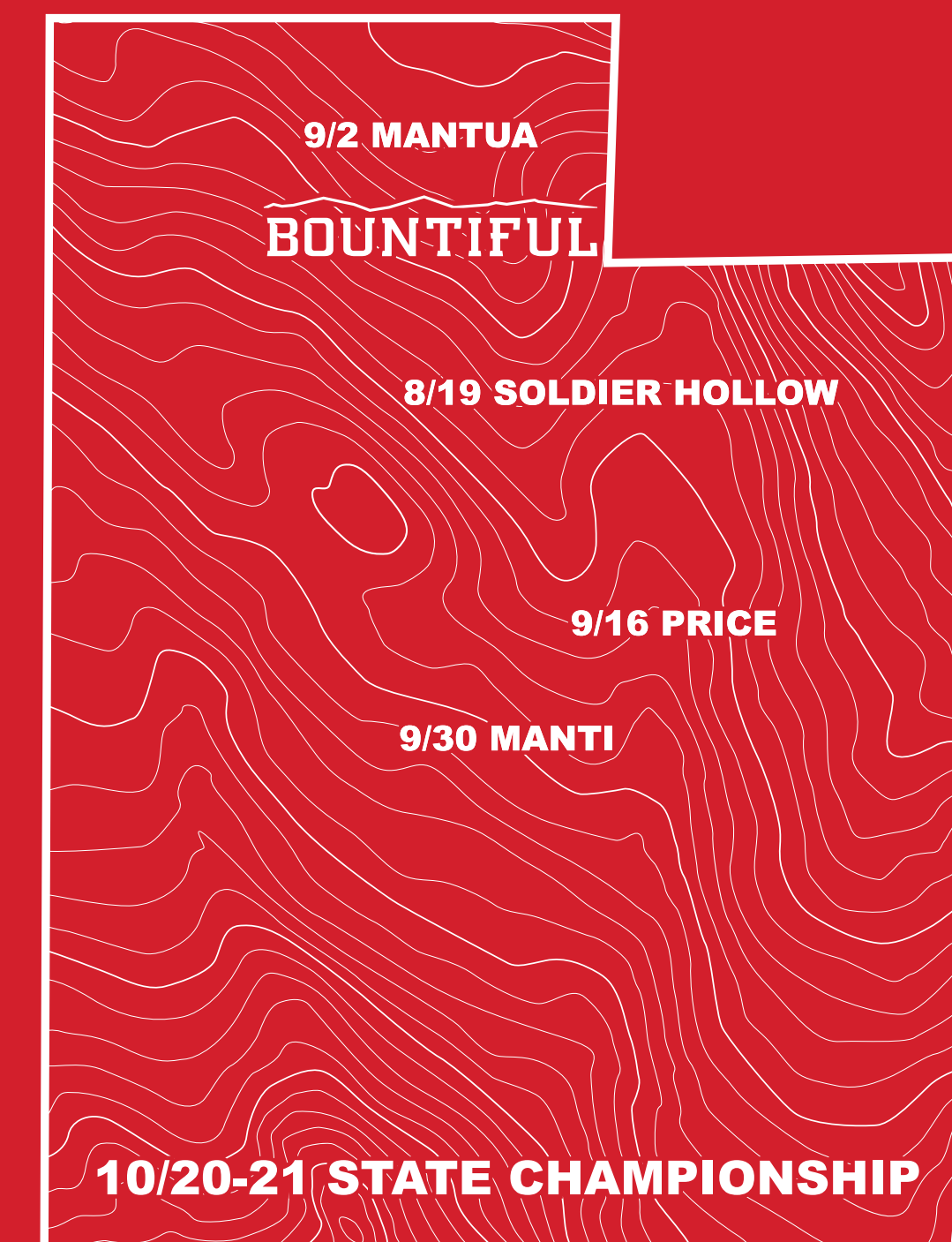
Artwork here is at 100%.

BACK:

Artwork here is at 100%.

Use the above mock-up for placement.

# BOUNTIFUL



# 2022 Bountiful MTB

*Style:* Midweight Sweatshirt - SS3000

8.5 oz./yd<sup>2</sup> (US) 14.1 oz./L yd. (CA), cotton/polyester blend fleece  
Solid Colors & Gunmetal Heather: 80/20 cotton/polyester with 100% cotton 20 singles face yarn

Grey Heather: 75/25 cotton/polyester

All other Heather Colors: 55/45 cotton/polyester (Charcoal Heather, Classic Navy Heather, Royal Heather, Army Heather)

Standard fit

Split stitch double needle sewing on all seams

Twill neck tape

1x1 ribbing at collar, cuffs and waistband

Tear away neck label

SHIRT COLOR

RED

INK COLOR

WHITE



FRONT



BACK

FRONT:

## Front graphic

Use the above mock-up for placement

Artwork here is at 100%.

BOUNTIFUL

BACK:

Artwork here is at 100%.

Use the above mock-up for placement.



# 2022 Bountiful MTB

*Style:* Midweight Hooded Sweatshirt - SS4500

8.5 oz./yd<sup>2</sup> (US) 14.1 oz./L yd (CA), 80/20 cotton/polyester blend fleece with 100% cotton face, 20 singles (Solid, Camo Colors & Gunmetal Heather)  
Heather colors, Safety Colors, Neon Pink are 55/45 cotton/polyester  
Grey Heather is 75/25 cotton/polyester  
Standard fit  
Jersey lined hood  
Split-stitched double-needle sewing on all seams  
Twill neck tape  
1x1 ribbing at cuffs & waistband  
Metal eyelets

SHIRT COLOR



RED

INK COLOR



WHITE



FRONT



BACK

FRONT:

## Front graphic

Use the above mock-up for placement

Artwork here is at 100%.

BACK:

Artwork here is at 100%.

Use the above mock-up for placement.



# 2022 Bountiful MTB

*Style:* BELLA + CANVAS - Unisex Joggers - 3727

7 oz./yd<sup>2</sup>, 52/48 Airlume combed and ringspun cotton/polyester, 32 singles  
Athletic Heather: 90/10 Airlume combed and ringspun cotton/polyester  
Heather Navy: 60/40 Airlume combed and ringspun cotton/polyester  
Unisex sizing  
Side pockets  
Ribbed ankle cuffs  
Elastic waistband with grommet and white drawcord  
Side seams  
Tear away label

COLOR

CHARCOAL

INK COLOR

WHITE



FRONT



BACK

FRONT:

## Front graphic

Use the above mock-up for placement

Artwork here is at 100%.



# 2022 Bountiful MTB

Style: Unisex Full Custom Windbreaker Full-Zip Jacket



# 2022 Bountiful MTB

*Style:* Nylon Anorak - EXP94NAW Rain Coat

100% nylon 330D with Interior PU waterproof coating

Nylon Outer Shell: Waterproof Coating = Level 3

Inner PU Coating: Breathability/Permeability = 5,000

Water Pressure Resistance = 10,000 mm

Matte metal zipper pull

Rubber zipper pull tab

Zipper garage

Single layer body with fine mesh hood liner

Matte nickel metal eyelets

3 panel hood, Scuba neck

Round poly drawstring

Hidden snaps inside front pocket flap

Side slit pockets

Tightening toggle at waistband

Elastic cuffs

COLOR

GRAPHITE

INK COLOR

WHITE



FRONT

FRONT:

## Front graphic

Use the above mock-up for placement

Artwork here is at 100%.

## Silver Reflective



# 2022 Bountiful MTB

Style: Decky - 5 Panel High Profile Cotton/Poly Blend Rope Hat - 6032

Grey/Charcoal



FRONT:

Front graphic

Use the above mock-up for placement

Artwork here is at 100%.



# 2022 Bountiful MTB

Style: Full Custom Flat Bill Trucker - Fabric Back



FRONT:

## Front graphic

Use the above mock-up for placement

Artwork here is at 100%.

- WHITE
- BLACK
- SILVER

Inside Taping



# 2022 Bountiful MTB

*Style:* Unisex Independent Trading Co. - Midweight Fleece Shorts - IND20SRT+

Item #: 01676

8.5 oz./yd<sup>2</sup> (US) 14.2 oz./L yd (CA), 80/20 ring-spun cotton/polyester blend fleece with 100% cotton face, 32 singles

Grey Heather: 52/48 cotton/polyester

Elastic waistband with shoestring drawcord

Sewn eyelets

Sewn fly detail

Back pocket & Jersey lined hand pockets

Relaxed fit with tapered knee opening

Tear away label

COLOR

BLACK

INK COLOR

WHITE



FRONT:

## Front graphic

Use the above mock-up for placement

Artwork here is at 100%.

**Color: Black**

Also comes in YOUTH in the following colors

Black	Forest Camo	Nickel
Heather		





Designer: \_\_\_\_\_

Sales: \_\_\_\_\_

- Version 1
- 2
- 3
- 4

Colors:



Zipper:

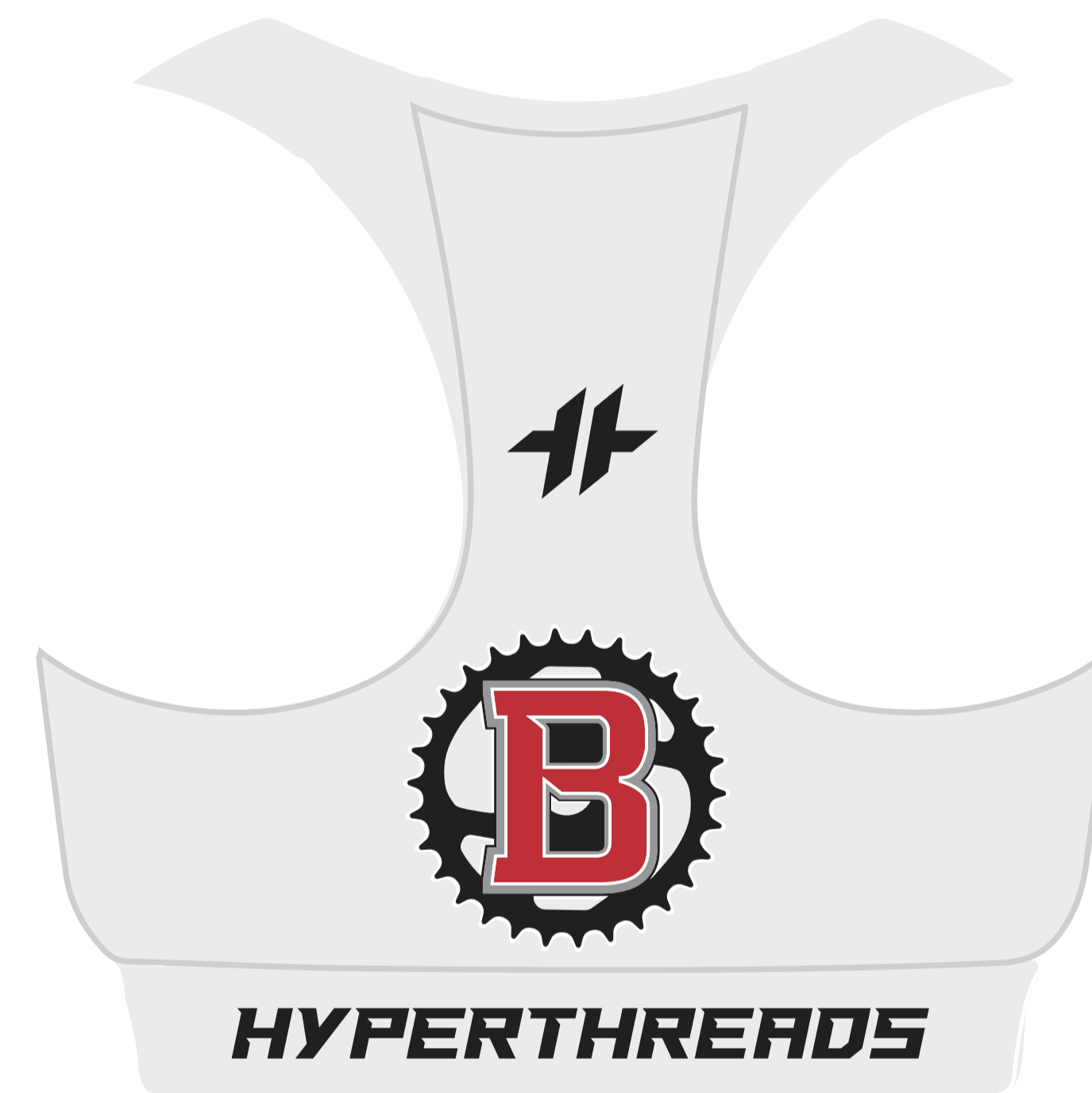


Stitch:



Print:

Normal  Neon





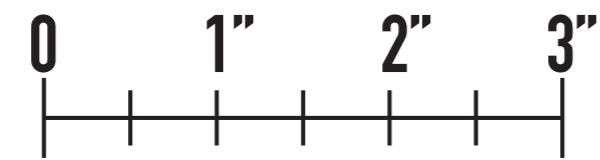
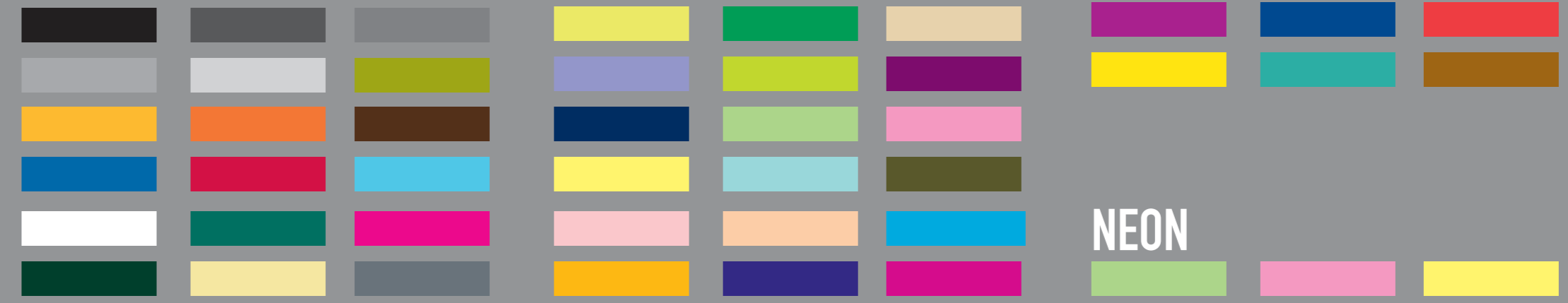
**HYPERTHREADS**

KNIT SOCKS

CUSTOMER NAME

- ZONE 1 - Cuff
- ZONE 2 - Heel/Toe
- ZONE 3 - Foot Bottom
- ZONE 4 - Foot Top

Colors:



Left Sock Outside

Right Sock Outside

Back

Front

7"

6"

5"

4"

3"

2"

1"

