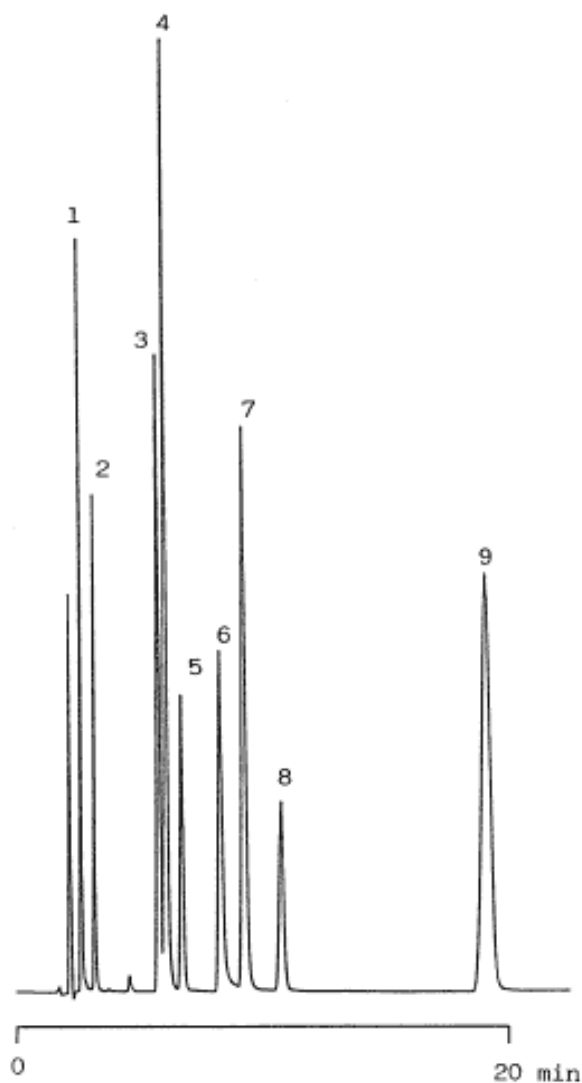


### 1. Food additives

Data No. LA056-0000



Column : Inertsil Ph  
5µm  
150 × 4.6 mm I.D.

Column Cat. No. : 5020-01301

Eluent : CH<sub>3</sub>CN/50 mM KH<sub>2</sub>PO<sub>3</sub> + 0.1 % H<sub>3</sub>PO<sub>4</sub> = 25/75

Flow rate : 1.0 mL/min.

Col. Temp. : 40°C

Detection : UV 230 nm

Injection Vol. :

Sample : Food Additives

Solutes : 1. Sodium saccharin  
2. p-Hydroxy benzoic acid  
3. Sorbic acid  
4. Benzoic acid  
5. p-Hydroxy benzoic acid methyl ester  
6. Dehydroacetic acid  
7. p-Toluic acid  
8. p-Hydroxy benzoic acid ethyl ester  
9. p-Hydroxy benzoic acid n-propyl ester