

Real Feel 2-in-1 Potty

INSTRUCTIONS



2AAA Batteries (1.5v) included

WARNING:

ADULT ASSEMBLY REQUIRED- Must be assembled per instructions before use by child

WARNING:

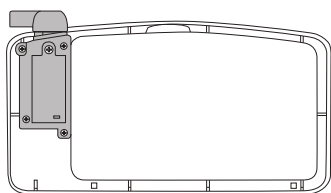
- NEVER leave child unattended
- DO NOT use Real-Feel potty seat on cushioned toilet

- Do not mix old and new batteries.
- Do not mix alkaline, standard (carbon-zinc), or rechargeable batteries.
- Do not recharge non-rechargeable batteries.
- Only Insert the batteries with the correct polarity (+ and -)
- Remove exhausted batteries and dispose promptly.
- Remove all contents from packaging and discard box.
- If any parts are missing, email support@joolbaby.com or call Jool Baby customer service at 888-788-JOOL (5665). You can also visit our website at www.joolbaby.com

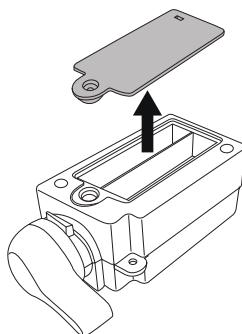


PLEASE READ ALL INSTRUCTIONS PRIOR TO USE

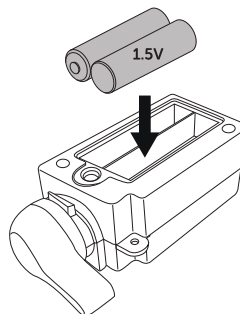
BATTERY INSTRUCTIONS



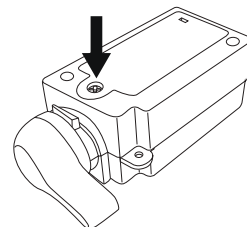
Locate battery compartment attached to flush handle in tank lid.



1 Using a standard phillips screwdriver, unscrew battery compartment and remove cover.

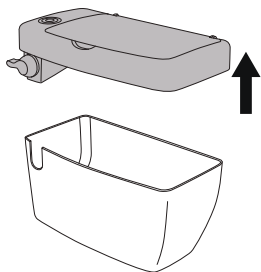


2 Insert 2 AAA batteries as illustrated.

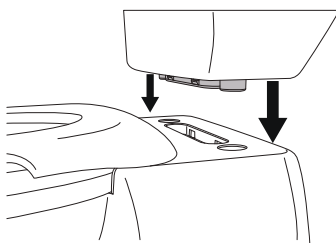


3 Return cover and screw closed.

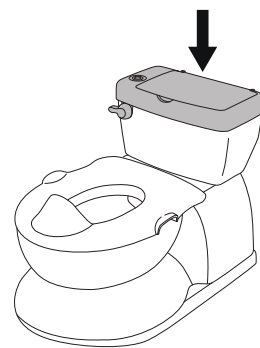
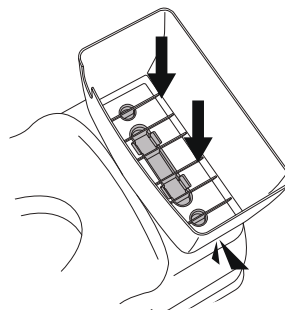
ASSEMBLY INSTRUCTIONS



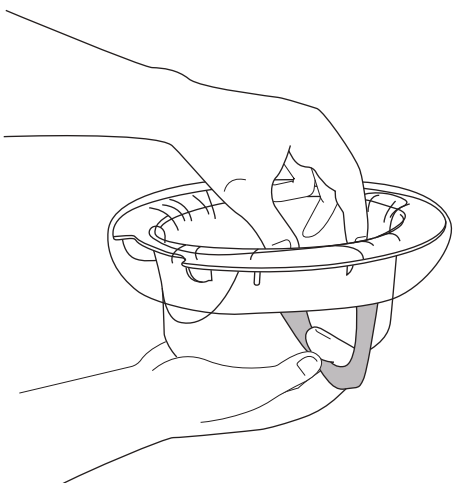
1 Remove lid from the top of the tank.



2 Insert the tank into the holes on the base, push firmly until all 4 snaps lock in.



3 Place lid back onto the top of the tank.



JOOL BABY POTTY LINERS

Scan the QR code to purchase
on Joolbaby.com

