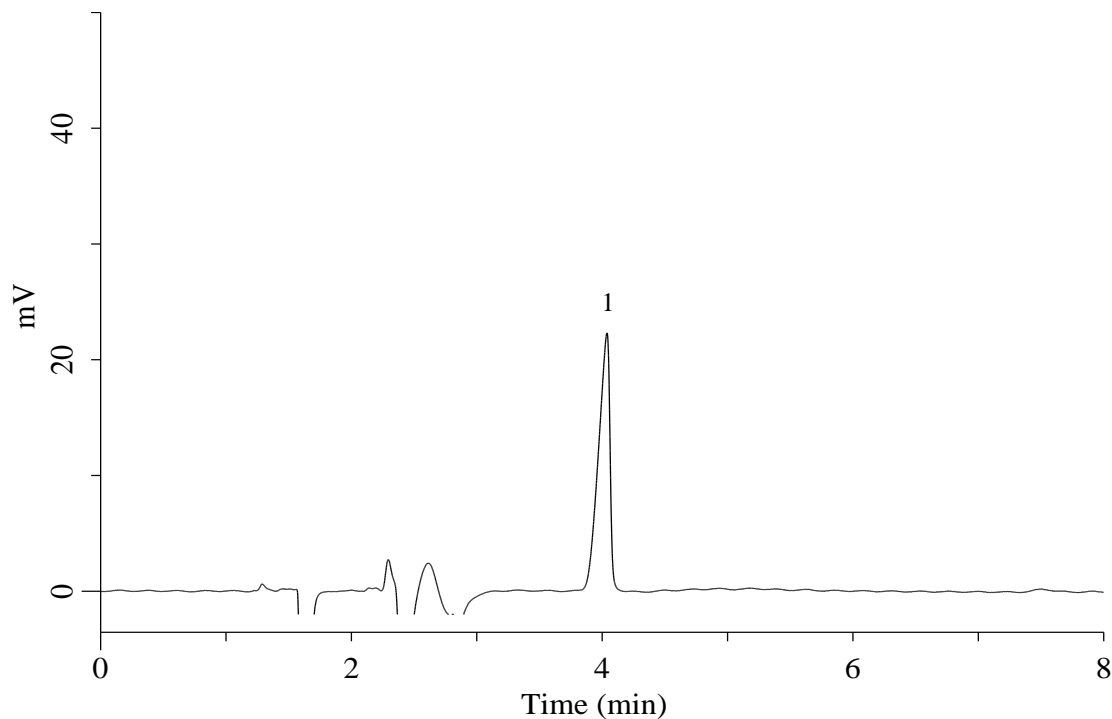


# InertSearch for LC

Inertsil Applications

## Analysis of L-Cysteic acid

Data No. LB762-0806



### Conditions

**Column** : InertSustain AX-C18 (GL Sciences Inc.)  
(3  $\mu$  m, 150 x 2.1 mm I.D.)  
**Column Cat. No.** : 5020-91039  
**Eluent** : (10 mM HCOONH<sub>4</sub> + 0.1% HCOOH) in H<sub>2</sub>O  
**Flow Rate** : 0.2 mL/min  
**Col. Temp.** : 40 °C  
**Detection** : UV 210 nm  
**Injection Vol.** : 1  $\mu$  L  
**Sample** : Standard

**Analyte:**  
1. L-Cysteic acid 1,000 mg/L