

Clinical CAD CAM

3shape 

UNICORN DenMart 
Behind The Best Indian Dentists



SHINING 3D
DENTAL

Scan
WITHOUT LIMITS

PAN INDIA PRESENCE

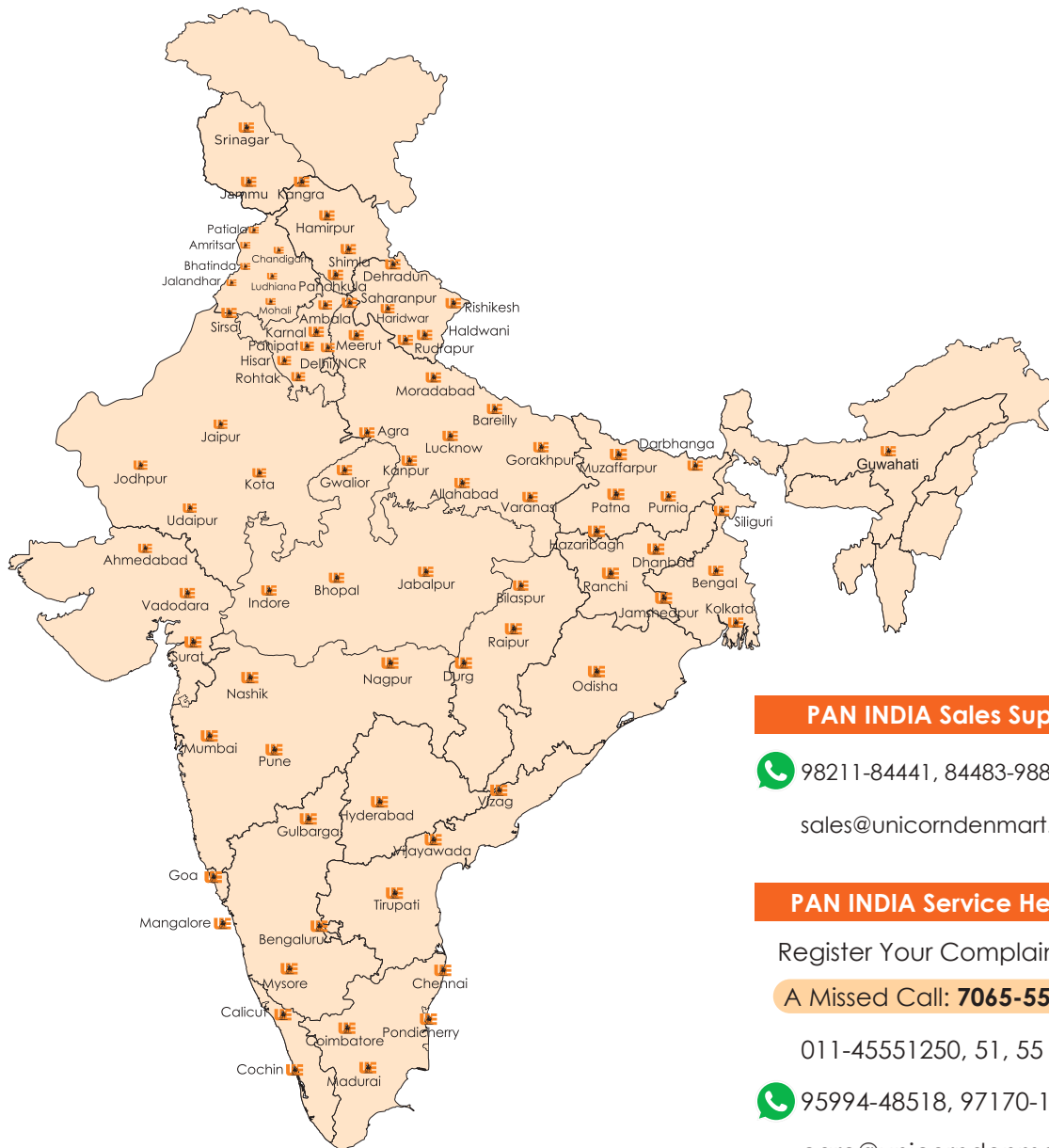
1.5 Lakh+
Satisfied
Customers

150+
Skilled Service
Engineers

100+
PAN India
Location

500+
Products Under
Service Care

32
Year
Legacy



PAN INDIA Sales Support

98211-84441, 84483-98852

sales@unicorndenmart.com

PAN INDIA Service Helpline

Register Your Complaint with

A Missed Call: **7065-558-558**

011-45551250, 51, 55

95994-48518, 97170-12081

care@unicorndenmart.com;
care1@unicorndenmart.com

FOR WESTERN REGION: (Maharashtra & Gujarat)

022-40108770, 71

*The locations shown above are a combination of the offices of Unicorn DenMart and its distributors.

Aoralscan Elite More than an IOS

IntraOral Scanner

IPG Intraoral photogrammetry Technology: is the first of its kind in Digital Dentistry, where Intraoral scanning meets PhotoGrammetry in one device.

IPG + SCAN

**Two-in-one
System**



**High
Precision**



**High
Efficiency**



The Aoralscan Elite is the world's first device to integrate both intraoral scanning and photogrammetry into a single unit. The device functions as a standard intraoral scanner (IOS) for capturing images of dentulous cases, allowing for detailed scans of teeth and oral structures. Additionally, it serves as a photogrammetry system, which is used to accurately record the position of dental implants in edentulous cases. This dual functionality makes it versatile for both traditional dental work and advanced implant procedures. This groundbreaking innovation allows for comprehensive dental imaging and precise implant positioning, setting a new standard in dental technology.

Smooth Scanning for Edentulous Cases

IPG technology ensures a seamless scanning experience for edentulous patients. Aoralscan Elite Adopts the IPG tip, which is larger than standard, to capture every detail of the edentulous patient's oral geometry with unparalleled clarity.

124g Slim and Light

Aoralscan Elite Intraoral scanner combines a compact size and lightweight structure. The ergonomic design allows Elite to fit into a hand comfortably, enhancing usability and convenience.

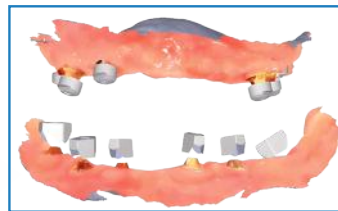
- ✦ Ultra-lightweight (124g)
- ✦ Compact dimensions (245x30x26mm)



Aoralscan Elite

2-in-1

The Aoralscan Elite is the world's first device to integrate both intraoral scanning and photogrammetry into a single unit. The device functions as a standard intraoral scanner (IOS) for capturing images of dentulous cases, allowing for detailed scans of teeth and oral structures. Additionally, it serves as a photogrammetry system, which is used to accurately record the position of dental implants in edentulous cases. This dual functionality



IPG for All-on-X



IOS for normal cases

makes it versatile for both traditional dental work and advanced implant procedures. This groundbreaking innovation allows for comprehensive dental imaging and precise implant positioning, setting a new standard in dental technology.

Smooth Scanning for Edentulous Cases

IPG technology ensures a seamless scanning experience for edentulous patients. Aoralscan Elite Adopts the IPG tip, which is larger than standard, to capture every detail of the edentulous patient's oral geometry with unparalleled clarity.



ConsulReport: A ConsulReport is a record created by a dentist after an oral examination that includes information on the type of disease, a description, and a treatment plan.

ConsulOS: The ortho-treatment process can be simulated, and patients will be able to preview the post-treatment effect in advance.

MetronTrack: With the measurement and comparison functions, it helps improve dentist-patient communication efficiency and effectiveness by tracking patients' data.

AccuDesign: Orthodontic or restoration models can be easily designed with AI for printing.

CreSplint: A smart tool that allows users to design retainers or night guards automatically with minimum operation.

CreTemp: Temporary crowns can be designed and printed in the clinic, reducing the patient's waiting time.

CreIBT: Designs an indirect bonding tray, which can be directly 3D printed to help orthodontists attach brackets faster and more accurately.

Aoralscan Elite

Lifetime Oral Health Management with SHINING 3D

Elevate your dental practice with Shining3D's cutting-edge solutions for lifelong oral health management. Experience the freedom and precision of the Aoralscan 3 Wireless, seamlessly integrated with the MetiSmile face scanner for comprehensive patient imaging. Enhance your diagnostics and treatment planning with the advanced MetronTrack comparison tool, all while ensuring secure, cloud-based data storage. Keep track of progress and collaborate effectively with your patients, setting a new standard in dental care with Shining3D.



SHINING 3D Dental Cloud

Standard and unlimited – seamless collaboration between dentists and technicians. SHINING 3D dental cloud allows for data transfer and communication between dental clinics and labs.

Technical Specifications	
Scan Field of Single Frame	IPG scanner tip: 19mm × 14mm Standard scanner tip: 16 mm × 12 mm Mini scanner tip: 12 mm × 9 mm
Scan Depth	22 mm from exit surface of tip
Scan Principle	Non-contact scanner with structured light and Intraoral photogrammetry
Dimension (L × W × H)	245 mm x 30 mm x 26 mm
Weight	124 g (without cables)
Output	STL, OBJ, PLY
Connection Port	Type-C

Aoralscan 3 Neo SHINING 3D Intraoral Scanner

Now with Oral Health Report

JUST SCAN IT



Scan for Oral Health Report

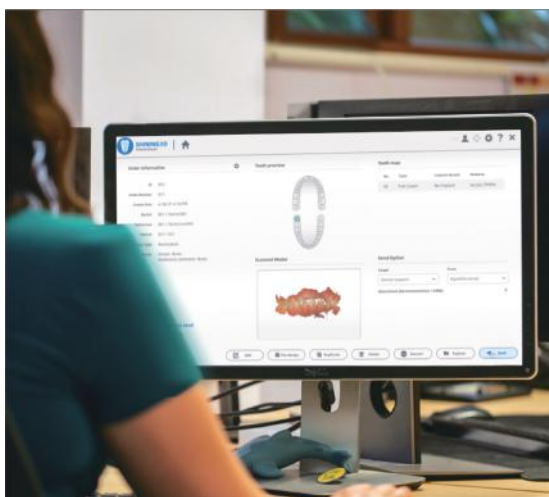
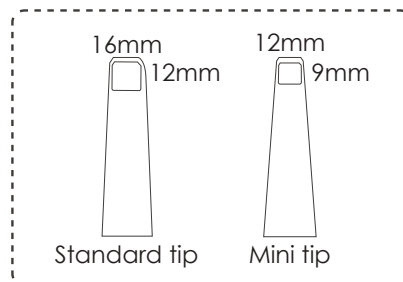
- ✦ One Button Control
- ✦ Light Weight (240g)
- ✦ Auto Anti-fogging
- ✦ Ergonomically Designed
- ✦ AI Mode
- ✦ Dynamic LED Indicator



Technical Specifications	
Scan Field	Standard scanner tip: 16 mm × 12 mm × 22 mm Mini scanner tip: 12 mm × 9 mm × 22 mm
Scan Principle	Non-contact scanner with structured light
Dimension (L × W × H)	281 mm × 33 mm × 46 mm
Weight	240 ± 10 g (without cables)
Output	STL, OBJ, PLY
Connector	USB 3.0
Power Input	12V DC/3 A

Key Features:

- ✦ Fast speed, intuitive communication with motion sensing
- ✦ High accuracy, powerful AI process and realistic color
- ✦ Data cloud platform
- ✦ Ortho stimulation
- ✦ Model making with coordinate adjustments
- ✦ Oral health report - more informed, more engaged



Cloud Platform:

SHINING 3D's cloud data platform enables data transmission, making it convenient for data transfer and communication between clinics and dental labs.

- ✦ Online 3D Data Preview
- ✦ Order Statistics Analysis
- ✦ Order Tracking System

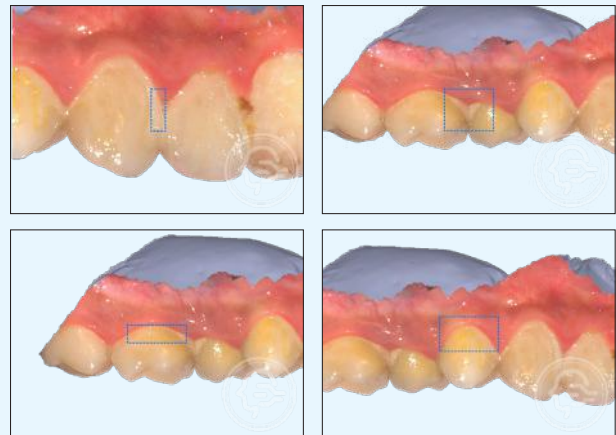
Aoralscan 3 Neo

Application:



Oral Health Report

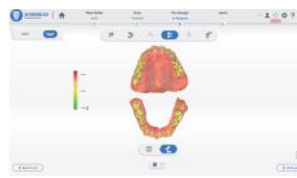
A digital report generated from an intraoral scan that uses AI to identify and display oral diseases, creating a visual treatment plan for communication with patients



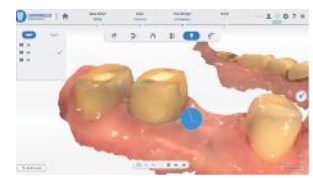
Clinical Toolkit: The clinical toolkit assists dentists to evaluate and pre-design the scanned data in their own clinic. It facilitates effective communication with dental labs to deliver quality dental work with high efficiency.



Undercut Check



Bite Check



Margin Line Auto Extraction



Tooth Marking



Coordinate Adjustment



Direct Export Into Exocad

Ortho Treatment Simulator - See it, Believe it, Get it!

Before Tooth Setup



After Tooth Setup



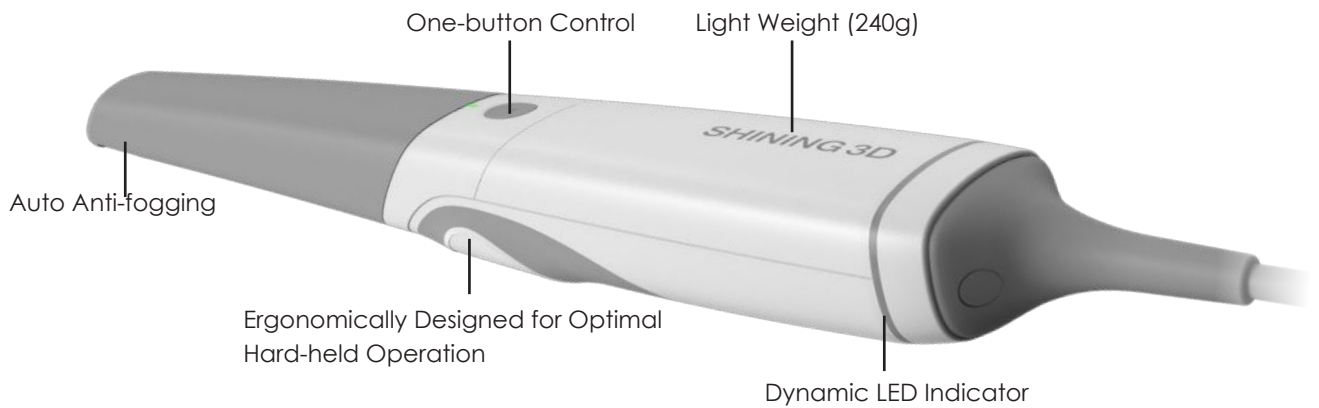
Show your smile to your friends & family even before starting your treatment.



Scan for Live Ortho Simulation

Aoralscan 3

Shining 3D presents his brand-new intraoral scanner, Aoralscan 3. It's a fast scanner with high accuracy and the latest features, which makes your experience with digital scans better. The latest AI technology makes our workflow more accurate. Now, with the new ortho simulation feature, you can encourage your ortho patient for the treatment with the pre- and post-treatment videos and photographs.



ConsulOS

Revolutionize how dentists interact with their patients: Through vivid 3D simulations, dentists can seamlessly illustrate treatment outcomes, enabling patients to visualize and understand anticipated changes.

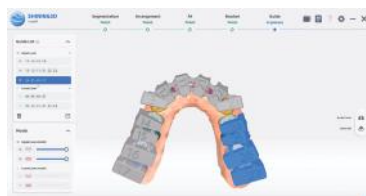


ConsulReport

Oral Health Report: Oral Health Report, is here to revolutionize dentist-patient communication and oral health management. Designed with user-friendly interaction and a simplified layout, this report enhances the effectiveness of communication between dentists and patients. Featuring multiple measurement tools, it provides comprehensive insights into oral health status.

CreSplint

Whether you need a nightguard or a retainer, CreSplint software provides you with an accurate, custom-fit design via an intuitive and user-friendly interface that requires minimal training.



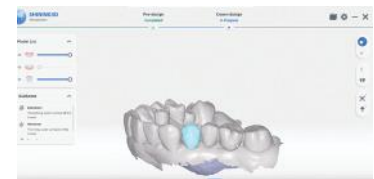
CreIBT

CreIBT makes the creation of indirect bonding trays easy. With CreIBT, orthodontists can accurately attach brackets to teeth, all while benefiting from the convenience of direct 3D printing.

Aoralscan 3

CreTemp

Temporary crowns can be designed and printed efficiently in the office, reducing patient waiting times and providing high-quality care with minimal effort.

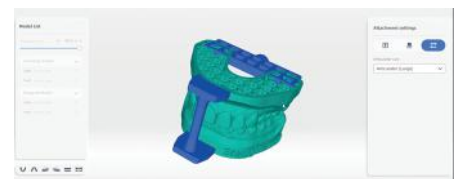


MetronTrack

With features like curve of Spee, overbite and overjet, molar relationship, Bolton ratio, crowding measurement, and Moyer analysis, these multiple measurement tools offer a comprehensive overview of the teeth. The ability to compare various intraoral data enables dentists to monitor and manage the treatment progress.

AccuDesign

AccuDesign enables users to effortlessly create printable models with a single click, streamlining operations and boosting efficiency. The improved support for ABO base significantly enhances its utility in orthodontic applications. Moreover, with the inclusion of articulators, text, and customizable settings, users have the freedom to craft personalized models.



	Aoralscan 3	Aoralscan 3 Neo	Description
Applications	Cre-Temp	NA	Lets user design and print Dental crowns and Bridges
	Splint	NA	Allows user to fabricate splints
	Cre IBT	NA	Allows user to fabricate IBT's
	Metron Track	NA	Tooth movement tracking for aligner cases
Clinical Applications	Edentulous Scanning	Clearance Check	Allows for scanning Edentulous scans with AI turned on
	Clearance Check	Margin Line Detection	Lets user check clearance
	Margin Line Detection	Undercut Detection	Lets user detect undercuts in preparation

Aoralscan Lync SHINING 3D Intraoral Scanner

LESS IS MORE

Ergonomic & Effortless

Aoralscan Lync is the latest intraoral scanner from SHINING 3D. Built on the proven Aoralscan series technology platform, it inherits trusted software and hardware while being re-engineered to focus on what truly matters - efficiency and reliability in digital impressions. It is designed to support a wide range of clinical applications, including implantology, orthodontics, and prosthodontics.



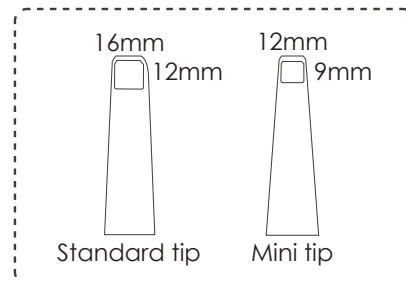
Excellent Ergonomics: Designed for comfortable handling with a pen-like grip, allowing for intuitive and relaxed scanning.



Featherlight Form: Weighing just 116g, its lightweight & compact design ensures fatigue-free operation, even during extended procedures.



Simplified Connection: A single Type-C cable enables instant plug-and-play setup, reducing clutter and enhancing usability.



Excellent Scanning Performance: Aoralscan Lync is the latest intraoral scanner from SHINING 3D. Built on the proven Aoralscan series technology platform, it inherits trusted software and hardware while being re-engineered to focus on what truly matters - efficiency and reliability in digital impressions. It is designed to support a wide range of clinical applications, including implantology, orthodontics, and prosthodontics.



AI Enable: When enabled, the AI function automatically identifies and removes unwanted data points from a scan, such as soft tissue, the tongue, or the cheeks.



Extended Scanning Depth
A depth of field up to 22mm allows for easy capture of fairly deep holes and narrow gaps.



Outstanding Accuracy
Delivers high-precision, reliable scan results across diverse clinical applications.

Technical Specifications	
Scan Field	Std. scanner tip: 16 mm × 12 mm × 22 mm Small scanner tip: 12 mm × 9 mm × 22 mm
Scan Principle	Non-contact scanner with structured light
Dimension	245 mm (L) × 38 mm (W) × 33 mm (H)
Weight	116g (without cables)
Output	STL, OBJ, PLY
Connection Port	Type-C
Power Input	12V DC/ 3A

Aoralscan Lync

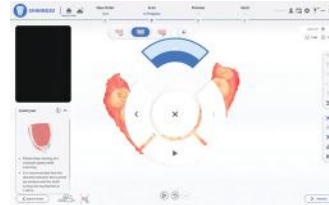
User-friendly Scanning Experience

Designed with the clinician in mind, Aoralscan Lync offers an intuitive and hygienic scanning workflow that fits effortlessly into modern practice settings.



Intuitive Interface

A clean, streamlined UI ensures a more efficient & seamless scanning process.

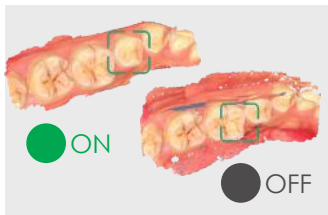


Motion Sensing

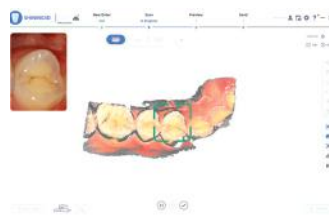
Enables contactless control during scanning, enhancing hygiene & convenience.

Smart Software for Superior Experience

Powered by advanced SHINING 3D software, Aoralscan Lync delivers a smart, streamlined scanning experience backed by powerful algorithms.

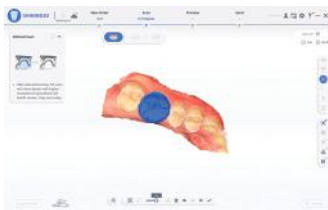


Intelligent Scan: I-driven software automatically removes soft tissue interference for clean, accurate data capture.



Scan Quality Indicator:

Highlights areas lacking data in gray, helping you identify where to rescan for optimal quality.



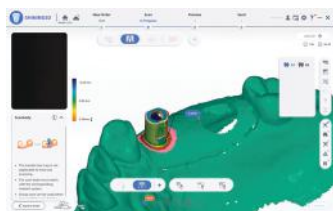
Refined Scan: Captures fine morphology and preparation details with exceptional fidelity.



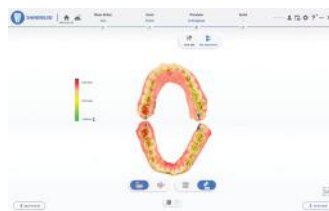
Reliable with Metal Sur-

faces: Scans effectively on metal restorations and darker shades.

Versatile Features for Clinical Excellence

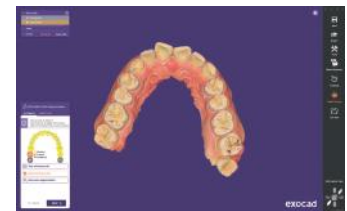


Scanbody Matching: Built-in libraries of major scanbody brands enable precise one-click alignment during scanning, minimizing rework and streamlining the implant restoration workflow.



Bite Detection

Intuitively visualizes occlusal contacts with a heat map and sectional view, helping clinicians assess bite relationships efficiently.



Open-format Export for Design:

Easily exports data in widely supported formats for seamless integration with CAD software like exocad, ensuring smooth and flexible prosthetic design.

Helios 680

DIGITAL INTRAORAL SCANNER- MORE THAN A SCANNER

- ✦ **User-friendly tip:** Powder-free No heating required LED structured-light imaging
- ✦ **Duct optimization:** Enhanced anti-fogging for improved precision
- ✦ **New body design:** Firm body design with durability Fresh look with ergonomic design for easier using
- ✦ **Plug & scan** with only 1 power cable

FLAGSHIP-LEVEL UPGRADE

Performant:



- ✦ 16µm intraoral full-arch precision, 8µm single tooth precision, 30fps frame rate.
- ✦ Enjoy the smooth precision of scanning

Intelligent Automation:

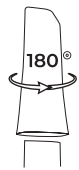


- ✦ Automatic and adaptive color and accuracy calibration
- ✦ No manual calibration required

Renewed:



- ✦ Graceful curves with refined matte finish



Convenient:

- ✦ Removable & 180° reversible tip

Lighter:



- ✦ 161.5g total weight, lighter than ever and easy to hold



Durable:

- ✦ withstand 100 sterilization cycles

Real:



- ✦ 24bit color bits, feel the real color of teeth.
- ✦ Better patient understanding, easier lab color matching



Oral-friendly:

- ✦ improve patient comfort with a smooth, rounded tip design

Cloud-upgraded:



- ✦ Powered by AWS cloud with worldwide coverage, lower latency & greater reliability
- ✦ Enhanced performance for efficient cloud management



AI Report: Smarter Diagnosis, Better Communication. Helios AI Health Report visually presents oral health conditions and treatment plans, streamlining doctor-patient communication.



Orthodontic Simulation: AI-powered automatic tooth alignment provides clear orthodontic before-and-after comparisons, helping doctors build patient confidence in treatment plans. This feature is only supported by NVIDIA graphics cards



Cloud Storage: Enjoy 100GB of cloud storage for free, enabling easy order sharing through Cloud.



Air Mouse: Your scanner can also be a mouse to easily manage the software and rotate the 3D models.



Model Builder: Add bases to 3D models directly within the software, boosting efficiency for orthodontists and making it easier to save and share models.



Auto/Manual Bite



Enhanced Implant Workflow



Shining Mode



Occlusion Analysis



Undercut Detection



Texture Mapping



Tooth Measurement



Margin Line Drawing



Intraoral Camera



Software Update



Auto AI



Swap Upper & Lower Jaw



Automatic Cuff Detection



3D Viewer



APList



Bite Refinement Preview

Technical Specifications		
Accuracy	Full-arch	16µm
	DOF	20mm
Speed	Scan area	16 × 14mm (L) * 3 12 × 12mm (S) * 1
	FPS	30fps
Connectivity	Length	1.8m
	Type	USB3.0
Calibration	Accuracy calibration	Calibration-free
	Color calibration	Calibration-free
Advanced Mode	Remote control	✓
Data	Output format	STL / PLY / OBJ



INTRAORAL SCANNER

Ultimate Design And Elevated Scanning Efficiency

The Nova 900 Intraoral Scanner delivers fast, precise digital impressions with an easy-to-use, lightweight design. Its advanced scanning technology ensures accurate results across various dental procedures while improving efficiency, sterilization, and patient comfort.

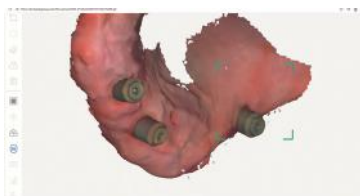
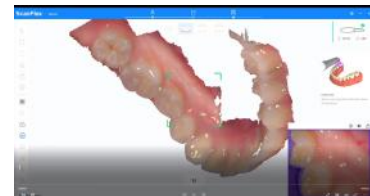
Key Highlights

- ✦ Lightweight & Ergonomic Design
- ✦ High-Speed Scanning Performance
- ✦ Precision-Driven Imaging
- ✦ Smart AI-Powered Workflow
- ✦ Dual Tip Versatility
- ✦ Enhanced Scanning Experience



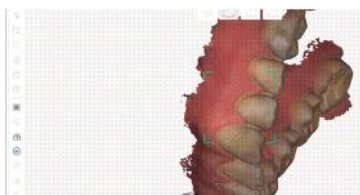
Effortless And Precise Scanning From Start To End

Full-arch Scanning in 25s, Faster Than Ever: Capture every detail with 20 FPS and advanced algorithms, boosting scanning efficiency and patient care



More Precise on Various Indications: The advanced algorithms significantly reduce stitching errors, achieving finer results

Smart Filter: Automatically identifies and filters out all unnecessary data during scanning



Data Reliability Monitor: Detects data quality in real-time during scanning for more precise results

G-Motion: Prevents cross-infection and brings an easier scanning experience



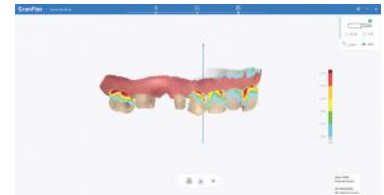
Your Data Evaluation Assistance



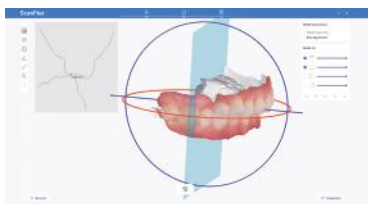
Working Area Selection



Occlusion Analysis



Undercut Analysis



2D Section Measurement



Measurement Tools



Open File Export



Standard Pediatric

2 Scanning Tip Size Options - Meet different clinical needs



Preheat < 30s

Built-in Anti-fogging: Preheat in less than 30s, making continuous scanning more efficient



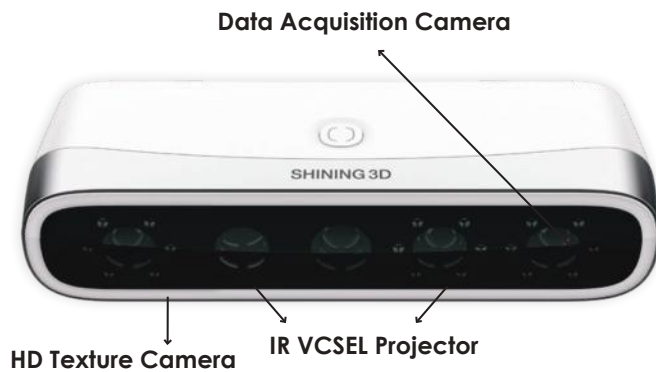
Autoclavable Scanning Tips: Sterilization at 134°C, More than 100 times

Technical Parameters

Scanning Principle	Structured Light (Video)
Accuracy (Single Unit)	10 μm (±1.1 μm)
Scan Speed	20 FPS
Scan Depth	0 – 18 mm
Handpiece Dimensions	247 (L) X 43 (W) X 35 mm (H)
Handpiece Weight	240 g
Field of View (FOV)	Standard: 16 × 13 mm Pediatric: 12 × 9 mm
Scanning Tip Dimensions	Standard: 95.3 × 22.5 × 16.6 mm Pediatric: 94.0 × 17.9 × 13.2 mm
Anti-Fogging Technology	Actively Heated Tip
Autoclavable Tips	Yes (≥100 cycles at 134°C)
Maintenance Method	High temperature & pressure; Immersion
Cable Length	2.0 m
Connection	USB 3.2
Output Formats	STL, PLY, OBJ

MetiSmile - Dental 3D Face Scanner

Beyond Smile



Fast Scan Speed

In just 10 seconds this highly perceptive scanner can take photos of patients from multiple angles to simultaneously construct a 3D facial data.

High Accuracy

Three 1.3 MP data acquisition cameras and one 5.0 MP HD texture camera produce scan accuracy within 50µm. MetiSmile also captures elevated details of the teeth.

High-fidelity Texture

The exceptional texture camera of the MetiSmile can accurately record and display facial color that appears realistic to the patient.

ADVANCED SOFTWARE:

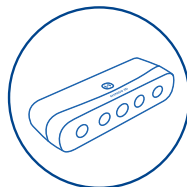
Auto Alignment Between Facial Scan Data and Intraoral Scan Data

The software will align the facial and intraoral scans which displays the patients' facial and oral information in a comprehensive way. The scans are overlapped to provide a better view and perspective for digital smile design that assists in creating more aesthetic restorations for patients.



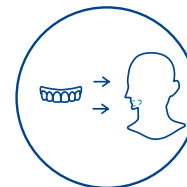
Step 1

Use Intraoral Scanner to add Intraoral data



Step 2

Use MetiSmile to Capture the Facial Data



Step 3

Import Intraoral Data to MetiSmile Software for Auto Alignment

MetiSmile - Dental 3D Face Scanner

Ortho Simulation



Facial Feature Measurement and Comparison



Mandibular Trajectory Tracking



Application

The powerful and advanced software of the MetiSmile makes this product an indispensable tool for digital dental treatment, including maxillofacial surgery, implant and prosthesis, orthodontics, medical cosmetology, etc. It will take your clinic to the next level.

- ✦ Maxillofacial Surgery
- ✦ Implant And Prosthesis
- ✦ Orthodontics
- ✦ Medical Cosmetology
- ✦ Aesthetics Restoration

Outstanding Scanning Performance

The Aoralscan Elite software is equipped with numerous powerful tools to optimize the scanning process and enhance efficiency

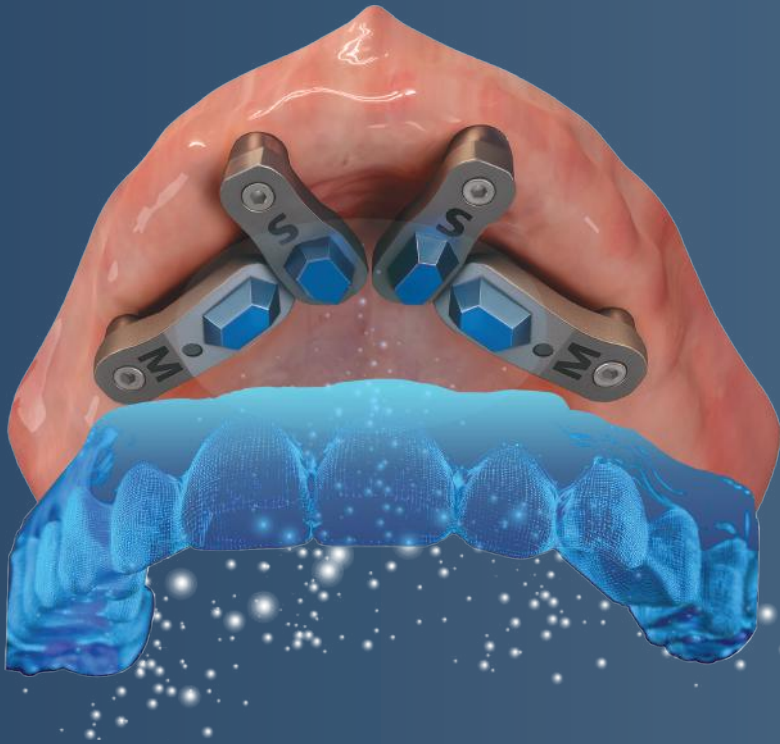
Good User Experience

- ✦ Handheld mode & Fixed mode
- ✦ Eye-friendly flashless scan thanks to infrared technology
- ✦ Automatic brightness adjustment ensures outstanding face texture
- ✦ Guided operation throughout the scan workflow
- ✦ Open system to export STL, OBJ and PLY
- ✦ Elegant and compact, only 800 grams



Technical Specifications

Resolution	Data Acquisition Camera: 1.3 Mega Pixel HD Texture Camera: 5.0 Mega Pixel
Accuracy	50µm
Field of View	With working distance 500mm, the FOV is 210 mm X 270 mm
Output Format	PLY, OBJ, STL
White LED color temperature	5500K
Dimension	215*50*75mm
Weight	800g
Power Supply	Input: AC100-220V~, 50/60HZ, 1.5A
Output	DC12V, 7.0V



ioConnect™ Scan

GIVING YOU MORE
BY DOING LESS



Open System

Compatible with any dental CAD software for data importation and design.



Minimized Scanning Area

Focus on scanning just the blue area to reduce scanning error. Easy access and shorter scanning time.



Effortless MUA Detection with your IOS

Empower your existing IOS (Intra-Oral Scanner) to achieve the same photogrammetry workflow.



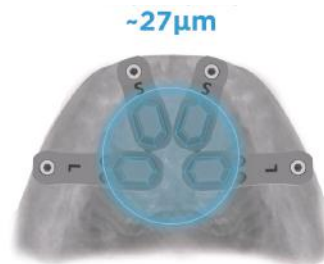
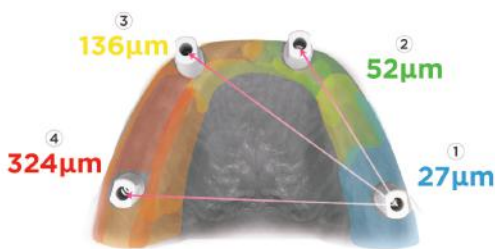
All About Options

Multiple sizes (S, M, L) available for you to choose depending on the implant position and the anatomy of each patient.

Why ioConnect™

A Perfect Example of **Less Is More**

Average scanning accuracy



The ioConnect™ scan bodies are specifically designed to minimize the scanning needed for full-arch cases. Stitching errors are a primary source of inaccuracies, so limiting the scan to the recommended area (the hexagons) helps achieve greater precision with less data. The diagram above illustrates how scanning discrepancies differ between a conventional full-arch scan and the optimized, reduced-area scan using ioConnect™ scan bodies.



TruSuite trusuite.truabutment.com **ioConnect™**



TruSuite is a free software launcher with a variety of CAD capabilities including the **ioConnect™ app**. The application can be used by doctors or labs for conversion depending on each one's workflow. The TruSuite launcher requires a Windows PC and does not require a physical dongle.

Download now

ioConnect™ Product Specifications

Available in various lengths based on implant position and patient anatomy.



INTRA ORAL SCANNER

TRIOS[®] is more than an impression

The Scanner uses confocal microscopy along with ultra fast optical sectioning technology to scan.



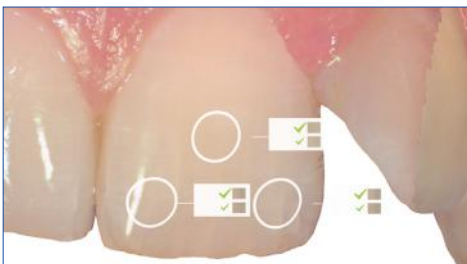
Fast & Easy

Scanning has never been easier for dentists and assistants.



RealColorTM Scans

Create high quality digital impressions in lifelike colors.



Shade Measurement

Measure teeth shades while you scan for more accurate & predictable results.



IOC & HD Photo

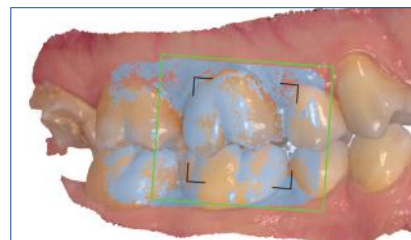
Enhance significant details & accurately set the margin line. No need for separate intraoral camera.



Automatic soft tissue removal

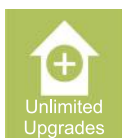


Easy view, edit, rescan



Automatic bite registration

Backing dentists with care, technology and expertise



TRIOS® 5 Wireless TRIOS 5 Wireless - Meet the 5th Generation TRIOS

The Most Powerful 3shape Intraoral Scanner To Date!



Intelligent. The Ultimate TRIOS.

Next-level ergonomics. Effortless scan technology. Hygienic by design.

Our new scan engine avoids stitching errors by reconstructing and building up the 3D model while scanning.

POD Size: Pod diameter 11 cm & Weight: 380 g

Place your TRIOS 5 on the pod in any orientation while not scanning. The pod has been designed for easy cleaning and disinfection between patients for optimal hygiene.

THE SCANNER : Weight (incl. battery): 299 g

Light source: LED

Output format: PLY, DCM and STL

Scanner dimensions (LxWxH cm): 26.6 x 3.7 x 3.8

Tip dimensions (LxWxH cm): 9.5 x 2.26 x 1.95



BATTERY AND USAGE

TRIOS 5 wireless comes with three rechargeable batteries.

Battery duration (non stop scanning): Instant heating and up to 66 minutes of continuous scanning per battery.

Scanner sleep mode: The scanner can stay in sleep mode with the battery inserted for more than 7 days.

Battery charging time: 60 minutes to achieve 80% battery power. Less than 2 hours to achieve 100% battery power.



WIRELESS RANGE

Same room, up to 15 meters.

Scanning over WiFi possible with TRIOS Share NEW TRIOS 5



Body sleeves

TRIOS[®] 5 Wireless

Effortless Scanning

With five generations of experience up our sleeve, we know a thing or two about what makes or breaks a dental scan experience. With TRIOS 5, we've made scanning even smoother, faster and easier.

Calibration free

The scanner is calibration free, meaning you don't need to calibrate after a certain number of scans. It's always ready to use!

Smart haptic feedback

Switching focus between patient and screen can be distracting. That's why the scanner uses haptics – a subtle vibration – to give you feedback.



LED to indicate readiness

A LED ring on the scanner indicates the status of the scanner: it tells you when it's connected, low on battery, or the tip is ready, for example. You'll know if you're scan-ready with just a glance.

Remote control button

Use your scanner as a remote control. Point to the screen and use the button to select your next step or rotate the 3D model. There's no longer the need to touch (and clean) the mouse.

INNOVATIONS INCLUDE:

- ✦ 30% smaller and 20% lighter compared to TRIOS 4. Made to fit perfectly in your hand
- ✦ Introducing ScanAssist, providing you with easier scanning independent of scan strategy
- ✦ Improved battery technology, requiring only one battery per day
- ✦ Truly effortless: calibration free scanner
- ✦ LED ring and haptic feedback for better user guidance
- ✦ Two-button design for improved software navigation and scan analysis
- ✦ Autoclavable scan tips providing a microbial barrier on the scan tip
- ✦ Body sleeves to significantly reduce risk of cross contamination.
- ✦ Closed tip design to avoid cross contamination
- ✦ Scanner body has been designed for cleaning and disinfection



Sealed Scratch Free Sapphire Glass



Autoclavable Tip

3shape

**UNICORN
DenMart**
Behind The Best Indian Dentists

TRIOS® 3



invisalign®
COMPATIBLE

Proven. The Trusted Choice.

Proven scanning technology for a superior patient experience
Now without the need of a power adaptor, fewer cables, Simplified Scans

Choose award-winning TRIOS 3 for accurate, scan-and-send impressions. Just like tens of thousands of dentists use – and love – TRIOS 3. With 3D scans in realistic colors, three included engagement apps, and an improved pod that is lighter, smaller, and with fewer cables.

Inspire your patients: This dental scanner comes with free engagement apps. There are so many new ways to engage with your patients, add weight to your treatment proposals and gain – even better – case acceptance.

Simplified pod: 30% lighter. 10% smaller. Fewer cables.: The improved TRIOS 3 pod takes up less of your precious workspace. It has fewer cables, for a lot less fuss. And the LED indicator light lets you know when it's connected and ready to go!



TRIOS[®] Move+



Excite Your Patients & Advance Case Acceptance

TRIOS[®] Move+

TRIOS MOVE+ is a new larger TRIOS monitor. The workspace is 36% bigger than TRIOS MOVE - 15.6" vs. 13.3"- and it comes with a USB port at the back of the screen.

TRIOS[®] 3 Scanner

Compatible with TRIOS[®] 3 Color & TRIOS[®] 3 Wireless in both, Pen & Handle Grip.

Software

TRIOS[®] Digital Impression software with integrated 3Shape Communicate[™] interface.

- ✦ Weight: 14 kgs
- ✦ Display: 15.6" (16:9) touch*
- ✦ Resolution: 1920 x 1080
- ✦ Processor: Intel i7 Quad core
- ✦ Disk storage: 1 TB SSD

The 3Shape TRIOS MOVE+ is the ultimate communication tool taking active patient involvement to the next level.

Flexibility

TRIOS MOVE+ features an ergonomic, 15.6" movable HD touchscreen* with USB port that allows you to easily share your digital scans, images, and treatment plan with patients. This helps patients picture their final results and ultimately, advance case acceptance.

Performance

TRIOS MOVE+ also features a powerful, custom PC specifically designed for use with all 3Shape TRIOS scanners to give a fast and smooth scan experience straight out of the box.

Excitement Apps

TRIOS Smile Design:

Design a smile in just minutes & share the photo-realistic images with your patients.



TRIOS Treatment Simulator:

TRIOS Treatment Simulator automatically generates a simulated result of the orthodontic treatment, side-by-side with their current dentition. This can be used to help facilitate patient engagement to increase treatment acceptance rates. You can also adjust individual teeth to create the perfect smile.



TRIOS Patient Specific Motion:

Your digital articulator using the patients own jaw movements to highlight occlusal contact points for a better fit.



TRIOS Patient Monitoring:

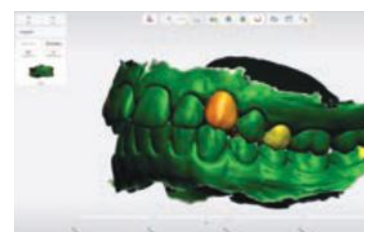
Use your TRIOS to monitor developments in your patients' dental status over time and to gain insight for preventive care.



Visit 2



Visit 3



Difference Map

Digital Orthodontics

3Shape Clear Aligner Studio

Clear Aligner Studio is the fast and easy way to bring clear aligner into your lab's production workflow. Clear Aligner Studio's guided workflow takes you through the process and steps you need to complete clear aligner cases.



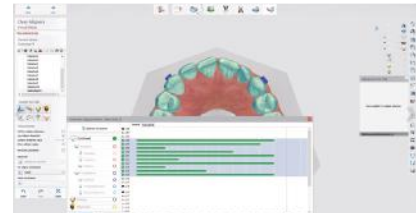
One integrated workflow

Quickly scan, design and prepare files for production using one integrated workflow.



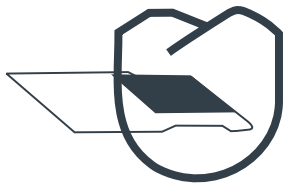
Increased efficiency

Save time & increase efficiency with new automated features: ID tagging, attachment placing and more.

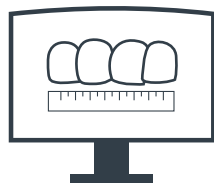


Full treatment control

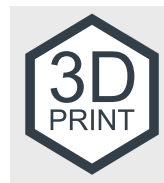
Get more control over tooth movements and improved visualization with enhanced setup and staging.



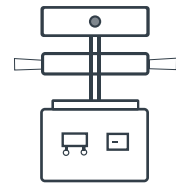
Scan



Design



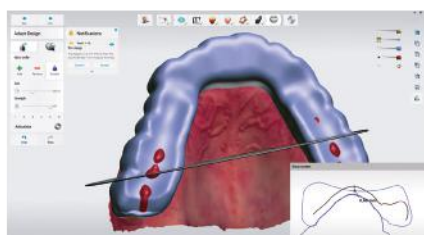
3D Print



Vacuum Pressing

3Shape Splint Studio

3Shape brings you a completely new splint design software that enable you to easily design splints, Night Guards and Protectors with just a few clicks. Efficient digital design and manufacturing of splints gives you lab an attractive opportunity to add a new offering with high profitability.



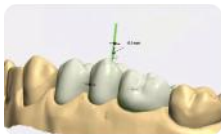
Digital Implantology

Implant Studio™ - Surgical Guides at Lower Cost

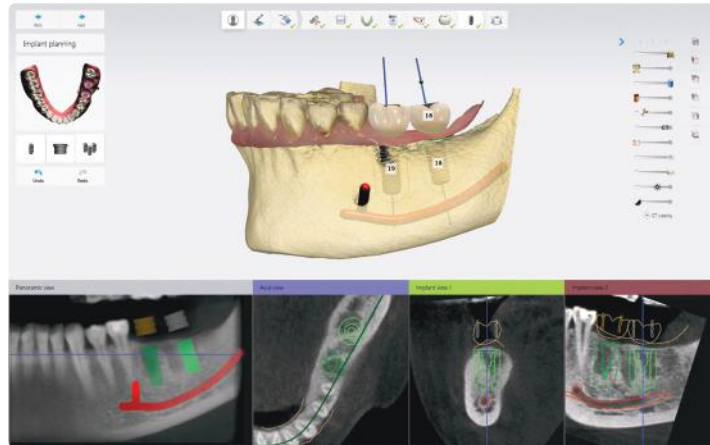
Surface Scan & CBCT Scan



Prosthetic Setup



Implant Planning



Guided Surgery



Provisional & final restoration

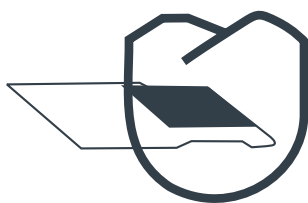


Design and produce guide



Trios Design Studio

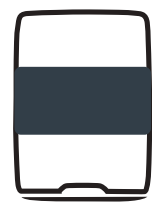
Chair Side Dentistry



Scan



Design



Produce

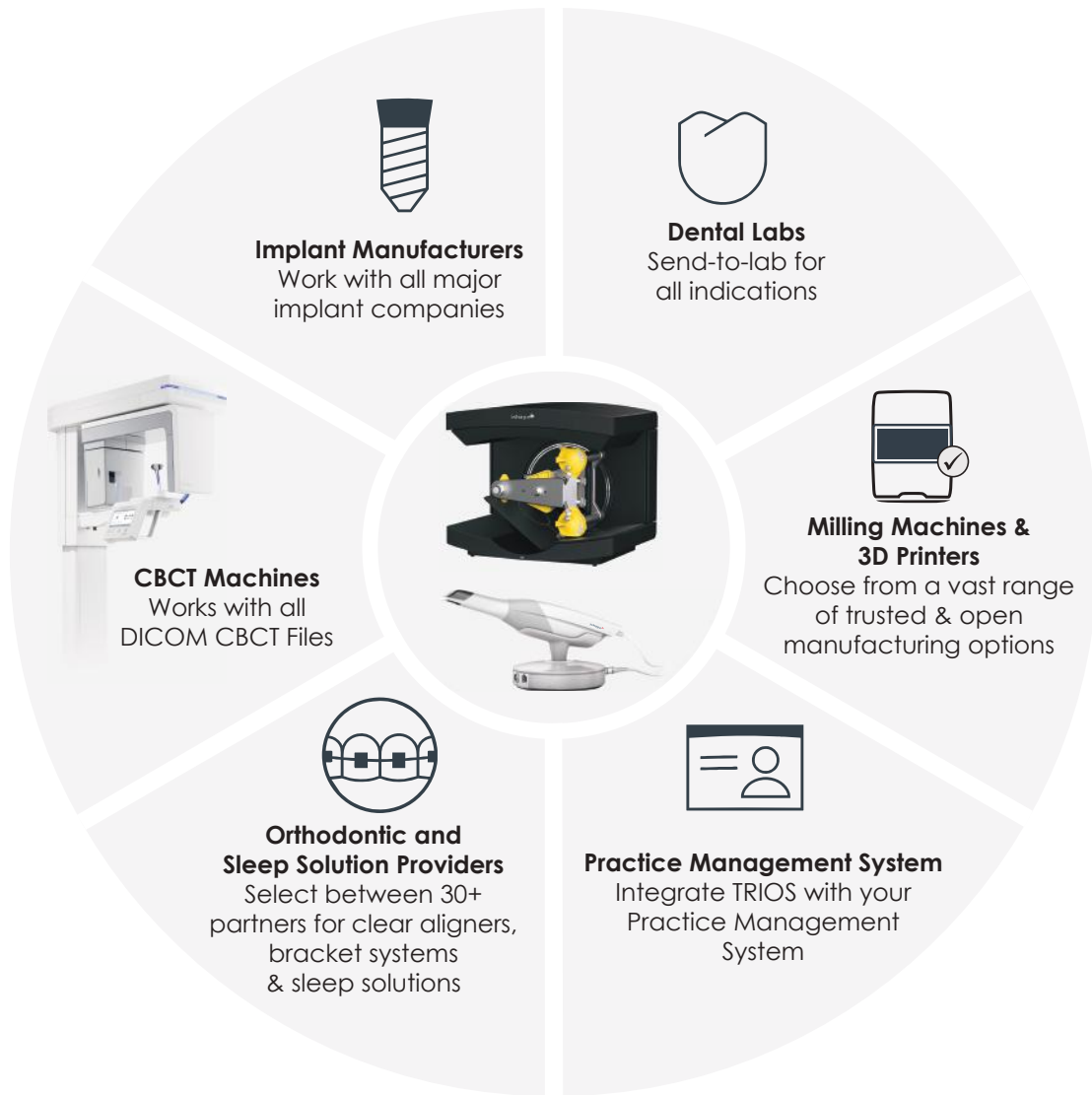
TRIOS Design Studio enables professionals to design and mill crowns, inlay/onlay, veneers and 3-unit bridges in the clinic in a simple and integrated workflow.

A range of 3rd party Trusted Connection mills are integrated via a validated in-house workflow. STL Export option for both scan and CAD files included for connection to other mills.

Details



- ✦ Exclusively sold with new or existing TRIOS subscriptions
- ✦ Full Trios Design Studio CAD CAM software included
- ✦ TRIOS Scan Export (STL) included
- ✦ CAD export (STL restoration design file) option included
- ✦ Mill specific software license (CAM) may apply - contact reseller/mill manufacturer for information

Open Eco System



Which TRIOS scanner is right for you?

There's a 3Shape TRIOS for everyone. Whichever model you choose, you benefit from industry-leading scanning experiences, and unparalleled clinic-to-lab workflows.

	<p>TRIOS 5 Wireless Intelligent. The ultimate TRIOS. Next-level ergonomics. Effortless scan technology. Hygienic by design.</p>	<p>TRIOS 3 Proven. The Trusted Choice. Proven scanning technology for a superior patient experience. Now without the need of a power adaptor, fewer cables, Simplified Scans</p>
		
Proven clinical accuracy	✓	✓
Realistic color scans	✓	✓
Automatic scan clean up	✓	✓
Access to Unite ecosystem	✓	✓
Print-ready model design	✓	✓
Patient engagement apps	✓	✓
MOVE+ compatibility	✓	✓
Full-mobility wireless scanning	✓	
TRIOS Share capability	✓	
Preventative care with surface caries detection	✓	
Enhanced tip features	Calibration-free scanning. Option of TRIOS Ready Tip	
Smart battery charging	✓	
Energy-saving sleep mode	✓	
ScanAssist intelligent-alignment technology	✓	
Sensory feedback guides scanning	✓	
Hygienic design	Sleeve & TRIOS Ready Tip	

SHINING 3D DENTAL

AccuFab-L4K

High-Precision Resin 3D Printer

A high-precision resin 3D printer that improves prototyping efficiency and shortens the new product development lifecycle.



HIGH
PRECISION



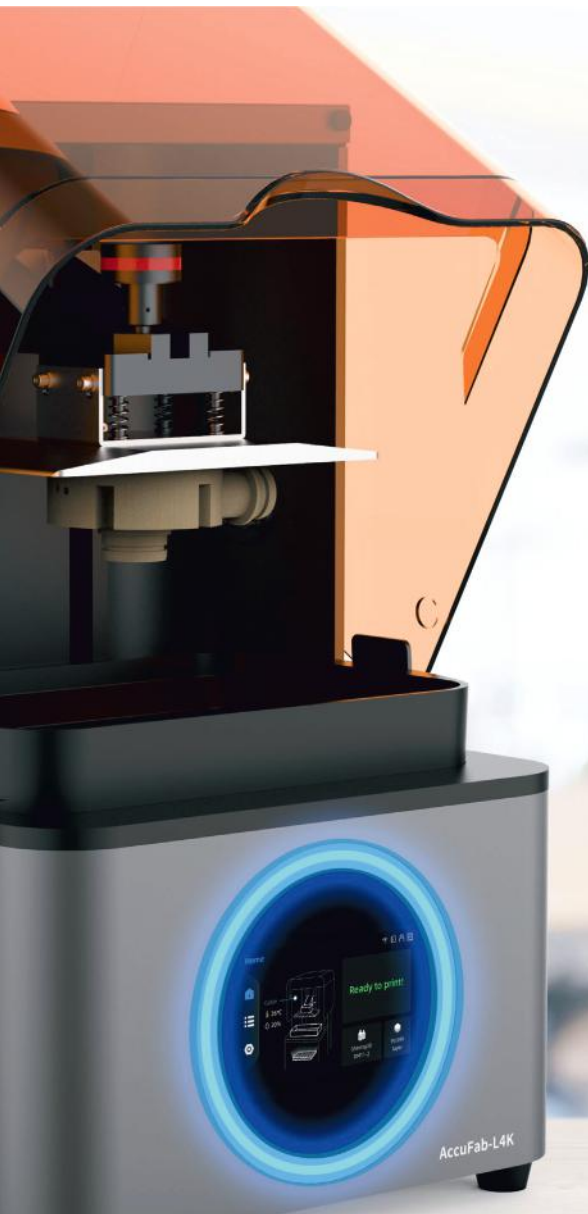
HIGH
RESOLUTION



HIGH
FIDELITY



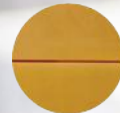
MULTIPLE
ENGINEERING
MATERIALS



IT7
Accuracy



IT8
Accuracy



IT9
Accuracy



Technical Parameters: AccuFab-L4K 3D Printer

Optical Spec	Resolution: 3840×2400
	Pixel Size: 0.05 mm
	Wavelength: 405 nm
	Light Intensity: 3 mw/cm ²
Print Spec	Light Source: UV LED + LCD
	Print Size: 192 mm×120 mm×180 mm
	Print Speed: 10~ 50 mm/h
	Tolerance: ±0.05 mm
Environment Spec	Layer Thickness: 0.025 / 0.05 / 0.075 / 0.1 mm
	Working Temperature: 20°C ~ 30°
	Working Humidity: 30% ~ 70%

Others	Connection: Wi-Fi/Ethernet/Thumbdrive
	Weight: 19 kg
	Printer Dimensions: 360 mm×360 mm×530 mm
Available Materials	SHINING 3D Engineering Material: White Material: TR01 S1; Yellow Material: Dm12; Transparent Material: SG01; Black Material: S2; Washable Material: W1
	BASF Engineering Material: Durable Material: ST45; ST80; Rigid Material: RG35; RG50; Flexible Material: Fl60; El150
	Third Party Certified Resin: Third party resin materials approved by SHINING 3D, also can be used in AccuFab-L4K High-Precision Resin 3D Printer

The Max 2.

Built to outperform.

Small in size, big on features.

Tried and tested, the Max 2 delivers consistency in the most demanding production environments.

- ✦ **Globally proven layer formation technologies:** Every single layer formed under a closely monitored process delivering exceptional consistency and performance.
- ✦ **Active Layer Monitoring:** Asiga's pioneering Smart Positioning System (SPS™) achieves precise layer thickness control of each and every layer, ensuring optimal print accuracy and speed.
- ✦ **DLP Micromirror Technology:** Achieve the highest standard of reliability with the broadest wavelength capability of any imaging technology.
- ✦ **Auto-Calibrating UV LED:** Combining the latest generation of high-power ultraviolet solid-state light sources with an integrated radiometer ensures years of consistent printing performance. 385nm LED as standard.
- ✦ **A simple user interface:** Navigate to your next build easily and then follow the prompts. The UI on the Max 2 will walk you through the process of starting the printer with simple messaging & clear infographics.
- ✦ **Transparent Mode™:** True water-clear resins can now be printed with extreme precision. Printing clear materials has never been this accurate.
- ✦ **Chamber heating:** Take advantage of a chamber heating system to warm your temperature sensitive materials ready for printing. Also did you know, a little heat helps reduce material viscosity allowing you to print faster!
- ✦ **Material Freedom:** Over 500 materials available. Experience the widest choice of materials on the market with unlimited and unrestricted access to many industry-leading materials for a variety of applications. Future-proof your business and stay up-to-date with the latest validated 3D print materials thanks to Asiga's Open Material Architecture.



Accessories	MAX2
Build Size xyz	119 x 67 x 76mm
Pixel size	62µm
Technology	DLP imaging with Asiga's integrated SPS™ technology and auto-calibrating LED power sensor
LED Wavelength	385nm UV industrial grade LED
Material System	Unrestricted and unlimited access to more than 500 industry-leading materials
Smart User Features	Intuitive user interface, 60-second calibration, Rapid material change-over
Software	Asiga Composer software. Lifetime updates included
File inputs	STL, SLC, PLY, STM (Asiga Stomp file format)
Power requirements	100-240VAC / 500Watts
System sizing	260 x 385 x 370mm Weight 19Kg 10.2 x x 15.2 x 14.5 inches Weight 42.6 Lbs



The Ultra

Predictable, reliable, smart.

Our most advanced 3D printer yet.

Unrivalled 3D print monitoring technologies
Engineered to deliver production continuity
in any environment.



reddot winner 2024



**GOOD
DESIGN
AWARD
WINNER**

Accessories	Ultra (32)	Ultra (50)
Build Volume X, Y, Z	119 x 67 x 130mm	189 x 106 x 130mm
Pixel Size	32µm	50µm
Technology	DLP	
Auto-calibrating UV LED	385nm (365nm and 405nm available on request)	
Material Compatibility	Use any one of over 500 qualified resins from the world's leading material manufacturers, or create your own.	
Software	Asiga Composer software. Lifetime updates included	
File Inputs	STL, SLC, PLY, STM (Asiga Stomp file format)	
Network Compatibility	Wifi, Wireless Direct, Ethernet	
Power Requirements	100-240VAC / 500Watts	
System Sizing	353 x 441 x 555mm Weight 32.5Kg 13.9 x 17.3 x 21.8 inches Weight 71.5 Lbs	

- ✦ **Active Layer Monitoring:** Asiga's pioneering Smart Positioning System (SPST™) achieves precise layer thickness control of each and every layer, ensuring optimal print accuracy and speed.
- ✦ **4K Imaging Resolution:** The latest high resolution imaging chipset delivers extraordinary resolution over a large build envelope.
- ✦ **Auto-Calibrating UV LED:** Combining the latest generation of high-power ultraviolet solid-state light sources with an integrated radiometer ensures years of consistent printing performance. 385nm LED as standard.
- ✦ **DLP Micromirror Technology:** Achieve the highest standard of reliability with the broadest wavelength capability of any imaging technology.
- ✦ **User features that actually make a difference:** No gimmicks. Functional, useful features to make your workflow easier.
- ✦ **Touchless Entry:** Interact with your 3D printer without contaminating surfaces or double handling. Give the Ultra a wave and watch the hood open effortlessly. Manual opening also possible!
- ✦ **Magnetic Platform Holder:** Streamline your workflow and be automation ready with the new magnetic build-platform holder. No latches, screws or calibration is necessary.
- ✦ **Infrared Material Heater:** Access a new generation of advanced materials with the infrared material heating system. Achieve temperatures up to 70°C.



SONIC MIGHTY 12K 3D PRINTER

Technical Parameters: Sonic Mighty 12K

Printing Volume	21.8 X 12.3 X 23.5
Printing Speed	Avg. 400 layers / hour
XY Resolution	19 X 24 μ m
Layer Thickness	0.01-0.30 mm
Light Source	Linear Projection LED Module
LCD Specification	10.1" 12K Mono LCD (11520 X 5120 Pixel)
Operation	5" Touchscreen Panel
Slicer Software	CHITUBOX VI 1.9.4 & above
Compatible File Format	CTB, PRZ

Connectivity	USB, Ethernet, Wi-Fi
Printer Size	33.7 X 33.7 X 51.6 cm
Printer Weight	14.3 kg
Power Requirement	DC 24V, 5A
System Power	120W
Rail System	Dual Linear Rails
Z-Axis Screw	Lead Screw
Release Film	nFEP Film

Sonic Mighty 12K 3D Printer

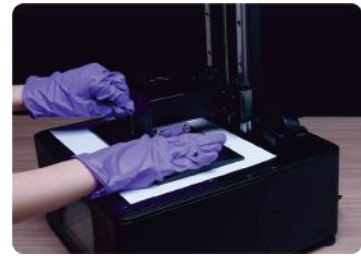
The Mighty You Love, Now in 12K



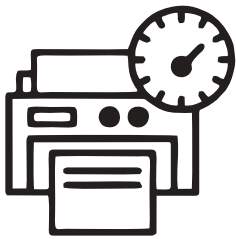
Reliable 12K
Printing Quality



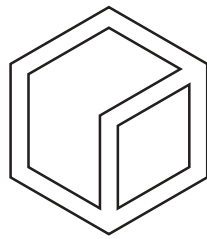
10" LCD for Bigger
Possibilities



Intuitive, User Friendly
Experience



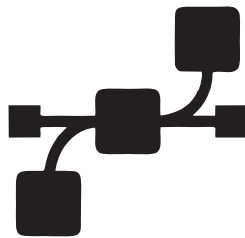
Fast Printing
Speed



Durable
Construction



Versatile Software
Compatibility



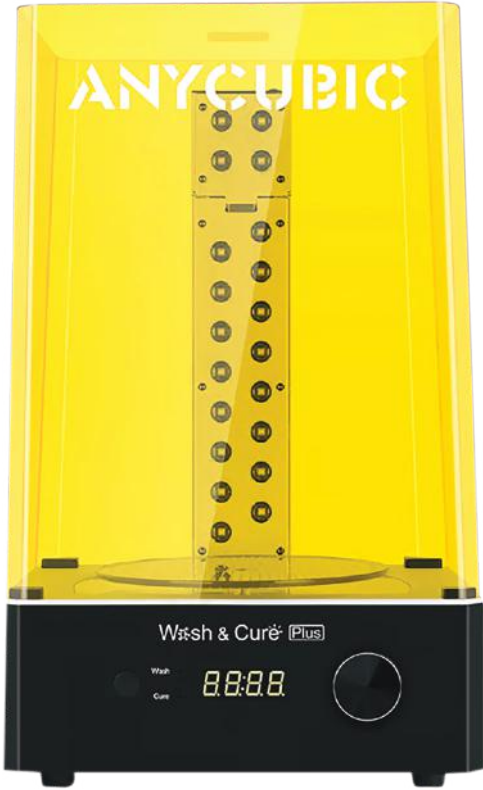
Multi-Connectivity
Options



Wash & Cure Plus-Dual Purpose

Inherit the features of previous generation and explore larger size and more powerful performance.

Wash & Cure Key Parameters	
Machine	Wash and Cure Plus
Control Method	Digital Tube, LED Indicator, Control Knob
Power	40W
Input Voltage	AC 110V/220V ±10%
UV Lights	405 nm
Machine Size	290mm(L)*270mm(W)*479mm(H)
Washing Size	192mm(L)*120mm(W)*290mm(H)
Curing Size	190mm(D)*245mm(H)
Weight	~6.5kg



360° Curing
Equipped with L-shape strip light & reflective mirror sticker



Upgraded UV Lamp Beads
Added with optical lens for even and thorough Curing



More Powerful Washing
Multiple washing methods for more flexible model cleaning



Stronger Cleaning Power
The super-large cleaning vortex allows the liquid to clean every part of the model



Safer To Use
Automatically pause when the cover is removed



Anti-UV light Cover
Blocks 99.95% 405nm wavelength UV light



Easier Mode Switching
1-60min time selections provide more choices for washing & curing



Enclosed Washing Bucket
The washing bucket can accommodate larger size models

Standard Resins

A Top Choice for Entry-Level Users

LIGHT BEIGE



GRAY



Classic Formula for Entry-Level Users

As the best-selling resin, standard resin delivers balanced performance in terms of printing success rate, stickiness with the print bed, model details, printing precision, hardness, resilience, smell, fluidity, and ease in cleaning.

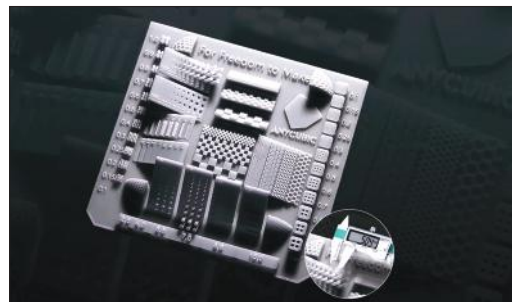


General Resin with Balanced Performance

Standard Resin can satisfy users' requirements regarding the material performance of general resin, as it delivers balanced performance in terms of stiffness, hardness, resilience, and details.

High Model Precision

Molding precision is within +0.2mm. Based on the energy uniformity of the equipment, the molding precision can be controlled within ± 0.1 mm, so as to deliver good details, characteristic details, and sound hole effect.



SHINING DENT 3D Printing Materials

DM12 Implant Model (Geller Model)

Dental Model DM12 is the ideal choice for printing separated models for crown and bridge application. DM12 optimizes model precision through its lower elasticity and higher flexural modulus compared to the previous DM11. The hardness and mechanical properties of the cured resin allows the DM12 to resist abrasion during seating and finishing for crown and bridge cases, ensuring a perfect fit every time. The yellow color offers maximum detection of margin lines and adjacent contours, and cleanup is easy thanks to the low viscosity of the resin.

Low viscosity, high stability



DM03 Implant Model (Grey)

Dental model DM03 is the ideal choice for printing implant models and separated models for C&B applications. This material has features including high toughness, high pressure resistance, etc. This allows the best experience when using for implant models. The hardness and mechanical properties of cured resin allows DM03 to resist abrasion and tearing force during seating and finishing implant cases, ensuring perfect cases every time. The grey colour allows the perfect performance in model details. DM03 is recommended to place at room temperature 23 ± 2 with humidity $< 70\%$

Accuracy of printed curing model:

Within 10 days >90% | Within 15 days >85%

SG01 Surgical Guide

Surgical Guide SG01 is a clear and biocompatible resin intended for printing dental surgical guides. It is certified by FDA as Class I medical instrument and meets ISO 10993 standards, making it ideal for customized, non-implantable use with body contact limited to 24 hours. SG01 is a rigid polymer with minimal flex, which allows it to maintain its form during dental surgeries.

Biocompatible, transparent



Compressor

Special Dry Air Compressor for CAD CAM Solutions



With Dry Membrane



- ✦ **Reduced Moisture Content:** Delivers air with minimal moisture, essential for accurate bonding and material setting in dental procedures.
- ✦ **Enhanced Equipment Longevity:** Prevents moisture-induced corrosion, protecting sensitive CAD/CAM equipment like milling machines and scanners.
- ✦ **Improved Accuracy and Quality:** Ensures consistent material properties and accurate fitting of dental restorations by eliminating moisture-related warping.
- ✦ **Reduced Risk of Contamination:** Lowers the likelihood of bacterial growth by minimizing moisture, crucial for maintaining a sterile dental environment.
- ✦ **Better Patient Experience:** Reduces spray and splatter during procedures, enhancing comfort, and ensures high-quality restorations for patient satisfaction.
- ✦ **Increased Efficiency:** Minimizes equipment malfunctions and material distortions due to moisture, streamlining dental procedures and saving time.

Specification	1 HP	3 HP	4 HP	5 HP
Power (kw)	1kw/1HP	2.25kw/3HP	3kw/4HP	3.3kw
Max flow (L/min)	152	410	547	621
0.5MPa Airflow (L/min)	78	211	281	324
Noise dB(A)	≤68	≤70	≤71	≤75
Tank (L)	40	70	100	150
Package Dimension (mm)	450×450×730	1030×640×880	1210×710×920	1480×630×1000
Gross Weight (kg)	31.5	91	127	158
Dryer	-	In-built	In-built	In-built



WHERE **TRUST** COMES **FIRST**



**Warranty Ke Saath Bhi
Warranty Ke Baad Bhi**

For any Sales & Support

 9821184441, 8448398852

 sales@unicorndenmart.com

Customer Care

Register Your Complaint with A Missed Call: **7065-558-558**

 011-45551250, 51, 55  9717012081, 95994 48518

 care@unicorndenmart.com | care1@unicorndenmart.com

Connect With



Unicorn DenMart



Corporate Office: 3 Local Shopping Centre, MOR Land, Near J Block DDA Market,
New Rajender Nagar, New Delhi – 110060



* Accessories shown may not be a part of standard equipment. Specifications are subject to change without notice.

Ver 5/2026