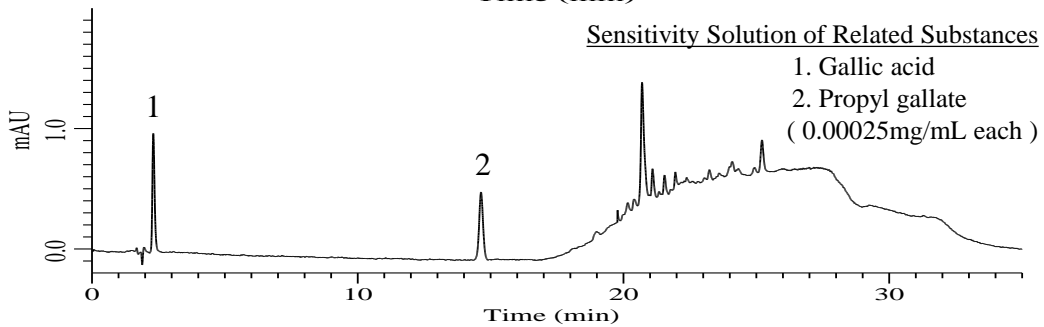
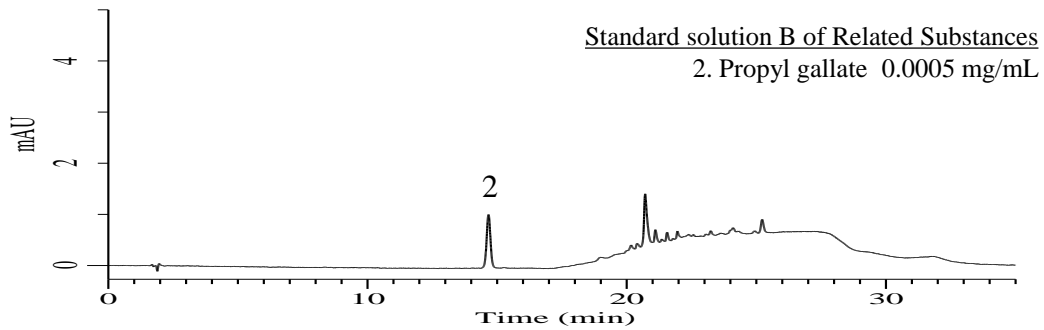
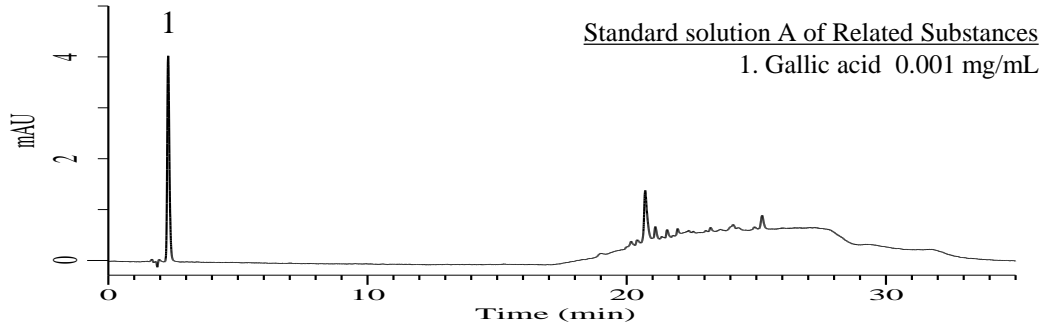


# Analysis of Propyl gallate

(Under the Condition of the draft for USP, Propyl Gallate)



**Conditions**

**System** : Chromaster HPLC system (HITACHI)  
**Column** : Inertsil WP300 C18 (GL Sciences Inc.)  
 (5 μ m, 150 x 4.6 mm I.D.)  
**Column Cat. No.** : 5020-05845  
**Eluent** : A) CH<sub>3</sub>CN/CH<sub>3</sub>OH = 50/50, v/v  
 B) 0.4 % HCOOH in H<sub>2</sub>O

**Flow Rate** : 1.2 mL/min  
**Col. Temp.** : 35 °C  
**Detection** : UV 272 nm  
**Injection Vol.** : 10 μ L  
**Sample** : Standard

Time (min)	A (vol %)	B (vol %)
0	10	90
14	30	70
20	95	5
25	95	5
29	10	90
35	10	90

Tailing factor : 1.03 (≦ 1.5)

RSD of the peak area (%) (n=6) : 0.08 (≦ 1.0)