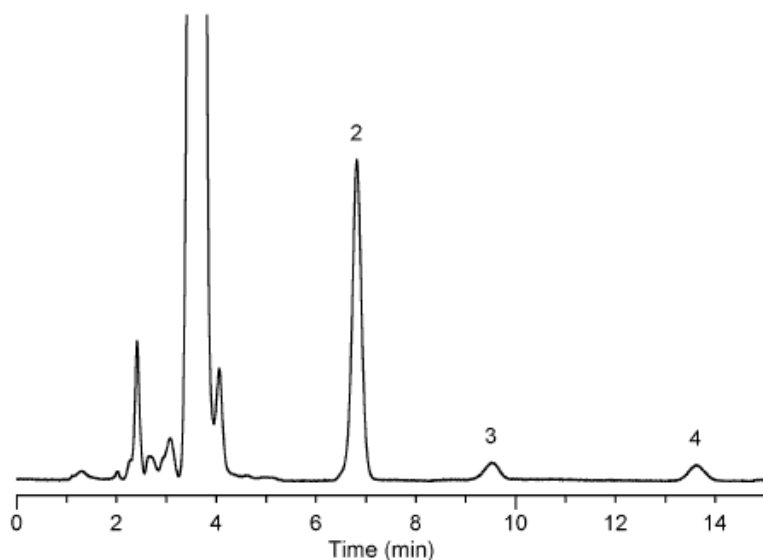


# InertSearch™ for LC

Inertsil® Applications

## Analysis of DNPH-Aldehydes

Data No. LA318-0000



No.	Peak Name	R.Time	Area
1	DNPH	3.653	6.92796e+06
2	DNPH-Formaldehyde	6.817	169342
3	DNPH-Acetaldehyde	9.510	15520
4	DNPH-Acetone	13.610	15075

Column : Inertsil ODS-3V  
5µm  
150 × 4.6 mmI.D.

Column Cat. No. : 5020-01801

Eluent : CH<sub>3</sub>CN / H<sub>2</sub>O = 50 / 50

Flow rate : 1.0 mL/min.

Col. Temp. : 40°C

Detection : UV 360 nm

Injection Vol. : 10µL

Sample : Formaldehyde in air at wood panel factory  
: formaldehyde (0.51ug/mL as Aldehyde in extracted sample)  
: acetaldehyde, acetone (blank of DNPH cartridge)

Solutes : 1. DNPH  
2. DNPH-Formaldehyde  
3. DNPH-Acetaldehyde  
4. DNPH-Acetone