

Concentration and Analysis of Flavor Components of Fabric Softeners - Using MonoTrap Simple Enrichment Tools

MonoTrap RGC18TD, a simple enrichment tool was used to screen and analyze the flavor components in fabric softeners. MonoTrap RGC18TD is a dedicated heat-desorption type MonoTrap, it is packaged individually in ampoules and does not require conditioning before use.

Preliminary processing procedure

Fabric softener

Place 10 mL in a 40 mL vial

Collection (HS)

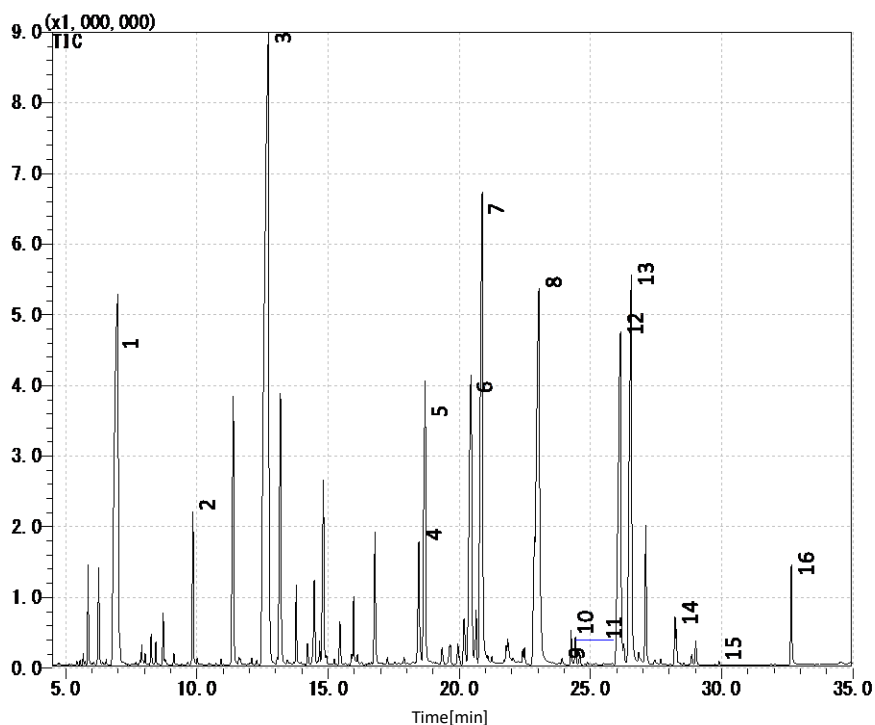
One MonoTrap RGC18TD

37 °C for 2 h

TD/GC/MS

GC Conditions

System	: GC - MS - Thermal Desorption
Column	: InertCap Pure-WAX 0.25 mm I.D. x 30 m, df = 0.25 μm
Col.Temp.	: 40 °C(3 min) - 6 °C/min - 250 °C
Carrier Gas	: He 1 mL/min (constant flow)
Desorb Temp.	: 200 °C
Time	: 5 min
Mode	: Split (Split ratio 5:1)
Cryo Trapping	: -150 °C
Injection Temp.	: 250 °C
Detection	: MS Scan (<i>m/z</i> : 29- 600)



- | | |
|----------------------------------|--|
| 1. Limonene | 9. 1-Isobutyl-4-(1-methyl-2-propenyl)benzene |
| 2. <i>cis</i> -3-Hexenyl Acetate | 10. γ -Decalactone |
| 3. 3,7-Dimethyl-3-octanol | 11. Ambrox |
| 4. Geraniol acetate | 12. Muskalactone |
| 5. Citronellol | 13. Methyl dihydrojasmonate |
| 6. Jasmacyclene | 14. 5-Cyclohexadecenone |
| 7. Phenethyl alcohol | 15. Vanillin |
| 8. Lilial | 16. Benzyl salicylate |

※According to library search results

Products

Absorbent

Description : MonoTrap RGC18TD
 Cat.No. : 1050-74201

* Shipped in ample tube.



MonoTrap RGC18TD



MonoTrap Trial Kit for TD

Contents	Cat.No.
<ul style="list-style-type: none"> ● MonoTrap TD 10 pcs (Select one from 3 types as below) MonoTrap RSC18 TD, RGC18 TD, RGPS TD ● Glass Tube 1 pc (Select a tube for OPTIC / LINE, or for T-Dex / ATD / TD-20) ● MT Holder 1 pc ● CLEAN PIN HOLE SEPTUM WITH VIAL 1 pc 	1050-07800

GC Capillary Columns

Description : InertCap Pure-WAX
 Size : 0.25 mm I.D. × 30 m, df = 0.25 μm
 Cat.No. : 1010-68142



InertCap Pure-WAX

GL Sciences disclaims any and all responsibility for any injury or damage which may be caused by this data directly or indirectly. We reserve the right to amend this information or data at any time and without any prior announcement.

GL Sciences, Inc. Japan

22-1 Nishishinjuku 6-Chome
 Shinjuku-ku, Tokyo,
 163-1130, Japan
 Phone: +81-3-5323-6620
 Fax: +81-3-5323-6621
 Email: world@glsciences.co.jp
 Web: www.glsciences.com

GL Sciences B.V.

De Sleutel 9
 5652 AS Eindhoven
 The Netherlands
 Phone: +31 (0)40 254 95 31
 Email: info@glsciences.eu
 Web: www.glsciences.eu

GL Sciences, Inc. USA

4733 Torrance Blvd. Suite 255
 Torrance, CA 90503
 Phone: 310-265-4424
 Fax: 310-265-4425
 Email: info@glsciencesinc.com
 Web: www.glsciencesinc.com

GL Sciences (ShangHai) Ltd.

Tower B, Room 2003,
 Far East International Plaza,
 NO,317 Xianxia Road,
 Changning District.
 Shanghai, China P.C. 200032
 Phone: +86 (0)21-6278-2272
 Email: contact@glsciences.com.cn
 Web: www.glsciences.com.cn

International Distributors

Visit our Website at www.glsciences.com/distributors