

moving the hobby forward

MidlandBus *Kits*



Magazine

MAY 2026

The Miniature Bus Modellers' NEWSLETTER 55

MOVING THE HOBBY FORWARD

MAY 2026

It's May, we have had some good warm days in April, so I wonder what May will bring us?.

I am slowly getting back to some sort of normality after my meniscus surgery, slow and steady they say, so it's nice to get back to work and back to commissions and kit building. I have a backlog to clear, but I will get there.

There is a lot of chat on social media of where our hobby is going, as regards 3D printing. What do you think? It would be nice to hear your thoughts and also What your preferred method of model production is. E mail me Daryl at midlandbuskits@outlook.com

I treated myself to something to cheer me up over Easter, what, I think I can hear you shout. Well I have put it in an article for you to read and I hope you find it interesting and helpful.

On other news, preparations are already going ahead for our event at the end of the year, it's not summer yet, so I won't mention the C word, but I think you all know what I am on about. The venue is booked and if you would like stall space, please get in touch midlandbuskits@outlook.com
I am hoping to have a new layout built ready for our next event. The layout will be based in Nottingham on a well know part.

Right I must crack on, this Newsletter won't produce itself. Enjoy. And so from the Friendly Bus Modellers. Daryl, Leon & David, ENJOY!

'ONE TEN BUS'

MODEL BUS KITS IN MINATURE



NEW Optare Excel L1150 KIT

New to the 1/110 model kit range, is the MKI Optare Excel L1150. It has a 3d printed resin body shell, interior and road wheels, and the glazing is Printed. This scale of kit is ideal for those with limited space for a full size layout.

Nottingham's Enviro 400 MMC City is also Available in our kit range along with other Modeller's favourites. Single deckers are £30, double £35 and Postage is £5



For more information, please visit our [website](#).



Also new to the 1/110 model kit range, and displayed for the first time at the Midland Bus Kits Show was the Duple Dominant bus and coach version & Volvo City bus.

Sunrise Models and Transfers



first version (single door, panoramic windows) of Sunrise Kit 74 of the Alexander AL-type body should become available within the next week or so along with Kit 51 of the earlier A/J-type. Alexander switched to alloy construction in 1972 and the AL appeared after that, with a slightly squarer appearance and different roof profile. The Kit 74 demonstrator represents Strathclyde's Buses LA1262 which was new to Strathclyde PTE in 1979



The second Kit 51 demonstrator just completed will surprise a lot of people.....it represents Glasgow Corporation Transport Leyland Atlantean LA2, and is finished in the corporation's traditional green, cream and orange livery which was phased out from 1959 onwards, when it was replaced by spray painted green and yellow with seven-inch cream band. We all know that the first GCT Atlantean, LA1, arrived in 1958 in the green, cream and orange and survived in these colours for a number of years. But there is evidence that LA2 was built in 1962, finished in green, cream and orange, and was inspected at Falkirk by corporation transport officials. Apparently it was the intention to run it in these colours in the last tram procession on 4th September, but for some reason that did not happen. It was repainted into green and yellow at Falkirk, to match others from LA3 onwards before it was delivered to Glasgow - some weeks after the others that had reached the city in time to replace the last tram route number 9 (Dalmuir West-Auchenshuggle) on 2nd September. So this demonstrator has been completed as it was at the coachworks, rather than how it entered service.

[Click here for Sunrise Catalogue](#)



N Gauge - N'TASTIC



New releases for February 2026 are 2 buses.
All new 1963-65 Bedford VAL / Duple Vega Major body (without roof quarter lights), other options may follow in years to come.

Alternative destination blinds option 1946-65 Bristol K Type High Roof (1/2 cab DD) - Triple Destination Boards

[VISIT OUR WEBSITE](#)



Iwans Bus Bits

'Another model fixed by Iwan's Bus Bits'

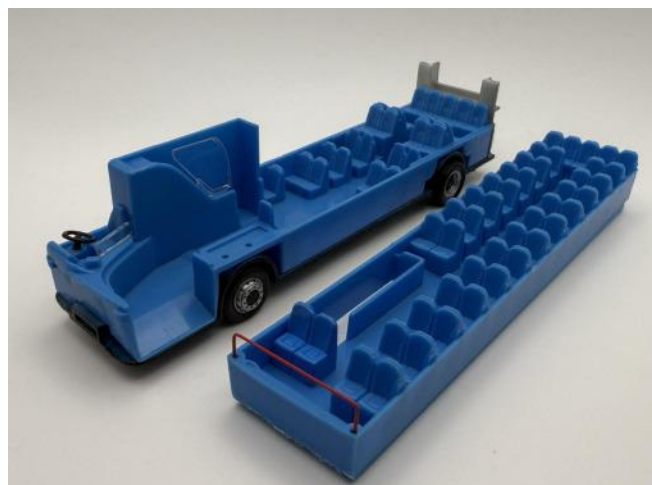
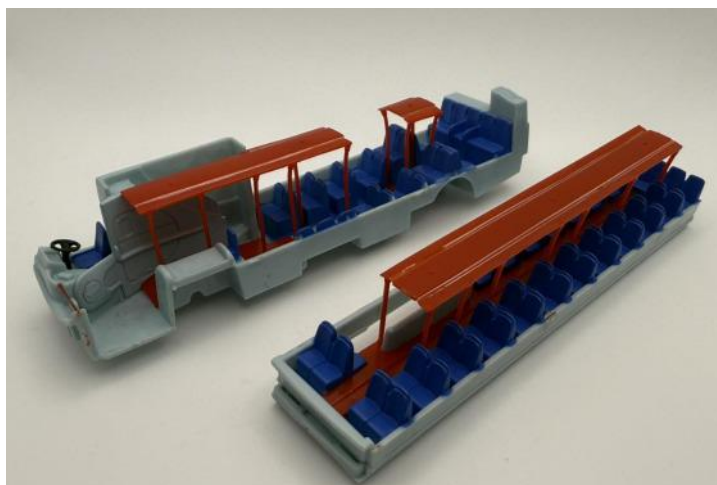


'Another model fixed by Iwan's Bus Bits'

Find us on Facebook



We have a wide range of spare parts for model buses and coaches, both brand new and second hand. Here is just a small selection. We have partnered with some of the best model bus producers to supply the very best parts to keep your model buses looking good as new. Visit my [website](#) [Facebook](#)



Iwan's Bus Bits was started in 2014 through the need of spare parts for my own model buses. After searching for a supplier I was able to purchase a large stock of Creative Master Northcord spares, which I was able to sell to other model bus collectors who needed to fix broken models.

Fast forward to 2021 where the opportunity came up to purchase more CMNL model bus spares. This time I wanted to sell other model bus spares too. Over the past 5 years we have added Britbus Omnidekka and Olympian spares joined the range, along with some Northcord Model Company spares too for the new Enviro 400 MMC along with the Enviro 400 classic and Scania OmniCity DD models. These have been some of the most popular parts.

Iwan's Bus Bits is always expanding its range and more recently I have added Model Buses Creations Enviro 200 and the Dublin Bus Enviro 500 model parts to the existing range. I also have a small range of Corgi and Hong Kong specific bus parts. I often buy collections of used spare for strip broken buses, these spares are always changing.

Iwan's Bus Bits celebrates 5 years this year, it's been an amazing journey and I would like to thank every single person who has purchased spares or who have sent an inquiry for spares. I am hoping the next 5 years IBB will continue to grow with more new spares and also develop new 3D printed spares as well. I would also like to thank Model Buses Creations who have supported and promoted IBB over the last 5 years.

Please keep following our Facebook page and see our full spares range on our website www.iwansbusbits.co.uk Thank you for your support. Iwan

In Every Detail- Mark Budd



EFE ECW Fleetline Conversion
Set of 12 opening windows
and cab slider, £4.75

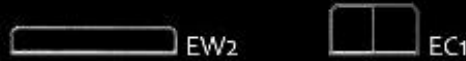
OOC MCW Metrobus Mk1/2 (Glasgow spec)
set of 10 opening windows, door and cab slider, £5.75



14mm Alexander sliders and hoppers for earlier Glasgow Atlanteans but fit many other buses including half cabs. Nearside and offside versions of sliders (6 of each) Set of 12, £3.50



Mk2 Metrobus front grilles. £2.50 Sold as a pair - choose different upper design



ECW Olympian - sold individually to make up required set
Single hopper, 35p Cab window, 90p



A range of exquisite 1:76 scale model bus parts etched in Nickel Silver, designed to enhance existing models or add some fine detail to your builds. These parts are produced in small numbers so some orders may take a little while to deliver or be placed on pre-order. Many of these parts are extremely fine and you will require some skill to work with them. Many thanks for taking the time to look.



RW1 Mirror Image / Sunrise Alexander R-Type Window openers Set of 10, £4. 12, £4.50



RW5 Cab windows, 90p



RC3 PC Alexander PS £1.10

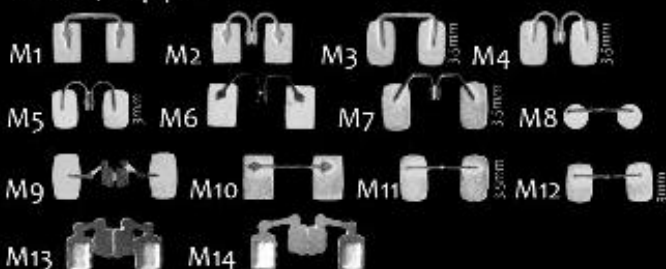


RG1 Early front grille, £1.75
RG2 Rear dome grille, 80p
RG3 80p/pair (Also suits AV Ailsa etc)
RG4 Large side intake, £1.75 Also suits late Atlantean



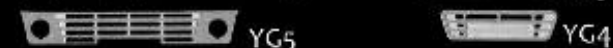
L1 L2 L3 L4 L5 L7 L8 L9 BMAC lights and signs
Paint the lenses with coloured varnish for realistic finish
Big rear lights, 80p / pair
Smaller lights, 40p / pair
PAYE sign/blank, 40p

Mirrors, 60p pair



EFE Alexander Y Type

Front grilles, £1
Later lower conversion, £1.30 (requires filing down the casting)



YG1 YG2 YG3 YG4 YG5 YG6 Side grille, 80p
Set of 6 window hoppers also fits Atlantean/Fleetline, £1.75
Full width 4-leaf door, £2

ABC Alexander Ailsa

Set of 11 SBC style opening windows and 2 cab sliders, £3.75
Pair of side grilles for Glasgow AV1-3, £1.75

EFE Alexander Atlantean Conversion

Set of 8 panoramic hoppers, £4
Set of 8 short panoramic sliders, £2 Also suits ABC Ailsa conversion



AG1 AG2 AG3 AG4 AG5 Grilles 80p



B1, 60p B2, 40p B3, 40p B4, 60p B5, 40p B7, 40p B8, 40p B9, 40p B11, 40p FG1, £1



T1, 80p F3, 20p F4, 50p F5, 50p

Straight wiper, 35p each Pantograph wipers, £1 / pair
fold the blade around behind the arm for cut and glide for SW effect.

W1, W2R, W2L, W3, W4, W5, W6, W7, F2, 80p, F1, 80p

Please contact Mark directly markbudd1276@gmail.com

MARK HUGHES MODELS

23 Orchard Rise, Tibberton, GLOUCESTER GL19 3AT hmark.hughes@gmail.com CATALOGUE

CITIBUS Models

CITIBUS Models

07788 106064
citibusmodelskits@outlook.com
www.citibusmodels.co.uk

Models to treat yourself with



We also stock your modelling bits and pieces

CITIBUS Models

www.facebook.com/citibusmodels

Terry Blois Bus Drawings

Scaled bus drawings for the modeller
 Terry Blois 4mm scale Bus and Coach Plans

For those who like to scratch build their own model buses, Terry Blois's website is a great addition to help with your model building. Each drawing is priced at £3.00 or 4 for £10 and postage is £2 per order. Payment options are cheque's you can use the ORDER CONTACT PAGE to get in touch with me to arrange a bank transfer or to pay via Paypal. www.terrybloisbusdrawings.co.uk



LITTLE BUS COMPANY

For all enquiries and pre-orders, please contact karl@little-bus.com Please send postal enquiries and kit orders to Little Bus Company 2 Brookside Cottages, Barlow, Dronfield, Derbyshire S18 7TB Tel. 01246 230468.

PARAGONKITS ETCHED DETAILING FRETS
 Stainless steel except where stated.

PD 01: 1980-81 set and others...
 PD 02: Full set...
 PD 03: Designed for CMC MCW...
 PD 04: For CMC set...
 PD 05: 2000-01 set...
 PD 06: Assorted red and black...
 PD 12: CMC set...
 PD 13: CMC set...
 PD 20: Detail set...
 PD 21: Detail set...

Just a reminder that most of the etched detailing sets are still available and can be very useful for both kits and scratchbuilds, regardless of what they were designed for. enquiries to: agoodwin206@mail.com please



Models Kits & Accessories in 1:76 scale
 A N Goodwin
 206 St James' Park Road
 NORTHAMPTON NN5 5EU
agoodwin206@mail.com
 FIND US ON FACEBOOK



LK 10

Picture courtesy Dick Lindsay



Kit LK 10, the ex Lancer Dennis Javelin Paramount 3, has been re-issued twice in 'normal' resin. After a few enquiries I have been persuaded to ask if there is any interest in another re-run. Let me know on: agoodwin206@mail.com please. Pictures of a built kit courtesy of Dick Lindsay..

T i N Y Bus & Coach Kits

T I N Y are pleased to announce the re-issue of kit TK53, the MK1 Seddon Midibus and the introduction of a new kit TK63, the MK2 version. The kits are £44 each plus £5 for up to three kits to UK postal addresses.

The pre-production samples of re-issued kit TK52B, the Bristol SC bus in upgraded CAD/3D form, replacing the obsolete multi part old fashioned white metal version, are due with the Ribble Marshall bodied Bristol RESL.

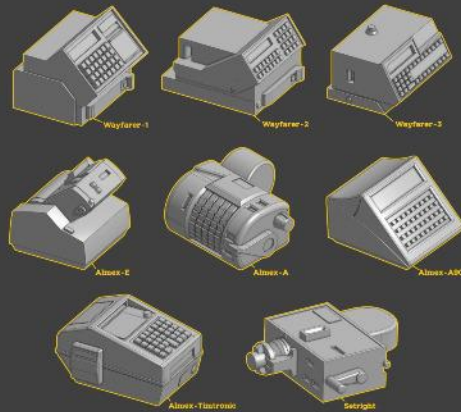
1 - TK53 Lothian 2 - TK53 Strathclyde 3 - TK53 Eastbourne 4 - TK53 South Yorkshire Transport ex Doncaster 5 - TK63



For more information, please email tinybuskits@gmail.com

Fitzpatrick

Model Works.



1, Almex A and Setright ticket machines. Ticket machines (pack of 5) - £2.00 plus, £1.50 p&p Fare vaults (pack of 5) - £3.50 plus £1.50 p&p

Engine cover upgrade for EFE Leyland Nationals. Detailed resin printed part including panel lines, slanted number plate recess and lamp. As shown in photo this is only the engine cover and the original EFE lights are retained. Priced - £2.00 plus £1.50 P&P please [CONTACT ME](#)

Scratch building services & kit sales



FOR A £25 NON-REFUNDABLE DEPOSIT AND FINAL PAYMENT ON COMPLETION, I AM OFFERING A SCRATCHBUILDING SERVICE. SO IF YOU HAVE A BUS OR COACH YOU WOULD LIKE ME TO SCRATCHBUILD FOR YOU, PLEASE GET IN TOUCH - paul.g13@outlook.com

New kit release details VAM/1 Bedford VAM Duple Viceroy C45F. Available July. E/1 Volvo B11R Plaxton Elite I C59Ft. Available August C/6b Volvo B11R Jonckheere JHV2 12.6m C53Ft = this kit is a completely new master. Available September. paul.g13@outlook.com www.psgmodels.com

ALSO POP OVER TO MY [WEBSITE](#) AND BROWSE ALL THE KITS FOR SALE AS WELL AS WATCH MY TUTORIAL VIDEOS AND SUBSCRIBE TO MY NEWSLETTER AND RECEIVE 10% OFF YOUR FIRST ORDER

Paul Gallier of PSG Models, has asked me to let everyone know, that at the end of this year, he will be retiring. He will still be offering his scratchbuilding services, But not producing kits.

Paul Ellender kits



For information, available for pre-order are kits NK18 and NK19. MCV / Volvo BZL single deckers. NK18 being the 10.8 metre and NK19 the 12.1 metre version. Enquiries to my e mail address only. pellender90@gmail.com. (Sorry, orders by Facebook not accepted). Thank you.



For information : my next kit is the 10.8 metre ADL E200MMC. The kit is single door but all kits will be provided with a centre door option for those wishing to change it. Moulded front and a new moulded rear screen provided. Cast in high quality cream resin with white metal wheels, printed glazing, etched brass wipers and etched brass mirrors. Cast camera mirrors included in the kit for those who want those. Free driver with every kit. Enquiries etc. to pellender90@gmail.com. (No orders by Facebook - thanks).

Saltire Buses & Model Bus Scotland



Volvo 9700 sample. Pre orders are now still available for the Volvo 9700 coach. Similar to flixbus and Park's of Hamilton style. Painted sample will follow soon.
Email saltire at saltirebuses@gmail.com



Yutong E10 and E12 Electric buses Pre orders are available.
Email saltirebuses@gmail.com

Another fourth coming kit will be the Volvo B9TL/Wright Eclipse Gemini
Pre orders are available.
Email saltirebuses@gmail.com



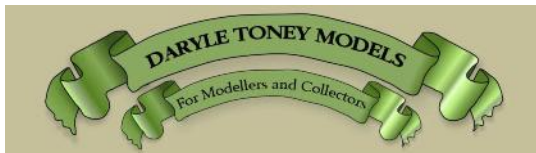
SG25, Leyland Olympian. Northern Counties Palatine Pre orders are still available for this kit Email saltirebuses@gmail.com



Volvo B11RT Plaxton Elite will be available shortly. I'm hoping to have samples to show early May, pre orders are still available
Email modelbusscotland@gmail.com



Welcome to Michael's Models, We've included a selection of buses / vans & lorries previously completed to demonstrate what can be achieved in such a small scale. You'll see working LED screen installs on buses alongside accurate representations of vehicles that use emergency beacons.
<https://www.michaelsmodels.co.uk/>



For more information and see their products, please visit their website at <https://www.johndaymodels.co.uk/> They also have a shop on [ebay](#)

Painting figures service

If anyone actually builds from kits or dismantles existing models for rebuild, you might like a driver in the cab. If so and need them painted to a specific uniform colour then please contact [Sue Matthews](#). Here are some of her available figures. They are all available as follows:- Male/Female with or with out caps, different driver positions and one in situ in a model in production. You'd be surprised at price as well. Great addition to your collection or a selling point!



Simply purchase from [Modelu](#)

And when you add to your basket, in the comments section add send to Sue Matthews then contact her with your requirements.

RayRimes Designs



Detailed Miniature Resin Models:
 Unique designs in 1/144, N gauge (1/152) &
 1/200 scales...
 ...and now 1/76 & 1/72 scale

[Shop Now](#)

N-Gauge 1980s Mercedes O-608D Bus (Alexander Conversion)



N-Gauge 1954 Strachan Bodied Trojan DT Bus £6.95 visit our [website](#)

our most interesting group of products has been the Coach and Bus models that started as simple bespoke orders, and grown into an interesting and curious range of models!

We also continue to design new vehicles and models for the range, the most recent being vintage caravans and a classic horse trailer among many others.



N-Gauge Bristol LH Based Recovery Vehicle £9.50



N-Gauge Bristol LHS Bus £9.50. Both model will compliment any 60s/70s/80s era layout, or even giving a retro feel to a modern day display.



E400 City and E400 EV announcement Model Buses Creations Tooling Announcement

Earlier in the year when we announcement our 2026 range, we teased a new tooling announcement and now the time has come to reveal what this tooling is.

We have been working hard with our production partner 80m in Hong Kong, factories in China, vehicle manufacturers and UK bus operators.

We thought long and hard about which would be the right vehicle to invest in, which was represented around the UK, which would also be popular with enthusiasts and collectors alike. In the end it was just too hard to choose just one vehicle to sit alongside our current Enviro 200 and Scania OmniCity DD tooling, so we chose two vehicles...

We have decided that the two new models joining the MBC range will be...

The Alexander Dennis Enviro 400 City BYD EV and the Alexander Dennis Enviro 400 EV (New generation)

These will be two brand new exclusive tooling sets which will allow us to develop a range of vehicles from around the UK including a London and provincial specifications. The tooling will also allow as many different variants as possible including staircase windows, roof skylights and different wheel bases.

Once again we have been working with some of the UK's biggest bus operators and we have listened to their feedback on a new model bus tooling.

Electric vehicles are now becoming common place on the streets of the UK and now most bus fleets contain at least one version of an electric bus.

We have also spoken to a large number of enthusiasts and collectors who are looking for more modern vehicles to add to collections and fleets.

We would like to thank Alexander Dennis for support with these projects, along with all the bus operators we are currently working with.

More details will be coming over the coming weeks and months but we wanted to leave you with something really exciting for the bank holiday weekend. Full announcement and detail including pricing and Pre Ordering [online here](#).

Please keep watching our social media for more news!

Our full product update on our E200 Long release, Corgi Superloop release and our Diplomat arrival date will be updated this weekend.

Many Thanks

Mark, Iwan and Alex







THREE PEAKS MODELS

AVAILABLE NOW



We are pleased to announce that our Oldham Leyland Atlantean are now available. We have both a one-door (H43/34F) and a two-door (H43/31D) version available.

Each unpainted model consists of a resin 3D printed body lower shell, upper shell, upper deck inside with seats, lower deck inside with seats, the four wheels. The steering wheel is part of the interior. The mirrors are modelled in place for N, but are separate for other scales.

This comes as an unpainted kit, with brass rod, precut windows and silver window bar stickers. The windows are fitted from the outside. The kit does not include transfers.

O (1:43), 1:50, OO (1:76) and N (1:148) models are available.



N(1:148) - £18, OO



O (1:43) - £95.



1:50 - £80.



OO (1:76) - £48



OO (1:76) - £48.

Postage is free on all orders over £50, and from £4.20 for orders under £50. visit our website please [CLICK HERE](#)



P & D Marsh Models



All our products are manufactured in our own workshop in the UK. Most are made from whitmetal (a tin/lead alloy). Our range has more than 750 models in N and OO including kits for you to make and paint yourself and a growing number that are hand painted and ready for immediate use. [WEBSITE](#)

RayRimes Designs



The D9 existed in Midland Red Livery as well as West Midlands Livery. They were used all over the Midlands and some are preserved. Others were converted to open top for London Transport sight seeing ones. If we find a decent drawing of the open top version we might ask the supplier to do that as well. The models will be produced as unpainted 3D models. Please visit our [website](#) for more info.

Quentin's
Minibus
Garage

Specialists on
TT scale bus

- New or used
- modified Code 3
- Order to made

Follow us on

Quentin's Minibus Garage

for latest release

T: 07311 899 517





kernow Bus Kits
1.76 Minibus Specialist



Kernow bus kits !! UP COMING KIT !!



We have an upcoming kit that of the very unique SWB Reeve Burgess Mercedes 609D (large service door) These were designed originally for hertz car rental group for the London airport links quite a few made their way north when decommissioning to Scotland & most went to Ireland with the likes of Ulsterbus & fFlexibus.

Price will be £30 + postage and come as a full kit in the normal cream resin with printed glazing wheels printed window screen and 3D printed mirrors etc if you would like to reserve one or more info , please drop me a email at kernowbuskit@gmail.com

JMH Engineering

New Product Announcement

BK-006 – Cardiff Bus Leyland Olympian



In the early 1980s, Cardiff ordered a number of Leyland Olympians alongside the order of Volvo / Ailsa buses produced by JMH Engineering as kit BK-002. There were three distinct batches, 501 – 510 delivered in 1981 and 1983, 511 – 519 delivered in 1984 and 551 – 567 delivered in 1985 & 1986. The first two batches were full height supplied with normal bus seats, and the third slightly lower to fit under a low bridge on one of the routes run by them, and with fancy coach-type seats.



All three variants are intended to be produced, starting with Batch 2, 511 – 519, the test model being shown here. As usual for our Cardiff kits, Cardiff Bus / City of Cardiff logo transfers and numbers will be provided, along with vinyl-printed destination blinds, numberplates and signage. In addition, as this bus has a flat windscreen we will be able to provide full glazing for the entire bus, leaving only paint being required to finish the model. We hope to release for sale towards the middle of May.





Latest Additions to our Range

76



Barton Bus Shelter



Bus Side Advert Boards

NEW Enviro 400EV advert board now available

76



Optare Wipers

Special offer for Midland Bus members

5% OFF all products

Code: MAY26

Valid until 31st May



www.3dprintingcorner.co.uk

info@3dprintingcorner.co.uk

UK based ~ Designed & produced in-house

OMNIDEKKA MODELS

PRE-ORDER - MMC6A - ENVIRO200 MMC - SWINDON'S BUS COMPANY



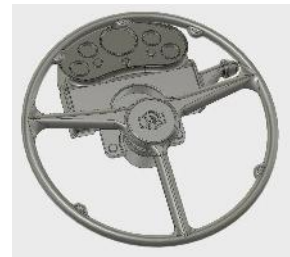
MMC6 - We are pleased to announce that pre-orders are now open for this model this is due around July all going to plan. Details for the model are
Route - 42 CALNE VIA AVEBURY, Bus - HJ74HKW, Amount made - 440 with only 400 in the UK, Price - £55 plus postage.

To place a pre-order please click on the picture to be taken to our [website](#), Chris & Luke Omnidekka Models

Optare Solo Arriva - Coming in 2027 is Arriva Midlands urban livery BU03HPY with routes
23 - MONKMOOR
26 - MEOLE VILLAGE
BLANK DESTINATION TO ADD YOU OWN ROUTES

We are working with Corgi to have the back camera added to the back of the model.
More details about pre-orders, prices and CAD designs will be announced when we have them later this year.

MMC200 8.9 - We have today been given permission to model YX75KWV(Or one of this batch). We will confirm details once they are finalised and will be a 2027 late release. Please see pictures of the bus [here](#)



Now in stock are our 3D printed AEC Steering wheel and Binnacle (£2 each) and Leyland Atlantean tach speedo with separate gear box (£3) and speedo with integrated (£2) Gears these will come with the axle style rod. Contact Daryl at midlandbuskits@outlook.com

Ken Jones – West Midland N Gauge Club

Malcolm Hall and I had a lot of interest in N gauge buses at the recent Midland Bus Kits exhibition. We had bespoke, scratch built buses and coaches there plus ones in own liveries to ones which were repainted commercial models. A number of people asked us about specific projects they wanted to do. So here is a project we are doing following the exhibition. It's not because I am interested in Midland Red more than other buses but EHA 413D - a D9 appeals to me as it carried adverts for Hall Green stadium, now closed, and I live in Hall Green.

History of the stadium can be found at https://en.wikipedia.org/wiki/Hall_Green_Stadium

So, finding history of the actual bus is the first thing to consider especially if your models are from a particular era. This applies to all models, not just N gauge. So luckily someone has already done this for us at <https://midlandred.net/vehicles/fleetlist.php?type=d9&operator=bmmo&find='eha413d'>

EHA 413D 1/1966–11/1976

New (1/66) to Birmingham & Midland Motor OC Ltd. (Midland "Red"), Birmingham as F/No 5413. To service (1/66) – SN. DH (7/72). AdBus: "Hall Green Stadium." (7/72). BD (10/73). DH (12/73). MN (1/76). store (2/10/76) – with the closure of Malvern depot. Withdrawn (11/76).

Passed to Sykes (dealer) (1/77) for scrap.

Are there any pictures of the bus you want to model and the best known one for this vehicle can be seen at <http://www.thebusrally.co.uk/vehicles/photograph/display.php?operator=bmmo&type=d9&fleet=5413&image=1>

Does anyone else have a picture of this bus in this livery? Well, that involves more research, contact bus museums and friends. Fortunately, Terry Jones © took these pictures when he was a teenager.

Now if you wanted to model this bus in OO scale one already exists if you can obtain it – details at <http://www.modelbuszone.co.uk/oo/dd/om456/om45604.htm>



So, 4000 were made and released in 2001 under the Corgi Original Omnibus range as their stock number OM45604. The green colour is darker than the green seen in photographs so without a colour reference number that is going to have to be a compromise.

Without pictures you would need to find a preserved vehicle to measure and several exist in the Midlands, but better still Ray Rimes Designs has recently released a D9 3D model in N gauge <https://rayrimesdesigns.com/shop/ols/products/midland-red-bmmo-d9/v/MBB-1-152> and we hope he is going to produce an open top version.

I've just managed to buy one of these OO models which will help us with transfers as there are dogs and text on the bus and they will need scaling down to N gauge. Interestingly Midland Red and the fleet number are in gold in the pictures and OO model as opposed to Midland on other D9 buses. Finally, can we link this project with others we want to do. Well Malcolm Hall is a much better painter than I am and we already plan to have Ray Rimes D9 models in Midland Red livery and West Midland livery so it makes sense that he should prime and paint this specific model before we ask another friend if he can do the transfers.

Rather than risking the post and potential loss or damage I will collect the models at the end of April from Malcolm and the model of 5413 along with the OO model should then go for transfers. If we add the time taken to produce the 3D model from initial design, any changes needed etc a project like this is a long time and is the reason many people buy commercially available models from companies like Oxford Diecast, but apart from Ray Rimes a D9 it is not commercially available in N gauge. If you did want to start from a non-commercial model you may need drawings and money for any development work which I did for Nigel Coward of Replitek when he produced a Bristol SUS for me.

John Finney - Buses after service life. 3

So this time it's big, little and intermediate sized buses enjoying their afterlife. Many bus companies in their infancy, particularly in rural district ran small fleets, a couple or so, of small buses, getting by on journeys from the outlying districts to the nearest town on market days along with a bit of private hire and a morning and evening bus to and from the nearest town for workers(or commuters as we call them nowadays).

As the entrepreneurs of the bus industry grew one of the ways they expanded, due to the constraints contained in the 1928 transport act, was to swallow up these smaller independent operators to get their licences and consolidate their monopoly in their area. In the process all sorts of unusual vehicles that they wouldn't normally even consider were acquired. Most had a short service life with the 'bigger boys' or were not used at all. During the expansion of my fictitious fleet a number 'Morris Commercial' buses were acquired this way, all dating from the 1930's

As the fleet expanded the ancillary fleet had to expand and some of the 'Morris's' were adapted for use on this fleet. One remained intact for use as a staff bus and 'run around', one was converted to a pick up vehicle, the final retained one becoming every bodies favourite vehicle, the 'tea wagon' which appeared at busier termini at pre set times to offer refreshments to the companies bus crews during their shift.

The intermediate sized bus started life as a coach but ended up in retirement with most of its seats removed to serve as a waiting room / shelter from inclement weather for the open topped buses garden tours. It lasted in this role long enough to make it in to preservation. Finally the big boys had heavy weights from Leyland and AEC., Guy, Crossley or Daimler amongst other. The Leyland, without its engine now somewhat lighter than it used to be and is still in use as the glaziers store room. The AEC was luckier, being one of the companies 'standard' Vehicles.

This former double decker had its Park Royal body converted in the companies workshops to a glazier's wagon offering specialist PSV glazing services, not only to the home fleet, but to other operators throughout the midlands. Sadly a service now discontinued.



The typical Morris Commercial bus beloved of some small local operators.



Mitts Commercial bus converted to pick up truck. Everybodies favourite vehicle, the 'tea wagon'



The glass store. AEC glaziers lorry, formerly a double deck bus.

Daryl Hemsell - Dabbling in 3D printing

With 3D printing quickly gaining ground in the modelling world, I thought I would show you what's out there online without, and you don't have to have Experience in CAD or design.

I have also been amazed by modeller's talents, wether it's in scratchbuilding or kit building. And it's taken me years to get to the level that I am now, but I am still learning and gaining experience.

Well. Over Easter and still feeling sorry for my self after knee surgery for a torn meniscus. I decided to take the plunge and buy a 3D Resin Printer. Now I have no experience in 3D printing nor CAD design. But I do have a few of my models that have been designed for 3D printing over the years.

I'm not thinking of mass printing models, I will leave that to the experts! But just printing them for my own layout.

So here we go.

I have no experience in CAD work, which is using lines to draw up detailed model, that's my explanation. I have seen loads of adverts on Facebook from influencers claiming that the 3D printed model they have was made from a photo being converted to a 3D image. Well I have a printer, but would it work or was it just a gimmick.

Onto Chatgpt I went.



can you please recreate the side of this vehicle as accurately as you can in 2d grey resin and transparent background removing the writing, also please remove the glass leaving open window frames



can you please remove the first 2 windows



...



can you please recreate the side of this vehicle as accurately as you can in 2d grey resin and transparent background removing the writing, also please remove the glass leaving open window frames



perfect can you make the side of the vehicle so it is straight facing please



🔗 🍌 🗨️ ...



can you please recreate this vehicle as accurately as you can in grey resin 2d with a transparent background and facing straight on

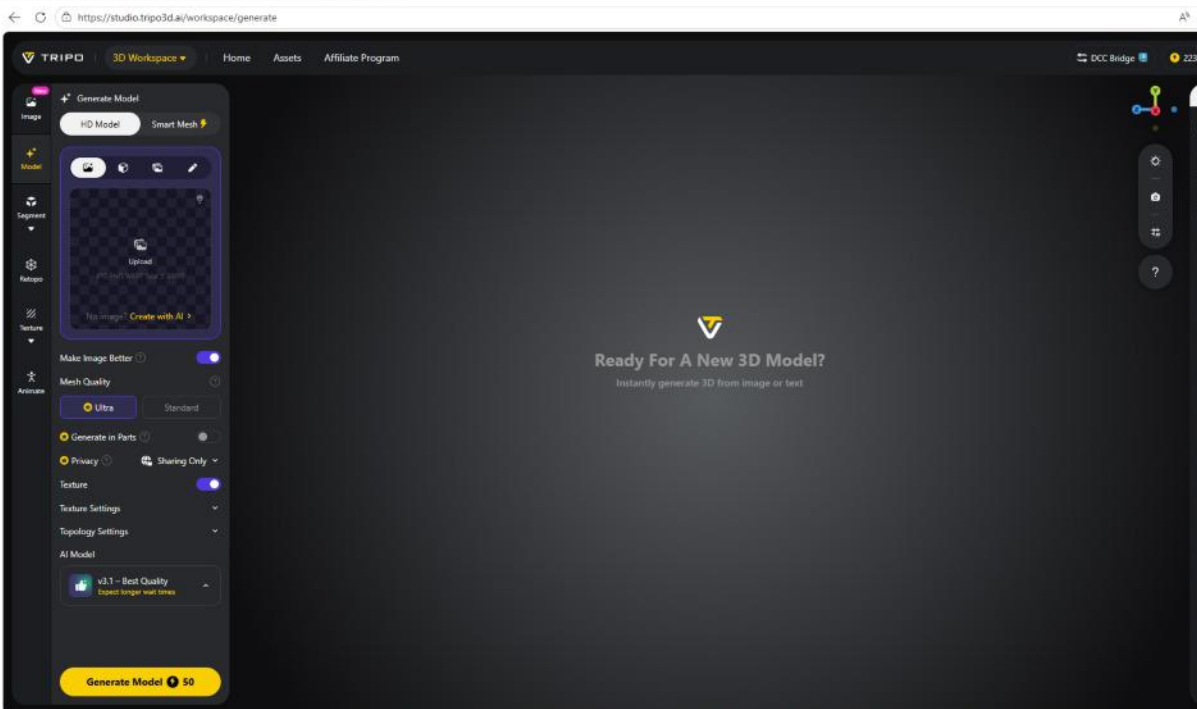


Please can you accurately recreate the front of this vehicle so it is straight on, in 2d and grey resin with a transparent background



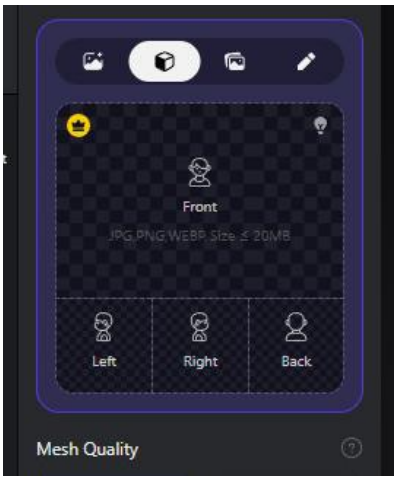
So that's the stages I went through to get the front, back and sides done. The next step was to make it into a 3D model

please can you remove the glass just leaving open window frames



This is the site I used, there are loads on the Internet if you search. This is a subscription based site which cost me £9 for the first month, rising to £19 a month if I decide to keep it running.

Top left you will see a box that says upload, there is a picture icon highlighted, click the one next to it which will let you upload 4 pictures.



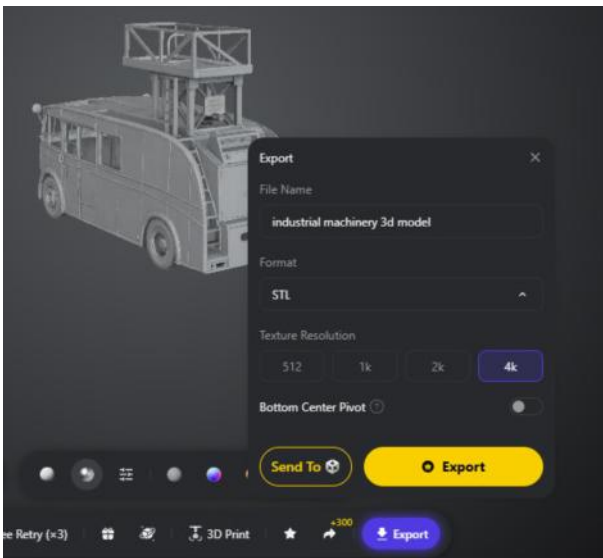
Click front, now this section I add the rear of the vehicle as I always added the front at the back?



Once all your images are uploaded, you can click the yellow Generate button



After about 4 minutes this is what you get. Now the eagle amongst you will have noticed the off side and near side wheel arches are in a slightly different position. That was my fault, I was so excited at what ChatGPT had done. I didn't check everything.



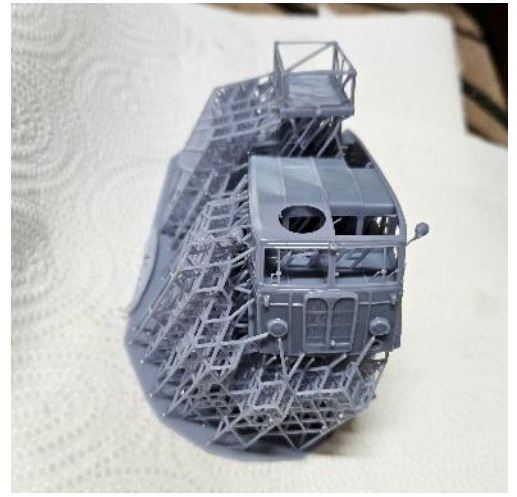
At this stage, you can either sent it off to someone who 3D prints or print it on your own 3D printer.

The next step is to export and save as an STL file



I filled the tank up with resin and pressed print





This is how the finished 3D print came out of the printer. Now I have never, ever, used a 3D printer in my life, so I am on a journey of discovery.



And this is the cured model. As I said, this is a journey for me, so I am learning. This was my first ever print. The white you can see is the dried residue of the resin, I didn't leave it in the wash machine long enough. And I also broke a bit of the back off when I was taking it out of its frame. Now you can see what a novice has achieved. I was surprised at just how very little resin it used.



The finished model. I am really pleased with it.

Daniel Mullins



Daniel purchased a set of Enviro 400 MMC 3d printed advert boards sold by 3d Printing corner, and this is what they look like on the model. You can Get these from 3D Printing Corner [HERE](#)

Richard's Bus & Coach Travel



Duple Metsec Trident 3 Axle

Richard's Bus & Coach Travel is a relatively newcomer to the model bus fleet operator's scene, based in Staines we started operations in 2024 using a motley collection of Leyland nationals these have gradually been replaced with newer low floor buses consisting 7 Volvo B7RLE's and 3 Scania Omnidiekkas, currently we only operate two routes, 46 Staines-Chertsey-Ottershaw-Woking and 41 Staines-Littleton-Shepperton-Walton on Thames-Kingston, we also operate two school services using four Leyland Lynxes.

Also available for private hire are the two newest members of the fleet, a pair of scratchbuilt Plaxton Leopard Volvo B8Rs SB19GKO & SB19GLY



Two of the scratchbuilt Plaxton Leopard Volvo B8Rs



In the depot yard are two Leyland Lynxs, two Wright Renowns a Duple Metsec Trident 3 Axle and a Leyland National Driver trainer.



Also in the depot yard are a Volvo B7RLE, MCV Evolution, Plaxton centro and an Omnidekka.

fleet list				
	volvo B7RLE		volvo B10L wright liberator	leyland lynx
plaxton centro			P125KSL R427XDA	D105NDW ,E889KYW,F67DDA G84EOG
FD57VYC BX59RJB				
wrightbus			volvo B8R plaxton leopard	scania omnidekka
YX10EYT BK10MFP			SB19GLY SB19MLY	YN05WFB, YN55NHE, YN54OHA
mcv evolution				
BX61AJD BF60RJL BF60MLY			volvo B9R plaxton elite	dennis trident duple metsec
volvo B8RLE MCV evora			SN60ENE SN60ENG	W388PRC
RJ26BUS (on order)				
	volvo olympian alexander royale		leyland national	
	N114UHP		training bus WBN478T & preserved EPD509V	

Ronald Childs



1936 London Transport Country, Greenline 7Q7 QA188 DGO500 ... a one off 27ft long double deck coach. Pirate white metal kit built and finished by me. (Q188) was an experimental Green Line coach, replacing its predecessor, LT 1137



Darren Critchley



This is my 4th and final Merseyside based National model. It's a pod less National 2 in Merseybus Maroon or Crimson & Cream, MPTE didn't take many National 2s without roof pods so this is quite an unusual vehicle, however it's sister 6036 is currently preserved. My model is of 6037 (UBG 37V) operating a No 3 to Haydock. Thanks to John Atwood again for the transfers and RRobert Hardy for another great model.

John Smith - Devon General AEC 111 Weymann



Devon General AEC 111 Weymann 3d test prototype print.

I am just finishing the last detailing of this model in CAD before it's final print , this is just a test print to see how this model is progressing. Further work for the radiator , bottom chassis buffer rails , and wheels which will be printed in super strong PETG black plastic . There are many other DG half cab models which I hope to finish them very soon .

Scottish Scale Model Transport

Hello! I am a 35 year old transport and scale modelling enthusiast, posting as "Scottish Scale Model Transport" My areas of interest are predominantly Tayside & Strathclyde, late 80's to present day. I enjoy scale modelling for the nostalgia, a lot of childhood experiences involved public transport and my Dad was a Bus Driver back then.

My collection is mostly focused on late 1980's to present day, Tayside, Glasgow & Lanarkshire. Between new releases, code 3 repaints and the world of kit models, I have a number of "fleets" I am very happy with. From bigger names like Stagecoach or First Glasgow, to Meffan of Kirriemuir or Fisher Tours). Kit and decal suppliers have made it possible for me to replicate real and preserved buses I could not have dreamed of as a kid. One great example would be the Midland Bus kit of the Yutong TCe12, enabling me to add relatively new, all electric, operator Ember to the collection.

I find scale modelling and photography of the models to be a great mindfulness activity. It allows me to switch off to the world and put all my focus on painting seats, or figures, adding glazing or applying decals. While motivation can come and go, these models and dioramas help stir up very pleasant memories of times and people now passed.



Pictures on the Prior Road depot diorama. Taken during the latest shoot to show my new T & TE Type kit models. Featuring; D278 FAS, Leyland Tiger Alexander TE Type. CRS 66T, Leyland Leopard Alexander T Type. 365 DXU, a Plaxton Paramount coach. Parked up is double decker YJU 694, an MCW Metrobus with Alexander RL bodywork



A110 UYS, KCB Network 2190 & B253 BY5, First Kelvin ST353

Sunrise Models & Transfers kit of an Alexander TE Type, completed as A110UYS - a Dennis Dorchester with TE body, heading for Shotts on the 56 service.

UYS was new to Central Scottish as their fleetnumber DO10 in April 1984. Notably the bus appears in the 1996 film "Trainspotting", as fictional "Robertson Line" on an overnight service to London. During the brief glimpse of her in daylight, arriving in London, her Kelvin/KCB Network fleetnumber of 2190 can be seen.

While the real bus had high back, coach seating, the toilet featured in the Trainspotting scenes was a prop added by KCB. Made of plyboard, covered with grey carpet. A television was also added behind the drivers bulkhead. - claim from an enthusiasts social media group, posted by a former Driver. Same source stated the actor, Robert "Bobby" Carlyle, passed his passenger carrying driving licence at Knightswood bus depot.

Finally, disposal for this bus was in charitable donation form. In FirstBus ownership, it appears UYS was either sent to Cuba, or to Kosovo. If the latter, it is likely she was painted to all white livery with branded decals playing on the company name - "FIRST Aid". If she ended up in Cuba, she likely went in the red First Glasgow livery, possibly still retaining some cream from KCB days.

2190 is pictured here, parked at the side of Traction House in Motherwell. Also pictured are a Duple Dominant in KCB Network livery, and B253 BY5, an Alexander cousin of 2190, being a TS Type bodied Leyland Tiger in First Kelvin all over red.



MidlandBusKit's MBK015 Ember Yutong TCe12 in 1:76 scale.



My Code 3, 1:76 scale Scania Irizar as Scottish Citylink Gold and 1:76, Scottish Citylink Gold, Plaxton Panorama



Stagecoach Strathtay (East Scotland), Forfar Prior Road, 1:76 scale

I had a new model join the collection, the Corgi Stagecoach Ribble, Merc Plaxton Beaver - R672LFV (OM43401) in "beach ball" livery. As much as it annoyed (and continues to annoy) me to see Stagecoach wipe out Strathtay, I might as well use my Forfar Prior Road diorama to display the new model - set shortly after the takeover.



First Glasgow, Belshotmuir Depot, 1:76 scale.

Creative Master Northcord (CMNL) 1:76 scale (OO Gauge) representations of two First Glasgow, Alexander Dennis (ADL) Enviro400 MMC double decker buses; SK68 LWN, fleetnumber 33201HB in route 75 branding. SK19 EOD, fleetnumber 33393 in route 77 branding.



Code 1 Corgi OOC Diecast. First in Glasgow bus 69102, SF06GZM - a Volvo B7RLE Wright Bus Urban Eclipse. First Bus UK "Barbie" corporate livery. "62 Ballieston via City Centre". Code 3 Creative Master Northcord (CMNL). Mercedes Benz Citaro. McGills of Greenock. Blue and White livery with gold trim. Waterslide transfers by Sunrise Models and Transfers. "Sorry folks, Ah'm no in service".



Strathtay models which have recently undergone minor changes



Tayside Public Transport, Leyland Olympian, 1:76 scale diecast model.

This is a "what if" Code 3 model. It is a Leyland Olympian in 1:76 scale, originally in Preston Bus livery which is a very close match to Tayside Public Transport. Using Sunrise waterslide transfer sets, I have converted it to a Dundee model showing service 22 to Ninewells Hospital. It is pictured with an ex First Blue Bus Dennis Dart, also a close match livery wise. Both models were simple to adapt, requiring only nail polish remover to remove the original decals, and water and tweezers to apply the new transfers.



Y182BGB is a Volvo B10BLE with a Wright Renown body. It was new to Hutchison of Overtown in 2001 and passed to First Glasgow in 2007 when Hutchison closed down. Hutchison of Overtown, 1:76 scale, code 3 diecast models



A Mercedes Sprinter of the Vehicle Operator Services Agency (VOSA, now DVSA), Vehicle Examination Unit. Pictured in this layout at a vehicle checkpoint, on a joint Road Safety initiative with Tayside Police. Stagecoach Strathtay and Travel Dundee model buses are added for additional location clues.



My assembled fleet of McKindless of Newmains (Wishaw, North Lanarkshire) models. Mostly 1:76 scale diecast, with a mix of production, Code 3 and resin kit.



Meffan of Kirriemuir fleet in 1:76 scale. A small independent operator, bought by Strathtay and parent company Yorkshire Traction. I have completed my collection of this company using a Wallace Arnold, Plaxton Paramount. Decals removed and replaced with Meffan. I felt the WA base colour was a good match. Depicted at Prior Road depot in Forfar.