



**HOSPITALITY  
SOLUTIONS 2025**

## Our Company

Since more than a decade CUBES Asia provides professional coffee solutions for all market segments from Hotels to Coffee Chains and Offices. Our dedication to quality in equipment and service made us the market leader in Vietnam. We are the official importer and service partner of premium European brands manufactured in Italy, Germany, Holland and Switzerland.



## Our Mission

We are dedicated to ensure the highest quality in Espresso based drinks with the most reliable equipment. As a one-stop solution provider our products cover all preparation demands from Nespresso Capsule machines to the most advanced "Specialty coffee" equipment. Our dedicated well-trained service team ensures a long lifespan for all installations and if necessary original spare-parts.



## Leading Provider

We have been the leading provider of coffee machines in Vietnam since 2012. Our consultants will guide you to find the optimal solutions for each location. Our support processes are constantly improved to ensure customer satisfaction.



## Our Service



### **\*CONSULTING**

Our sales team is qualified and helpful. Our staff is officially trained by experts from international brands to provide you the best solutions and coffee experience.

### **\*PRODUCTS**

As the exclusive distributor of leading international manufacturers, we do not compromise on quality.

### **\*INSTALLATION**

Our trained technicians reliably install the even most complex machines.

### **\*TRAINING**

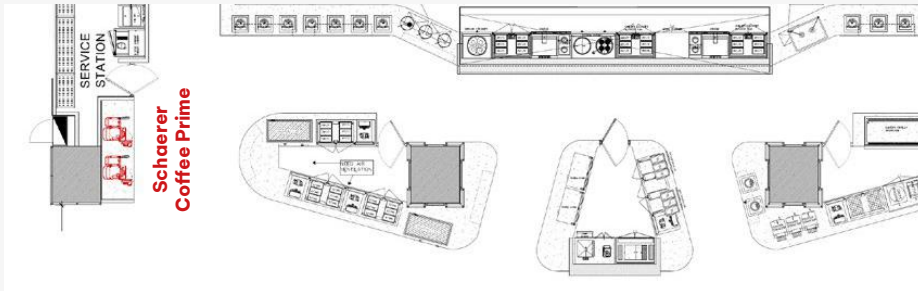
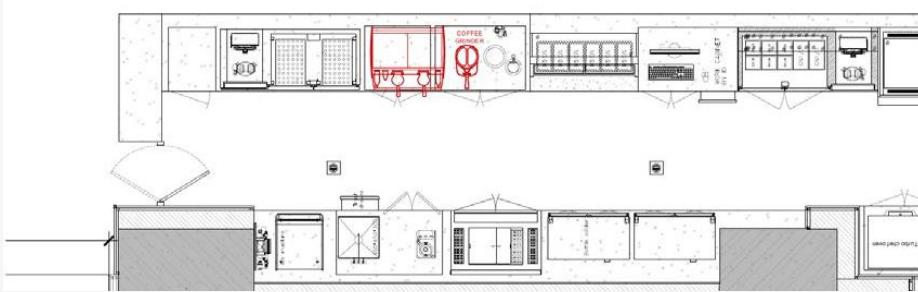
Our home barista and the Cubes-Lab provide world class training for all machines.

### **\*MAINTENANCE - WARRANTY**

With countrywide coverage of service centers, we guarantee fast and reliable service.

# Planning Support

We provide full planning support for your project. We help you choose the right equipment for each location, ensure the workflow is perfect and the integration with the interior design is harmonious. Our experts can also provide full layouts for your outlets if required.



# Our Clients

Our customers include some of the largest restaurants, hotels, and coffee chains in Vietnam, such as: Hilton, Park Hyatt, Intercontinental, Pullman, Novotel, Sol Beach, La Veranda, Equatorial, The Coffee House, Trung Nguyên Legend, La Viet, Heritage and many other customers we served around Vietnam.



Park Hyatt - Sai Gon



PARK HYATT®





# Hotel Solutions

Cubes Asia provides comprehensive coffee solutions for areas requiring international 5-star standards

**01** LOBBY LOUNGE CAFE

---

**02** SPECIALTY RESTAURANT

---

**03** PRE-FUNCTION AREA OF CONFERENCE / BALLROOM

---

**04** ALL DAY DINING / BUFFET

---

**05** ROOM SERVICE

---

**06** POOL BAR / BISTRO

---

**07** SUITES AND ROOMS

---

*Victoria Arduino*



## LOBBY LOUNGE CAFE

Solutions for the hotel lobby area showcase your guest appreciation. Dependant on your lobby cafe size a small to medium sized machine is suitable to serve espresso based drinks in style.

5-star Hotel

*Victoria Arduino*

### Victoria Arduino Eagle Tempo

Victoria Arduino Eagle Tempo 2 Groups is an energy-efficient espresso machine for cafés, hotels, and restaurants. Made of premium stainless steel and aluminum, it features advanced tech like NEO and T.E.R.S.

- Cast Aluminum Body
- TFT touch screen
- NEO temperature control
- Steam by Wire technology
- Steam boiler 8L & 2 Coffee boilers 0.14L



### Eureka Atom Excellence 65

The Eureka Atom Excellence is a premium grinder for large cafés and restaurants. With hardened steel burrs and a sleek aluminum body, it ensures durability, performance, and also an elegant design.

- Ultra solid body, stainless steel burr
- Touch screen with IPS technology
- Silent technology
- Stepless micrometric adjustment
- Burr 65mm - Bean Hopper 1.2kg







## Nuova Simonelli Appia Life Timer 2Gr



The Appia Life Timer crafted for bustling cafés and restaurants with a design made from durable materials like stainless steel & ABS. Key features include SIS with TFT display, DRYTEX THERMICAL technology.

- Stainless Steel & ABS Body
- TFT Display
- Soft Infusion System (SIS)
- DRYTEX THERMICAL technology insulation
- Boiler Capacity: 11L



## Eureka Helios 65



The Eureka Helios 65 is designed for professional baristas and high-volume coffee shops with a robust aluminum body. This grinder is equipped with advanced technologies like touchscreen, ACE System,...

- Ultra solid body, stainless steel burr
- Touch screen (3 doses + continuous)
- Total Control System
- Stepless micrometric adjustment
- Burr 65mm - Bean Hopper 1.2kg



## Nuova Simonelli Oscar Mood



The Nuova Simonelli Oscar Mood is designed for small commercial use with durable stainless steel and stylish finishes. Key features include PID system, Cool Touch steam wand, and silent pump.

- Stainless Steel & ABS Body
- Control console & display with timer
- Cool touch Steam wand
- PID Temperature Control Technology
- Boiler Capacity: 2L / Tank: 3L



## Nuova Simonelli Duo Grinder



The Nuova Simonelli DUO is crafted for small commercial use that built with durable stainless steel and premium finishes and key features include micrometric grind adjustments, and quiet operation...

- Aluminium body
- Intuitive touchscreen
- Microscopic fineness adjustment system
- Color palette similar to Oscar Mood
- Burr diameter: 55mm



## SPECIALTY RESTAURANT

The offer for a specialty restaurant can range from a machine for premium hand-crafted coffees to practical small automatic machines. This highly depends on menu offers and guest profiles.

### 5-star Hotel

**ECM**  
MANUFACTURE

### ECM Synchronika

The beautifully crafted ECM Synchronika is the top model of the range. With dual boiler technology it offers maximum control of extraction parameters. It is suitable for premium restaurants and bars.

- Stainless Steel Body
- Dual Boiler System with Rotary Pump
- Silver-coloured PID display
- Professional quick-steam and hot-water valves
- Coffee boiler: 0.75L / Steam boiler: 2L



### Eureka Mignon Turbo

The Eureka Mignon Turbo is designed for baristas and small coffee shops. The Mignon Turbo features a robust aluminum body combined with its Silent Technology, Espresso & Brew function, ACE system...

- Stainless Steel & ABS Body
- Touchscreen display
- ACE Anti-Clumping and Electrostatic System
- Silent Technology
- Burr 65mm - Bean Hopper 300g



4-star Hotel

**ECM**  
MANUFACTURE

## ECM Mechanika VI Slim

A slim powerhouse with heat exchanger system for powerful steaming without waiting time and 3 boiler temperature settings to choose from. Premium quiet vibration pump and generous stainless steel

- Stainless Steel Body
- Heat Exchanger System with Vibration Pump
- PID controller
- Three-position temperature control switch
- Water tank: 2.8L / Boiler: 1.9L



## Eureka Mignon Bravo

Eureka Mignon Bravo designed for discerning baristas. The Bravo blends elegance and functionality with aluminum body and key features like stepless micrometric adjustment, high-speed maintenance, ACE system.

- Stainless Steel & ABS Body
- Touchscreen display
- ACE Anti-Clumping and Electrostatic System
- Stepless micrometric adjustment
- Burr 50mm - Bean Hopper 300g



3-star Hotel



## Melitta Latte Select

Melitta Latte Select with its superior Aroma Extraction System, 12 coffee recipes and integrated tea function making it the top choice for unmatched quality reliability and ultimate convenience.

- Stainless Steel and ABS body
- TFT Color-Display / One touch operation
- Individual coffee enjoyment
- 12 coffee recipes, integrated tea function
- Productivity: 40-50 cups/day





## PRE-FUNCTION AREA OF CONFERENCE /BALLROOM

For your event area a hotel can rely on automatic machines  
or BOH brewed coffee served in coffee urns.  
The solution depends highly on the event space size.

5-star Hotel



### Melitta Professional XT6

*Melitta*  
PROFESSIONAL

This commercial fully automatic machine is in the premium level of the XT range of Melitta and features all key quality components plus extras. Up to 250 cups per day on average. Ready for fleet management.

- Refined aluminium body
- 8.4" touch screen display
- Milk system with milk pump
- Clean in Place (CIP®)
- Productivity: Up to 250 cups/day



## Animo CB 2x5

ANIMO

The Animo Combi Line 2x5L bulk brewers are the ideal solution for hotels, event venues, conference centers. It has robust construction and features: on-screen brewing process monitoring, optimal insulation...

- Stainless steel body
- Capacitive touch user interface
- On-screen brewing process
- Isolation optimal
- Capacity: 30L/ hour



## Kalerm K95LT Plus

KALERM

The Kalerm K95LT Plus features a sleek design with a 10.1" Android touchscreen, Fresh Milk System, 17+ beverage options, and a capacity of 150 cups/day, ideal for cafés, offices, and high-demand spaces.

- Stainless steel & ABS body
- 10.1" Android LCD touch screen
- Fresh Milk System
- More Than 17 Beverages
- Productivity: Up to 150 cups/day





## ALL DAY DINING / BUFFET

For a great breakfast experience it is important to ensure a high quality offer of espresso based drinks, especially Cappuccino and Cafe Latte prepared with fresh milk. Self serve automatic solutions are the trend, but also well brewed coffee could satisfy your guests.

5-star Hotel



### Melitta Professional XT6

Melitta<sup>®</sup>  
PROFESSIONAL

This commercial fully automatic machine is in the premium level of the XT range of Melitta and features all key quality components plus extras. Up to 250 cups per day on average. Ready for fleet management.

- Refined aluminium body
- 8.4" touch screen display
- Milk system with milk pump
- Clean in Place (CIP<sup>®</sup>)
- Productivity: Up to 250 cups/day



## Kalerm X460



The Kalerm X460 is designed for cafés, restaurants, and offices. With a 10.1-inch Android touch display, Multi-Scenario Mode operation, and an independent hot water wand for versatile drink preparation.

- Stainless steel & ABS body
- 10.1 inch Android touch display
- Independent hot water wand
- Consistent beverage quality
- Productivity: 100-150 cups/day



## Animo Excelso



The Animo Excelso 1.8L is designed for small to medium-sized spaces. It's a combination of stainless steel body and features like dry-boil protection, an included glass jug, and a simple control system.

- Stainless steel body
- Dry-boil protection
- 1.8L glass jug
- Easy to operate and clean
- Capacity: 18L/hour





## ROOM SERVICE

An easy to handle BOH automatic solution is important for the room service to ensure consistent quality 24/7 order after order.

5-star Hotel



### Melitta Professional CT4

Melitta<sup>®</sup>  
PROFESSIONAL

Melitta Professional CT4 with aluminum body 7" touch screen display, advanced milk system and Clean in Place technology offers productivity of up to 100 cups per day ideal for professional coffee service.

- Refined aluminium body
- 7" touch screen display
- Milk system with milk pump
- Clean in Place (CIP<sup>®</sup>)
- Productivity: Up to 100 cups/day





## Schaerer Coffee Club

**schaerer**  
swiss coffee competence

The Schaerer Coffee Club is an ideal solution for small to medium-sized spaces. It has a stainless steel & ABS body with features including the CleanIT, beverage customization, and SteamIT.

- Stainless steel and ABS body
- 7 inch wide TouchIT screen
- Easy cleaning design with CleanIT
- Beverage customisation
- Productivity: Up to 80 - 100 cups/day



## Kalerm K95LT Plus

**KALERM**

The Kalerm K95LT Plus features a sleek design with a 10.1" Android touchscreen, Fresh Milk System, 17+ beverage options, and a capacity of 150 cups/day, ideal for cafés, offices, and high-demand spaces

- Stainless steel & ABS body
- 10.1" Android LCD touch screen
- Fresh Milk System
- More Than 17 Beverages
- Productivity: Up to 150 cups/day





## POOL BAR / BISTRO

A sturdy solution is key for covered outdoor service. Smaller volumes require a space saving compact machine – for hand-made or automatic coffee production.

5-star Hotel



### Nuova Simonelli Appia Life 1gr

nuova  
**SIMONELLI**

The Nuova Simonelli Appia Life 1 Group, crafted for bustling cafés and restaurants with a design made from durable materials like stainless steel & ABS. Push & Pull steam wand, SIS, and DRYTEX THERMICAL tech.

- Stainless Steel & ABS Body
- Push & Pull steam Wand
- DRYTEX THERMICAL technology
- Soft Infusion System (SIS)
- Boiler Capacity: 5L



### Eureka Helios 65



The Eureka Helios 65 crafted for professional baristas and bustling coffee shops with an aluminum body. It is equipped with advanced technologies like touchscreen, ACE System, Stepless micrometric adjustment.

- Ultra solid body, stainless steel burr
- Touch screen (3 doses + continuous)
- Total Control System
- Stepless micrometric adjustment
- Burr 65mm – Bean Hopper 1.2kg

4-star Hotel



## Nuova Simonelli Oscar II

The Nuova Simonelli Oscar II is designed for small commercial use with durable stainless steel. Key features include Thermocompensated Group, Push&Pull steam wand, and heat exchange system.

- Stainless Steel & ABS Body
- Soft-touch backlit control panel
- Steam Wand: Push & Pull
- Heat exchanger system
- Boiler Capacity: 2L / Tank: 3L



## Eureka Mignon Bravo

Eureka Mignon Bravo is designed for discerning baristas. It blends elegance and functionality with aluminum body and key features like stepless micrometric adjustment, high-speed maintenance, and ACE system.

- Stainless Steel & ABS Body
- Touchscreen display
- ACE Anti-Clumping, Electrostatic System
- Stepless micrometric adjustment
- Burr 50mm - Bean Hopper 300g



3-star Hotel



## Melitta Solo & Milk

Melitta Solo & Milk offers a compact design, superior Aroma Extraction System, easy cleaning, making it ideal for offices and home users seeking a high-quality, user-friendly coffee machine.

- Stainless Steel and ABS body
- LED display
- Pannarello to prepare milk foam
- Conscious operation
- Productivity: 30-40 cups/day

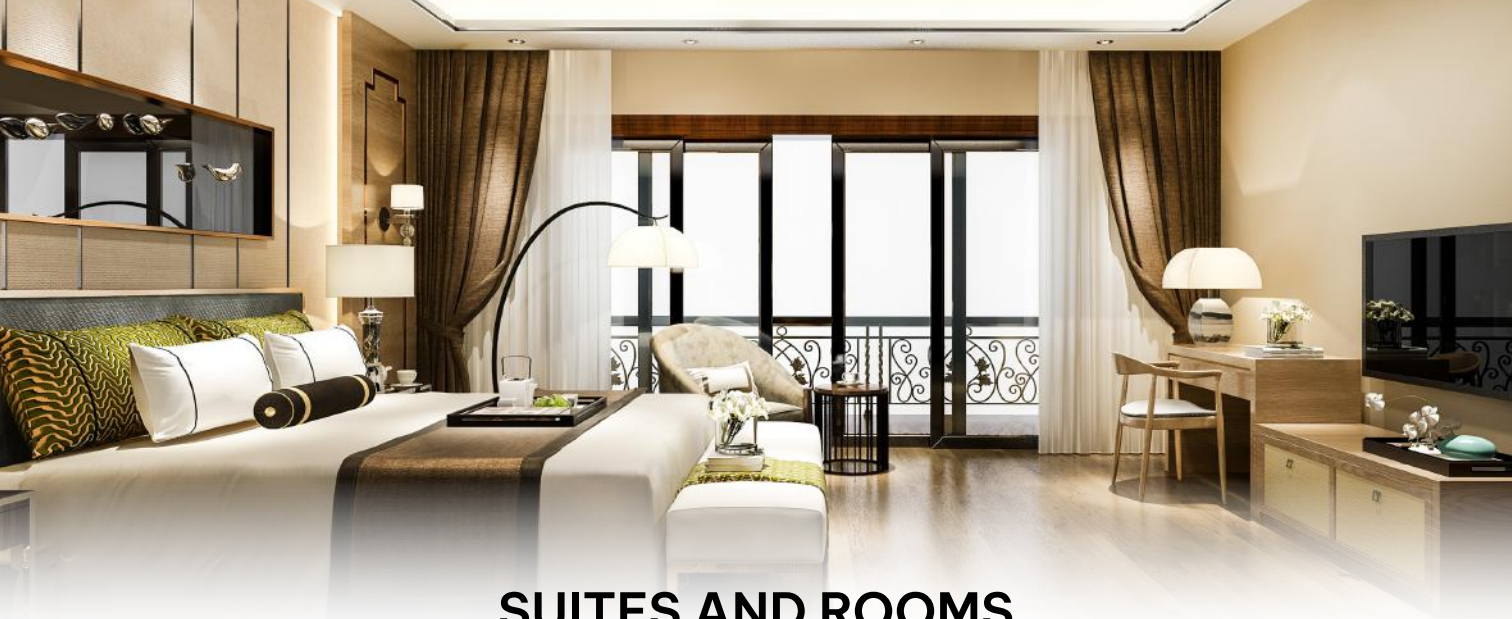


## Melitta Cremio

The Melitta Cremio II is designed with a stainless steel exterior, creating smooth and creamy milk foam for lattes, cappuccinos, and more. This product is often paired with Melitta automatic coffee machines.

- Perfect fine-pored frothed milk
- Hot and cold frothed milk
- Cooltouch housing
- Automatic switch-off





## SUITES AND ROOMS

Your guests expect an in-room coffee solution. This can vary from bean-to-cup machines for suites to practical capsule machines for the executive level rooms

5-star Hotel



### Melitta Latticia OT



Choose Melitta Latticia OT for its one-touch espresso, superior Aroma Extraction System, customizable coffee options, and compact design, making it the perfect choice for small spaces and practicality.

- Stainless Steel and ABS body
- LED Display / One touch operation
- LATTE perfection System
- Extra-large coffee enjoyment
- Productivity: 30-40 cups/day

## Scishare Nespresso Compatible

The Scishare Mini Capsule Coffee Machine boasts a 20-bar pump, rapid heating, and precise extraction system, delivering stable brewing and rich, smooth coffee flavor in a compact design.

- Compact design
- Rapid Heating Technology
- "Cup Memory" function
- Removable water tank: 0.62L
- Compression pressure: 20 bar



*Honduras*  
Floral &  
Chocolate Notes

*Ristretto*  
Strong & Intense

*Intenso*  
Harmonious  
& Balanced

*Rwanda*  
Citrus &  
Apple Notes

*Gran Crema*  
Rich & Creamy

*Ethiopia*  
Floral Notes Of Rose  
& Jasmine

*Dolci Arabica*  
Pure Arabica  
Flavor

*Brasile*  
Hazelnut Notes

*Decerato*  
Full-Bodied  
& Easy To Digest

*Vanilla*  
Rich Vanilla Flavor

*Decaffeinato*  
Easy To Drink  
With Very Low Caffeine

*Caramel*  
Rich Caramel Flavor

*Hazelnut*  
Mild Hazelnut Flavor

**NESPRESSO®\***  
**COMPATIBLE**  
by **CARRARO**



LOVE COFFEE

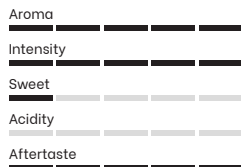


LOVE NATURE



### GLOBO MARRONE

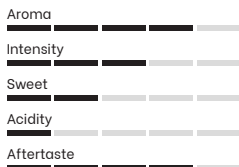
CREAMY  
SLOW ROASTING



85%  15%  
ROBUSTA ARABICA

### GLOBO ROSSO

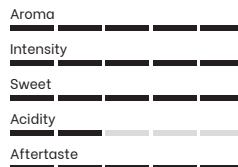
FULL BODY  
THICK RICH CREAM



70%  30%  
ROBUSTA ARABICA

### GLOBO ORO

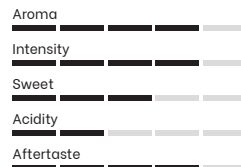
SWEET AND LIQUER-LIKE  
PLEASANTLY PERSISTENT



30%  70%  
ROBUSTA ARABICA

### BIO

STRONG ROASTED  
INTENSE AROMA



12%  88%  
ROBUSTA ARABICA

Cool down!







## Drink machine advance

The Vitamix Drink Machine Advance is ideal for busy cafés and restaurants. Built from ABS and includes features like 6 optimized programs, automatic shut-off, and a pulse function.

- ABS Synthetics Body
- Knob with 6 optimized programs
- Pulse Function
- Automatic shut-off
- Container capacity: 1.4L



## The Quiet One

The Vitamix The Quiet One is designed for cafés, bars, coffee shops, and restaurants. This blender combines high-quality materials with high-end features including 34 optimized settings, noise reduction...

- ABS Synthetics Body
- LCD display with 6 preset buttons
- Noise reduction
- 34 optimized settings
- Container capacity: 1.4L





**NUGGET**



**CRESCENT**



**CUBES**



**GOURMET**





## CUBELET ICE dispenser DCM-60KE 60k/1,9b

The Hoshizaki DCM-60KE ice maker, designed for restaurants, cafés, and hotels, combines sleek design with functionality, making it a reliable, efficient, and helper for customer satisfaction and service.

- Capacity: 60kg/24h
- Ice box: 1.9kg
- Ice shape: Cubelet ice
- LED operation buttons
- Design prevents touching the lip of a glass



## CUBELET ICE dispenser DCM-120KE 125k/4b

The DCM-120KE is an ice/water dispenser ideal for hospitality, catering, and health-care. It offers cubelet ice, ice and water, or water only, with adjustable portion control for self-service convenience.

- Capacity: 125kg/24h
- Ice box: 4kg
- Ice shape: Cubelet ice
- LED operation buttons
- Design prevents touching the lip of a glass



# Distribution Network

## Distribution Network:

Thanks to the support of our customers, Cubes Asia is present throughout Vietnam through a nationwide network of showrooms and customer service centers in Ho Chi Minh City, Da Nang, and Hanoi, as well as a network of authorized dealers throughout the country.

 **Regional Distribution Center**

 **Service partner**



# OUR BRANDS



# OUR PROJECTS



**HILTON SAIGON**



**INTERCONTINENTAL HO TRAM**



**HOLIDAY INN HO TRAM**



**MOVENPICK PHU QUOC**



**NOVOTEL PHU QUOC**



**MELIA HO TRAM**

# OUR PROJECTS



**ZANNIER BAI TRAM**



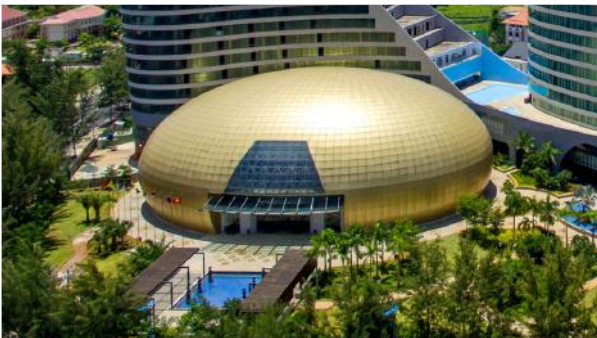
**THE ANAM RESORT**



**BW PREMIER MARVELLA NHA TRANG**



**MIA CAM RANH RESORT & SPA**



**PULLMAN VUNGTAU**



**SANCTUARY RESORT**



Cubes Asia Co., Ltd.

*Thank you!*

#### HOSPITALITY EXPERTS

Please call our hospitality expert for a competent consultation

##### Coffee And Capsules Contact

Ms. Truc

☎ (+84) 903 943 120

##### Equipment Contact

Ms. Nhi

☎ (+84) 909 567 960

#### SAIGON SHOWROOM

Sarimi A1-00.10, 74 Nguyễn Cơ Thạch,  
Phường An Lợi Đông, Thủ Đức, Hồ Chí Minh

##### Head of Consumer Division

Ms. Nga

☎ (+84) 909 944 058

##### Service Contact

Ms. My

☎ (+84) 906 383 677

#### HANOI SHOWROOM

87 Lê Hồng Phong, Phường Điện Biên,  
Quận Ba Đình, Hà Nội

##### Showroom Manager

Ms. Trang

☎ (+84) 907 838 395

##### Service Contact

Mr. Hoan

☎ (+84) 903 775 286

Please contact us by phone number or email [info@cubes-asia.com](mailto:info@cubes-asia.com) for competent consultation