

# On the Fly

THE MAGAZINE

*A Monthly  
Publication for the  
Motorcycle Enthusiast*

**EAGLE WINGS MOTORCYCLE ASSOCIATION**



**Friends for Fun, Safety & Riding**

**INAUGURAL COVER EDITION**

***EWMA's FIRST Publication-Style Edition!***

Out with the Old-  
In with the New!  
VP of Operations

Articles from  
Region F & VP of  
Membership  
Development

Member & Vendor  
Articles

Join us for the  
Colorado Ride-In!

**January, 2024**

**Kits in stock and ready to install...**



**KD Cycle, LLC is an Independently Owned Motorcycle Dealership, in Alabama. We buy, sell and trade all makes and models of used motorcycles, specializing in Honda Goldwings. We are an Authorized Dealer for Roadsmith Trikes and have almost 15 years in the business. We also do new trike conversions with 1 day turn around available. Call today and let us help you find the perfect motorcycle or trike!!!**



# KD CYCLE PARTS

- ✘ PARTS
- ✘ UPGRADES
- ✘ ACCESSORIES
- ✘ ESSENTIALS

871 GILLILAND ROAD, ALTOONA, ALABAMA 35952

[KDCYCLEPARTS.COM](http://KDCYCLEPARTS.COM)

**EAGLE WINGS MOTORCYCLE ASSOCIATION**



# In this issue:

January 2024

- 4      **Contacts within EWMA**
- 5      **Presidents' Corner**
- 6-7    **Out with the Old, and In with the New**
- 8      **Meet Roger & Sue Bahe, Region "E" Directors**
- 9      **Meet our New VPs of Membership Development**
- 10     **All Things Digital**
- 11     **Fall Camping and Ride**
- 12     **KD Cycle Message**
- 13     **MTS Towing, what you need to know**
- 14-15 **Colorado Ride-In: What to Do?**
- 16-17 **Colorado's Crown Jewel for Motorcyclists**
- 18     **Upcoming Events**



**KD Cycles 2024 Goldwing Trike  
Kits are now available.**



<https://www.ewma-world.org/>

EAGLE WINGS MOTORCYCLE ASSOCIATION



<https://www.ewma-world.org/>

## Our International Team

### Founders

Anita and JR Alkire  
Bruce and Barb Beeman

### Officers

Anita Alkire, CEO  
Bruce Beeman, COO  
Bob & Nan Shrader, President  
Patti O'Neill Esposito, CFO

### VPs of Operations

Don & Rhonda Weed  
John & Yvette Moravec  
Chris Toomer  
Dave Ward & Giselle Collins  
Alessandro Boveri & Maria Rosa Bruzzone (Overseas)

### VP of Safety/Ride Coordinator

Bob and Renae Hicks

### VP of Membership Development

Bruce & Tina Gebhard

### VP of Membership Benefits

Bill and Cheryl Smith

### VP of Finance

Randall and Janet Drake

### OTF Editor

Open

### Director of Technology & Communication

Mike Melton

### Director of Marketing

Don & Rhonda Weed

### Director of First Aid/CPR

Todd Stark

## Our Region Directors

### Region A

Jim & Sue Jackson

### Region B

Jim & Reba Berry

### Region C

Open

### Region D

Chuck & Betty Bonnett

### Region E

Roger & Sue Bahe

### Region F

Lloyd & Becky Glydewell

### Region G

Mike Vaillancourt

### Region H

Lee Stevens

### Region I

Bob Cochran & Darlene Drouin

### Region J

Ron & Bev Clark

### Region K

Alessandro Boveri & Maria Rosa Bruzzone



## Presidents' Corner

As we roll into the New Year 2024, Nan and I would like to wish all of our wonderful Eagle Wings Motorcycle Association Members and Volunteer Leaders a great 2024! We look forward to a fun-filled and exciting year, complete with new and fantastic EWMA events, both riding and social. These events are being planned all across America and Canada and the folks who are working diligently to make them happen are ensuring that they are all up to EWMA standards, featuring great riding opportunities and social activities. We had a great 2023 and are striving to make sure 2024 will be even better. It's hard to have a good time if you don't participate, so come on out and join us.

We know that the International Team of Eagle Wings is working hard with our Regional and District Directors to assist them in any way as they develop their Chapters

and recruit new members. We all want to grow Eagle Wings and of course, that means more new folks. This is vital to our long term health as an Association. So, as you travel about on rides or to motorcycle events, try to be alert to folks that you think would make good members of EWMA, if they aren't already. It can be as easy as just starting a friendly conversation. We have a good range of recruitment material for your use. If you don't have any, ask your Chapter, District or Regional Director, or you can download them from the EWMA web site.

Nan and I want to wish you all a Happy New Year and extend our thanks to each and every EWMA member for all you've done to help us make 2023 a great year. With your continued help we'll continue to expand our membership and make Eagle Wings the best Motorcycle Association anywhere. Thanks!

*Bob and Nan Shrader, President*

## Eagle Wing Store

### Featured Item for the Eagle Wings Store for the month of January

Pull off an incredible outdoor look thanks to this men's mid-weight full-zip jacket with matching color nylon zipper. Made of 100% polyester, this stylish 9.6 oz. jacket has an anti-pill micro fleece designed for warmth and comfort. It features two front zip pockets, a stitched shoulder yoke and an adjustable bungee drawstring. It comes in Black, Gray, Navy, Royal Blue and Optic Yellow and in sizes from S to 6XL. Dress to impress today!



Place your order at: <https://mysticalmoment.biz/shop/ols/products/micro-fleece>

## Don & Rhonda Weed VP Operations



### **OUT with the Old: IN with the New!**

**HAVE YOU** heard comments such as:

“That’s the way we’ve always done it,”

“It’s always been done that way,”

or even “I’ve been doing this for many years and I’m tired of doing it”?

You have likely been a first-hand witness to **“Old Box Syndrome!”** We must then ask: **“WHAT is Old Box Syndrome?”** Old box syndrome is simply always resorting to the same old box of ideas, events, rides, games, tips, agendas, meetings, and “rules” that you’ve always gone to. It’s what is FAMILIAR, it’s what someone said worked at one point, what we’ve always done, said or gone to in the past. Yes: there may be a FEW of these items that brought some fun and participation at one time, depending on how well they were presented.



**However:** Most of us that know this **“Old Box”** also know the end result of what is inside the box. And if you’re still reading, **YOU** know that it is not what we’re striving for in Eagle Wings Motorcycle Association!

TODAY- **YOU** have a CHALLENGE: Resolve to grab that old box and fold those top flaps closed and locked. Wrap the heaviest tape you can find around it, march to the dumpster and heave it into the furthest corner you can reach. Too heavy or hard for you to do alone? Enlist the help of some friends! Make a pact with another member, couple, or a group of friends to keep each other honest and make sure that

the “Old Box” remains in that Dumpster! Call each other out (in a friendly way) to make sure you remain out of that old box!

Now for the Realists that are reading here: **Yes-** we saw you sneak two items on the second shelf behind some books when you “thought” no one was watching. **Don’t worry: It’s ok as long as they STAY there on that shelf for now!**

The next part of the CHALLENGE is to find a NEW box! Rather than the huge, bulky and tattered one you just tossed: Perhaps grab for something SMALLER, knowing that you’ll select NEW items that will bring FUN, Excitement, Participation and VALUE to the members of your Chapter, District or Region. Make each NEW item stand the test of “Does it benefit the Members: And does it bring FUN and Participation”. Feel free to have fun with it- and for the artistic ones- decorate the figurative “box” however you like. Take pride in it as you add new items!

If an item you and your team came up with doesn’t make the grade after you’ve tried it: Discuss it together. Ask what you could do differently that would achieve a clearly SUCCESSFUL



outcome. If it just doesn't work, then TOSS IT and try something NEW! Remember the new box is small for a REASON: Less CLUTTER!

As you look for the "Resources, Tools and Tricks" you'll need, go to the EWMA Website at: [ewma-world.org](http://ewma-world.org). Make sure that you're logged in as a Member, and then visit MEMBER RESOURCES to find: Benefits and Services, the EAGLE BOOK, DOCUMENTS and more! Be sure to visit each regularly and become familiar with all that Eagle Wings Motorcycle Association has to offer! In the **DOCUMENTS** menu you will find information pertinent to ALL MEMBERS, as well as sections under **Forms & Handbook** that will

help you access the LATEST and most UP-TO-DATE forms, Tools, and Resources for your Chapter, District or Region!

Watch for the On the Fly Magazine each month. If you try something new and it works FANTASTIC: Share it with the Membership by snapping a couple pertinent pictures, a picture of yourself, and sending an article to [editor-ewma@ewma-world.org](mailto:editor-ewma@ewma-world.org)!

*After some time has passed-* you're bound to recognize that one of the NEW IDEAS in the "NEW BOX" would be absolutely AWESOME if you combined it with one of those items you "hid on the bookshelf" (Remember: The ones you hid earlier when you thought no one was looking). THIS is the time to consider combining it into the new box, so that it can make a good idea AWESOME!

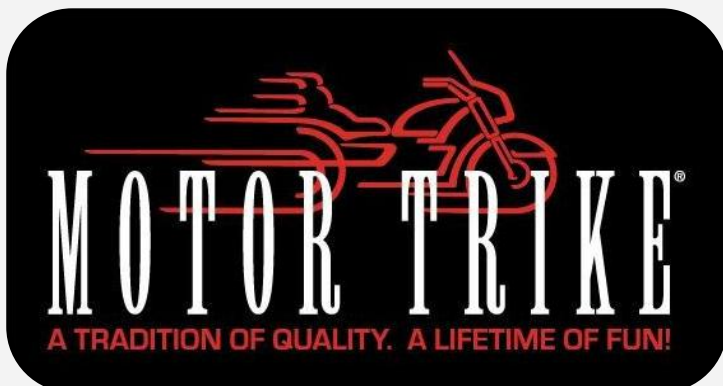
For those who have been officers for a while: There is an unexpected benefit to this CHALLENGE: When you threw out that old box, there was a lot of baggage, frustration, or perhaps even what some might call "burn-out" that went out with the trash, too!

**In closing:** Yes, there are SOME items that will end up having been in both boxes. Think of it this way: When you build a new house, there are certain rooms that you must insist it have... in fact, you might decide you want several of them. Why? Because it's a NECESSITY to make things work! But that also doesn't mean they look or feel identical to the "old".

Remember your friends and fellow members: **Keep that new box HONEST and it will help to make your Chapter, District or Region a Resounding Success for months and years to come!**

*Don & Rhonda Weed*

*V.P. of Operations*



**Sierra Electronics**

"Motorcycle Audio Store"



## Roger & Sue Bahe Region E Directors

Since this is our first “On the Fly” article, let us begin with a brief introduction:

We are Roger and Sue Bahe, and we serve as the EWMA Region E Directors. We live in northeast Iowa, which puts us pretty much in the center of our region. Region E is located in the upper Midwest, and consists of Missouri, Illinois, Wisconsin, Minnesota, North Dakota, South Dakota, Nebraska, and our home state of Iowa.

Our daughter’s family, including our two grandsons, live close to us, and our “travel destination son” lives in the Pacific Northwest.

Living in the upper Midwest, we are currently in the “non-riding” season of our motorcycling year. But that doesn’t mean there isn’t anything to do! This is the time of year for bigger maintenance jobs and planning (read dreaming) for the riding portion of our year.

When we look at maintenance, we’re not just looking at the addition of chrome and lights to our motorcycles, the ordering and installation of new tires, checking/changing the various fluids our motorcycles have in their systems.... But we also need to look at the maintenance/updates our bodily systems need! Personally, this past year has been pretty trying for Roger but, working with healthcare professionals, we are looking at getting those systems corrected also... and being ready for riding season! A couple of our home chapter members are recuperating from joint surgeries to help “tune up” their bodies and being able to physically be the best they can be to operate their motorcycles. Is there any bodily maintenance you need to undertake to reduce a possible painful distraction while you’re out there riding? Now may be the time to look into that so you and your bike are both in tip-top shape!

Not being able to ride our motorcycle because of winter weather does not mean there aren’t things to do in EWMA! Before the riding season begins we have several winter district events to attend. We’ll be attending “on four wheels”, but it still gives us the opportunity to get together with members from other states and HAVE FUN! (And I’ll let you in on some inside information: You don’t need to be an officer in your chapter, district, or region in order to attend! You just have to want to share comradery with others interested in motorcycling... and want to HAVE FUN! )

The same secret applies to planning trips to district summer rallies... the Region E “season” begins in mid-May! There is the EWMA Ride-in in Loveland, CO in June, the Region E Ride-in in July, Rendezvous in August (in Green Bay, Wisconsin... which just happens to be in Region E! ), and concluding the region rally season with our home district of Iowa in September!

Hopefully all our bodies, as well as all our motorcycles, will be fully maintained and ready to hit the road to see our FRIENDS at these upcoming events.... And HAVE FUN!

Treat yourselves, and your bikes, well!

*Roger and Sue Bahe,*

EWMA Region E Directors



# Bruce & Tina Gebhard VP Membership Development



## Hello Eagle Wings Members,

We are excited by the recently announced realignment of Vice President duties, adding Membership Development to our focus group duties. This makes sense considering many of our group topics have to do with membership growth.

We look forward to helping you grow your Chapters and Districts! We are currently working on some ideas, but we are always looking for your input as well. You see, YOU are the greatest Member recruitment tool in our toolbox. We all love our Chapter friends, our District friends, our friends all over the country! What we have is an incredible family. Who wouldn't want to recruit people to join us?

We have a fantastic brochure on the Eagle Wings website that is an informative "freebie" to give to someone when you start a conversation about motorcycles and riding. We all love to talk about our bikes, the rides we have taken, and of course, the friends we have made along the way. This brochure is a great tool to have in your glove box, tail trunk, you name it; have one with you wherever you go. That's all there is to recruiting, plain and simple.

We would like to personally challenge each of you to find at least one new Member this year. Imagine the impact of doubling our organization!

Please reach out to us if you have ideas for membership growth, or ways we can make EWMA even better. Our new email is: [ewmavpofmd@gmail.com](mailto:ewmavpofmd@gmail.com) or call us at (608)516-5520. We look forward to chatting with you!

*Bruce & Tina Gebhard*

VP of Membership Development

### **NOTICE to all Directors and Treasurers**

We have uploaded a PDF Fillable Annual Financial Report Checklist.

Once you log in to our website, you can download from the Document Library under "Financial/Treasurer Info" section, or see the link to the document on the Home Page.



## All Things Digital

Digital news, and not all about our website in this issue. Hope you will find some of these tidbits helpful.

**Warning, this is no joke:** Hackers are breaking into Google accounts using a flaw in third-party cookies. Google is scrambling, fixing accounts and recommending Enhanced Safe Browsing for extra defense. Turn it on if you haven't already.

**Size matters:** Use Excel often? If you save big files in the XLSB format instead of XLS, the file size will shrink up to 75%. For MS Word users, DOCX files are smaller than DOC.

Reminder about **our website**. Members need to login in order to see everything that is there. Not all items or information is available to the public. The only way we can control this is to identify documents, webpages, data within web pages, as either public or member only. So, if you are not logging in to <https://www.ewma-world.org> website, you may be missing info. This includes how to take advantage of some of our Member Benefits.

There have been changes to our website, and there will be more. We are in the process of loading up all our Sponsors & Vendors under our "**Business Directory**". The vendors can add information to their listing. You will find contact information, to include names, phone numbers, email, website, Facebook links and other information. Be sure to check it out.

We have also added some **new menu links**. Had someone to suggest we have a link to our **EWMA Handbook**, so people did not have to go search for it, and we thought it was an excellent idea. The Handbook is for everyone, and explains everything about Eagle Wings Motorcycle Association you would ever want to know (plus some). Great

for officers also, as it explains in detail their roles. Also some fun ideas referenced there, to help you out.

If you ever receive an email reference some changes to your account, be sure to note if it is from Team EWMA. There are lots of scams out there today, and people use phishing to get into your system. We value your privacy, and will always put the member first. When in doubt if the email came from us, you can verify by emailing us at [eaglewings.web@gmail.com](mailto:eaglewings.web@gmail.com).

I'm in the process of wrapping up the final changes to a **Directors Web Guide**. Even though it says Directors, it can be useful to everyone. The final product will soon be distributed to all the Region Directors, who will then forward down, as each director should. It will also be located in our "Documents Library" for members who have logged into the website. We hope you enjoy and find this document useful.

And I wish I had run across this before Christmas, but here it is anyway.

**Before you buy a laptop:** Dell is waving goodbye to the XPS 15, 17 and 2-in-1. They're all either discontinued, or it's happening soon. Don't buy an outdated computer, folks. The XPS 13 is the new laptop standard for Dell if you're shopping.

If you have a tech tip you would like to share, send it my way. We will be glad to include it in a future editions

*Mike Melton*

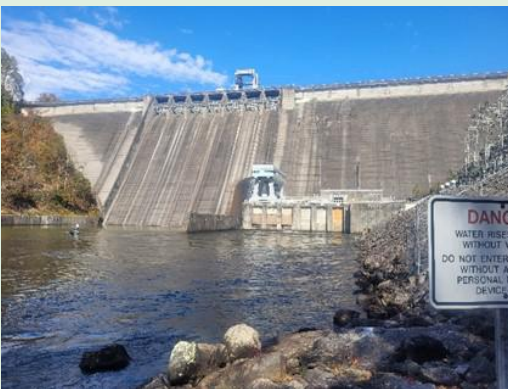
Director of Technology and Communications  
[eaglewings.web@gmail.com](mailto:eaglewings.web@gmail.com)

## Member Article

# Fall Camping and Ride

This year the weather has been very nice so several of us “motorcycle camper guys” decided to get in one last trip to the North Carolina mountains. We had planned to leave on Monday October 30<sup>th</sup> and camp at Ela Campground near Bryson City and Cherokee. This is a nice little campground on the Tuckasegee River.

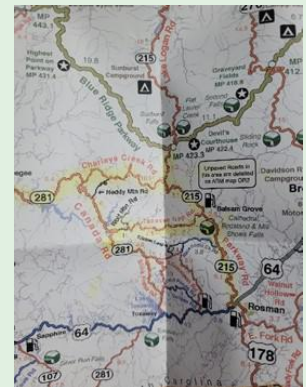
Well mother nature had other ideas, it is fall after all, and it looked like the first big freeze of the year would arrive right in the middle of our trip. We were doing a wait and see to decide whether to go or not. No fun camping in freezing temperatures. A



couple of us decided to pack up and leave as soon as possible before the weekend and then come back before it got cold.

So that is what we did. Two of us left on Friday and went to camp with two more to follow on Saturday. We ended up with several days of perfect fall weather in the mountains. The leaves were a little past peak color on the higher elevations but there was still lots of color left. Even the leaf peeper traffic was light and there were motorcycles everywhere.

We spent several days with good friends, good curvy mountain roads, good scenery, just plain good time all around. As usual our time came to an end way too soon and it was time to head back home.



*Richard Kitko*

EWMA-SC Safety/Ride Coordinator

Do you have a story you would like to share. Send it to [ewma-editor@ewma-world.org](mailto:ewma-editor@ewma-world.org) Not a good writer, send us the facts and let us get creative. Be sure to send those pictures too. Pictures are worth a thousand words.

## From KD Cycle



As I sit in my shop on this early New Year's Day morning, while looking forward to the blessings that I know God has in store for 2024, I find myself in a moment of reflection. Looking back at the last year, Proverbs 27:17 rings true for me:

***“Iron sharpeneth iron; so a man sharpeneth the countenance of his friend.”***

KD Cycle has enjoyed tremendous success in the trike business. Now in our 19th year, from a garage in our backyard, we have grown into the largest volume trike dealership in the country. That was my goal those many years ago, but I could never have dreamed what it would really bring to me. I have the opportunity to work with my family every day. Two of my brothers worked with me for many years, and now my wife and daughter run our office and online parts store [kdcycleparts.com](http://kdcycleparts.com). But maybe the greatest success has been the friendships that have come our way through this business.

The definition of the word “countenance” is support, and the support we have received from friends we have gained through KD Cycle has been overwhelming. In 2010 our daughter Blayke was diagnosed with type 1 diabetes. That year she founded Blayke's Brigade, which began as an organization to raise money to provide Christmas gifts to children in the hospital. Last year as she began fundraising, the very first donation came from EWMA Co-Founder Bruce Beeman. The first people through the door at her first fundraising event were EWMA Members. When online registration began for the second event, the first registrations came from EWMA Members. Now that's what I call “sharpening the countenance of a friend.” When EWMA began we tried to offer our support in any way we could. As it turns out, any support we could offer pales in comparison to the support we have received from EWMA.



This morning as I reflect on the last year, the time spent with friends at rallies, the cards, letters and messages of support for me and my family are the things that I remember most fondly. This is what EWMA is all about.

If you've heard me speak at a rally you know I have to ask you to please visit [kdcycle.com](http://kdcycle.com). We hope you check out our Honda Goldwing Roadsmith Trike inventory, but even if you're not interested in our inventory, please click on the “free” tab and read the special message on that page.

I can't wait to see what 2024 brings and I hope we all strive to “sharpen” each other. We hope to see you all soon. God bless.

*Kevin, Michelle & Blayke Dodd*

KD Cycle Team





Motorcycle Towing Services (MTS) originated in 1988 based in Las Vegas, NV. We have been proud to provide roadside assistance to motorcycle riders for more than 35 years. We provide this service solely to motorcycle riders, covering the entire U.S., including Alaska and Hawaii, and Canada. We do not cover cars, trucks, vans, etc.

MTS was created by Gene Wagner, a Vietnam War veteran. In 1987 Gene was riding his Goldwing in New Mexico. When he had a breakdown, he expected a provider that could treat his bike with the same care that he wanted. When a greasy flatbed and chains showed up, Gene recognized the desperate need for quality roadside assistance for motorcycle riders. Gene built the company from the ground up. He started attending rallies and connecting, literally signing one person and one provider at a time.

MTS has grown and expanded over the last 30+ years. Our coverage now goes well beyond the thousands of individual riders. Today we cover countless OEM's, dealerships, insurance companies, rental companies and various riders' groups.

In 2006, Gene sold the business to his brother, Jeff. Jeff was also a Vietnam war veteran and

also an avid Goldwing rider. He hired Jeff Riley to work as the Towing Manager. In 2016, the company was purchased by Jeff and Dawn Riley. Jeff had 10 years' experience with MTS and was also the son-in-law of the original MTS owner's family. Since then, Jeff has elevated the company to fit his vision.

As mentioned before, both of the previous owners were avid Goldwing riders. They were also members of the Goldwing Riders' Group. MTS was informed when Honda chose to end their roadside assistance. After a series of phone calls, we were able to talk with Anita Alkire at EWMA and customize a plan to cover everyone in EWMA. We now offer 40-55% discount on our most popular plans. We cover two bikes on each membership, regardless of the make or model, as well as the trailer they pull.

From brother to brother to son-in law, MTS has been and continues to be a family owned and operated company. This allows MTS to provide personalized customer service that is only found in a small business setting. MTS offers the latest technology and equipment for all motorcycle roadside assistance needs. MTS is proud to be a vital part of the motorcycle community.

**MOTORCYCLE TOWING SERVICES, L.C.**  
**MTS**  
 RIDE WITH MTS, YOU WILL NEVER RIDE ALONE

UNITED STATES • ALASKA • CANADA • HAWAII  
**1-800-999-7064**  
 401 S. STATE ST., DENVER, IA • WWW.MTS-TOWING.COM  
 INFO@MTS-TOWING.COM

# 2024 International Ride-In, Loveland, CO

## Colorado Ride-In: What to Do?

By Chris Toomer, EWMA VP of Operations & Colorado Member

Colorado has SO MUCH to offer us motorcyclists and the EWMA Colorado Ride-In June 21 and 22 is a perfect opportunity to come find out for yourself! EWMA and the Colorado District can't wait to welcome you to the American West and the Colorado high country! Below is barely a tidbit of some fun and interesting things to do to experience Colorado in your own way.

### Peaks and Passes

What would coming to Colorado be like with nary a reference to our beloved Rocky Mountains?!!! Felonious, I think! So, let's avoid that uncomfortable situation and let that beautiful cat out of the bag!

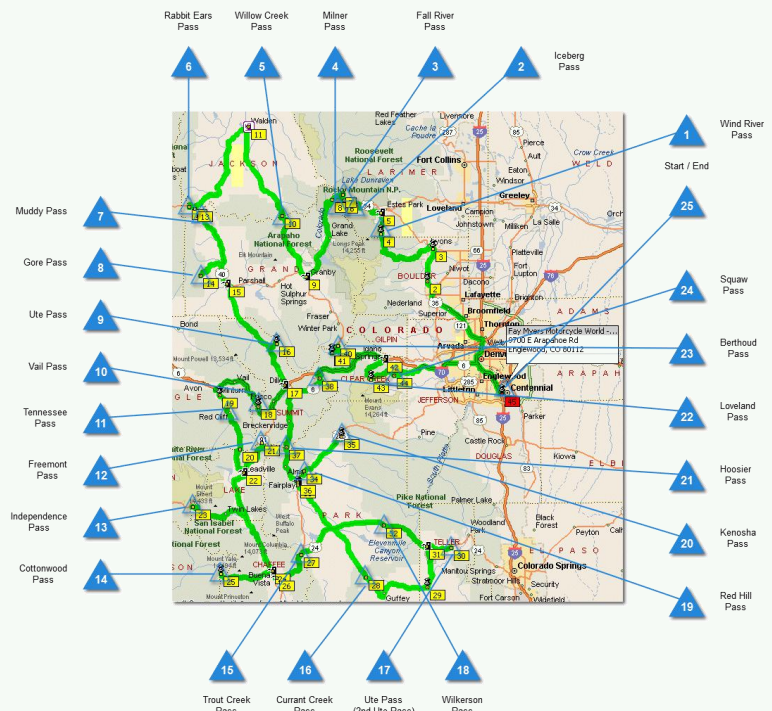
Colorado has over 60 mountain passes – most of which are paved – that range in altitude from 6,100 feet above sea level to an oxygen-deprived 12,183 feet above sea level, the latter being none other than the very famous Trail Ridge Road Summit in Rocky Mountain National Park. Too much oxygen for you at 12K feet? Both Pikes Peak at 14,115 feet and Mount Evans at 14,160 feet are easily within reach of Loveland, CO. Do check ahead of time to see if there are entrance fees or reservations required. The map (from the 2005 "24-Passes-in-24-Hours Endurance Ride") illustrates the close proximity of a large number of mountain passes within range of Loveland.

Did you know Colorado is home to 58 peaks that breach 14,000 feet in elevation. We lovingly refer to these as our Fourteeners, or 14ers. Want to see some? View the Collegiate Peaks between Leadville, CO and Buena Vista, CO (say Bue nuh vis tuh, not bway nuh vis tuh in Colorado) along Hwy 24. On your way, make time to stop at Fremont Pass along Hwy. 91.

### Colorado Springs

Colorado Springs, or 'C' Springs as we often call it, is about 2 hours south of Loveland, CO and has a lot to offer. The United States Olympic & Paralympic Museum as well as the Training Center are in C.

24 Passes in 24 Hours Map (27-Aug-2005)



Springs. The very famous Air Force Academy is right there as well. Like rodeo? The Pro Rodeo Hall of Fame is an interesting look at the history of rodeo. Want to ride through a beautiful, free entrance park? Check out Garden of the Gods (image credit: By John Fowler from Placitas, NM, USA - Garden of the Gods. Of course, there are restaurants galore and many other things to do in and around C. Springs, including a ride up to Cripple Creek, one of Colorado's mountain casino towns.



(<https://commons.wikimedia.org/w/index.php?curid=24663390>)

## Blackhawk / Central City

Speaking of mountain casino towns, within easy reach of Loveland, CO is the other pair of casino towns, Blackhawk and Central City. There are some very nice rides from Loveland to these towns to enjoy a relaxing lunch at one of the casinos.

## The Buckhorn Exchange and Craft Beer

Want to experience one of the oldest, still operating restaurants in the United States? The Buckhorn Exchange in Denver opened in 1893 and received Colorado's first ever liquor license! Several Presidents have dined there and their collection of over 500 mounted animals and 125-piece historic firearm collection make it a truly unique experience. The menu includes various specialties like beef, buffalo, elk, quail, and others. Prices are on par with other high-end steak houses. Colorado is also known as the Napa Valley of Craft Beer and, with over 400 breweries in the state and 10+ around Loveland, you won't have a problem locating a brew pub or craft beer to enjoy at the end of the day with friends, both new and old. And there are various ride options if needed including taxis, Uber, and Lyft generally available. Some hotels may even have shuttles you can use.

## Howl at the Moon Ride

Colorado's EWMA Chapter in Loveland, CO hosts an annual Howl at the Moon Ride. They typically pick a Saturday night that is close to a full moon and enter Rocky Mountain National Park later in the evening, ride to the Visitor's Center at top of Trail Ridge Road and, well, Howl at the Moon! It's a uniquely Colorado thing and the current plan is have Howl at the Moon Ride on Saturday, June 22 after dinner and closing ceremonies. If you're interested, stay tuned to On the Fly as an upcoming article will share more details. The important thing to note is that you won't get back to your hotel / campground until after midnight and you might want to plan your departure around this event.



# Colorado's Crown Jewel for Motorcyclists

By Victor Wheeler, EMWA CO Safety & Ride Coordinator

While there are literally dozens of amazing rides in the Colorado Mountains, one in particular stands out because of the sheer majesty of the views, wildlife, and the extremes of elevation changes: Rocky Mountain National Park. People who live on the eastern slopes of the Rockies (e.g. Loveland) typically approach Rocky Mountain National Park from the east, which means going through the town of Estes Park. Those coming from the west side of the Continental Divide approach through Granby and Grand Lake, Colorado.

There are 4 ways to get to Estes Park from the east (in order from south to north):

Peak to Peak Highway [Hwy 7 / Hwy 72] (coming from the south);

Highway 36, from Lyons (from the south-east);

Highway 34, from Loveland (from the east);

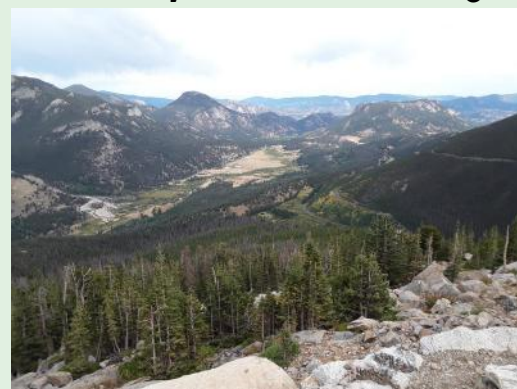
Devil's Gulch [Hwy 43] from Glen Haven (from the north-east). (Note that this one requires some skill in steep curve maneuvers in 1<sup>st</sup> gear, due to 4 steep up-hill 180-degree curves coming from the east. Of course, this is much easier going downhill if you choose this route on the way back to Loveland.)

Once you're in Estes Park, there are 2 entrances to the National Park:

The south entrance (most popular) is on Hwy 36, which gives easy access to Bear Lake and Trail Ridge Road. (Bear Lake is an amazing scenic picnic location if you don't mind sitting on a rock).

The north entrance is on Hwy 34 and takes you immediately into Fall River Valley and meets Trail Ridge Road about 1/3 of the way up. Both entry points converge on Trail Ridge Road. Trail Ridge Road then proceeds in one of the most scenic ways possible over 3 mountain passes, 2 of which are well above the "tree line" at 11,600 feet above sea level. Places you will regret if you don't stop and take out your camera:

Rainbow Curve Overlook (with an eastern view) over Fall River Valley and Estes Park.



Parking area just west of Rock Cut (with a southwestern view) (Rock Cut is recognizable by having vertical rock on both sides of the road).



Fairview Curve Viewpoint (with a western view overlooking Colorado River Valley).

There are many other places to take photos, but these 3 are my favorites.

On the way down the west side of Trail Ridge Road, the last 180-degree turn is 4 miles from the Colorado River Headwaters (only reachable by hiking). Trail Ridge Road then follows the Colorado River south where there are plenty of pull-outs for a rest stop and/or to take photos of herds of Elk grazing on the lush grass near the river. If you're the type that likes picnics, pull into the Coyote Valley Trailhead parking area and carry your lunch to the Coyote Valley Picnic Area, only a 200-yard easy walk away, just on west side of the Colorado River, where you can sit, and enjoy a meal and rest for however long you like. Chances are one of the Elk herds in this valley will be visible while you eat. From there (or at the National Park's exit gate, or anywhere else convenient) do a U-turn and head north again, and drive Trail Ridge Road going the opposite direction. Why is this worthwhile? Because the views crossing the Park going east are COMPLETELY different than the westbound views! You can thank me later!

Here are a few of Coloradans' favorite places to stop for meals.



## Breakfast

### **The Egg of Estes**

393 E Elkhorn Ave  
Estes Park, CO 80517  
+1-970-586-1173

### **Big Horn Restaurant (voted best Breakfast in Estes Park)**

401 W Elkhorn Ave  
Estes Park, CO 80517  
+1-970-586-2792 (Hint: if you're in a group, call in advance so they can set up a table for you).

## Lunch / Dinner (near southern Park entrance gate)

### **Smokin' Dave's BBQ**

820 Moraine Ave  
Estes Park, CO 80517  
+1-970-577-7427

### **Boss Burgers and Gyros** (this is like a walk-in Sonic with in-door and outdoor seating)

861 Moraine Ave  
Estes Park, CO 80517  
+1-970-586-3137

Happy Trails!  
*Victor Wheeler*

## Upcoming Events

### 2024 EWMA EVENTS

#### JANUARY

Jan 25-27	Illinois District Winter Warm Up	Springfield, IL
Jan 26-27	Ohio Cabin Fever—"Margaritaville"	Oregon, OH

#### FEBRUARY

Feb 2-10	Ninth Annual Wingers-N-Waves	
----------	------------------------------	--

#### MARCH

Mar 14-16	Florida District Friends for FUN Rally	Gainesville, FL
-----------	--	-----------------

#### APRIL

Apr 18-20	Louisiana District Ride-In	Ruston, LA
Apr 25-27	Tennessee District Spring Fling	Johnson City, TN

#### MAY

May 16-18	Arkansas District Rally	Harrison, AR
May 16-18	Illinois District Summer Rally	Vandalia, IL
May 17-18	South Carolina District Rally Home Town USA	Newberry, SC

#### JUNE

Jun 13-14	Georgia District / Region A Ride In	Dillard, GA
<b>Jun 21-22</b>	<b>International Ride-In</b>	<b>Loveland, CO</b>
Jun 27-29	Alabama District Rally	Sheffield-Muscle Shoals, AL

#### JULY

Jul 11-13	Region F and West Virginia District Ride-In "Cue Country Roads"	Summersville, WV
Jul 12-13	MinnKota District Rally "Let's Meet in the Middle"	Marshal, MN
Jul 19-21	Region H Ride-In	Nakusp, British Columbia
Jul 26-27	Region E Ride-In	Anamosa, IA

#### AUGUST

<b>Aug 29-31</b>	<b>2024 EWMA Rendezvous</b>	<b>Green Bay, WI</b>
------------------	-----------------------------	----------------------

#### OCTOBER

Oct 24-26	Mississippi District Rally "Born to be Wild"	Biloxi, MI
-----------	--	------------

Check our website [www.ewma-world.org](http://www.ewma-world.org) for additional events  
 If your event is not listed, please email Mike at [eaglewings.web@gmail.com](mailto:eaglewings.web@gmail.com)

# Eagle Wings Motorcycle Association



## International Ride-In



### June 21 – 22, 2024

Fairgrounds Park, 700 S Railroad Ave., Loveland, Colorado



EAGLE WINGS MOTORCYCLE ASSOCIATION



ONLINE REGISTRATION: [EWMA-world.org/ride-in](http://EWMA-world.org/ride-in)



Rider 1: \_\_\_\_\_ EWMA #: \_\_\_\_\_ Officer Title: \_\_\_\_\_  
 Rider 2: \_\_\_\_\_ EWMA #: \_\_\_\_\_ Officer Title: \_\_\_\_\_  
 Phone #: \_\_\_\_\_ Email: \_\_\_\_\_  
 Address: \_\_\_\_\_

The undersigned, agree to comply with the ideals governing this event and to hold harmless the EWMA, co-sponsoring organizations and property owners for any loss or injury to self or property in which I/we may become involved, and I/we agree to assume responsibility for any property which I/we knowingly damage. **EWMA reserves the right to refuse entrance to anyone at any time.**

I / We have read this waiver and acknowledge with signature(s) below:

Rider 1 Signature: \_\_\_\_\_ Date: \_\_\_\_\_  
 Rider 2 Signature: \_\_\_\_\_ Date: \_\_\_\_\_

**\*Registration deadline is June 1, 2024. Cancellation fee \$20. No refunds after June 1, 2024.**

*\*Includes Friday Night Pie and Saturday Night BBQ*

EWMA Members \$40 each x \_\_\_\_\_ = \$ \_\_\_\_\_ Non-EWMA Members \$50 each x \_\_\_\_\_ = \$ \_\_\_\_\_  
 CC# \_\_\_\_\_ EXP \_\_\_\_\_ CVV \_\_\_\_\_ Billing Zip Code \_\_\_\_\_

EMAIL FORM WITH CREDIT-CARD PAYMENTS TO: [eaglewings.web@gmail.com](mailto:eaglewings.web@gmail.com)

Checks payable to: EWMA Mail to: EWMA, 6635 W. Happy Valley Rd., Suite A104-443, Glendale, AZ 85310

**[Or Register Online at https://www.ewma-world.org/ride-in](https://www.ewma-world.org/ride-in)**

# Get your membership dues

**for Free!**

If your Medicare Advantage and Supplement plan includes the Element3 Health benefit, club members can get their Eagle Wings Motorcycle Association membership for free.

**Check your eligibility today!**

Visit [e3hfun.com/EagleWings](https://e3hfun.com/EagleWings)

**ELEMENT3™**  
HEALTH



[info@element3health.com](mailto:info@element3health.com)

(833) 906-1700



## Eagle Wings Rendezvous Eagle Wings Motorcycle Association 2nd Annual Rally Aug 29th – Aug 31st 2024 KI Convention Center in Green Bay, WI



Take a Scavenger Hunt ride to Green Bay, WI and join your friends at the 2nd annual rally, Eagle Wings Rendezvous! We'll have vendors, FUN, presentations, FUN, guest speakers, FUN, games, FUN, on bike games, FUN, and awesome guided and self guided rides to explore beautiful WI! This is an event you don't want to miss!

Lodging links on website  
[www.ewma-world.org/rendezvous](http://www.ewma-world.org/rendezvous)

Plan for FUN!!!

Daily 50/25/25

On Bike Games

Door Prizes

Guest Speakers & Presentations

Bike & Light Show

First Aid/CPR Class

Vendors, Including Motorcycle stuff, Bling & Chrome

**GRAND PRIZE and MYSTERY CASH**

AND

**GRAND 50/25/15/10**

**3 Days & Nights of FUN, FUN, FUN!!!!!!**  
**Thursday GRAND OPENING PARTY FUN,**  
**Light Dinner and Entertainment**

**Friday Night Bike and Light Show Vote for your favorite and enjoy some ice cream!**

**Saturday Night is Dinner and Closing**

**\*For up to Date Schedule & more info, go to [www. EWMA-World.org/Rendezvous](http://www.EWMA-World.org/Rendezvous)**

Registration Fees (onsite \$10 more)	Cost	Qty	Total
EWMA Members	\$40	_____	\$ _____
Non Members	\$50	_____	\$ _____
Day Passes-available for purchase on site			
Light Dinner on Thursday Night	\$25	_____	\$ _____
Dinner on Saturday Night	\$40	_____	\$ _____
First Aid/CPR—Friday	\$25	_____	\$ _____
<b>Tickets—addition to comped</b>	<b>Cost</b>	<b>Qty</b>	<b>Total</b>
<b>Grand Prize &amp; Mystery Cash—Books of 5</b>	\$10 X	_____	\$ _____
<b>Grand 50/25/15/10— Books of 5</b>	\$20 X	_____	\$ _____

**GRAND TOTAL IN US DOLLARS ENCLOSED: \$ \_\_\_\_\_**

**See and purchase our Rally shirt on our website in our store. Pick them up at rally. Some may be available on-site.**

**All pre-registrations must be received by August 3, 2024**

Make Checks payable to EWMA

Mail completed forms to:

**EWMA**  
**Patti ONeill**  
**2125 Meander**  
**Prescott AZ 86305**

For further information  
Contact: Patti ONeill  
Email: [ewmacfo@gmail.com](mailto:ewmacfo@gmail.com)  
Phone 408-639-0415

**\$15.00 fee on all cancellations**  
**No refunds after Aug 5th 2024**

CC# \_\_\_\_\_

EXP \_\_\_\_\_ CVV \_\_\_\_\_

Billing Zip Code \_\_\_\_\_

Name: \_\_\_\_\_ EWMA #: \_\_\_\_\_

Name: \_\_\_\_\_ EWMA #: \_\_\_\_\_

Address: \_\_\_\_\_ Reg/District/Chapter: \_\_\_\_\_

City: \_\_\_\_\_ State: \_\_\_\_\_ Zip: \_\_\_\_\_

Phone: \_\_\_\_\_ E-mail \_\_\_\_\_

The undersigned, agree to comply with the ideals governing this event and to hold harmless the EWMA, co-sponsoring organizations and property owners for any loss or injury to self or property in which I/we may become involved, and I/we agree to assume responsibility for any property which I/we knowingly damage. **EWMA reserves the right to refuse entrance to anyone at any time.**

Rider Signature: \_\_\_\_\_ Co-Rider Signature: \_\_\_\_\_

**Or Register Online at <https://www.ewma-world.org/rendezvous>**



For more information on the discounts with our vendors, login to our website at:

[www.ewma-world.org](http://www.ewma-world.org)