

MACKINTOSH<sup>®</sup>  
SOLUTION-DYED  
OLEFIN

---

axroma

**axroma**  
OUTDOOR PERFORMANCE FABRICS



# MACKINTOSH



Mackintosh® Inside Technology infuses the most advanced PFC/PFAS free DWR polymer melting additive into the blending process with polypropylene chips and high UV elemental pigments prior to yarn manufacturing. All materials are extruded, continuously extended, separately texturized, and spun by air friction or draw stretching to be unique Mackintosh® Inside Olefin yarns that imbed superb repellency to all kinds of moisture and remain its performance after times of rain shower or laundry.

The Mackintosh® Inside Olefin yarns are woven in various constructions for distinctive features and are simply finished by thorough scouring and cleaning to activate forever repellency and other merits. No additional finishing chemical is required, leaving no perfluorocarbon, perfluoroalkyl and polyfluoroalkyl substances to the earth.

Axroma invites you to discover the infinite possibilities of Mackintosh® Inside Technology.

# Statement

---

Axroma is adamant in the belief in sustainability and continue navigating product innovation with sustainable mindset and vision. We identify four directions to make endeavors.

Mackintosh® Inside Technology is the first success in bringing out the most satisfactory and long-lasting PFC free water repellency through solution-dyed manufacturing, which significantly reduces water consumption and chemical treatment in addition to its inherent superior colorfastness. Different styles are curated to cater for various needs from upholstered patio, awning & shade, deep seatings, and decorative accessories.

In pursuit of appealing performance story, a mission to develop a certified collection and processing of traceable post-consumer polypropylene fiber is kicking off to support the single component product concept, that facilitates ultimate recycling. We learn to be honest and humble after being engaged with this environmental responsible venture. We are hoping to produce our performance olefin fabrics with higher consciousness, leaving minimum pollution and closing the loop, soon.



# Monochrome

Abrasion: ISO 12947-2 20,000 cycles Grade 4

Hydrostatic Pressure: 300mm

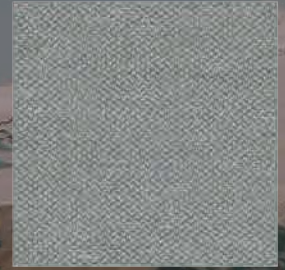
Rain Test Method: AATCC 35 ( Standard 1.0g ) < 0.1g



Denim 506.102



Olive 402.102



Marble Grey 702.102



Aqua Teal 501.102



Chiatea 601.102



Moss 401.102



Admiral 502.102



Onyx 701.102



Flax 602.102



Steel 705.102



Pearl 608.102



Cloud 609.102



Marron 603.102



Salsa 101.102



Forever  
Repelled



Rain  
Proof



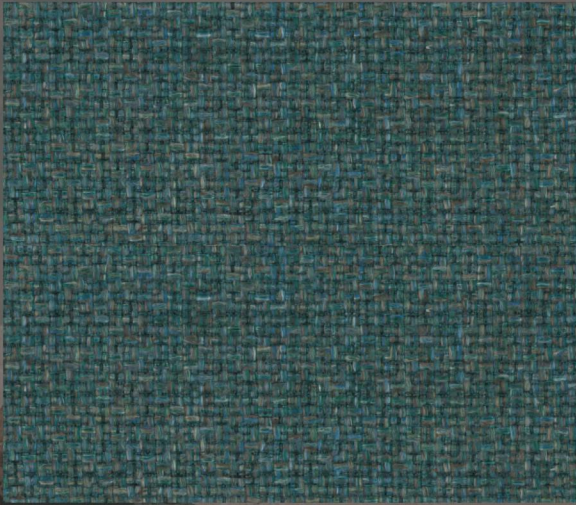
Water  
Resistant



Quick  
Dry

# Alpine

Abrasion: ASTM D4966 36,000 rubs



Verdigris Jade 401.809



Andes Greystone 602.809



Glacier Ice 603.809



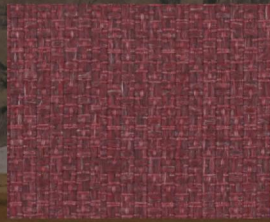
Highland Charcoal 701.809



Atlas Sand 601.809



Amazon 403.809



Chianti Red 101.809



Beige 604.809



Piana Flax 702.809

# Rocky Mountain

Abrasion: ASTM D4966 40,000 rubs



Crimson Red 101.810



Burning Sand 102.810



Tranquil Lake 401.810



Basalt Rock 701.810



Navajo White 603.810



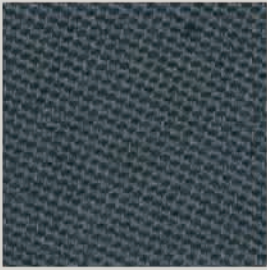
Moose Brown 602.810



Meadow Green 402.810

# St.Tropez

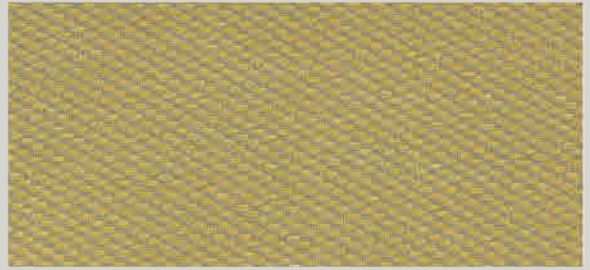
Abrasion: ISO 12947-2 50,000 cycles Grade 4 with optional treatment



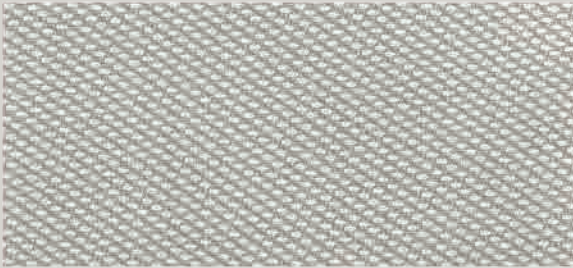
Midnight 502.804



Charcoal 603.804



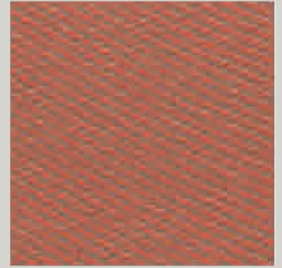
Citron 301.804



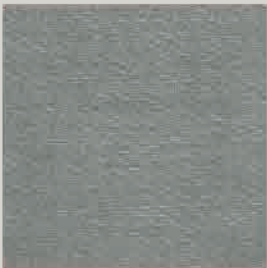
Dove 601.804



Cayenne 101.804



Tuscan 201.804



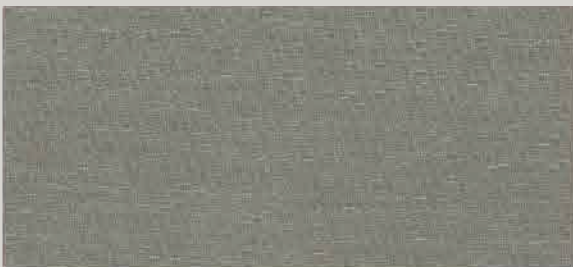
Graphite 604.804



Carbon 701.804



Olive 403.804



Taupe 602.804



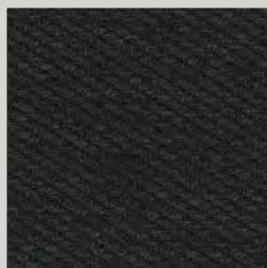
Lakeside 501.804



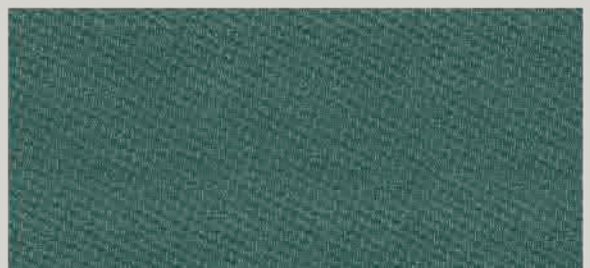
Aegean 401.804



Steel 702.804



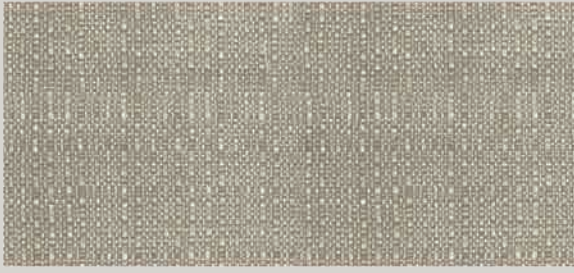
Black 703.804



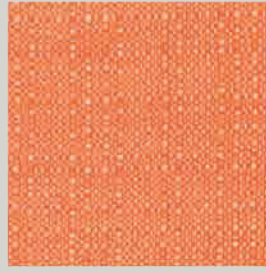
Jade 402.804

# Médoc

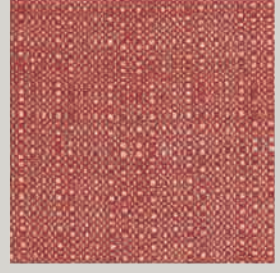
Abrasion: ISO 12947-2 50,000 cycles Grade 4 with optional treatment



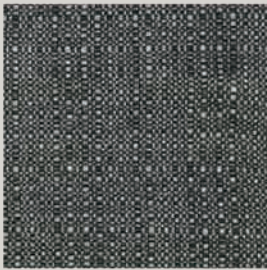
Hemp 602.805



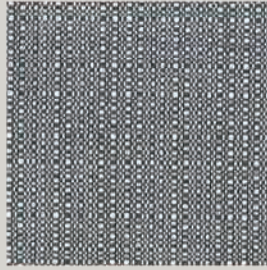
Papaya 201.805



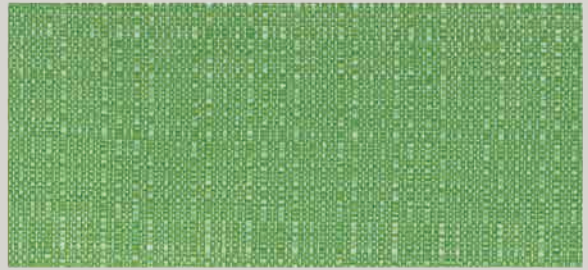
Poppy 101.805



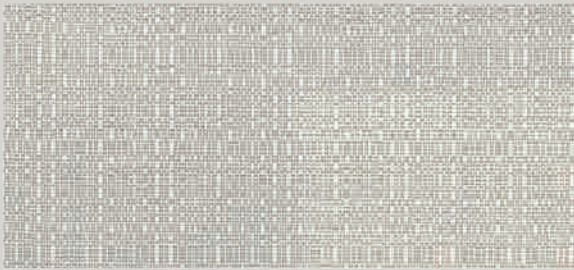
Carbon 701.805



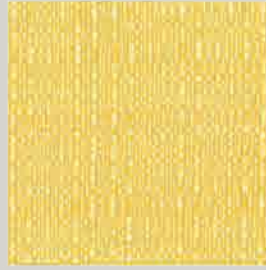
Steel 703.805



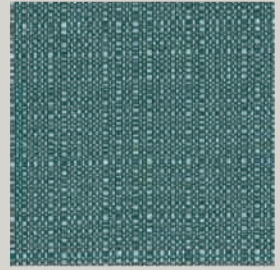
Lime 401.805



Oatmeal 601.805



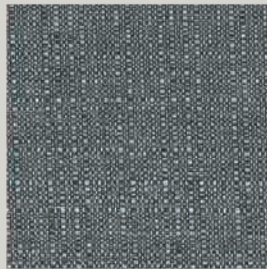
Citron 301.805



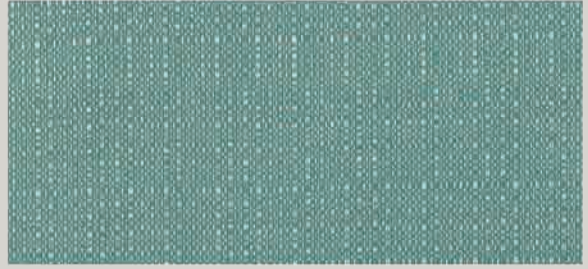
Peacock 502.805



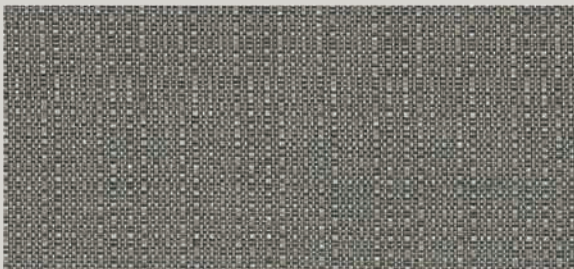
Graphite 604.805



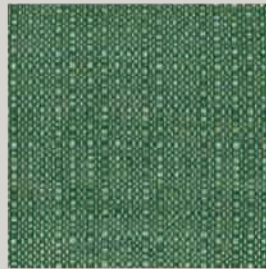
Charcoal 702.805



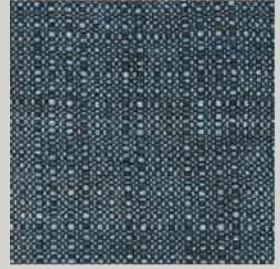
Lakeside 501.805



Sesame 603.805



Amazon 402.805



Midnight 503.805

# Canvas



Garnet 103.800



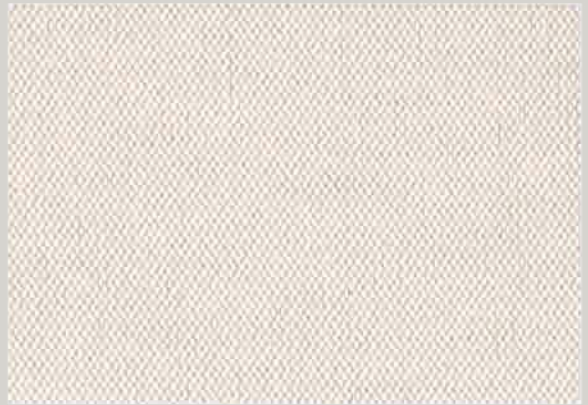
Wheat 603.800



Tuscan 203.800



Lakeside 506.800



Ivory 604.800



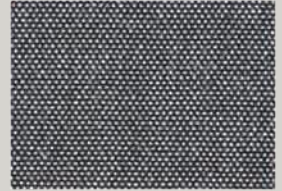
Celery 404.800



Azure 507.800



Midnight 508.800



Cement 706.800



Amazon 403.800



Stone 703.800

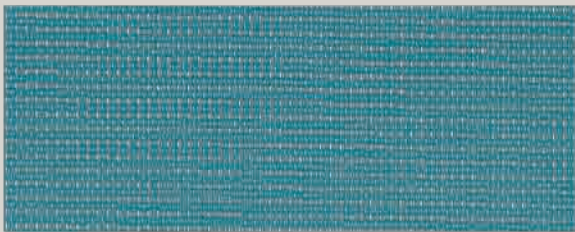


Steel 705.800

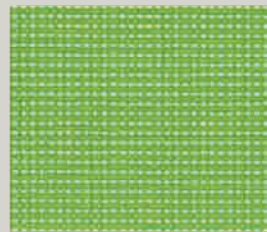


Feather Gray 704.800

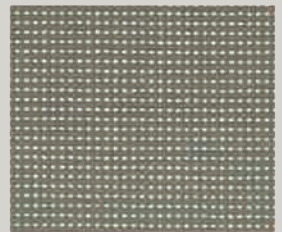
# Birdeyes



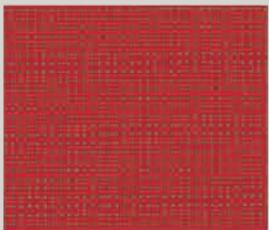
Lakeside 501.808



Lime 401.808



Hemp 602.808



Garnet 101.808



Charcoal 701.808



Oatmeal 601.808



# Fire Island

10" W Repeat



Hemp 601.210



Tuscan 201.210



Jade 401.210



Midnight 502.210



Lakeside 501.210



Lime 402.210



Steel 702.210



Charcoal 701.210

# Bean

10" W Repeat



Hemp 602.203



Tuscan 202.203



Azure 504.203



Garnet 102.203



Citron 302.203



Midnight 506.203



Lakeside 502.203



Amazon 402.203

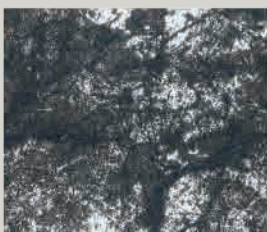


Charcoal 702.203



# Marbling

10" W Repeat



Midnight 501.213



Charcoal 701.213

# Blurkey

10" W Repeat



Poppy 201.212

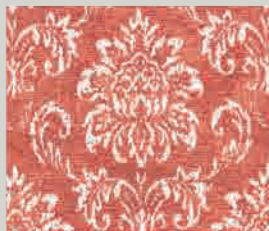


Charcoal 701.212

## Petit Morocco 20" W Repeat



Hemp 601.206



Poppy 201.206



Aegean 401.206



Midnight 502.206



Lagoon 501.206



Amazon 402.206



Steel 702.206



Charcoal 701.206

## Vanity 10" W Repeat



Hemp 602.204



Tuscan 202.204



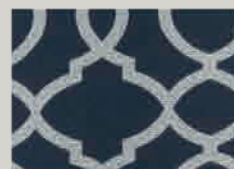
Azure 504.204



Garnet 102.204



Citron 302.204



Midnight 506.204



Lakeside 502.204



Amazon 402.204



Charcoal 702.204

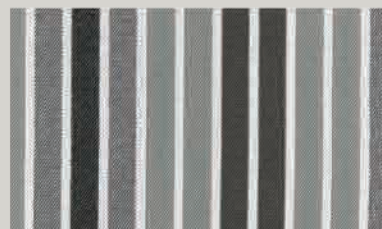
## Parker Stripe 20" W Repeat



Hemp 602.201



Azure 504.201



Charcoal 702.201

# Bluemoon

20" W Repeat



Hemp 601.207



Poppy 201.207



Aegean 401.207



Midnight 502.207



Lagoon 501.207



Amazon 402.207



Steel 702.207



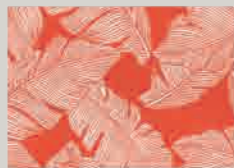
Charcoal 701.207

# Nightingale

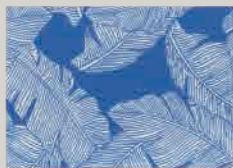
20" W Repeat



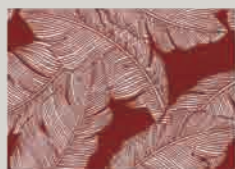
Hemp 602.202



Tuscan 202.202



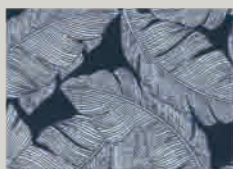
Azure 504.202



Garnet 102.202



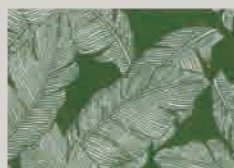
Citron 302.202



Midnight 506.202



Lakeside 502.202



Amazon 402.202



Charcoal 702.202



# Parker Stripe

20" W Repeat



Tuscan 202.201



Garnet 102.201



Citron 302.201

# Monstera

20" W Repeat



Celery 401.211



Lime 301.211



Azure 501.211



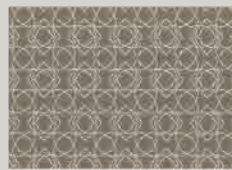
Citron 302.211



Stone 701.211

# Harley

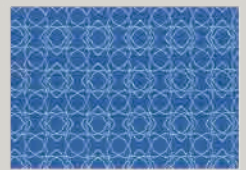
3.3" W Repeat



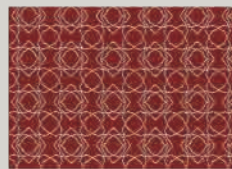
Hemp 602.205



Tuscan 202.205



Azure 504.205



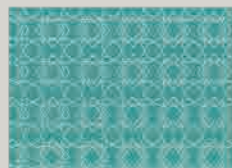
Garnet 102.205



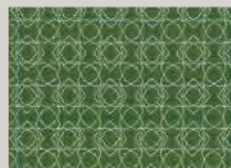
Citron 302.205



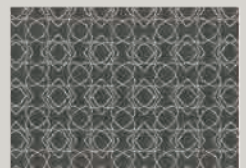
Midnight 506.205



Lakeside 502.205



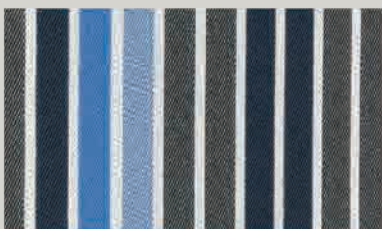
Amazon 402.205



Charcoal 702.205

# Parker Stripe

20" W Repeat



Midnight 506.201



Lakeside 502.201



Amazon 402.201

# TECHNICAL DATA

## DOBBY / 100% Olefin

DESCRIPTION	Monochrome	Alpine	Rocky Mountain	St.Tropez	Médoc	Birdeyes	Canvas
Width/cm	152	158	158	158	158	152	152
Weight/gsm±5%	240	380	315	300	210	200	175

## JACQUARD / 100% Olefin

DESCRIPTION	Nightingale	Vanity	Bean	Harley	Parker Stripe
Width/cm	152	152	152	152	152
Weight/gsm±5%	260	260	260	260	260

## JACQUARD / 100% Olefin

DESCRIPTION	Bluemoon	Fire Island	Petit Morocco	Blurkey	Marbling	Monstera
Width/cm	152	152	152	152	152	152
Weight/gsm±5%	240	240	240	240	240	240

## MACKINTOSH® SOLUTION-DYED OLEFIN

Performance Standards	Test Methodology	Specifications
Colorfastness to Light	BS EN ISO 105-B02/B04 AATCC 16E	7-8 3-4 at 1,200 hrs
Colorfastness to Crocking	BS EN ISO 105-X12 AATCC 8	Dry 4-5 Wet 4-5
Colorfastness to Washing	BS EN ISO 105-C06	4-5
Colorfastness to Chlorinated pool water	BS EN ISO 105-E03	4-5
Colorfastness to Sea water	BS EN ISO 105-E02	4-5
Seam Slippage	BS EN ISO 13936-2 ASTM D4034	pass
Tear Strength	BS EN ISO 13937-3 ASTM D2261	pass
Tensile Strength	BS EN ISO 13934-1 ASTM D5034	pass
Flammability	BS EN1021-1 CAL 117	pass
Anti-Mildew	AATCC 147	pass
Water Repellency	BS EN ISO 4920 AATCC 22	5 90
Pilling Resistance	BS EN ISO 12945-2 ASTM D3512 ASTM D4970	4-5 after 5,000 Rubs 3.0 after 30 Minutes 4-5 after 1,000 Movements
Abrasion Resistance	BS EN ISO 12947-2 ASTM D4157 ASTM D4966	Over 15,000 Cycles Over 15,000 Cycles Over 15,000 Rubs
Ultraviolet Protection Factor	AS /NZS 4399	SPF50+
Perfluorinated Chemicals Content (PFCs)	EPA 3550C	Not detected any PFCs



**axroma**  
OUTDOOR PERFORMANCE FABRICS


**TAIWAN AXROMA TECHNICAL TEXTILES CO., LTD.**

No.636 Hsi-Ping Road, Douliou City,  
Yunlin Hsien 64057, Taiwan  
T:886-5-5511008 F:886-5-5511010

**AXROMA TECHNICAL TEXTILES (LIANYUNGANG) CO., LTD.**

No.25, YuZhou Road(South), Haizhou Development Zone,  
Lianyungang City, JiangSu Province 222062 China  
T:86-518-85910058 F:86-518-85910057

 [www.axroma.com](http://www.axroma.com)

 [#axromafabrics](https://www.instagram.com/axromafabrics)