

SANS SOUCI

Projects
CATALOGUE

RESIDENTIAL

RESIDENTIAL PROJECTS

Our private space. Our home. The space where we live our everyday lives, where we seek peace, where we laugh, and where we are surrounded by the people and pieces we like most. The interior design and the lighting we choose can contribute to our well-being and allow us to feel our best. Sit back and enjoy a tour around some of the private residences we have worked on, each tailored to the individual customer's needs and tastes.

PRIVATE RESIDENCE CASABLANCA



*Casablanca,
Morocco*







PRIVATE RESIDENCE CASABLANCA

Our Bowls, Contour and Frozen collections have been meticulously integrated into every aspect of this luxurious space, creating a truly inspiring ambience that surpasses all expectations.

The Bowls collection offers a diverse range of delicate hand-blown crystal bowls, each uniquely crafted to add a touch of elegance and sophistication to any interior. The Contour collection features intricately designed lighting fixtures that effortlessly enhance the architectural contours of the space, adding depth and dimension to every corner. Lastly, the Frozen collection exudes a mesmerizing beauty with its delicate frost-like patterns and ethereal glow, transforming any room into a captivating sanctuary.





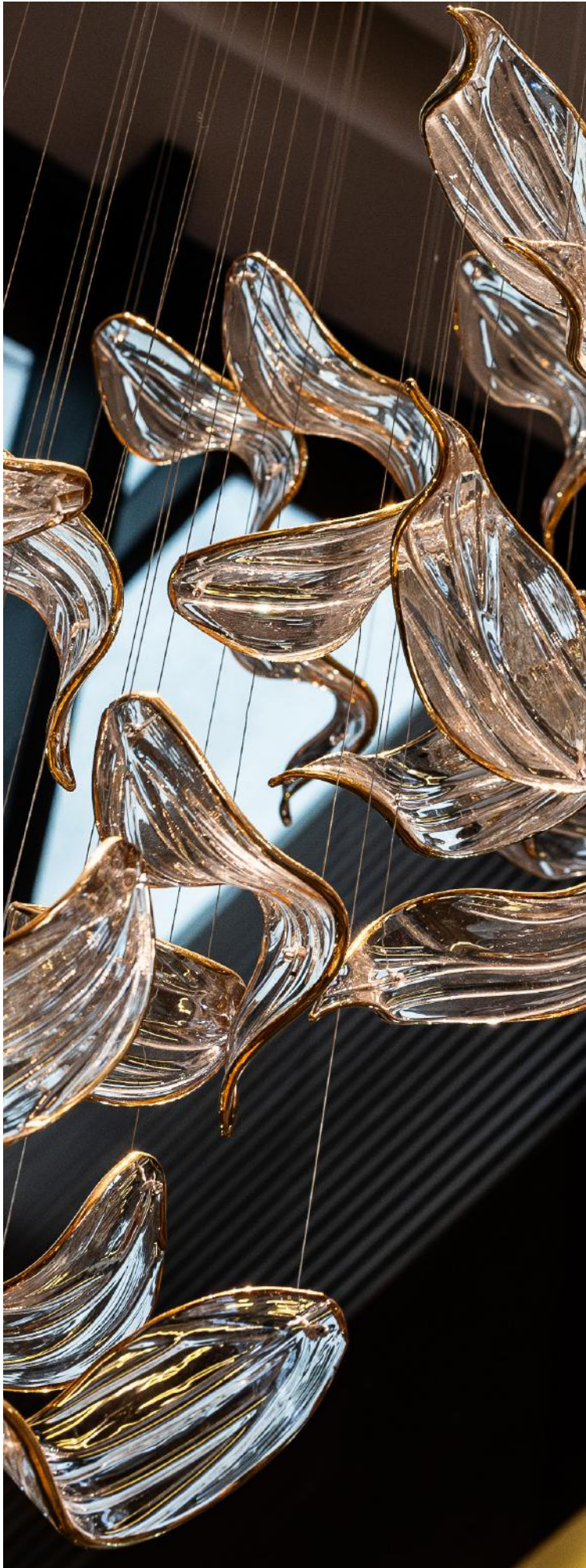
PRIVATE RESIDENCE CASABLANCA

PRIVATE RESIDENCE CASABLANCA





PRIVATE RESIDENCE CASABLANCA





THE PALM JUMEIRAH RESIDENCE



Dubai, UAE







THE PALM JUMEIRAH RESIDENCE

Located on the iconic Palm Jumeirah, this luxury private residence showcases a bespoke lighting concept designed to complement the villa's contemporary architecture and exceptional waterfront setting. Combining artistic craftsmanship with sophisticated materials and finishes, the installations create a seamless dialogue between light, space, and the surrounding environment.

The project features a collection of custom-made lighting compositions tailored to the individual character of each interior. Handcrafted glass elements, refined metal details, and bespoke finishes come together to create striking focal points throughout the residence, from grand double-height spaces to more intimate living areas. Together, the installations enhance the villa's sense of elegance and exclusivity, transforming light into an integral part of the architectural experience.





THE PALM JUMEIRAH RESIDENCE

THE PALM JUMEIRAH RESIDENCE





MEGAMENDUNG VILLA



*Jakarta,
Indonesia*







MEGAMENDUNG VILLA

This private villa in Jakarta features two custom chandeliers from Sans Souci, selected to enhance the home's warm, earthy palette and natural wood finishes. Designed by Václav Kaminský, both installations reflect his focus on organic forms and material harmony, bringing cohesion and visual balance to the residence.

In the double-height living room, the Airy collection forms a striking installation that enhances the sense of height and openness.

Inspired by gentle, free-flowing motion, the handblown components were customised in tones that harmonise with the wooden structural elements from which the chandelier is suspended. Expertly installed within the wooden structure, they seamlessly blend into the space. The design brings lightness and clarity to the room while supporting the overall architectural intent.

Above the central kitchen island, the Flying Leaves chandelier introduces a subtle flow of movement. Crafted in light amber and clear crystal with a soft mica accent, the piece complements the wooden cabinetry and surrounding materials.

MEGAMENDUNG VILLA





MEGAMENDUNG VILLA





MULBERRY HOUSE



London, UK







MULBERRY HOUSE

Created in collaboration with Hill House Interiors, Mulberry House is a celebration of artistry, craftsmanship, and contemporary luxury. Throughout the residence, a carefully curated selection of Sans Souci lighting installations transforms the interiors into an immersive composition of light, texture, and movement, enhancing the home's refined character.

At the heart of the project is the Flamenco collection, whose hand-blown crystal elements with a smoky ombré effect evoke the energy and grace of the Andalusian dance that inspired its design. Complementing this dynamic centerpiece is the Frozen collection, where cascading crystal petals create the delicate impression of flowers touched by the first frost. Completing the composition, the Vine collection crowns the interiors with hand-cut crystal leaves inspired by organic forms found in nature, bringing a timeless elegance and sculptural presence to this exceptional London residence.

MULBERRY HOUSE





MULBERRY HOUSE





DUBAI HILLS ESTATE VILLA



Dubai, UAE







DUBAI HILLS ESTATE VILLA

Located within one of Dubai's most prestigious residential communities, this exceptional private villa features a series of eight bespoke lighting installations that elevate the interiors through a harmonious blend of art, craftsmanship, and architectural design. Created to complement the residence's luxurious character, each installation contributes to a carefully choreographed journey of light and reflection throughout the home.

The project showcases a diverse range of Sans Souci collections and custom compositions, each tailored to its setting. From sculptural statement pieces that define key living spaces to delicate installations that enhance circulation areas, the designs combine hand-crafted crystal, sophisticated finishes, and intricate detailing to create a cohesive visual narrative. Together, the eight installations transform the villa into an immersive environment where light becomes an integral part of the architectural experience.





DUBAI HILLS ESTATE VILLA

DUBAI HILLS ESTATE VILLA







DUBAI HILLS ESTATE VILLA



DUBAI HILLS ESTATE VILLA









DUBAI HILLS ESTATE VILLA



DUBAI HILLS ESTATE VILLA



DUBAI HILLS ESTATE VILLA





ORLANDO VILLA

Los Angeles, USA







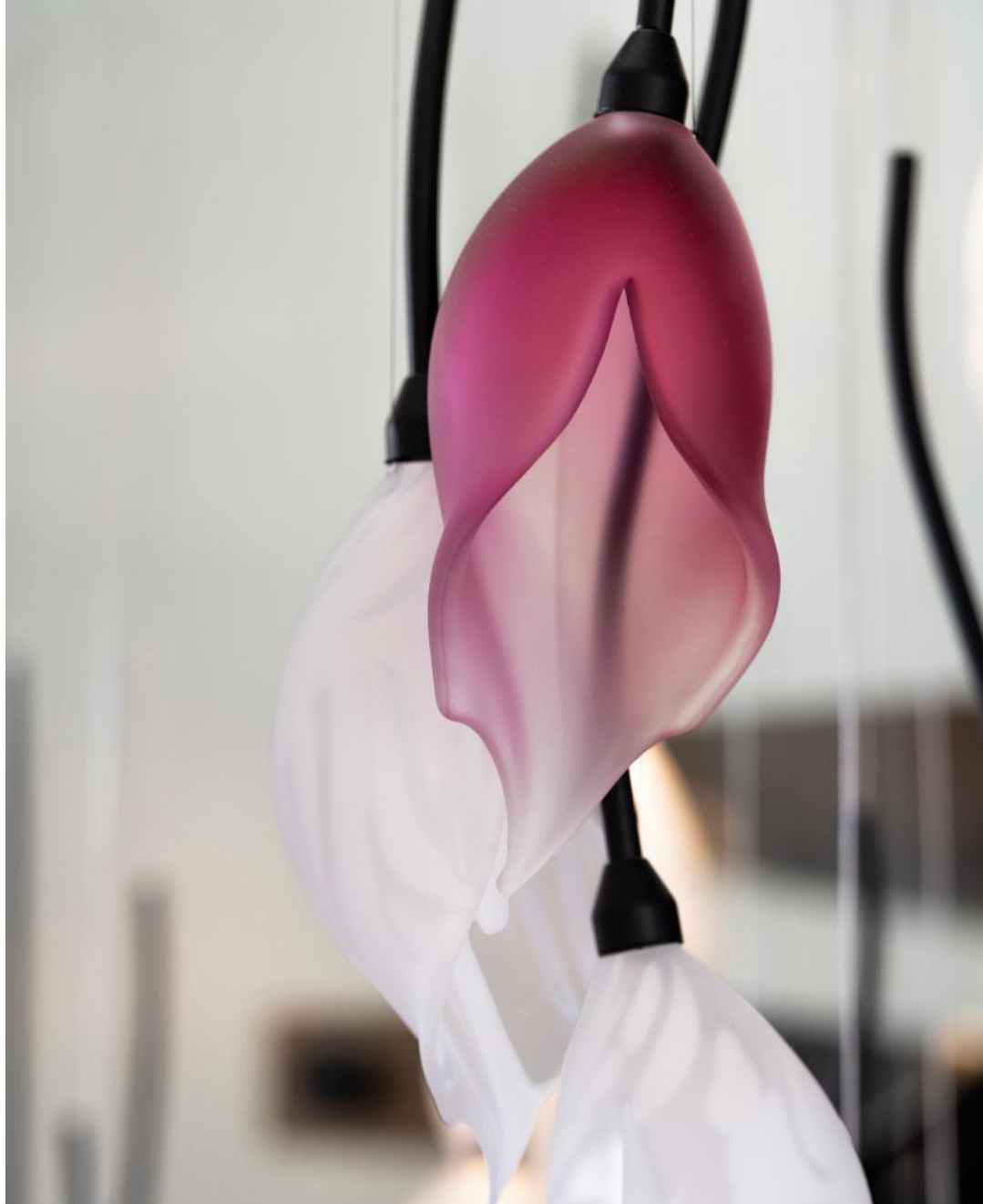
ORLANDO VILLA

This West Hollywood residence, designed by Brana Design, was conceived as a fusion of artistry and luxury. A soft ivory and grey palette forms the foundation, punctuated by fuchsia accents and a sense of considered abundance.

For Orlando Villa, we developed a bespoke installation from our Lily collection – a multi-storey chandelier spanning over seven metres in height. Each element is a handblown glass petal, sandblasted to diffuse light softly and evenly, finished in a combination of opal mist, lilac mist, and crystal beads.

Individually, each bloom reads as a delicate, organic form. Together, arranged on a contrasting matt black stem, they compose a single monumental bouquet that crowns the interior from floor to ceiling.





ORLANDO VILLA

RAJAPUSHPA VILLA



*Hyderabad,
India*







RAJAPUSHPA VILLA

Designed for a private villa in Hyderabad, the lighting concept centres around a bespoke Aurora installation that brings a sense of wonder and elegance to the living space. Inspired by the mesmerising natural phenomenon of the Northern Lights, the composition transforms the interior into a celestial landscape where light, glass, and reflection interact in a dynamic and captivating display.

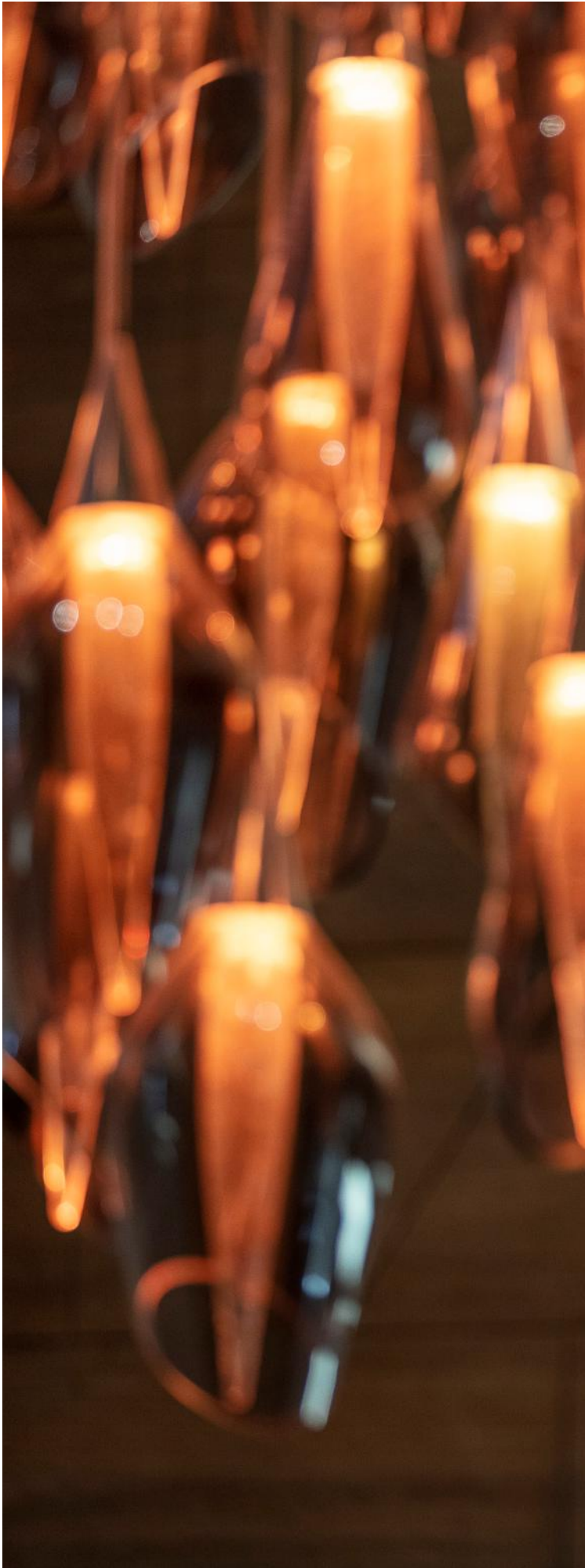
The installation consists of handblown crystal pendants, each formed by a crystal-clear glass drop with a distinctive soda effect, paired with a crystal-clear cap finished in silver nanocoating. Arranged in a flowing composition, the elements evoke the movement and luminosity of the aurora, creating a sculptural focal point that enhances the villa's contemporary architecture while showcasing the artistry of Czech glassmaking.





RAJAPUSHPA VILLA

RAJAPUSHPA VILLA





**BVLGARI RESIDENCES
– THE SHADOW BOX
PENTHOUSE**

Dubai, UAE







BVLGARI RESIDENCES - THE SHADOW BOX PENTHOUSE

A shimmering jewel set on a seahorse-shaped island in Jumeirah Bay, the Bvlgari Resort brings Mediterranean style to Dubai.

To complete the Bvlgari Island experience, we have contributed our state-of-art luxury lighting installation inside two of the mansions and in the residential complex.

The Shadow Box Penthouse at the Bvlgari Residences has a particular free-spirited feel that changes constantly depending on the time of the day, month, or year, due to the shadows created by mobile mesh screens. To encourage this artful play of light, we created a colourful hand-blown crystal glass installation in rich cobalt and amber hues combined with metal lanterns reminiscent of old market finds to complete the bohemian touch.





**BVLGARI RESIDENCES
- THE SHADOW BOX PENTHOUSE**

LUXEMBOURG PRIVATE RESIDENCE



Luxembourg, EU







LUXEMBOURG PRIVATE RESIDENCE

A new private residence in Luxembourg called for lighting that would feel both sculptural and deeply personal. For this project, we designed a trio of bespoke installations that infuse light and story throughout the interiors. The result is a home where every room has its own identity yet flows seamlessly into the next – unified by craftsmanship, Bohemian crystal, and contemporary elegance.

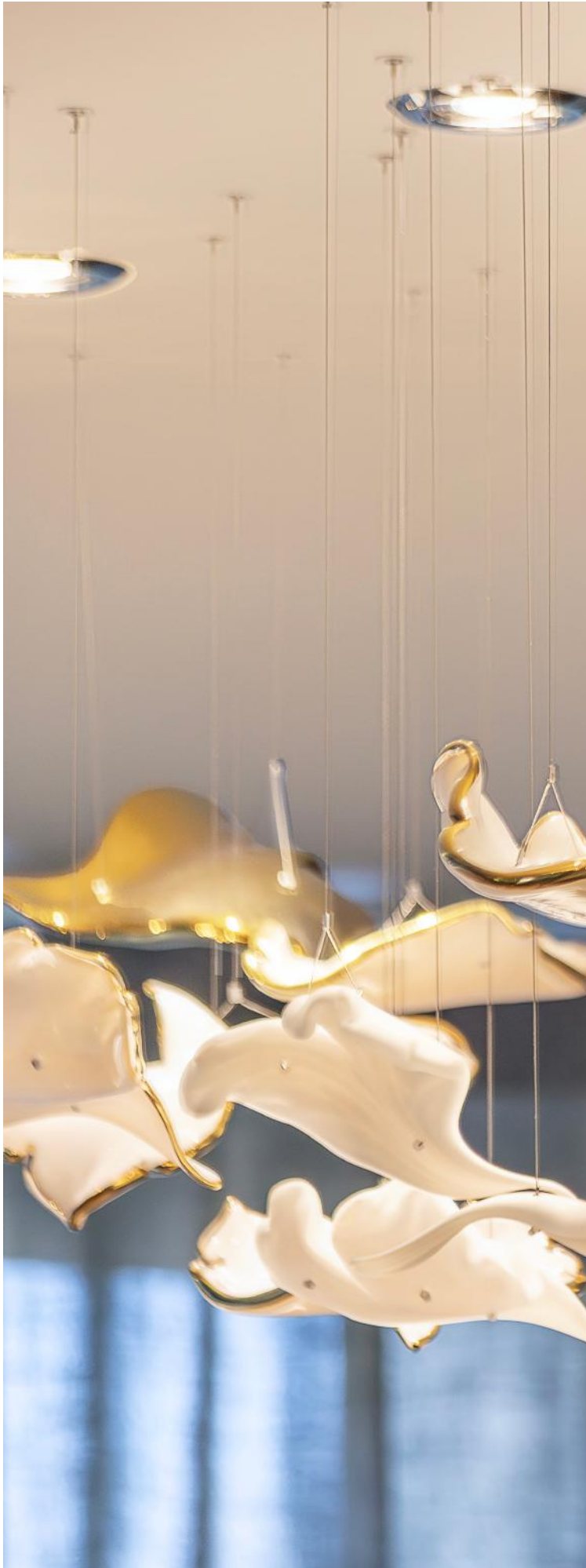
The dining area is defined by a bespoke composition featuring handblown glass elements in opal and aurum finishes inspired by the property's Ginkgo Biloba tree, creating a seamless connection between indoors and outdoors. In the living and circulation spaces, the Charm pendants introduce a contemporary touch through reflective nanocoated glass spheres that interact dynamically with light and their surroundings.

LUXEMBOURG PRIVATE
RESIDENCE





LUXEMBOURG PRIVATE
RESIDENCE





AVENUE ROAD RESIDENCE



London, UK







AVENUE ROAD RESIDENCE

Located on one of London's most prestigious residential addresses, Avenue Road Residence is a showcase of bespoke craftsmanship and contemporary luxury. Designed by HBA London and delivered in collaboration with LXA Projects, the residence features a curated collection of custom lighting installations by Sans Souci, each tailored to complement the character of its setting.

The journey begins with the Frozen chandelier in the entrance hall, where gilded crystal petals create a striking first impression. In the dining room, the Contour chandelier enhances the interplay of natural and artificial light through its elegant glass leaves and subtle ombré effect. The living room is defined by a bespoke slumped glass installation with textured surfaces and antique brushed bronze details, while the swimming pool area features a custom composition inspired by the fluid movement of water, seamlessly connecting reflections, glass, and cascading flows into a tranquil immersive experience.

AVENUE ROAD RESIDENCE

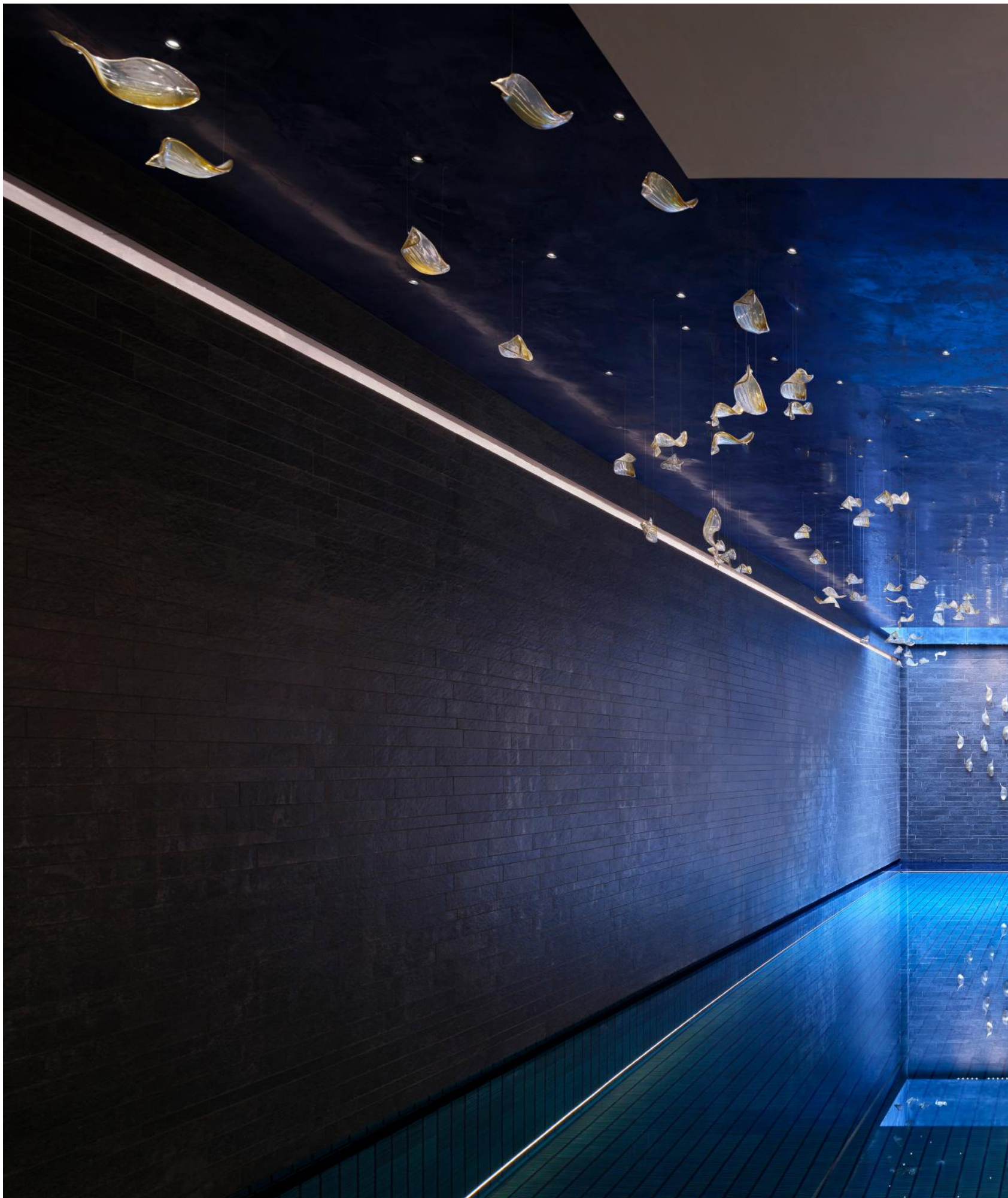




AVENUE ROAD RESIDENCE







AVENUE ROAD RESIDENCE



**MRS. IN'S HOUSE,
JAKARTA**



*Jakarta,
Indonesia*







MRS. IN'S HOUSE, JAKARTA

For this private villa in Jakarta, Sans Souci delivered two custom lighting installations designed to enhance the interior and support the architectural vision. Both pieces were created and curated by Radek Brezar and integrated into interiors designed by Bottega & Artisan to ensure a cohesive and balanced result.

At the entrance, the Frozen chandelier introduces a clean and refined aesthetic. Made from clear crystal with a gilded edge finish, it provides a subtle yet impactful focal point. Its sculptural form reflects light and adds a touch of understated luxury to the arrival experience.

Above the dining table, the Loops chandelier adds depth and visual interest to the space. The custom components, finished in gold and silver nanocoating, offer gentle reflections that improve the overall ambience. The design was carefully composed to suit the interior style and complement the dining area layout.

MRS. IN'S HOUSE, JAKARTA









MRS. IN'S HOUSE, JAKARTA

PALM BEACH OCEAN VIEW



Florida, USA







PALM BEACH OCEAN VIEW

Overlooking the Atlantic Ocean, this private residence in Palm Beach was designed to celebrate its exceptional coastal setting through light, transparency, and movement. The bespoke lighting concept by Sans Souci introduces sculptural glass compositions that enhance the home's contemporary architecture while reflecting the changing colours and atmosphere of the ocean beyond.

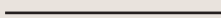
The project features custom-made installations crafted from handblown glass elements, carefully arranged to create a sense of fluidity and organic motion throughout the interior. Combining refined finishes, artisanal craftsmanship, and a strong connection to the surrounding landscape, the lighting becomes an integral part of the residence, bringing elegance, depth, and a subtle sense of coastal luxury to every space.





PALM BEACH OCEAN VIEW

PRIVATE VILLA SHARJAH



Sharjah, UAE







PRIVATE VILLA SHARJAH

Created in collaboration with ELE Interiors, this luxurious private residence in Sharjah showcases a collection of bespoke lighting installations designed to complement the villa's contemporary architecture and refined interiors.

Drawing inspiration from both nature and traditional Middle Eastern motifs, the designs combine crystal, cognac, and golden hues to create a warm and sophisticated atmosphere throughout the home.

The project features customised interpretations of Sans Souci's signature Kerchiefs, Pebbles, and Vice Versa collections, with specially selected formations, colours, and nanocoated finishes tailored to the space. These are complemented by three entirely original bespoke designs, including a striking centrepiece inspired by leaves carried by the wind. Together, the installations guide visitors through the residence, creating a cohesive visual journey that plays with light, movement, and reflection while enhancing the villa's elegant character.

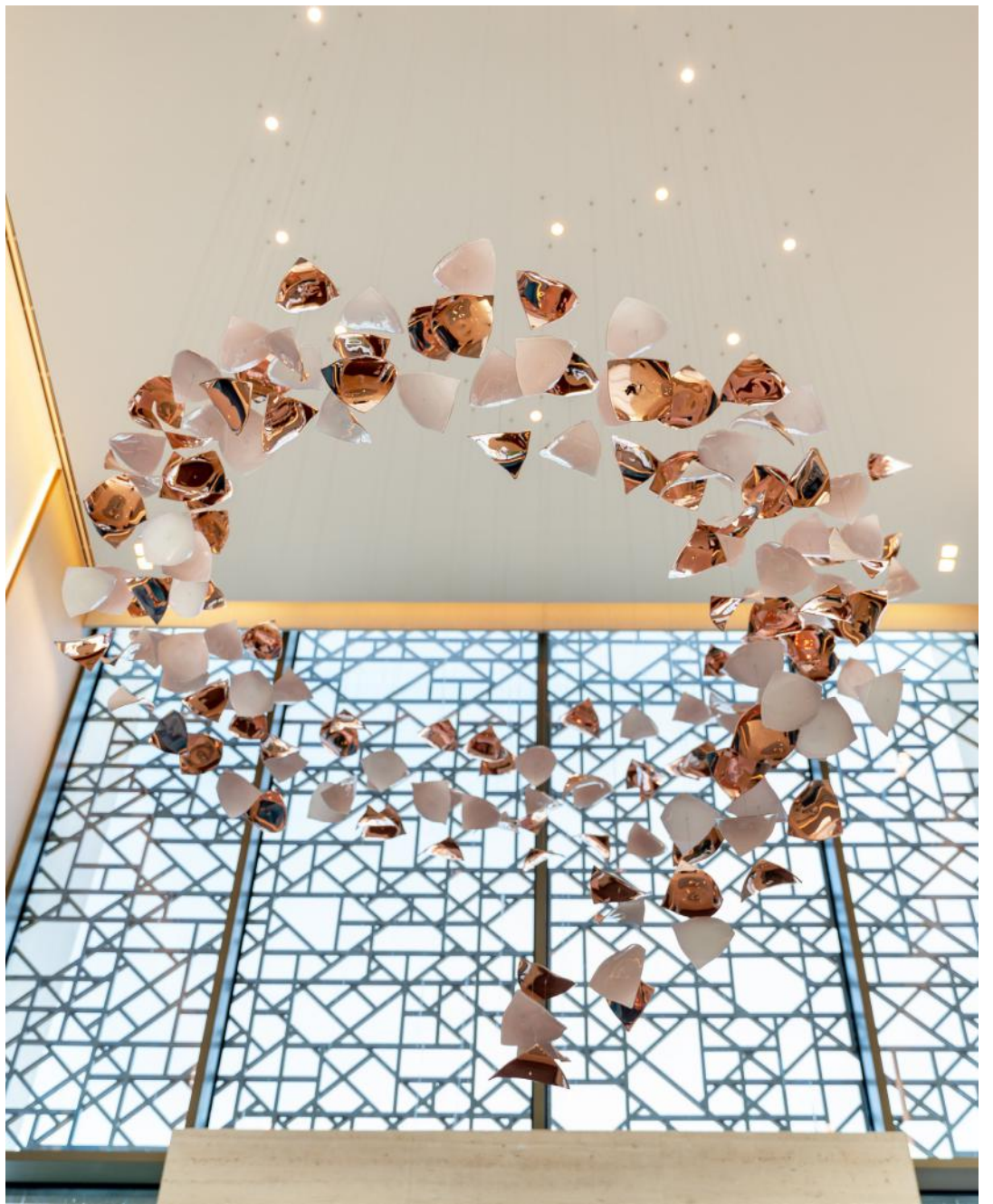




PRIVATE VILLA SHARJAH



PRIVATE VILLA SHARJAH



PRIVATE VILLA SHARJAH









PRIVATE VILLA SHARJAH



PRIVATE VILLA SHARJAH



PRIVATE VILLA SHARJAH





PRIVATE VILLA SHARJAH





9 MILLBANK



London, UK







9 MILLBANK

The Gainsborough is the latest luxury Thameside apartment at the 9 Millbank development in London. This stunning private residence is named after Thomas Gainsborough – one of the most prominent artists of the 18th century – and has décor worthy of its namesake, designed by esteemed interior designer Katherine Pooley.

Pooley's vision combines flawless design with historic detailing. We specially created a series of bespoke lighting installations for the living and dining areas, inspired by our Primavera collection. These striking pieces feature handblown crystal petals with metallic finish, artfully arranged to hang from branch-like lighting.









PRIVATE VILLA ABU DHABI



Abu Dhabi, UAE







PRIVATE VILLA ABU DHABI

Developed in collaboration with Insignia Design Consulting, this luxury private residence in Abu Dhabi features a collection of bespoke lighting installations designed to enhance the villa's contemporary interiors through light, transparency, and movement. Combining original concepts with customised interpretations of existing collections, the project showcases the versatility of handcrafted glass and tailored design.

The dining area is crowned by a bespoke installation composed of hand-blown glass spheres and leaves in a variety of sizes, colours, and finishes, including clear, sandblasted, and soda-effect glass. In the entrance lobby, a sculptural composition of illuminated glass bubbles ascends through the stairwell, accentuating the height and openness of the space. Completing the project is a customised version of the Bowls collection, crafted in opal glass with Aurum nanocoating, bringing a sense of elegance and sophistication to the villa's refined interior design.

PRIVATE VILLA ABU DHABI









PRIVATE VILLA ABU DHABI

PRIVATE VILLA ABU DHABI



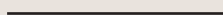


PRIVATE VILLA ABU DHABI





VILLA ROMA



Rome, Italy







VILLA ROMA

For Villa Roma, we developed two signature lighting installations for a private residence in Rome. The interiors are soft and curated – a setting that called for pieces with genuine artistic presence rather than decorative afterthought.

In the dining room, we introduced a customised version of Flamenco – a collection that draws from the energy and form of Andalusian dance. Handblown pieces in crystal with soda, light amber, and light tobacco hues are arranged in a dynamic composition.

In the living room, the Contour installation, rendered in crystal clear and opal mist, is designed around the interplay of light and silhouette. The gilded finish catches both daylight and ambient light with subtlety, tracing the organic outline of each piece rather than announcing it.

VILLA ROMA





SANS SOUCI

Sans Souci *Projects Catalogue* – Residential
Copyright © Sans Souci 2026

www.sanssoucilighting.com