



**Sakeenah
Saleem**



Portfolio

A brief collection of works.

**I hope my work portrays the belief that
each project is a chance to grow upon
previous knowledge and experiences
and ultimately surprise yourself.**

NYC • ATL

678 938 6876

sakeenahsal@gmail.com

sakeenahsaleem.com

@sakeenah_saleem



Photography

04 Architecture & Interiors

24 Headshots

26 Lifestyle & Commissioned Work



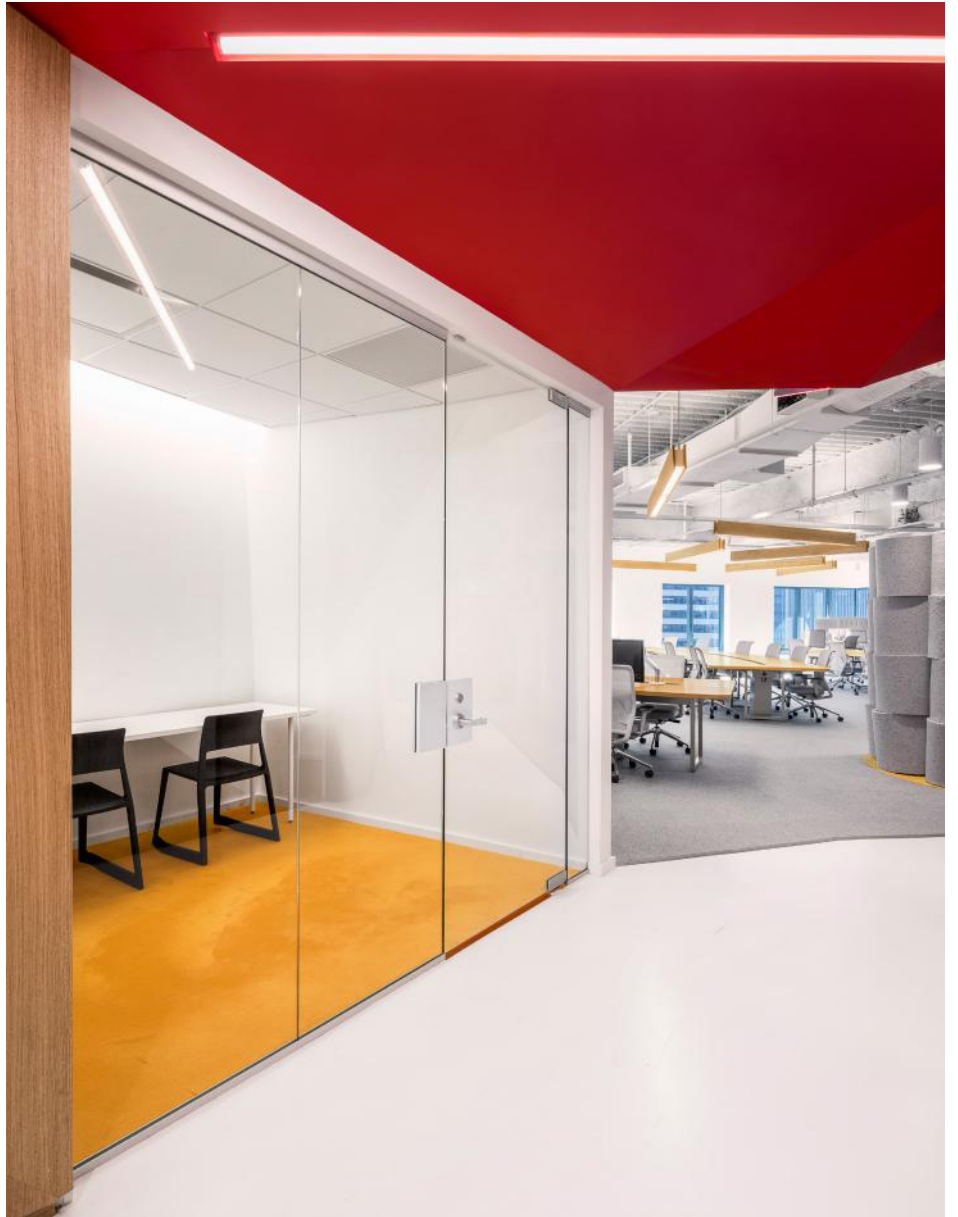
Primary Equipment:

- Canon EOS 5D Mark III
- Canon EOS R5
- Manfrotto Tripod w/ Arca-Swiss Geared Head
- CamRanger 2 (for wireless tethering)
- Canon Tilt-Shift Lenses: 17mm, 24mm
- Canon Primes: 50mm, 80mm



Publicis Corporate Office (NYC)

Highlights • Interior photography for Arenson Office Furnishings. Led shoot planning, execution, and post-production. Coordinated with third-party consultants to secure licensing agreements and manage image usage rights across project partners.



Publicis Corporate Office (NYC)

Highlights • Interior photography for Arenson Office Furnishings. Led shoot planning, execution, and post-production. Coordinated with third-party consultants to secure licensing agreements and manage image usage rights across project partners.



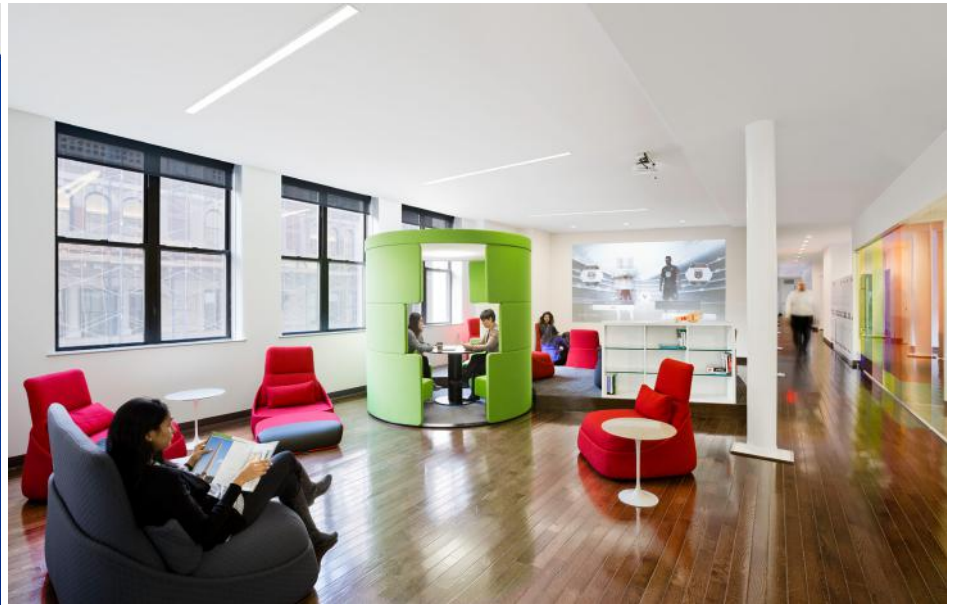
Publicis Corporate Office (NYC)

Highlights • Interior photography for Arenson Office Furnishings. Led shoot planning, execution, and post-production. Coordinated with third-party consultants to secure licensing agreements and manage image usage rights across project partners.



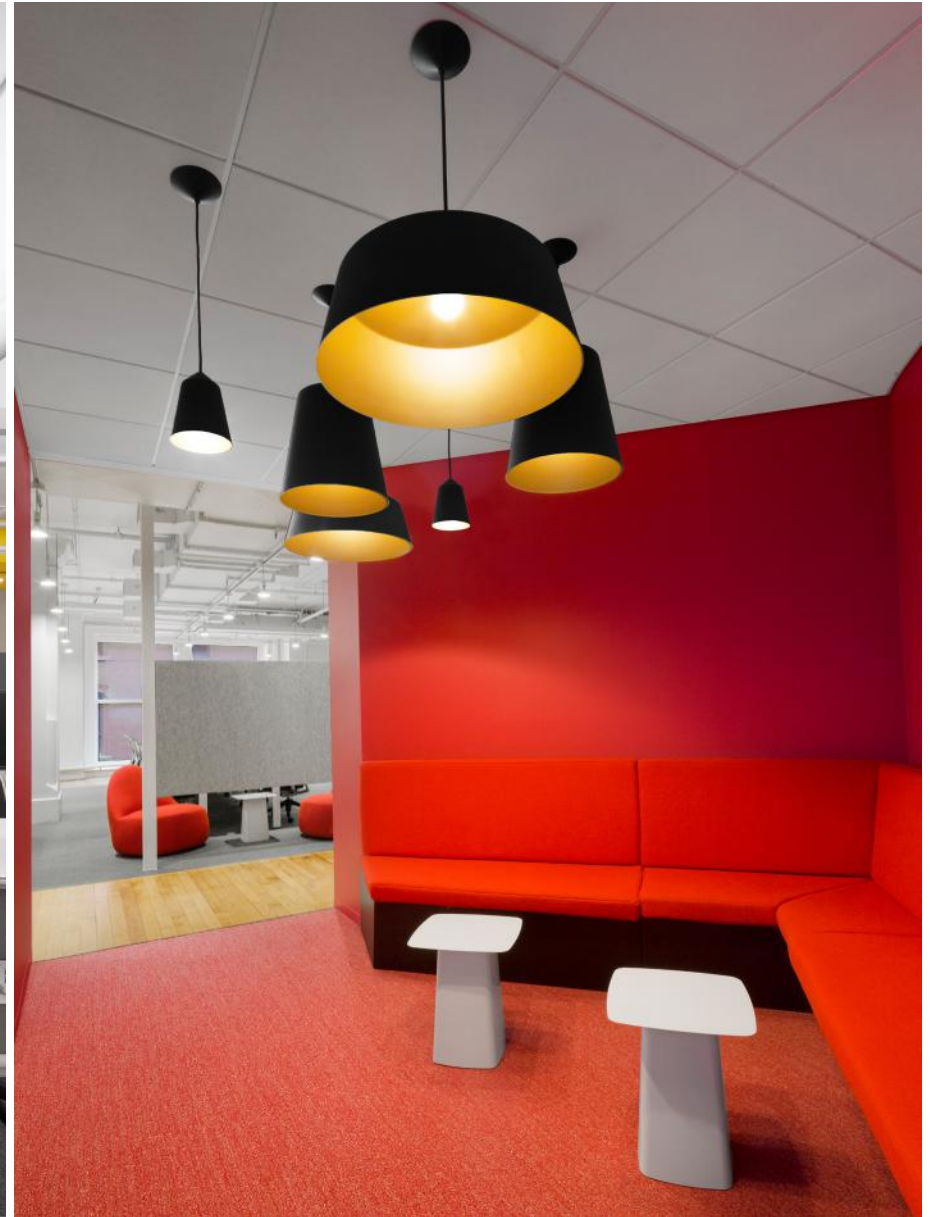
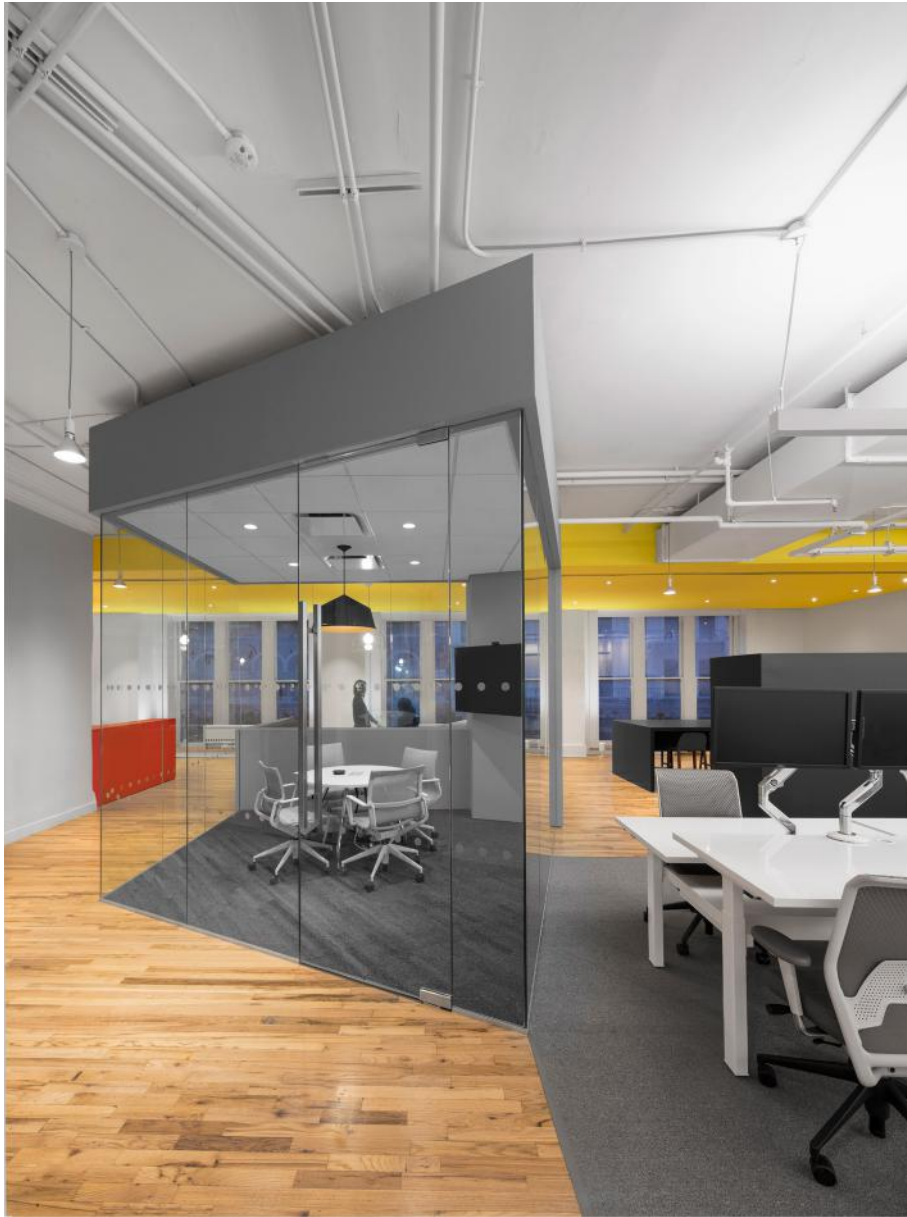
Publicis Corporate Office (NYC)

Highlights • Interior photography for Arenson Office Furnishings. Led shoot planning, execution, and post-production. Coordinated with third-party consultants to secure licensing agreements and manage image usage rights across project partners.



Dailymotion Corporate Office (NYC)

Highlights • Interior photography for Matiz Architecture & Design (MAD), in collaboration with Arenson. Worked closely with the architect to plan and direct the shoot, establishing image licensing and usage agreements to support both firms' marketing and portfolio needs.



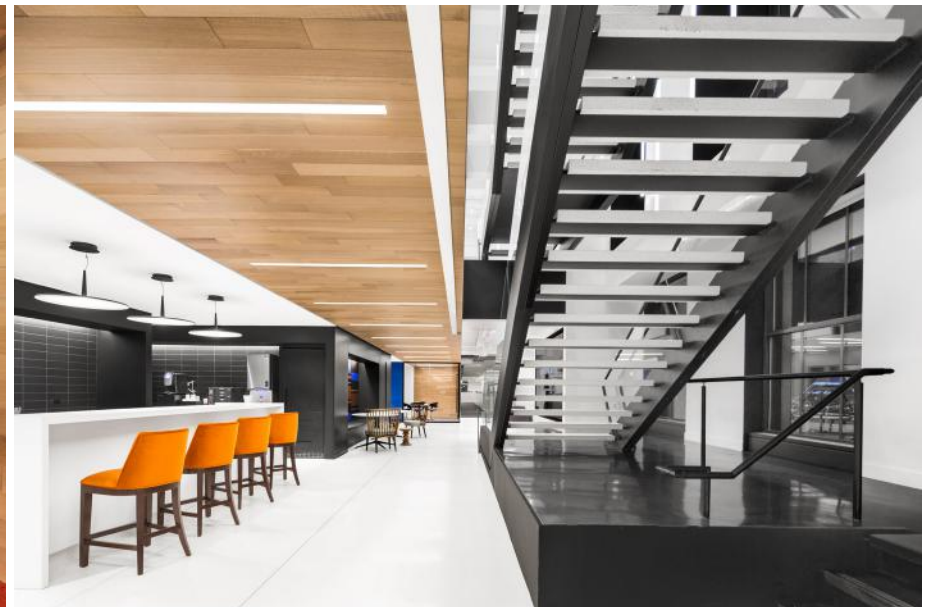
Zocdoc Offices (NYC)

Highlights • Interior photography for CWA Architects. Worked closely with the architect to plan and direct the shoot, establishing image licensing and usage agreements.



Top: Univision (Miami) • Bottom: Real Estate Client Corporate Office (NYC)

Highlights • Interior photography for Arenson. Led shoot planning, execution, and post-production. Coordinated with third-party consultants to secure licensing agreements and manage image usage rights across project partners.



Sony Headquarters (NYC)

Highlights • Interior photography for Arenson. Phased shot-list that coincided with phased completion of this 11-story 570,000 sf project. Led shoot planning, execution, and post-production. Coordinated with third-party consultants to secure licensing agreements and manage image usage rights across project partners.



Grace Farms (New Haven, CT)

Highlights • Interior photography for Arenson Office Furnishings. Led shoot planning, execution, and post-production.



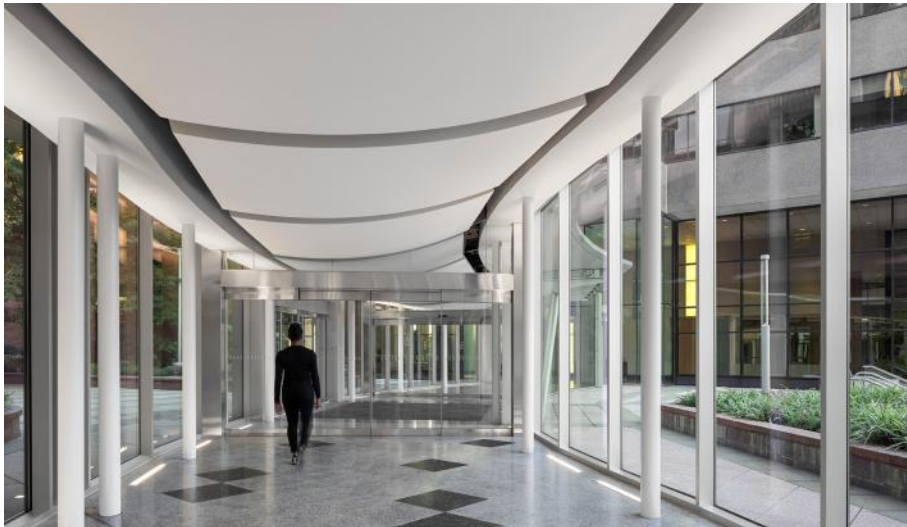
Grace Farms (New Haven, CT)

Highlights • Interior photography for Arenson Office Furnishings. Led shoot planning, execution, and post-production.



Landmark Square Connector (Stamford, CT)

Highlights • Served as lead photographer for this Perkins Eastman project. Led shoot planning, execution, and post-production.



Landmark Square Connector (Stamford, CT)

Highlights • Served as lead photographer for this Perkins Eastman project. Led shoot planning, execution, and post-production.



Pickwick Plaza (Greenwich, CT)

Highlights • Served as lead photographer for this Perkins Eastman project. Led shoot planning, execution, and post-production.



Pickwick Plaza (Greenwich, CT)

Highlights • Served as lead photographer for this Perkins Eastman project. Led shoot planning, execution, and post-production.



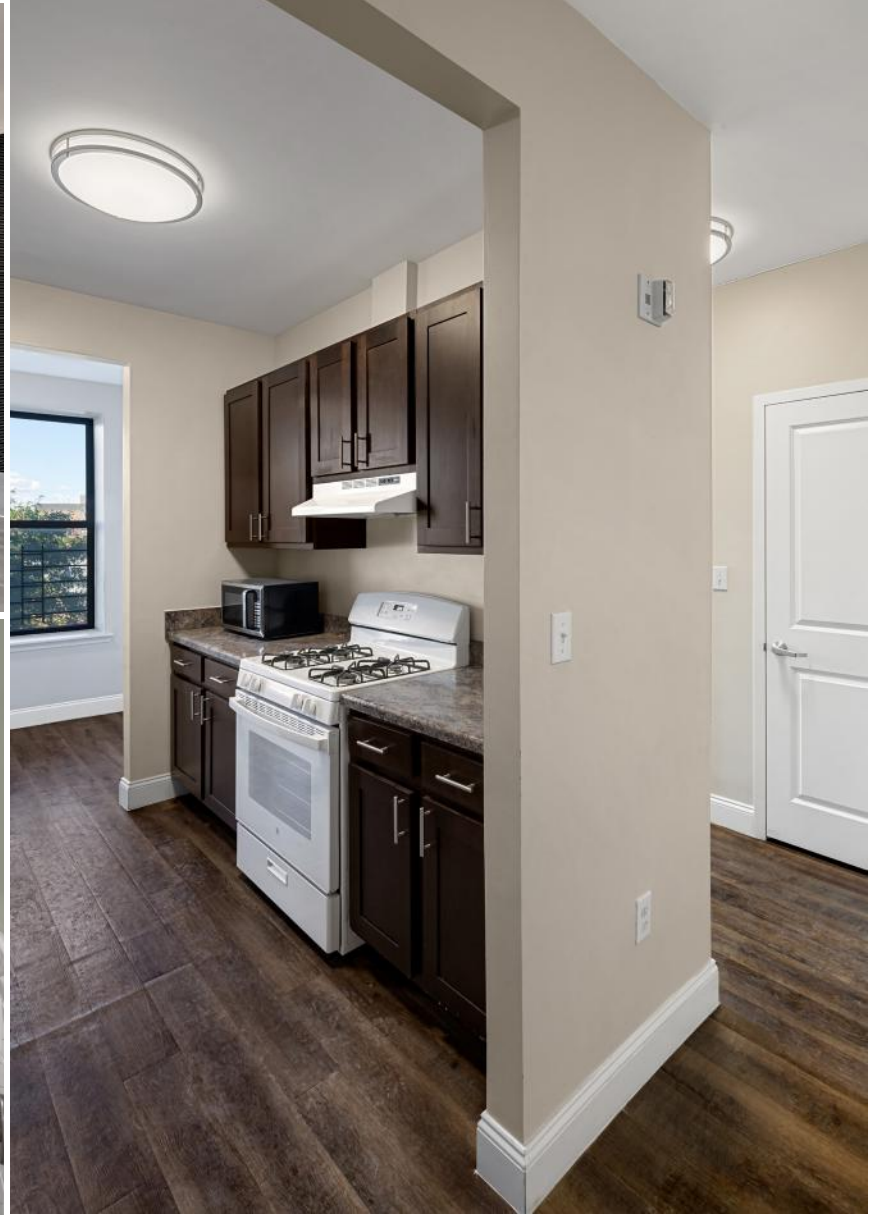
Multi-Family - New Construction (New York, NY)

Highlights • Exterior photography for SLM Architecture. Led shoot planning, execution, and post-production.



Multi-Family - Extensive Rehabilitation (Brooklyn and New York, NY)

Highlights • Exterior photography for SLM Architecture. Led shoot planning, execution, and post-production.



Multi-Family - Extensive Rehabilitation (Queens, NY)
Highlights • Interior photography for SLM Architecture. Led shoot planning, execution, and post-production.

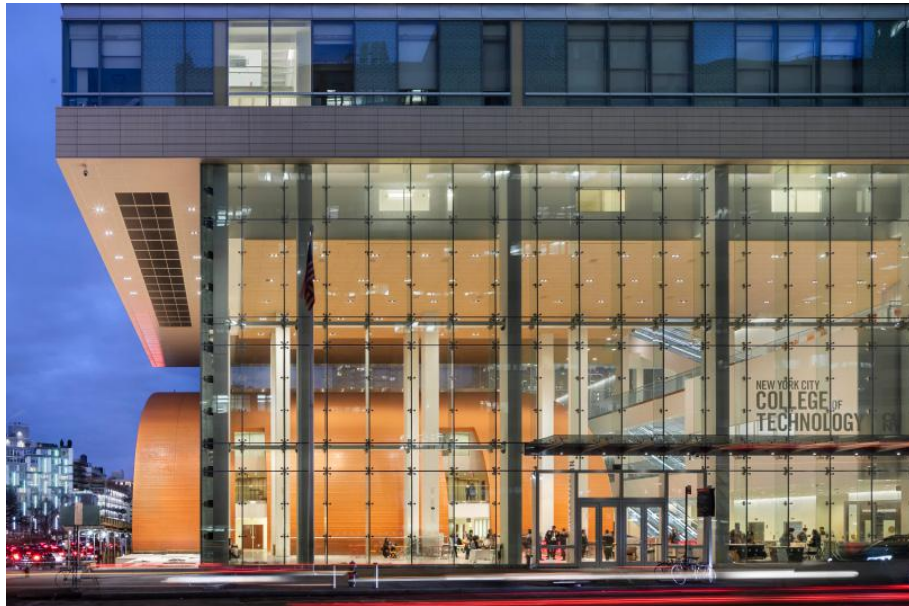


Multi-Family - Extensive Rehabilitation (Bronx, NY)

Highlights • Interior photography for SLM Architecture. Led shoot planning, execution, and post-production.



Private Residence (Brooklyn, NY)
Highlights • Interior photography for private client.



(Photographed by Others)

Highlights • Left: Before & after retouching sample. Right: Served as photography assistant & assisted in directing. (Right)



Corporate Headshots

Highlights • Various headshots in multiple office across the U.S.



Corporate Headshots

Highlights • Various headshots in multiple office across the U.S.



Lifestyle & Studio Photography
Highlights • Staff Photographer & Commissioned Work



Lifestyle & Studio Photography
Highlights • Staff Photographer



Lifestyle & Studio Photography
Highlights • Commissioned Work



Lifestyle & Studio Photography
Highlights • Commissioned Work



**Sakeenah
Saleem**

•
Portfolio

**Thank you for considering me for this
role as a Real Estate Photographer.**

•
Connect.

678 938 6876
sakeenahsal@gmail.com

•
Explore More.

sakeenahsaleem.com
@sakeenahsaleem