



LIVE | WORK | PLAY

A Modern lifestyle at
affordable prices

PRICE LIST

www.tafagriclobal.com

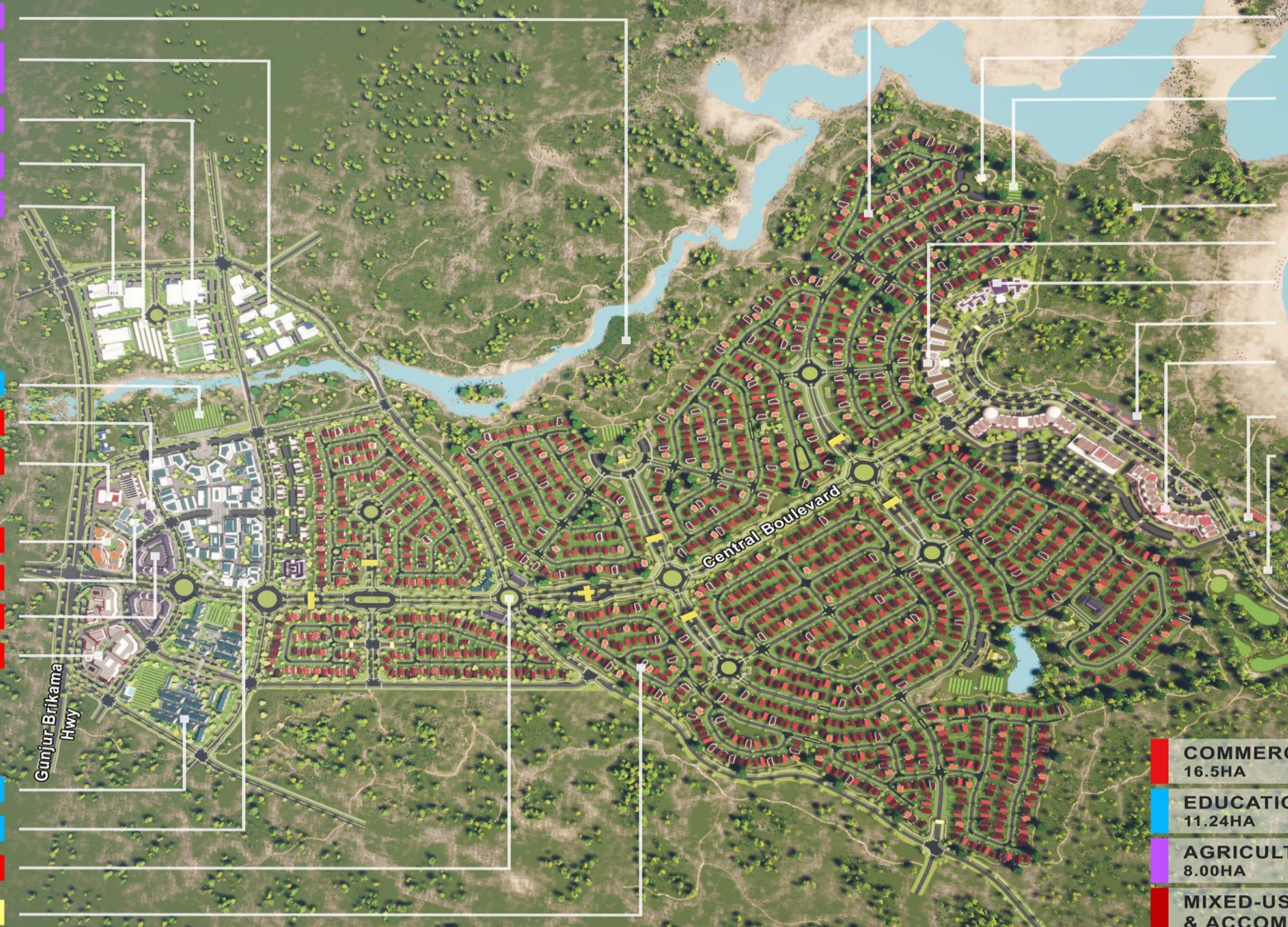
MASTER PLAN

- Aquaculture Farms
- Agricultural Research + Development
- Horticulture Gardens
- Hydroponics Greenhouses
- Showrooms + Warehouses

- Sport
- Police + Fire Services
- Petrol Filling Station

- Offices + Administration
- Health Clinic
- Multi-Transit Hub
- Shops, Market + Businesses

- Senior + Primary Schools
- University + Vocational Training
- Central Community Node
- Residential Housing



- Residential Housing
- Clubhouse
- Park | Sport

- River + Beach Activities
- Hotel
- Wellness Centre
- Riverside Promenade
- Mixed-Use Entertainment + Restaurants + Apartments
- Fun Fair
- Recreation & Golf

Allahain River

Central Boulevard

Gunjur-Brikama Hwy

COMMERCIAL BUSINESS ZONE	16.5HA
EDUCATION + TRAINING ZONE	11.24HA
AGRICULTURE + WAREHOUSE ZONE	8.00HA
MIXED-USE ENTERTAINMENT, RECREATION & ACCOMMODATION ZONE	16.5HA
RESIDENTIAL ZONE	106.12HA

BENNA ESTATE SITE PLAN



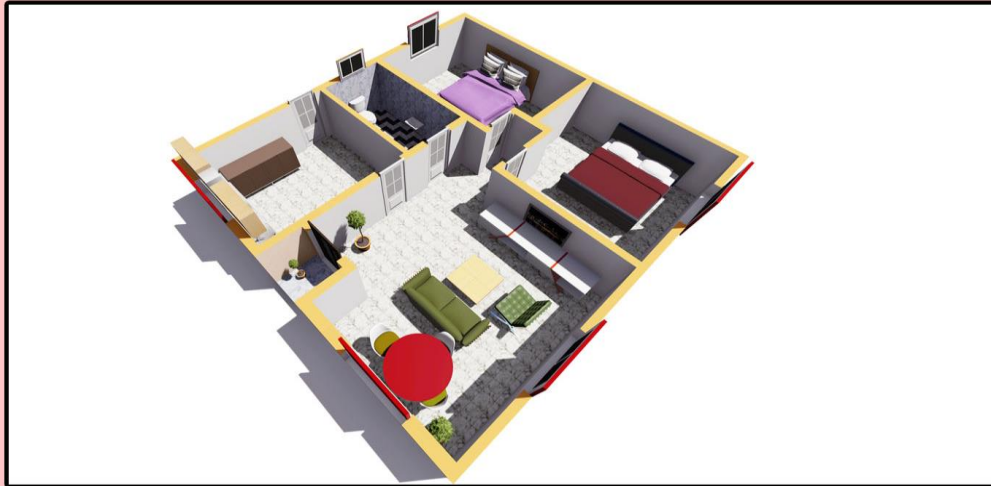
Facilities

- Shopping Center
 - Petrol Station
 - Market / shops / Restaurants
 - Offics / Businesses
 - Education
 - Kindergarten
 - Lower & Middle School
 - High School
 - University
 - Vocational School
 - Sports Facility & Gym
- Transit Center
 - Institution / Government
 - Industrial / Logistics
 - Agricultural
 - Boutique hotel
 - Student Accommodation
 - Parks/Open space
 - Residential Estate
 - Affordable Housing
 - Luxury Villas
 - Retirement Village



2 BEDROOM bungalow 49 SQM

MARIATOU



- 2 BEDROOMS
- BATHS: 2
- LIVING ROOM: 1
- KITCHEN: 1 PARTLY FITTED
- DINNING AREA

PRICE LIST

Plot Number	Plot Size (sqm)	49m2 - 2 bed		
		Price (GMD)	25%	Est. Monthly Repayment
BN 148	178.5	D2,314,065	D578,516	D25,914
BN 145	180.8	D2,320,516	D580,129	D25,986
BN 157	187	D2,337,907	D584,477	D26,181
BN 146 /147	187.5	D2,339,310	D584,827	D26,196
BN 147	187.5	D2,339,310	D584,827	D26,196
BN 143	190.5	D2,347,725	D586,931	D26,291
BN 144	192	D2,351,932	D587,983	D26,338
BN 158	202	D2,379,982	D594,996	D26,652
BN 156	265	D2,556,697	D639,174	D28,631
BN 122	279	D2,595,967	D648,992	D29,070
BN 155	292	D2,632,432	D658,108	D29,479
BN 100	312	D2,688,532	D672,133	D30,107
BN 139 - 142	312.5	D2,689,935	D672,484	D30,123
BN 101	324	D2,722,192	D680,548	D30,484
BN 124 & 125	332	D2,744,632	D686,158	D30,735
BN 130 & 131	342	D2,772,682	D693,171	D31,049
BN 121	344.8	D2,780,536	D695,134	D31,137
BN 112	346	D2,783,902	D695,976	D31,175
BN 129	352	D2,800,732	D700,183	D31,363
BN 114	363	D2,831,587	D707,897	D31,709
BN 151 & 153	369	D2,848,417	D712,104	D31,897
BN 149	370	D2,851,222	D712,806	D31,929
BN 150	372	D2,856,832	D714,208	D31,992
BN 152	374	D2,862,442	D715,611	D32,055
BN 106 - 120	375	D2,865,247	D716,312	D32,086
BN 154	376	D2,868,052	D717,013	D32,117
BN 113	380.8	D2,881,516	D720,379	D32,268
BN 137	383.5	D2,889,090	D722,272	D32,353
BN 138	383.7	D2,889,651	D722,413	D32,359
BN 136	384.9	D2,893,017	D723,254	D32,397
BN 135	385	D2,893,297	D723,324	D32,400
BN 134	386	D2,896,102	D724,026	D32,431
BN 133	387	D2,898,907	D724,727	D32,463
BN 132	387.9	D2,901,432	D725,358	D32,491
BN 128	403.8	D2,946,031	D736,508	D32,991
BN 127	413	D2,971,837	D742,959	D33,280
BN 126	415	D2,977,447	D744,362	D33,342
BN 102	430	D3,019,522	D754,881	D33,814
BN 103	435	D3,033,547	D758,387	D33,971
BN 105	440	D3,047,572	D761,893	D34,128
BN 123	500	D3,215,872	D803,968	D36,012
BN 104	514	D3,255,142	D813,786	D36,452

2 BEDROOM bungalow 68 SQM

HAJA



- 2 BEDROOMS
- BATHS:2
- LIVING ROOM: 1
- KITCHEN: 1 PARTLY FITTED
- DINNING AREA

PRICE LIST

		2 Bed Haja - 68m2		
Plot Number	Plot Size (sqm)	Price (GMD)	25%	Est. Monthly Repayment
BN 148	178.5	D2,614,857	D653,714	D29,282
BN 145	180.8	D2,621,309	D655,327	D29,354
BN 157	187	D2,638,700	D659,675	D29,549
BN 146 /147	187.5	D2,640,102	D660,026	D29,565
BN 147	187.5	D2,640,102	D660,026	D29,565
BN 143	190.5	D2,648,517	D662,129	D29,659
BN 144	192	D2,652,725	D663,181	D29,706
BN 158	202	D2,680,775	D670,194	D30,020
BN 156	265	D2,857,490	D714,372	D31,999
BN 122	279	D2,896,760	D724,190	D32,439
BN 155	292	D2,933,225	D733,306	D32,847
BN 100	312	D2,989,325	D747,331	D33,475
BN 139 - 142	312.5	D2,990,727	D747,682	D33,491
BN 101	324	D3,022,985	D755,746	D33,852
BN 124 & 125	332	D3,045,425	D761,356	D34,104
BN 130 & 131	342	D3,073,475	D768,369	D34,418
BN 121	344.8	D3,081,329	D770,332	D34,506
BN 112	346	D3,084,695	D771,174	D34,543
BN 129	352	D3,101,525	D775,381	D34,732
BN 114	363	D3,132,380	D783,095	D35,077
BN 151 & 153	369	D3,149,210	D787,302	D35,266
BN 149	370	D3,152,015	D788,004	D35,297
BN 150	372	D3,157,625	D789,406	D35,360
BN 152	374	D3,163,235	D790,809	D35,423
BN 106 - 120	375	D3,166,040	D791,510	D35,454
BN 154	376	D3,168,845	D792,211	D35,486
BN 113	380.8	D3,182,309	D795,577	D35,636
BN 137	383.5	D3,189,882	D797,471	D35,721
BN 138	383.7	D3,190,443	D797,611	D35,728
BN 136	384.9	D3,193,809	D798,452	D35,765
BN 135	385	D3,194,090	D798,522	D35,768
BN 134	386	D3,196,895	D799,224	D35,800
BN 133	387	D3,199,700	D799,925	D35,831
BN 132	387.9	D3,202,224	D800,556	D35,859
BN 128	403.8	D3,246,824	D811,706	D36,359
BN 127	413	D3,272,630	D818,157	D36,648
BN 126	415	D3,278,240	D819,560	D36,711
BN 102	430	D3,320,315	D830,079	D37,182
BN 103	435	D3,334,340	D833,585	D37,339
BN 105	440	D3,348,365	D837,091	D37,496
BN 123	500	D3,516,665	D879,166	D39,381
BN 104	514	D3,555,935	D888,984	D39,820

3 BEDROOM bungalow 70 SQM

OULAYE



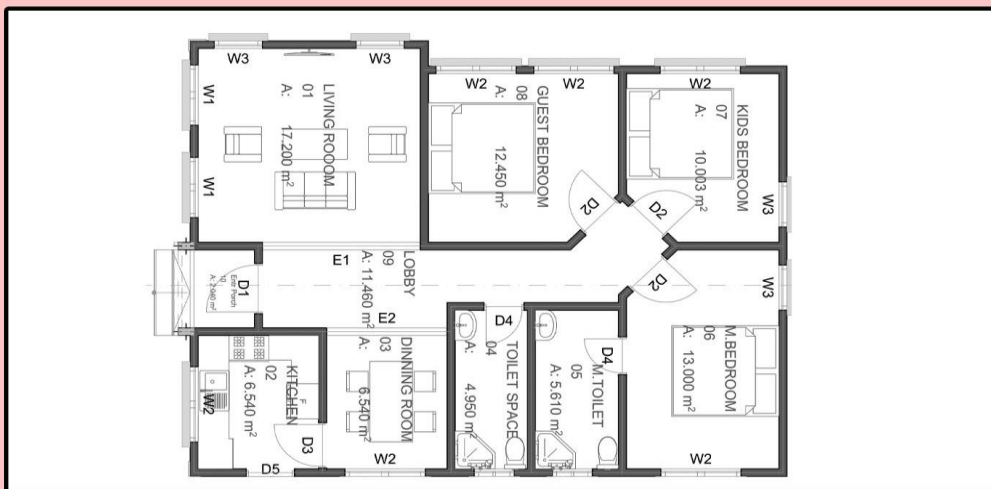
- 3 BEDROOMS
- BATHS: 2
- LIVING ROOM: 1
- KITCHEN: 1 PARTLY FITTED
- DINNING AREA

PRICE LIST

Plot Number	Plot Size (sqm)	70m2 - 3 bed		
		70m2 - 3 bed	25%	Est. Monthly Repayment
BN 148	178.5	D2,675,329	D668,832	D29,959
BN 145	180.8	D2,681,781	D670,445	D30,031
BN 157	187	D2,699,172	D674,793	D30,226
BN 146 /147	187.5	D2,700,574	D675,144	D30,242
BN 147	187.5	D2,700,574	D675,144	D30,242
BN 143	190.5	D2,708,989	D677,247	D30,336
BN 144	192	D2,713,197	D678,299	D30,383
BN 158	202	D2,741,247	D685,312	D30,697
BN 156	265	D2,917,962	D729,490	D32,676
BN 122	279	D2,957,232	D739,308	D33,116
BN 155	292	D2,993,697	D748,424	D33,524
BN 100	312	D3,049,797	D762,449	D34,153
BN 139 - 142	312.5	D3,051,199	D762,800	D34,168
BN 101	324	D3,083,457	D770,864	D34,529
BN 124 & 125	332	D3,105,897	D776,474	D34,781
BN 130 & 131	342	D3,133,947	D783,487	D35,095
BN 121	344.8	D3,141,801	D785,450	D35,183
BN 112	346	D3,145,167	D786,292	D35,221
BN 129	352	D3,161,997	D790,499	D35,409
BN 114	363	D3,192,852	D798,213	D35,755
BN 151 & 153	369	D3,209,682	D802,420	D35,943
BN 149	370	D3,212,487	D803,122	D35,974
BN 150	372	D3,218,097	D804,524	D36,037
BN 152	374	D3,223,707	D805,927	D36,100
BN 106 - 120	375	D3,226,512	D806,628	D36,131
BN 154	376	D3,229,317	D807,329	D36,163
BN 113	380.8	D3,242,781	D810,695	D36,314
BN 137	383.5	D3,250,354	D812,589	D36,398
BN 138	383.7	D3,250,915	D812,729	D36,405
BN 136	384.9	D3,254,281	D813,570	D36,442
BN 135	385	D3,254,562	D813,640	D36,446
BN 134	386	D3,257,367	D814,342	D36,477
BN 133	387	D3,260,172	D815,043	D36,508
BN 132	387.9	D3,262,696	D815,674	D36,537
BN 128	403.8	D3,307,296	D826,824	D37,036
BN 127	413	D3,333,102	D833,275	D37,325
BN 126	415	D3,338,712	D834,678	D37,388
BN 102	430	D3,380,787	D845,197	D37,859
BN 103	435	D3,394,812	D848,703	D38,016
BN 105	440	D3,408,837	D852,209	D38,173
BN 123	500	D3,577,137	D894,284	D40,058
BN 104	514	D3,616,407	D904,102	D40,498

3 BEDROOM bungalow 90 SQM

NAFFIE



- 3 BEDROOMS
- BATHS: 2
- LIVING ROOM: 1
- KITCHEN: 1 PARTLY FITTED
- DINNING AREA

PRICE LIST

		3 Bed Naffie - 90m2		
Plot Number	Plot Size (sqm)	Price (GMD)	25%	Est. Monthly Repayment
BN 156	265	D3,217,583	D804,396	D36,031
BN 122	279	D3,256,853	D814,213	D36,471
BN 155	292	D3,293,318	D823,329	D36,880
BN 100	312	D3,349,418	D837,354	D37,508
BN 139 - 142	312.5	D3,350,820	D837,705	D37,524
BN 101	324	D3,383,078	D845,769	D37,885
BN 124 & 125	332	D3,405,518	D851,379	D38,136
BN 130 & 131	342	D3,433,568	D858,392	D38,450
BN 121	344.8	D3,441,422	D860,355	D38,538
BN 112	346	D3,444,788	D861,197	D38,576
BN 129	352	D3,461,618	D865,404	D38,764
BN 114	363	D3,492,473	D873,118	D39,110
BN 151 & 153	369	D3,509,303	D877,326	D39,298
BN 149	370	D3,512,108	D878,027	D39,330
BN 150	372	D3,517,718	D879,429	D39,392
BN 152	374	D3,523,328	D880,832	D39,455
BN 106 - 120	375	D3,526,133	D881,533	D39,487
BN 154	376	D3,528,938	D882,234	D39,518
BN 113	380.8	D3,542,402	D885,600	D39,669
BN 137	383.5	D3,549,975	D887,494	D39,754
BN 138	383.7	D3,550,536	D887,634	D39,760
BN 136	384.9	D3,553,902	D888,476	D39,798
BN 135	385	D3,554,183	D888,546	D39,801
BN 134	386	D3,556,988	D889,247	D39,832
BN 133	387	D3,559,793	D889,948	D39,864
BN 132	387.9	D3,562,317	D890,579	D39,892
BN 128	403.8	D3,606,917	D901,729	D40,391
BN 127	413	D3,632,723	D908,181	D40,680
BN 126	415	D3,638,333	D909,583	D40,743
BN 102	430	D3,680,408	D920,102	D41,214
BN 103	435	D3,694,433	D923,608	D41,371
BN 105	440	D3,708,458	D927,114	D41,528
BN 123	500	D3,876,758	D969,189	D43,413
BN 104	514	D3,916,028	D979,007	D43,853

3 BEDROOM bungalow 90 SOM

Majula



- BEDROOMS :3
- BATHROOM: 3
- LIVING ROOM:1
- DINNING AREA
- KITCHEN: PARTLY FITTED

PRICE LIST

		3 Bed Majula - 90m2		
Plot Number	Plot Size (sqm)	Price (GMD)	25% Down Payment	Est. Monthly Repayment
BN 156	265	D3,217,583	D804,396	D36,031
BN 122	279	D3,256,853	D814,213	D36,471
BN 155	292	D3,293,318	D823,329	D36,880
BN 100	312	D3,349,418	D837,354	D37,508
BN 139 - 142	312.5	D3,350,820	D837,705	D37,524
BN 101	324	D3,383,078	D845,769	D37,885
BN 124 & 125	332	D3,405,518	D851,379	D38,136
BN 130 & 131	342	D3,433,568	D858,392	D38,450
BN 121	344.8	D3,441,422	D860,355	D38,538
BN 112	346	D3,444,788	D861,197	D38,576
BN 129	352	D3,461,618	D865,404	D38,764
BN 114	363	D3,492,473	D873,118	D39,110
BN 151 & 153	369	D3,509,303	D877,326	D39,298
BN 149	370	D3,512,108	D878,027	D39,330
BN 150	372	D3,517,718	D879,429	D39,392
BN 152	374	D3,523,328	D880,832	D39,455
BN 106 - 120	375	D3,526,133	D881,533	D39,487
BN 154	376	D3,528,938	D882,234	D39,518
BN 113	380.8	D3,542,402	D885,600	D39,669
BN 137	383.5	D3,549,975	D887,494	D39,754
BN 138	383.7	D3,550,536	D887,634	D39,760
BN 136	384.9	D3,553,902	D888,476	D39,798
BN 135	385	D3,554,183	D888,546	D39,801
BN 134	386	D3,556,988	D889,247	D39,832
BN 133	387	D3,559,793	D889,948	D39,864
BN 132	387.9	D3,562,317	D890,579	D39,892
BN 128	403.8	D3,606,917	D901,729	D40,391
BN 127	413	D3,632,723	D908,181	D40,680
BN 126	415	D3,638,333	D909,583	D40,743
BN 102	430	D3,680,408	D920,102	D41,214
BN 103	435	D3,694,433	D923,608	D41,371
BN 105	440	D3,708,458	D927,114	D41,528
BN 123	500	D3,876,758	D969,189	D43,413
BN 104	514	D3,916,028	D979,007	D43,853

3 BEDROOM
bungalow 100 SQM

SAFFIE



- **BEDROOMS: 3**
- **BATHROOM: 3**
- **LIVING ROOM: 1**
- **DINNING: 1**

PRICE LIST

		3 Bed Saffie - 100m2		
Plot Number	Plot Size (sqm)	Price (GMD)	25%	Est. Monthly Repayment
BN 156	265	D3,530,628	D882,657	D39,537
BN 122	279	D3,569,898	D892,474	D39,977
BN 155	292	D3,606,363	D901,591	D40,385
BN 100	312	D3,662,463	D915,616	D41,013
BN 139 - 142	312.5	D3,663,865	D915,966	D41,029
BN 101	324	D3,696,123	D924,031	D41,390
BN 124 & 125	332	D3,718,563	D929,641	D41,642
BN 130 & 131	342	D3,746,613	D936,653	D41,956
BN 121	344.8	D3,754,467	D938,617	D42,044
BN 112	346	D3,757,833	D939,458	D42,081
BN 129	352	D3,774,663	D943,666	D42,270
BN 114	363	D3,805,518	D951,379	D42,615
BN 151 & 153	369	D3,822,348	D955,587	D42,804
BN 149	370	D3,825,153	D956,288	D42,835
BN 150	372	D3,830,763	D957,691	D42,898
BN 152	374	D3,836,373	D959,093	D42,961
BN 106 - 120	375	D3,839,178	D959,794	D42,992
BN 154	376	D3,841,983	D960,496	D43,024
BN 113	380.8	D3,855,447	D963,862	D43,174
BN 137	383.5	D3,863,020	D965,755	D43,259
BN 138	383.7	D3,863,581	D965,895	D43,266
BN 136	384.9	D3,866,947	D966,737	D43,303
BN 135	385	D3,867,228	D966,807	D43,306
BN 134	386	D3,870,033	D967,508	D43,338
BN 133	387	D3,872,838	D968,209	D43,369
BN 132	387.9	D3,875,362	D968,841	D43,397
BN 128	403.8	D3,919,962	D979,990	D43,897
BN 127	413	D3,945,768	D986,442	D44,186
BN 126	415	D3,951,378	D987,844	D44,249
BN 102	430	D3,993,453	D998,363	D44,720
BN 103	435	D4,007,478	D1,001,869	D44,877
BN 105	440	D4,021,503	D1,005,376	D45,034
BN 123	500	D4,189,803	D1,047,451	D46,919
BN 104	514	D4,229,073	D1,057,268	D47,358

3 BEDROOM bungalow 120 SQM

ABBIS



- 3 BEDROOMS
- BATHS: 2
- LIVING ROOM: 1
- KITCHEN: 1 PARTLY FITTED
- DINNING AREA

PRICE LIST

		3 Bed Abbis - 120m2		
Plot Number	Plot Size (sqm)	Price (GMD)	25%	Est. Monthly Repayment
BN 100	312	D3,988,547	D997,137	D44,665
BN 139 - 142	312.5	D3,989,950	D997,487	D44,681
BN 101	324	D4,022,207	D1,005,552	D45,042
BN 124 & 125	332	D4,044,647	D1,011,162	D45,293
BN 130 & 131	342	D4,072,697	D1,018,174	D45,607
BN 121	344.8	D4,080,551	D1,020,138	D45,695
BN 112	346	D4,083,917	D1,020,979	D45,733
BN 129	352	D4,100,747	D1,025,187	D45,921
BN 114	363	D4,131,602	D1,032,901	D46,267
BN 151 & 153	369	D4,148,432	D1,037,108	D46,455
BN 149	370	D4,151,237	D1,037,809	D46,487
BN 150	372	D4,156,847	D1,039,212	D46,550
BN 152	374	D4,162,457	D1,040,614	D46,612
BN 106 - 120	375	D4,165,262	D1,041,316	D46,644
BN 154	376	D4,168,067	D1,042,017	D46,675
BN 113	380.8	D4,181,531	D1,045,383	D46,826
BN 137	383.5	D4,189,105	D1,047,276	D46,911
BN 138	383.7	D4,189,666	D1,047,416	D46,917
BN 136	384.9	D4,193,032	D1,048,258	D46,955
BN 135	385	D4,193,312	D1,048,328	D46,958
BN 134	386	D4,196,117	D1,049,029	D46,989
BN 133	387	D4,198,922	D1,049,731	D47,021
BN 132	387.9	D4,201,447	D1,050,362	D47,049
BN 128	403.8	D4,246,046	D1,061,512	D47,549
BN 127	413	D4,271,852	D1,067,963	D47,838
BN 126	415	D4,277,462	D1,069,366	D47,900
BN 102	430	D4,319,537	D1,079,884	D48,371
BN 103	435	D4,333,562	D1,083,391	D48,529
BN 105	440	D4,347,587	D1,086,897	D48,686
BN 123	500	D4,515,887	D1,128,972	D50,570
BN 104	514	D4,555,157	D1,138,789	D51,010

4 BEDROOM
bungalow 133 SQM

SALLY



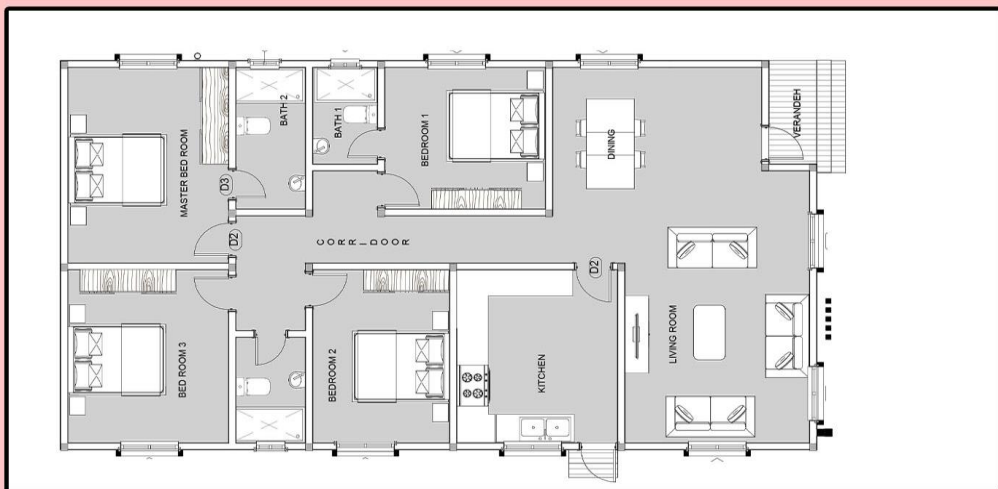
- **BEDROOMS:4**
- **2 ENSUITE BEDROOMS**
- **BATHROOMS: 2 SHARED**
- **LIVING ROOM:1 | PANTRY**
- **KITCHEN: PARTLY FITTED | DINNING AREA**

PRICE LIST

		4 Bed Sally - 133m2		
Plot Number	Plot Size (sqm)	Price (GMD)	25%	Est. Monthly Repayment
BN 100	312	D4,203,802	D1,050,951	D47,075
BN 139 - 142	312.5	D4,205,205	D1,051,301	D47,091
BN 101	324	D4,237,462	D1,059,366	D47,452
BN 124 & 125	332	D4,259,902	D1,064,976	D47,704
BN 130 & 131	342	D4,287,952	D1,071,988	D48,018
BN 121	344.8	D4,295,806	D1,073,952	D48,106
BN 112	346	D4,299,172	D1,074,793	D48,143
BN 129	352	D4,316,002	D1,079,001	D48,332
BN 114	363	D4,346,857	D1,086,714	D48,677
BN 151 & 153	369	D4,363,687	D1,090,922	D48,866
BN 149	370	D4,366,492	D1,091,623	D48,897
BN 150	372	D4,372,102	D1,093,026	D48,960
BN 152	374	D4,377,712	D1,094,428	D49,023
BN 106 - 120	375	D4,380,517	D1,095,129	D49,054
BN 154	376	D4,383,322	D1,095,831	D49,086
BN 113	380.8	D4,396,786	D1,099,197	D49,237
BN 137	383.5	D4,404,360	D1,101,090	D49,321
BN 138	383.7	D4,404,921	D1,101,230	D49,328
BN 136	384.9	D4,408,287	D1,102,072	D49,365
BN 135	385	D4,408,567	D1,102,142	D49,368
BN 134	386	D4,411,372	D1,102,843	D49,400
BN 133	387	D4,414,177	D1,103,544	D49,431
BN 132	387.9	D4,416,702	D1,104,175	D49,460
BN 128	403.8	D4,461,301	D1,115,325	D49,959
BN 127	413	D4,487,107	D1,121,777	D50,248
BN 126	415	D4,492,717	D1,123,179	D50,311
BN 102	430	D4,534,792	D1,133,698	D50,782
BN 103	435	D4,548,817	D1,137,204	D50,939
BN 105	440	D4,562,842	D1,140,711	D51,096
BN 123	500	D4,731,142	D1,182,786	D52,981
BN 104	514	D4,770,412	D1,192,603	D53,421

4 BEDROOM bungalow 133 SQM

AISHA



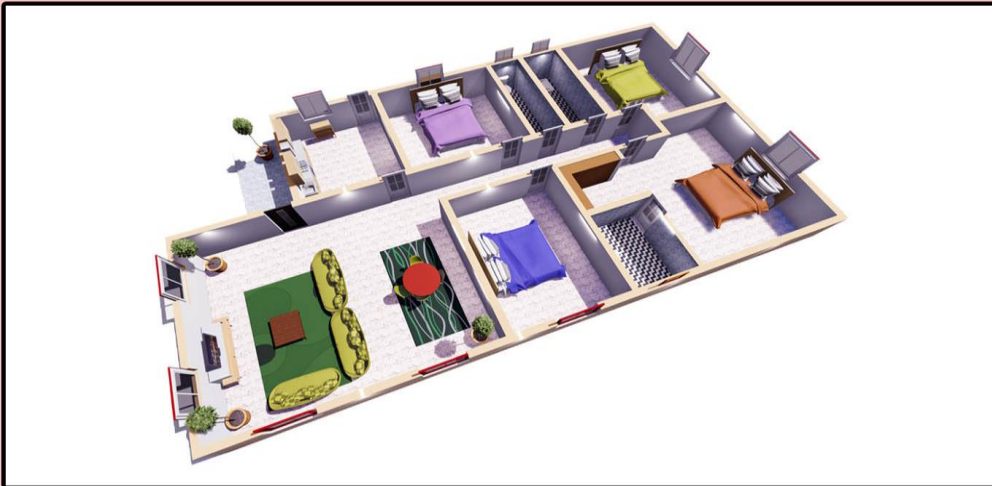
- BEDROOMS: 4
- BATHROOMS 2 AND 1 GUEST WASH ROOM
- DINNING: 1
- LIVING : 1
- KITCHEN: 1 PARTLY FITTED

PRICE LIST

		4 Bed Aisha - 133m2		
Plot Number	Plot Size (sqm)	Price (USD)	25%	Est. Monthly Repayment
BN 100	312	D3,736,586	D934,146	D41,843
BN 139 - 142	312.5	D3,737,988	D934,497	D41,859
BN 101	324	D3,770,246	D942,561	D42,220
BN 124 & 125	332	D3,792,686	D948,171	D42,472
BN 130 & 131	342	D3,820,736	D955,184	D42,786
BN 121	344.8	D3,828,590	D957,147	D42,874
BN 112	346	D3,831,956	D957,989	D42,911
BN 129	352	D3,848,786	D962,196	D43,100
BN 114	363	D3,879,641	D969,910	D43,445
BN 151 & 153	369	D3,896,471	D974,118	D43,634
BN 149	370	D3,899,276	D974,819	D43,665
BN 150	372	D3,904,886	D976,221	D43,728
BN 152	374	D3,910,496	D977,624	D43,791
BN 106 - 111	375	D3,913,301	D978,325	D43,822
BN 115- 120	375	D3,913,301	D978,325	D43,822
BN 154	376	D3,916,106	D979,026	D43,854
BN 113	380.8	D3,929,570	D982,392	D44,005
BN 137	383.5	D3,937,143	D984,286	D44,089
BN 138	383.7	D3,937,704	D984,426	D44,096
BN 136	384.9	D3,941,070	D985,268	D44,133
BN 135	385	D3,941,351	D985,338	D44,136
BN 134	386	D3,944,156	D986,039	D44,168
BN 133	387	D3,946,961	D986,740	D44,199
BN 132	387.9	D3,949,485	D987,371	D44,228
BN 128	403.8	D3,994,085	D998,521	D44,727
BN 127	413	D4,019,891	D1,004,973	D45,016
BN 126	415	D4,025,501	D1,006,375	D45,079
BN 102	430	D4,067,576	D1,016,894	D45,550
BN 103	435	D4,081,601	D1,020,400	D45,707
BN 105	440	D4,095,626	D1,023,906	D45,864
BN 123	500	D4,263,926	D1,065,981	D47,749
BN 104	514	D4,303,196	D1,075,799	D48,188

4 BEDROOM
bungalow 133 SQM

SARATA



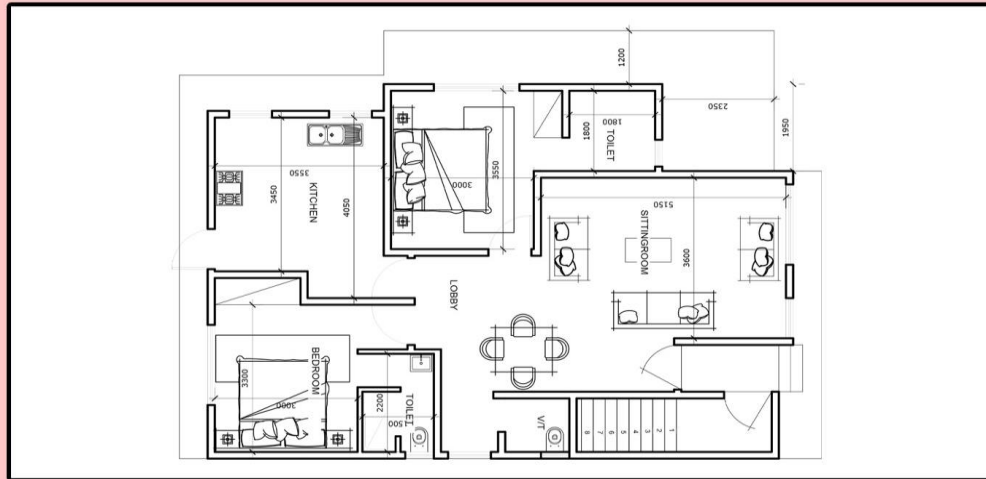
- **BEDROOMS: 4**
- **MASTER BEDROOM WITH WALK-IN CLOSET**
- **BATHROOM: 3**
- **LIVING ROOM : 1**

PRICE LIST

		4 Bed Sarata - 133m2		
Plot Number	Plot Size (sqm)	Price (GMD)	25%	Est. Monthly Repayment
BN 100	312	D4,013,186	D1,003,297	D44,941
BN 139 - 142	312.5	D4,014,589	D1,003,647	D44,957
BN 101	324	D4,046,846	D1,011,712	D45,318
BN 124 & 125	332	D4,069,286	D1,017,322	D45,569
BN 130 & 131	342	D4,097,336	D1,024,334	D45,883
BN 121	344.8	D4,105,190	D1,026,298	D45,971
BN 112	346	D4,108,556	D1,027,139	D46,009
BN 129	352	D4,125,386	D1,031,347	D46,197
BN 114	363	D4,156,241	D1,039,060	D46,543
BN 151 & 153	369	D4,173,071	D1,043,268	D46,731
BN 149	370	D4,175,876	D1,043,969	D46,763
BN 150	372	D4,181,486	D1,045,372	D46,826
BN 152	374	D4,187,096	D1,046,774	D46,888
BN 106 - 120	375	D4,189,901	D1,047,475	D46,920
BN 154	376	D4,192,706	D1,048,177	D46,951
BN 113	380.8	D4,206,170	D1,051,543	D47,102
BN 137	383.5	D4,213,744	D1,053,436	D47,187
BN 138	383.7	D4,214,305	D1,053,576	D47,193
BN 136	384.9	D4,217,671	D1,054,418	D47,231
BN 135	385	D4,217,951	D1,054,488	D47,234
BN 134	386	D4,220,756	D1,055,189	D47,265
BN 133	387	D4,223,561	D1,055,890	D47,297
BN 132	387.9	D4,226,086	D1,056,521	D47,325
BN 128	403.8	D4,270,685	D1,067,671	D47,824
BN 127	413	D4,296,491	D1,074,123	D48,113
BN 126	415	D4,302,101	D1,075,525	D48,176
BN 102	430	D4,344,176	D1,086,044	D48,647
BN 103	435	D4,358,201	D1,089,550	D48,804
BN 105	440	D4,372,226	D1,093,057	D48,962
BN 123	500	D4,540,526	D1,135,132	D50,846
BN 104	514	D4,579,796	D1,144,949	D51,286

2 BEDROOM APARTMENT 95 SQM

BETTY



FLOOR PLAN

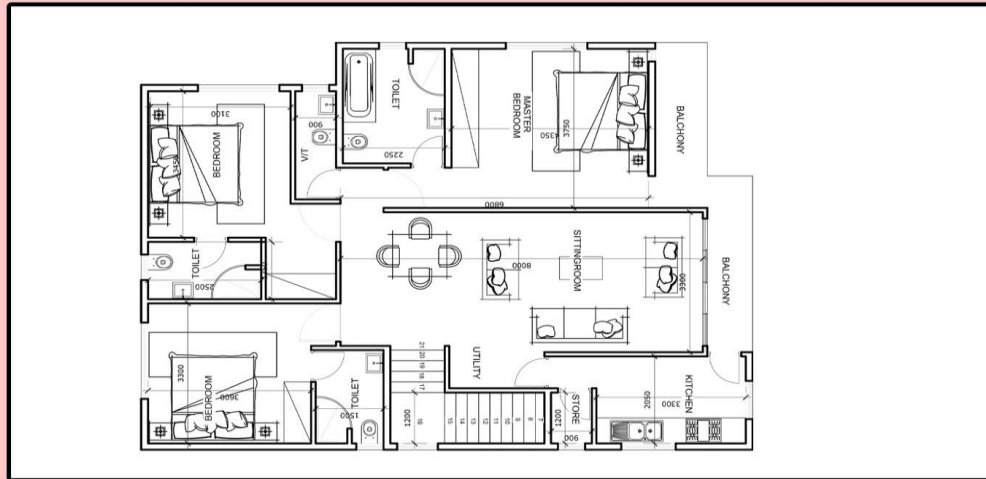
- BEDROOMS: 2
- BATHROOMS: 2 AND 1 GUESTS WASH ROOM
- LIVING ROOM : 1
- DINNING : 1
- KITCHEN: 1 PARTLY FITTED

PRICE LIST

		2 Bed Betty - 95m2 Apartment		
Plot Number	Plot Size (sqm)	Price (GMD)	25%	Est. Monthly Repayment
BN 148	178.5	D2,723,506	D680,876	D30,499
BN 145	180.8	D2,726,137	D681,534	D30,528
BN 157	187	D2,733,230	D683,307	D30,608
BN 146 /147	187.5	D2,733,802	D683,450	D30,614
BN 147	187.5	D2,733,802	D683,450	D30,614
BN 143	190.5	D2,737,234	D684,308	D30,652
BN 144	192	D2,738,950	D684,737	D30,672
BN 158	202	D2,750,390	D687,597	D30,800
BN 156	265	D2,822,462	D705,615	D31,607
BN 122	279	D2,838,478	D709,619	D31,786
BN 155	292	D2,853,350	D713,337	D31,953
BN 100	312	D2,876,230	D719,057	D32,209
BN 139 - 142	312.5	D2,876,802	D719,200	D32,215
BN 101	324	D2,889,958	D722,489	D32,363
BN 124 & 125	332	D2,899,110	D724,777	D32,465
BN 130 & 131	342	D2,910,550	D727,637	D32,593
BN 121	344.8	D2,913,753	D728,438	D32,629
BN 112	346	D2,915,126	D728,781	D32,644
BN 129	352	D2,921,990	D730,497	D32,721
BN 114	363	D2,934,574	D733,643	D32,862
BN 151 & 153	369	D2,941,438	D735,359	D32,939
BN 149	370	D2,942,582	D735,645	D32,952
BN 150	372	D2,944,870	D736,217	D32,978
BN 152	374	D2,947,158	D736,789	D33,003
BN 106 - 120	375	D2,948,302	D737,075	D33,016
BN 154	376	D2,949,446	D737,361	D33,029
BN 113	380.8	D2,954,937	D738,734	D33,090
BN 137	383.5	D2,958,026	D739,506	D33,125
BN 138	383.7	D2,958,254	D739,564	D33,127
BN 136	384.9	D2,959,627	D739,907	D33,143
BN 135	385	D2,959,742	D739,935	D33,144
BN 134	386	D2,960,886	D740,221	D33,157
BN 133	387	D2,962,030	D740,507	D33,170
BN 132	387.9	D2,963,059	D740,765	D33,181
BN 128	403.8	D2,981,249	D745,312	D33,385
BN 127	413	D2,991,774	D747,943	D33,503
BN 126	415	D2,994,062	D748,515	D33,528
BN 102	430	D3,011,222	D752,805	D33,721
BN 103	435	D3,016,942	D754,235	D33,785
BN 105	440	D3,022,662	D755,665	D33,849
BN 123	500	D3,091,302	D772,825	D34,617
BN 104	514	D3,107,318	D776,829	D34,797

3 BEDROOM APARTMENT 131 SOM

BETTY



FLOOR PLAN

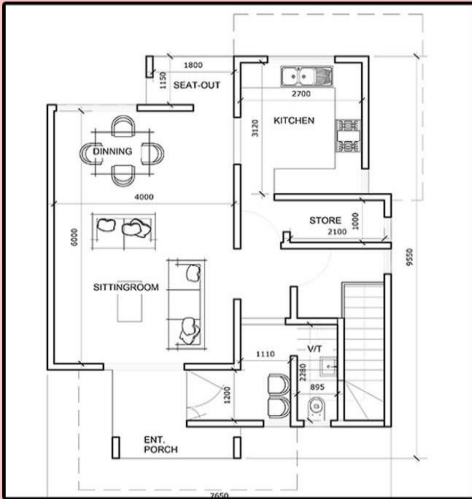
- **BEDROOMS: 3**
- **BATHROOMS: 3 AND 1 GUESTS WASH ROOM**
- **LIVING ROOM : 1**
- **DINNING : 1**
- **KITCHEN: 1 PARTLY FITTED**

PRICE LIST

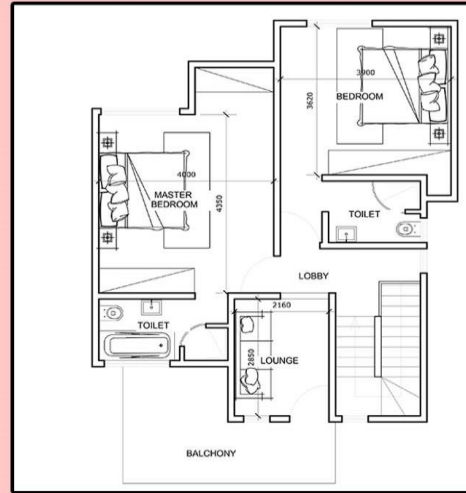
		3 Bed Betty - 131m2 Apartment		
Plot Number	Plot Size (sqm)	Price (GMD)	25%	Est. Monthly Repayment
BN 148	178.5	D3,660,567	D915,142	D40,992
BN 145	180.8	D3,663,198	D915,800	D41,022
BN 157	187	D3,670,291	D917,573	D41,101
BN 146 /147	187.5	D3,670,863	D917,716	D41,107
BN 147	187.5	D3,670,863	D917,716	D41,107
BN 143	190.5	D3,674,295	D918,574	D41,146
BN 144	192	D3,676,011	D919,003	D41,165
BN 158	202	D3,687,451	D921,863	D41,293
BN 156	265	D3,759,523	D939,881	D42,100
BN 122	279	D3,775,539	D943,885	D42,280
BN 155	292	D3,790,411	D947,603	D42,446
BN 100	312	D3,813,291	D953,323	D42,702
BN 139 - 142	312.5	D3,813,863	D953,466	D42,709
BN 101	324	D3,827,019	D956,755	D42,856
BN 124 & 125	332	D3,836,171	D959,043	D42,959
BN 130 & 131	342	D3,847,611	D961,903	D43,087
BN 121	344.8	D3,850,814	D962,704	D43,123
BN 112	346	D3,852,187	D963,047	D43,138
BN 129	352	D3,859,051	D964,763	D43,215
BN 114	363	D3,871,635	D967,909	D43,356
BN 151 & 153	369	D3,878,499	D969,625	D43,433
BN 149	370	D3,879,643	D969,911	D43,445
BN 150	372	D3,881,931	D970,483	D43,471
BN 152	374	D3,884,219	D971,055	D43,497
BN 106 - 120	375	D3,885,363	D971,341	D43,509
BN 154	376	D3,886,507	D971,627	D43,522
BN 113	380.8	D3,891,998	D973,000	D43,584
BN 137	383.5	D3,895,087	D973,772	D43,618
BN 138	383.7	D3,895,316	D973,829	D43,621
BN 136	384.9	D3,896,689	D974,172	D43,636
BN 135	385	D3,896,803	D974,201	D43,638
BN 134	386	D3,897,947	D974,487	D43,650
BN 133	387	D3,899,091	D974,773	D43,663
BN 132	387.9	D3,900,121	D975,030	D43,675
BN 128	403.8	D3,918,310	D979,578	D43,878
BN 127	413	D3,928,835	D982,209	D43,996
BN 126	415	D3,931,123	D982,781	D44,022
BN 102	430	D3,948,283	D987,071	D44,214
BN 103	435	D3,954,003	D988,501	D44,278
BN 105	440	D3,959,723	D989,931	D44,342
BN 123	500	D4,028,363	D1,007,091	D45,111
BN 104	514	D4,044,379	D1,011,095	D45,290

2 BEDROOM STOREY 141 SQM

AMIE



GROUND FLOOR



TOP FLOOR

- BEDROOMS: 2
- BATHROOMS: 3
- LIVING ROOM : 1
- DINNING: 1
- KITCHEN: 1 PARTLY FITTED

PRICE LIST

		2 Bed Amie - 141m2 Storey		
Plot Number	Plot Size (sqm)	Price (GMD)	25%	Est. Monthly Repayment
BN 148	178.5	D5,042,983	D1,260,746	D56,473
BN 145	180.8	D5,049,435	D1,262,359	D56,545
BN 157	187	D5,066,826	D1,266,706	D56,740
BN 146 & 147	187.5	D5,068,228	D1,267,057	D56,756
BN 143	190.5	D5,076,643	D1,269,161	D56,850
BN 144	192	D5,080,851	D1,270,213	D56,897
BN 158	202	D5,108,901	D1,277,225	D57,211
BN 156	265	D5,285,616	D1,321,404	D59,190
BN 122	279	D5,324,886	D1,331,221	D59,630
BN 155	292	D5,361,351	D1,340,338	D60,038
BN 100	312	D5,417,451	D1,354,363	D60,666
BN 139 - 142	312.5	D5,418,853	D1,354,713	D60,682
BN 101	324	D5,451,111	D1,362,778	D61,043
BN 124 & 125	332	D5,473,551	D1,368,388	D61,294
BN 130 & 131	342	D5,501,601	D1,375,400	D61,609
BN 121	344.8	D5,509,455	D1,377,364	D61,697
BN 112	346	D5,512,821	D1,378,205	D61,734
BN 129	352	D5,529,651	D1,382,413	D61,923
BN 114	363	D5,560,506	D1,390,126	D62,268
BN 151 & 153	369	D5,577,336	D1,394,334	D62,457
BN 149	370	D5,580,141	D1,395,035	D62,488
BN 150	372	D5,585,751	D1,396,438	D62,551
BN 152	374	D5,591,361	D1,397,840	D62,614
BN 106 - 111	375	D5,594,166	D1,398,541	D62,645
BN 115- 120	375	D5,594,166	D1,398,541	D62,645
BN 154	376	D5,596,971	D1,399,243	D62,677
BN 113	380.8	D5,610,435	D1,402,609	D62,827
BN 137	383.5	D5,618,008	D1,404,502	D62,912
BN 138	383.7	D5,618,569	D1,404,642	D62,918
BN 136	384.9	D5,621,935	D1,405,484	D62,956
BN 135	385	D5,622,216	D1,405,554	D62,959
BN 134	386	D5,625,021	D1,406,255	D62,991
BN 133	387	D5,627,826	D1,406,956	D63,022
BN 132	387.9	D5,630,350	D1,407,588	D63,050
BN 128	403.8	D5,674,950	D1,418,737	D63,550
BN 127	413	D5,700,756	D1,425,189	D63,839
BN 126	415	D5,706,366	D1,426,591	D63,902
BN 102	430	D5,748,441	D1,437,110	D64,373
BN 103	435	D5,762,466	D1,440,616	D64,530
BN 105	440	D5,776,491	D1,444,123	D64,687
BN 123	500	D5,944,791	D1,486,198	D66,572
BN 104	514	D5,984,061	D1,496,015	D67,011

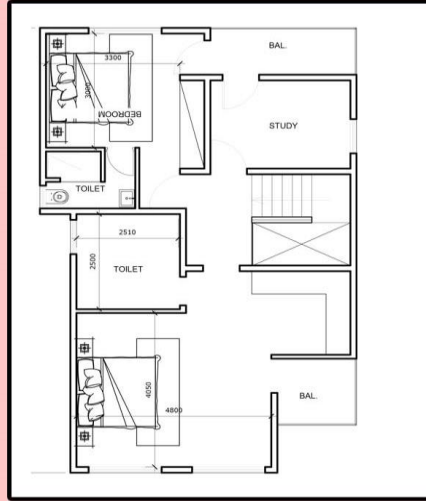
3 BEDROOM STOREY 166 SQM

BINTA

PRICE LIST



GROUND FLOOR



TOP FLOOR

- BEDROOMS: 3
- BATHROOMS: 3 AND 1 GUESTS WASH ROOM
- LIVING ROOM : 1
- DINNING : 1
- KITCHEN: 1 PARTLY FITTED

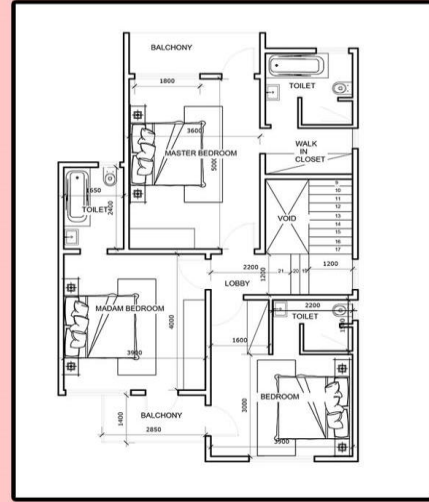
		3 Bed Binta - 166m2 Storey		
Plot Number	Plot Size (sqm)	3 bed Storey - 176m2	25%	Est. Monthly Repayment
BN 148	178.5	D5,815,262	D1,453,815	D65,121
BN 145	180.8	D5,821,713	D1,455,428	D65,193
BN 157	187	D5,839,104	D1,459,776	D65,388
BN 146 & 147	187.5	D5,840,507	D1,460,127	D65,404
BN 143	190.5	D5,848,922	D1,462,230	D65,498
BN 144	192	D5,853,129	D1,463,282	D65,545
BN 158	202	D5,881,179	D1,470,295	D65,859
BN 156	265	D6,057,894	D1,514,474	D67,838
BN 122	279	D6,097,164	D1,524,291	D68,278
BN 155	292	D6,133,629	D1,533,407	D68,686
BN 100	312	D6,189,729	D1,547,432	D69,314
BN 139 - 142	312.5	D6,191,132	D1,547,783	D69,330
BN 101	324	D6,223,389	D1,555,847	D69,691
BN 124 & 125	332	D6,245,829	D1,561,457	D69,943
BN 130 & 131	342	D6,273,879	D1,568,470	D70,257
BN 121	344.8	D6,281,733	D1,570,433	D70,345
BN 112	346	D6,285,099	D1,571,275	D70,382
BN 129	352	D6,301,929	D1,575,482	D70,571
BN 114	363	D6,332,784	D1,583,196	D70,916
BN 151 & 153	369	D6,349,614	D1,587,404	D71,105
BN 149	370	D6,352,419	D1,588,105	D71,136
BN 150	372	D6,358,029	D1,589,507	D71,199
BN 152	374	D6,363,639	D1,590,910	D71,262
BN 106 - 111	375	D6,366,444	D1,591,611	D71,293
BN 115- 120	375	D6,366,444	D1,591,611	D71,293
BN 154	376	D6,369,249	D1,592,312	D71,325
BN 113	380.8	D6,382,713	D1,595,678	D71,476
BN 137	383.5	D6,390,287	D1,597,572	D71,560
BN 138	383.7	D6,390,848	D1,597,712	D71,567
BN 136	384.9	D6,394,214	D1,598,553	D71,604
BN 135	385	D6,394,494	D1,598,624	D71,608
BN 134	386	D6,397,299	D1,599,325	D71,639
BN 133	387	D6,400,104	D1,600,026	D71,670
BN 132	387.9	D6,402,629	D1,600,657	D71,699
BN 128	403.8	D6,447,228	D1,611,807	D72,198
BN 127	413	D6,473,034	D1,618,259	D72,487
BN 126	415	D6,478,644	D1,619,661	D72,550
BN 102	430	D6,520,719	D1,630,180	D73,021
BN 103	435	D6,534,744	D1,633,686	D73,178
BN 105	440	D6,548,769	D1,637,192	D73,335
BN 123	500	D6,717,069	D1,679,267	D75,220
BN 104	514	D6,756,339	D1,689,085	D75,660

**4 BEDROOM
STORY 176 SQM**

NYIMA



GROUND FLOOR



TOP FLOOR

- **BEDROOMS: 4**
- **MASTER BEDROOM WITH WALK-IN CLOSET**
- **BATHROOMS: 4 AND 1 GUESTS WASH ROOM**
- **LIVING ROOM : 1 AND DINNING : 1**
- **KITCHEN : 1 PARTLY FITTED**

PRICE LIST

Plot Number	Plot Size (sqm)	4 Bed Nyima - 176m2 Storey		
		Price (GMD)	25%	Est. Monthly Repayment
BN 148	178.5	D6,161,998	D1,540,500	D69,004
BN 145	180.8	D6,168,450	D1,542,112	D69,076
BN 157	187	D6,185,841	D1,546,460	D69,271
BN 146 & 147	187.5	D6,187,243	D1,546,811	D69,287
BN 143	190.5	D6,195,658	D1,548,915	D69,381
BN 144	192	D6,199,866	D1,549,966	D69,428
BN 158	202	D6,227,916	D1,556,979	D69,742
BN 156	265	D6,404,631	D1,601,158	D71,721
BN 122	279	D6,443,901	D1,610,975	D72,161
BN 155	292	D6,480,366	D1,620,091	D72,569
BN 100	312	D6,536,466	D1,634,116	D73,197
BN 139 - 142	312.5	D6,537,868	D1,634,467	D73,213
BN 101	324	D6,570,126	D1,642,531	D73,574
BN 124 & 125	332	D6,867,456	D1,716,864	D76,904
BN 130 & 131	342	D6,825,381	D1,706,345	D76,433
BN 121	344.8	D6,628,470	D1,657,117	D74,228
BN 112	346	D6,631,836	D1,657,959	D74,265
BN 129	352	D6,648,666	D1,662,166	D74,454
BN 114	363	D6,679,521	D1,669,880	D74,799
BN 151 & 153	369	D6,696,351	D1,674,088	D74,988
BN 149	370	D6,699,156	D1,674,789	D75,019
BN 150	372	D6,704,766	D1,676,191	D75,082
BN 152	374	D6,710,376	D1,677,594	D75,145
BN 106 - 111	375	D6,713,181	D1,678,295	D75,176
BN 115- 120	375	D6,713,181	D1,678,295	D75,176
BN 154	376	D6,715,986	D1,678,996	D75,208
BN 113	380.8	D6,729,450	D1,682,362	D75,358
BN 137	383.5	D6,737,023	D1,684,256	D75,443
BN 138	383.7	D6,737,584	D1,684,396	D75,450
BN 136	384.9	D6,740,950	D1,685,238	D75,487
BN 135	385	D6,741,231	D1,685,308	D75,490
BN 134	386	D6,744,036	D1,686,009	D75,522
BN 133	387	D6,746,841	D1,686,710	D75,553
BN 132	387.9	D6,749,365	D1,687,341	D75,581
BN 128	403.8	D6,793,965	D1,698,491	D76,081
BN 127	413	D6,819,771	D1,704,943	D76,370
BN 126	415	D6,825,381	D1,706,345	D76,433
BN 102	430	D6,867,456	D1,716,864	D76,904
BN 103	435	D6,881,481	D1,720,370	D77,061
BN 105	440	D6,895,506	D1,723,876	D77,218
BN 123	500	D7,063,806	D1,765,951	D79,103
BN 104	514	D7,103,076	D1,775,769	D79,542

CONTACT US



THE GAMBIA

Email: info@tafafricaglobal.com

Tel: +220 776 - 2333

Tel: +220 376 - 2333

Address: 17-19 Kaira Avenue, Madiba Mall,
Brufut Gardens Estate, P.O. Box 121, The
Gambia

NIGERIA

Email: info@rivtaf.com

Tel: +2348058094194

Address: RIVTAF Golf Estate, End of Peter
Odili Road, Trans Amadi, Port Harcourt,
Rivers State, Nigeria

www.tafafricaglobal.com