

Winchelsea Star

Price \$1

Your Weekly Community Newspaper

Since 1977

Vol 47 Ed 34

Tuesday 3 September 2024

winchelseastar.org.au



What a wonderful boost for the Winchelsea Junior Netball Club!

Thank you Tony Spence, thank you Bendigo Bank

The Winchelsea Junior Netball Club celebrated a significant boost, receiving \$1,500 as part of the Surf Coast Community Footy Tipping contest.

This generous contribution was made possible thanks to Tony Spence, who placed 3rd overall in the competition. As part of his winnings, Tony had the opportunity to direct funds to a community group of his choice, and he proudly selected the talented girls of the Winchelsea Junior Netball Club.

The footy tipping contest, which featured a remarkable \$10,000 prize pool, allowed participants to support local community groups by directing their winnings. This initiative not only added excitement to the footy season but also provided a wonderful way for the community to give back.

With next year's footy tipping contest already on the horizon, we're excited to announce that entry will be completely free. Keep an eye out for more details, and get ready to support your favourite local groups while enjoying the thrill of the game!

Celebrate Positive Ageing Month in Winchelsea and Moriac

1 - 31 October

From dance and movement to trivia and information sessions, we're proud to support 25 events and activities to celebrate the Victorian Seniors Festival.

An action-packed October awaits!



Victorian Seniors Festival 2024

EXPLORE. ENGAGE. EVOLVE.

Check out the full calendar of events at surfcoast.vic.gov.au/PositiveAgeingMonth or call **5261 0600**.




Casuarina Counselling Therapy
Time For You
Counselling to help find clarity, understanding and new ways forward for relief from distress of all kinds, including anxiety, depression, addiction, relationship issues.

WANT TO JOIN PROBUS?

Enjoy fellowship with other members
Enjoy trips & outings
Listen to guest speakers



Contact Lorraine
0417 467 927

Scott McDonald
0423 413 829



S.J.R AUTOMOTIVE
ABN 942 493 646 99
13 ALSOP DRIVE, WINCHELSEA VIC 3241

SIMCO PLUMBING SERVICE
Domestic - Commercial - Rural

0400 643 976

- All general Plumbing and Gasfitting • Water tanks and Pumps
- Renovations and Extensions • Hot water and Heat pump
- Split system and Wood heaters • Roof and Gutter
- Septic and Treatment plants • Excavation, Bobcat and Tipper
- Driveways and Earthworks
- Blocked drains and CCTV Inspection

Simon McGillivray
Lic: 109610 Free Quotes, Fast & Friendly Service

Winchelsea Community Foodbank
Fridays, 12 - 2PM
30-32 Hesse Street Winchelsea



Food relief for our community.

For more info, contact Hannah
healthpromotion@hesse.vic.gov.au
0417 848 292




PLANTING TIME



Just arrived are 800 plants from Kui Nursery in Colac, paid for by Barwon Water and ready for planting.

This is part of the clearing and revegetating of the riverbanks that the Winchelsea Land & Rivercare group has been working on for 30 years -all done by local volunteers.

Join the working bees and help get the plants in the ground, from 9 - 10.30am

- Saturday August 3rd
- Saturday September 7th

Meet at the river end of Dwyer Street.
All helpers welcome!



Can you help? Landcare Planting this Saturday

Would you like to help improve our river environment? There is an opportunity this coming Saturday to help the Winchelsea landcare group with their long term planting project on the river. Everybody interested is welcome from 9am at the end of Dwyer St (near golf course). In addition to the 800 plants from Barwon Water which are in the ground, we also received another 500 from the Shire which will be planted this week. **Further information call Stewart on 0428 672054.**

Trinity Students help with planting

Helping the local landcare group with revegetation of the river on Friday August 23 were 10 VET students in Y 11 & 12 at Trinity College in Colac. Most of the students are working one day per week and part of the course is to be involved in a community

project. This year's dry conditions made getting the plants in the ground more difficult than usual but with direction from 3 landcare members, the group worked without a break from 10 till 1 when they had to leave to return to Colac.



GRANTS NOW OPEN

All four streams open on September 1 - close September 30

- **Community Initiative**
Grants up to **\$5,000**
- **Natural Environment**
Grants up to **\$8,000**
- **Minor Capital Works**
Grants up to **\$15,000**
- **Health and Wellbeing**
Grants up to **\$5,000**

Scan the **QR code** to find out more or call grants team on **5261 0600** to discuss your idea and ask any questions.



surfcoast.vic.gov.au/Grants



GDFNL Presentation Night

A huge congratulations to the following for their individual accolades after a stellar 2024 Season:

GDFL TEAM OF THE YEAR:

Fin Parish & Jordan Gould

GDNL TEAM OF THE YEAR:

Gemma Stavenuiter & Meg Royal

D Grade Best & Fairest Runners Up:

Paris Sharp, Winchelsea Blues



2025 RE-SIGNING

Fresh off another great season & a place in the GDFL Team of The Year, Fin joins his brother Cassidy as another re-signing for 2025

SENSES YOUTH ART EXHIBITION

Anglesea Art Space

September 1-15

Exhibition open: Thur-Sun, 11am-4pm

Featuring artists aged 12-25 from across the Surf Coast.

Shop 2, 103 Great Ocean Road
Anglesea (corner of Noble St)

Theme:
Senses

Please contact dobrien@surfcoast.vic.gov.au or message us on our socials for more information



Green Lead Electrical

Connecting you to a greener future
REC 23518

0467 097 101



Servicing Geelong & the Surf Coast

Specialising in all residential electrical work including:

- Switch board & lighting upgrades
- Outdoor lighting
- Electrical safety checks
- Energy efficient LED lighting
- Ceiling sweep fans & ventilation
- Energy saving advice

Phone Martin Wilkinson:

0467 097 101

greenlead@outlook.com

1132288-GG18-14



parkrun 26

31 August 2024

Trebeck Reserve, Winchelsea



33 participants completed the course through Trebeck Reserve this week in very windy conditions.

Congratulations to Greg Robinson, Ebony Berg and Liz Bennett who again completed their personal best time for Trebeck Reserve. A great effort given the windy conditions.

We had visitors from Adelaide, Yackandandah, Westerfold, Frankston, Karkarook, Wyndham. Well done everyone who walked, ran or volunteered.

This event was made possible by the following volunteers: Murray Aisbett, Helen Woodall, David Woodall, Ann Morsby, Don Smith, Frank Palermo, John Smith, Vicki Smith, Chris Hurren.

Special thanks to Frank, John and Vicki who were visiting from other parkruns and also volunteered.

Further details of this week's results can be found at trebeck-reserveparkrun.com.au/results

Please check out our Facebook page for today's photos and further information.

It takes a minimum of six people each week to safely conduct an event.

Please email trebeckreserve@parkrun.com if you are able to volunteer some of your time. Tasks are simple, sociable, fun and very much appreciated.

If you wish to join us any Saturday morning as a walker, runner or volunteer please complete the simple online registration at parkrun.com.au/register.

This is free, only needs to be done once and can be used at any of the 5,001 parkrun events worldwide.

Well behaved dogs on a short hand held leash are welcome (no waist harnesses please)

parkrun was conducted at 495 locations across Australia this week.



Tony Phelps announces candidacy for Surf Coast Shire Council elections with a focus on key community issues

Winchelsea local Tony Phelps has officially announced his candidacy for the upcoming Surf Coast Shire Council Elections in October 2024. Running under the campaign theme "Focus on what matters," Tony Phelps is committed to addressing critical local issues, including more responsive road-fixing, proactive maintenance of community assets, promotion of community health, and a sustainable budget.

A well-known figure in Winchelsea, Tony Phelps has a long history of community involvement. His campaign promises to bring tangible improvements that reflect the needs and priorities of the community.

Key focus areas of Tony Phelps' campaign:

Improving road servicing:

Tony Phelps aims to prioritise the response to reports of rough roads and pot-holes, ensuring safer and more reliable travel for all residents. This initiative addresses the significant concern of road disrepair, which impacts daily commutes and overall safety.

Proactive maintenance of community assets:

Recognising the importance of well-maintained parks, recreational facilities, and public spaces, Tony Phelps is looking for more frequent routine inspections and timely repairs. His approach aims to prevent unexpected costly future repairs such as the reflooring of the

VOTE TONY PHELPS
for
Winchelsea Ward
Focus on what matters

- * Faster road maintenance
- * Community asset upkeep
- * Community mental health
- * Sustainable budget

tonyphelps.com

Authorised by Tony Phelps, 40 Dicksons Rd, Winchelsea

Globe Theatre and extend the usability of these vital community assets.

Promoting community connection:

Tony Phelps is dedicated to advocating for more programs and initiatives that combat isolation, create friendships, and bring enjoyment to life. His vision is to create a community where residents have ample opportunities to engage with each other in community-powered activities.

Tony Phelps' deep connection to Winchelsea and practical approach to local governance make him a strong candidate for the Surf Coast

Shire Council. His focus on essential community needs and proactive solutions underscores his commitment to "Focus on what matters."

As the October elections draw near, Phelps is eager to engage with residents, listen to their concerns, and work collaboratively to create a stronger, more vibrant Surf Coast Shire.

For more information about Tony Phelps' campaign, please contact:

Tony Phelps
Phone: 0488 859 139
Email: candidate@tonyphelps.com
Website: tonyphelps.com

Have you heard about Chatty Cafe?

Plain old-fashioned friendly, relaxed conversation. A host to welcome you, no obligation to buy or sign up, come for 5 minutes or 2 hours.

WE'D LOVE TO SEE YOU!

Join us every Friday morning at Winchelsea Community House. Keeping communities connected.



WINCH HOUSE



Council-VEC to present free information session for aspiring Council candidates

Surf Coast Shire Council will partner with the Victorian Electoral Commission to present a free information session for aspiring 2024 Council Election candidates.

The session will provide important insights into election procedures and requirements, the roles of Council and councillors and how Council works to deliver community priorities.

The session will be from 6pm to 8.30pm on 4 September in Council's chambers, 1 Merrijig Drive, Torquay.

Election of nine councillors to Surf Coast Shire Council will proceed via postal vote during October, with 26 October 2024 election day.

Following the Victorian Government's electoral structure and ward boundary review the shire will be realigned to have three wards. The names for the wards are Otway Range Ward, Torquay Ward and Winchelsea Ward. Each ward will be represented by three councillors.

Candidate nominations will open on 9 September and close at noon on 17 September.

The information session will include:

- A presentation by the VEC election manager on how to nominate as a candidate. Several processes have changed since 2020 Council elections.
- Council Chief Executive Officer Robyn Seymour will talk about the role of Council in the community, including functions and priorities, working together to serve the community, and delivering on the community vision expressed through

the Council plan. Candidates will also be provided information about support that is available to councillors, an outline of the councillor induction process and time commitments.

People can register for the information session via surfcoast.vic.gov.au/Election2024

Surf Coast Shire Council Chief Executive Officer Robyn Seymour: "We are pleased to be partnering with the VEC to provide this information across a range of important election, Council and councillor-related topics.

"We encourage aspiring candidates to come along, even if they have contested previous elections or attended information

sessions for previous elections as many aspects will have changed."

All voting in the election will be by post, via ballot packs sent to all enrolled voters by the VEC.

All state and Council-enrolled voters must vote. People with more than one property have only one vote.

People can find more information via surfcoast.vic.gov.au/Election2024

Surf Coast Shire Council Chief Executive Officer Robyn Seymour: "We are pleased to be partnering with the VEC to provide this information across a range of important election, Council and councillor-related topics.

SURF COAST SHIRE
WINCHELSEA WARD

CONTACT ME
www.linktr.ee/joelgrist

VOTE 1

Joel GRIST

BACK TO BASICS

Authorised by J. Grist, PO Box 191 TORQUAY VIC 3228

Here for your Vitality. Care for the Whole Family

Chiropractic Care for:

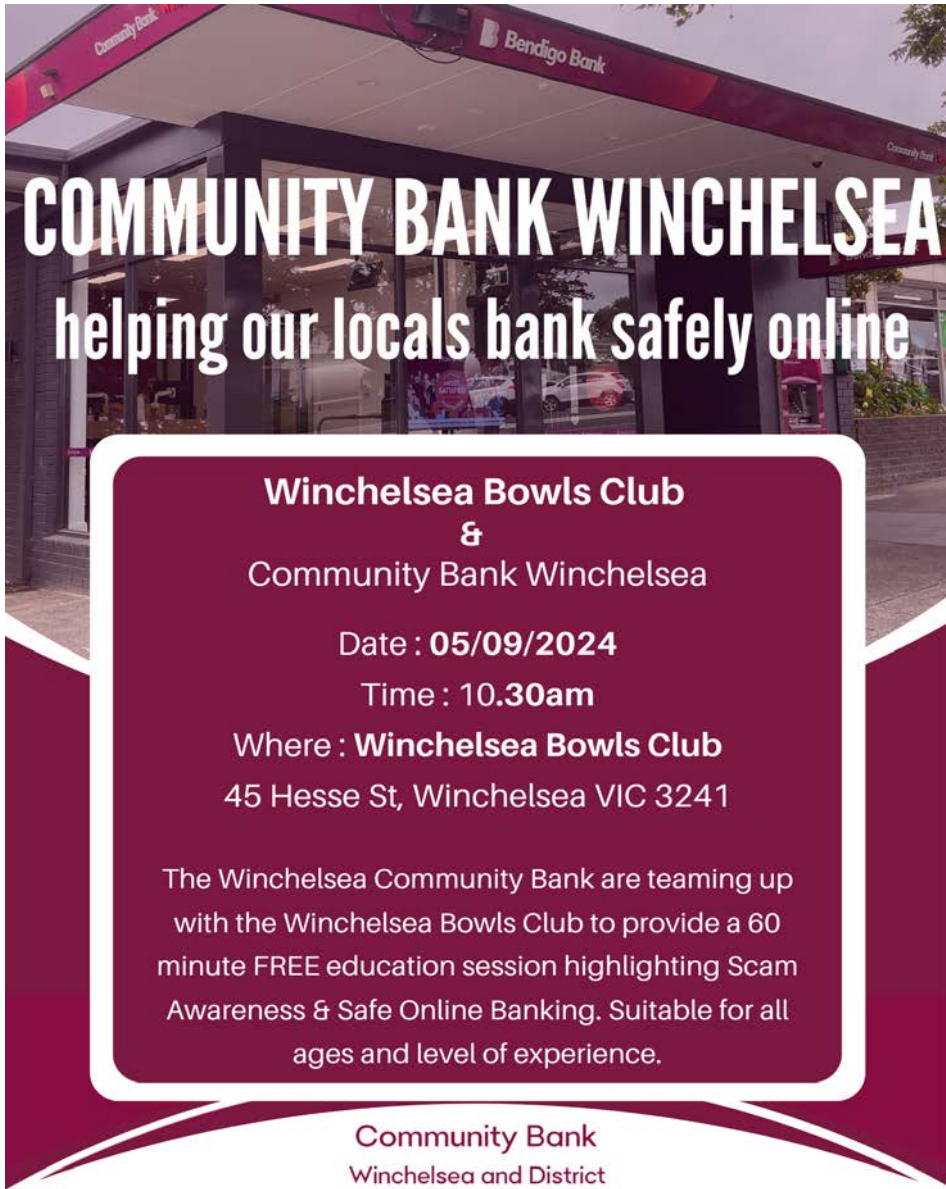
Pain - Prevention - Performance
Nervous System Care - Sleep - Wellbeing
Women's Health - Paediatrics - Vitality
Stress & Anxiety - Holistic Healing



www.onebodychiropractic.com.au

03 52672240 Shop 4/21 Hesse St Winchelsea





**Winchelsea Bowls Club
&
Community Bank Winchelsea**

Date : **05/09/2024**
Time : **10.30am**

Where : **Winchelsea Bowls Club**
45 Hesse St, Winchelsea VIC 3241

The Winchelsea Community Bank are teaming up with the Winchelsea Bowls Club to provide a 60 minute FREE education session highlighting Scam Awareness & Safe Online Banking. Suitable for all ages and level of experience.

Community Bank
Winchelsea and District



**Local bowler
Max Heaton-Harris
heading to National Finals
2024**

Well done Max - this is a huge achievement! We are extremely proud of you!

He will be joining Victoria's elite in donning the Big V and heading to Nationals to take on the best in the country. The side will seek to come together under the supervision of State Under-18 Coach, Matt Flapper, before departing for the Nationals.



The Under-18 and Senior Sides will head to Club Tweed to compete from 8th -11th October, and the Para Side will take to the pristine greens at Broadbeach.

Also a massive thank you to all the people that made it possible for Max to go a little easier!

Zero is hero

Barwon Water

We were delighted to host Minister for Water, Minister for Climate Action, Minister for Regional Development and Members of Parliament at our Torquay site on 25 July, to announce our achievement of 100 per cent renewable electricity one year ahead of schedule.

We adopted the target in 2016 and have since developed a diverse portfolio of renewable energy projects (including solar, batteries, wind and biogas) to meet current needs and support future growth through 2030 and beyond. As well as reducing emissions, this reduces our energy costs and helps keep water bills affordable.

In other positive news, we recently received \$3 million from the Australian



Renewable Energy National Agency (ARENA) to enhance wastewater treatment efficiency by adding oxygen-enriched air from hydrogen produced at the Viva Energy hub in Corio.

This all supports our Strategy 2030 aspirations for zero waste and emissions, with a hydrogen powered truck deal also advancing our sustainability goals and reducing our waste transport costs.



Winchelsea Arboretum Trail



Naida Hutton, Growing Winchelsea

Lemon Scented Gums (*Corymbia citriodora*) were planted after extensive community consultation, in Winchelsea in Mercer Street in 2022, following a Federal Government grant commemorating Queen Elizabeth's Platinum Jubilee. These trees were chosen to complement the existing plantings in Barkly Street. This species has now been planted on the other side of the Princes Highway in Witcombe St, completing an avenue of these trees extending from the western end of Mercer Street to the Common. The trees in Mercer Street have grown well since being planted and feedback has been favourable.

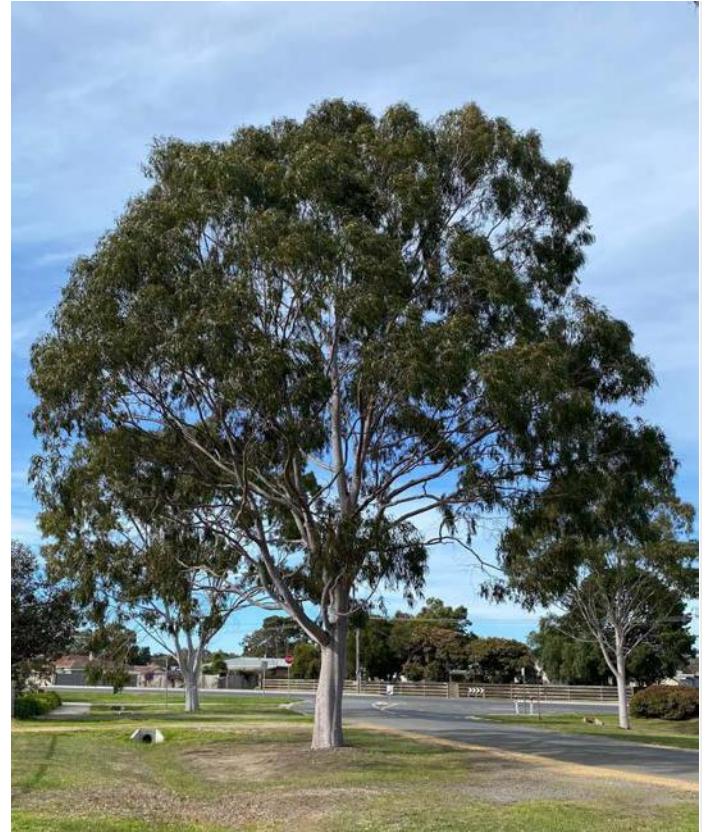
Corymbia citriodora, commonly known as lemon-scented gum and other common names, is a species of tall tree that is endemic to north-eastern Australia. It has smooth white to pink bark, narrow lance-shaped to curved adult leaves, flower buds in groups of three, white flowers and urn-shaped or barrel-shaped fruit. *Corymbia citriodora* is a tree that typically grows to a height of 25–40 m (82–131 ft), sometimes to 50 m (160 ft) and forms a lignotuber. It has smooth, pale, uniform or slightly mottled, white to pink or coppery bark that is shed in thin flakes.

Lemon-scented gum was first formally described in 1848 by William Jackson Hooker, who gave it the name *Eucalyptus citriodora* in Thomas Mitchell's *Journal of an Expedition into the Interior of Tropical Australia*. In 1995 the name was changed from *Eucalyptus citriodora* to *Corymbia citriodora*. The specific epithet (*citriodora*) is Latin meaning "lemon-scented".

Corymbia citriodora grows in undulating country in open forest and woodland in several disjunct areas in Queensland and as far south as Coffs Harbour in New South Wales. In Queensland it is found as far north as Lakeland Downs and Cooktown and as far inland as Hughenden and Chinchilla.

Some naturalists and conservationists do not recognise the genus *Corymbia* and still categorise its species within *Eucalyptus*.

The essential oil of the lemon-scented gum mainly consists of citronnellal (80%), produced largely in Brazil and China. Unrefined oil from the lemon eucalyptus tree is used in



perfumery, and a refined form of this oil is used in insect repellents, especially against mosquitoes. Essential oil refined from the leaves of the tree can contain up to 98% citronella content. The smell of the essential oil can vary, but mostly includes a strong odor comparable alone to citronella oil, with a slight hint of lemon scent.

A study comparing mosquito repellents found that products using the oil of lemon eucalyptus were effective at driving mosquitoes away from a human hand.

Gone in Thirty Seconds - Meredith Sold Out



Tickets to the Thirty Second Meredith Music Festival 6,7,8 December 2024 have now sold out. Went like hot cakes.

We are very grateful to all who got 'em or tried to get 'em. Anyone still seeking tickets is invited to join Aunty's Waitlist mmf.com.au.

Aunty's Ticket Resale Service is the only authorised ticket resale facility. Meredith is subject to a major event ticketing declaration under Part 9A of the Major Events Act 2009. This means it is an offence to sell, advertise or offer to resell a ticket for more than 10% above its face value purchase price.

The Ballot for Golden Plains XVII opens soon. Thanks for your support.

Winchelsea Star

Your Weekly Community Newspaper

Since 1977

winchelseastar.org.au



History

There have been three newspapers in this area. The Winchelsea and Birregurra 'Star' appeared in the 1890's and the the Winchelsea 'Mercury' in the 1920's. In 1977 'Winchelsea Star' was founded by a group of residents from Winchelsea and district to provide news, information and communications of a local nature.

Past editions

Visit <https://nla.gov.au/nla.obj-410430568> to see prior editions of the Star held by the National Library of Australia.

Community Newspapers

The Winchelsea Star is one of 70 members of the Community Newspaper Association of Victoria. These volunteer-driven papers inform and educate their communities, strengthening them socially and economically and helping them to be resilient in times of hardship. They publish stories to let their residents know the history and culture of their people and localities.

Volunteer committee

The Star is a registered non-profit Incorporated Association, directed by a Committee of Management with nine members. Office bearers are;

- President
- Editor
- Treasurer
- Secretary

Each year at the Annual General Meeting, nine Committee members are elected, then this Committee chooses the office bearers.

Weekly production

In terms of producing each edition, the following roles are allocated by the Committee;

- Editor(s)
- Advertising manager(s)
- Designer(s)
- Printer
- Distributor(s)

Ideally, all jobs are shared to spread the workload and cater for holidays, sickness.

All roles are voluntary except Designer and Printer which are sub-contracted.

The Winchelsea Star is compiled Monday afternoons, printed and digitally distributed on Tuesdays, with hard copies on Wednesdays. It is available Wednesday afternoon onwards from local shops.

Where local stories come from

The Star has no formal reporters. Articles, news, information and events are supplied by the community at large. Some organisations, such as the Senior Citizens, Primary School and Football and Netball Clubs, supply an article regularly.

Like to help?

The Star is a community newspaper, by the community, for the community, and community participation is key to its ongoing success.

We welcome volunteers to assist in management, become a reporter to sniff out stories, create advertising graphics, distribute printed editions, or take on a photographer role ...

send your stories

news@winchelseastar.org.au

LOCAL NEWS and ARTICLES WELCOME

Include name and address of the sender
Email news@winchelseastar.org.au
Leave hard copy at IGA Supermarket

DEADLINE 5pm Fridays

4pm Sundays - hard copy articles left at IGA
6pm Sundays - sports results and weekend events

ADVERTISING

advertising@winchelseastar.org.au 0408 102 802

free digital subscription

winchelseastar.org.au

FOLLOW US ONLINE

winchelseastar.org.au

FACEBOOK

facebook.com/TheWinchelseaStar

production

Editors: Cerrie Fogan, Yvonne Stevens, Judy Cameron
Advertising: Sasha Gauntlett, Neil McInnes
Design: Susan Corby, Tony Phelps
Printing: Winchelsea Community House
Website: winchelseastar.org.au

committee

President: president@winchelseastar.org.au
Neil McInnes
Treasurer: treasurer@winchelseastar.org.au
Cathy Cheadle
Secretary: secretary@winchelseastar.org.au
Tony Phelps
Members: Mick O'Mara, Linda Carter,
Sasha Gauntlett, Judy Cameron,
Yvonne Stevens, Cerrie Fogan



© Winchelsea Star Org. Inc. All rights reserved
Winchelsea Star Organisation Inc.
Reg. No. A0053999F ABN 75 941 529 279
winchelseastar.org.au PO Box 5 Winchelsea 3241

Views expressed are not necessarily those of the Winchelsea Star or Committee. The Winchelsea Star reserves the right to edit or not publish any article.



Winchelsea Star COMMUNITY NOTICEBOARD

email editor@winchelseastar.org.au or
leave at Winchelsea IGA



Social Bridge is played

EVERY TUESDAY

10.30 AM-1.00 PM

SENIOR CITIZENS CENTRE

36 Harding Street Winchelsea

New players always welcome

Elaine Atkinson 0458 009 616

WINCHELSEA PICKLEBALL

Winchelsea Leisure Time Centre
(next to the Primary School)
Wed 7-830pm or Thurs 10-11.30am.

All equipment supplied,
wear suitable footwear.

Lesley Mathison 0438 672 197

WINCHELSEA GIRL GUIDES

Are you interested in joining an
enthusiastic, self-motivated team working
with girls, 5-15 years?

Winchelsea Guides are seeking female
adult volunteers. We are losing our lovely
Unit Helper Teresa, who is moving to
Geelong, and to comply with adult child
ratios we need more helpers.

Come and help us provide a stimulating
program giving leadership development
opportunities for girls, as well as providing
fun and friendship.

You will need -

- Police Check clearance
(provided by Guide Centre)
 - Working with Children Check
(free when working as a volunteer)
- Phone Yvonne 0448 672630

WINCHELSEA TENNIS CLUB

JUNIOR COACHING

Mondays from 3.30pm with experienced
Nicole Mullen, \$10

SOCIAL TWILIGHT TENNIS

Monday evenings from 6.00pm.
All Welcome!

WINCHELSEA OP SHOP

Mens and Ladies Clothes Sale

Once again we will have our
\$5 bag of clothes for Men and Ladies
on over the next 2 weeks
Plenty of bargains,
be sure not to miss out.

\$5 bag of Clothes for Children

Sale on again for the next 2 weeks.
You will be sure to find something
that your child needs.

*Thanks everyone for your support in
helping the Op Shop over the years.*

Winchelsea Op Shop Ladies

WINCHELSEA LIONS

Environmentally friendly
compressed paper bricks for your fire.
Save on the rising cost of wood.
Pack 4 bricks \$5 - Roll small rolls \$2
Contact Alan 0476 475 422

UNITING CHURCH BOOK SALE

The next Uniting Church book sale
will be held on
**Friday 6th September and
Saturday 7th September 2024,**
at the Uniting Barwon Grovedale
(272 Torquay Road, corner of Reserve
and Torquay Roads)
10.00am – 2.00pm.

Come along and browse through the
great range of stock on offer.
All books are only \$1.00 and
children's books \$0.50!



FIRST SUNDAY OF EACH MONTH

	5 January 2025
6 October 2024	2 February 2025
10 Nov 2024	2 March 2025
1 Dec 2024	6 April 2025
	4 May 2025
	1 June 2025



**Please be careful out there
with this severe weather.**

**It is recommended to
stay home if able.**


To contact VICSES
(Victorian Emergency Sector)
call **132 500**
for flood, storm, tsunami,
and earthquake emergencies.

For life-threatening emergencies,
call **000**

If you are deaf, hard of hearing,
or have a speech impairment,
contact VICSES through the
National Relay Service.

Access emergency information via the
VicEmergency website or phone the
hotline at **1800 226 226.**

THANK YOU SES VOLUNTEERS !!



Rob Knuckey TRACTORS

**WINCHELSEA
0408 520 606**

Rob Knuckey is pleased to advise clients of
TWO new TYM Tractor Models
T68 of 65 end H.Power and T78 of 75 eng H.Power.
Both these models are powered by
Deutz Liquid Cooled engines running at 2200 rpm
and are Four cylinders.
Transmission has a Power Shuttle
and Syncro De Clutch button with up to
16Fwd and 16 Rev Speeds to 39Km/hr
Air Conditioned Cabin with Radio,
Wireless charging port, heating and sunroof fitted.
Level lift loader with Quick Hitch, Bump Guard
and General purpose bucket.
For further details please give Rob a call.
robknuckeytractors@gmail.com
www.robknuckeytractors.com.au



Kyeema

Rural Fencing Pty. Ltd.
Jason Armstrong & Jay Hawker
1080 Prices Lane, Ombersley, Victoria 3241
0419 565085 (Jason)
0416 585817 (Jay)
kyeemafarm@kyeemafarm.com.au
Also incorporating domestic and
rural tree trimming services.



5234 6585 0417 385 984
For all your septic tank, grease traps
and interceptor pits servicing.
Locally owned and operated

DAVIC AG

CONTRACTING AND EARTHMOVING

For all your harvesting needs
Mowing, raking, round bailing, paddock prepping, spreading and sowing
Call Dave on **0417 579 973** Bambra



STS ACCOUNTING GROUP

Your Taxation & Superannuation Specialists.

Winchelsea
5267 2673
www.surftax.com.au

venfig 10064

OZ TREES NURSERY & TREE PLANTING SERVICES

- Affordable seedlings—over 200 species
- Complete plantation service—farm forestry, shelter, aesthetics
- Deep ripping & mound ploughing. Rotary bed forming
- Our experienced staff will help you select species for your site conditions and needs

Also available—tree planting tools, milk cartons, plastic tree guards & bamboo stakes

569 Warrowie Rd. Colac
P: 5233 6280 F: 5233 6393
E: info@oztrees.com.au
W: www.oztrees.com.au
Open Monday—Friday
9am—4:30pm



Phone OzTrees for professional advice,




Dance ENROLMENTS NOW OPEN! Winchelsea

Dance Classes
REGISTER NOW

JAZZ - THEATRICAL TAP - HIP-HOP
CLASSICAL BALLET - CONTEMPORARY
Pre-School - Adults
Beginner - Advanced Levels

www.melsdancecentral.com.au

direct TEMPORARY FENCING

FOR HIRE - SUPPLIED & ERECTED - 7 DAYS
GEELONG - BELLARINE - COLAC - SURF COAST
PHONE CAM 0417 310 800

DownRyte Excavations

- Excavations
- Drilling and Piling
- Rock Placement
- Tree and Stump Removal

Sean Hunwick
Mobile: 0409 447 288
Email: downryte@activ8.net.au



Modewarre Scouts visit Deakin Uni

Marie McPadden

Modewarre Scouts visited Deakin Uni, Waurn Ponds campus to discover the research behind safe motor cycle clothing. Before going into the lab, local scientist Chris Hurren showed the Scouts the apple tree growing behind the building. It is a direct descendant of Sir Isaac Newton's theory of relativity apple tree, planted originally at CSIRO in Belmont, then moved to the University when CSIRO relocated there. It's a great looking tree, but apparently the apples do not impart bucket loads of scientific wisdom – not do they taste that great!

In the lab, Chris explained the various machines used to test the strength of different parts of motor cycle clothing, and the different materials that they are constructed from. Apparently, the original motor cycle jackets were leather flight jackets worn by returned airmen; they are now constructed from a bewildering array of modern materials.

The abrasive test, which imitates clothing sliding along a bitumen road, was astounding with clothing wearing through in a matter of seconds. The Scouts favourite machine allowed protective inserts to be pummelled by a falling weight. The THUD as the weight landed was appreciated by the Scouts as they each took a turn to press the button to release it.

What we took away from this session was that it is currently very difficult to know which is the best motor cycle safety clothing, and that PR branding and high cost do not necessarily reflect the best safety. Australia doesn't yet have a safety rating for motor cycle gear. Added to this was that the different situations that safety clothing is used in and how and where it is stored, creates a varied decrease in effectiveness. Our conclusion was that we should ask Chris for advice before purchasing. The Scouts were genuinely amazed at the complexity of the issue, and the lack of a standard given the high risk of severe injury from motor cycling accidents on our roads.

Chris then took us to another lab where we learnt about the process of taking the raw products of cotton and wool and turning it into yarn. Wool is great at accepting dye, cotton not so. A mixture of the two products can result in a marle fabric. Other different materials have their own dyes. The gap in the research machin-



ery in this lab is a machine that can recycle old fabric back into new yarn for making new garments. We all agreed with Chris that this is very important to the waste/recycling issue. Hopefully, this wonderful local research facility will soon be working to deliver strategies to solve this problem, too.

The world of textiles and so many other manufacturing industries is no longer labour intense, but is now heavily automated. This requires engineering and IT trained people, opening up new career paths for young people like our Scouts.

Not only did we learn heaps about motor cycle clothing and yarn manufacture, our Scouts completed 2 hours of their STEM badge work and had their eyes opened to future career pathways. Thanks Chris!!

Only in Victoria ...

Regional Victorians OTDS

Hunting regulations rushed through. So where's the Wildlife Act?

After just 28 days, public comment is now closed re draft Victorian Hunting Regulations, set to govern hunting in public areas across Victoria for the next decade. The government has given itself less than a month to consider dozens of submissions, finalise the Regulations, and publish them by September 7. Speedy work!

While the Regulations are being rushed through, the updating of the Wildlife Act 1975 has been stagnating since December 2021. You may recall recommendations for its revamp handed to Ministers in December 2021! The cabinet has

apparently not yet considered it. Lucky our wildlife and ecosystems are so healthy in Victoria hey? In the half-century since this Act was created, climate change and habitat destruction has wreaked havoc on our wildlife.

But back to the Regulations. It's unclear why the draft failed to include key recommendations of the Parliamentary Inquiry (besides of course the number one recommendation to ban native bird hunting).

The government says it has a 'policy to grow hunting', but in the lead up to the 2022 Victorian election, the Labor Government also had policies of 'protecting

our waterways so our wildlife can thrive', and 'standing up for safety. What happened to these commitments? The proposed Regulations undermine both of them.

Public safety IS NOT increasing public areas available to unmonitored hunters, refusing to conduct risk assessments, allowing hunting to occur in poor light conditions, and in so many public areas that authorities can't monitor them. It's ALSO NOT ignoring noise pollution, postponing hunter training, delaying acting on toxic lead or plastic pollution from firearms. And it CERTAINLY ISN'T failing to ensure hunters advise authorities in advance of where they will be hunting and when, as required in other states.

Vietnamese Boat People Part 1

Thanh Nguyen

1978. The war was over but the communist victory left the people in South Vietnam with a bleak future. Particularly those who were considered the enemy of the ruling party.

My eldest brother had just been released from two years of imprisonment as a POW. The communists had secured victory once the American troops retreated and now our whole family's prospects were limited. I was in my second year of electrical engineering but I knew that even if I graduated, I would not be able to find a job due to my brother's involvement in the war. Marked as enemy colluders, there was no hope there for us in Vietnam.

With this knowledge, my family decided to send myself and my younger sister away to find a better future for ourselves abroad. My mother gathered our meager resources and paid a fisherman 3 sticks, equivalent to 225 grams of gold, to secure us two spots on his boat. The journey was going to be dangerous; we had heard the stories of people being robbed and attacked but we did not have any other options.

It was early morning. I packed a rucksack with a couple of changes of clothes. My mum had given me a watch, a couple of diamonds and four hundred American dollars, which I carefully had hidden away for the journey. My sister and I made our way down to the markets, where we would pretend that we were part of the river trades. The little boat would take us out to the larger fishing boat where we would begin our voyage. We needed to be careful. If we were caught, we would be sent to jail.

We arrived at the fishing boat. It was constructed out of wood, with a simple shade sail overhead which would provide us shelter from the relentless sun for the next two days. We were crammed into a tiny space with ninety other desperate people, all with the same hopes. We only had enough room to sit on the floor, jammed together with men, women, and children. We were nervous but excited for the two-day trip. The ocean was beautiful and the sail proved to be a necessity for our journey. The crew distributed food for us and there were dolphins swimming alongside the boat. It was not a bad start.

A couple of hours later we encountered the first pirate boat. These were fishermen who have realized that intercepting boats like ours could yield better fortune than fishing. They surround us, dragged our boat away and proceeded to take any valuables they could find from the passengers.

Luckily, I had already anticipated this happening and I had hidden our valuables in my underwear. I had rolled the cash into a tight cigar, carefully sealed it in a plastic barrier and inserted it internally. The pirates would need to be very keen if they want that loot. We all sat quietly, knowing if we resisted, they could get violent.

This is a true story, retold to me by my father and his family.
Thanh Nguyen

Thanh is the principal dentist at Central Dental Geelong. She is very grateful to have been able to grow up and create new life in Australia after migrating here in 1990.



Winchelsea Community House Inc. A6247K
28 Hesse Street, PO BOX 75, WINCHELSEA, Vic. 3241
Phone: (03) 5267 2028 Email: manager@winchhouse.org.au
ABN: 48 932 340 254

Rhani Bayon appointed as new Venue & Publicity Administrator Winchelsea Shire Hall

The Winchelsea Community House welcomes Rhani to the team as the new Venue & Publicity Administrator for The Winchelsea Shire Hall.

The Winchelsea Shire Hall is a historic venue available to host a wide variety of community and private events and programs. The Venue & Publicity Administrator is responsible for the promotion and management of the hall, continuing its development into a community centered space.

Rhani comes from a background in sales, administration, community and not for profit organisations. She brings with her a passion for Winchelsea and the desire to connect and strengthen our community by promoting and encouraging the use of the Historic Shire Hall.

After moving to Winchelsea in 2022, I have grown to love Winchelsea's diverse and thriving community. I am aware of the rich and varied groups, programs and events that are part of what makes our town unique.

"I am really passionate about community engagement, bringing different parts of the community together to connect in their common interests to strengthen the community overall"
– Rhani Bayon



Winch Playgroup grant helps bridge gap

Barwon Water

Winchelsea is a growing regional town that has faced challenges for parents seeking social opportunities.

The Winchelsea Playgroup is bridging this gap by providing a regular gathering space for parents and children to connect.

A recipient of Barwon Water's community grants program, the playgroup now meets weekly, offering a no-cost option for parents and kids to get together.

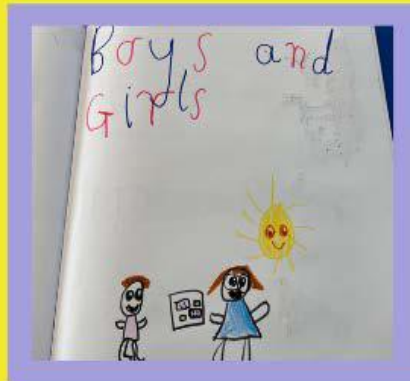
The grant has also helped fund new play equipment, promotional efforts, and a native bush tucker garden.

It's another example of how Barwon Water is fostering social inclusion and strengthening community ties in rural parts of their service area.

CELEBRATIONS SERIES



MY AND WELLBEING



Our students have been working hard to learn to recognize healthy social behaviours, understand health and safety, engage in friendly play, appreciate family differences, and practice healthy eating. This work supports them in building empathy, promoting safe interactions, developing their knowledge of family structures, and understanding how good nutrition supports their overall growth and wellbeing.



mainly music
est. 1990

Fun, Interactive music sessions for pre-school children (0-4 y.o.) and parents/caregivers

When: Mondays from 10 to 11 am
(runs during school terms)

Where: St Thomas' Hall
25 Barwon Tce.

To Enquire ring: 0407838256

CONCRETER

Alister Aitken

No job to big or small

- Driveways - Carports - Crossovers – Footpaths - Sheds Slabs - Colored Concrete – Concrete sealing - Exposed Aggregate – & more -

Call or text for a no obligation free quote

Servicing our local Winchelsea & Surrounding Areas

alaitken.aa@gmail.com or Alister - 0411 871 950

A.B.N 47 228 574 460

Knuckey's Winchelsea

Ph: 5267 2011

Knuckey's have in stock a complete range of batteries to suit tractor, heavy machinery, cars, utes

The largest range of the best oil for your vehicles—**CASTROL**—*'when only the best will do'*

The largest range of V belts.
A, B, C, D M Sections
Bolts and nuts for all occasions
Steel cut to size



The Climate Report

Judy Cameron

Nobody ever saw anything like this before

As the world heats up, methane released from thawing permafrost and warming tropical wetlands is intensifying climate breakdown.

But curbing it is achievable

By Rob Jackson <https://www.theguardian.com/environment>

Controlling methane provides our best, and perhaps only, lever for shaving peak global temperatures over the next few decades. This is because it's cleansed from the air naturally only a decade or so after release. Therefore if we could eliminate all methane emissions from human activities, methane's concentration would quickly return to pre-industrial levels.

Essentially, humans have released in excess of 3bn tonnes of methane into the atmosphere in the past 20 years. Quashing those emissions within a decade or two would save us 0.5C of warming. No other greenhouse gas gives us this much power to slow the climate crisis.

If the Earth keeps warming, though, reducing emissions from human activities may not be enough. We may also need to counter higher methane emissions in nature, including from warming tropical wetlands and thawing Arctic permafrost. El Niño [warming of sea surface temperatures] was strengthening and the tropical Atlantic was baking. Ocean temperatures off the coast of Florida approached hot-tub levels of 40C (104F) – close to temperatures suggested for cooking salmon and the highest surface ocean temperatures measured.

The north needs snow and ice for life. Climate change is hitting harder there than anywhere else, except perhaps in the Pacific. If you take away the most important part – the cold – it cascades across ecosystems and cultures.

What I and others have most observed in the high Arctic tundra is the massive permafrost melt. I travelled, for example, 1,200 kilometres in a small, open boat on the East Siberian Sea coast. Kilometre after kilometre, I saw collapsing permafrost walls. I heard the sloosh of the coast slumping into the sea.

What you can do

Our homes are a great place to begin cutting methane emissions – replacing fossil gas with cleaner electric appliances and reducing our personal beef and dairy consumption.

Heat pumps tend to be two or three times more efficient than gas furnaces. I recently replaced both my gas furnace and hot water heater for more efficient electric heat-pump models. The results in my home have been outstanding: cheaper to operate and, coupled to my fossil-free electricity, no greenhouse gas emissions or indoor pollutants. Gas stoves are another substantial source of carbon dioxide and methane pollution in our homes.

Methane pollution isn't the only reason to replace your gas stove with a cleaner induction model, though. We also assess pollutants generated from burning gas indoors: carbon monoxide, carcinogenic benzene and asthma-triggering nitrogen oxides such as nitrogen dioxide (NO₂).

Beyond what fuel you cook with, changing what you eat is another way to reduce methane emissions. A typical cow burps a bathtub's worth of methane a day, around 100kg a year. More than a billion cows worldwide and their manure therefore emits more methane than the global oil and gas industry. Eating less beef and dairy is another smart (and healthy) way for people to cut their methane footprint.

Into the Clear Blue Sky: A Path to Restoring Our Atmosphere by Rob Jackson is published by Allen Lane

40°C in August? A climate expert explains why Australia is ridiculously hot right now

The Conversation published August 26, 2024

By Andrew King, Senior Lecturer in Climate Science, The University of Melbourne

It's winter in Australia, but as you've probably noticed, the weather is unusually warm. The top temperatures over large parts of the country this weekend were well above average for this time of year.

The outback town of Oodnadatta in South Australia recorded 38.5°C on Friday 24th and 39.4°C on Saturday – about 16°C above average.

A high pressure system is bringing this unusual heat – and it's hanging around. So temperature records have already fallen and may continue to be broken for some towns in the next few days.

It's no secret the world is warming. In fact, 2024 is shaping up to be the hottest year on record. Climate change is upon us. Historical averages are becoming just that: a thing of the past. That's why this winter heat is concerning. The warming trend will continue for at least as long as we keep burning fossil fuels and polluting the atmosphere. Remember, this is only August. The heatwaves of spring and summer are only going to be hotter.

Feeling the heat

The consequences of humanity's continued greenhouse gas emissions are clear. Australia's winters are getting warmer overall. And winter "heatwaves" are becoming warmer. Australia's three warmest Augusts on record have all occurred since 2000. When the right weather conditions occur for winter warmth across Australia, the temperatures are higher than a century ago.

The warmth we are experiencing now comes off the back of a recent run of global temperature records and extreme heat events across the Northern Hemisphere.

These items cannot go in any of your bins.

The following items are not allowed in any household rubbish or recycling bins:

- chemicals and paint
- CO₂ and gas canisters
- rubble and building materials
- batteries
- e-waste.

These items can't be collected through your regular waste and recycling services because they can be dangerous to staff at sorting facilities or may harm our environment. Instead, they must be taken to specific drop-off locations so they can be processed safely.

A small act makes a big impact.

Find a drop-off location near you: surfcoast.vic.gov.au/dropoff



Bake Sale and Sausage Sizzle!

Games and stalls run by the Guides!

Facemaking and Balloon Twisting!

Guides Community Event

Sunday 29th of September
11am-2pm
Please bring cash
5 Mercer Street Winchelsea
Proudly supported by:

Smoothie bike!

Community Bank
Winchelsea & District

Bendigo Bank

HESSE RURAL HEALTH

IGA

Stay Well - Feel Well - Age Well

Health Matters Road Show *for*

Womens Health Week

Your Health Matters! GORH are here to help you improve and maintain a healthy lifestyle.

GORH Allied Health Team will be presenting:

- Nutrition guidance for staying well and feeling well
- Exercise tips to keep you moving better, for longer
- Guidance on sleeping soundly and stressing less

Cost: \$5
10am - 12noon
Morning tea provided

Date
Monday 9th September

Location
Deans March Community Hall



REGISTER OR EXPRESS INTEREST

 communityreception@gorh.vic.gov.au

 (03) 5289 4360



We'd love to see you!

WINCHELSEA PLAYGROUP

Each Thursday during school terms.
Come along between 10AM - 12PM.

Check out our Facebook Page for more information about the happenings of each session.

Playgroup Leader - Danni Menzies

Email: winchelseaplaygroup@gmail.com

St. Thomas's Hall,
27-29 Barwon Terrace,
Winchelsea VIC 3241

\$5 PER FAMILY

INCLUDES MORNING TEA & HOT DRINKS FOR CAREGIVERS

Scan to be part of our Facebook Group 



Featuring **The Billy Tea Bush Band!**



MODEWARRE BUSH DANCE

SAT. 5th OCTOBER
MODEWARRE MEMORIAL HALL

Bring along the kids for a fun evening!
5.30pm - 9.00pm
Sausage sizzle

Cost: \$10 per head
\$25 a family
\$5 child U 15 (No EPOS)

ALL WELCOME

COME AND KICK YOUR HEELS UP!

FUN FOR ALL THE FAMILY

Hosted by the Modewarre Memorial Hall Committee of Management





Become a
foster carer
Play a part

Play a part today. Call 1800 013 088
fosteringconnections.com.au

fostering
CONNECTIONS



R.A.K. DAVIS & SONS

CARTAGE CONTRACTORS

WINCHELSEA

SUPPLIER OF ALL QUARRY MATERIALS, TRUCK HIRE

CARTAGE OF GRAIN, LIME, GYPSUM & SUPER

LANDSCAPE & GARDEN SUPPLIES

56 WILLIS ST, WINCHELSEA

Ph – 5267 2094

Ryan – 0438 672 281

email: rakdavissons@gmail.com

Funeral Planning

Working out what is best for you

Prepaid Funerals, Funeral Bonds, Pay-by instalments... There are many options and it's important to make the right choice. Alyson Burchell will be available by appointment to answer any questions about funerals and planning ahead.



For more information or to make an appointment contact Sue on 5221 4788

Tuckers Community Office,
Surf Coast Taxation Services, 22 Willis Street,
Winchelsea

First Tuesday of the Month,
By appointment 10.00am – 12.00pm

Tuckers

Funeral & Bereavement Service
...for a life worth celebrating

Caring for families since 1883

5221 4788

www.tuckers.com.au



SIMPLE STORAGE SOLUTIONS

- Personal & Business Storage
- Boat, Caravan & Vehicle Storage
- High Security Premises
- Individually Alarmed Units
- Electric Gate Access
- 7 Day Access & CCTV

YOUR STORAGE PROBLEMS SOLVED

5267 3116

6 ALSOP DRIVE, WINCHELSEA 3241



- ❖ LOG BOOK SERVICE
- ❖ AUTO ELECTRICAL
- ❖ TOWING
- ❖ AIR CONDITIONING
- ❖ CLUTCH & BRAKES
- ❖ TYRES
- ❖ WHEEL ALIGNMENT
- ❖ BATTERIES

CAR, TRUCK REPAIRS & Roadworthys

PH: 5267 3001

Mob: 0417 137 457

17 Alsop Drive

HESSE RURAL HEALTH



Volunteers Required

Volunteers are one of Hesse's greatest assets, playing a vital role to enhance the quality of Hesse services & client experiences.

- Bus Driver
- Outings Assistant
- Resident Visitor
- Events & Activities Assistant
- Group Wheelchair Walkers
- Appointment Escort
- Social Support Activities
- Gardening - Winchelsea
- Hospital Auxiliary Member
- Consumer Advisory Committee
- Marketing & Fundraising Committee

For more information please contact Hesse on (03) 5267 1200 or via email reception@hesse.vic.gov.au

Wightons Lawyers

Dispute Resolution & Litigation
Debt Collection
Property Law
Wills & Estates
Powers of Attorney
Business Law
Family Law

By appointment only

22 Willis Street, Winchelsea
ph. 5221 8777

www.wightons.com.au



Hesse Health 35th birthday

Hesse Rural Health Service was formed in 1994 and celebrated that at the Community Centre at 53 Hesse Street last week.

This is the team – and there will be more photos of the attendees Hesse Rural Health Service was formed in 1994.

I was delighted to share the celebrations with the team and the people who enjoy the services offered at the Community Centre at 53 Hesse Street.

This is the team

L-R: Lisa Johns,
Taryn Mayson (Co-Ord Social Support),
Jenny Perdrisat and Carissa Brock (CEO).
Lisa and Jenny are the Activity Officers.



**WINCHELSEA
GOLF CLUB**

**45 Anderson Street
WinchelseaVIC3241**

03 5267 2660



Café La Hoot

have you tried
'owl' coffee?

1 willis st cafelahoot@gmail.com 0407 528 999

TRENCHES & HOLES PTY LTD.



PHILLIP ROBERTSON

☎ 0427 672 945

WINCHELSEA

- General Earth Works
- Driveways
- Trencher
- Kanga Loader
- Grader
- Excavator Work (3.5 & 6.5 Tonne)
- Tip Truck
- Rock Breaker
- Post Holes & Shed Footings

A.B.N 74006896898

Water Delivery



WAZZA'S
WATER CARTAGE

Stainless Tanker Up to 22,000 ltr loads
Barwon Water Registered

Domestic & Rural Water Supplies

Call Wazza

Mob: 0428 877 260

Email: wazza@wazzas.com.au Web: wazzaswater.com

M & L DRAYTON

PLUMBING SERVICES

REG No 24356 C/A No C02594

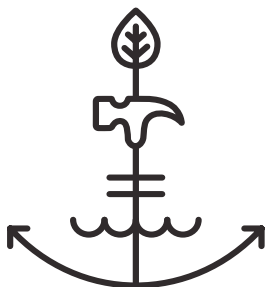
- Domestic and Rural Plumbing
- Roofing
- Sewerage & Septic
- LPG & Natural Gas Connections
- Motorised Drain Cleaning
- Backhoe Hire

Phone Mark 5288 7244

PO BOX 98 WINCHELSEA 3241

Mobile 0428 520 142

GUIM DESIGNS



CARPENTRY

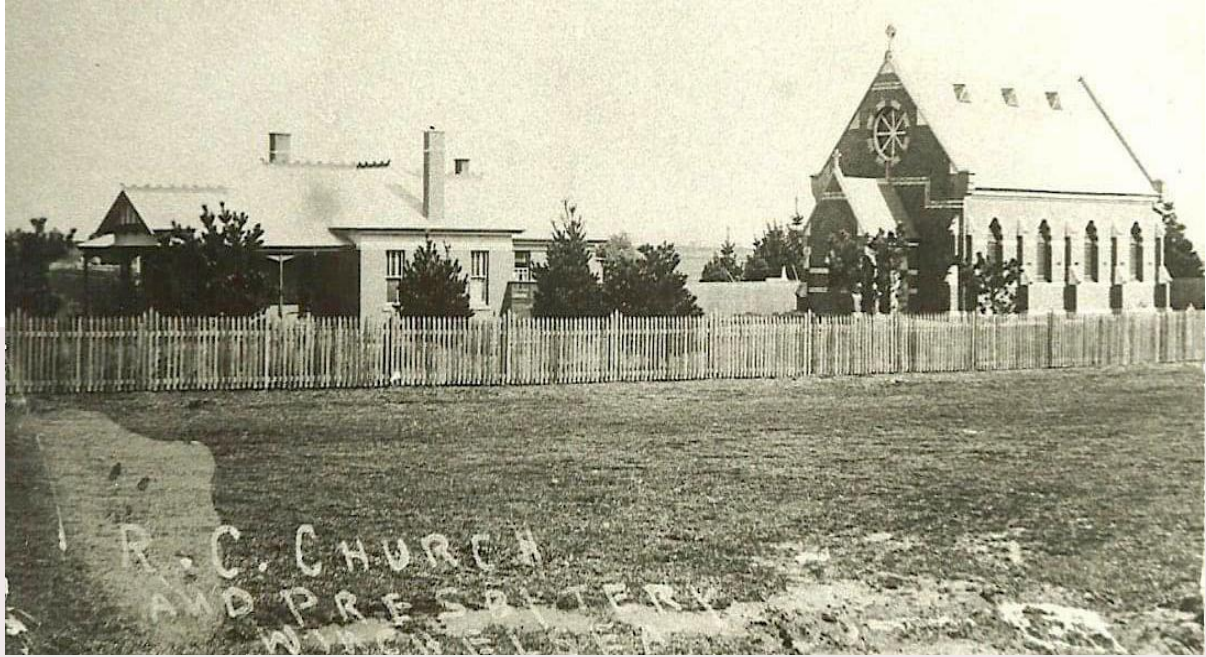
- DECKS - SAUNAS
 - FLOORING - PERGOLAS
 - WEATHERBOARDS
 - HORSE SHEDS
 - CLADDING - FENCES
- ALL THINGS TIMBER AND MORE...

INSTAGRAM [guim_designs](https://www.instagram.com/guim_designs)

CALL PAT ON

0401 232 674

ST. JOHN THE BAPTIST CHURCH, WINCHELSEA



Sandra Jones

In 1855 Dean Fitzpatrick V.G applied for two acres of land facing Mercer and Harding streets. The church was officially opened on 18/12/1892.

The first child baptised was Dorothea Kelly and the first marriage is believed to have been between Edmund Hole and Catherine McLoughlin.

The perimeter of the grounds was lined with pine and cypress trees.

A "handsome and well designed presbytery" was opened by Dr. Carr on 25/3/1906.

Fr P J Gleson of Healesville was the first parish priest, followed by Fr Con Sheehan and early in 1912 Fr Michael Hehir who remained until his death in 1934.

In the early 1920's a small wooden sacristy and confessional were removed

and a brick structure extended to include a sanctuary, sacristy and workroom.

A bell was installed in the grounds by Archbishop Mannix, but later replaced in 1924 by a one ton bell from Dublin.

The bell tower was constructed by local blacksmith Henry Schroeter.

A hall was built between the church and the railway line and opened on 24/5/1964.

WINCHELSEA HISTORICAL SOCIETY

Hesse Street Cnr Princes Highway Winchelsea 3241
OPEN Wednesdays 1 - 4pm, Fridays 10 - 3pm





WINCHELSEA FACEBOOK



Non-profit community Groups and Pages

What's on in Winchelsea	facebook.com/WhatsoninWinchelsea
Winchelsea FREE	facebook.com/groups/winchelseafree
Winchelsea Community Information	facebook.com/groups/207538644446972
Winchelsea Classifieds 3241	facebook.com/groups/216942861684082
Winchelsea Lost and Found	facebook.com/groups/768187693217518
Winchelsea Op Shop	facebook.com/HospitalAuxiliaryOpShopWinchelsea
Winchelsea Shire Hall	facebook.com/WinchelseaShireHall
Winchelsea Community House	facebook.com/winchelseacommunityhouse
Winchelsea Coronavirus Community Support Group	facebook.com/groups/2676957719207927/
The Green Winchelsea Residents	facebook.com/groups/515322772623126
Growing Winchelsea Inc	facebook.com/growingwinch
Winchelsea Star	facebook.com/TheWinchelseaStar
Winchelsea Movie Club	facebook.com/winchelseamovies
Winchelsea Community Market	facebook.com/100083362387611
Winchelsea Land and River Care Group	facebook.com/envirowinchelsea/
Upper Barwon Landcare Network	facebook.com/UpperBarwonLandcare
Winchelsea & District Historical Society Inc	facebook.com/Winchelseaanddistricthistoricalsociety/
Winchelsea Wildlife Shelter	www.winchelseawildlifeshelter.com/
SCARS - Surf Coast Animal Rescue Service	facebook.com/groups/415211698950674
Winchelsea Gardeners	facebook.com/groups/779878518703025
Winchelsea & District Historical Society	facebook.com/Winchelseaanddistricthistoricalsociety/
Winchelsea Repertory Society Inc	facebook.com/winchrep/
Winchelsea Globe Theatre	facebook.com/Winchelsea-Globe Theatre-164790897641678
Winchelsea Uniting Church	facebook.com/winchelseaunitingchurch
St Thomas' Anglican Church	facebook.com/StThomasWinchelsea
St John the Baptist Catholic Church	facebook.com/pages/Winchelsea-Catholic-Church/101775670163180
Winchelsea Mainly Music	facebook.com/groups/668500343953191/
Winchelsea Health Club	facebook.com/WinchelseaHealthClub
Winchelsea Playgroup (School terms only)	facebook.com/groups/551663435367031
Winchelsea Girl Guides	www.guidesvic.org.au/
Winchelsea/Modewarre Scouts	facebook.com/1stModewarreScouts
Winchelsea Fire Brigade	facebook.com/winchelseafirebrigade/
Winchelsea SES	facebook.com/groups/WinchSES
Country Women's Association - CWA Winchelsea	facebook.com/pg/CWAWinchelsea/
Winchelsea Bowls Club	facebook.com/Winchelsea-Bowls-Club-533783333344345/
Winchelsea Blues Cricket Club	facebook.com/groups/8999049476/
Winchelsea Blues FC	facebook.com/WinchelseaFNC/
WYLD Winchelsea Youth Leisure and Drop in	facebook.com/groups/569737570027065/
Lions Club of Winchelsea	facebook.com/LionsWinchelsea
Winchelsea Probus	facebook.com/893535194971083
Winchelsea Golf Club	facebook.com/winchelseagc/ facebook.com/groups/1324943804676697

MRP Steelworx

Matthew Partridge
p 0418 672 334
e mrpsteelworx@yahoo.com.au

Welding Service

- Onsite welding
- Farm maintenance
- Farm machinery & equipment repairs
- Cattle & sheep yards
- Custom built trailers
- Supply & install gates



5234 6585 0417 385 984
For all your domestic & stock water.
Also available for road and civil construction
Local owned and operated.

52672192 R & K Creative Framing
for all your framing needs
free quotes
pension discount
specialist in Age & Disability Modifications
Ray & Kim Jansen
10 Witcombe st
Winchelsea 3241
Ray The Home Maintenance HANDYMAN
abn 47928623462
0414672192



Winchelsea Supermarket

Trading Hours
Monday to Saturday
8.30am to 7.30pm
Sunday
10am to 7pm
Ph: 5267 2676
29 Main St, Winchelsea

Antique Repairs

By **Doug Burns** est. 1976

- All Furniture
- French polishing
- Carving
- Veneering
- Wood Turning
- Porcelain



Unusual Requests Welcome

180 Barwon Terrace, Winchelsea

0428 672 704

All About **Mowers & Chainsaws**
Repairs to all makes and models of ride on mowers, domestic mowers, pumps, chainsaws, brushcutters and small engines.
Trading Hours: Mon - Fri 8am - 5pm Saturday 8am - 12 noon
5267 2266 Cnr Princes Hwy & Lennox St Winchelsea
www.allaboutmowers.com.au
accounts@allaboutmowers.com.au

FERRIS COX STIHL BRIDGES & STRATON VICTA



SOUTHERN GRAIN STORAGE PTY. LTD.

AG SUPPLIES FERTILISER GRAIN STORAGE SEED CLEANING

(03) 5267 2351

Winchelsea Men's Shed



For The Community
Men's Shed Kindling/Offcuts
Bags of Kindling/timber offcuts are available for pick up from the Men's Shed on Wednesday's from 9.30 to 2.30.
If you need a delivery made you can call Bill on 0438 083 373.
The price for a bag of kindling is now \$7.00 (up from \$5.00).
Nesting Boxes
Bird or animal nesting boxes are available from The Men's Shed. These can be made to order.
Call in on any Wednesday to have a chat.

WINCHELSEA CONCRETING

• Driveways • Sheds • Decorative Concrete • Raft Slabs

Robert Murphy

☎ 0438 235 237

✉ winchelseaconcreting@outlook.com

Winchelsea Churches



St John's Catholic Church

Father Joseph Panackal
0404598558

Harding St, Winchelsea 3241
MASS TIMES
5pm Sat. AUG. 3, 10, 17, 24 31,
5pm Sat. SEP. 7, 14, 21, 28

St Thomas' Anglican Church

Rev'd Phil Jacobson
0477 672 042
stthomaswac@gmail.com
Barwon Tce, Winchelsea
Service 10am

Winchelsea Uniting Church

0475 777 301
uca.winchelsea@gmail.com
Hesse St, Winchelsea 3241
Services 9.30am Sundays

Thought for the Week

*"Be a good human being,
a warm-hearted
affectionate person.
That is my fundamental belief.
Having a sense of caring,
a feeling of compassion
will bring happiness
or peace of mind to oneself, and
automatically create
a positive atmosphere."*

**John Bader,
Former U/C Accredited
Lay Preacher**

'If you think you have been caught by 'underquoting', take your complaint to the "Underquoting Taskforce"

Victorian Government

The State Government will make the underquoting taskforce permanent – so they can continue to crackdown on dodgy conduct in the real estate industry.

Minister for Consumer Affairs Gabrielle Williams made the announcement with inspectors from the underquoting taskforce in Essendon today – before they head off and monitor auctions following complaints about agent behaviour in the area.

The taskforce was initially planned as a two-year operation but will now be a permanent enforcement arm of Consumer Affairs Victoria. The taskforce's work will protect Victorians from the illegal practice of underquoting while creating a fairer market for the many estate agents who do the right thing.

Since it was established, the taskforce has monitored more than 1,900 sales campaigns, attended more than 180 auctions, issued more than 320 official warnings and fines totalling more than \$1.6 million. The taskforce also educates industry professionals on their responsibilities at auctions, with a focus on repeat non-compliance.

Consumer Affairs Victoria has launched two new criminal court proceedings against estate agencies who elected not to pay their fines after being caught allegedly advertising properties for uncertain amounts. Fines for this offence are \$2,371 for individuals and \$11,855 for companies.

The underquoting taskforce continues to receive a high volume of reports through the dedicated underquoting complaints webform, with more than 2,800 reports submitted since it launched.

There was a 70 per cent increase in reports received by the taskforce in 2023/24, and an increasing number of these reports come from estate agents – showing that those who do the right thing are frustrated by dodgy competitors.

Making the taskforce permanent ensures there will continue to be zero tolerance for deceptive practices in the real estate industry.

Information on how to report underquoting can be found at consumer.vic.gov.au/housing

Health report COVID

Community transmission is slowing in Victoria, but COVID continues to be a part of our lives.

Victorian COVID Summary Sat 31 August 2024

Total Cases since Jan 22	3,036,649
Current 7d Average	91
Hospitalised	112
Number in ICU	4
Deaths	9,864
Vaccine Doses	18,500,000

WHOOPING COUGH

There have been four times more notified cases of whooping cough this year, compared to 2023. While many cases have been young children and babies, cases among young people and older adults have increased.

Pertussis (whooping cough) is a respiratory illness caused by a bacterial infection. Infants are at increased risk of serious illness, hospitalisation and death. Early diagnosis and treatment of pertussis is important. Pertussis vaccination reduces the risk of infection and complications.

MONKEY POX

As of 21 August, 120 mpox cases have been notified in Victoria since April 2024. Up to date Victorian mpox case numbers are available in the public-facing Notifiable conditions report. Data are updated daily.

Mpox is a viral infection that usually results in a mild illness. Most people recover within a few weeks. However, some people may develop severe illness and require hospitalisation. Symptoms may include fever, chills, tiredness, headache, sore throat, muscle aches, swollen lymph nodes and rash.

**Term 3 - 2024****Singing Group**

When: Wednesday Afternoons
4.45pm -6pm
(During School Terms)
Date: 4th September 2024
Where: Winchelsea Shire Hall Space
Cost: \$7.50 per session
Under 16 Free
Bookings: reception@winchhouse.org.au

Chatty Café

When: Friday Mornings
10.30am - 12 noon
Date: 6th September, 2024
Where: Winchelsea Shire Hall Space
Cost: Free
Bookings: no bookings required
Chatty Café Volunteers will be present to [welcome you!](#)

Carer's Corner (NEW)

When: 20th September, 2024
11.00am - 12 noon
And every last Friday of the month
Where: Winchelsea Shire Hall Space
Cost: Donation Tin
Come along and connect with other [carer's](#) and have a cuppa and a chat, and share useful resources.

Tai Chi

When: Friday Mornings
9.00am - 10.00am
(During School Terms)
Date: 6th September, 2024
Where: Winchelsea Community House
Cost: \$10 per session

Crochet Group

When: Alternate Saturday Afternoons
1.30pm
Date: 7th September, 2024
Where: Winchelsea Community House Space
Cost: \$5.00 per session
Bookings: reception@winchhouse.org.au

Expressions of Interest

-Child Activity on Saturday afternoons such as Board Games or Craft for children aged 8-14. This will be volunteer led so [volunteers](#) are also being sought.
-Book Club on Friday afternoons (1-3)
PLEASE REGISTER ANY INTEREST WITH US

Certificate III Early Childhood Education & Care

We are excited to be able to run this training which is scheduled to commence in Winchelsea *SOON !2401*
Bookings & Inquiries @ Winchelsea Community House

Sound Healing

When: 25th September 2024
Where: Winchelsea Shire Hall Space
Cost: \$40 per session
Book now: Vicki - 0400 149 749

Community Houses such as ours provide programs and activities to learn new skills, brush up on your existing skills and more than anything to connect with others in your community and reduce social isolation. New skills may help you with employment and build your confidence to in turn help others. Activities such as singing and sound healing help your mind and reduce any unwanted stresses.

Book your spot at Positive Ageing Month celebrations in Winchelsea and Moriac

Surf Coast Shire

Community members are invited to celebrate Positive Ageing Month across the Surf Coast Shire, with bookings now open for a diverse range of events and activities.

Positive Ageing Month is Surf Coast Shire Council's annual celebration of people aged 55 and over. Community groups are on board, organising a range of activities for people to enjoy.

Dance, film, trivia, history sharing, information sessions, open days, recreational outings, and intergenerational events bringing together older and younger people – October is overflowing with opportunities for participation, connection, and plenty of fun.

Local celebrations will feature:

- **Winchelsea Movie Club afternoon**, screening Quartet at Winchelsea Shire Hall (3 October)
- **Moriac Community Network History Group afternoon tea** with guest speaker, local historian Margaret Anderson, at Modewarre Hall (13 October)
- **Gadget Girl Scam Awareness and Get To Know Your Device session** at Moriac Community Centre (16 October)
- **Hesse Rural Health's Rock 'n' Roll Theme Day** at 53 Hesse Street, Winchelsea (22 October).

Councillor Gary Allen is proud that this year's calendar features a record number of free or low-cost events and

activities spread across the shire, with majority being community-run. "While the Council will host several events, it's fantastic that we're mostly playing a supporting role as community groups and organisations take the reins," he said. "I encourage interested people to find an event or two, book their spot, and use it as an opportunity to celebrate being a valuable citizen who contributes positively to our community."

Numerous activities and events will link in with various themes throughout October including International Probus Day, Mental Health Week, Get Online Week, and National Carers Week.

Positive Ageing Month is part of the Victorian Seniors Festival. This year's theme is: Explore. Engage. Evolve.

The Victorian Government will provide Victorian Seniors Card holders free travel on public transport between 6 and 13 October, so that they can attend regional and metropolitan events.

To access Council's Positive Ageing Month calendar and for booking details, visit surfcoast.vic.gov.au/PositiveAgeingMonth or call 5261 0600 to speak to Council's Age Friendly Officer. Printed calendars can be collected from Council office in Torquay, or from your local community house.

\$30,000 fine for illegal wildlife trader motivated by reptile "fascination"

He was charged under the Wildlife Act

Department of Energy, Environment, and Climate Action

A 21-year-old Caroline Springs man has been fined \$30,000 after he admitted to 19 wildlife offences related to unlawfully taking reptiles from the wild and possessing illegally sourced wildlife as part of a cross-border illegal wildlife trade syndicate.

The man pleaded guilty to 11 charges under the Wildlife Act 1975 and eight charges under the Wildlife Regulations 2013, claiming his "appreciation" and "fascination" with reptiles led to his involvement with the criminal operation between May 2022 and January 2023.

His offences included possessing illegally acquired or disposed of wildlife, illegally possessing protected wildlife, and failing to maintain transaction entries in his wildlife licence record book in relation to 17 shingleback lizards, 10 crested and eight central netted dragons, three eastern and three centralian blue-tongued lizards, 21 mixed species geckos, and 13 Boyd's forest dragon eggs.

He also admitted to breaching his licence conditions and illegally taking 15 shingleback lizards from the wild within Victoria.

During sentencing on Tuesday 27 August at Sunshine Magistrates' Court, presiding Magistrate Robinson said that even though the man's "involvement was limited", it helped facilitate more serious offending by others.

His Honour also noted that if not for the man's early guilty plea, he would have been sent to prison.

The man was detected as part of the Conservation Regulator's Operation Pike, a major investigation into the illegal import, export, and trade of wildlife in Victoria, with assistance from Victoria Police and the federal Department of Climate Change, Energy, the Environment and Water.



The investigation found he received reptiles from interstate and stored them at his house, with many of the animals intended for sale to local and interstate buyers.

Authorised Officers executed a search warrant at the man's house in January 2023 and seized dozens of native reptiles, technological devices, and other equipment, like storage containers and an incubator.

Another man in his 20s was identified and charged as part of Operation Pike. He is due to face Sunshine Magistrates' Court next month.

Anyone with information about illegal wildlife trade or other wildlife crime can make a confidential report to Crime Stoppers Victoria on 1800 333 000.

SERVICES & ACTIVITIES IN WINCHELSEA

VLINE TRAIN SERVICES

TO MELBOURNE:

Mon - Fri 6:41 am, 7:57am, 11:14am, 2:08pm, 7:23pm
 Sat - Sun 9:26am, 1:30pm, 7:18pm

TO WARRNAMBOOL:

Mon - Fri 8:56am, 11:55am, 2:50pm, 5:27pm,
 6:45pm, 8:50pm
 Sat - Sun 8:47am, 2:46pm, 8:34pm



WINCHELSEA GIRL GUIDES

Our Unit meets at the Catholic Church Hall,
 Harding St Winchelsea each Monday 4.30pm-6pm
 All girls 5yrs- 15yrs Welcome!
 Contact Yvonne Orchard 0448 672 630
 or Emily LaPorte Phone 0476 719 381



COUNTRY WOMEN'S ASSOCIATION

7pm second Wednesday of month
 Winchelsea Senior Citizens' Hall



1st Modda & 1st Winchelsea SCOUT GROUP

Joey's: Tuesdays of school term 5-6pm
Cubs: Mondays of school term 6:30-8pm
Scouts: Tuesdays of school term 6:30-8:30pm
 All at Modewarre Hall, Cape Otway Rd
Venturers: Wed at Walton's Rd Venturer Den
 Contact Marie McPadden 0409 330147



WINCHELSEA SES

Every Wednesday
 Visitors and inquiries welcome
 0408 102 802



BUS TO THE HUB

For reservations on the weekly bus
 to the Eastern Reserve Hub,
 please phone 52671202.

Winchelsea and District COMBINED PROBUS CLUB



Senior Citizens Rooms,
 Harding St, Winchelsea.
 New members always welcome.
 Enquiries Lorraine 0417 467 927

SURF COAST MOBILE LIBRARY

Hesse St, Fridays, 2pm-5pm
 Surf Coast Mobile Library
 parked in Hesse Street (outside Shire Hall)
 Fridays 2:00 and 5:00pm unless it is a Public Holiday.



SOCIAL BRIDGE

Every Tuesday 10.30 am - 1.00 pm
 Senior Citizens Centre
 36 Harding Street Winchelsea
 New players always welcome
 Contact Elaine Atkinson 0458009616

WINCHELSEA TAXI

0429 672 888 or 5267 2888
 Wheelchair accessible
 10 seater bus available.

WINCHELSEA TRANSFER STATION 55 Cressy Road, Winchelsea

Tuesday	2pm-4pm	Saturday	1.30-3.30pm
Thursday	2pm-4pm	Sunday	9.30-12.30pm

Closed on Christmas Day,
 but open on other public holidays
 that fall during their normal operating hours.
www.surfcoast.vic.gov.au/disposalsites



WINCHELSEA PLAYGROUP

Every second Thursday 10am-12pm
 St Thomas Anglican Church Hall
 cnr Barwon Tce and Hopkins St, Winchelsea
 Contact: Danni Menzies 0432019944
winchelseaplaygroup@gmail.com
 Facebook - Winchelsea Playgroup 2019
New families welcome





Located at 36 Main Street, Winchelsea 3241

For any enquires or bookings please contact the clinic on 5292 8028.
Or visit our website: www.winchmc.com.au

Opening Hours:

Monday - Friday 8:00am - 5.00pm
(Monday Evening Clinics available and selected Saturdays)



Our clinic accepts online bookings via the app called HotDoc.
Download the app on the App Store or Google Play or head to our website.

WINCHELSEA LIONS CLUB

PAPER RECYCLING

Paper depot rear of Senior Citizens Rooms
Harding Street
NEWSPAPERS, MAGAZINES, PHONE BOOKS WANTED



RAISING FUNDS FOR OUR TOWN & DISTRICT
0408 520 606



Winchelsea and District

Ebony knows banking

If you need help with yours, you need to meet Ebony.

Ebony shares her knowledge of banking so you can achieve what you want from life.

And, she can meet you when and where it suits you; at the branch, over the phone, or via video call.

If you need help with your banking, call Ebony Berg, Loan Specialist on 5267 3189 or search Bendigo Bank Winchelsea.

bendigobank.com.au



Bendigo and Adelaide Bank Limited ABN 11 068 049 178, AFSL/Australian Credit Licence 237879. A1415950 OUT_33710515

Winchelsea Men's Shed



For The Community

51 Hesse Street

Every Wednesday from 9:30am

New members always welcome

For more detail contact:
Ray Atkinson (Co-ordinator)
0407 839 139

or
winchmensed@gmail.com

Need a job done?
Woodworking jobs,
furniture repairs, small jobs.
Drop in and talk to us.



WINCHELSEA LIONS CLUB

ARE SELLING ENVIRONMENTALLY FRIENDLY SHREDDED PAPER COMPRESSED BRICKS FOR YOUR FIRE
SAVE ON THE RISING COST OF WOOD BY INCLUDING PAPER BRICKS AS WELL

PACKET OF 4 ROARS (BRICKS) \$5
ROLL OF PURRS (SMALL ROLLS) \$2

AVAILABLE AT LIONS PAPER SHED
36 HARDING STREET
SATURDAY MORNINGS
10AM - 12 NOON
FROM 4TH MAY UNTIL SOLD OUT

EFTPOS AVAILABLE
CASH ACCEPTED



\$400 School Saving Bonus will help busy families

Office of the Premier of Victoria

The Government's \$400 School Saving Bonus supports all students at government schools and eligible students at non-government schools – and now, families will be able to spend their bonus on more items.

Premier Jacinta Allan and Minister for Education Ben Carroll visited Footscray Primary School today to announce that the \$400 School Saving Bonus – which had sought to cover the cost of uniforms, camps, excursions, and other extracurricular activities through the year – can also be spent on textbooks.

From this week, schools and families will also get more information about how the \$400 School Saving Bonus can be accessed later this year, so families have time to plan and budget for the 2025 school year.

The once-off bonus will be available in November 2024. It will be applied for each child, so a family with three school children will receive \$1,200 in support to spend on school costs.

The Government has worked to make the process of getting and spending the \$400



The Premier at Footscray Primary School making the announcement



School Saving Bonus as easy and as flexible as possible for busy families and schools.

No family of a child in a government school will need to apply for their bonus: it is free, automatic and universal.

In Term 4, families will receive a code granting them access to the bonus. They

will get to choose how much of the funds they want allocated to a uniform and textbook voucher, and how much they want to use on school activities – like camps, sports, excursions, graduations, and other eligible programs.

The voucher for uniforms and books will be redeemable at a school-approved uniform or textbook supplier, while funds that families allocate to school activities will be managed through the school.

The voucher can be combined if families have children at different schools but use the same supplier for uniforms and textbooks. Families can also use the voucher to buy second-hand uniforms and textbooks directly from schools.

For families of students at a non-government school, the \$400 will be provided directly to each school – to be managed in consultation with the student's family and in line with the intent of the program.

Non-government school families who are eligible for the means-tested Camps, Sports and Excursions Fund (including healthcare and concession card holders) are eligible for the School Saving Bonus. Their application process will be the same as that for the Camps, Sports and Excursions Fund.

The School Saving Bonus was announced as part of a \$287 million package in the Victorian Budget 2024/25, and it will help up to 700,000 students – including around 44,000 non-government students.

The Government is also tripling the Glasses for Kids program, and providing free, nutritious breakfasts at every government school. For more information on the \$400 School Saving Bonus, visit

CALLING ARTISTS OF ALL AGES!

Community Arts Calendar Competition

Get your entries in now!

Entries close Sunday 15 September

For details go to: surfcoast.vic.gov.au/calendarcomp





Moriac Veterinary Clinic
0447 781 089
 PHONE 24 HOURS
 784 Hendy Main Road Moriac
 info@moriacvet.com
 www.moriacvetclinic.com.au
 HOURS // Monday - Friday: 8am - 5pm

Commercial | Industrial | Domestic

HAMILTONS

Truck & Bobcat Hire
 Give Aaron a Call
0438 438 623



CHARLES STEWART
 rmanetwork. Accredited Member

Charles Stewart & Company are leading livestock and real estate service providers covering Victoria's south west

	LIVESTOCK
Jamie McConachy	0418 522879
Peter McConachy	0408 522878
Matt Nelson	0428 315400
Gerard Bohan	0400 005541
Lachie Barclay	0438 346291
John Thornton	0408 526367
Dougal McIntyre	0439 575612
Ross Spitty	0419 539717
	REAL ESTATE
Michael Stewart	0418 520467
Daryl Osborne	0419 388341
Anthony McDonald	0418 593597
Gerard Bohan	0400 005541
Stephen Lugg	0417 556098
Josh Lamanna	0417 586032




Office
 56 Bromfield Street, Colac
 www.charlesstewart.com.au

HESSE RURAL HEALTH




Acute Care*
 Urgent Care*
 Residential Aged Care*
 Community Nursing
 Dietetics
 Physiotherapy
 Occupational Therapy

Diabetes Education
 Social Support Groups
 Counselling
 Home Care
 Health Promotion
 * services from Winchelsea only

www.hesseruralhealth.com.au
 P: (03) 5267 1200 E: reception@hesse.vic.gov.au

eldersrealestate.com.au





You're in Safe Hands With Peter Lindeman

Delivering Exceptional Results for Over 20 Years

If you're thinking of selling a Rural or Lifestyle acreage property on the Bellarine, the Greater Geelong region or beyond then think Peter Lindeman. Peter spent 20 years managing farms before jumping the fence to sell them; and over the last 23 years he's helped over 350 vendors achieve extraordinary results, more often than not surpassing their expectations. Why not let Peter show you how he can help you achieve an outstanding result for your property.

Peter Lindeman - 0418 525 609
RURAL AND LIFESTYLE SALES MANAGER - ELDERS GEELONG

E: peter.lindeman@elders.com.au

HF RICHARDSON

PROPERTY

Servicing all your real estate needs
 Ken McDonald **0418 524 150**



Residential | Rural Lifestyle | Agricultural Farms



Unsealed Road Review provides insights

Surf Coast Shire Council

Surf Coast Shire Council has gained valuable insights into its management of unsealed roads as well as options to enhance its approach through the Unsealed Road Review.

Surf Coast Shire's road network covers approximately 1,089 km, of which 44% (477km) are unsealed. Most unsealed roads are in rural areas, with 8% (32km) in urban areas.

Unsealed road maintenance is guided by Council's Road Management Plan 2021-25 which sets out intervention levels for hazards and timelines for corrective actions.

The key findings from the review included: Council is meeting the response time frame for unsealed road repairs, as outlined in the Road Management Plan. Community expectations for road repair is higher than the requirements in the Road Management Plan.

There are four options recommended in the review from no cost through to the high-cost option that is costed at approximately \$5 million per annum with a one off \$7.7 million spend.

Council will commence implementing the no cost option initiatives which focus on efficiency and productivity improvements. Council is having success in renewing unsealed roads with a mix of materials which includes Gherang gravel and crushed rock as this binds together for longer. Using crushed rock in potholes on wet roads is delivering better functionality

and durability for the same reason. Increased adverse weather events and limited resources impact Council's ability to react to unscheduled road repairs in a timely manner, for example, for natural disasters like floods or bushfires. These impacts are expected to become more frequent.

Residents have mixed opinions on whether they preferred their local unsealed roads to be sealed or left unsealed. Half of the respondents from areas surrounding Moriac and Winchelsea would prefer their roads to be sealed. This dropped to 19% of respondents from Aireys Inlet and surrounds.

When benchmarked against other similar Councils and statewide results, Surf Coast Shire satisfaction ratings for unsealed roads are higher. Surf Coast Shire was rated 48 in the community satisfaction survey in 2024 compared to 34 for large rural councils and 36 statewide. However, it is Council's lowest rated service and almost two-thirds of respondents in the unsealed road review were dissatisfied with the current condition of unsealed roads.

Large expenditure in the options outlined in the review will place pressure on Council's finances and need to be considered in future budgets as any increased expenditure on unsealed roads will impact other services or programs.

The unsealed road network review was completed between January and July this year and community interest was strong in

the engagement phase: 798 people completed the survey. 244 people attended drop in sessions held in Aireys Inlet, Moriac, Connewarre and Winchelsea. 23 business representatives completed the survey. 251 comments were posted on the interactive map on Council's website. "Unsealed roads, including their repair and maintenance, is something the community feels very passionate about," said Cr Libby Stapleton.

"I also found the community engagement report very interesting, especially with regard to preferences for sealed and unsealed roads in various locations," she said. "This review has highlighted that there is a gap between community expectations of how unsealed roads should be managed and maintained, compared to what can actually be delivered through existing budgets and service levels."

"However, there are some immediate changes that can be made," she said.

From the review, 24 initiatives were identified that could improve service delivery and the condition of unsealed roads across the no cost, low cost, medium cost and high cost options.

Council endorsed the implementation of no cost option to provide immediate improvement to the condition of unsealed roads. This can be achieved by grading approximately 140km more of unsealed roads throughout the year through roster changes, more proactive and efficient programming of where grading occurs plus placing greater emphasis on road material age in assessing the condition of roads and when they are renewed.

The options identified that generate new costs for Council will be considered through the budget process for 2025-26 and subsequent years.

"It has been great that the community has come and engaged with this review and told us the good and bad about the unsealed road network," she said.

"We thank the community for taking the time to do this, the amount and quality of feedback we have received has been outstanding." The full Unsealed Road Network Review can be found at surfcoast.vic.gov.au/UnsealedRoadReview

TREE WORKS & STUMP GRINDING



Fully insured and qualified climbing arborists.

Slashing and fire preparation.

FREE QUOTES
0488 553 650
Mathieu Vaupres

www.colactrees.com.au



M&B WOOD PLUMBING

Call Matt - 0418 319 357
mbwoodplumbing.au

Servicing Winchelsea & surrounds

- General maintenance & blocked drains
- Gas fitting & hot water service upgrades
- New homes & renovations

NO MATTER WHAT YOUR PROBLEM, DODDS ELECTRIX CAN DEFUSE THE SITUATION.

RURAL, INDUSTRIAL, COMMERCIAL, DOMESTIC
 PHONE 0438 887 360
 EMAIL: DODDSY@FASTMAIL.FM
 PO BOX 36 BIRREGURRA, VICTORIA 324
 REC: 17520 ABN: 64 581 250 880

MGT BUILDING & CONSTRUCTION

NEW HOMES | EXTENSIONS | RENOVATIONS

Ph: 0409 433 687



AlfordBuilt

New Homes, Renovations, Extensions, Bathrooms, Decks & Pergolas

0408 583 362

stephen@alfordbuilt.com.au



REGISTERED Building Practitioner

NATURAL GAS CONNECTIONS

M. & L DRAYTON PLUMBING SERVICES

YOUR LOCAL LICENSED

- PLUMBERS (24356)
- GAS FITTERS
- GAS CONVERTERS
- CARBON MONOXIDE TESTING

MARK 0428 520 142

Lupton BUILDERS

SPECIALISING IN QUALITY



REGISTERED Building Practitioner

- | | | |
|---------------|-----------------------|---------------|
| • NEW HOMES | • EXTENSIONS | • RENOVATIONS |
| • ALTERATIONS | • DECKS | • PERGOLAS |
| • CARPORTS | • VERANDAS | • RE-GLADS |
| • BATHROOMS | • WINDOW REPLACEMENTS | |

LEIGH LUPTON
0438 840 104

CHRIS LUPTON
0407 681 514

LEIGHLUPTON17@GMAIL.COM

Est. 1977

GREAT Bundle Deal on Bosch Hot Water...

FROM ELGAS
 Buy any Bosch Bluetooth continuous flow hot water model - 16Litre, 20Litre or 26Litre and Receive \$100* in Elgas bonus LPG gas credits



*For more details: www.elgas.com.au/appliances/boschcpflflow-16-20-26-lpg-bundle-sale

AND... for new customers, an additional \$80 WORTH OF LPG GAS CREDITS** when you open a new LPG Gas account with Elgas



Ask about the Elgas Easy Payment Plan - 12 months interest free*** on selected LPG appliances
 ***Further details can be viewed at: www.elgas.com.au/epp

Automatic tanker gas bottle refill OR gas bottle exchange refill is available for home or business...

131 161
www.elgas.com.au

ELGAS



Council approves Aireys Inlet Affordable Housing Project

Surf Coast Shire

Surf Coast Shire Council has approved a 50-year lease of land at 2 Fraser Drive Aireys Inlet, to enable a not-for-

profit housing provider to develop social and affordable housing at the site.

Housing Choices Australia (HCA) will enter a 50-year lease with Council for an annual fee of \$1. The approved lease is a key milestone in the Aireys Inlet Affordable Housing Project. It will enable HCA to use the recently endorsed concept design to apply for funding for the next two phases

of the project: detailed design and construction.

Councillor Libby Stapleton described the decision to lease the land as exciting. "Council has a goal to improve access to affordable residential accommodation, with the Aireys Inlet Affordable Housing Project a shining example of this," she said.

"Well done to the community members who put in the time and energy as part of the co-design process, to help us reach this milestone. Well done also to the broader Aireys community which has recognised the value of Council providing public land to create more liveable and sustainable communities here on the Surf Coast."

Conditions of the lease will include:

- Council's construction and operational requirements such as allocating housing to local residents or those with a connection to Aireys Inlet, and supporting existing residents during the development process.
- An agreed maintenance program of the dwellings and private open space.

There will be further community engagement opportunities during the detailed design phase, with more detailed planning of the development to occur at a later date.

Housing Choices Australia will manage the social and affordable housing and will be responsible for the collection of rental income and any costs associated with ongoing management and maintenance.

The land currently has four social housing dwellings. The lease will not include the Community Garden or a public walkway from Fraser Drive to Albert Avenue. These areas will be retained by Council to benefit the community.

The proposed lease was publicly advertised, attracting four submissions with no objections.

"Thank you to those who took the time to make a submission and voice their thoughts," Cr Stapleton said.

Stay up to date with the Aireys Inlet Affordable Housing Project at yoursay.surfcoast.vic.gov.au/FraserDrive.

Wednesday, 18 September | 7PM

DAVE O'NEIL

"Dave O'Neil is a heavyweight comedian of the highest order."
★★★★ Theatre Matters

Spiks & Speks

Tickets at copacc.com.au,
at the Box Office or
on 03 5232 9418 (#2)

*Overweight
Lightweight*

with Brad Oakes



CPACC
Colac Otway Performing Arts & Cultural Centre
95-97 Gellibrand Street, Colac VIC 3250



Water Supply Specialists

WATER SOLUTIONS

74 Dennis Street, Colac
5231 1861

ALL THINGS WATER:

- PUMPS - PIPES
- FITTINGS - TANKS
- POOL CHEMICALS
- IRRIGATION
- WATER PURIFICATION
- SOLAR - REPAIR

Facebook icon, Instagram icon, QR code



- Domestic and Commercial hire equipment • Industrial welding gas
- Digging and Earthmoving equipment • New trailers and trailer repairs
- Firewood • Stockists of Royal Oil Lubricants products
- LPG for domestic and commercial requirements

Give Chris and the Team a call on **5232 1177** or email info@colachire.com.au
www.colachire.com.au
 101 Wallace St Colac 3250



Winchelsea Star

ISSN 2202-6851



9 772202 685002

Since 1977

Winchelsea Taxis is now Surfcoast Taxis

Our fleet of vehicles are growing to all late models and we are covering an extended area including Winchelsea, Colac, Bannockburn, Inverleigh, Great Ocean Road and Geelong.
 We have a fleet of 10 seater Maxi Vans, all with capacity to carry wheelchairs.

Surfcoast Taxis Pty Ltd
All Bookings: 0408 325 992
Fax: 5267 2699
Email: bannotaxis@gmail.com
 (Admin or Stan 0429 672 888)
 66A Batson Street
 Winchelsea 3241



Accounts NDIS provider. TAC, DVA etc
 NDIS provider number 4050001044
 NDIS provider number 4050001048



DEFIBRILLATORS IN WINCHELSEA

Accessible to the public 24 hours a day

The Winchelsea Lions Club has compiled a list of public access defibrillators in Winchelsea. Four more have been installed at Winchelsea Primary School, Winchelsea Bowls Club Hesse St, the netball courts Eastern Reserve Hopkins St and at the Globe Theatre near the side entrance. If anyone knows any others that have 24 hour public access, please let Linda Carter know on 0439 817 263.

			
Bendigo Bank 11 Main Street	Ambulance Victoria 33 Willis Street	Uniting Church 33 Hesse Street	Senior Citizens 36 Harding Street
			
Men's Shed 51 Hesse Street	Winchelsea Golf Club 13 Anderson Street	Hesse Rural Health 8 Gosney Street	Wurdale Memorial Hall 220 Wurdale Road

