

THE PIONEER EXPERIENCE

Leading the way in water.



PIONEER
WATER TANKS



INVEST IN AN AUSTRALIAN MADE, PIONEER WATER TANK.

While many of our competitors strive to match our innovative technology, design and manufacturing standards, they cannot rival our proud heritage of five generations and 120 years of rural products made on Australian soil.



NO OTHER TANK COMPANY CAN GIVE YOU THESE BENEFITS.



100% Australian Owned

Proudly Australian made and owned since 1988. Made for Australia, with over 36 years of quality water storage solutions.



Trusted Since 1988

With over 35 years' experience you get the peace of mind that comes with dealing with Australia's #1 BIG tank company.



Local Dealer

Our Dealer network is made up of the most passionate, connected and trusted leaders. They're vital to the community, earning them the title of your local water hero.



PIONEER V-LOCK*

Thanks to our V-LOCK® innovation, Pioneer tanks outshine others in strength. The V-LOCK® supports our AQUALINER® for fresher water and structural integrity for decades.



20/20 Warranty

Pioneer provides a SUPERIOR 20-year warranty, 20-year structural and 20 years against leakage*.

*Applicable for tanks GT10-GT280. Conditions apply.



Fresher Water

Pioneer's AQUALINER® Fresh keeps your water fresher than any tank liner on the market.



DISCOVER THE DIFFERENCE

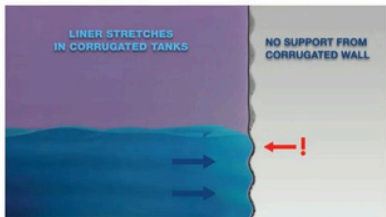
SINCE 1988, PIONEER WATER TANKS HAS SUPPLIED AUSTRALIA WITH WATER TANKS FOR DOMESTIC, FARMING, FIRE FIGHTING AND INDUSTRIAL APPLICATIONS.

Designed for Australia's harsh and demanding conditions, Pioneer Water Tanks are made from strong and durable 100% Australian made ZINCALUME® and COLORBOND® steel.

Pioneer Water Tanks come in the full range of COLORBOND® colours with sizes ranging from 12,000L to 500,000L. Custom tanks can be manufactured to up to 3 million litres and all can include a provision for fire protection reserves.

Our exclusive distributor network facilitates sales, service and installation in even the most remote Australian locations with minimal site preparation. We can offer a full range of accessories and fittings to ensure your tank meets your needs and performs to the highest possible standard.





Liner Damage in Other Tanks



The Superior V-LOCK® Design



8-80 V-LOCK®

THE STRONGEST, LONGEST
LASTING TANK ON THE MARKET

Our exclusive 8-80 V-LOCK® tanks are made from BlueScope's Steel Next Gen Activate® technology ZINCALUME® and COLORBOND®, that are rolled into a patented V profile panel, that offers market leading vertical and horizontal load strength.

The V-LOCK® system has been engineered from the ground up, to be a water tank wall panel. Unlike many other tanks that use corrugated roofing material as their walls. In addition to its stylish looks, this award winning design provides a superior load-bearing support profile, behind the internal tank liner to maximise the life of the liner.

The thickness of our fully engineered walls, increases as our tanks get bigger. From 0.8mm right up to 3mm. In addition, the V-LOCK® system means you do not get any deflection in the wall from wind or external forces like animals which can occur in flatter profiles. Pioneer also has a lip at the base of the wall, which assists the tank from sinking into your sand base and causing the tank to lose its level.

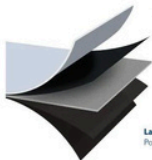




AQUALINER Fresh*



All Others



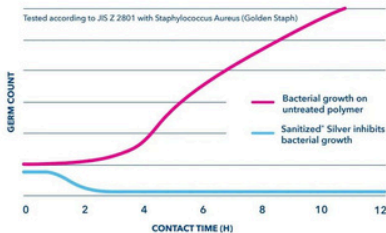
Layer 1: White Metallocene Polyethylene film

Layer 2: Proprietary co-extrusion of Thermoplastic Olefins (TPO's) & Metallocene technology

Layer 3: Weave: High tenacity multifilament Polypropylene

Layer 4: Proprietary co-extrusion of Thermoplastic Olefins (TPO's) & Metallocene technology

Layer 5: Black Metallocene SANITIZED Polyethylene Film



AQUALINER FRESH®

SAFER WATER FOR LIFE

Our AQUALINER Fresh® uses a patented antimicrobial technology (Santitized®) that uses a silver-iron film on the water side of the liner to dramatically inhibit the build-up of mould, algae, mildew and biofilm. This ensures better water quality that lasts the life of the tank.

Santitized® technology complies with the strictest international health guidelines and has been through rigorous international testing. In fact, AQUALINER Fresh® is the only Australian liner currently certified to the stringent USA standard NSF61.

Pioneer have used the same Australian liner manufacturer for 35 years. The current multi-layered product has been successfully holding rural Australia's water for over 21 years. Pioneer liner fabric is a unique blend of Polyethylene and Polypropylene giving a combination of food grade quality and additional tensile strength. Once the liner goes in, it does not deteriorate and will outlast the structure. Our liners are double welded on each join top and bottom, and come with additional wall connection tabs for liner support when the tank is empty or low.





YOUR DEALER NETWORK

Pioneer Water Tanks are distributed throughout Australasia by the most passionate, connected and trusted dealer network made up of locals, servicing locals. Your individual needs are important to our dealers, as they live in the area they sell, install and service. Their combined experience stretches into the hundreds of years, and you can be almost certain if you haven't met them already, you will know someone who has. We have sold over 100,000 tanks throughout Australia in more than 35 years of operation and many of those tanks, were installed by the guys who will do your next tank.



Call 1800 999 599 to contact
your local network dealer.

DEALER NETWORK





WARRANTY

GET TOTAL PEACE OF MIND FROM THE ONLY TANK COMPANY THAT HAS TANKS STILL IN USE ALL OVER AUSTRALIA, SINCE 1988.

A large capacity steel water tank is a big investment and it's something you only want to buy once in your lifetime. With our thicker COLORBOND® or ZINCALUME® tank walls (up to 1.2mm thick) and our five layer reinforced, 100% Australian-made AQUALINER Fresh® tank liner, a Pioneer water tank is engineered for the longest life.

Technology has come a long way since 1988 and we've spent more than 35 years improving our designs and refining our tank liner materials to stay at the forefront of water storage technology. The superior design and engineering of a Pioneer water tank, plus world-class manufacturing facilities and our highly trained and passionate staff are what gives us the confidence to offer our customers the exclusive Pioneer 20/20 Warranty.



That's a 20-year conditional structural warranty in addition to a 20-year conditional warranty against water leakage (applicable for tank models GT10 - GT280).



Melted poly tanks alongside a Pioneer Water Tank

ZINCALUME® VS POLY

Our lengthy experience with bushfires means that while we understand Pioneer tanks are not fully fireproof - Our metal tanks generally remain usable during and after a disaster when water supply is critical.

By turning to Pioneer's ZINCALUME® Liner Tanks, you substantially increase your chances of having access to water supply when it's needed the most, especially when compared to poly tanks.

As water storage & water security becomes ever-increasingly important, investing in a single larger tank is far more cost effective, than having multiple poly tanks strung together, especially when multiple pad preparation and plumbing requirements are factored in. Do the sums and look at total cost per liter.



Galvanized Z275
after 240 hrs



ZINCALUME® AZ150
after 240 hrs



ZINCALUME® AZ150
after 2000 hrs

ZINCALUME® VS GALVANISED

Galvanised steel is coated with 99.8% zinc, which provides a single, sacrificial coating while ZINCALUME® gets its advanced protection from Activate™ coating comprising of a zinc/aluminium/magnesium alloy (55% Al, Zn). The Activate™ coating gives the steel both a sacrificial and barrier protection thereby prolonging the lifespan of the product.

ZINCALUME® steel outperforms galvanised steel in terms of corrosion resistance.

When comparing ZINCALUME® steel to an equivalent thickness of galvanised steel, it provides a service life increase ranging from 200% to well over 400%.



PROTECT YOUR HOME

OUR TANKS CAN BE A FIRE RESERVE

Many areas in Australia are considered to be fire-prone regions. Any Pioneer Water Tank can be equipped with a fire protection valve and connection that creates a water reserve supply to assist local fire authorities to have access to the water in your tank if your home is threatened by a bushfire.

Before you order a tank, we recommend you select the correct fire valve and connection that is required as per your local authority. It is also important to check what the fire reserve amount is required in the tank.

It's also important to ensure that the size of the tank can cater for both the fire reserve plus the rural use.

Your local authority or Rural Fire Service will have details of what size and type of connection is required and what reserve amount is needed for your particular location.

In most cases the Fire Reserve Outlet, Valve and end Connection are required to be non-combustible (Brass or Metal).

Pioneer offers a variety of fire connections to suit all types and sizes in Australia that include: CFA, STORZ & CAMLOCK.

Typical Fire Reserve nozzle placement:

Fire Reserve at the base of the tank with rural water outlet raised to the reserve amount level.



PAD PREPARATION

Before a Pioneer water tank can be installed, a stable tank pad foundation must be prepared. There are several important steps to consider when preparing the pad:

1. The sand pad must be level, stable and free of debris prior to construction. Inert sand is advised.
2. For an effective water tank installation, the sand pad must be at least two metres larger than the diameter of your tank.
3. For sloping tank sites, ensure adequate drainage to divert run off away from the tank wall.
4. Aggregate must be placed around the circumference of your tank to stop erosion, inhibit burrowing animals and comply with warranty conditions.*
5. A retaining wall may be required to maintain pad integrity.
6. Your tank should not ever be left empty. As per PT11-04 M07 D01 Rural tank Certificate - a minimum of 300mm of water should be stored in your water tank at all times**.

*Check with your local distributor to see if they can provide this additional service. If not, you will need to make sure this is appropriately applied after water tank installation yourself.

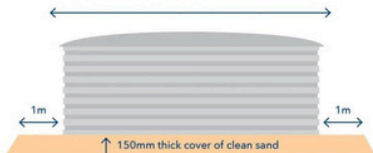
**1,000 litres of stored water weighs 1,000kgs (1 tonne).

Although a properly prepared sand pad will minimise the risk of contaminants or debris compromising your water supply, Pioneer Water Tanks also recommends installing a geotextile membrane for added protection.

Before you start preparing your site for installation of your water tank, Pioneer Water Tanks also recommends you contact your local shire to see if there are any regulations or restrictions in place.

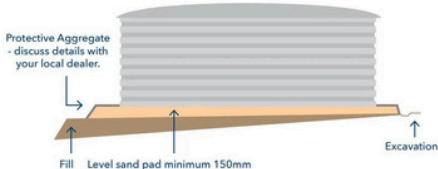
TANK SITE MUST BE LEVEL AND FLAT

It is recommended the pad size is 2m wider than the tank diameter. Smaller pads can be discussed with your local dealer, along with any compaction requirements.



NOTE: Base must be free from sticks, stones and debris.

SLOPING SITES



THE PIONEER EXPERIENCE



In the challenging landscape of the Northern Territory, Bradley Buckley has become the steadfast face of PWT through his venture, Alpha Tanks. Three years into business, Bradley's dedication is unwavering, serving the pastoral, domestic, and rural markets. Covering vast and remote territories in the top End, Bradley handles everything from sales to tank installations, providing a consistent and high quality customer experience. Bradley knows that Pioneer's quality and enduring products are the key to continued success.

BRADLEY BUCKLEY

Alpha Tanks, Northern Territory



Rick Hand from Town & Country Water Tanks in NSW, attributes his remarkable success to a combination of quality and service. Rick's unwavering commitment to Pioneer Water Tanks and his customers has led to astronomical growth of his business over the previous years, making him the network's top-selling dealer in Australia. What began as a small operation, grew into a thriving business servicing a large portion of customers. Town & Country Water Tanks' focus is on providing exceptional service, which has resulted in word-of-mouth referrals and a strong customer base. Rick's dedication to both staff and community involvement is a testament to his success.

RICK HAND

Town & Country Water Tanks, New South Wales



Specialised Tank Services is one of Pioneer's longest serving and most experienced dealers. Richard was called to do some minor maintenance by Ken C on a tank he'd installed in 1999. Ken still loves his tank and even has kept the original paperwork. Richard is one of Pioneer's oldest and most experienced Dealers and Specialised Tank Services is truly a family affair with both his sons, Jack and William now in the business.

RICHARD, JACK & WILLIAM HOLLOWAY

STS Tanks, Victoria



In 1988, Tim Harper embarked on his journey to establish a Pioneer Water Tank dealership in SA. Field days and word of mouth were his key tools for growth. Despite being a one-man operation in the early years, his persistence paid off. Tim's involvement within the local community is a testament to his reputation. Today, Tim is on a mission to ensure all tanks are registered and locations documented for swift access during bushfires, enhancing community safety.

TIM HARPER

Pioneer Water Tanks, South Australia

Watertorque's relationship with Pioneer Water Tanks has endured for over fifteen years. Founded in 2010 with a vision for specialised water infrastructure, Watertorque found in Pioneer the epitome of quality and reliability. Watertorque's dedication extends to offering a comprehensive range of products, ensuring tailor-made solutions of the highest standard, using Pioneer products. For Watertorque, being local means forging lasting relationships and supporting communities. Their belief in Pioneer isn't just about a product; it's a symbol of genuineness and innovation.

WES HARRIS

Watertorque, Western Australia

150MM DIAMETER OVERFLOW

THE LARGEST IN THE MARKET

Designed to meet the Plumbing Industry Board's requirements for an overflow greater than the infill rate of water means you avoid costly problems associated with a tank overflow.

The one-piece PVC wall connection prevents water coming into contact with any steel around the overflow penetration. The need to use any chemical based sealant is also eliminated to protect your potable water supply against possible contamination.

Our overflow has an internal elbow that faces upwards and branches into a funnel. This allows your tank to fill up past that overflow hole increasing how much water your tank can hold over a conventional hole, because we include the funnel it acts like a weir increasing how much water can escape in case there is a huge downpour.



ACCESSORIES

Standard Inclusions



AQUALINER Fresh®
Water Tank Liner



50mm Outlet
& Ball Valve



150mm PVC Overflow,
Bell Mouth, Elbows,
Downpipe & Flap Valve



Sealed Inlet Lid for Easy
Access to Basket



Lockable Heavy Duty
Hinged Access Hatch



Hook On
Galvanised Ladder



Stainless Steel Leaf
Filter Basket



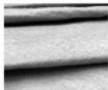
Sacrificial
Anodes

Add Ons



(Included in some locations)

Superseal Dust
& Vermin Seal



Geotextile Liner
Protection



Smart Water Savers
(Roof Catchment
System)



Rural Fire Connections
(STORZ, CFA,
CAMLOCK)



50mm Wall Inlet for
Bore Connection

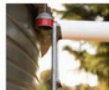


High Flow Stainless
Steel Leaf Filter Basket



Larger High Flow
Outlets Available

Level Gauges



Levetator



Liquidator



Various Satellite and
4G Electronic Options



Dipstick

ZINCALUME®



Standard Colour Range

Surfmist®	Classic Cream®
Wallaby®	Paperbark®
Basalt®	Pale Eucalypt®
Woodland Grey®	Monument®

Non-Standard Colour Range

Dover White®	Evening Haze®
Southerly®	Shale Grey®
Dune®	Bluegum®
Gully®	Windspray®
Jasper®	Cove®
Ironstone®	Deep Ocean®
Cottage Green®	Manor Red®
Night Sky®	

TANK SIZES

All GT tanks can be produced in Light Commercial Grade and all tanks come in either ZINCALUME® or COLORBOND® colours.

MODEL	DIAMETER	HEIGHT	LITRES
GT10	2.67m	2.18m	12,241
GT20	3.34m	2.18m	19,126
GT30	4.01m	2.18m	27,542
GT40	4.68m	2.18m	37,487
GT50	5.35m	2.18m	48,963
GT60	6.02m	2.18m	61,968
GT80	6.68m	2.18m	76,504
GT90	7.35m	2.18m	92,570
GT110	8.02m	2.18m	110,166
GT130	8.69m	2.18m	129,292
GT150	9.36m	2.18m	149,948
GT170	10.03m	2.18m	172,134
GT200	10.70m	2.18m	195,851
GT220	11.36m	2.18m	221,097
GT250	12.03m	2.18m	247,874
GT280	12.70m	2.18m	276,180

Calculate your rainwater harvesting potential

Roof Length (m) x Shed Width (m) x Annual Rainfall (mm)
= Annual Water Catchment (L)

For higher litreage tanks, we also offer 3 ring tanks.

MODEL	DIAMETER	HEIGHT	LITRES
GTI18	2.67m	3.24m	18,164
GTI28	3.34m	3.24m	28,382
GTI41	4.01m	3.24m	40,870
GTI56	4.68m	3.24m	55,629
GTI73	5.35m	3.24m	72,658
GTI92	6.02m	3.24m	91,958
GTI114	6.68m	3.24m	113,528
GTI137	7.35m	3.24m	137,369
GTI163	8.02m	3.24m	163,480
GTI192	8.69m	3.24m	191,862
GTI223	9.36m	3.24m	222,515
GTI255	10.03m	3.24m	255,438
GTI291	10.70m	3.24m	290,632
GTI328	11.36m	3.24m	328,096
GTI368	12.03m	3.24m	367,831
GTI410	12.70m	3.24m	409,836
GTI454	13.37m	3.24m	454,112
GTI501	14.04m	3.24m	500,659

The information contained in this catalogue is provided for informational purposes only and to the fullest extent permitted by law, without any representation or warranty of accuracy or completeness of information or other warranty of any kind including any implied warranty of quality, merchantability, fitness for a particular purpose or non-infringement.

Additionally, Pioneer Water Tanks Pty Ltd ("Pioneer") ABN 65 604 579 651 makes no representation whatsoever, either expressed or implied, in respect of information of third parties that appear in this catalogue.

Pioneer Water Tanks®, AQUALINER Fresh®, B-80 V Lock® and PIONEER DEALER DIRECT® are registered trade marks of Pioneer Water Tanks Pty Ltd. Sanitized® is a registered trademark of SANITIZED AG. COLORBOND® and ZINCALUME® are registered trademarks of BlueScope Steel Limited.

Pioneer is not a designer of water management systems or a consultant in relation to their use. Recipients of this catalogue should make their own enquiries about the contents of this catalogue and independently verify the applicability, fitness for a particular purpose or suitability or liability with regard to the reliance on or use of any of the information in this catalogue or any Pioneer product.

Pioneer will not be responsible for the consequences of reliance on any technical advice given by Pioneer employees, appointed dealers or sub contractors in relation to any matter other than those matters specific to the design, manufacture and installation (where applicable) of the Pioneer range of products.

Pioneer will be entitled at any time and without notice to change, update, modify, replace, discontinue, improve and delete any information or product in this catalogue.

The COLORBOND® steel images shown have been reproduced to represent actual product colours as accurately as possible. However, we recommend checking your chosen colour against an actual sample of the product before purchasing, as varying light conditions and limitations of the printing process may affect colour tones.

Your Local Dealer is:

Leading the way in water

23 Clayton Street, Bellevue, WA 6056
PO Box 1874 Midland, WA 6936

Toll Free 1800 999 599
Facsimile (08) 9274 4588

Email enquiries@pioneerwatertanks.com.au
pioneerwatertanks.com.au

