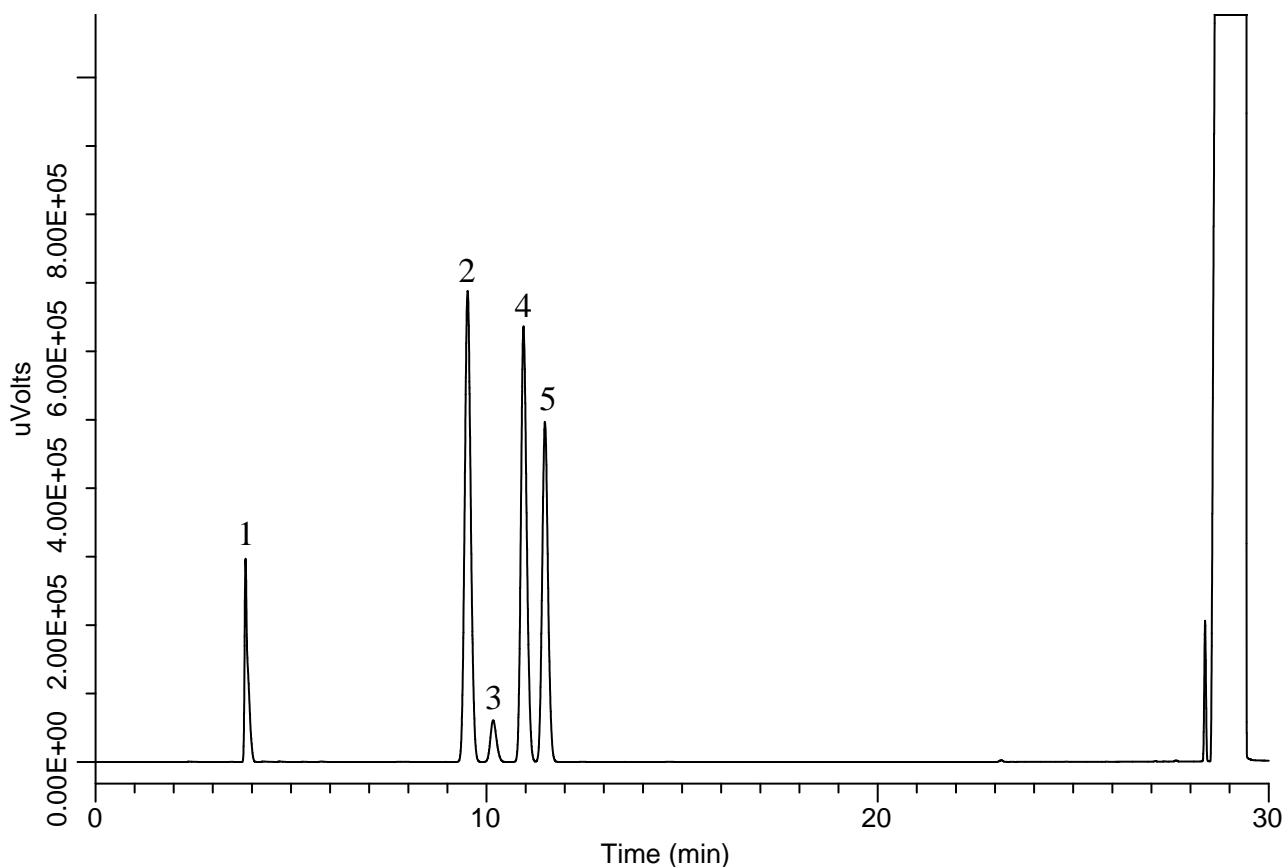


InertSearch™ for GC

InertCap® Applications

Residual solvents in pharmaceuticals (Class 1)

Data No. GA 286-0904



Conditions

System : GC4000 Plus-FID
Column : InertCap 624MS
0.32 mm I.D. × 30 m df = 1.80 µm
Col. Cat. No. : 1010-64747
Col. Temp. : 40 °C(20 min) - 10 °C/min
- 240 °C(20 min)
Carrier Gas : He 2.20 mL/min
Injection : Split 20:1
140 °C
Detection : FID Auto Range
250 °C
Sample Size : 1.0 µL
Analyte in Dimethyl sulfoxide

Analyte

1. 1,1-Dichloroethene	(40 mg/mL)
2. 1,1,1-Trichloroethane	(50 mg/mL)
3. Carbon tetrachloride	(20 mg/mL)
4. Benzene	(10 mg/mL)
5. 1,2-Dichloroethane	(25 mg/mL)