

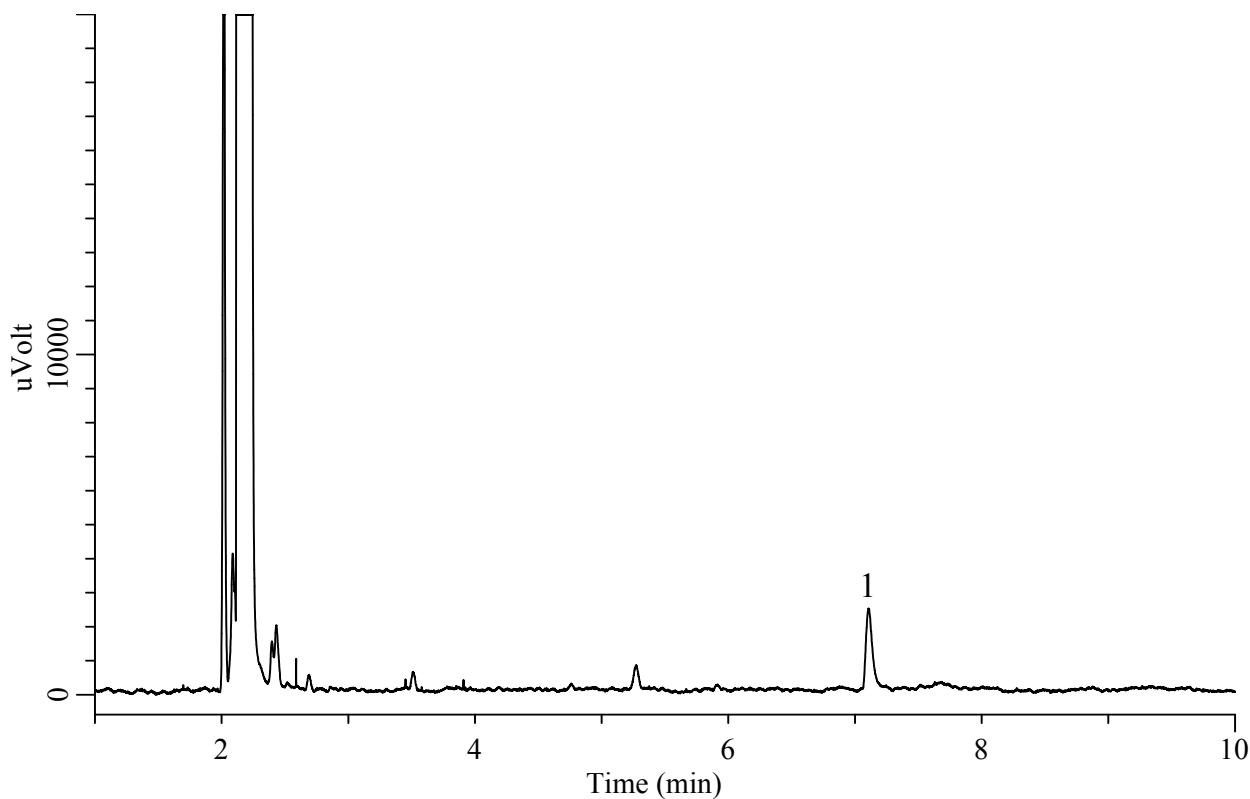
# InertSearch™ for GC

InertCap® Applications

## Analysis of Iohexol

(Under the Condition of the Japanese Pharmacopoeia 16)

Data No. GA247-0904



### Conditions

**System** : GC-FID  
**Column** : InertCap 5  
0.25 mm I.D. x 30 m df = 0.25 μm  
**Col. Cat. No.** : 1010-18142  
**Col. Temp.** : 70 °C  
**Carrier Gas** : He 80 kPa  
**Injection** : Split 1:40  
230 °C  
**Detection** : FID Range 10<sup>0</sup>  
230 °C  
**Sample Size** : Analyte in Diethyl ether  
5 μL  
**Sample** : Standard

### Analyte

1. 3-Chloro-1,2-propanediol 20 mg/L

RSD of the  
peak area (n=6) : 4.3 (≦ 15)